

Data Support at the NCDIT Enterprise Data Office

Sam Thompson, Executive Director, Health Information Exchange Authority
Trip Stallings, Executive Director, NC Longitudinal Data System

March 2026

What is the Enterprise Data Office at NCDIT?

I. What does EDO do?

EDO Data Landscape

- NC Center for Geographic Information and Analysis (**CGIA**): State geographic and geospatial data

[NC OneMap](#) [*public*]

- NC Health Information Exchange Authority (**NC HIEA**): Clinical, encounter, and claims data

[NC HealthConnex](#) [*HIPAA-protected*]

- NC Longitudinal Data System (**NCLDS**): Data linked across time and data sources

[Longitudinal Data Request Service](#)
[*FERPA-, HIPAA-, & 20 CFR 603-protected*]

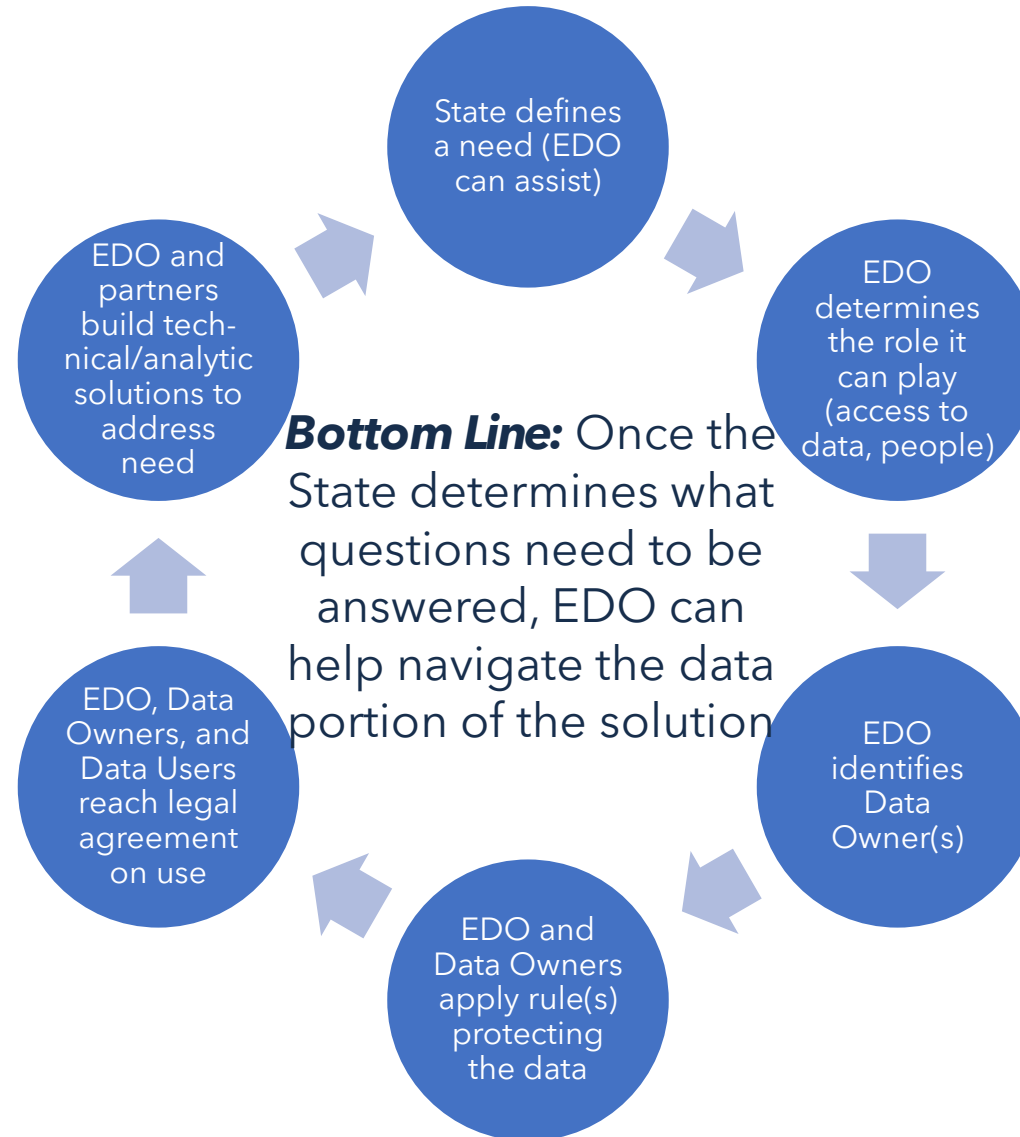
- Government Data Analytics Center (**GDAC**): State agency data integration, analytics, and case management

Includes [Criminal Justice Law Enforcement Automated Data Services](#) (**CJLEADS**) [*CJIS-protected*]

What Drives Us

- Enabling a data-driven government by empowering leaders to make informed decisions that improve outcomes for North Carolina

II. How Can EDO Support State Data Needs?

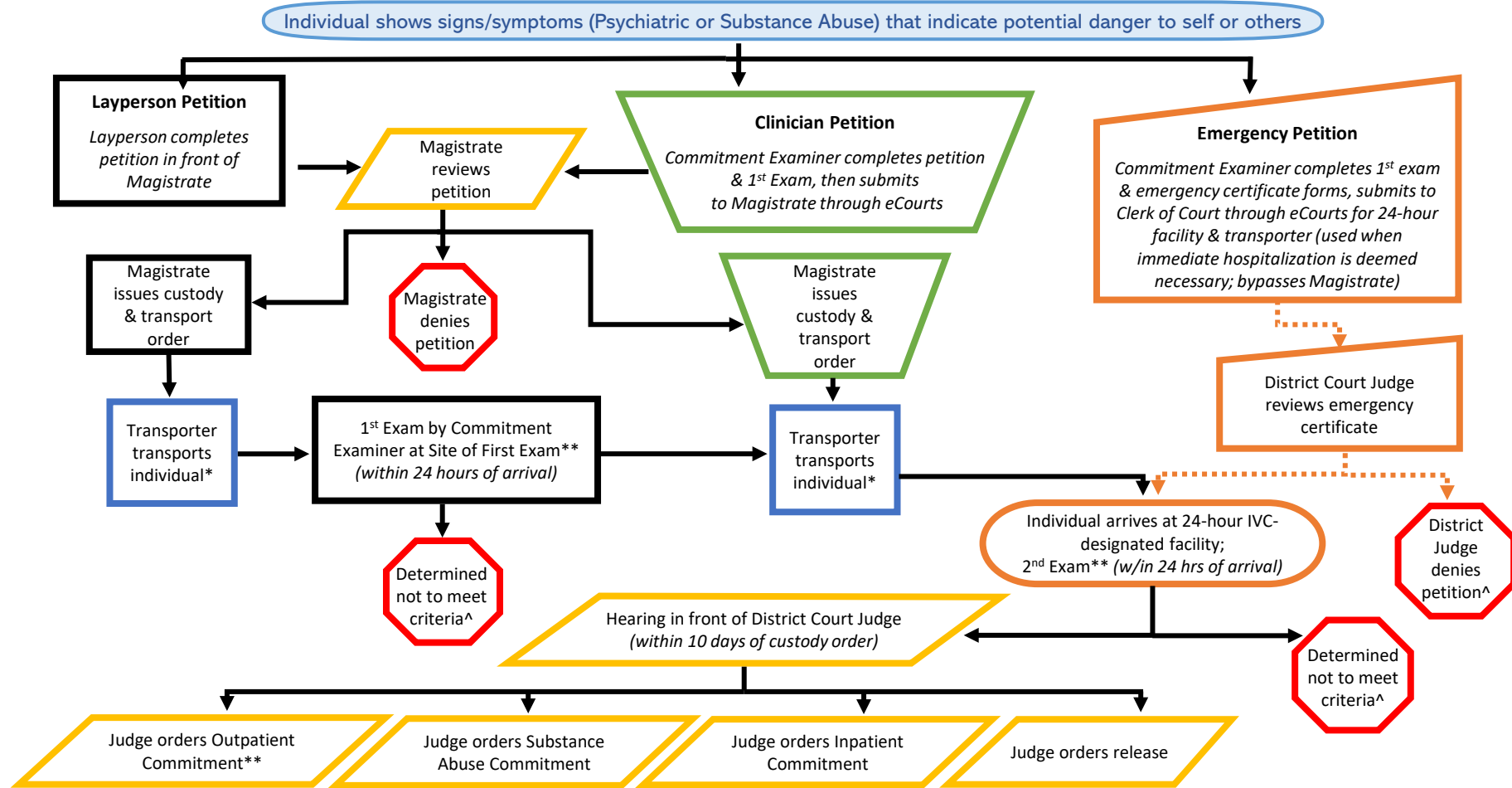


EDO in the Context of Involuntary Commitments

Guiding Question:

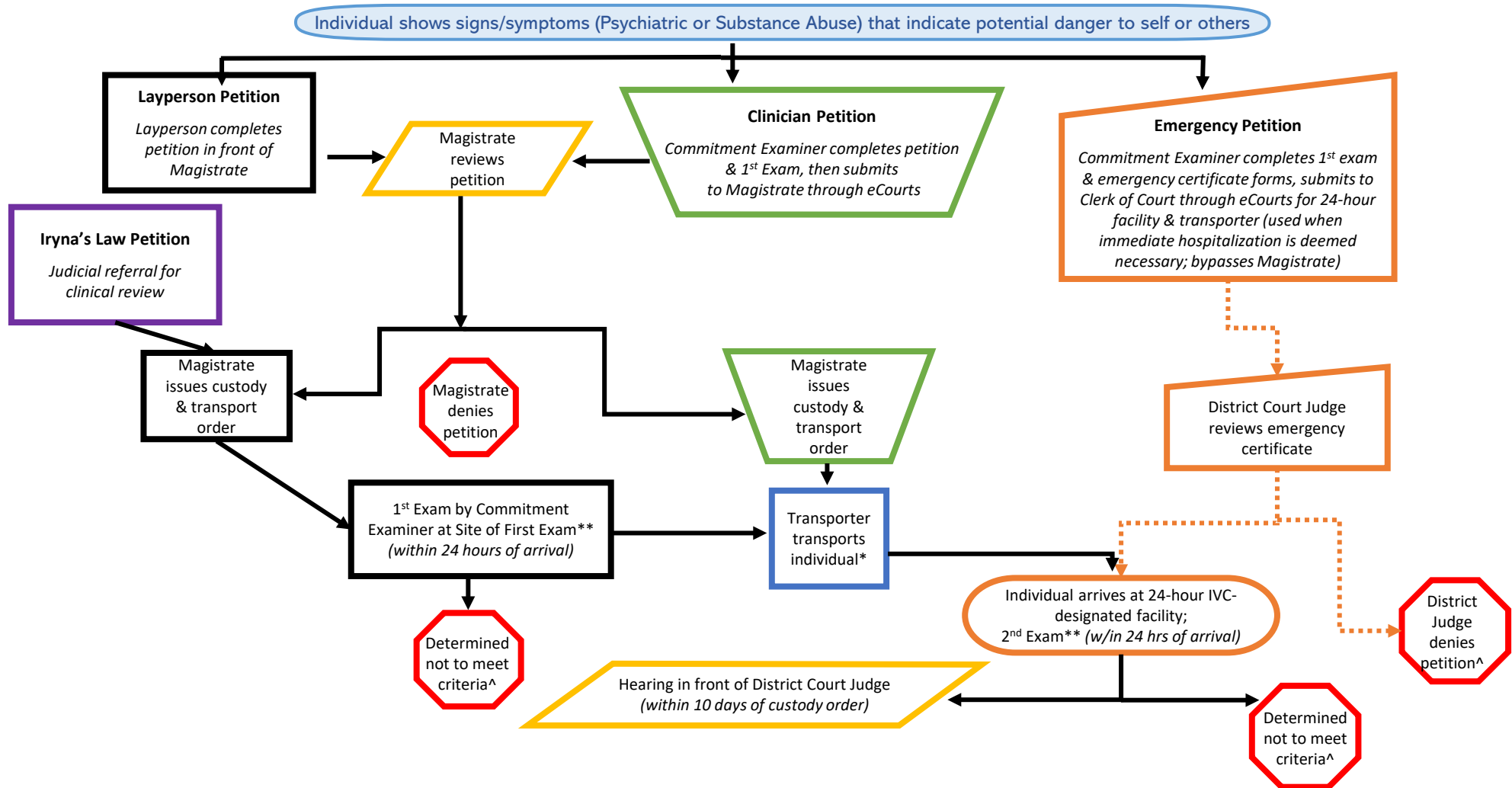
*How could data supplement the IVC
process?*

NC Involuntary Commitment Process (IVC): Inpatient Treatment^^



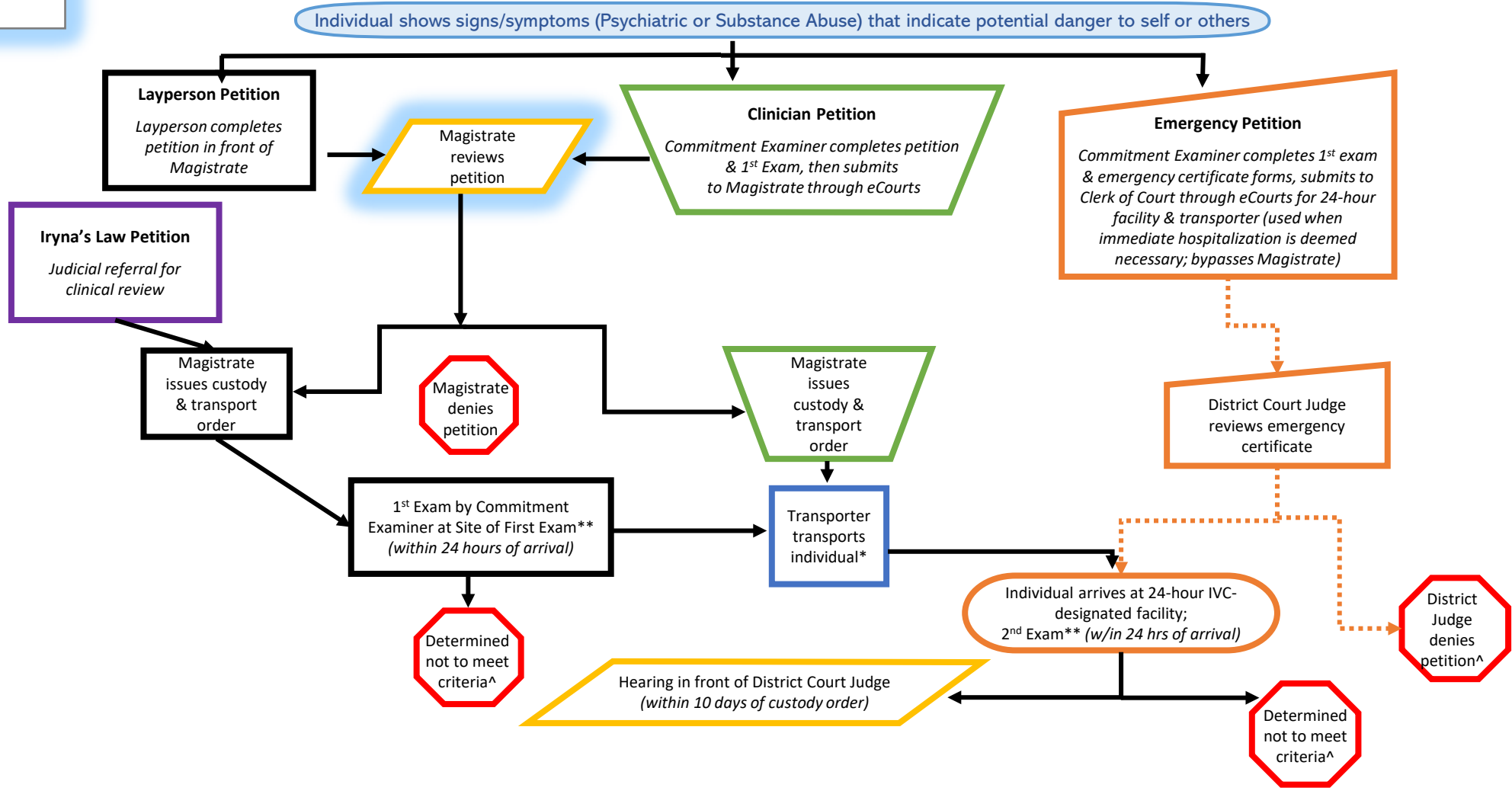
Based on Information from Criteria for Involuntary Commitment in NC (Mark Botts, 2009, UNC School of Government), Commitment Issues for Law Enforcement (NCSA, 2020), and SB630 IVC Revisions (2018). *Transporter must take the individual into custody within 24 hours or new order needed. **If individual is found in need of Involuntary Outpatient Psychiatric or Substance Use Treatment, the provider will be identified, and the individual will be released from custody and returned to residence after Exam. ^If determined not to meet IVC criteria, individual is released and proceedings are terminated. ^^Individual can, at any time, elect to have voluntary treatment. If voluntary, law enforcement will not transport.

NC Involuntary Commitment Process (IVC): Inpatient Treatment^^



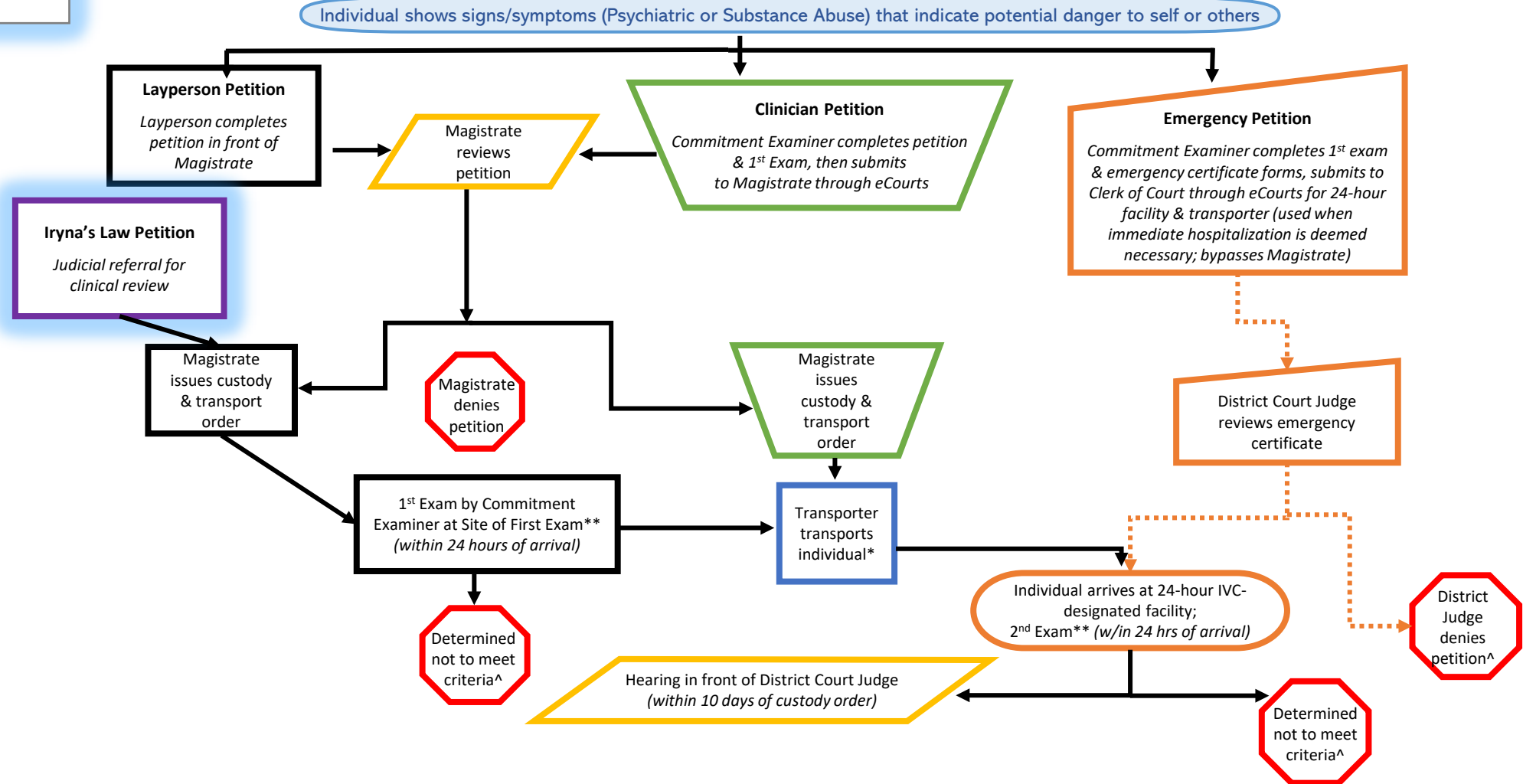
Blue glow indicates activities that could be informed by data

NC Involuntary Commitment Process (IVC): Inpatient Treatment^^



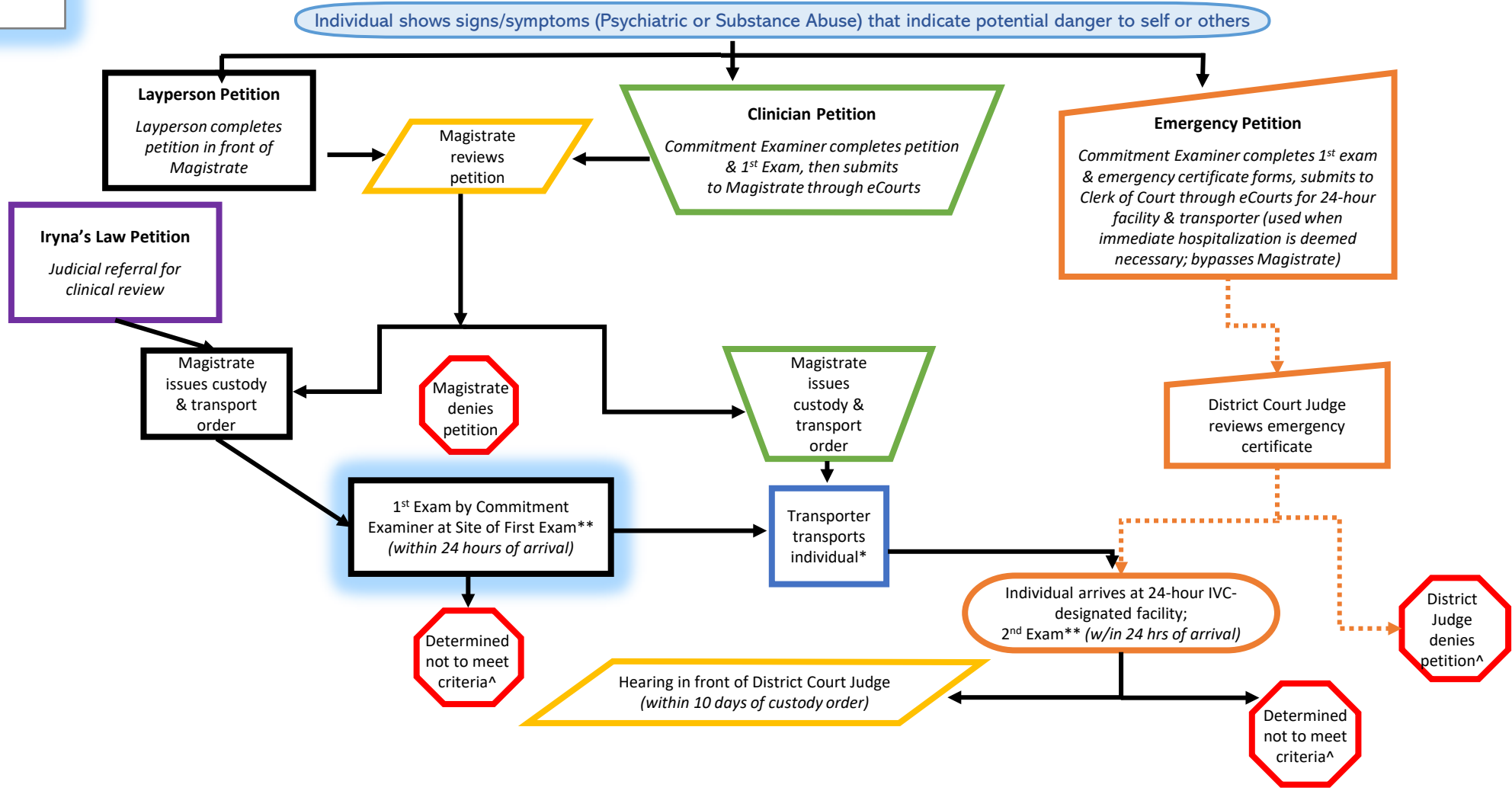
NC Involuntary Commitment Process (IVC): Inpatient Treatment^^

Blue glow indicates activities that could be informed by data



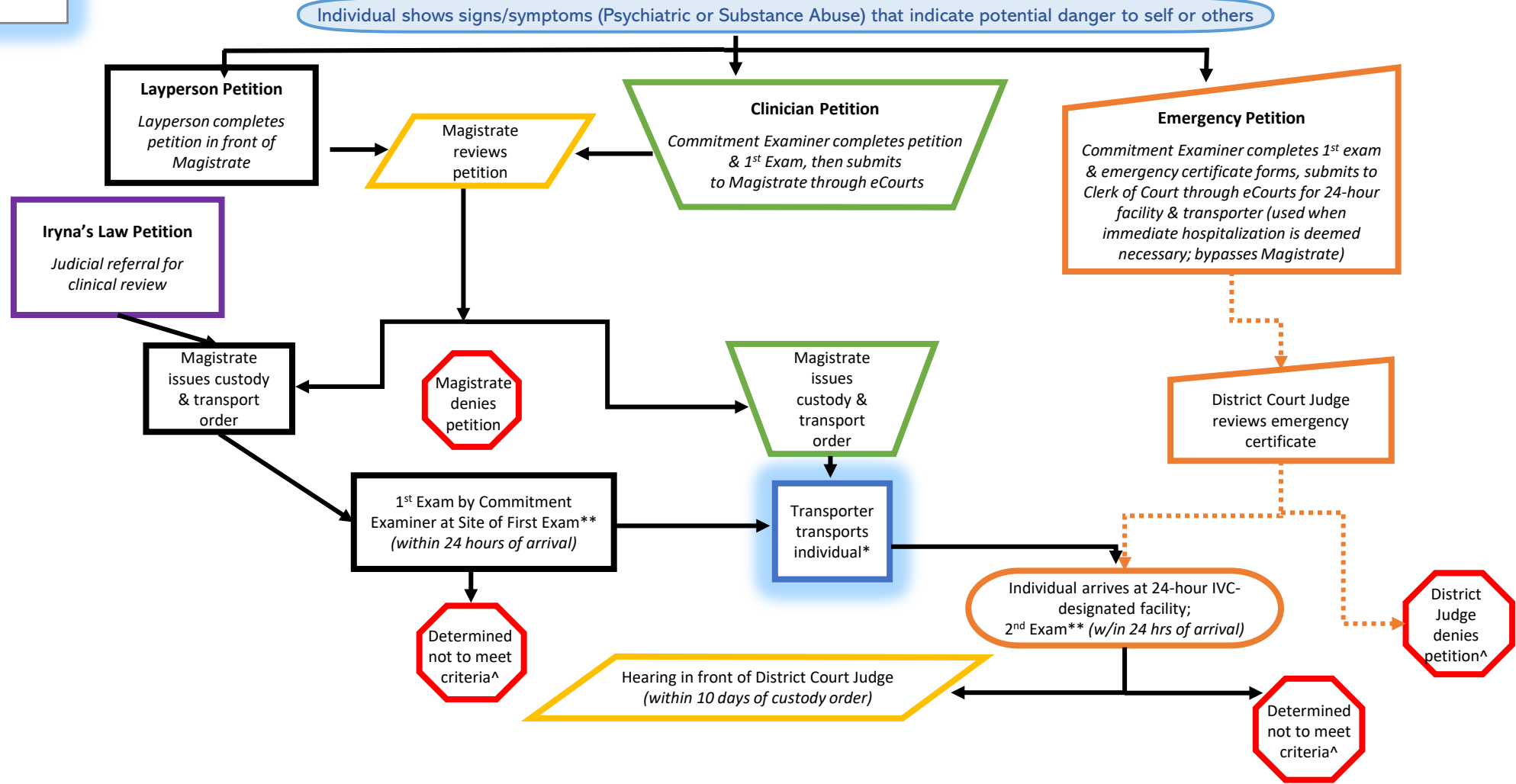
Blue glow indicates activities that could be informed by data

NC Involuntary Commitment Process (IVC): Inpatient Treatment^^



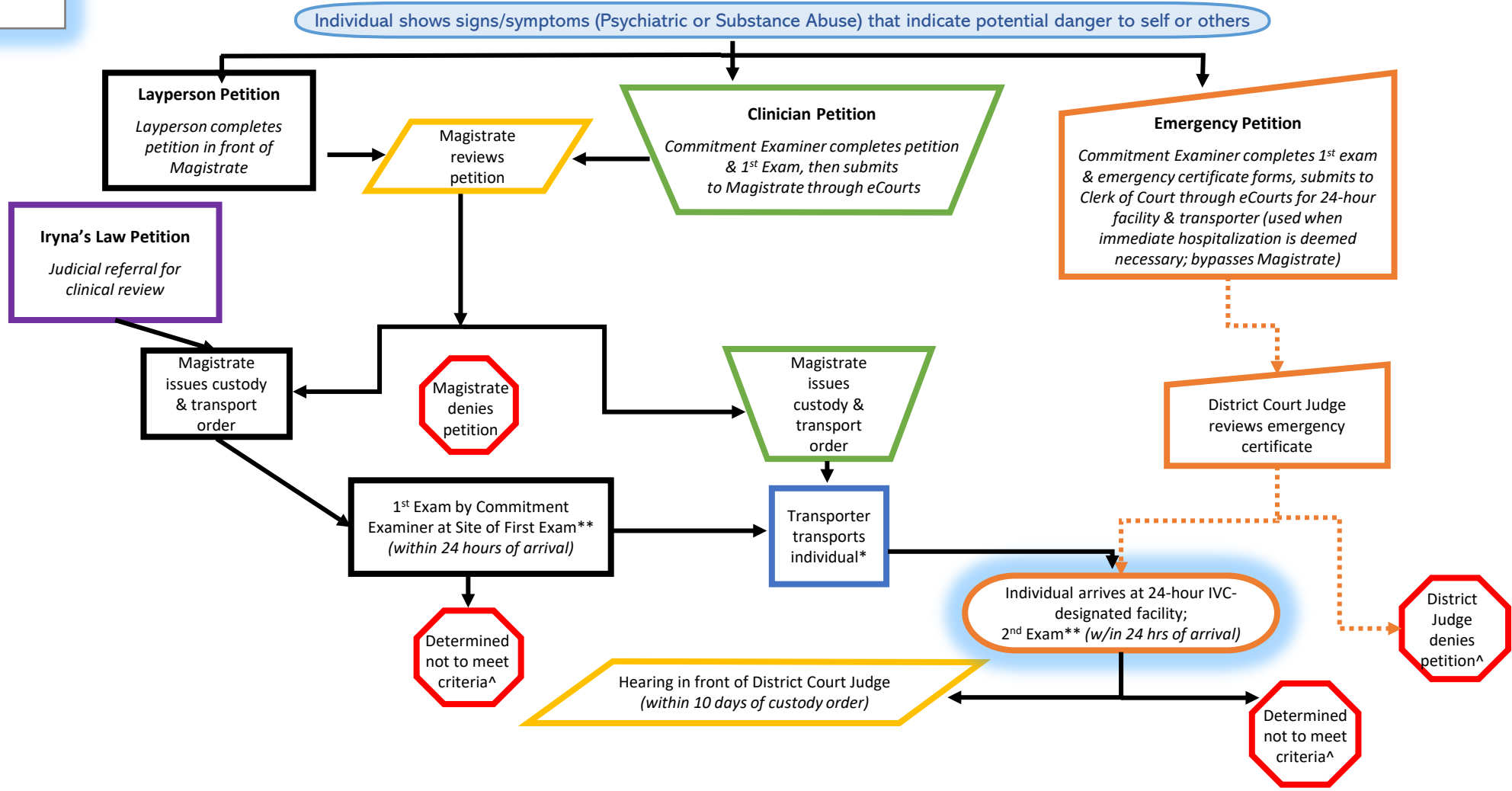
Blue glow indicates activities that could be informed by data

NC Involuntary Commitment Process (IVC): Inpatient Treatment^^



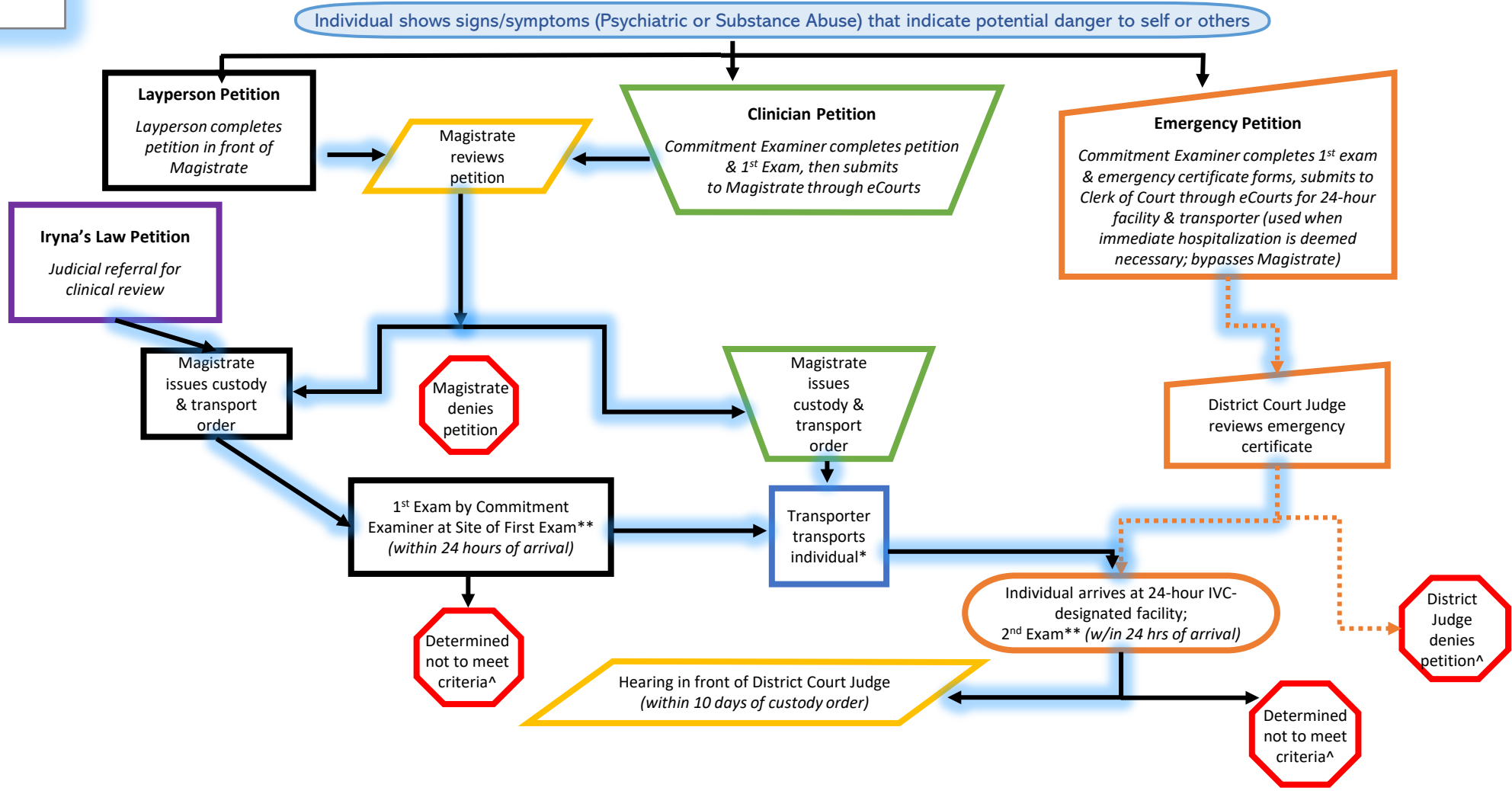
Blue glow indicates activities that could be informed by data

NC Involuntary Commitment Process (IVC): Inpatient Treatment^^



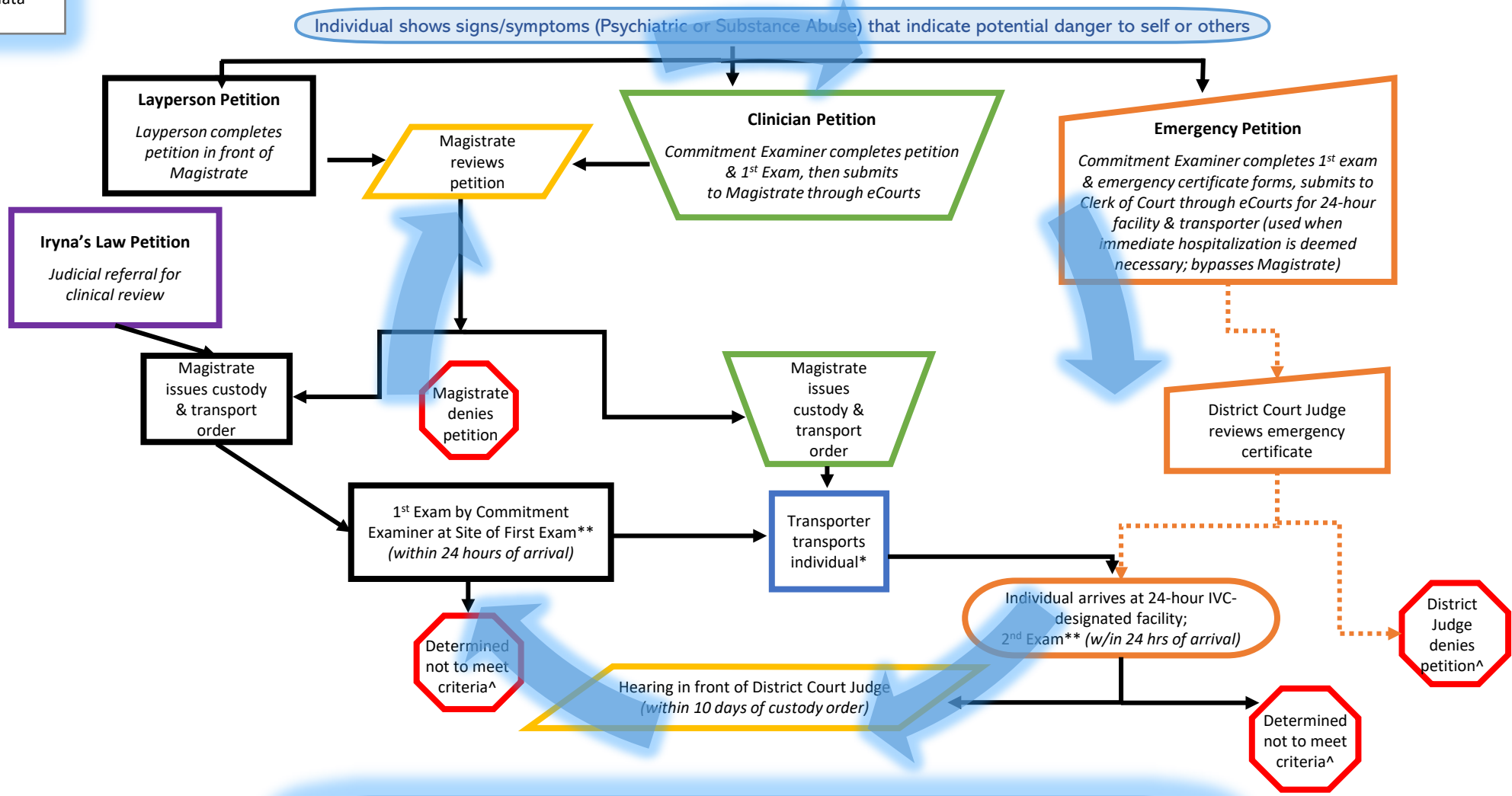
Blue glow indicates activities that could be informed by data

NC Involuntary Commitment Process (IVC): Inpatient Treatment^^



Blue glow indicates activities that could be informed by data

NC Involuntary Commitment Process (IVC): Inpatient Treatment^^



How often is IVC happening? What factors predict it? How can we improve IVC process and outcomes?

III. How might EDO systems support the IVC process?

- NC Health Information Exchange Authority (**NC HIEA**): Clinical, encounter, and claims data in [NC HealthConnex](#)
 - **Provide close to real-time clinical data to inform IVC decisions**
 - **Provide historical healthcare data to monitor and evaluate IVC**
 - **Route petition and examination data throughout process**
- Government Data Analytics Center (**GDAC**): [Criminal Justice Law Enforcement Automated Data Services \(CJLEADS\)](#)
 - **Provide close to real-time criminal justice data to inform IVC decisions**
 - **Provide historical data to monitor and evaluate IVC**
- NC Longitudinal Data System (**NCLDS**): Data linked across time and data sources via the [Longitudinal Data Request Service](#)
 - **Join cross-sector data to support analysis of and improvements to the IVC process**

IV. What could inhibit using data to inform the IVC process?

- NC Health Information Exchange Authority (**NC HIEA**): Clinical, encounter, and claims data in [NC HealthConnex](#)
 - **HIPAA-protected** - can only be accessed by covered entities and their business associates
- Government Data Analytics Center (**GDAC**): [Criminal Justice Law Enforcement Automated Data Services \(CJLEADS\)](#)
 - **Statutory limitations - CJIS-protected** - can only be accessed by authorized law enforcement covered entities
- NC Longitudinal Data System (**NCLDS**): Data linked across time and data sources via the [Longitudinal Data Request Service](#)
 - **Statutory limitations** - NCLDS currently authorized to access only education & workforce data

Questions?