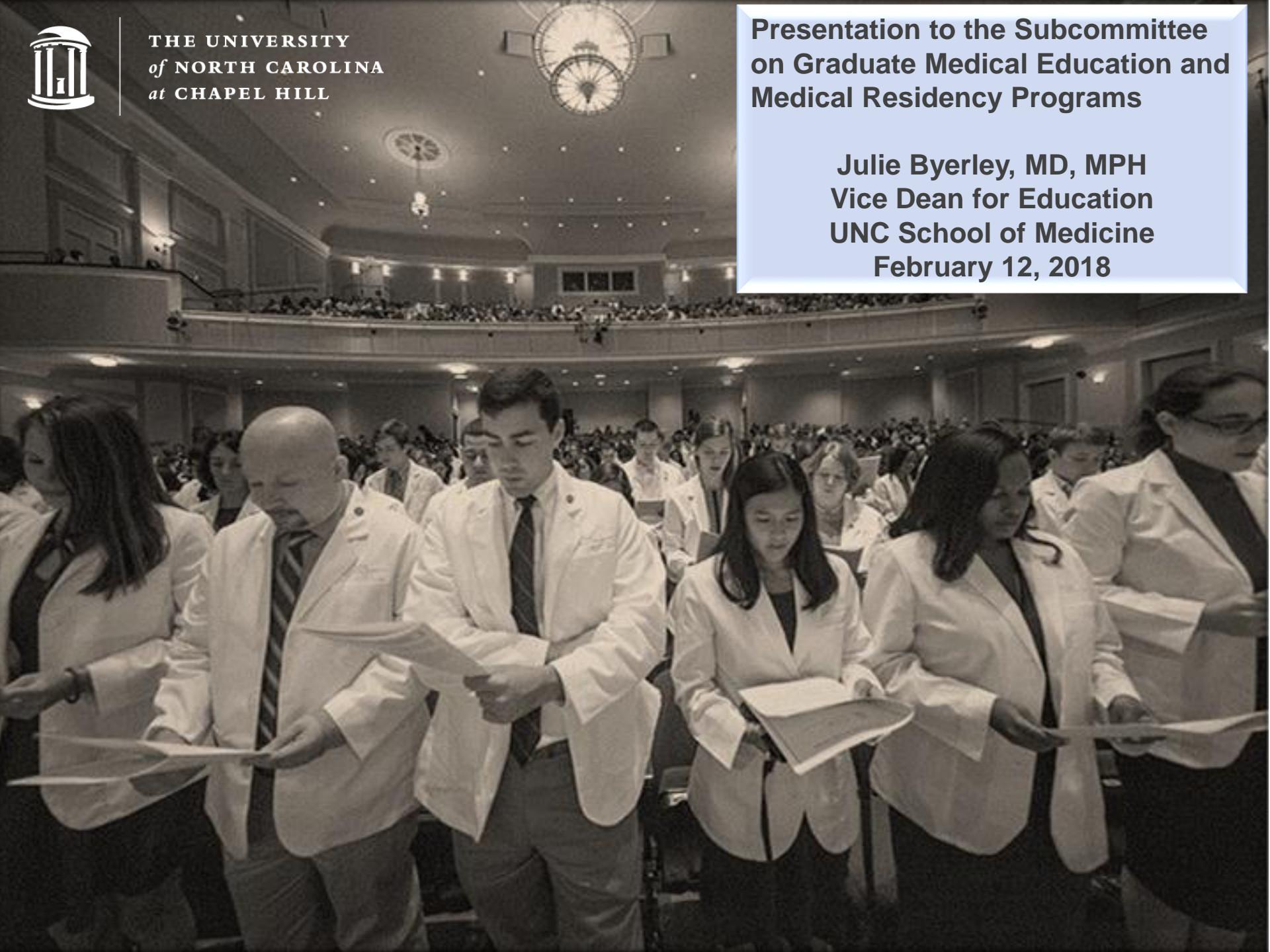




THE UNIVERSITY
of NORTH CAROLINA
at CHAPEL HILL

**Presentation to the Subcommittee
on Graduate Medical Education and
Medical Residency Programs**

**Julie Byerley, MD, MPH
Vice Dean for Education
UNC School of Medicine
February 12, 2018**



After college, future doctors go to 4 years of medical school

- Average debt at graduation (for those with debt)
 - \$112k at UNC
 - \$191k nationally

After graduating from medical school, doctors “match” into a residency (GME slot) where they train for at least 3 more years

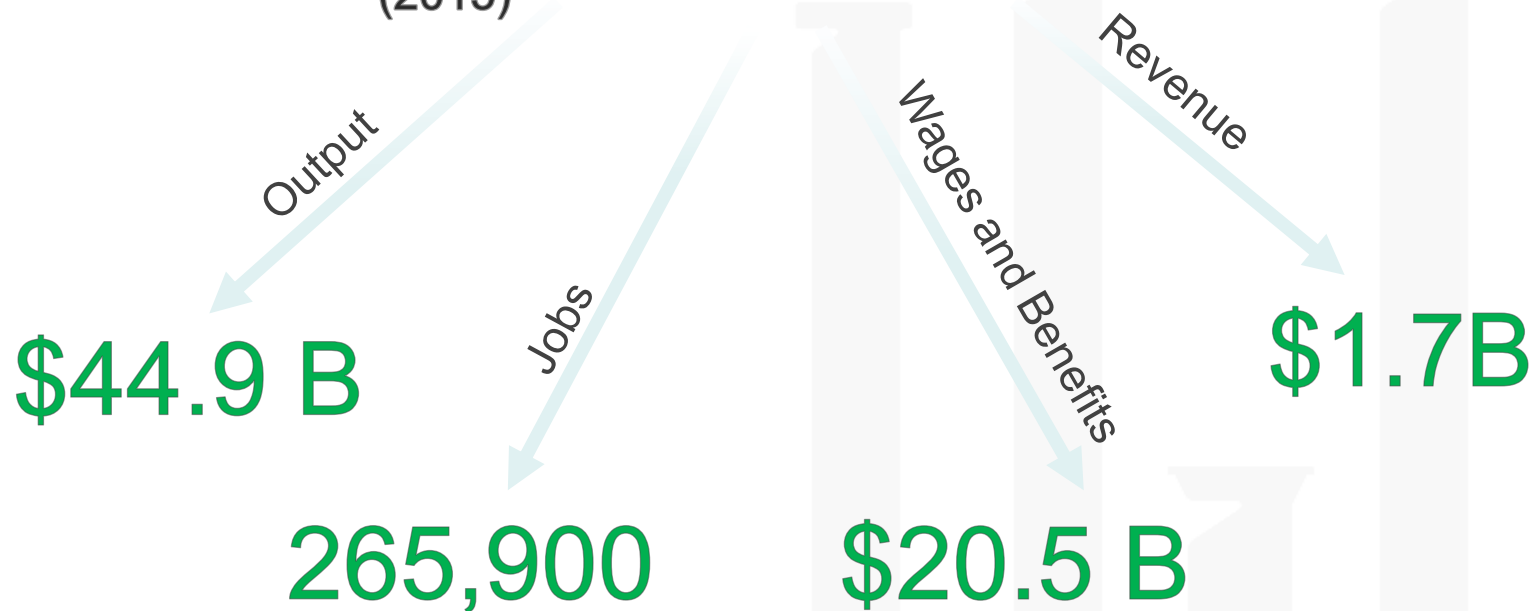
- UNC First Year Resident Salary \$51,814
- Traditionally paid by the federal government, but UNC Health Care System and most of the NC academic centers are at or above the federal cap for funded slots



2018 Report on the National Economic Impact of Physicians

20,876 NC Physicians

(2015)



Vision: To be the Nation's Leading Public School of Medicine and Academic Health Care System

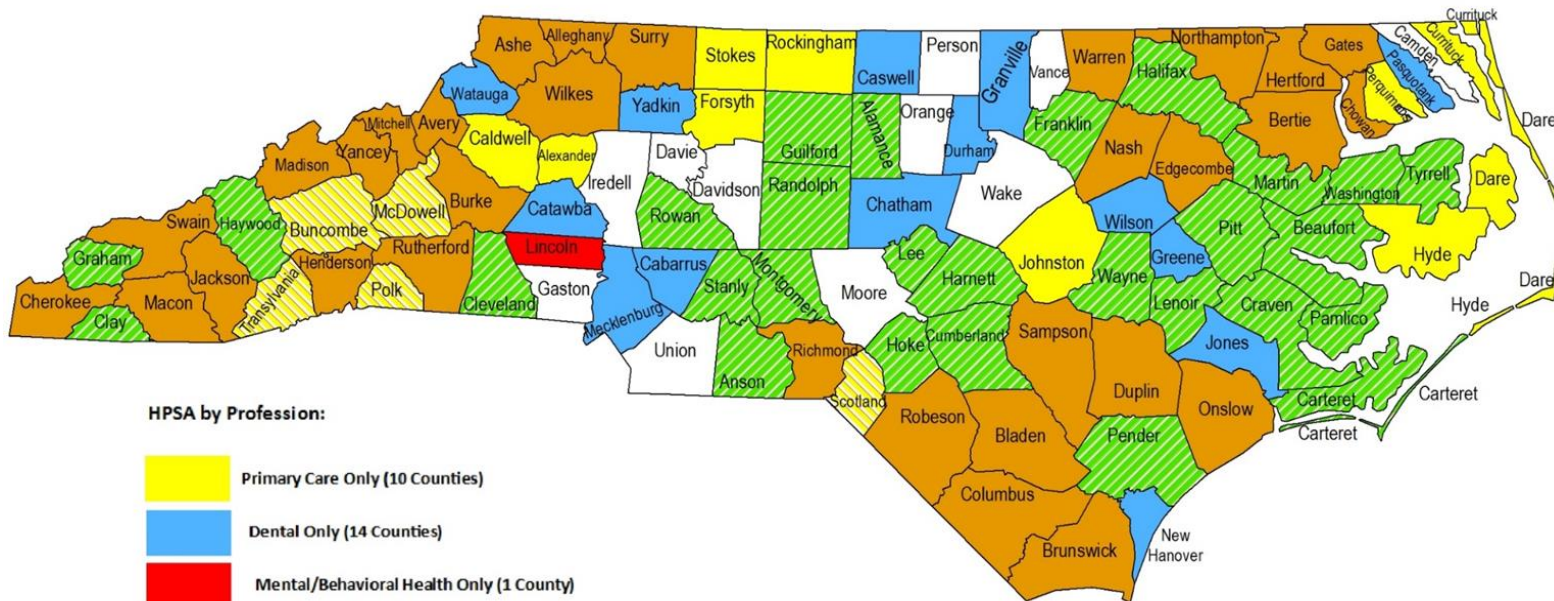


- Train the next generation of physicians
- Conduct research and develop innovative tools, techniques and approaches to find new cures, and better treatments
- Serve the needs of our patients/citizens
 - » Greater access to services
 - » Highest quality of patient care
 - » Regardless of the patient's ability to pay



North Carolina needs more doctors in rural areas

Rural North Carolina Counties Designated Health Professional Shortage Areas



HPSA by Profession:

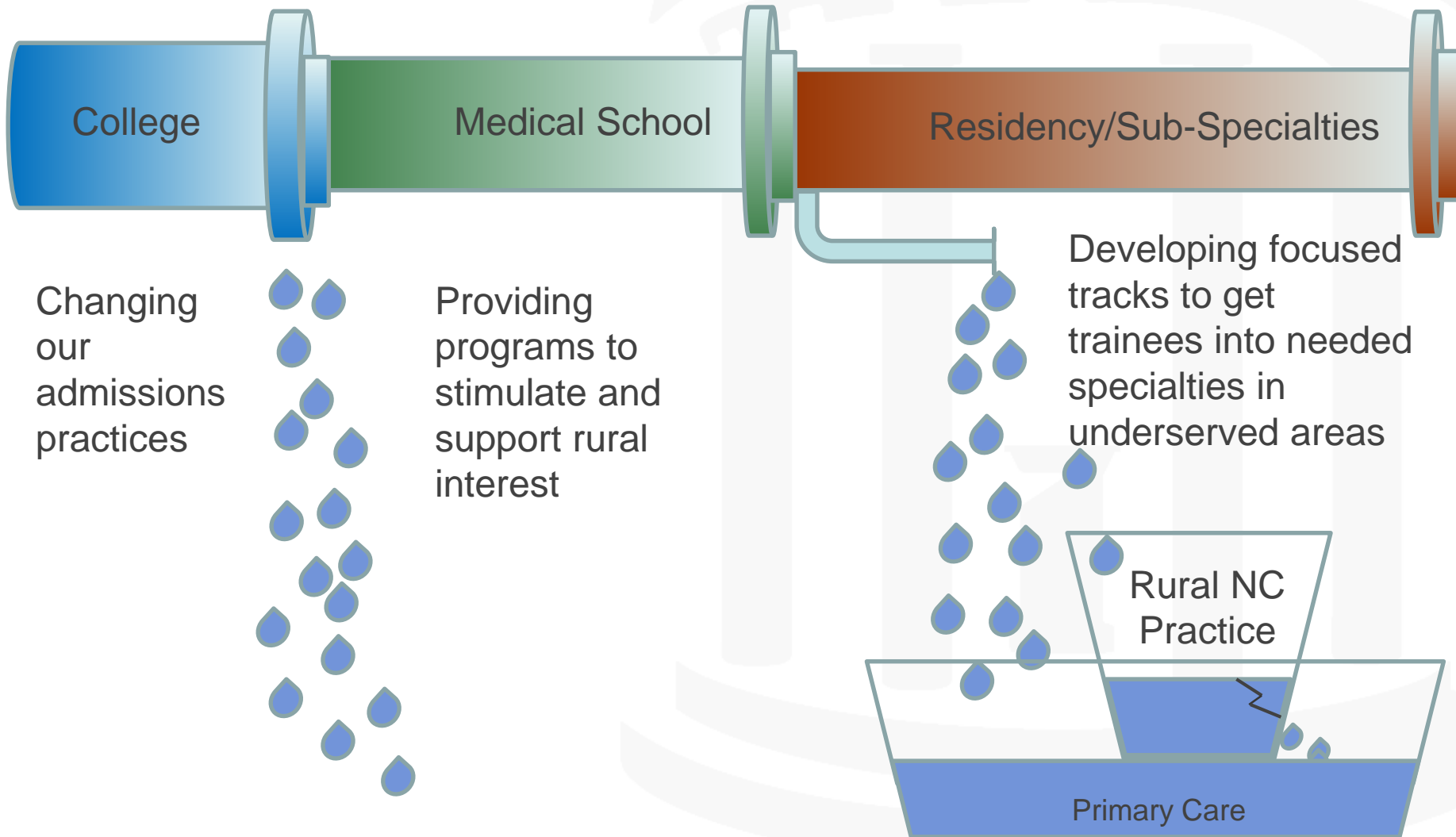
- Primary Care Only (10 Counties)
- Dental Only (14 Counties)
- Mental/Behavioral Health Only (1 County)
- Primary Care and Dental (28 Counties)
- Primary Care and Mental/Behavioral Health (5 Counties)
- Primary Care, Dental, Mental/Behavioral Health (31 Counties)

*Shortage area may be whole county, or population group or geographical area within a county. Data as of January 5, 2016.
 *Counties that are white are urban counties or rural counties without an official HPSA designation.





Losing great candidates for rural/underserved primary care



Thank you for the bond package!

With our new building we will be able to increase our medical school class size from 190 to 230

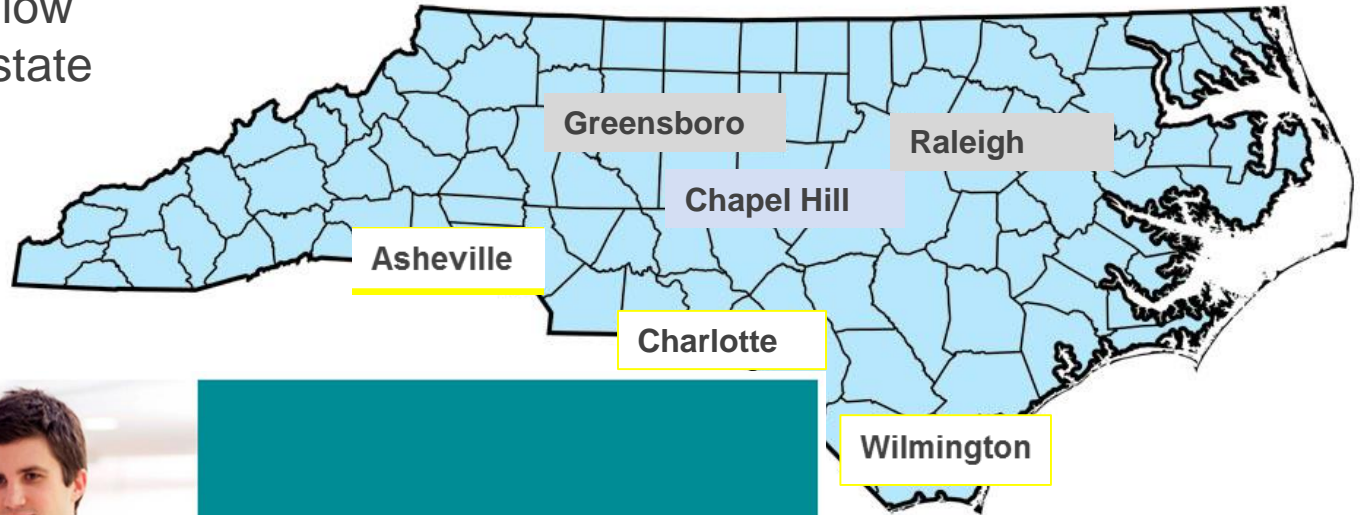


UNC SOM Asheville Campus



UNC School of Medicine

Multiple campuses allow broad service to the state



UNC SOM
Wilmington
Campus



UNC SOM Office of Rural Initiatives



Kenan Primary Care Medical Scholars



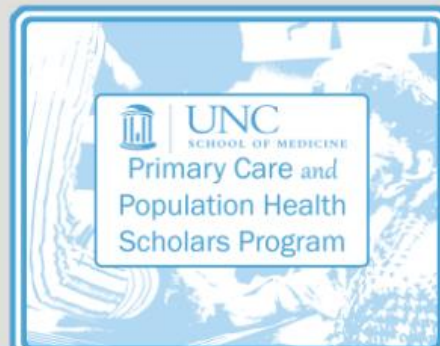
FIRST Program



NC Rural Promise Scholarship



Rural Inter-Professional Health Initiative

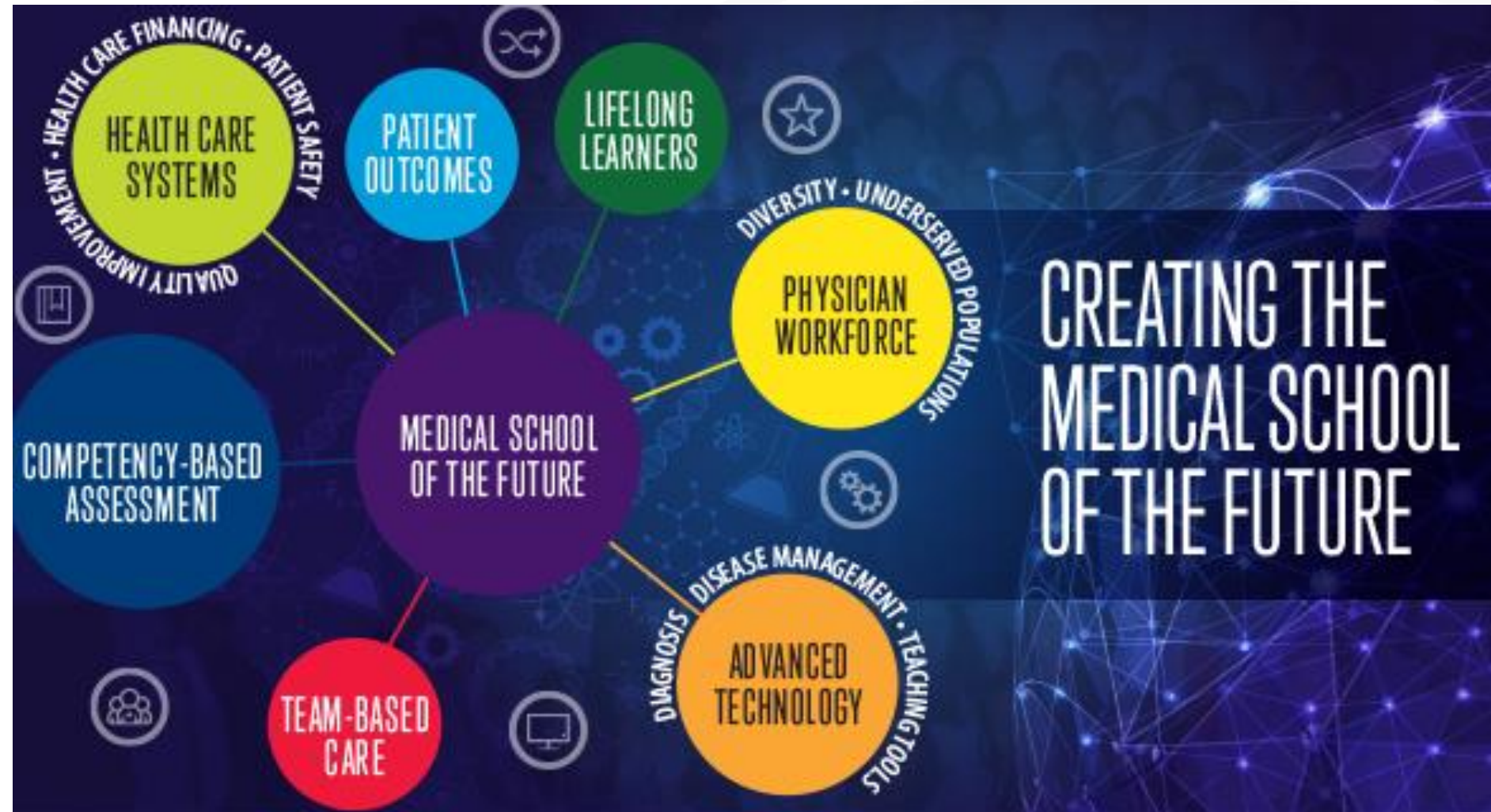


Primary Care & Population Health Scholars



Community Engagement Projects

AMA Accelerating Change in Medical Education



UConn | SCHOOL OF MEDICINE

EVMS

A.T. STILL UNIVERSITY | ATSU
SCHOOL OF OSTEOPATHIC MEDICINE IN ARIZONA



School of Medicine



RUTGERS

Robert Wood Johnson
Medical School



EMORY
UNIVERSITY
SCHOOL OF
MEDICINE



School of
MEDICINE



UW Medicine

UW SCHOOL
OF MEDICINE



UCDAVIS
SCHOOL OF MEDICINE



The City College
of New York

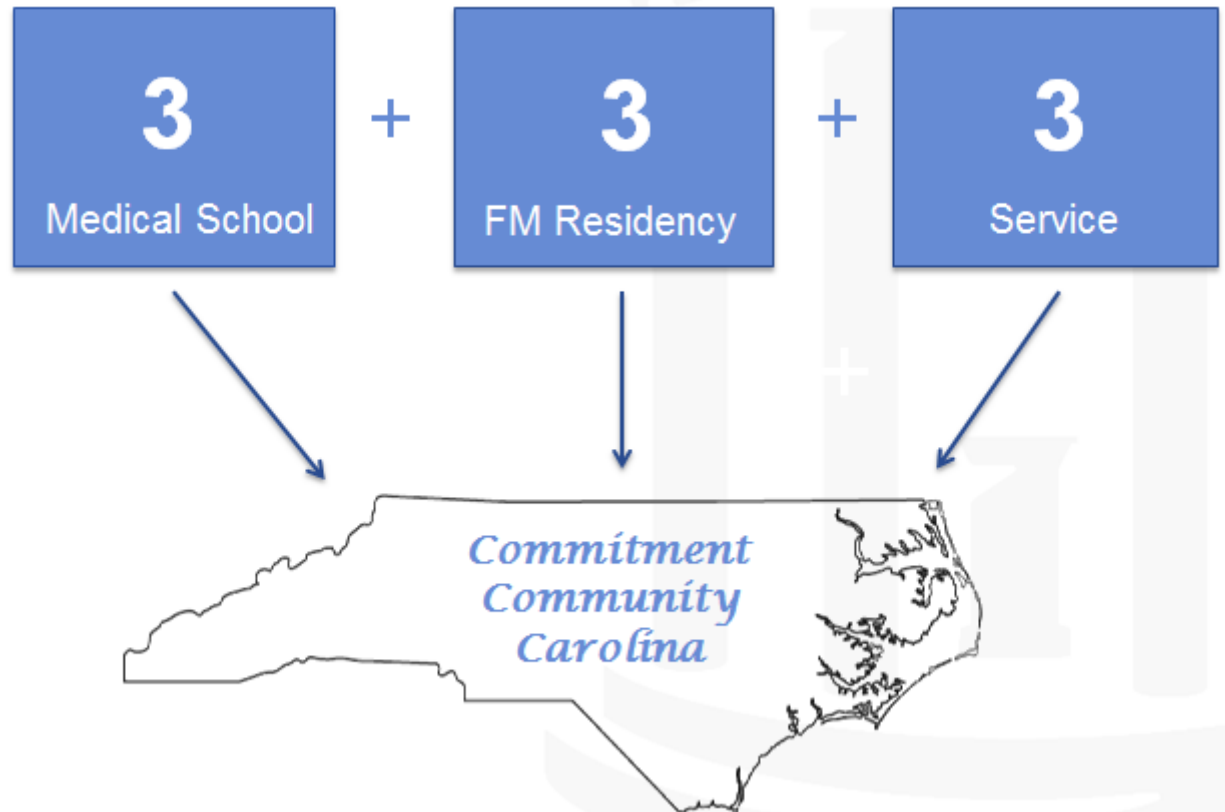


One of our ACE Consortium Projects

(Also funded by the Duke Endowment and UNC SOM)

FIRST: Fully Integrated Readiness for Service Training

A new comprehensive program to fast track the right students into primary care service for rural/underserved NC





Other Innovative UNC Residency Programs

Family Medicine Underserved Track

- Partnering with Piedmont Health Services
- 100% of graduates placed in rural/underserved NC in first job
- Improved access to care
- Eliminated recruiting costs



Pediatrics Primary Care Track

- Partnering with Cone Health in Greensboro
- 100% of graduates serving in primary care pediatrics
- Distinct curriculum focused on primary care
- Peer and faculty support

Residency Training (GME) at UNC

- We have ~ 800 total residents
 - » 400 with salaries covered by CMS
 - » 400 with salaries covered in other ways
 - Almost all by UNC HCS or SOM
- Many are very subspecialized
 - » Which is part of who we are and need to be at UNC
 - » We provide the expertise our state needs
- **All residents provide lots of service to the underserved**
 - » Residents provide care for many high need patients
- **We have strength in core disciplines**
 - » We are ranked by US News & World Report #2 in Primary Care
- **We are developing innovative programs to help NC**
- Our programs are very popular and very competitive
 - » Family Medicine had 1093 applicants for 8 slots
 - » Surgery had 1184 applicants for 6 slots
 - » **Most UNC residencies could expand if there were more funding available**





Recommendations:

Investments in Medical Education to Benefit North Carolina

- Do not let the outstanding medical schools in North Carolina falter
- Invest in State support of Residency Slots in needed disciplines
 - » Support innovative programs, especially those that directly connect medical school and residency in North Carolina
 - » Link new GME programs to established academic centers with expertise in teaching
 - » Encourage the growth of tracks, like the underserved track and the primary care track, that focus on specific areas of need
 - » Monitor outcomes