



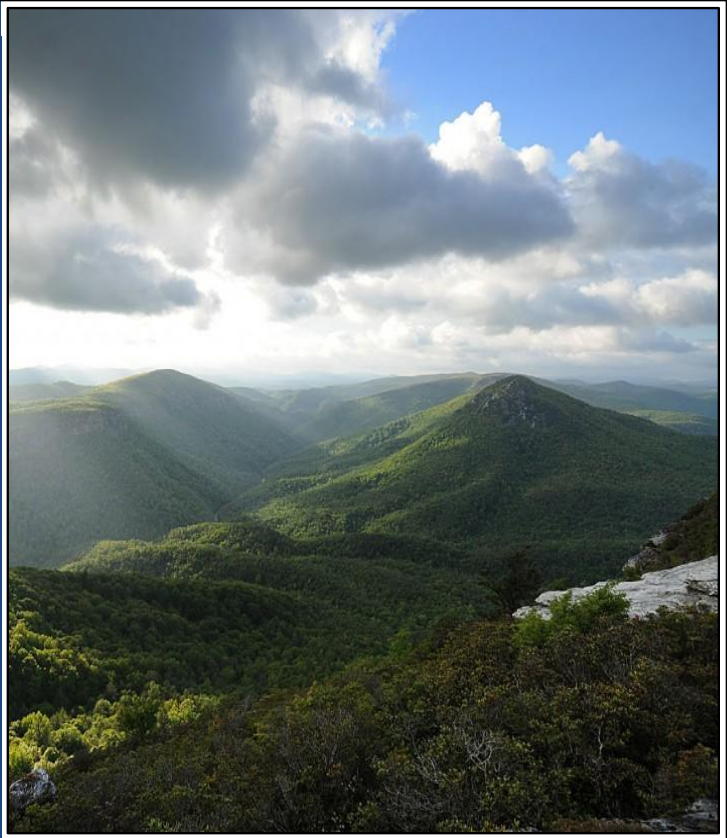
North Carolina  
School of Science  
and Mathematics

## NCSSM-Morganton Campus Planning

*Igniting innovation,  
cultivating community*

NC General Assembly

Raleigh, NC  
November 7, 2017



## Major Contributors



DUDA PAINE  
ARCHITECTS

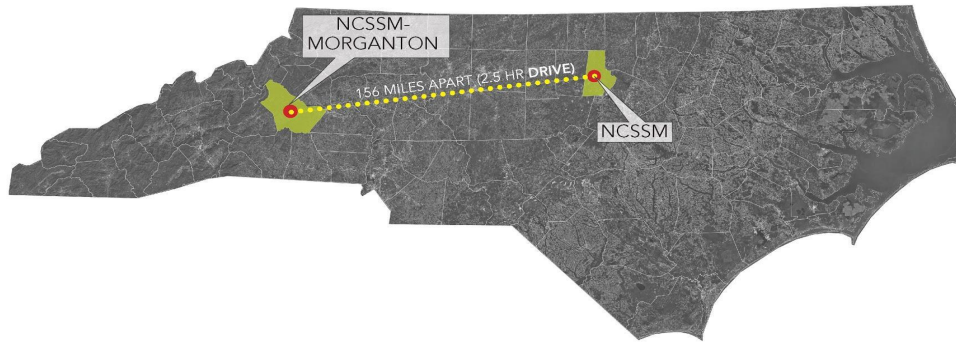
THE WILLIAM & IDA  
**FRIDAY INSTITUTE**  
FOR EDUCATIONAL INNOVATION

**dfi**



North Carolina  
School of Science  
and Mathematics





## The Road to Morganton



- 2010** NCSSM reaches its capacity of 680 students
- 2012** Grassroots effort to add a second campus in western NC
- 2013** North Carolina General Assembly (NCGA) commissions a feasibility study on expanding NCSSM
- 2015** NCGA votes to approve \$2B Connect NC bond, including \$58M for second campus of NCSSM in Morganton
- March 15, 2016** North Carolina voters approve Connect NC bond
- September 2016** Duda|Paine is selected as the architectural firm for design and development
- November 2016** The Friday Institute is selected as the educational program consultants
- December 2016** Kevin Baxter is hired as the Director of Western Campus Planning & Project Management



## Western Campus Core Planning Team

- **Membership:**  
23 members representing the NCSSM, K-16, business, government, and *Unifour* communities
- **Key Activities (Jan-Sept 2017):**
  - 8 Core Planning Team meetings
  - 9 Summer Listening Tour events
  - Site Visits to South Carolina and Virginia
  - Thousands engaged in surveys, focus groups, presentations, and design charrettes





NCSSM

## Outreach and External Engagement

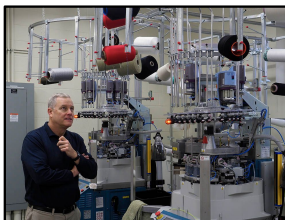
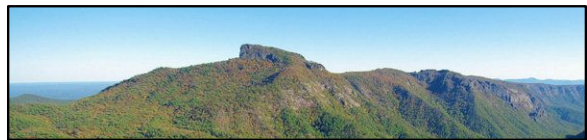
- Business & Industry
- Economic Development
- K-16 Education
- Local, Regional, State Government
- Natural Resource Areas
- Non-Profit Organizations
- NCSSM Affiliates
- UNC System Institutions



NCSSM

## Potential Unique Curricular Opportunities

- Ag-Tech and Bio-Tech
- Data Science & Technology
- Engineering & Advanced Manufacturing
- Environmental Science
- Renewable Energy







## Major Deliverables

- **Site Selection**
  - May 26, 2017
    - Eastern Ridge of the North Carolina School for the Deaf
- **Recommendations**
  - September 29, 2017
    - Master Site Plan
    - Educational Program Vision



# NCSSM

## NCSSM-Morganton Campus Planning

Recommendations:  
Educational Program  
Vision





## Defining Features

- The campus shall be known as NCSSM-Morganton.
- NCSSM-Morganton will be located on the eastern ridge of the NC School for the Deaf.
- NCSSM-Morganton will open in 2021 and will serve 150 Juniors and 150 Seniors annually.
- All faculty will possess advanced degrees.
- The academic calendar and admissions model will be standardized across the institution.
- NCSSM-Morganton will feature a robust calendar of summer program activity.
- NCSSM-Morganton will allow for expanded distance education and professional development opportunities.
- NCSSM-Morganton is committed to leveraging shared services and facilities with regional partners and NCSSM in Durham.

## Overall Academic Vision Statement

### Guiding Principles

- Preservation of Institutional Values
- Acknowledgement of Foundational Principles shared across Campuses
- Establishment of Differentiating Flexibilities for the NCSSM-Morganton Program



## NCSSM – MORGANTON CAMPUS PLANNING

### SITE CONTEXT CREATES ACADEMIC DISTRICT

- ACADEMIC FACILITIES
- PRIMARY ROAD
- 1-MILE PEDESTRIAN LOOP
- IMPROVED INTERSECTIONS (PROPOSED)
- DISTRICT TRAILS

#### POTENTIAL SHARED FACILITIES

##### NCSD Campus Facilities

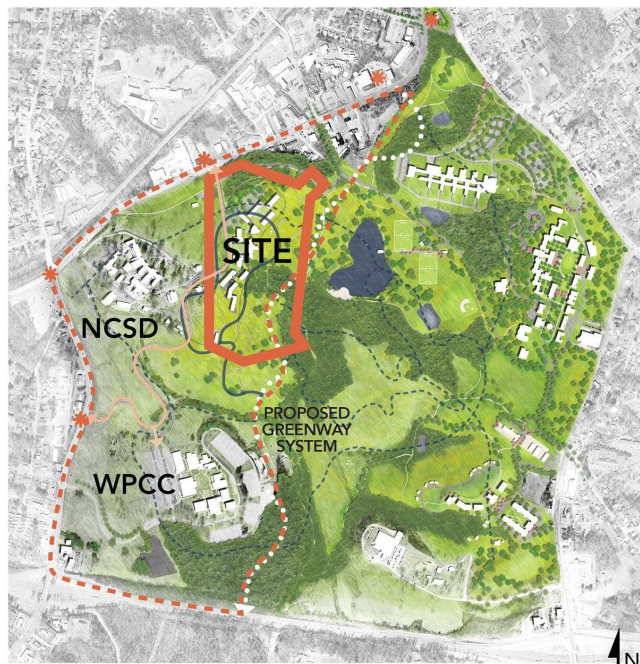
1. McCord Gym
2. Underhill Gym
3. Alumni Field

##### WPCC Campus Amenities

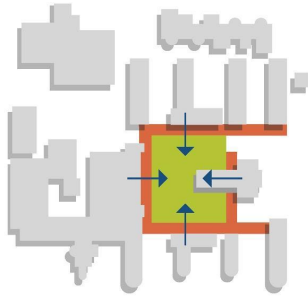
1. WPCC Mountain Biking Trail
2. WPCC Hiking Trail
3. High Ropes Course (Alpine Tower and Zip Lines)
4. Tennis Courts
5. Pond
6. Greenhouses

##### WPCC Campus Facilities

1. Phifer Learning Resource Center: Library/Cafe/Drama Studio
2. Breiden Complex: Technical spaces and studios
3. Mechatronics Building
4. Rostan Building: Pottery Studio
5. Patton Hall: Therapeutic Recreation spaces and studios

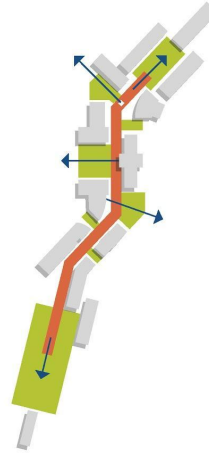


## ORGANIZING CAMPUS STRUCTURE



NCSSM - DURHAM  
"QUADRANGLE"

CENTRALIZED "COLLEGE"  
INWARDLY FOCUSED  
CREATE GREEN IN AN URBAN CONTEXT  
FIXED GROWTH AS INFILL



NCSSM - MORGANTON  
"ACADEMIC STREET"

SPINE AS ORGANIZER  
OUTWARDLY FOCUSED  
OPTIMIZE LONG VIEWS AND THE ENVIRONMENT  
FLEXIBLE / ALLOWS FOR GROWTH



NCSSM - MORGANTON CAMPUS ADVANCED PLANNING

## MASTER PLAN GUIDING PRINCIPLES



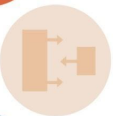
IDENTITY



COMMUNITY



CONNECTIVITY



FLEXIBILITY



ENVIRONMENTAL  
STEWARDSHIP



WELLNESS



IDENTITY



COMMUNITY



WELLNESS



ENVIRONMENTAL STEWARDSHIP



FLEXIBILITY



CONNECTIVITY



NCSSM - MORGANTON CAMPUS ADVANCED PLANNING



## AERIAL SITE OVERVIEW



## NCSSM-MORGANTON EASTERN RIDGE SITE





## ADAPTIVE RE-USE BUILDINGS



## ADAPTIVE RE-USE - GOODWIN HALL



## ADAPTIVE RE-USE - JOINER HALL

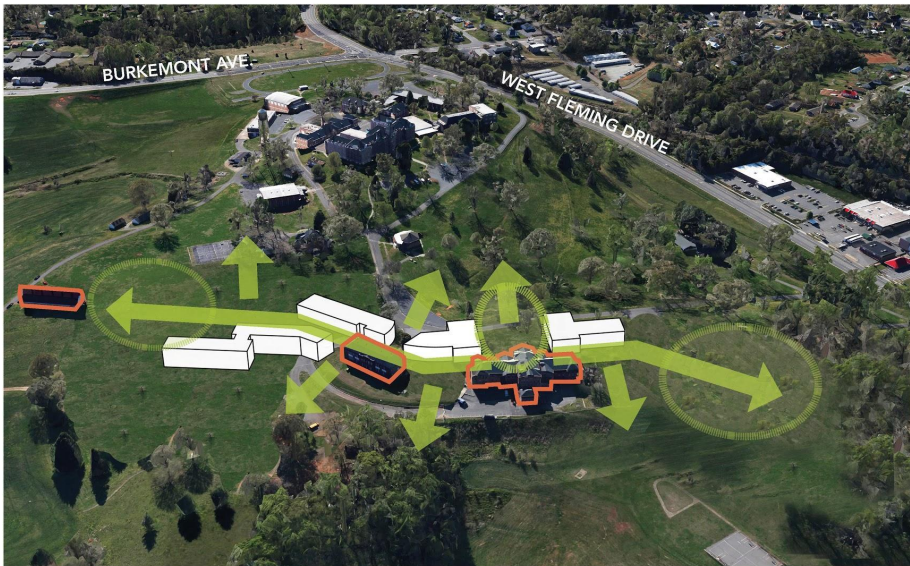


## ADAPTIVE RE-USE - CATTLE BARN

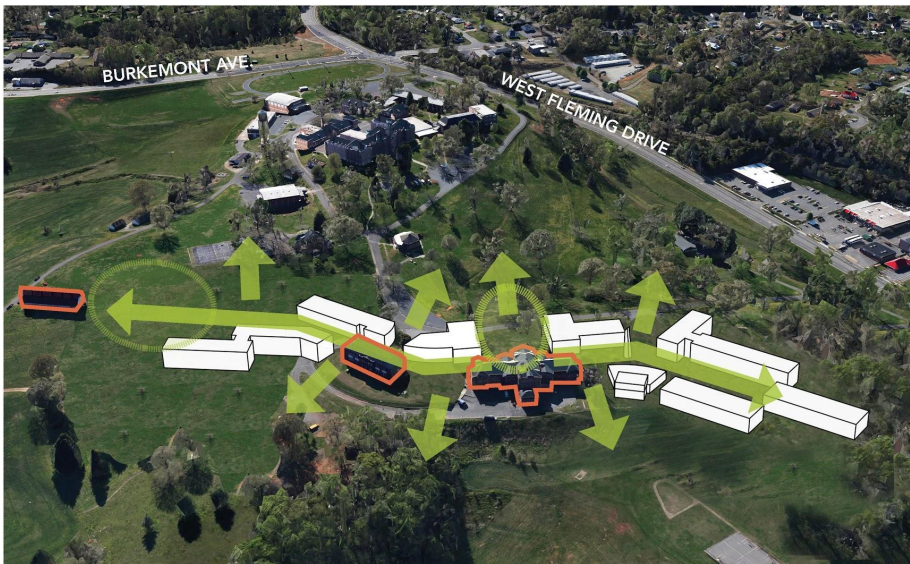




## CAMPUS APPROACH

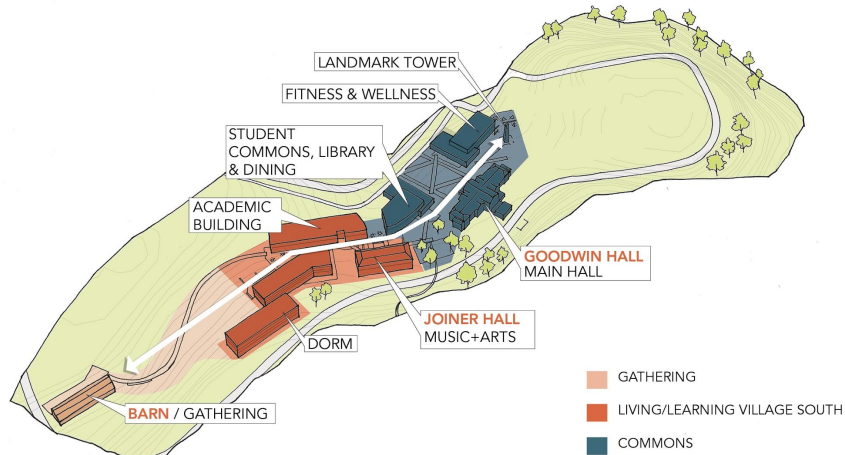


## CAMPUS APPROACH

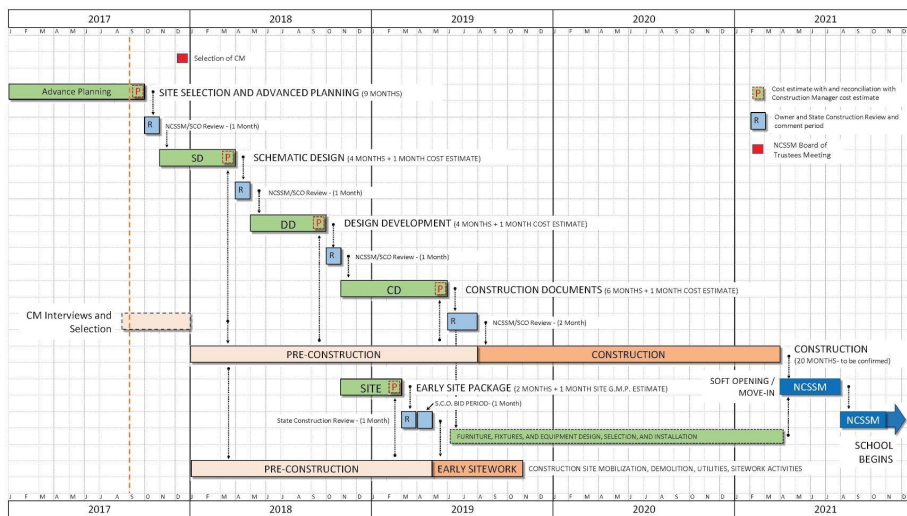


## CAMPUS BUILDING OVERVIEW

As described in the Friday Institute's Educational Program Vision, NCSSM-Morganton will establish a new Living/Learning Model: NCSSM-Morganton's open areas and blank canvas offers an opportunity to develop the types of spaces needed to support a diverse, year-round student body with a healthy living environment, varied activities, personalized options, and flexibility.



## DESIGN/CONSTRUCTION TIMELINE



## Asset Inventory Project

*Eight County Region*



North Carolina  
School of Science  
and Mathematics

- Identification and evaluation of regional assets to Morganton and Burke County.
- Alignment with Broughton District vision and NCSSM-Morganton
- Clusters of interest and/or specific assets that can be leveraged for strategic partnerships with NCSSM
  - Curricular and programmatic opportunities
  - Mentorship and internship placements
  - Research initiatives
  - Shared facilities
  - Fundraising

### Themes

- Advanced Manufacturing
- Artisan Industries & Trades
- Data Science
- Health & Wellness
- Renewable Energy
- Sustainable Agriculture & Food Science

### Assets

- Private Industry
- Educational Institutions
- Public Sector
- Non-Profit
- Associations

### Counties

- Burke
- Alexander
- Caldwell
- Catawba
- McDowell
- Rutherford
- Buncombe
- Mecklenburg



North Carolina  
School of Science  
and Mathematics



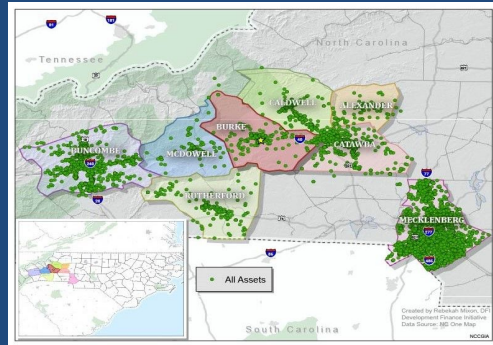
## Asset Mapping Outputs

*Eight County Region*



North Carolina  
School of Science  
and Mathematics

- Database of 10,000+ assets
- Visual representations of assets (maps)
- Briefings on asset themes
- Partnership leads



- 10,343 Assets identified to date representing 148,000 employees and \$27.7 billion in sales



NCSSM

## Next Steps

- Master Plan is submitted for review by State Construction Office
- Schematic design for phase one
- Selection of Construction Manager at-risk
- Additional site visits
- Completion of Asset Inventory
- Begin to operationalize elements of the educational program plan
- Continue to identify partners and champions for project
- Support Reimagining Broughton efforts





## Questions



Kevin Baxter  
Director of Western Campus Planning  
kevin.baxter@ncssm.edu  
828.448.3540

[www.ncssm.edu/morgantoncampus](http://www.ncssm.edu/morgantoncampus)



@NCSSM\_Morganton



NCSSM-Morganton



NCSSM-Morganton