



Public Schools of North Carolina  
State Board of Education  
Department of Public Instruction

---

# Report to the North Carolina General Assembly

---

School Connectivity Initiative

*SL 2007-323, Sec. 7.28(d)*

*(HB 1473, 2007 Budget Act)*

---

Date Due: January 15, 2013

Report # 25

DPI Chronological Schedule, 2012-2013

## **STATE BOARD OF EDUCATION**

The guiding mission of the North Carolina State Board of Education is that every public school student will graduate from high school, globally competitive for work and postsecondary education and prepared for life in the 21st Century.

**WILLIAM C. HARRISON**  
Chairman :: Fayetteville

**REGINALD KENAN**  
Rose Hill

**JOHN A. TATE III**  
Charlotte

**WAYNE MCDEVITT**  
Vice Chair :: Asheville

**KEVIN D. HOWELL**  
Raleigh

**ROBERT "TOM" SPEED**  
Boone

**WALTER DALTON**  
Lieutenant Governor :: Rutherfordton

**SHIRLEY E. HARRIS**  
Troy

**MELISSA E. BARTLETT**  
Roxboro

**JANET COWELL**  
State Treasurer :: Raleigh

**CHRISTINE J. GREENE**  
High Point

**PATRICIA N. WILLOUGHBY**  
Raleigh

**JEAN W. WOOLARD**  
Plymouth

## **NC DEPARTMENT OF PUBLIC INSTRUCTION**

**June St. Clair Atkinson, Ed.D., State Superintendent**  
**301 N. Wilmington Street :: Raleigh, North Carolina 27601-2825**

In compliance with federal law, NC Public Schools administers all state-operated educational programs, employment activities and admissions without discrimination because of race, religion, national or ethnic origin, color, age, military service, disability, or gender, except where exemption is appropriate and allowed by law.

**Inquiries or complaints regarding discrimination issues should be directed to:**

Dr. Rebecca Garland, Chief Academic Officer :: Academic Services and Instructional Support  
6368 Mail Service Center, Raleigh, NC 27699-6368 :: Telephone: (919) 807-3200 :: Fax: (919) 807-4065

**Visit us on the Web :: [www.ncpublicschools.org](http://www.ncpublicschools.org)**

# **SCHOOL CONNECTIVITY INITIATIVE**

## **Legislative Update**

---

*Prepared by*

**Barry Pace**

Manager – Connectivity Services  
Financial and Business Services Area  
North Carolina Department of Public Instruction

*Submitted to*

Joint Legislative Oversight Committee on Information Technology  
Joint Legislative Education Oversight Committee  
Office of State Budget and Management  
State Information Technology Officer  
Fiscal Research Division

---

**January 15, 2013**

## TABLE OF CONTENTS

<b>FOREWORD</b> .....	3
<b>EXECUTIVE SUMMARY</b> .....	4
<b>PERFORMANCE OVERVIEW</b> .....	8
<b>CONNECTIVITY STAFF SALARY REPORT</b> .....	13
<i>As required by Session Law 2007-323 SECTION 7.28.(g)</i>	
<b>SCI BUDGET SNAPSHOT</b> .....	14
<b>SUPPORTING DOCUMENTATION</b> .....	15

---

## FORWARD

---

Pursuant to *Session Law 2007-323 SECTION 7.28.(d)*, we offer this School Connectivity Initiative (SCI) Report. In this report we provide an update on SCI activities beginning January 1, 2012 and ending January 1, 2013. The core provision for the SCI is specified as follows:

*SECTION 7.28.(b) As recommended in the Joint Report on Information Technology, February 2007, the State Board of Education shall contract with an entity that has the capacity of serving as the administrator of the School Connectivity Initiative and has demonstrated success in providing network services to education institutions in the State. The funds appropriated in this act shall be used to implement a plan approved by the State Board of Education to enhance the technology infrastructure for public schools that supports teaching and learning in the classrooms. The plan shall include the following components:*

- (1) A business plan with timelines, clearly defined outcomes and an operational model including a governance structure, personnel, e-Rate reimbursement, support services to LEA's and schools and budget;*
- (2) Assurances for a fair and open bidding and contracting process;*
- (3) Technology assessment site survey template;*
- (4) Documentation of how the technology will be used to enhance teaching in learning;*
- (5) Documentation of how existing State-invested funds for technology are maximized to implement the school connectivity initiative;*
- (6) The number, location and schedule of sites to be served in 2007-2008 and in 2008-2009; and*
- (7) Assurances that local school administrative units will upgrade internal networks in schools, provide technology tools, and support for teachers and students to use technology to improve teaching and learning.*

The success of the School Connectivity Initiative is unmistakable. School Connectivity Initiative, "SCI", funding drives enhanced fiber services and improved educational outcomes in every county. Over half of the initial district connections have already been upgraded due to growth in traffic volume driven by digital learning. The reach of optical fiber into every corner of our state is netting economic benefits for Businesses, Healthcare, Government, Libraries, Community Colleges, and Public Safety. Every county can provide enhanced public services and compete effectively for new jobs that are driven by the availability, accuracy, and timeliness of data.

---

## EXECUTIVE SUMMARY

---

The NC State Board of Education approved the School Connectivity Initiative *Implementation and Operating Plan* on Thursday, August 2, 2007. The SCI program was managed through the NC ITS Enterprise Project Management Office supervising projects that gained initial EPMO approval in September 2007. Within the SCI program were five individual projects addressing **Connectivity, Core Services, Collaboration, Organization, and Funding**. All five projects were completed in 2009 and produced the following deliverables:

- All 115 Local Education Agencies (LEAs) connected to MCNC's North Carolina Research and Education Network (NCREN)
- Establishment of Client Network Engineering Services for LEAs
- Establishment of E-Rate Filing Assistance Bureau
- Development of a Technology Master Plan
- Development of Governance and Funding Plans

The budget for FY2012 was \$19,892,040 and \$2,362,675 in FY2011 E-rate rebate receipts, totaling \$22,254,715. Expenses were \$19,637,558.89.

The budget for FY2013 was \$19,919,762 and \$523,414 in FY2012 carry-over, and \$3,884,233 in FY2012 E-rate rebate receipts, totaling \$24,327,409. Expenses are projected to be \$23,294,242.

**LOOKING FORWARD** - Projected expenses for FY2014 are in the \$25M - \$30M range due to rapid growth in bandwidth needs and new charter schools. FY2013 E-Rate rebate receipts are \$3,793,950.70. If approximately \$1,000,000 is brought forward in addition to bringing forward the FY2013 E-Rate rebate receipts, (added to the current recurring budget \$19,919,762 + 1,000,000 + 3,793,950.70) approximately \$24,713,712.70 will be available. A potential forward thinking strategy could be to implement new annual LEA and charter school internal infrastructure (e.g. high-density wireless) funding through the School Connectivity project budget. In other words, increase the School Connectivity appropriation to \$60M for the biennial and designate DPI Connectivity Services to appropriately allocate between external (connection to state network), wide-area network (PRC 073), and internal infrastructure (e.g. classroom wireless access) connectivity based on verification of expenses. The internal infrastructure component could include a matching requirement. This would address bandwidth growth, charter expansion, and infrastructure including the fact that Priority 2 E-Rate (Internal Connections) funding is no longer a given for even the neediest applicants.

In 2012, the School Connectivity Initiative achieved the following goals:

- Partnered with ITS and MCNC to further implement an E-rate eligible K-12 State Network ISP (Internet access) service bundling self-sustaining network-centric products and services such as web security, content filtering, and managed firewall.
- Monitored and proactively upgraded bandwidth in 50 ~ districts, 10 ~ charters.
- Achieved 40% (38/115 districts and 23/39 NCREN charters) and 46% (49/115 districts and 22/39 NCREN charters) take rate on filtering and firewall service in 18 months. An additional 25 are currently evaluating filtering service. The take rate should continue to climb as local filtering and firewall contracts expire.
- Further leveraged Federal E-Rate dollars through consortia applications and LEA E-rate support. Third straight year of record setting E-Rate dollars requested by North Carolina applicants.
- Assisted in recouping local E-rate dollars via multiple successful FCC appeals and outreach efforts.
- Assisted 16 new Charter Schools including 6 Fast Track Charter Schools in connecting to NCREN.
- Assisted LEAs in developing and revising Internet Safety Policy as required by the Protecting Children in the 21<sup>st</sup> Century Act and subsequent FCC order.
- Increased NCREN and E-Rate participation by, and support for, Charter Schools.
- Implemented funding mechanism for multi-location NCREN Charter Schools.
- Collectively and synergistically supported LEA and agency initiatives (e.g. READY).
- Assisted LEAs in further reducing the number of remaining schools not connected via fiber.
- Further assisted LEAs in deploying and maintaining wireless infrastructure. The MCNC Client Network Engineering (CNE) team conducted 19 LEA network assessments, primarily to assess LEA readiness for 1:1 computing initiatives. CNE also worked with 28 LEAs supporting their migration to Google hosted email, a strategy that aligns with the NC Education Cloud shared services initiative.
- Continued to encourage creativity, innovation and collaboration (e.g. Certified Education Chief Technology Officer Certification [CCTO]).

In 2013, the School Connectivity Initiative plans to achieve the following goals:

- Work with MCNC, ITS, and LEAs to continue phasing in and monitoring the deployment of new fiscally self-sustaining network-centric products and services such as hosted VoIP, web security, content filtering, and managed firewall services.
- Continue to monitor and proactively upgrade LEA and Charter bandwidth as demand continues to increase at a nearly twofold rate.

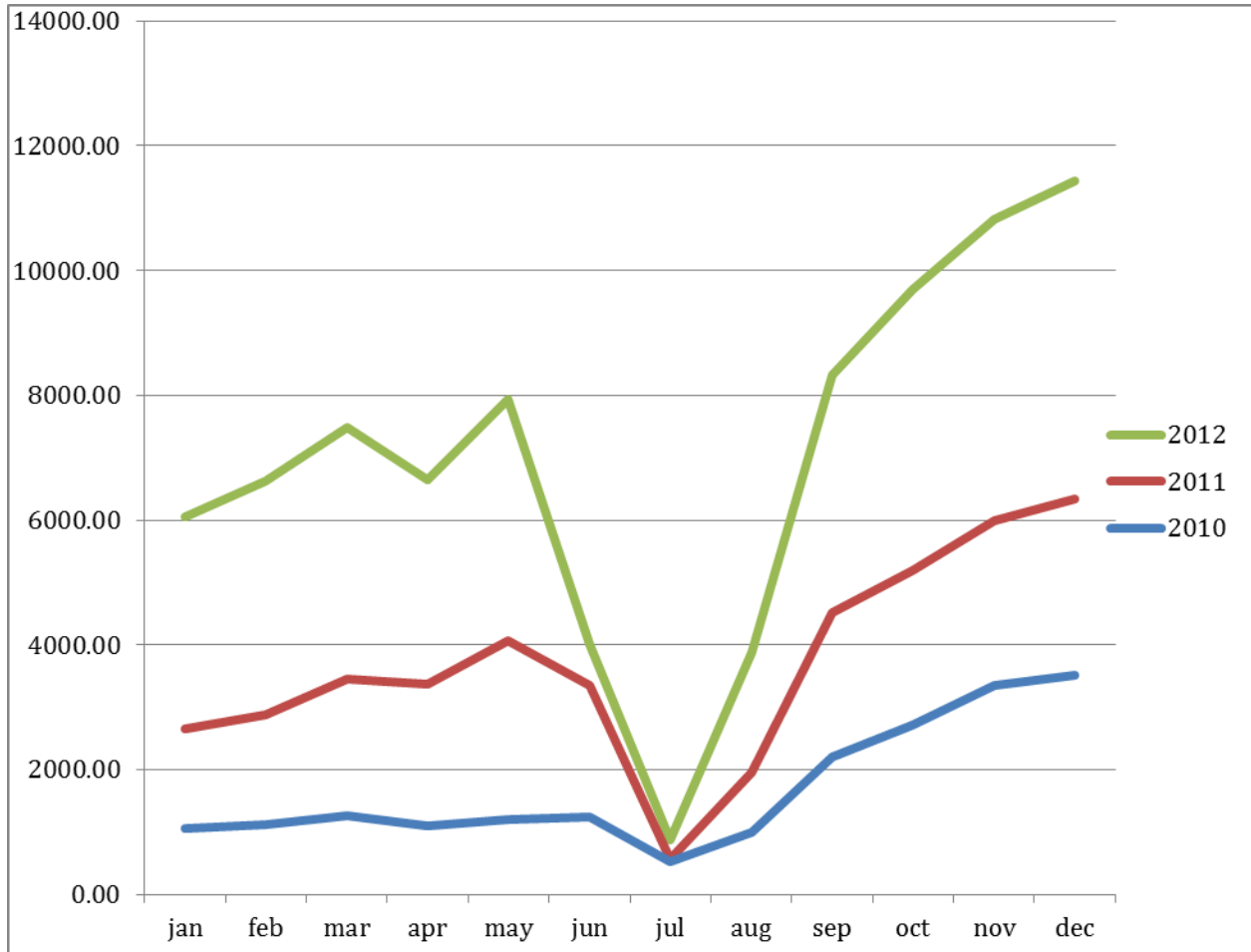
- Further leverage Federal E-Rate dollars through State Network, RttT Consortium Buying Working Group, and LEA E-rate support and training.
- Continue to increase NCREN and E-Rate participation by, and support for, charters.
- Plan and budget for growth in the number of Charter Schools.
- Plan and budget for rising LEA and Charter School bandwidth utilization.
- Work with ITS to amend current pricing sheet to account for MCNC's direct fiber service offering, additional charter schools, additional trunk capacity needs, and additional bandwidth speeds up to 10,000 Mbps.
- Further assist LEAs and Charter Schools in reducing the number of remaining schools not connected via fiber.
- Further assist LEAs in deploying and maintaining wireless infrastructure to support 1 to 1 or Bring Your Own Device (BYOD) learning initiatives.
- Further assist LEAs in migrating to cloud-based services and continue working collaboratively to implement the NC Education Cloud.
- Partner with UNC School of Government to make an LEA specific IT RFP template and procurement information and education portal available to CFOs, CTOs and purchasing agents.
- Continue to encourage creativity, innovation and collaboration (e.g. CeCTO).
- Promote and facilitate a statewide working group with the goal of lowering prices for at home/off campus student connectivity and device access (READY Anywhere!).

#### Key Risks to Success

Bandwidth utilization has been increasing at nearly a twofold rate year-over-year, as illustrated in the chart below, requiring faster and more complex circuits and equipment at higher costs. With the cap on charter schools now lifted, the long-term financial sustainability, at current funding levels, will also be dependent upon the quantity and rate at which new charter schools are added to the NCREN network. Additionally, existing charter schools opening additional locations will further impact the bottom line.



Combined K12/Charter State Network Bandwidth Utilization Year-Over-Year (Mbps)



---

## PERFORMANCE OVERVIEW

---

The School Connectivity Initiative (SCI) has five areas of focus: **Connectivity, Support Services, Collaboration, Organization, and Funding.**

In 2012, the Initiative upgraded 49 of the 115 LEA NCREN connections based on usage, a few multiple times, increased the number of Charter Schools connecting to the NCREN network from 24 to 39, administrated year two of a three year K-12 State Network bundled services agreement, witnessed a record 88% utilization of committed Funding Year 2008 E-Rate federal funds, observed a record \$88.5M in E-Rate federal funds committed in Funding Year 2010, assisted in a record \$112M in E-rate funds requested for Funding Year 2011 and \$124M in E-Rate funds requested for Funding Year 2012, deciphered significant E-Rate rule changes and educated applicants in preparation for Funding Year 2013, provided network-related technical assistance to numerous LEAs and Charter Schools, assisted numerous districts and charters in migrating to Google Apps for Education, worked collaboratively to roll out Microsoft IT Academy state-wide, and enabled 23 LEA and Charter School participants to graduate from the highly successful Certified Educational Chief Technology Officer program.

### 1. ESTABLISH A SHARED EDUCATION BACKBONE THAT PROVIDES FOR K-12 CONNECTIVITY

- All 115 LEAs remain connected to NCREN, while 39 charters are now part of the education connectivity backbone. Additionally, 6 Charters are in queue for NCREN, while many of the 25 new charters are planning to also utilize NCREN. The number of charters included on the K-12 state network consortium E-Rate application for Funding Year 2013 could double from 30 to 60. Additionally, Educational Services for the Deaf and Blind (ESDB) schools and the North East Regional School of Biotechnology and Agriscience (NERSBA) are connected to NCREN.
- The SCI team procured and negotiated a three-year bundled ISP services agreement with ITS in 2011. ITS partners with MCNC for bundled ISP services while continuing to leverage statewide carrier contracts managed by ITS to accommodate the connection of the LEAs. NC ITS manages contracts with AT&T, CenturyLink, and Time Warner Cable. In general, AT&T is awarded connectivity business in their footprint, CenturyLink is awarded business in their footprint, and Time Warner Cable is awarded business in their footprint when it does not overlap with either AT&T or CenturyLink. In 2012 ITS began using MCNC's direct fiber service offering to directly connect LEAs and Charter Schools where available in lieu of traditional carrier contracts to save money and provide an even higher degree of service reliability. For LEAs that do not have access to one of the state contract carriers or MCNC fiber, the NC ITS continued established relationships with DukeNet, e-Polk, Broadplex, Country Cable, Balsam West, ERC Broadband, Cox Cable, Charter Communications, and Clarity Communications.
- To assist with implementation of services, as well as the ongoing need of information sharing, MCNC developed and deployed an online measurement and monitoring resource for K12 connectivity accessible at <http://tools.ncren.net>. A collaborative information

portal for the K12 community has also been established and is available at <http://edspace.mcnc.org>. In addition a K-12 forum was established at <https://www.mcnc.org/forums>. A per student utilization report is also now available.

- The NCREN network performance has averaged 99.95% uptime across all LEA connections with very low latency, which continues to exceed expectations. LEA Technology Directors continue to communicate to SCI staff how impressed they have been with the NCREN staff in response times to network incidents as well as answering their questions.
- Bandwidth utilization for LEAs and Charter Schools meeting the upgrade threshold is now reported daily.

## 2. PROVIDE AN OPT-IN **SERVICES** MODEL THAT INCLUDES A COMPREHENSIVE SET OF CORE SERVICES SUPPORTING RELIABLE, HIGH-BANDWIDTH CONNECTIVITY INCLUDING CENTRAL E-RATE AND ENGINEERING SERVICES AS WELL AS VALUE-ADDED NETWORK SERVICES OFFERED TO IMPROVE OPERATIONAL EFFICIENCY WITHIN AND AMONG LEAs.

- The E-rate Support Service is a function of the NC DPI Financial and Business Services Technology and Information Service area. In FY2012 the SCI team provided comprehensive training and support services to LEA's and charters via two regional E-rate specialists. The SCI team continues to hear positive feedback from LEAs and charters regarding the benefits of this service. We have also retained E-rate Central, a nationally recognized leader in E-rate consulting and services, to support our E-rate Support Service functions and act as a subject level expert under the management of the NC DPI Connectivity Services Manager/State E-rate Coordinator.
- The E-rate Support Service is continuing to explore opportunities to leverage new FCC E-rate rules to expand centralized services (e.g. consortium buying) and federal funding.
- The Network Consulting Service continues to assist public schools with technical engineering and consultation services. In 2011, a new Client Network Engineering (CNE) agreement was executed between NC DPI and MCNC for the Network Consulting Service formerly bound to the NC ITS-MCNC master agreement, *Client Network Engineering and Support Services*.
- Two regionalized NC DPI Connectivity Services Network Analysts assist public schools with technical planning and consultation (e.g. Google Apps for Education migration, RttT wireless deployment, and RFP review) and work closely with the CNE support team. LEAs support requests continue to trend upward for this service with increasing complexity of challenges. We interpret this as an indication of an increase in the variety and sophistication of services now being delivered to the classroom.
- NC DPI Connectivity Services continued to provide an expanded list of on-demand and proactive support services to state agencies, LEAs and charters in 2012, including

Microsoft IT Academy Deployment, procurement reviews, Education Cloud planning, ESDB support, NERSBA support, State E-rate consortium coordination, and others.

### 3. IMPLEMENT A COMMUNITY-DRIVEN **COLLABORATION** MODEL

In FY2012 the SCI team continued implementation of the SCI plan, including providing support for Cloud and other RttT initiatives. The SCI implementation requires collaboration with LEA and charter leadership teams, with service providers, and with policy makers. As such, the SCI team attended regional and state gatherings of technology directors, technicians, instructional technologists, superintendents, and legislators. During these gatherings SCI team members presented status reports, collected input, and collaborated on Cloud, RttT, and READY planning and marketing.

In addition to our participation in stakeholder gatherings around NC, the team built and maintains an information website that shares general project information, presentations, memoranda, information packets, and frequently asked questions.

As an example of the benefits of this type of SCI interaction, based on feedback from LEA Technology Directors, a request was made to the UNC School of Government to provide an LEA specific IT RFP guide. Through collaboration with LEA Technology Director's, LEA Purchasing Agents, and UNC School of Government attorneys an LEA specific IT procurement RFP is available.

### 4. DEVELOP AN EFFECTIVE AND EFFICIENT OPERATING ORGANIZATION

- The SCI team has developed a set of recommendations related to effective and efficient organization and governance. In short, the NC DPI Connectivity Services Manager serves as the business officer for the SCI budget, and the policy interface to oversight groups. The DPI Connectivity Manager is accountable to the NC State Board of Education and acts as agent of the SBE in providing required annual reporting to legislative oversight groups. The DPI Connectivity Team advocates for the LEAs and charters to myriad stakeholders, and works together to provide highly valued support services to the community.
- With a team of four individuals, the SCI staff must continually seek maximum operational and service level efficiency through innovation and collaboration. The SCI team has leveraged cloud based application services to maximize communications and operations and has been able to share best practices with LEAs and charters.

### 5. SUSTAIN THE OPERATION LEVERAGING MYRIAD **FUNDING** RESOURCES INCLUDING STATE, FEDERAL, LOCAL, AND PRIVATE SECTOR.

- The NC DPI provided FY2013 connectivity distributions to LEAs and Charter Schools in October and December 2012 respectively. As reference, the NC DPI provided FY2012 connectivity distributions to LEAs and Charter Schools in October and December 2011 respectively. The SCI team verified allotment amounts for all LEAs and Charter Schools and provided the NC DPI finance office with amounts based on a process vetted by the LEA community. The SCI team collected updated SCI MOU

packets as needed as part of the FY2013 distribution process. The MOU packet includes:

- A three year MOU defining the appropriate use and distribution terms to provide the “assurances” specified in the special provisions of SL2007-323 Section 7.28.(b) and 7.28.(c).
  - A three year letter of agency (LOA) allowing the state to file consortium E-rate documents
  - A Form 479 (CIPA Compliance) that NC DPI must collect annual to verify E-rate Internet Safety Policy and filtering compliance by all consortium members.
  - Instructions to provide contract and invoice materials for verification purposes
  - Explanation of Charter Connectivity Funding options (if applicable).
  - Explanation of LOA requirements
- In addition to the over \$10M annual LEA and Charter School connectivity distributions this year, which help offset local costs (e.g. Wide Area Network), NC DPI will bear a cost of, depending on the number of bandwidth upgrades and charter connections during the fiscal year, between \$11M-\$12M for “bundled ISP” services. Included in the ITS bundled pricing is a fiber telecommunications circuit from each LEA to the MCNC Regional Connect (via AT&T, CenturyLink, Time Warner, MCNC, etc.), direct NCREN Internet access and support, web security (i.e. firewall and filtering) as well as customer premise equipment (i.e. router) for each LEA and Charter School. Additionally, between \$1M-\$1.2M NC DPI connectivity funds provide LEAs and Charter Schools with access to MCNC’s advanced client network engineering services (e.g. wired and wireless network assessments, risk analysis, etc.) and training. NC DPI applies for E-rate discounts on the “bundled ISP” services. NCDPI has worked in conjunction with E-rate Central, a nationally recognized E-rate Compliance Firm, leveraging new FCC rules regarding fiber networks, in order to increase the proportion of these goods and services receiving discounts. The projected E-rate reimbursements are key to paying for additional upgrades and additional NCREN connected charter schools over the life of the current three-year contract. With the cap on charter schools now lifted, the long-term financial sustainability, at current funding levels, will be dependent upon the quantity and rate at which new charter schools are added to the NCREN network. Bandwidth utilization has been increasing at a 36% annual growth rate while circuit costs are creeping upwards. Additionally, existing charter schools opening additional locations will further impact the bottom line.
  - The NC DPI Connectivity Services and Instructional Technology Division, along with MCNC and the UNC School of Government, sponsor the highly successful Certified educational Chief Technology Officer’s (CeCTO) program. This program produced 25 new graduates last year bringing the three-year total to 83. This training program, the only one of its kind in the nation, helps ensure utmost utilization of North Carolina’s one of a kind network. In 2013 approximately 20 new candidates will participate.
  - The E-rate support service assisted many LEAs and Charter Schools with

E-rate filing and audit processes, including a handful of successful appeals and averted denials or commitment adjustments. As mentioned previously, in Funding Year 2012, North Carolina applicants applied for a record \$124 million dollars in E-rate discounts for Telecommunications, Internet Access, Internal Connections, and Basic Maintenance of Internal Connections. This represented an increase of over \$12M from last year's record of \$112M requested. Last year's record was an increase of \$16M from the previous year. Unfortunately, increased demand on the E-Rate fund is making it more difficult for schools to leverage Priority 2 E-Rate discounts for Internal Connection infrastructure. In Funding Year 2012 only those schools at the highest discount level (90%) will receive this needed funding. Approximately \$25M in needed North Carolina applicant Internal Connections funding will be denied due to this high Priority 2 discount threshold. There is a potential for no, or only pro-rated, Priority 2 funding in Funding Year 2013 upcoming.

---

**CONNECTIVITY STAFF SALARY REPORT**

---

The following are NCDPI staff paid from School Connectivity Initiative funding and their respective salaries  
*Session Law 2007-323 SECTION 7.28.(g):*

---

TITLE OF POSITION AND DESCRIPTION OF DUTIES	SALARY AMOUNT
---	---------------

---

Network Analyst	\$81,107
-----------------	----------

*LEA technical consulting and planning services / performs myriad other duties as assigned*

---

Network Analyst	\$74,000
-----------------	----------

*LEA technical consulting and planning services / performs myriad other duties as assigned*

---

Education Program Administrator I	\$71,296
-----------------------------------	----------

*Connectivity Services Manager / Assist Public Schools with E-Rate process*

---

Education Program Administrator I	\$70,840
-----------------------------------	----------

*Assist Public Schools with E-Rate process / performs myriad other duties as assigned*

---

Education Consultant II      92%	\$65,173
----------------------------------	----------

*Assist with Instructional Technology Integration*

---

Education Consultant II      93%	\$51,953
----------------------------------	----------

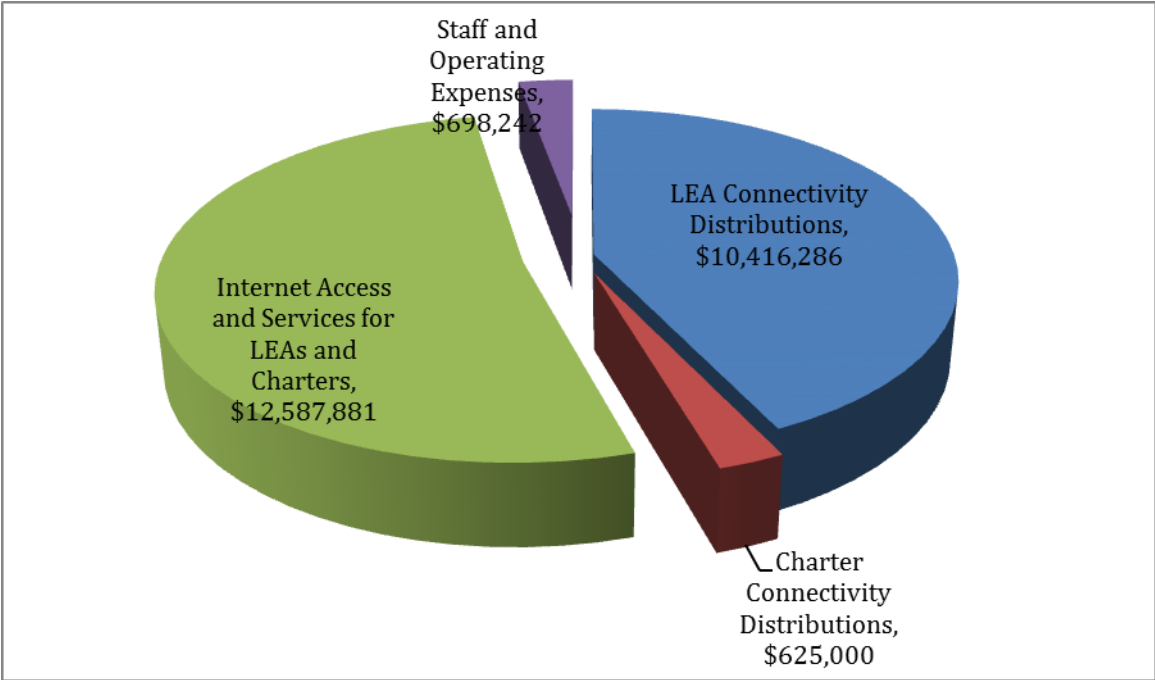
*Assist with Instructional Technology Integration*

---

---

**SCI BUDGET SNAPSHOT**

---



\*Chart reflects E-rate rebate receipts from previous year.



---

## SUPPORTING DOCUMENTS

---

The remainder of this report provides supporting documentation and is organized as follows:

1. **The School Connectivity LEA Allocation FY 2012-2013 report** dated November 7, 2012 shows the most recent LEA (i.e. Wide Area Network) connectivity allocations.
2. **The School Connectivity Charter Allocation FY 2011-2012 report** dated December 5, 2012 shows the most recent charter connectivity allocations.
3. **The Charter, ESDB, and NERSBA on NCREN** dated December 1, 2012 shows Charter Schools, ESDB Schools, and regional schools connected to NCREN as of December 1, 2012.
4. **The LEA and Charter School Upgrades and Uptime** dated December 1, 2012 shows calendar year bandwidth upgrades and NCREN K12 uptime.
5. **The FY2013 and FY2014 ITS K12 State Network ISP Service Expense Projections** dated December 1, 2012 provides insight into the projected annual costs for the K-12 state network. Costs are projected to continue to rise due to bandwidth utilization upgrades and new NCREN Charter Schools.
6. **The LEA and Charter School Per Student Utilization** through November 2012.
7. **The NC E-Rate Program Funding History report** dated December 10, 2012 provides details of the funding that has come to the state of North Carolina as a result of the E-rate program.
8. **The READY Anywhere! Introduction**, which went out to LEA and Charter School technology directors and superintendents in November 2012. An initial two-year working group was announced in December 2012 with the goal of lowering prices for at home/off campus student connectivity and device access.



**School Connectivity**  
**Fiscal Year 2012-13 Allotment**

LEA No.	LEA Name	Allotment
010	Alamance County	116,240
020	Alexander County	40,921
030	Alleghany County	15,838
040	Anson County	35,085
050	Ashe County	29,255
060	Avery County	29,675
070	Beaufort County	24,951
080	Bertie County	20,104
090	Bladen County	71,777
100	Brunswick County	31,114
110	Buncombe County	101,806
111	Asheville City	53,514
120	Burke County	49,697
130	Cabarrus County	252,742
132	Kannapolis City	59,030
140	Caldwell County	53,957
150	Camden County	18,022
160	Carteret County	105,646
170	Caswell County	14,465
180	Catawba County	155,348
181	Hickory City	20,250
182	Newton-Conover City	23,207
190	Chatham County	92,014
200	Cherokee County	110,956
210	Chowan County	32,556
220	Clay County	69,746
230	Cleveland County	63,290
240	Columbus County	54,281
241	Whiteville City	11,277
250	Craven County	21,523
260	Cumberland County	478,098
270	Currituck County	68,847
280	Dare County	45,895
290	Davidson County	84,793
291	Lexington City	11,670
292	Thomasville City	22,545
300	Davie County	103,218
310	Duplin County	57,600
320	Durham Public	228,019

LEA No.	LEA Name	Allotment
330	Edgecombe County	85,800
340	Forsyth County	432,171
350	Franklin County	78,030
360	Gaston County	162,893
370	Gates County	19,707
380	Graham County	2,198
390	Granville County	34,094
400	Greene County	21,132
410	Guilford County	391,143
420	Halifax County	25,397
421	Roanoke Rapids City	25,971
422	Weldon City	10,067
430	Harnett County	203,089
440	Haywood County	83,124
450	Henderson County	109,363
460	Hertford County	20,170
470	Hoke County	62,849
480	Hyde County	4,696
490	Iredell County	219,515
491	Mooresville City	82,474
500	Jackson County	58,260
510	Johnston County	136,843
520	Jones County	16,442
530	Lee County	181,889
540	Lenoir County	43,977
550	Lincoln County	89,484
560	Macon County	85,761
570	Madison County	96,111
580	Martin County	40,169
590	McDowell County	44,478
600	Mecklenburg County	471,188
610	Mitchell County	16,152
620	Montgomery County	50,051
630	Moore County	106,029
640	Nash-Rocky Mount	87,373
650	New Hanover County	97,755
660	Northampton County	21,570
670	Onslow County	178,161
680	Orange County	58,673

LEA No.	LEA Name	Allotment
681	Chapel Hill-Carrboro	72,535
690	Pamlico County	12,404
700	Pasquotank County	50,827
710	Pender County	63,782
720	Perquimans County	27,452
730	Person County	19,224
740	Pitt County	197,770
750	Polk County	14,535
760	Randolph County	161,595
761	Asheboro City	24,897
770	Richmond County	59,029
780	Robeson County	124,106
790	Rockingham County	160,050
800	Rowan-Salisbury	195,543
810	Rutherford County	24,883
820	Sampson County	53,760
821	Clinton City	22,896
830	Scotland County	42,344
840	Stanly County	122,496
850	Stokes County	156,868
860	Surry County	20,764
861	Elkin City	11,098
862	Mount Airy City	12,138
870	Swain County	23,540
880	Transylvania County	14,669
890	Tyrrell County	2,121
900	Union County	251,026
910	Vance County	45,625
920	Wake County	468,640
930	Warren County	30,306
940	Washington County	15,161
950	Watauga County	68,188
960	Wayne County	118,676
970	Wilkes County	71,266
980	Wilson County	58,560
990	Yadkin County	56,265
995	Yancey County	15,742
<b>Total Allotment</b>		<b>9,724,002</b>



Public Schools of North Carolina  
North Carolina Department of Public Instruction

School Connectivity

Fiscal Year 2012-13 Charter Allotment as of Revision 18 December 5, 2012

LEA No.	LEA Name	Allotment
01B	River Mill	-
01C	Clover Garden School	5,778
01D	The Hawbridge School (New Century)	-
06A	Grandfather Academy	13,080
06B	Cosmore Academy	3,854
07A	Washington Montessori	7,068
10A	Charter Day School	-
11A	Evergreen Community Charter	-
11B	ArtSpace Charter School	5,778
11K	Francine Delany School	-
12A	New Dimensions	5,778
13A	Carolina International School	-
16A	Cape Lookout Marine HS	7,752
16B	The Tiller School	7,752
19A	Chatham Charter	7,752
19B	The Woods Charter Sch.	-
20A	Learning Center	18,546
24N	Columbus Charter School	1,469
26B	Alpha Academy	6,468
27A	Water's Edge Village School	3,233
32A	Maureen Joy	8,670
32B	Healthy Start Academy	8,670
32C	Carter Community	8,670
32D	Research Heights School	8,670
32H	Research Triangle Charter Academy	8,670
32K	Central Park School for Children	-
32L	Voyager Academy	-
32M	Global Scholars Academy	1,448
32N	Research Triangle High School	1,448
33A	North East Carolina Preparatory School	5,301
34B	Quality Education Academy	2,410
34C	STEMM Academy of Winston Salem (Downtown Middle)	-
34D	Carter G. Woodson	5,778
34F	Forsyth Academy	5,778
34G	Arts-Based Elementary	5,778
35A	Cossockeek Charter School (A Child's Garden)	7,752
36B	Piedmont Community	8,304
36C	Mountain Island Charter School	-
41B	Greensboro Charter Academy	5,778

LEA No.	LEA Name	Allotment
41C	Guilford Preparatory Academy (Guilford Charter School)	5,778
41D	Phoenix Academy	8,670
41E	Triad Math and Science Academy	5,778
41G	Cornerstone Academy	1,930
41H	The College Preparatory and Leadership Academy of High Point	5,778
45A	The Mountain Community School	5,778
49B	American Renaissance Middle School	5,778
49D	Success Institute	965
49E	Pine Lake Preparatory	-
50A	Summit Charter	22,368
51A	Neuse Charter School	7,752
54A	Children's Village Academy	7,752
54B	Minston Charter Academy	7,752
55A	Lincoln Charter School	576
58B	Bear Grass	1,767
60A	Community Charter School	2,889
60B	Sugar Creek Charter School	2,889
60C	Kennedy Charter Public	5,778
60D	Lake Norman Charter Sch.	-
60E	Metrolina Regional Scholars' Academy	5,778
60G	Queen's Grant	5,778
60H	Crossroads Charter High	5,778
60I	Community School of Davidson	3,600
60J	Socrates Academy	-
60K	Charlotte Secondary School	5,778
60L	KIPP-Charlotte	-
60M	Covian Community School	2,410
63A	The Academy of Moore County	8,670
63B	STARS	7,752
64A	Rocky Mount Charter Public School	6,468
65A	Cape Fear Center for Inquiry	5,778
65B	Wilmington Preparatory Academy	5,778
66A	Gaston College Preparatory	7,068
68A	Orange Charter School	5,171
68N	PACE Academy	5,778
69A	Appalachee Charter School	7,752
73A	Bethel Hill	-
73B	Roxboro Community	7,752
78A	OS Academy	5,778

LEA No.	LEA Name	Allotment
79A	Bethany Community Middle School	5,778
81A	Thomas Jefferson Classical Academy	5,778
81B	Lake Lure Classical Academy	5,778
84B	Gray Stone Day School	8,670
86T	Millennium Charter Academy	7,752
87A	Mountain Discovery	18,546
88A	Brevard Academy	19,578
90A	Union Academy	3,750
91A	Vance Charter School	7,068
91B	Henderson Collegiate	7,068
92B	Explors Middle School	2,410
92D	Magellan Charter	-
92E	Sterling Montessori	3,854
92F	Franklin Academy	6,468
92G	East Wake Academy	5,778
92K	Raleigh Charter High School	-
92L	Torchlight Academy	5,778
92M	Premfrent Charter School	5,778
92N	Quest Academy	5,778
92P	Southern Wake Academy	-
92Q	Hope Elementary School	5,778
92R	Casa Esperanza	5,778
92S	Endeavor Charter School	5,778
92T	Triangle Math and Science Academy	5,778
93A	Haliwa-Saponi Tribal	7,068
95A	Two Rivers Community	965
96C	Dillard Academy	5,778
97D	Bridges	7,752
98A	Sallie B. Howard School	6,468

<b>Total Allotment</b>		<b>553,501</b>
------------------------	--	----------------

<b>CHARTER, ESDB, &amp; NERSBA on NCREN</b>
<b>1-Dec-12</b>
American Renaissance School
Bear Grass Charter School
Bethel Hill Charter School
Carolina International School
Casa Esperanza Montessori
Charter Day School
Columbus Charter School
Community School of Davidson
Cornerstone Academy
Corvian Community Charter School
Eastern North Carolina School for the Deaf
Evergreen Community Charter School
Exploris Middle
Francine Delany New School for Children
Global Scholars Academy
Governor Morehead School
Hawbridge School
KIPP: Charlotte
Lake Norman Charter School
Lincoln Charter
Magellan Charter School
Mountain Discovery Charter
Mountain Island Charter School
Neuse Charter
North Carolina School for the Deaf
Northeast Regional School of Biotechnology and Agriscience
Piedmont Community Charter School
Pine Lake Preparatory
Quality Education Academy
Raleigh Charter High
Research Triangle High School
River Mill Academy
Socrates Academy
Southern Wake Academy
Success Institute
Sugar Creek Charter
The Central Park School for Children
The Downtown Middle (STEAM Academy)
The Woods Charter
Two Rivers Community
Union Academy
Voyager Academy
Water's Edge Village Charter School
<b>TOTAL - 43</b>



## FY2013 & FY2014 ITS K12 STATE NETWORK ISP SERVICE EXPENSE PROJECTIONS

1-Dec-12

	2012		2012		2012		2012		2012		2012		2012		2013		2013		2013		2013		2013		2013		Totals	
	JUL	AUG	SEP	OCT	NOV	DEC	JAN	FEB	MAR	APR	MAY	JUN	JUL	AUG	SEP	OCT	NOV	DEC	JAN	FEB	MAR	APR	MAY	JUN	FY2013			
<b>FY13</b>																												
Budget	\$ 916,869.25	\$ 916,869.25	\$ 916,869.25	\$ 916,869.25	\$ 916,869.25	\$ 916,869.25	\$ 916,869.25	\$ 916,869.25	\$ 916,869.25	\$ 916,869.25	\$ 916,869.25	\$ 916,869.25	\$ 916,869.25	\$ 916,869.25	\$ 916,869.25	\$ 916,869.25	\$ 916,869.25	\$ 916,869.25	\$ 916,869.25	\$ 916,869.25	\$ 916,869.25	\$ 916,869.25	\$ 916,869.25	\$ 916,869.25	\$ 916,869.25	\$ 916,869.25	\$ 11,002,431.00	NC10022877
Actual	\$ 783,943.00	\$ 812,081.00	\$ 929,616.00	\$ 899,170.58	\$ 901,620.00	\$ 944,046.00	\$ -	\$ -	\$ -	\$ -	\$ -	\$ -	\$ -	\$ -	\$ -	\$ -	\$ -	\$ -	\$ -	\$ -	\$ -	\$ -	\$ -	\$ -	\$ -	\$ -	\$ 230,738.92	(over/under)
Difference	\$ 132,926.25	\$ 104,788.25	\$ 127,246.75	\$ 17,698.67	\$ 15,249.25	\$ (27,176.75)	\$ -	\$ -	\$ -	\$ -	\$ -	\$ -	\$ -	\$ -	\$ -	\$ -	\$ -	\$ -	\$ -	\$ -	\$ -	\$ -	\$ -	\$ -	\$ -	\$ -	\$ -	\$ -
Projected	\$ 783,943.00	\$ 812,081.00	\$ 929,616.00	\$ 899,170.58	\$ 901,620.00	\$ 944,046.00	\$ 987,000.09	\$ 1,031,908.60	\$ 1,078,660.44	\$ 1,127,948.59	\$ 1,179,270.25	\$ 1,232,927.05	\$ 1,308,391.59															
for average mo. growth rate: 4.550% (change to adjust forecast)																												

Minimum Year-end Total: \$ 10,477,466.58 < assumes no additional upgrades or changes for the rest of the fiscal year going forward  
 % of Budgeted amount: 95%

	JUL	AUG	SEP	OCT	NOV	DEC	JAN	FEB	MAR	APR	MAY	JUN	Totals
Invoice	\$ 783,943.00	\$ 812,081.00	\$ 929,616.00	\$ 899,170.58	\$ 901,620.00	\$ 944,046.00	\$ 20,000.00	\$ 20,000.00	\$ 20,000.00	\$ 20,000.00	\$ 20,000.00	\$ 20,000.00	\$ 5,270,476.58
One time	\$ 11,564.00	\$ 19,851.00	\$ 68,693.00	\$ 17,588.58	\$ 10,000.00	\$ 20,000.00	\$ 20,000.00	\$ 20,000.00	\$ 20,000.00	\$ 20,000.00	\$ 20,000.00	\$ 20,000.00	\$ 267,696.58
Recurring	\$ 772,379.00	\$ 792,230.00	\$ 860,923.00	\$ 881,582.00	\$ 891,620.00	\$ 924,046.00	\$ 966,090.09	\$ 1,010,047.19	\$ 1,056,004.34	\$ 1,104,032.54	\$ 1,154,286.93	\$ 1,206,606.98	\$ 11,620,068.07
Total Invoice month-month		4%	14%	-3%									
One time rate month-month		72%	246%	-74%									
Recurring rate month-month		3%	9%	2%									
Average Growth:		4.55%											

One time % 1.48% 2.44% 7.39% 1.96%

### FY14

Recurring	\$ 1,261,716.70	\$ 1,319,124.81	\$ 1,379,144.99	\$ 1,441,896.09	\$ 1,507,502.36	\$ 1,576,093.72	\$ 1,647,805.98	\$ 1,722,781.15	\$ 1,801,167.69	\$ 1,883,120.82	\$ 1,968,802.82	\$ 2,058,383.35	\$ 19,567,540.48
One-time	\$ 30,000.00	\$ 30,000.00	\$ 30,000.00	\$ 30,000.00	\$ 30,000.00	\$ 30,000.00	\$ 40,000.00	\$ 40,000.00	\$ 40,000.00	\$ 40,000.00	\$ 40,000.00	\$ 40,000.00	\$ 420,000.00
Combined	\$ 1,291,716.70	\$ 1,349,124.81	\$ 1,409,144.99	\$ 1,471,896.09	\$ 1,537,502.36	\$ 1,606,093.72	\$ 1,687,805.98	\$ 1,762,781.15	\$ 1,841,167.69	\$ 1,923,120.82	\$ 2,008,802.82	\$ 2,098,383.35	\$ 19,987,540.48

LEA Name	LEA Number	Contracted Bandwidth (Mbps)	Average Daily Membership	Peak Daily 95th Percentile Utilization (Mbps) - Nov 2012	Date of Peak Daily 95th Percentile	District Per-student Utilization (Kbps)											
						Jan-12	Feb-12	Mar-12	Apr-12	May-12	Jun-12	Jul-12	Aug-12	Sep-12	Oct-12	Nov-12	
Alamance-Burlington School System	10	250	22217	239.96	11/20/12	7.51	7.84	11.15	8.62	9.36	8.70	2.01	5.02	7.81	9.15	10.80	
Alexander County Schools	20	100	100	98.82	11/20/12	13.79	12.16	12.16	15.50	14.76	13.71	2.04	9.45	15.11	17.35	18.66	
Allegheny County Schools	30	100	1385	78.89	11/15/12	36.31	62.94	65.06	46.40	44.99	9.28	7.20	33.57	44.90	46.30	56.96	
Anson County Schools	40	250	3634	88.60	11/6/12	17.46	20.01	21.80	18.03	18.89	18.16	9.52	21.03	27.27	24.46	24.88	
Ashe County Schools	50	100	3191	94.19	11/19/12	28.87	29.47	27.54	27.80	31.41	12.76	6.30	37.49	26.88	29.81	29.52	
Ashboro City Schools	761	250	4690	207.39	11/19/12	50.43	40.03	46.23	39.63	42.10	51.36	4.91	37.46	42.32	49.27	44.22	
Ashville City Schools	111	100	4121	93.93	11/2/12	17.06	15.84	17.83	18.64	19.05	16.42	3.38	18.41	20.91	20.96	22.79	
Avery County Schools	60	250	2133	158.35	11/19/12	38.70	41.98	59.67	51.08	55.30	16.59	21.26	48.71	62.29	56.54	74.24	
Beaufort County Schools	70	100	6991	86.65	11/21/12	9.42	9.05	11.95	9.83	11.52	12.68	1.41	6.76	9.66	12.10	12.39	
Bertie County Schools	80	100	2634	91.15	11/14/12	22.58	21.88	25.67	24.64	35.40	32.68	11.27	17.31	25.86	27.44	34.60	
Bladen County Schools	90	250	4950	110.89	11/9/12	19.94	19.84	20.15	21.69	20.50	20.60	3.18	13.18	18.03	20.16	22.40	
Brunswick County Schools	100	250	12228	120.16	11/30/12	6.62	6.38	8.33	6.61	8.11	8.17	1.88	3.84	8.15	8.07	9.83	
Burcombe County Schools	110	500	25547	306.34	11/20/12	6.21	5.25	7.90	7.38	10.54	7.22	2.41	6.23	8.11	9.27	12.07	
Burke County Public Schools	130	250	12868	210.00	11/15/12	8.17	8.19	10.84	8.32	13.84	16.63	5.75	7.21	13.04	17.34	16.32	
Cabarrus County Schools	130	500	29792	468.12	11/2/12	11.40	9.54	12.33	16.07	14.14	16.53	2.68	7.18	11.10	12.52	15.71	
Caldwell County Schools	140	250	12351	193.83	11/9/12	9.45	11.02	12.34	12.23	18.88	12.39	2.70	9.73	14.25	12.99	15.69	
Canden County School System	150	100	1913	77.87	11/20/12	17.18	15.98	18.33	17.45	17.46	19.67	4.05	20.05	45.48	36.96	40.71	
Carteret County Public School System	160	100	8495	1.20	11/1/12	0.87	0.75	0.35	0.34	0.30	0.23	0.24	0.09	0.05	0.08	0.14	
Caswell County Schools	170	100	2797	57.42	11/2/12	17.86	12.51	13.92	14.25	16.66	13.24	3.05	12.82	19.45	20.36	20.53	
Catawba County Schools	180	500	16969	753.73	11/8/12	10.36	10.53	10.32	10.53	11.92	11.80	3.44	18.05	37.91	43.74	44.54	
Chapel Hill-Carrboro City Schools	681	1000	12088	346.66	11/16/12	23.51	26.13	37.58	25.66	28.51	25.62	7.87	15.76	27.88	27.68	28.68	
Charlotte-Mecklenburg Schools	600	1000	140028	467.20	11/20/12	2.86	2.29	2.59	3.19	4.50	5.79	1.10	1.49	3.20	2.98	3.34	
Chatham County Schools	190	250	8100	194.50	11/16/12	20.96	17.00	27.25	28.82	23.60	13.91	7.69	12.83	24.75	22.11	24.01	
Cherokee County School District	200	100	3360	77.23	11/20/12	15.80	30.23	22.10	17.42	25.75	20.32	16.53	19.61	20.80	22.35	22.99	
Clay County Schools	220	100	1314	54.37	11/28/12	8.67	11.07	11.89	12.42	11.30	1.55	11.54	23.10	31.97	32.81	41.88	
Cleveland County Schools	230	250	15413	218.99	11/20/12	9.84	10.38	11.68	12.85	12.70	15.41	2.69	7.02	12.72	13.66	14.21	
Clinton City Schools	821	100	2984	51.70	11/30/12	22.06	17.43	16.86	15.11	19.20	22.58	3.94	9.34	20.17	21.30	17.33	
Columbus County Schools	240	100	6292	86.91	11/20/12	14.21	12.73	13.12	15.88	13.46	13.76	3.07	10.68	13.15	12.06	13.81	
Craven County Schools	250	250	14614	166.51	11/15/12	8.49	5.07	6.17	6.59	6.99	4.15	1.96	4.33	7.92	6.92	11.39	
Cumberland County Schools	260	2000	51144	1087.20	11/20/12	11.45	11.19	11.48	12.69	12.36	11.67	2.68	7.43	12.29	20.36	21.26	
Currituck County Schools	270	100	3830	81.83	11/16/12	11.73	12.24	17.04	16.66	13.24	11.56	4.78	7.43	15.78	19.09	21.37	
Dare County Schools	280	100	4911	80.42	11/8/12	22.10	13.43	14.51	19.68	14.20	12.03	8.09	7.95	15.19	15.88	16.38	
Davidson County Schools	290	250	20051	220.15	11/15/12	4.84	7.27	7.46	8.41	10.48	6.04	1.73	7.00	10.43	10.96	10.86	
Davie County Schools	300	100	6464	107.61	11/16/12	10.43	9.42	10.99	10.21	9.75	10.74	2.37	8.97	16.04	9.77	16.65	
Duplin County Schools	310	250	9349	146.52	11/1/12	15.13	13.06	15.44	13.76	17.51	17.15	4.18	10.09	14.28	15.65	15.67	
Durham Public Schools	320	500	32084	457.36	11/29/12	8.33	8.52	8.66	12.21	14.74	12.02	3.17	7.46	11.52	12.55	14.26	
Edenton-Chowan Schools	210	100	2233	86.71	11/2/12	32.12	29.42	29.90	31.76	38.58	42.54	6.39	19.38	29.65	38.57	38.83	
Edgecombe County Public Schools	330	250	6661	220.25	11/29/12	14.75	13.72	14.37	14.44	15.54	15.22	4.29	9.23	22.70	29.95	33.06	
Elizabeth City - Pasquotank Schools	700	100	5748	81.07	11/9/12	11.89	8.35	11.10	12.48	16.71	13.04	2.25	7.64	11.88	12.22	14.10	
Elkin City Schools	861	100	1204	46.18	11/13/12	27.47	29.79	38.71	39.01	71.20	8.15	30.56	39.25	44.69	54.60	38.36	
Franklin County Schools	350	100	8580	70.08	11/13/12	10.77	12.05	8.07	8.03	6.73	6.79	2.77	7.93	5.69	8.10	8.17	
Gaston County Schools	360	500	31059	326.51	11/16/12	7.99	8.28	8.22	8.32	10.10	10.93	1.56	5.38	8.06	9.73	11.74	
Gates County Public Schools	370	100	1726	63.03	11/28/12	40.54	36.14	31.58	27.13	44.32	29.49	23.50	37.78	55.66	54.23	36.52	
Graham County Schools	380	100	1197	45.71	11/16/12	77.22	31.93	49.00	35.62	46.03	46.32	8.85	27.23	41.22	34.32	38.19	
Graham County Schools	390	500	8471	328.80	11/9/12	28.53	23.76	28.75	30.54	32.43	35.69	7.14	20.95	35.96	36.45	38.82	
Greene County Schools	400	100	3170	83.22	11/30/12	20.09	18.95	19.47	19.31	19.22	16.89	12.69	19.47	27.95	25.34	26.25	
Guilford County Schools	410	1000	71817	717.65	11/9/12	1.63	1.60	1.79	1.60	1.79	1.78	0.26	5.49	9.18	10.06	9.99	
Halifax County Schools	420	250	3391	106.49	11/7/12	24.94	22.08	25.41	27.32	27.63	27.94	5.12	19.17	27.95	30.62	31.99	
Harnett County Schools	430	500	20263	285.29	11/21/12	0.55	4.50	4.87	4.71	5.21	4.52	1.58	5.61	11.03	11.51	14.08	





						Jan-12	Feb-12	Mar-12	Apr-12	May-12	Jun-12	Jul-12	Aug-12	Sep-12	Oct-12	Nov-12
Union County Public Schools	900	1000	40330	499,004	11/8/12	7.00	7.50	9.90	13.13	10.94	8.89	1.84	7.31	14.57	15.17	12.87
Vance County Public Schools	910	250	6732	152,516	11/20/12	0.51	0.24	0.27	0.27	0.82	0.26	4.23	9.63	15.56	19.22	22.66
Wake County Public School System	930	2000	148019	1,436,270	11/9/12	10.18	11.75	9.48	9.27	8.70	8.43	3.29	5.96	12.50	12.40	9.70
Warren County Schools	930	100	2352	79,85	11/16/12	22.14	23.59	23.95	25.06	37.24	27.85	11.43	20.85	29.47	30.94	33.95
Washington County Schools	940	100	1685	64,05	11/15/12	20.62	21.52	19.12	23.84	25.86	24.25	6.29	21.08	35.36	39.27	38.01
Watauga County Schools	950	250	4437	156,78	11/16/12	26.21	28.28	32.51	45.77	48.20	11.37	3.46	24.75	40.87	33.16	35.33
Wayne County Public Schools	960	250	19073	185,89	11/19/12	8.69	6.14	7.86	8.40	10.37	9.55	1.14	4.80	7.66	9.17	9.75
Weldon City Schools	422	100	967	46,22	11/21/12	35.45	41.29	38.72	47.74	42.90	43.38	21.75	37.96	34.00	35.57	47.80
Whiteville City Schools	241	250	2281	99,01	11/7/12	43.58	43.57	46.51	41.09	41.01	42.93	15.35	62.77	30.21	40.38	43.41
Wilkes County School District	970	250	9836	176,98	11/30/12	12.05	13.86	16.26	18.31	16.59	1.75	2.49	10.91	14.70	40.99	17.99
Winston-Salem Forsyth County Schools	980	500	12353	296,34	11/29/12	6.88	6.93	7.93	8.27	8.45	7.93	3.19	7.26	8.79	22.63	23.99
Yadkin County Schools	340	1000	52879	492,57	11/2/12	5.11	4.86	6.92	6.36	8.83	10.02	1.73	3.96	7.43	9.15	9.32
Yancey County Schools	995	100	2276	52,04	11/20/12	15.52	18.71	18.29	20.12	22.19	5.43	4.42	16.15	29.12	36.70	22.87
<b>STRAIGHT LINE AVERAGE:</b>						<b>17.05</b>	<b>16.60</b>	<b>17.98</b>	<b>18.74</b>	<b>20.81</b>	<b>16.18</b>	<b>6.82</b>	<b>15.12</b>	<b>21.14</b>	<b>23.26</b>	<b>25.06</b>

LEA Name	LEA Number	Contracted Bandwidth (Mbps)	Average Daily Membership	Peak Daily 95th Percentile Utilization (Mbps) - Nov 2012	Date of Peak Daily 95th Percentile	Charter Per-student Utilization (kbps)											
						Jan-12	Feb-12	Mar-12	Apr-12	May-12	Jun-12	Jul-12	Aug-12	Sep-12	Oct-12	Nov-12	
American Renaissance School	498	10	524	10.70	11/2/12	20.42	20.45	18.82	20.20	19.90	19.96	19.67	20.06	20.67	20.22	20.41	
Bear Grass Charter School	588	10	256	19.94	11/4/12	No data	No data	No data	No data	No data	No data	No data	No data	unknown	79.90	77.91	
Bethel Hill Charter School	73A	10	377	8.32	11/5/12	9.73	10.76	15.02	17.45	18.89	8.91	4.50	23.08	30.47	18.73	22.07	
Carolina International School	13A	20	553	22.84	11/6/12	No data	No data	No data	12.72	19.56	18.28	0.50	2.02	22.68	30.04	41.31	
Gesa Esperanza Montessori Charter	92R	10	388	6.87	11/5/12	No data	15.92	16.30	15.90	12.94	15.67	7.66	39.51	18.15	17.93		
Central Park School for Children	32K	10	299	10.49	11/28/12	21.42	16.15	16.30	35.11	38.84	12.74	37.01	39.51	40.35	35.38	35.07	
Charter Day School	10A	10	924	23.18	11/6/12	24.54	44.20	18.22	33.34	54.59	20.77	14.09	23.18	29.13	26.55	25.05	
Colinus Charter School	24N	10	735	10.39	11/2/12	No data	No data	No data	No data	No data	No data	No data	8.16	19.56	18.82	14.14	
Community School of Davidson	60I	20	1189	33.88	11/7/12	18.55	24.88	20.18	23.52	21.86	16.99	6.35	29.18	33.44	22.19	28.45	
Corneison Charter Academy School	41G	10	500	4.02	11/5/12	No data	No data	No data	No data	No data	No data	No data	No data	No data	No data	8.05	
Corvan Community School	60M	10	88	0.01	11/5/12	No data	No data	No data	No data	No data	No data	No data	No data	No data	No data	0.16	
Eastern North Carolina School for the Deaf	unknown	20	unknown	12.46	11/29/12	unknown	unknown	unknown	unknown	unknown	unknown	unknown	unknown	unknown	unknown	unknown	
Evergreen Community Charter School	11A	10	408	14.14	11/28/12	31.08	34.76	49.34	54.49	36.67	10.38	11.48	27.88	58.74	82.85	34.65	
Explores Middle School Charter	928	10	203	9.24	11/6/12	No data	No data	No data	No data	No data	No data	No data	No data	No data	No data	45.52	
Frankie Delany New School for Children	11K	10	163	10.74	11/8/12	17.15	14.90	110.07	23.22	40.00	11.85	14.34	13.73	29.28	41.14	65.91	
Global Scholars Academy	32M	10	128	10.28	11/7/12	No data	No data	No data	No data	No data	No data	No data	17.15	100.64	79.65	80.28	
Governor Morehead School	unknown	20	unknown	24.98	11/5/12	unknown	unknown	unknown	unknown	unknown	unknown	unknown	unknown	unknown	unknown	unknown	
Hardidge School	01D	10	177	12.55	11/27/12	118.71	76.38	134.43	73.59	133.14	28.81	3.65	37.85	225.05	76.06	70.90	
KIPP Charlotte	60L	10	336	6.88	11/28/12	No data	No data	19.98	113.65	35.45	36.76	28.54	29.94	28.54	20.47	20.47	
Lake Norman Charter School	60D	20	1592	22.00	11/29/12	13.48	10.34	16.58	14.22	16.39	5.42	2.81	8.22	15.48	14.57	13.82	
Lincoln Charter School	55A	10	1542	34.49	11/26/12	20.13	18.24	22.82	20.48	15.13	3.66	8.25	17.00	21.99	20.28	22.37	
Maggellan Charter School	92D	10	401	12.36	11/4/12	10.30	15.22	14.34	26.80	49.24	17.22	6.06	17.23	33.65	25.88	30.82	
Mountain Discovery Charter School	87A	10	174	5.25	11/5/12	83.44	49.01	46.64	52.56	40.77	14.66	8.85	25.95	21.01	36.63	30.22	
Mountain Island Charter School	36C	10	813	15.45	11/15/12	12.73	17.59	13.43	13.32	15.63	16.77	5.15	17.27	23.46	14.72	19.01	
Neuse Charter School	51A	20	626	30.06	11/2/12	28.26	32.80	40.71	64.47	40.26	39.32	9.92	38.37	44.02	46.32	48.01	
North Carolina School for the Deaf	unknown	20	unknown	12.26	11/15/12	unknown	unknown	unknown	unknown	unknown	unknown	unknown	unknown	unknown	unknown	unknown	
Piedmont Community Charter School	368	20	1203	24.78	11/29/12	8.92	9.53	10.13	9.42	9.90	10.38	8.16	7.36	10.85	20.25	20.60	
Quality Education Academy	34B	10	406	30.38	11/19/12	No data	No data	No data	No data	No data	No data	No data	No data	No data	0.02	74.83	
Pine Lake Preparatory	49E	20	1598	12.50	11/1/12	7.62	7.94	8.63	9.02	8.42	4.53	1.66	5.28	8.57	8.26	7.83	
Raleigh Charter High School	92K	10	540	9.46	11/28/12	56.64	26.15	30.36	25.58	24.08	4.55	18.23	24.55	59.07	31.60	17.51	
Research Triangle High School	32N	50	149	30.66	11/27/12	No data	No data	No data	No data	No data	No data	No data	No data	29.23	96.36	202.95	
River Mill Academy	01B	10	595	20.98	11/21/12	17.94	18.36	17.70	19.66	19.52	18.60	18.96	19.92	18.87	19.76	35.27	
Socrates Academy	60J	10	606	10.85	11/2/12	No data	No data	No data	No data	10.54	11.90	16.01	17.25	18.20	15.22	17.90	
Southern Wake Academy	92P	10	179	10.00	11/5/12	82.86	84.09	44.04	47.84	79.15	47.48	14.95	46.59	79.76	55.87		
Success Institute Charter School	49D	10	102	5.38	11/2/12	No data	No data	No data	No data	No data	No data	0.02	0.05	0.04	26.55	52.71	
Sugar Creek Charter School	608	10	875	0.00	11/28/12	No data	No data	No data	No data	No data	No data	No data	No data	No data	No data	0.00	
The STEAM Academy of Winston-Salem	34C	10	102	12.24	11/16/12	25.66	26.46	47.96	61.67	76.39	76.57	4.82	31.14	55.88	53.10	119.99	
Two Rivers Community School	95A	10	177	4.29	11/20/12	No data	No data	No data	No data	No data	No data	0.04	30.91	60.79	32.21	24.25	
Union Academy	90A	20	1209	22.47	11/14/12	16.44	18.62	16.45	16.48	19.18	14.82	7.29	20.37	16.75	18.06	18.59	
Voyager Academy	32L	100	1253	30.28	11/20/12	26.60	27.86	27.83	27.99	26.34	27.05	6.46	17.25	20.20	23.15	24.16	
Water's Edge Village School	27A	10	15	0.60	11/29/12	No data	No data	No data	No data	No data	No data	No data	No data	No data	No data	40.10	
Woods Charter School	19B	10	501	28.90	11/16/12	31.80	40.85	35.57	42.27	47.43	43.69	14.68	23.64	206.15	82.90	57.68	

## North Carolina E-Rate Program Funding History

10-Dec-12

Year	Total Requests	Requested Amount	Committed Amount	Pending Amount	Disbursed Amount	Rejected Amount**	Utilization %
2012	1,929	\$124,095,123.72	\$56,724,676.12	\$35,663,148.82	\$7,826,740.84	\$31,707,298.78	14%
2011	2,022	\$112,874,257.27	\$77,188,511.84	\$6,273,247.66	\$55,551,440.57	\$29,412,497.77	72%
2010	1,973	\$96,492,709.32	\$98,533,025.08	\$0.00	\$70,471,416.80	\$7,959,684.24	80%
2009	1,830	\$84,383,889.89	\$70,314,885.70	\$0.00	\$56,624,082.83	\$14,069,004.19	81%
2008	1,892	\$78,539,107.48	\$63,448,062.17	\$0.00	\$55,773,845.08	\$15,091,045.31	88%
2007	2,408	\$85,108,251.38	\$63,989,103.02	\$63,276.67	\$54,432,858.83	\$21,055,871.69	85%
2006	2,080	\$92,866,227.79	\$52,517,221.58	\$73,640.00	\$43,889,744.61	\$40,275,366.21	84%
2005	3,084	\$81,583,067.13	\$58,167,902.95	\$98,810.42	\$49,453,095.51	\$23,316,353.76	85%
2004	3,111	\$67,164,040.16	\$43,093,776.64	\$0.00	\$34,790,050.34	\$24,070,263.52	81%
2003	2,970	\$88,494,407.93	\$51,169,282.30	\$0.00	\$41,172,324.82	\$37,325,125.63	80%
2002	2,820	\$75,279,755.15	\$53,689,800.26	\$36,296.60	\$43,506,745.60	\$21,553,658.29	81%
2001	3,205	\$53,220,062.96	\$25,464,776.12	\$0.00	\$19,999,779.37	\$27,755,286.84	79%
2000	3,722	\$66,087,851.04	\$26,878,668.75	\$0.00	\$23,509,082.31	\$39,208,982.29	87%
1999	2,518	\$44,734,121.86	\$37,921,653.91	\$273.04	\$30,197,180.31	\$6,812,194.91	80%
1998	4,036	\$35,442,188.74	\$26,857,934.95	\$0.00	\$21,194,807.30	\$8,584,253.79	79%
	<b>39,600</b>	<b>\$1,186,365,061.82</b>	<b>\$795,959,481.39</b>	<b>\$42,208,693.21</b>	<b>\$608,393,195.12</b>	<b>\$348,196,887.22</b>	



**Source: E-rate Manager**  
 E-RATE MANAGER is a registered trademark of Funds For Learning, LLC  
 Data generated on Monday, December 10th, 2012 at 06:56 AM CST

\* A significant portion of the money in this column is rejected due to Priority 2 funding threshold; e.g., in 2011, any applicants at or below 87% discount were denied Priority 2 due to lack of available funds. Current funding year, 2012, the Priority 2 threshold was set at 90%; applicants at or below 89% have already received denial letters. Priority 2 funding may have to be pro-rated at the 90% level next year, 2013.



# READY Anywhere!

*“Moreover, thanks to the proliferation of low-cost laptops, tablets, eReaders, and smartphones – and the rise of state and district high-access and 1-to-1 programs – teaching and learning is no longer limited to the confines of a school building or a school day. In fact, out-of-school access to broadband by students and teachers is now arguably as important to the overall quality of the student learning experience as access at school.”*

– State Education Technology Director’s Association (SETDA) Broadband Imperative Report 2012

The READY Anywhere! initiative is a collaborative effort of interested Local Education Agencies (LEAs) and charters, the North Carolina Department of Public Instruction, and NC Broadband, a division of the North Carolina Department of Commerce. The goal of the initiative is to strive for sustainable 24/7 access to an Internet connected mobile device for all students attending North Carolina public schools regardless of their geographic location or economic status.

From all areas of the state the message is clear: the implementation of the North Carolina School Connectivity Initiative has brought robust, scalable and reliable connectivity to public schools. North Carolina is a national leader in school connectivity. Robust connectivity at the school is ubiquitous in the delivery of educational content, the delivery of benchmark and summative assessments, and for tracking progress against a personalized education plan. Yet due to a combination of factors (such as income level, access to devices, availability and uptake), too many students in North Carolina lack access to the Internet after school hours when this resource is critically needed to further their competitiveness. Connectivity that goes with the student into the home is absolutely necessary for students to graduate college and career ready.

## Get READY!

North Carolina has a demonstrated history of commitment to education and to broadband access. Broadband service providers continue to invest in upgrades to infrastructure and have a history of working with the state to look at how to serve citizens and increase deployment. Morphing of the federal E-Rate program could offer new opportunities for cost savings in providing mobile connectivity to students across the state. And, North Carolina now has additional strategic assets through increased middle mile infrastructure that can help service providers deliver robust connectivity to more students and homes. In fact, these new fiber assets have the potential to help mobile service providers increase the capacity of their North Carolina mobile infrastructure and possibly make it scalable to meet the needs of hundreds of thousands of K12 students. Now is the time for North Carolina to leverage these many resources and lead in access.

Key to the success of this initiative are LEA and charter leaders – Superintendents, Chief Academic Officers, Chief Technology Officers, Chief Finance Officers – committed to providing students equitable access to a monthly bundled Internet service, including a student mobile device (1-to-1) with a four-year (minimum acceptable) refresh cycle, contingent upon meeting certain price parameters.



READY Anywhere! addresses the following educational issues: 24/7 access, device refresh, technical support, equity, filtering, and cost certainty (via one low monthly per student cost).

Introductory details...

- Cooperative and collaborative, borne of the School Connectivity Initiative
- NC Broadband mapping work, showing coverage
- Aggregate demand for ubiquitous student connectivity in willing LEAs and charters (Aggregated demand involves buying service as a collaborative purchasing group)
- Craft a working group of district and charter school leaders
- Address authentication, filtering, wi-fi to 3G/4G transition, and other technical issues
- Address how volume purchasing from carriers would work
- Address e-Rate eligibility, including cost allocation for at home use
- Coalesce around standard offerings
- Trial state for 4G and new technologies (e.g. Whitespace)
- Home to demand aggregator and speed testing
- Work to develop parameters for a Request for Information/Request for Proposal process leading to a convenience contract
- LEA and charter commitments to pilot and procure services



*"In North Carolina, 38 percent of households with annual incomes of less than \$25,000 report not having a computer or Internet access in their homes, and 31 percent report that they don't use the Internet anywhere. Top reasons cited for lack of computers and home Internet include lack of need, lack of usefulness and cost (2011 Citizen Survey, NC Broadband). Increasing broadband adoption rates will require a concerted effort to address multiple factors including digital literacy and the relevancy gap."*

– NC Broadband

*"Outside of school, home broadband adoption rates have all but stalled since 2009, leveling off at roughly 65%."*

– SETDA Broadband Imperative Report 2012



To learn more about progress towards READY Anywhere! or to indicate your willingness to participate contact:  
**Barry Pace**, NCDPI Connectivity Services | [barry.pace@dpi.nc.gov](mailto:barry.pace@dpi.nc.gov) | 828-460-1937