



Public Schools of North Carolina
State Board of Education
Department of Public Instruction

Report to the North Carolina General Assembly

School Connectivity Initiative

SL 2007-323 (HB 1473), SECTION 7.28.(d)

Date Due: January 15, 2016

Report # 43

DPI Chronological Schedule, 2015-2016

STATE BOARD OF EDUCATION

SBE VISION: Every public school student will graduate ready for post-secondary education and work, prepared to be a globally engaged and productive citizen.

SBE MISSION: The State Board of Education has the constitutional authority to lead and uphold the system of public education in North Carolina.

WILLIAM COBEY

Chair :: Chapel Hill

BECKY TAYLOR

Greenville

WAYNE MCDEVITT

Asheville

A.L. COLLINS

Vice Chair :: Kernersville

REGINALD KENAN

Rose Hill

ERIC DAVIS

Charlotte

DAN FOREST

Lieutenant Governor :: Raleigh

KEVIN D. HOWELL

Raleigh

PATRICIA N. WILLOUGHBY

Raleigh

JANET COWELL

State Treasurer :: Raleigh

GREG ALCORN

Salisbury

JUNE ST. CLAIR ATKINSON

Secretary to the Board :: Raleigh

OLIVIA OXENDINE

Lumberton

NC DEPARTMENT OF PUBLIC INSTRUCTION

June St. Clair Atkinson, Ed.D., State Superintendent

301 N. Wilmington Street :: Raleigh, North Carolina 27601-2825

In compliance with federal law, the NC Department of Public Instruction administers all state-operated educational programs, employment activities and admissions without discrimination because of race, religion, national or ethnic origin, color, age, military service, disability, or gender, except where exemption is appropriate and allowed by law.

Inquiries or complaints regarding discrimination issues should be directed to:

Dr. Rebecca Garland, Deputy State Superintendent

6368 Mail Service Center, Raleigh, NC 27699-6368 :: Telephone: (919) 807-3200 :: Fax: (919) 807-3388

Visit us on the Web :: www.ncpublicschools.org

M0415

SCHOOL CONNECTIVITY INITIATIVE

Legislative Update

Submitted to:

Joint Legislative Oversight Committee on Information Technology
Joint Legislative Education Oversight Committee
Office of State Budget and Management
State Information Technology Officer
Fiscal Research Division

Prepared by

Connectivity and E-rate Services Section
Technology Services Area
North Carolina Department of Public Instruction

FORWARD

The School Connectivity Initiative (SCI) was created by *Session Law 2007-323 SECTION 7.28.(d)* as follows:

SECTION 7.28.(b) As recommended in the Joint Report on Information Technology, February 2007, the State Board of Education shall contract with an entity that has the capacity of serving as the administrator of the School Connectivity Initiative and has demonstrated success in providing network services to education institutions in the State. The funds appropriated in this act shall be used to implement a plan approved by the State Board of Education to enhance the technology infrastructure for public schools that supports teaching and learning in the classrooms. The plan shall include the following components:

- (1) A business plan with timelines, clearly defined outcomes and an operational model including a governance structure, personnel, E-rate reimbursement, support services to LEA's and schools and budget;*
- (2) Assurances for a fair and open bidding and contracting process;*
- (3) Technology assessment site survey template;*
- (4) Documentation of how the technology will be used to enhance teaching in learning;*
- (5) Documentation of how existing State-invested funds for technology are maximized to implement the school connectivity initiative;*
- (6) The number, location and schedule of sites to be served in 2007-2008 and in 2008-2009; and*
- (7) Assurances that local school administrative units will upgrade internal networks in schools, provide technology tools, and support for teachers and students to use technology to improve teaching and learning.*

The NC State Board of Education approved the School Connectivity Initiative *Implementation and Operating Plan* on Thursday, August 2, 2007. The SCI program was managed through the NC ITS Enterprise Project Management Office supervising projects that gained initial EPMO approval in September 2007. Within the *Implementation and Operating Plan* were the following deliverables, all of which were completed in 2009:

- All 115 Local Education Agencies (LEAs) connected to MCNC's North Carolina Research and Education Network (NCREN)
- Establishment of Client Network Engineering Services for LEAs
- Establishment of E-rate Filing Assistance Bureau
- Development of a Technology Master Plan
- Development of Governance and Funding Plans

Each year since the inception of the SCI program, the State Board of Education and the Department of Public Instruction presents a School Connectivity Initiative Report reviewing progress towards the objectives of the past calendar year, establish goals for the next year, and to highlight needs and risks.

This report covers **financial activities for fiscal year 2015 (FY2015)** beginning July 1, 2014 through June 30, 2015, and presents **operational activities over the calendar year 2015 (CY2015)** beginning January 1, 2015 through December 31, 2015.

EXECUTIVE SUMMARY

The School Connectivity Initiative (SCI) continues to deliver high quality Internet access, client network engineering services, E-rate support and funding that benefit all NC public schools. Additionally, in 2015, the SCI expanded school support to include the procurement of wireless equipment and related internal network infrastructure and services. Major calendar year 2015 SCI accomplishments include:

- Managed a wireless infrastructure and services procurement that established a dozen statewide contracts and supported over \$42M in purchases;
- Engaged with the FCC, providing feedback on process and tools, and to obtain timely funding commitments;
- Developed budget models and planning criteria for proposed school connectivity expansion;
- Upgraded Internet access to 56 LEAs and 63 charter schools – adding over 35Gbps of aggregate Internet capacity;
- Connected 14 new charter schools to the NC Research and Education Network (NCREN);
- Provided firewall services to 71 LEAs and 74 Charter Schools;
- Provided ZScaler internet filtering services to 78 LEAs and 70 Charter Schools
- Supported 71 LEAs and 34 charter schools with client network engineering (CNE) support services, through 165 total CNE engagements (112 LEA and 53 Charter School);
- Continued emphasis on LEA and charter school technology staff professional development, conducting multiple training events on topics including Apple Seminar, Active Directory Management, Operations and Troubleshooting, PowerShell Training, Summer Networking Institute for Educational Technicians including network administration, security, operations, and Google administration, and conducted regional general meetings for Technology Directors.

Wireless Infrastructure and services procurement

In January 2015, NCDPI released an RFP for the procurement of wireless equipment, network switching equipment, installation, configuration, and related managed services. In early March of 2015, in cooperation with NC DIT, NCDPI signed twelve contracts that established statewide pricing and terms and conditions across myriad equipment manufacturers, installers, integrators, and service providers. Sixty-one LEAs procured equipment and services against the newly established contracts, filing E-rate paperwork in early April. Working closely with the FCC and the Universal Services Administration Corporation (USAC), NC LEAs received E-rate funding commitments for virtually all requests before August 2015. Installation and configuration began for most on or about July 1 and will continue through spring 2016.

School Connectivity Expansion

The SCI team developed budget models to quantify a request to expand State school connectivity funding in support of wired and wireless connectivity inside NC public schools. Those budget models led to a request for \$12M in recurring funding. Session Law 2015-241 includes SCI expansion funds of \$2M for FY2015-16 and \$12M (recurring) for FY2016-17. The core of the funding request was based on sustainably upgrading 20% of NC school internal infrastructure each year while leveraging E-rate support. The 2015 wireless infrastructure procurement validated the budget model and provided valuable data that informs the development of process and procedures for managing expanded connectivity services moving forward.

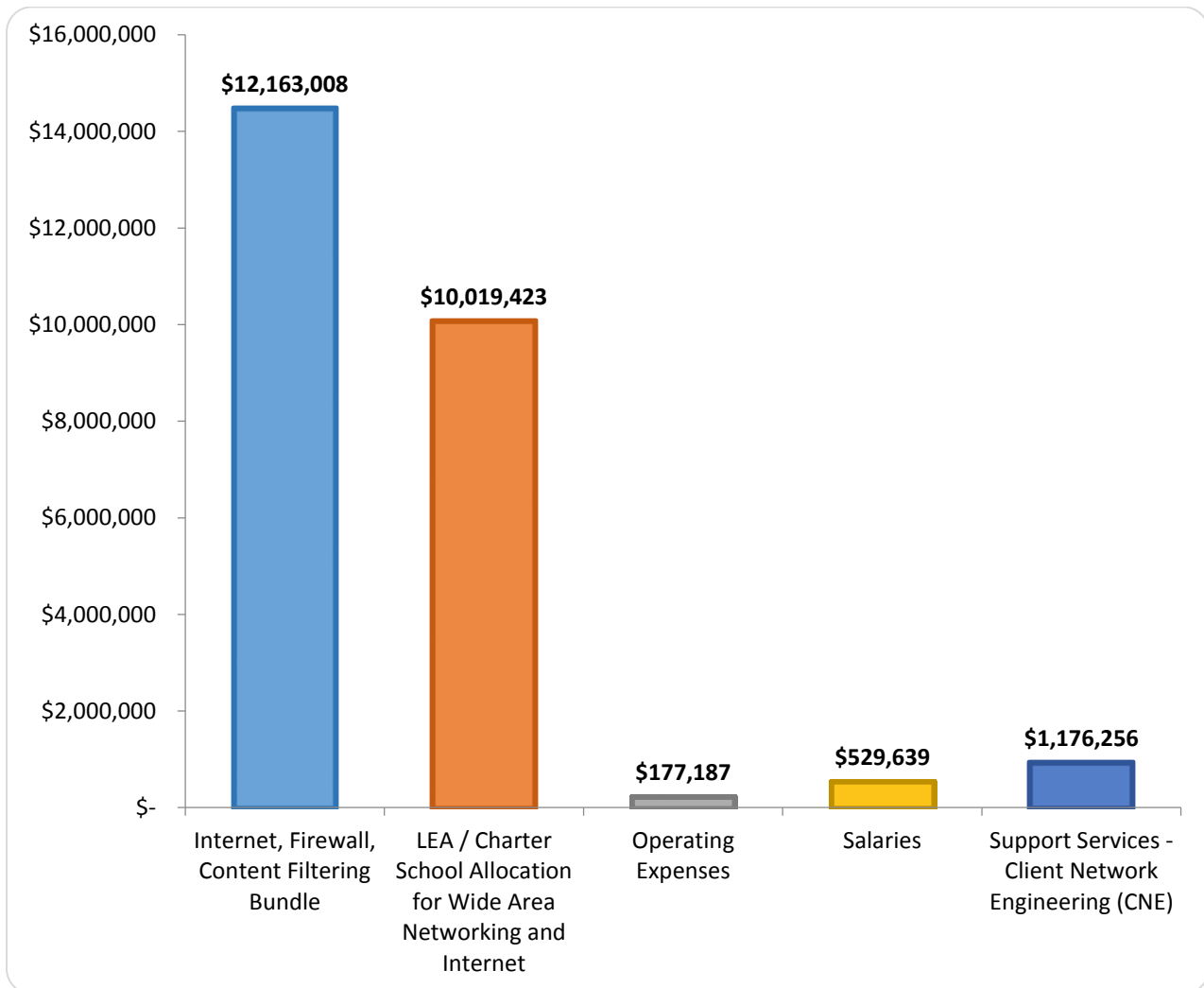
PERFORMANCE OVERVIEW

Financial Summary

The School Connectivity Initiative is supported with legislative funding of \$19.9M and receipts from trailing E-rate rebates totaling \$11.2M during FY2015. FY2015 expenses totaled \$24.9M. Expenses fall into five categories as follows:

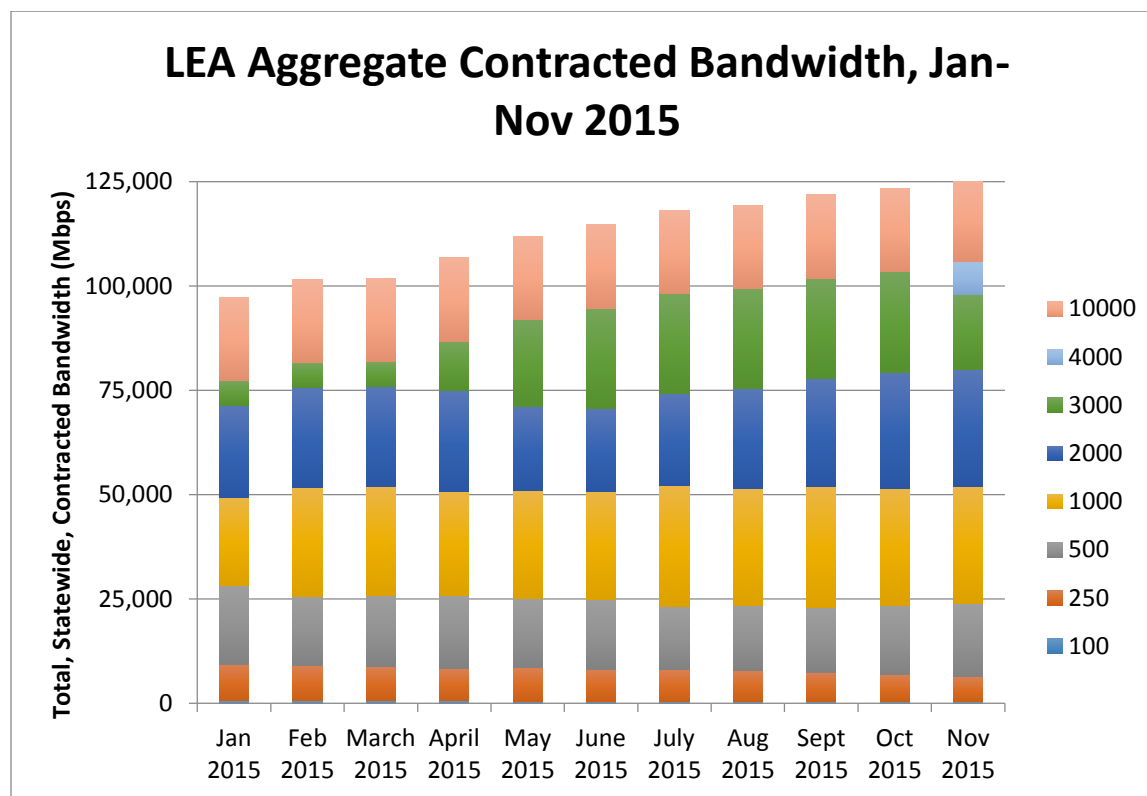
1. Internet, Firewall, and Content Filtering Bundle – These services are procured centrally from NC DIT. MCNC, under contract to NC DIT, manages transport connections from districts and charter schools to the NCREN backbone; provides Internet access; and provides a managed content filtering solution. NC DIT serves as the provider of a managed firewall service. The new Internet services contract reset prices slightly lower effective July 2015.
2. LEA/Charter School Allocation for Wide Area Networking and Internet – Allocations to districts and charter schools based on the after E-rate expenses for school network connections and local Internet connections. NCDPI calculates allocations based on actual contracts and invoices and delivers funding via PRC 073. Since the inception of the SCI, funding totals have remained in the \$9.5M to \$10M range – even with substantial upgrades to school connections’ bandwidth and other services each year.
3. Operating expenses – Include E-rate consulting fees, statewide “Funds for Learning” E-rate Manager access, tools, equipment, and travel for NCDPI staff.
4. Salaries – NCDPI school connectivity team staff salaries. Expenses here support seven NCDPI staff positions. SCI legislation allows for up to eight FTE supported by up to \$1M in annual funding. FY2015 salary expense was \$519,423.
5. Support Services Client Network Engineering (CNE) – CNE services are provided by MCNC under contract to NCDPI. LEAs and charter schools engage MCNC for high level troubleshooting, network design consultation, and related training services. MCNC bills quarterly for actual hours serving districts and charter schools. The CNE contract allows for up to \$1.2M in billings per fiscal year. FY2015 expense was \$1,176,226. The CNE contract expires in June of 2016.

The chart below presents the SCI expenses by category for FY2015.



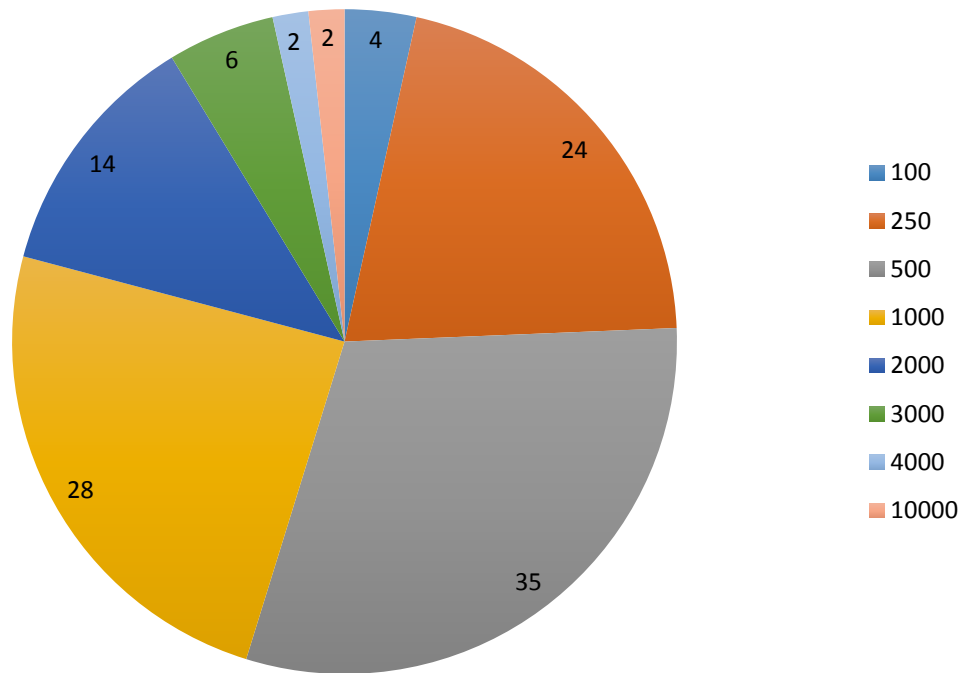
Capacity and Usage Summary

The Internet, firewall, and content filtering bundle continues to grow as districts add more devices, allow students to bring their own devices, and employ more online resources for instruction. MCNC bills the State for Internet Bandwidth each month based on a contracted bandwidth level for each district and charter school. There are eight bandwidth levels ranging from 100Mbps to 10,000Mbps (i.e., 10Gbps). As LEAs and charter schools exceed 60% usage measured against the bandwidth service level, the SCI team initiates upgrades to the next highest service level.

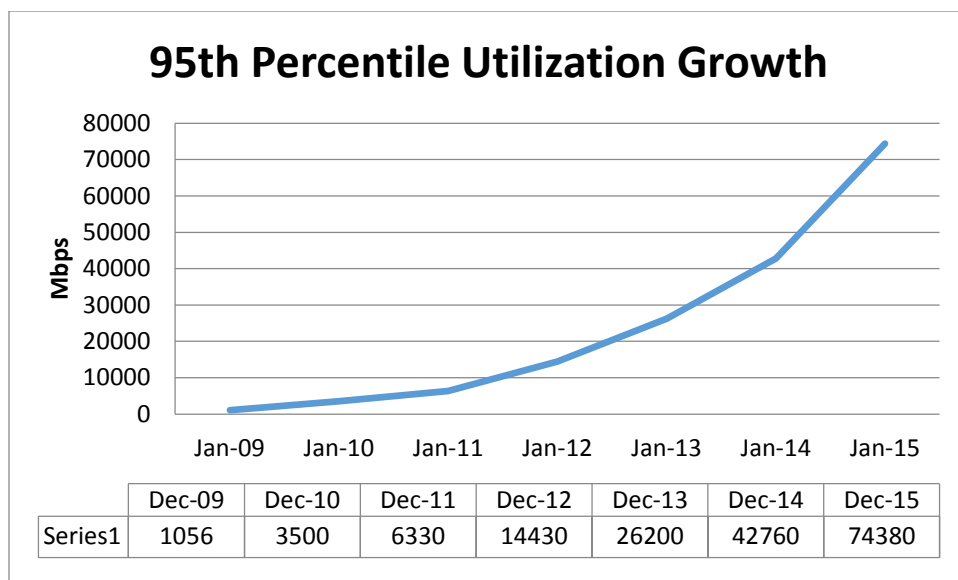


The chart above illustrates the CY2015 month over month growth in contracted Internet bandwidth. The monitoring and upgrade process ensures that schools have access to enough Internet capacity to support growth in devices and applications while at the same time protecting against expending funds for over-provisioning. Aggregate contracted bandwidth grew from 93Gbps in December 2014 to over 128Gbps in November of 2015. Each bar shows the bandwidth contribution in each of the service tiers. There are currently eight service tiers. The SCI team regularly works with the service provider community to add new service tier options to accommodate growth as efficiently as possible. To that end, a 15,000Mbps tier will be added in January 2016, when Wake County Schools and Charlotte-Mecklenburg Schools both transition from their current 10,000Mbps services. January typically sees substantial upgrades – this is true in part because the SCI team manages the scheduling of upgrades to avoid adding new services and expense during the summer months. As indicated in the chart below, only four LEAs remain at the lowest 100Mbps service tier, while 52 LEAs enjoy at least 1000Mbps (1Gbps) of Internet capacity.

Service Tier Distribution (# of LEAs) November 2015



Aggregate bandwidth usage continued the trend of phenomenal year over year growth in calendar year 2015. LEAs and charters continue to add devices, increase the use of digital resources, and upgrade school infrastructure – all of which contribute to increased usage. All told, K12 is the largest single user of MCNC’s NCREN backbone, contributing more traffic than the UNC system, the independent colleges and universities, and the community college system, combined. MCNC’s network continues to perform exceedingly well – maintaining high availability and low delay. Furthermore, MCNC peering, commodity offload, and caching solutions keep content close to the users and keep costs in check – even as usage doubles year over year.



This graph above shows average 95th percentile monthly usage growth since 2009. The 95th percentile usage for January 2015 was 41Gbps. The 95th percentile usage for December 2015 is nearly 74Gbps. The peak usage in December 2015 is 83Gbps, up more than 76% from the 47Gbps peak usage from January 2015, 11 months earlier. It is worth noting that there are many ways to represent actual usage and that MCNC monitoring takes into account several usage reporting models. For instance, MCNC also monitors peak daily usage in each district and Charter school. For the month of November 2015, the sum of the highest utilization days across all 115 LEAs was over 90Gbps. These peak days are smoothed in monthly average graphs; however understanding the peaks informs decisions related to defining *enough* bandwidth and *enough* headroom.

Internal Connections Summary

The school connectivity team concluded a statewide procurement of wireless equipment and related infrastructure and services during the 2015 calendar year. The result of that procurement was the establishment of twelve contracts, over \$42M in purchases, and the provisioning of digital ready wireless infrastructure to an additional 20,000 classrooms in 650 schools across 60 LEAs. E-rate funding covered \$34M of the \$42M in expense; with Race to the Top grant funds covering the \$8M local share. In total, the E-rate program committed over \$55M to North Carolina schools in 2015 for internal network connections – that is more than three times the typical commitment and accounts for 20% of the total E-rate commitment for internal networks in the 18-year history of the E-rate program. Session Law 2015-241 provides appropriated funds to expand the SCI, ensuring sustained refresh of internal school network infrastructure.

CONSIDERATIONS FOR 2016

Internal school connectivity

The SCI team issued an internal infrastructure survey to LEAs in early December 2015 in order to prepare budgets and related process for the 2016 Wi-Fi procurement. While the survey is still open, 62% of the 85 LEAs and charter schools that have completed the survey so far report having digital ready Wi-Fi available in all classrooms. With an aggressive procurement strategy for 2016, the target is to have 80% of NC public school classrooms digital ready by calendar year-end.

CNE contract renewal

The client network engineering service has proven to be an invaluable resource to schools and to the sustainability of reliable and equitable school connectivity. The contract with MCNC for CNE services expires in June 2015. NCDPI will release an RFP for procurement of CNE services in early 2016. The RFP will include provisions to increase support for Wi-Fi and related internal school infrastructure and services.

SCI 2.0

With the expansion of the SCI budget and scope, coupled with changes in the marketplace and in E-rate rules, the SCI team will be reshaping the SCI program during calendar year 2016. The reshaping will include:

- Establishing school fiber build and wide area network procurement guidelines;
- Developing procedures for sustained wireless connectivity procurement;
- Establishing fair and efficient allotment strategies for internal connection funding;
- Developing a strategy for addressing the growing issue of Charter School bandwidth costing disproportionately higher per student as compared to LEAs;
- Developing strategies for more granular monitoring – including content and application usage statistics;

SUPPORTING DOCUMENTATION

LEA and charter school connectivity allocation data can be found at the link below.

<http://www.dpi.state.nc.us/connectivity/links/funding/>

NC Digital Learning Plan documents including the 2015 Detailed and Summary reports, the wireless infrastructure survey, and wireless infrastructure RFP can be found at the links below.

<http://ncdlplan.fi.ncsu.edu/findings-and-recommendations/technology-infrastructure-and-devices/>
<http://ncdlplan.fi.ncsu.edu/category/publications/>

An interactive map that illustrates LEA and charter school aggregate and per student network utilization statistics can be found at the link below.

https://www.mcnc.org/ncren/portal/reporting/ncren_utilization_map

The balance of this report includes:

- The list of 2015 PRC 073 allotments by LEA and PRC073 allotments by Charter School;
- The NCDPI connectivity staff salary report; and
- E-rate program funding history reports for NC.

LEA PRC 073 ALLOCATIONS CY/FY2015 – REIMBURSEMENT FOR WAN COSTS

LEA #	Name	PRC073	LEA #	Name	PRC073
10	Alamance-Burlington	\$ 112,088	491	Mooreville	\$ 86,187
20	Alexander	\$ 64,255	500	Jackson	\$ 17,626
30	Alleghany	\$ 15,186	510	Johnston	\$ 162,342
40	Anson	\$ 29,032	520	Jones	\$ 11,977
50	Ashe	\$ 34,453	530	Lee	\$ 59,673
60	Avery	\$ 18,660	540	Lenoir	\$ 64,816
70	Beaufort	\$ 27,665	550	Lincoln	\$ 85,129
80	Bertie	\$ 28,064	560	Macon	\$ 64,432
90	Bladen	\$ 76,000	570	Madison	\$ 9,324
100	Brunswick	\$ 86,170	580	Martin	\$ 52,416
110	Buncombe Co	\$ 89,930	590	McDowell	\$ 40,668
111	Asheville City	\$ 51,259	600	Mecklenburg	\$ 540,837
120	Burke	\$ 46,874	610	Mitchell	\$ 5,320
130	Cabarrus	\$ 212,777	620	Montgomery	\$ 43,853
132	Kannapolis City	\$ 36,188	630	Moore	\$ 86,560
140	Caldwell	\$ 72,307	640	Nash-Rocky Mt	\$ 175,140
150	Camden	\$ 19,010	650	New Hanover	\$ 114,750
160	Carteret	\$ 99,372	660	Northampton	\$ 20,020
170	Caswell	\$ 14,193	670	Onslow	\$ 210,098
180	Catawba	\$ 140,314	680	Orange	\$ 51,998
181	Hickory City	\$ 48,312	681	Chapel Hill-Carrboro City	\$ 68,015
182	Newton-Conover City	\$ 13,736	690	Pamlico	\$ 16,616
190	Chatham	\$ 94,105	700	Elizabeth City Pasquotank	\$ 48,917
200	Cherokee	\$ 79,730	710	Pender	\$ 53,428
210	Edenton Chowan	\$ 29,609	720	Perquimans	\$ 24,688
220	Clay	\$ 25,999	730	Person	\$ 17,639
230	Cleveland	\$ 79,088	740	Pitt	\$ 185,951
240	Columbus	\$ 68,250	750	Polk	\$ 11,968
241	Whiteville City	\$ 4,663	760	Randolph	\$ 118,858
250	Craven	\$ 61,829	761	Asheboro City	\$ 23,472
260	Cumberland	\$ 424,973	770	Richmond	\$ 47,961
270	Currituck	\$ 19,702	780	Robeson	\$ 72,000
280	Dare	\$ 58,180	790	Rockingham	\$ 125,236
290	Davidson	\$ 141,851	800	Rowan-Salisbury	\$ 153,147
291	Lexington City	\$ 12,355	810	Rutherford	\$ 23,981
292	Thomasville City	\$ 22,544	820	Sampson	\$ 44,100
300	Davie	\$ 68,607	821	Clinton City	\$ 19,200
310	Duplin	\$ 54,795	830	Scotland	\$ 36,134
320	Durham	\$ 158,308	840	Stanly	\$ 124,609
330	Edgecombe	\$ 101,400	850	Stokes	\$ 142,132
340	Winston-Salem/Forsyth	\$ 449,640	860	Surry	\$ 23,769
350	Franklin	\$ 115,478	861	Elkin City	\$ 6,570
360	Gaston	\$ 179,648	862	Mount Airy City	\$ 9,780
370	Gates	\$ 18,448	870	Swain	\$ 14,921
380	Graham	\$ 2,062	880	Transylvania	\$ 20,169
390	Granville	\$ 41,702	890	Tyrell	\$ 2,238
400	Greene	\$ 24,934	900	Union	\$ 361,078
410	Guilford	\$ 400,784	910	Vance	\$ 52,188
420	Halifax	\$ 38,391	920	Wake	\$ 494,918
421	Roanoke Rapids	\$ 16,566	930	Warren	\$ 25,828
422	Weldon City	\$ 7,196	940	Washington	\$ 16,288
430	Harnett	\$ 192,523	950	Watauga	\$ 67,332
440	Haywood	\$ 92,160	960	Wayne	\$ 103,000

450	Henderson	\$	97,504	970	Wilkes	\$	42,522
460	Hertford	\$	16,341	980	Wilson	\$	32,499
470	Hoke	\$	38,056	990	Yadkin	\$	29,214
480	Hyde	\$	6,066	995	Yancey	\$	16,367
490	Iredell-Statesville	\$	340,773				

Total PRC073 Funding: \$ 9,500,000

PRC 073 Funds provide for the after E-rate local portion of Wide Area Network circuits that interconnect the schools within each LEA. Amounts distributed are verified against E-rate filings approved by USAC, the FCC's E-rate program administrator.

CHARTER PRC 036 ALLOCATIONS CY/FY2015 – REIMBURSEMENTS

ID#	Charter School	Funding	ID#	Charter School	Funding
01C	Clover Garden	\$ 4,817	60G	Queen's Grant Community	\$ 4,817
06A	Grandfather Academy	\$ 12,110	60I	Community School of Davidson	\$ 17,640
08A	Heritage Collegiate Ldrshp	\$ 5,998	60S	Bradford Prep	\$ 3,213
09A	Paul R. Brown Leadership Academy	\$ 5,998	60U	Commonwealth High	\$ 1,205
10B	South Brunswick Charter	\$ 4,817	60V	Charlotte Learning Academy	\$ 3,613
11C	Invest Collegiate - Imagine	\$ 4,817	60X	Entrepreneur High	\$ 4,817
11D	The Franklin School of Innov	\$ 3,213	60Y	Pioneer Springs Community	\$ 4,817
12A	New Dimensions	\$ 2,409	61J	Thunderbird Prep	\$ 2,809
13B	Cabarrus Charter Academy	\$ 4,817	61K	United Community	\$ 1,205
13C	A.C.E. Academy	\$ 2,009	63A	Academy of Moore County	\$ 5,580
16B	Tiller School	\$ 5,998	63B	Sandhills Theatre Arts Renaissance	\$ 5,580
20A	Learning Center	\$ 17,173	65A	Cape Fear Center for Inquiry	\$ 2,809
23A	Pinnacle Classical Academy	\$ 4,817	65B	Wilmington Preparatory Academy	\$ 4,817
24B	Flemington Academy	\$ 5,998	65D	Island Montessori	\$ 1,219
24N	Columbus Charter School	\$ 11,996	66A	Gaston College Preparatory	\$ 5,998
26B	Alpha Academy	\$ 1,500	68C	The Expedition School	\$ 5,998
26C	The Capitol Encore Academy	\$ 3,497	68N	PACE Academy	\$ 4,817
32A	Maureen Joy Charter School	\$ 5,580	78A	CIS Academy	\$ 4,817
32B	Healthy Start Academy Charter	\$ 5,580	79A	Bethany Community Middle	\$ 4,817
32C	Carter Community School	\$ 5,580	81A	Thomas Jefferson Classical Academy	\$ 3,450
32D	Kestrel Heights School	\$ 23,574	84B	Gray Stone Day School	\$ 5,580
32H	Research Triangle Charter Academy	\$ 5,580	86T	Millennium Charter Academy	\$ 5,998
32Q	Q Reaching All Minds Academy	\$ 5,580	87A	Mountain Discovery Charter	\$ 17,173
34D	Carter G. Woodson School of Challenge	\$ 805	88A	Brevard Academy	\$ 13,950
34F	Forsyth Academy	\$ 4,817	90A	Union Academy	\$ 5,040
34G	Arts Based School	\$ 4,817	91A	Vance Charter	\$ 5,998
35A	Crosscreek Charter	\$ 5,998	91B	Henderson Collegiate	\$ 5,998
36B	Piedmont Community	\$ 5,778	92F	Franklin Academy	\$ 5,998
39A	Falls Lake Academy	\$ 10,115	92G	East Wake Academy	\$ 4,817
41B	Greensboro Academy	\$ 4,817	92L	Torchlight Academy	\$ 805
41C	Guilford Prep Academy	\$ 3,094	92M	PreEminent Charter	\$ 4,817
41D	Phoenix Academy	\$ 4,817	92N	Quest Academy	\$ 4,817
41H	College Prep and Leadership Academy	\$ 4,817	92Q	Hope Elementary School	\$ 4,817
41J	Summerfield Charter Academy	\$ 4,817	92U	Longleaf School of the Arts	\$ 4,817
42A	KIPP Halifax College Prep	\$ 5,998	92V	Wake Forest Charter	\$ 4,817
43C	Anderson Creek Club	\$ 5,998	92W	Cardinal Charter *	\$ 4,817
45A	Mountain Community	\$ 4,817	92X	Dynamic Community	\$ 4,817
49B	American Renaissance	\$ 9,931	92Y	Envision Science Academy	\$ 3,213
49D	Success Institute	\$ 1,682	93A	Haliwa-Saponi Tribal	\$ 2,999
49F	Langtree Charter Academy	\$ 4,817	95A	Two Rivers Community	\$ 9,634
50A	Summit Charter	\$ 20,712	96C	Dillard Academy	\$ 4,817
54A	Children's Village Academy	\$ 5,998	96F	Wayne Prep	\$ 1,604
55A	Lincoln Charter	\$ 12,127	97D	Bridges Academy	\$ 4,999
60C	Kennedy School	\$ 4,817	98A	Sallie B. Howard	\$ 5,998
			98B	Wilson Prep	\$ 1,998
			Total Funding:		\$ 519,423

PRC 036 Funds provide Charter Schools that are not connected to NCREN with funding to assist in paying for Internet access, or, for multiple site Charter Schools, to help pay the WAN costs as filed with E-rate.

CONNECTIVITY STAFF SALARY REPORT

The following are NCDPI staff paid from School Connectivity Initiative funding and their respective salaries *Session Law 2007-323 SECTION 7.28.(g)*:

Title of Position and Description of Duties	Salary
Network Analyst: provides LEA/Charter School Technical Consulting, Strategic Planning, Project Management	\$82,102
Network Analyst: provides LEA/Charter School Technical Consulting, Strategic Planning	\$75,000
Education Program Administrator I: provides E-rate Education and Consultation Services	\$71,295
Education Program Administrator I: (Vacant) provides E-rate Education and Consultation Services	\$71,840
Education Consultant II: Assists with Digital Teaching and Learning Integration	\$66,093
Education Consultant II: Assists with Digital Teaching and Learning Integration	\$52,882
Total	\$419,212

State of North Carolina E-Rate Program Funding History									
Total Program Funding History (Category 1 and Category 2)									
Year	Total Requests	Recurring Amount	Non-Recurring Amount	Requested Amount	Committed Amount	Pending Amount	Disbursed Amount	Rejected Amount	Utilization %
2015	2,609	\$90,614,207.66	\$71,144,108.56	\$121,414,108.19	\$117,205,967.28	\$2,988,478.50	\$18,486,591.09	\$1,219,662.41	16%
2014	1,949	\$110,308,438.31	\$34,164,231.85	\$114,854,299.91	\$77,499,806.26	\$0.00	\$64,858,248.12	\$37,354,493.65	84%
2013	1,940	\$111,527,372.59	\$30,837,300.86	\$114,461,896.47	\$75,266,917.49	\$0.00	\$66,223,408.84	\$39,194,978.98	88%
2012	1,940	\$106,198,952.56	\$46,709,605.94	\$122,044,867.91	\$88,161,636.43	\$0.00	\$77,272,007.93	\$33,883,231.48	88%
2011	2,031	\$89,437,214.86	\$50,297,731.35	\$111,590,013.42	\$78,932,389.61	\$0.00	\$69,261,154.17	\$32,657,623.81	88%
2010	1,973	\$85,240,432.25	\$38,418,866.42	\$96,539,783.23	\$88,509,827.49	\$0.00	\$73,724,498.43	\$8,029,955.74	83%
2009	1,830	\$83,338,000.80	\$28,311,003.68	\$84,383,889.89	\$70,126,046.66	\$0.00	\$58,113,268.35	\$14,257,843.23	83%
2008	1,892	\$74,332,025.41	\$28,714,864.86	\$78,539,107.48	\$63,653,881.03	\$0.00	\$55,743,373.25	\$14,885,226.45	88%
2007	2,407	\$71,820,449.03	\$39,189,934.21	\$85,044,974.71	\$63,911,579.49	\$0.00	\$54,468,199.05	\$21,133,395.22	85%
2006	2,080	\$73,436,582.81	\$47,060,592.40	\$92,869,427.79	\$52,489,845.72	\$73,640.00	\$44,191,134.17	\$40,305,942.07	84%
2005	3,084	\$60,574,839.55	\$48,574,100.65	\$81,583,067.13	\$58,166,059.75	\$98,810.42	\$49,453,095.51	\$23,318,196.96	85%
2004	3,111	\$56,367,733.53	\$34,661,521.90	\$67,164,040.16	\$43,093,776.64	\$0.00	\$34,790,050.34	\$24,070,263.52	81%
2003	2,970	\$67,309,872.39	\$46,716,227.16	\$88,494,407.93	\$51,169,282.30	\$0.00	\$41,172,324.82	\$37,325,125.63	80%
2002	2,820	\$53,413,118.94	\$43,766,751.59	\$75,282,774.83	\$53,660,113.95	\$36,296.60	\$43,506,745.60	\$21,586,364.28	81%
2001	3,205	\$40,193,978.11	\$33,790,156.50	\$53,220,062.96	\$25,464,776.12	\$0.00	\$19,999,779.37	\$27,755,286.84	79%
2000	3,722	\$35,268,123.03	\$59,379,815.77	\$66,087,851.04	\$26,878,868.75	\$0.00	\$23,509,082.31	\$39,208,982.29	87%
1999	2,518	\$38,228,166.35	\$27,750,716.68	\$44,734,121.86	\$37,921,653.91	\$273.04	\$30,197,180.31	\$6,812,194.91	80%
1998	4,036	\$28,715,337.20	\$27,621,066.64	\$35,442,188.74	\$26,857,934.95	\$0.00	\$21,194,807.30	\$8,584,253.79	79%
46,117		\$1,276,324,845.38	\$737,108,597.02	\$1,533,750,883.65	\$1,098,970,363.83	\$3,197,498.56	\$846,164,948.96	\$431,583,021.26	

State of North Carolina E-Rate Program Funding History									
Total Program Funding History (Category 2 – Internal Connections)									
Year	Total Requests	Recurring Amount	Non-Recurring Amount	Requested Amount	Committed Amount	Pending Amount	Disbursed Amount	Rejected Amount	Utilization %
2015	1,085	\$402,086	\$70,502,445	\$56,776,345	\$55,410,429	\$844,894	\$11,167,824	\$521,022	20%
2014	287	\$568,323	\$30,918,999	\$28,112,342	\$0	\$0	\$0	\$28,112,342	0%
2013	211	\$4,932,901	\$28,046,468	\$29,571,389	\$0	\$0	\$0	\$29,571,389	0%
2012	217	\$4,122,113	\$43,460,929	\$41,506,137	\$17,776,653	\$0	\$16,105,185	\$23,729,485	91%
2011	335	\$3,892,391	\$47,124,712	\$44,217,114	\$17,217,652	\$0	\$15,682,007	\$26,999,462	91%
2010	248	\$730,013	\$33,962,692	\$30,256,250	\$26,514,909	\$0	\$22,494,778	\$3,741,341	85%
2009	157	\$45,740	\$23,975,128	\$20,884,072	\$11,687,696	\$0	\$11,378,339	\$9,196,376	97%
2008	262	\$189,130	\$26,324,862	\$22,621,264	\$10,801,304	\$0	\$9,757,666	\$11,819,960	90%
2007	586	\$1,242,299	\$36,167,446	\$31,972,574	\$15,878,660	\$0	\$13,831,624	\$16,093,914	87%
2006	364	\$3,395,805	\$45,252,908	\$41,247,324	\$10,378,458	\$0	\$8,959,454	\$30,868,866	86%
2005	1,217	\$4,241,231	\$42,337,125	\$36,986,080	\$19,812,640	\$0	\$17,346,638	\$17,173,440	88%
2004	871	\$4,098,848	\$31,593,018	\$29,758,185	\$11,775,831	\$0	\$8,512,783	\$17,982,354	72%
2003	865	\$3,273,272	\$40,569,863	\$37,678,620	\$17,898,420	\$0	\$13,112,555	\$19,780,201	73%
2002	682	\$1,906,442	\$41,825,778	\$37,946,726	\$21,333,248	\$0	\$16,655,098	\$16,613,478	78%
2001	1,472	\$3,618,622	\$33,154,727	\$28,712,293	\$4,237,011	\$0	\$3,067,958	\$24,475,282	72%
2000	2,222	\$3,217,795	\$58,524,276	\$44,900,268	\$6,542,956	\$0	\$7,759,535	\$38,357,313	119%
1999	975	\$2,546,010	\$26,761,113	\$22,146,109	\$19,030,539	\$0	\$17,269,053	\$3,115,570	91%
1998	2,292	\$4,280,455	\$25,473,246	\$18,578,382	\$10,733,197	\$0	\$9,349,088	\$7,845,185	87%
	14,348	\$46,703,476	\$685,975,736	\$603,871,477	\$277,029,604	\$844,894	\$202,449,583	\$325,996,979	