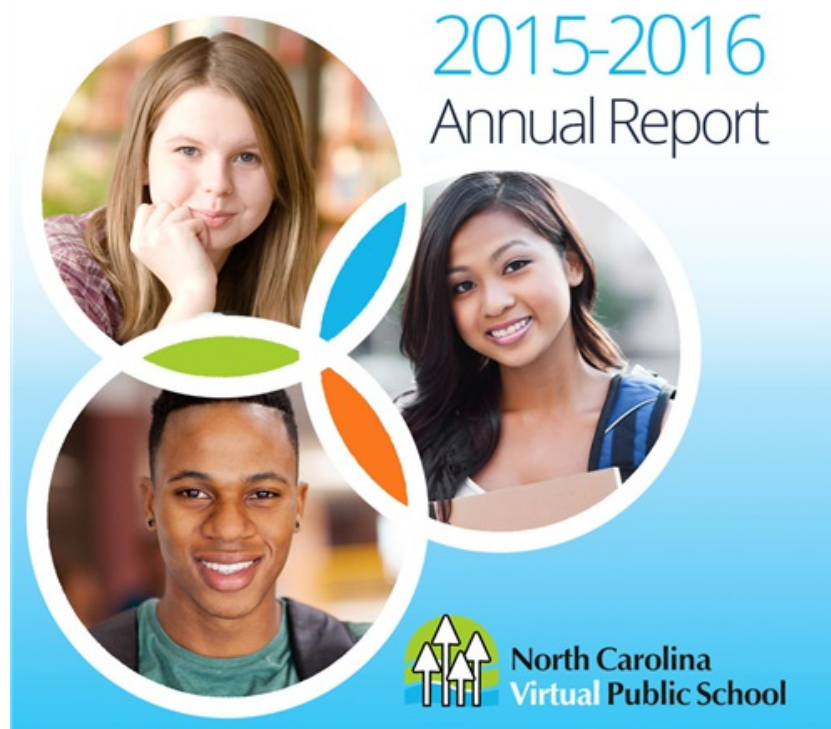


NCVPS Annual Report 2015-2016

A Year in NCVPS	NCVPS Scorecard 2015-2016	Enrollment History	Academic Results	NCVPS Teachers	Impact on District ADM	Projected vs. Actual Enrollment
-----------------	------------------------------	--------------------	------------------	----------------	---------------------------	------------------------------------



The North Carolina Virtual Public School has been in successful operation since 2007 serving over 379,138 student enrollments since that first year. Below is a list of accomplishments, facts, and recognitions that make the 2015-2016 school year unique.

Over 58,000 enrollments from approximately 36,000 students, which documents the highest enrollment ever for NCVPS

NCVPS students in regular education courses scored above state averages for the three End-of-Course tests: Biology, English II, and Math I

NCVPS participated in the state biennial Teacher Working Conditions Survey, the first virtual school in the country to participate in a statewide teacher working conditions survey

Successfully transitioned the entire course catalog to the Canvas Learning Management System

Piloted English I with support for English Learners course

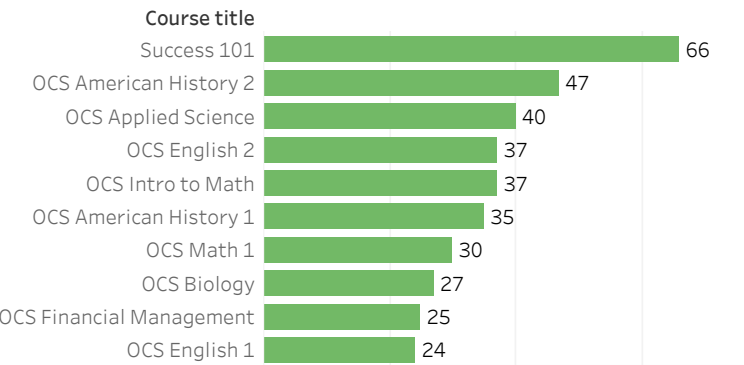
148 teachers participated in the Teacher-in-Training teacher induction program to teach with NCVPS

NCVPS Annual Report 2015-2016

A Year in NCVPS	NCVPS Scorecard 2015-2016	Enrollment History	Academic Results	NCVPS Teachers	Impact on District ADM	Projected vs. Actual Enrollment
-----------------	---------------------------	--------------------	------------------	----------------	------------------------	---------------------------------

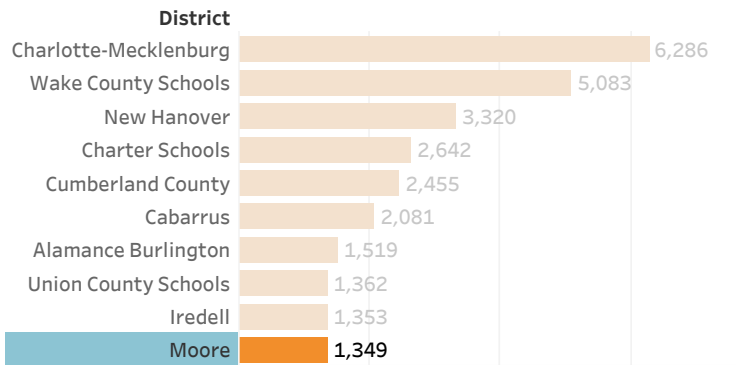
NCVPS Scorecard 2015-16: The scorecard is designed to highlight the successful statewide use of NCVPS. Critical metrics show student performance, our top enrolling districts as well as the most popular courses. Information about courses including type and department is also included.

Top Courses 15-16



Course title All

Top Enrolling Districts 15-16



District All

(click to explore district enrollment)

Course Enrollment by Type 15-16

(click to explore course titles)



NCVPS Annual Report 2015-2016

A Year in NCVPS	NCVPS Scorecard 2015-2016	Enrollment History	Academic Results	NCVPS Teachers	Impact on District ADM	Projected vs. Actual Enrollment
-----------------	---------------------------	--------------------	------------------	----------------	------------------------	---------------------------------

Total enrollments for 2015-2016: 58,003

Total enrollments from Summer 2007 to Spring 2016: 379,138

LOCAL EDUCATION AGENCY (LEAs)

115 LEAs participated in NCVPS online courses

105 LEAs used more than 75% of their projected enrollments

63 LEAs used more than 100% of their projected enrollments and utilized reserve funds

10 LEAs used less than 75% of their projected enrollments

CHARTER SCHOOLS

70 charter schools participated in NCVPS online courses

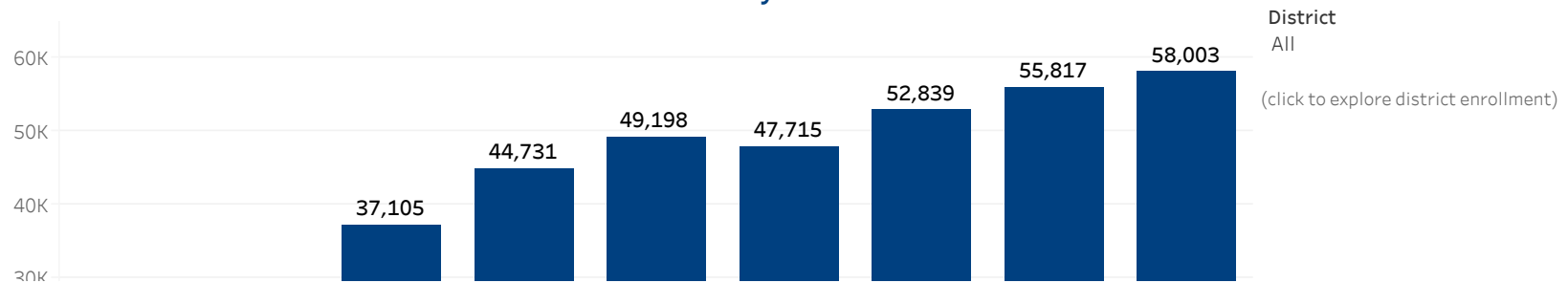
37 charter schools used more than 75% of their projected enrollments

30 LEAs used more than 100% of their projected enrollments and utilized reserve fund

38 LEAs used less than 75% of their projected enrollments

23 charter schools used 0% of their projected enrollments

Enrollment History



NCVPS Annual Report 2015-2016

A Year in NCVPS	NCVPS Scorecard 2015-2016	Enrollment History	Academic Results	NCVPS Teachers	Impact on District ADM	Projected vs. Actual Enrollment
-----------------	---------------------------	--------------------	------------------	----------------	------------------------	---------------------------------

Academic Results

End-of-Course Test Results 2015-2016

General/Honors

Test	Scores						Calculations					State Scores
	Non-Reported	1	2	3	4	5	Total NCVPS Enrollments	Total Scores Reported	Percent Reported	Number Proficient	Percent Proficient	2015-16 State Averages
Biology	25	31	35	13	58	27	189	164	86.8%	98	59.8%	55.5%
English II	77	30	29	17	123	19	246	218	88.6%	159	72.9%	58.8%
Math I	31	84	39	25	114	121	414	383	92.5%	260	67.9%	60.5%

Credit Recovery

Test	Scores						Calculations					State Scores
	Non-Reported	1	2	3	4	5	Total NCVPS Enrollments	Total Scores Reported	Percent Reported	Number Proficient	Percent Proficient	2015-16 State Averages
Biology	70	42	13	3	5	0	133	63	47.4%	8	12.7%	55.5%
English II	77	25	13	7	11	0	133	56	42.1%	18	32.1%	58.8%
Math I	110	100	27	3	5	0	245	135	55.1%	8	5.9%	60.5%

Occupational Course of Study

	Scores						Calculations					State Scores
	Non-Reported	1	2	3	4	5	Total NCVPS Enrollments	Total Scores Reported	Percent Reported	Number Proficient	Percent Proficient	2015-16 State Averages

Advanced Placement Results 2015-2016

2015-2016 Courses	# of Tests Taken	NCVPS Pass Rate	State Pass Rate	National Pass Rate
AP Calculus AB	63	20.6%	50.4%	59.50%
AP Calculus BC	45	64.4%	74.0%	81.1%
AP Computer Science	233	54.5%	49.3%	64.5%
AP English Language/Comp	50	60.0%	53.4%	55.4%
AP English Literature/Comp	67	56.7%	50.9%	54.6%
AP European History	60	46.7%	46.3%	52.6%
AP Environmental Science	154	36.6%	47.6%	54.6%
AP US Government and Politics	239	59.0%	51.9%	50.8%
AP Human Geography	482	39.4%	55.8%	51.8%
AP Mandarin/ AP Chinese Language and Culture	33	93.9%	84.2%	93.7%
AP Music Theory	100	30.0%	54.8%	58.4%
AP Physics 1	73	45.2%	45.2%	39.8%
AP Physics 2	14	71.4%	59.6%	61.3%
AP Psychology	751	48.3%	54.2%	64.2%
AP United States History	131	33.6%	47.7%	52.4%
AP World History	119	47.9%	55.2%	51.6%

Indicates NCVPS courses earning a higher pass rate than state and national average

NCVPS Annual Report 2015-2016

A Year in NCVPS	NCVPS Scorecard 2015-2016	Enrollment History	Academic Results	NCVPS Teachers	Impact on District ADM	Projected vs. Actual Enrollment
-----------------	------------------------------	--------------------	------------------	----------------	---------------------------	------------------------------------

VIRTUAL TEACHER SALARIES (These are per student amounts)

Per Student, Teacher Pay	Summer	Block	Year-Long
2009-2010	\$225	\$450	\$450
2010-2011	\$200	\$350	\$400
2011-2012	\$200	\$306	\$390
2012-2013	\$200	\$306	\$390
2013-2014	\$200	\$306	\$390
2014-2015	\$200	\$306	\$390
2015-2016	\$200	\$306	\$390

In 2015-2016, NCVPS contracted with **814** teachers and conversation coaches.
Teacher salaries from the payroll for 2015-2016 total **\$19,671,887.53**.

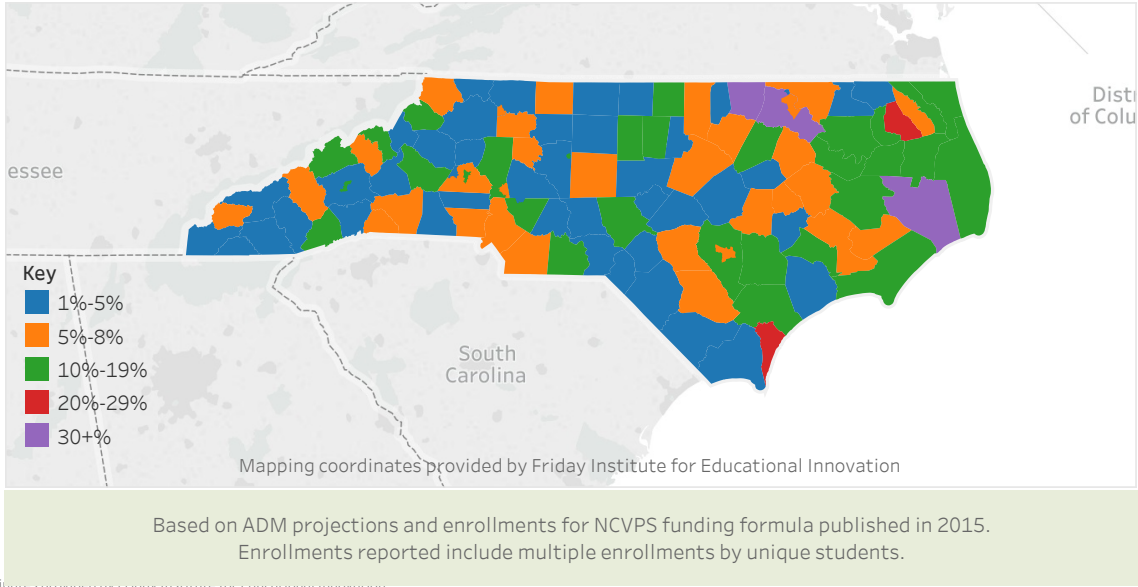
Teacher Induction Program

The Teacher Induction Process, entitled Teacher-in-Training (TnT), is a required of all potential teachers and includes 16 weeks of specialized, unpaid training and professional learning. This consists of a nine-week online course and a nine-week practicum in which potential teachers, also referred to Teachers in Training, earn four continuing education credits. During the coursework, TnTs learn NCVPS policies, procedures, expectations, how to work within a learning management system, NCVPS instructional design principles, and best practices for teaching through communication, grading and feedback,

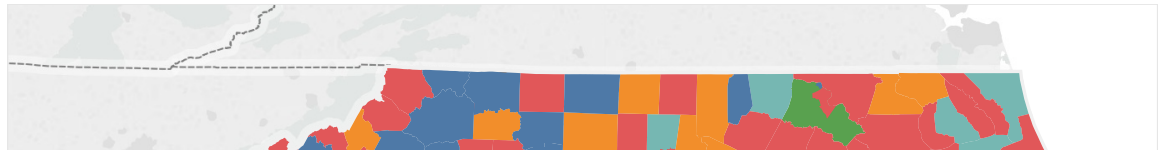
NCVPS Annual Report 2015-2016

A Year in NCVPS	NCVPS Scorecard 2015-2016	Enrollment History	Academic Results	NCVPS Teachers	Impact on District ADM	Projected vs. Actual Enrollment
-----------------	---------------------------	--------------------	------------------	----------------	------------------------	---------------------------------

NCVPS PERCENTAGE OF ALL ENROLLMENTS FOR DISTRICT ADM, GRADES 6-12
2015-2016 SCHOOL YEAR



NCVPS PERCENTAGE OF UNIQUE, NON-DUPLICATIVE ENROLLMENTS FOR DISTRICT ADM, GRADES 6-12
2015-2016 SCHOOL YEAR



NCVPS Annual Report 2015-2016

A Year in NCVPS	NCVPS Scorecard 2015-2016	Enrollment History	Academic Results	NCVPS Teachers	Impact on District ADM	Projected vs. Actual Enrollment
-----------------	------------------------------	--------------------	------------------	----------------	---------------------------	------------------------------------

Projections vs. Actual Enrollments Detail LEAs Participating

LEA	Actual Costs	Projection	Difference	Percent of Projection Used	Adjustments for Enrollments to 100%
Alamance-Burlington	\$516,868.00	\$474,392.00	-\$42,476.00	109%	-\$118,598.00
Alexander County	\$49,856.00	\$31,438.00	-\$18,418.00	159%	-\$7,859.00
Alleghany County	\$4,188.00	\$24,177.00	\$19,989.00	17%	\$13,945.00
Anson County	\$60,374.00	\$58,993.00	-\$1,381.00	102%	-\$14,748.00
Ashe County	\$42,941.00	\$46,933.00	\$3,992.00	91%	-\$7,741.00
Asheboro City	\$79,471.00	\$86,327.00	\$6,856.00	92%	-\$14,726.00
Asheville City	\$90,732.00	\$101,128.00	\$10,396.00	90%	-\$14,886.00
Avery County	\$17,870.00	\$16,417.00	-\$1,453.00	109%	-\$4,104.00
Beaufort County	\$157,291.00	\$197,173.00	\$39,882.00	80%	-\$9,411.00
Bertie County	\$55,733.00	\$80,494.00	\$24,761.00	69%	\$4,638.00
Bladen County	\$61,017.00	\$46,925.00	-\$14,092.00	130%	-\$11,731.00
Brunswick County	\$46,230.00	\$35,369.00	-\$10,861.00	131%	-\$8,842.00
Buncombe County	\$141,093.00	\$190,594.00	\$49,501.00	74%	\$1,856.00
Burke County	\$293,280.00	\$259,673.00	-\$33,607.00	113%	-\$64,918.00
Cabarrus County	\$816,035.00	\$579,606.00	-\$236,429.00	141%	-\$144,901.00

Percent of Projection Used
From 15%

LEA
All

Projections vs. Actual Enrollments Detail Charters Participating