



Public Schools of North Carolina  
State Board of Education  
Department of Public Instruction

---

# Report to the North Carolina General Assembly

---

School Connectivity Initiative

*SL 2007-323 (HB 1473), SECTION 7.28.(d)*

---

**Date Due: January 15, 2018**

Report # 47

DPI Chronological Schedule, 2017-2018

## STATE BOARD OF EDUCATION

SBE VISION: Every public school student will graduate ready for post-secondary education and work, prepared to be a globally engaged and productive citizen.

SBE MISSION: The State Board of Education will use its constitutional authority to lead and uphold the system of public education in North Carolina.

### **WILLIAM COBEY**

Chair :: Chapel Hill – At-Large

### **BECKY TAYLOR**

Greenville – Northeast Region

### **TODD CHASTEEN**

Blowing Rock – Northwest Region

### **A.L. COLLINS**

Vice Chair :: Kernersville – Piedmont Triad Region

### **REGINALD KENAN**

Rose Hill – Southeast Region

### **WAYNE MCDEVITT**

Asheville – Western Region

### **DAN FOREST**

Lieutenant Governor :: Raleigh – Ex Officio

### **AMY WHITE**

Garner – North Central Region

### **ERIC DAVIS**

Charlotte – At-Large

### **DALE FOLWELL**

State Treasurer :: Raleigh – Ex Officio

### **OLIVIA OXENDINE**

Lumberton – Sandhills Region

### **PATRICIA N. WILLOUGHBY**

Raleigh – At-Large

### **MARK JOHNSON**

Secretary to the Board :: Raleigh

### **GREG ALCORN**

Salisbury – Southwest Region

## NC DEPARTMENT OF PUBLIC INSTRUCTION

**Mark Johnson, State Superintendent :: 301 N. Wilmington Street :: Raleigh, North Carolina 27601-2825**

In compliance with federal law, the NC Department of Public Instruction administers all state-operated educational programs, employment activities and admissions without discrimination because of race, religion, national or ethnic origin, color, age, military service, disability, or gender, except where exemption is appropriate and allowed by law.

### **Inquiries or complaints regarding discrimination issues should be directed to:**

Maria Pitre-Martin, Ph.D., Deputy State Superintendent :: 6307 Mail Service Center, Raleigh, NC 27699-6307  
Phone: (919) 807-3759 :: Fax: (919) 807-4065

Visit us on the Web :: [www.ncpublicschools.org](http://www.ncpublicschools.org)

M0517

# **SCHOOL CONNECTIVITY INITIATIVE**

## **Legislative Update**

---

*Submitted to:*

Joint Legislative Oversight Committee on Information Technology  
Joint Legislative Education Oversight Committee  
Office of State Budget and Management  
State Chief Information Officer  
Fiscal Research Division

*Prepared by*

Connectivity and E-rate Services Section  
Technology Services Area  
North Carolina Department of Public Instruction

---

---

## FOREWORD

---

The School Connectivity Initiative (SCI) was created by *Session Law 2007-323 SECTION 7.28.(d)* as follows:

*SECTION 7.28.(b) As recommended in the Joint Report on Information Technology, February 2007, the State Board of Education shall contract with an entity that has the capacity of serving as the administrator of the School Connectivity Initiative and has demonstrated success in providing network services to education institutions in the State. The funds appropriated in this act shall be used to implement a plan approved by the State Board of Education to enhance the technology infrastructure for public schools that supports teaching and learning in the classrooms. The plan shall include the following components:*

- (1) A business plan with timelines, clearly defined outcomes and an operational model including a governance structure, personnel, E-rate reimbursement, support services to LEA's and schools and budget;*
- (2) Assurances for a fair and open bidding and contracting process;*
- (3) Technology assessment site survey template;*
- (4) Documentation of how the technology will be used to enhance teaching in learning;*
- (5) Documentation of how existing State-invested funds for technology are maximized to implement the school connectivity initiative;*
- (6) The number, location and schedule of sites to be served in 2007-2008 and in 2008-2009; and*
- (7) Assurances that local school administrative units will upgrade internal networks in schools, provide technology tools, and support for teachers and students to use technology to improve teaching and learning.*

The NC State Board of Education approved the School Connectivity Initiative *Implementation and Operating Plan* on Thursday, August 2, 2007. The SCI program was managed through the NC ITS Enterprise Project Management Office supervising projects that gained initial EPMO approval in September 2007. Within the *Implementation and Operating Plan* were the following deliverables, all of which were completed in 2009:

- All 115 Local Education Agencies (LEAs) connected to MCNC's North Carolina Research and Education Network (NCREN)
- Establishment of Client Network Engineering Services for LEAs
- Establishment of E-rate Filing Assistance Bureau
- Development of a Technology Master Plan
- Development of Governance and Funding Plans

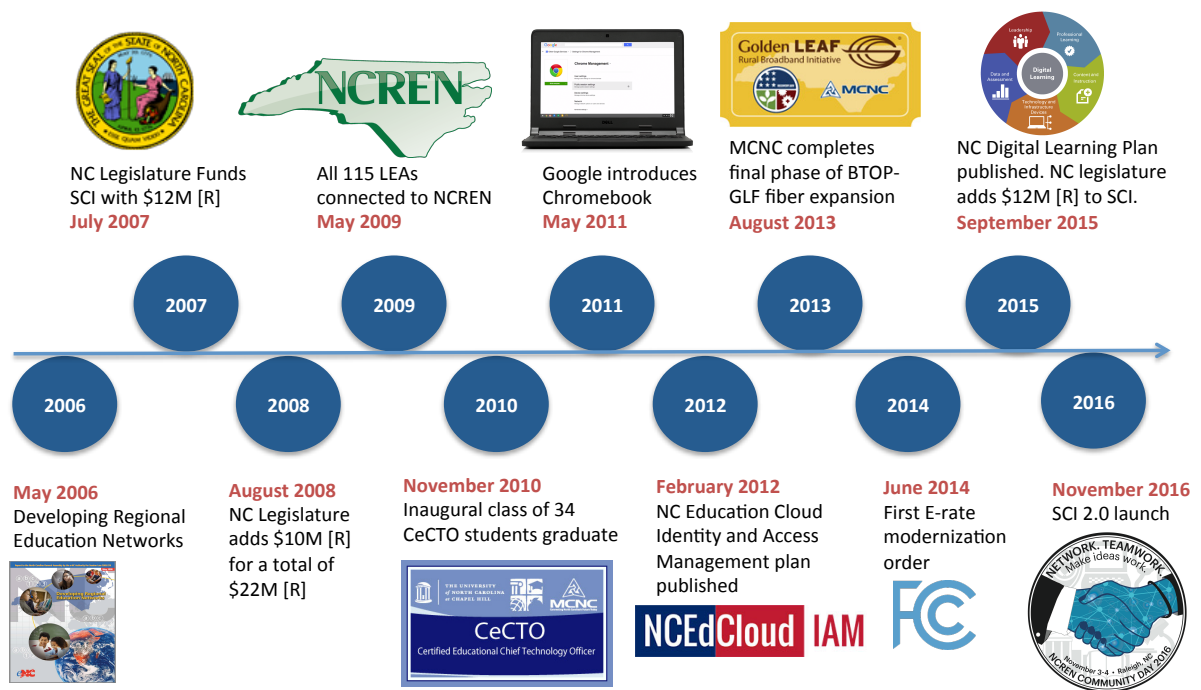
Each year since the inception of the SCI program, the State Board of Education and the Department of Public Instruction produces a School Connectivity Initiative Report that summarizes the fiscal and functional performance of the program and provides insights into the work of the coming year.

*“High-speed broadband connections to schools and advanced Wi-Fi inside classrooms have become essential tools for teachers and students. A major conclusion of the FCC's recent modernization of the E-rate program is that local jurisdictions benefit substantially from state-level assistance in the design, procurement, and ongoing support of this complex communications infrastructure. In our nationwide review of state approaches, we found North Carolina's model to be one of the most effective in the country. State-level support in North Carolina not only with matching financial resources but also purchasing and technical expertise from a dedicated professional staff at the state level has had a major positive impact for schools across North Carolina that stands out as a leading national example.”*

Jon Wilkins  
Former Managing Director  
Federal Communications Commission

## BACKGROUND

The School Connectivity Initiative launched in earnest with the publication of the *Developing Regional Education Networks* report in May 2006. In the eleven years since the inception of the SCI program, NC public schools have procured nearly \$900M in network services and infrastructure with State appropriations over \$215M leveraged against \$700M in federal communications commission (FCC) E-rate discount funding. During the eleven-year stretch, the telecommunications and computing markets have shifted dramatically, the regulatory environment has been in near constant flux, and the NC legislature has called for and invested in a digital transition in public schools. Perhaps most impressively, NC public schools average Internet usage has grown from about 1000 Megabits per second (Mbps) in 2009 to over 108,000 Megabits per second at the writing of this report – with a similar growth forecast for the foreseeable future.



As illustrated by the timeline above, the SCI program has exhibited extraordinary productivity and opportunistic adaptability over its ten-year history. Just a few highlights include: connecting all LEAs to the NC Research and Education Network using an opt-in approach; establishing the Certified Educational Chief Technology Officer (CeCTO) training program; developing, designing and implementing the NCEdCloud identity and access management service; partnering with MCNC and the Golden Leaf Foundation to bring competitive fiber connectivity to rural NC schools and libraries; and, adapting to the NC Digital Learning Plan, the FCC E-rate modernization order, and the growth of 1:1 programs fueled by the release of inexpensive computing devices. While the SCI team has accomplished much in its first decade, the team continues to adapt and innovate.

The balance of this report provides a summary of 2017 accomplishments, a financial summary, capacity and usage summary, considerations for 2018, and appendices containing detailed supporting data.

---

## EXECUTIVE SUMMARY

---

The School Connectivity Initiative (SCI) continues to deliver high quality Internet access, client network engineering, Identity services, E-rate support and funding that benefit all NC public schools. Pursuant to the Appropriations Act of 2015 (S.L. 2015-241), the 2017-18 SCI budget is \$31.2M. Major calendar year 2017 SCI accomplishments include:

- Upgraded Internet access to 39 LEAs and 14 charter schools – adding over 40Gbps of aggregate Internet capacity;
- Connected 14 new charter schools to the NC Research and Education Network (NCREN);
- Provided firewall services to 74 LEAs and 106 Charter Schools;
- Provided web security (Internet filtering) services to 80 LEAs and 108 Charter Schools
- Supported 52 LEAs and 59 charter schools with client network engineering (CNE) support services, through 176 total CNE engagements (93 LEA and 83 charter school);
- Continued to focus on high-quality, cost-effective training for public K-12 network administrators in North Carolina. Part of the professional development model is to contract with professional trainers and industry experts for three to five-day intensive training institutes. In 2017, this included courses in PowerShell Scripting for system administrators (26 K-12 participants) and two wireless certification courses (37 K-12 participants); 20 LEA and charter school technology personnel passed the wireless certification exam and received a highly regarded Certified Wireless Network Administrator (CWNA) certification;
- Negotiated and awarded a new consortium Internet contract supporting all LEAs and charter schools – cutting Internet access costs in half.

### Consortium Internet Contract

During the Spring of 2017, the SCI team developed and issued an RFP for the procurement of Internet access with fiber connectivity for all NC LEAs and charter schools. The resulting contract cuts total Internet costs nearly in half and reduces the State contribution by \$1M. We anticipate that over the 3-year term of the contract, growth in contracted bandwidth will continue at a steady pace though total out of pocket costs will remain lower than pre-2017 totals.

### Optimizing School Connectivity Efficiency and Return on Investment

While the SCI planning, design, and deployment has focused on upgrading classroom connectivity, we continue to emphasize efficiency and return on investment. Efficiency of operation will always be important for the SCI program as usage continues to grow at a phenomenal pace – and though connectivity service costs continue to drop, the increase in usage and the addition of at least a dozen charter schools per year can easily make for a steeper rise than can be accounted for with cost decreases. Further, through modeling and forecasting we are developing approaches to optimizing E-rate returns and to inform network design, capacity planning, and procurement.



---

## PERFORMANCE OVERVIEW

---

### Financial Summary

For 2017 the School Connectivity Initiative is a \$88M program supported with legislative funding of \$31.2M leveraged against FCC E-rate program reimbursements in excess of \$56M. The table below summarizes SCI costs and related State funding and FCC E-rate reimbursements.

	Total Cost	E-rate Share	State Share
Category 1 School Fiber Connections (WAN)	\$34.5M	\$26.8M	\$7.7M
Category 1 Consortium Internet	\$15.3M	\$11.9M	\$3.4M
Category 2 Classroom Connections (Wi-Fi)	\$28.8M	\$17.9M	\$10.9M
<b>E-rate Eligible Totals</b>	<b>\$78.6M</b>	<b>\$56.6M</b>	<b>\$22.0M</b>
Identity and Access Management	\$1.5M	Not eligible	\$1.5M
Client Network Engineering	\$1.8M	Not eligible	\$1.8M
Program Administration – NCDPI, FFL, FI	\$0.9M	Not eligible	\$0.9M
Firewall Services	\$1.8M	Not eligible	\$1.8M
Content Filtering Services	\$3.5M	Not eligible	\$3.5M
<b>Non E-rate Eligible Totals</b>	<b>\$9.5M</b>	<b>Not eligible</b>	<b>\$9.5M</b>
<b>Grand Totals</b>	<b>\$88.1M</b>	<b>\$56.6M</b>	<b>\$31.5M</b>

Most SCI expenditures are eligible for FCC E-rate discounts. E-rate eligible expenses are grouped into Category 1 and Category 2. Category 1 expenses include high-speed fiber optic<sup>1</sup> connections to schools and districts and Internet bandwidth charges. Category 2 expenses include wireless and wired infrastructure and services deployed inside schools to connect classrooms to the Internet. For 2017, total E-rate eligible expenses are over \$78M with E-rate discounts of \$56M, leaving a State share of \$22M. Total cost is down 30% from 2016, primarily due to substantial cost savings achieved in all services and equipment categories. It is also notable that almost all telephony expenses are no longer E-rate eligible, also contributing to total cost and E-rate reductions. The \$9.5M balance of SCI expenses comprises non-E-rate eligible services including identity and access management, client network engineering support, program administration, firewall services, and content filtering services. Specifically, SCI program expenses include the following.

---

<sup>1</sup> Over 99% the 2694 schools in North Carolina are connected via fiber optic connection – fewer than 15 schools are connected via a copper or wireless solution.

1. Category 1 School Fiber Connections – Most LEAs contract with private providers to connect their schools into a district network via high-speed fiber optic connections<sup>2</sup>. Private providers include Spectrum, AT&T, CenturyLink, Broadplex, Conterra, and others. These school connections are eligible for FCC E-rate discounts of up to 90%. The SCI provides support and training in acquiring school connections and provides funding allotments to cover the non-discount share of costs to all NC LEAs. NCDPI calculates allocations based on actual contracts and invoices and delivers funding via PRC 073. Since the inception of the SCI, funding totals have remained in the \$9M to \$10M range – even with substantial upgrades to school bandwidth and services each year. In 2017, we saw a dramatic decrease in total cost of school connections which translated into a \$1.5M decrease in State contribution compared to 2016.
2. Category 1 Consortium School Internet – Core to the SCI is that all NC LEAs and charter schools have access to reliable high-speed Internet access via the NC Research and Education Network (NCREN) managed by MCNC – the same network that provides Internet access to the UNC system universities, NC community colleges, most NC private colleges and universities, and all of State government. Internet connections are monitored and upgraded on demand as usage exceeds 60% of available capacity. Charter schools have the option of either receiving a per ADM allotment via PRC 036<sup>3</sup> or receiving State-funded Internet access. During 2017, the SCI program re-bid Internet connectivity, resulting in a substantial decrease in contract costs and leading to a \$1.3M decrease compared to 2016.
3. Category 2 Classroom Connections – In Spring of 2017, NC LEAs and charter schools procured nearly \$29M in classroom connectivity infrastructure and services; over 95% of those procurements used contracts established by NCDPI. The SCI provides support and training in acquiring internal school infrastructure and provides funding allotments to cover the non-discount share of costs to participating LEAs and charter schools. NCDPI calculates allocations based on actual contracts and invoices and delivers funding via PRC 073 to LEAs and PRC 036 to charter schools – for 2017, to total State contribution is calculated to be \$10.9M.
4. Identity and Access Management – The 2015 appropriations act expanded the SCI budget by \$12M annually effective FY2016-17. Identity and access management (IAM) services are included in the expansion budget. *NCEdCloud* IAM services provide for a single user ID and password for students, faculty and staff to access network accessible content. IAM services automate the provisioning and management of nearly 2.5 million user accounts and the integration of those accounts with cloud-based applications and services. NCDPI manages the NCEdCloud IAM service, including a \$1.5M per year contract with an identity services provider. During 2017 the IAM service reached one million logins per day. The NC Department of IT approached the SCI team in 2017, proposing the replacement of the State identity solution (NCID) with an expanded SCI IAM implementation.
5. Client Network Engineering (CNE) – MCNC provides CNE services under contract to NCDPI. LEAs and charter schools engage MCNC for high-level troubleshooting, network design consultation, and related training services. NCDPI also engages MCNC directly through the CNE contract to provide specific network and Cloud services management functions for LEAs

---

<sup>2</sup> A dozen NC LEAs connect schools via fiber that is owned and managed by either the school system or a community collaborative. SCI provides funding allotments to these districts based on actual maintenance costs.

<sup>3</sup> PRC 036 allotments are calculated based on the per ADM sum of CAT1 fiber connections and consortium Internet in the host county/LEA.

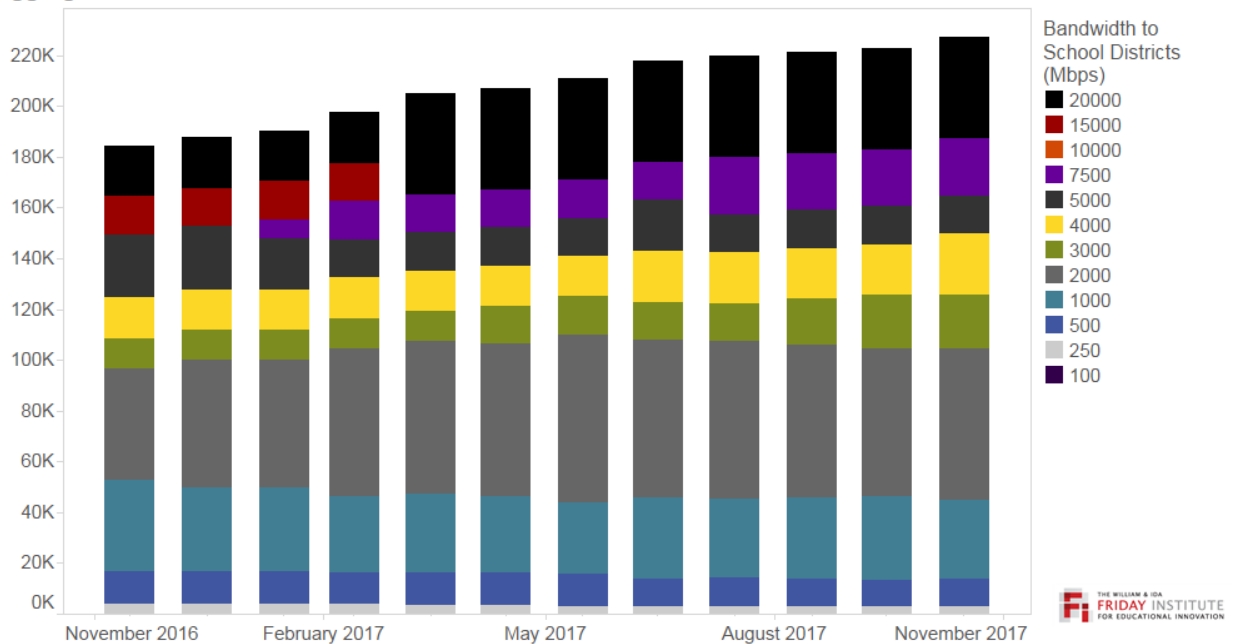
and charter schools. MCNC bills quarterly for actual hours serving districts and charter schools. The CNE contract allows for up to \$1.8M in billings for the 2017 fiscal year.

6. Program Administration – SCI program administration includes NCDPI school connectivity staff, Friday institute contract support, and related travel supplies and materials costs. Six NCDPI staff members provide technical consulting, E-rate training, and related SCI support at a combined salary expense of \$409,000<sup>4</sup>. A Friday Institute contract provides for planning, design, forecasting, modeling, and documentation support at an annual cost of \$215,000. It is notable that administrative costs associated with managing the SCI account for less than 2.9% of the \$31.2M State appropriation and only 1% of the \$88M total annual cost of services.

### Capacity and Usage Summary

Internet usage continues to grow as districts add more devices, allow students to bring their own devices, and employ more online resources for instruction. MCNC bills the State for Internet Bandwidth each month based on a contracted bandwidth level for each district and charter school. There are currently ten bandwidth levels in use ranging from 250 Mbps to 20,000 Mbps (i.e., 20 Gbps). As LEAs and charter schools exceed 60% usage measured against the bandwidth service level, the SCI team initiates upgrades to the next highest service level.

**Aggregate Contracted Bandwidth - School Districts**

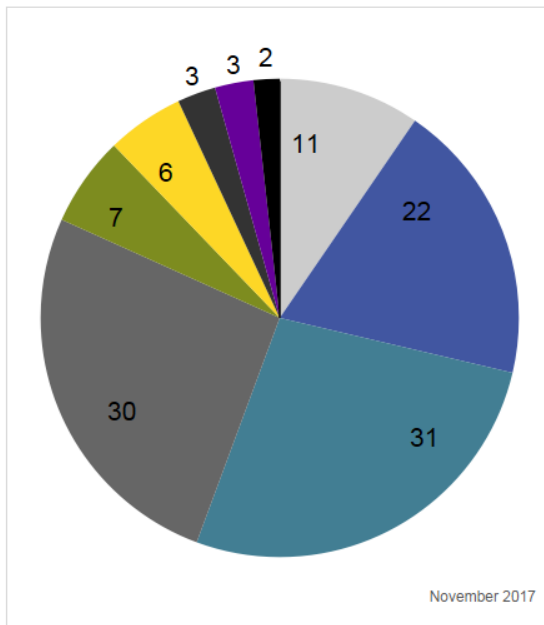


The chart above illustrates the CY2017 month-over-month growth in contracted Internet bandwidth. The monitoring and upgrade process ensures that schools have access to enough Internet capacity to support growth in devices and applications while at the same time protecting against expending funds for over-provisioning. Aggregate contracted bandwidth grew from 184 Gbps in November of

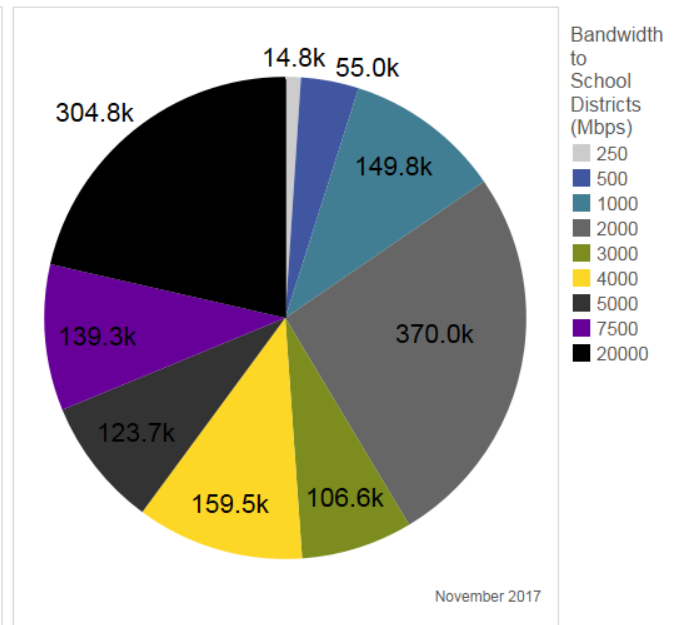
<sup>4</sup> SCI provisional language allows for up to 8 FTE and \$1M. See Appendix C – Connectivity Staff Salary Report for details.

2016 to over 227 Gbps in November of 2017. Each bar shows the bandwidth contribution in each of the ten service tiers. The SCI team regularly works with the service provider community to add new service tier options to accommodate growth as efficiently as possible. Note that during calendar year 2017, the SCI team eliminated 100 Mbps and 15 GBPS tiers and added 7.5 Gbps and 20 Gbps tiers. The SCI team manages the scheduling of upgrades to avoid adding new services and expense during the summer months. As illustrated in the chart below, only eleven LEAs remain at the lowest 250 Mbps service tier, while 82 LEAs enjoy at least 1000 Mbps (1 Gbps) of Internet capacity. The largest eight LEAs connect to NCREN via 5 Gbps, 7.5 Gbps, or 20 Gbps links and represent more than half of the students in the State.

**Contracted Bandwidth (Mbps)**  
(Count of School Districts)

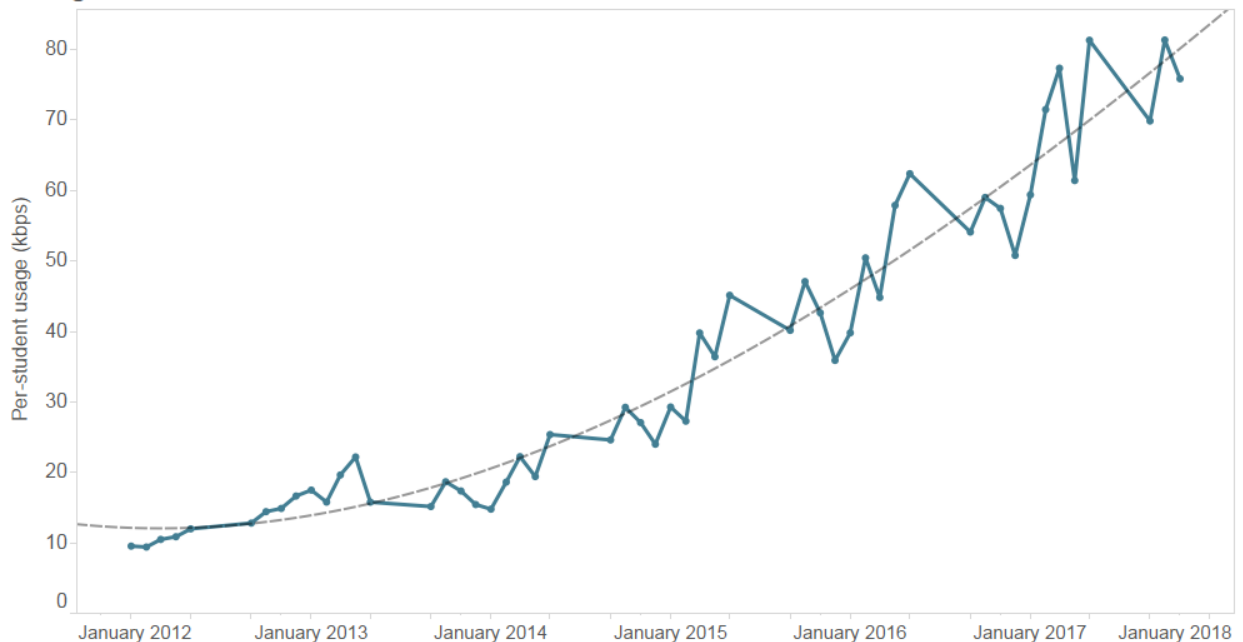


(Estimated Number of Students)



Aggregate bandwidth usage continued the trend of phenomenal year-over-year growth in calendar year 2017. All told, K12 is the largest single user of MCNC's NCREN backbone by a wide margin. MCNC's network continues to perform exceedingly well – maintaining high availability and low delay. Furthermore, MCNC peering, commodity offload, and caching solutions keep content close to the users and keep costs in check.

**Average Per-Student Utilization - School Districts**



The graph above plots average per-student utilization since 2012. In May 2012, the average per student utilization was 12 kilobits per second/student. In May 2017, the average per student utilization was 81 kilobits per second/student. The aggregate usage in May 2017 translates to 116 Gigabits per second. Another measure of usage is peak daily utilization which represents the aggregate peak day for each month – Again looking at May 2017 the aggregate peak day utilization was 144 Gbps. Tracking both peak and average informs decisions related to defining *enough* bandwidth and *enough* headroom.

### Internal Connections Summary

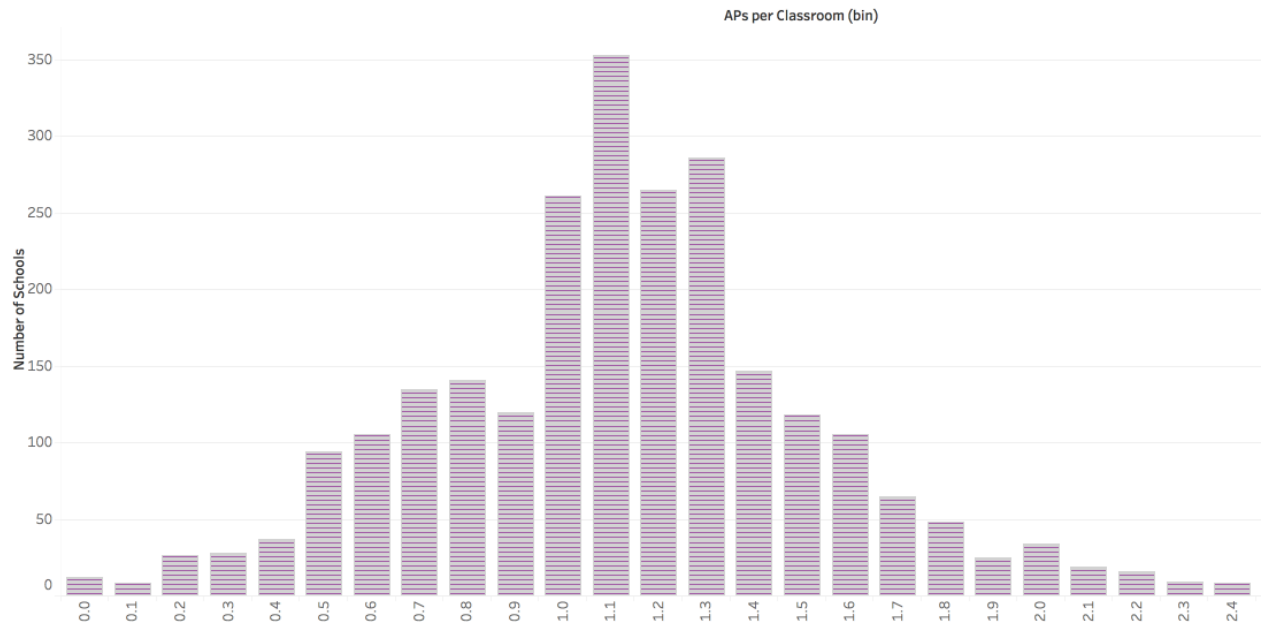
Session Law 2015-241 expanded SCI funding to support the sustainability of internal school connections – adding \$2M in 2015-16 and \$12M recurring in 2016-17. During 2015, the SCI team established a dozen contracts for wireless and wired network equipment and related services. In 2017 LEAs wrote purchase orders against these SCI contracts totaling over \$26M. The table below summarizes 2017 E-rate category 2 internal connections procurements by discount percentage. Most NC LEAs receive 80% discounts on E-rate eligible internal connections products and services – accounting for \$12M of the \$28M in 2017 procurements.

COMMITTED ONLY	Total Contract Cost	E-rate Funding Request	Number of LEAs/Charters	% of Total E-rate Commitments	% of LEAs
85 %	\$1,757,567	\$1,147,592	16	6.4%	19%
80 %	\$12,378,428	\$9,874,701	27	55.2%	32%
70 %	\$2,312,250	\$1,424,549	6	8.0%	7%

<b>60 %</b>	<b>\$5,389,043</b>	<b>\$2,080,110</b>	<b>11</b>	<b>11.6%</b>	<b>13%</b>
<b>50 %</b>	<b>\$6,105,926</b>	<b>\$3,052,963</b>	<b>7</b>	<b>17.1%</b>	<b>8%</b>
<b>40 %</b>	<b>\$812,705</b>	<b>\$325,082</b>	<b>17</b>	<b>1.8%</b>	<b>20%</b>
<b>Grand Total</b>	<b>\$28,755,919</b>	<b>\$17,904,998</b>	<b>84</b>		

With an investment of over \$42M in 2015 and \$55M in 2016, and \$26M in 2017, the SCI program has made substantial progress in the provision of digital-ready classrooms in NC public schools. According to the 2017 Digital Learning and Media Inventory (DLMI) data, 72% of NC schools report at least one wireless access point per classroom – one indicator of digital readiness. At the current upgrade and installation pace, the target is to have all NC schools at the one access point per classroom standard by June 30, 2018. It is notable that most charter schools responding to the DLMI survey report less than one access point per classroom. Due to variations in charter school facilities and class size, as compared to traditional public school counterparts, access point counts are a less reliable indicator of digital learning readiness. Moreover, tracking investments in infrastructure and services provides a limited view of readiness related to classroom access. There are many operational elements of internal school level infrastructure and services that are not easily measured in a comprehensive manner. It will be important to understand these operational considerations in order to have a more accurate picture of actual digital readiness.

AP:Classroom Ratio Histogram by Schools (APs of any age)



---

## CONSIDERATIONS FOR 2018

---

### Cybersecurity

Session Law 2017-57 Section 7.23A.(a) directs the Department of Public Instruction to expand school connectivity initiative client network engineering services to include cybersecurity and risk management services for public schools. The bill appropriates \$200,000 for each year of the 2017-19 biennium to implement:

1. continuous monitoring and risk assessment services;
2. security advisory and consulting services;
3. security training and education services.

NCDPI, along with client network engineering partner MCNC, has initiated the establishment of each of these cybersecurity services. During the first quarter of 2018 the SCI team will provide recommendations related to fully addressing the cybersecurity and risk management for public schools.

### Identity and Access Management

The NC Department of IT has initiated a project to modernize State level identity and access management services. NCDIT is interested in leveraging the NC Education Cloud IAM service and has engaged the Friday Institute to facilitate project planning. The SCI team will work with DIT and the Friday Institute to augment IAM services for schools as appropriate to take advantage of emerging State level support.

### Memorandum of Understanding

The SCI team will develop an updated MOU for LEAs and charter schools that reflects realities of the current regulatory environment, service provider marketplace, bandwidth usage trends, and State legislative priorities.

---

## SUPPORTING DOCUMENTATION

---

Friday Institute Comments to the FCC in the matter of modernizing the E-rate program for schools and libraries (WC Docket No. 13-1184) can be found at the link below:

<https://ecfsapi.fcc.gov/file/60001113428.pdf>

Data visualization for 2017 comments to the FCC can be found at the link below.

<https://public.tableau.com/profile/ray.zeisz#!/vizhome/FCCCAT2Data-V3-Extracted/Story1>

LEA and charter school connectivity allocation data can be found at the link below.

<http://www.dpi.state.nc.us/connectivity/links/funding/>

An interactive map that illustrates LEA and charter school aggregate and per student network utilization statistics can be found at the link below.

[https://www.mcnc.org/ncren/portal/reporting/ncren\\_utilization\\_map](https://www.mcnc.org/ncren/portal/reporting/ncren_utilization_map)

A data dashboard presenting connectivity usage data and related statistics can be found at the link below.

<http://friday.institute/scireport>

The balance of this report includes supporting data as follows.

APPENDIX	DATA
----------	------

A	2017 LEA PRC 073 allotments and shared services distributions
B	2017 PRC 036 charter school allotments and shared services distributions
D	The NCDPI connectivity staff salary report
E	North Carolina E-rate funding history report



## APPENDIX A - 2017 LEA PRC 073 ALLOTMENTS AND SHARED SERVICES DISTRIBUTIONS

The table below illustrates funding received by each LEA via PRC 073 allotment and funding applied to each LEA centrally for shared services – specifically, for Internet, content filtering, and firewall services. LEAs requested E-rate funds during spring of 2016 with service funding year between July 1, 2016 and June 30, 2017. PRC 073 allotments distributed during calendar year 2017 to cover non-E-rate costs for eligible school connections.

LEAs	PRC 073 Allotments		Shared Services Paid Centrally			LEA Total
	WAN	Wi-Fi	Internet	Filter	Firewall	
	\$ 8,587,270	\$ 12,288,575	\$ 14,287,015	\$ 3,208,217	\$ 1,129,197	\$ 39,500,274
Alamance-Burlington Schools	\$ 101,328	\$ 231,093	\$ 198,135	\$ 40,617	\$ 25,693	\$ 596,866
Alexander County Schools	\$ 32,372		\$ 96,627	\$ 18,927		\$ 147,926
Alleghany County Schools	\$ 17,412		\$ 31,125	\$ 7,461		\$ 55,998
Anson County Schools	\$ 19,890		\$ 62,224	\$ 13,851		\$ 95,965
Ashe County Schools	\$ 39,455		\$ 53,264	\$ 11,287	\$ 11,184	\$ 115,190
Asheboro City Schools	\$ 11,122		\$ 66,007	\$ 11,287	\$ 11,184	\$ 99,600
Asheville City Schools	\$ 49,694		\$ 63,020	\$ 11,287		\$ 124,001
Avery County Schools	\$ 18,120	\$ 55,237	\$ 58,590	\$ 12,594		\$ 144,541
Beaufort County Schools	\$ 39,943	\$ 41,872	\$ 82,486	\$ 18,338		\$ 182,639
Bertie County Schools	\$ 21,910	\$ 30,055	\$ 55,402	\$ 13,210	\$ 13,373	\$ 133,950
Bladen County Schools	\$ 50,667	\$ 23,325	\$ 184,983	\$ 34,311	\$ 14,532	\$ 307,818
Brunswick County Schools	\$ 78,977		\$ 82,653	\$ 18,927		\$ 180,557
Buncombe County Schools	\$ 106,920	\$ 224,934	\$ 181,455	\$ 34,207		\$ 547,516
Burke County Schools	\$ 88,607		\$ 181,455	\$ 34,207	\$ 14,532	\$ 318,801
Cabarrus County Schools	\$ 230,657	\$ 401,823	\$ 316,050	\$ 73,754	\$ 29,796	\$ 1,052,080
Caldwell County Schools	\$ 87,848	\$ 49,387	\$ 146,950	\$ 27,901	\$ 16,387	\$ 328,473
Camden County Schools	\$ 15,941	\$ 16,417	\$ 55,877	\$ 11,634	\$ 11,184	\$ 111,053
Carteret County Public Schools	\$ 121,344	\$ 513,162	\$ 96,627	\$ 18,927	\$ 11,184	\$ 761,244
Caswell County Schools	\$ 5,953		\$ 36,837	\$ 8,424	\$ 9,861	\$ 61,075
Catawba County Schools	\$ 100,224	\$ 139,656	\$ 182,895	\$ 34,311		\$ 457,086
Chapel Hill-Carrboro City Schools	\$ 44,100	\$ 131,753	\$ 149,428	\$ 34,207	\$ 14,532	\$ 374,020
Charlotte-Mecklenburg Schools	\$ 340,716	\$ 616,346	\$ 867,864	\$ 277,761		\$ 2,102,687
Chatham County Schools	\$ 29,698	\$ 43,437	\$ 131,063	\$ 24,055	\$ 16,108	\$ 244,361
Cherokee County Schools	\$ 26,827	\$ 1,418	\$ 116,623	\$ 11,287	\$ 11,184	\$ 167,339
Clay County Schools	\$ 10,800	\$ 14,237	\$ 94,461	\$ 7,461		\$ 126,959
Cleveland County Schools	\$ 50,220	\$ 124,826	\$ 103,427	\$ 24,055	\$ 15,550	\$ 318,078
Clinton City Schools	\$ 25,440	\$ 3,438	\$ 46,959	\$ 8,424	\$ 11,559	\$ 95,820
Columbus County Schools	\$ 33,456		\$ 68,944	\$ 15,774	\$ 13,373	\$ 131,547
Craven County Schools	\$ 23,058	\$ 245,600	\$ 115,287	\$ 26,619	\$ 16,108	\$ 426,672
Cumberland County Schools	\$ 269,444	\$ 89,597	\$ 351,292	\$ 85,394	\$ 36,062	\$ 831,789
Currituck County Schools	\$ 49,460		\$ 8,596	\$ 1,303	\$ 11,184	\$ 70,543
Dare County Schools	\$ 50,314		\$ 79,707	\$ 18,927	\$ 11,184	\$ 160,132
Davidson County Schools	\$ 221,633	\$ 192,605	\$ 135,999	\$ 26,619	\$ 18,156	\$ 595,012
Davie County Schools	\$ 12,400		\$ 106,857	\$ 18,673	\$ 13,373	\$ 151,303
Duplin County Schools	\$ 24,653		\$ 178,243	\$ 33,029	\$ 14,532	\$ 250,457
Durham Public Schools	\$ 179,119	\$ 716,900	\$ 173,931	\$ 34,207	\$ 14,532	\$ 1,118,689
Edenton-Chowan Schools	\$ 31,351	\$ 18,228	\$ 53,264	\$ 11,287	\$ 11,184	\$ 125,314
Edgecombe County Public	\$ 18,618		\$ 79,707	\$ 18,927	\$ 14,992	\$ 132,244

Schools						
Elizabeth City-Pasquotank Public Schools	\$ 48,791	\$ 8,271	\$ 79,707	\$ 18,927	\$ 11,184	\$ 166,880
Elkin City Schools	\$ 7,000		\$ 38,049	\$ 7,461		\$ 52,510
Franklin County Schools	\$ 54,827	\$ 211,979	\$ 86,711	\$ 17,056	\$ 13,373	\$ 383,946
Gaston County Schools	\$ 151,968	\$ 738,832	\$ 251,124	\$ 59,751		\$ 1,201,675
Gates County Schools	\$ 17,165		\$ 31,125	\$ 7,461	\$ 7,260	\$ 63,011
Graham County Schools	\$ 3,000		\$ 25,784	\$ 6,517	\$ 5,916	\$ 41,217
Granville County Schools	\$ 51,392		\$ 144,937	\$ 33,029	\$ 14,532	\$ 243,890
Greene County Schools	\$ 21,034	\$ 4,935	\$ 104,103	\$ 18,927	\$ 11,184	\$ 160,183
Guilford County Schools	\$ 416,400	\$ 1,322,036	\$ 299,084	\$ 73,754		\$ 2,111,274
Halifax County Schools	\$ 43,508		\$ 69,271	\$ 11,287		\$ 124,066
Harnett County Schools	\$ 183,291	\$ 292,364	\$ 189,746	\$ 36,771		\$ 702,172
Haywood County Schools	\$ 58,341		\$ 71,184	\$ 16,415		\$ 145,940
Henderson County Schools	\$ 57,360		\$ 141,595	\$ 33,335		\$ 232,290
Hertford County Schools	\$ 5,457		\$ 36,837	\$ 8,424	\$ 10,349	\$ 61,067
Hickory City Schools	\$ 49,236		\$ 53,966	\$ 11,287		\$ 114,489
Hoke County Schools	\$ 46,116		\$ 144,543	\$ 26,619	\$ 16,387	\$ 233,665
Hyde County Schools	\$ 3,094		\$ 31,125	\$ 7,461	\$ 7,260	\$ 48,940
Iredell-Statesville Schools	\$ 438,933	\$ 742,276	\$ 262,947	\$ 63,600	\$ 35,738	\$ 1,543,494
Jackson County Public Schools	\$ 17,700		\$ 68,944	\$ 15,774		\$ 102,418
Johnston County Schools	\$ 269,298	\$ 424,045	\$ 375,429	\$ 96,085	\$ 29,796	\$ 1,194,653
Jones County Schools	\$ 11,353		\$ 39,285	\$ 7,461	\$ 7,260	\$ 65,359
Kannapolis City Schools	\$ 22,618	\$ 5,697	\$ 96,627	\$ 18,927	\$ 11,184	\$ 155,053
Lee County Schools	\$ 63,118	\$ 7,213	\$ 149,428	\$ 34,207	\$ 14,532	\$ 268,498
Lenoir County Public Schools	\$ 44,618	\$ 42,525	\$ 223,857	\$ 50,873		\$ 361,873
Lexington City Schools	\$ 9,736	\$ 208,921	\$ 66,007	\$ 11,287	\$ 11,184	\$ 307,135
Lincoln County Schools	\$ 53,248		\$ 115,287	\$ 26,619	\$ 27,415	\$ 222,569
Macon County Schools	\$ 64,500		\$ 173,439	\$ 18,927		\$ 256,866
Madison County Schools	\$ 9,955		\$ 52,116	\$ 10,350	\$ 12,719	\$ 85,140
Martin County Schools	\$ 35,053	\$ 47,729	\$ 31,125	\$ 7,461	\$ 7,260	\$ 128,628
McDowell County Schools	\$ 42,828	\$ 51,572	\$ 78,682	\$ 18,927	\$ 14,713	\$ 206,722
Mitchell County Schools	\$ 14,421		\$ 63,020	\$ 11,287	\$ 6,524	\$ 95,252
Montgomery County Schools	\$ 16,908	\$ 25,293	\$ 89,844	\$ 15,774	\$ 11,509	\$ 159,328
Moore County Schools	\$ 89,770		\$ 173,931	\$ 34,207		\$ 297,908
Mooresville Graded School District	\$ 10,445	\$ 314,035	\$ 124,384	\$ 30,465	\$ 16,945	\$ 496,274
Mount Airy City Schools	\$ 17,138	\$ 2,196	\$ 53,264	\$ 11,287	\$ 11,184	\$ 95,069
Nash-Rocky Mount Schools	\$ 117,700	\$ 29,498	\$ 217,655	\$ 48,309	\$ 32,767	\$ 445,929
New Hanover County Schools	\$ 191,753	\$ 256,446	\$ 181,455	\$ 34,207		\$ 663,861
Newton Conover City Schools	\$ 7,312	\$ 451	\$ 63,020	\$ 11,287	\$ 11,184	\$ 93,254
Northampton County Schools	\$ 10,811		\$ 31,125	\$ 7,461	\$ 11,918	\$ 61,315
Onslow County Schools	\$ 315,479	\$ 76,065	\$ 149,428	\$ 34,207	\$ 14,532	\$ 589,711
Orange County Schools	\$ 70,656		\$ 93,637	\$ 17,697	\$ 13,373	\$ 195,363
Pamlico County Schools	\$ 10,000	\$ 8,431	\$ 39,285	\$ 7,461		\$ 65,177
Pender County Schools	\$ 73,404	\$ 86,988	\$ 96,627	\$ 18,927	\$ 1,864	\$ 277,810
Perquimans County Schools	\$ 20,284		\$ 53,264	\$ 11,287	\$ 11,184	\$ 96,019
Person County Schools	\$ 37,469	\$ 39,311	\$ 79,707	\$ 18,927	\$ 11,184	\$ 186,598
Pitt County Schools	\$ 172,440	\$ 134,666	\$ 238,906	\$ 63,600	\$ 29,796	\$ 639,408
Polk County Schools	\$ 10,706	\$ 38,717	\$ 52,069	\$ 10,671	\$ 13,700	\$ 125,863

Public Schools of Robeson County	\$ 50,358		\$ 181,455	\$ 34,207	\$ 14,532	\$ 280,552
Randolph County School System	\$ 105,981		\$ 193,139	\$ 24,055	\$ 16,108	\$ 339,283
Richmond County Schools	\$ 35,473	\$ 29,716	\$ 103,427	\$ 24,055	\$ 15,550	\$ 208,221
Roanoke Rapids City Schools	\$ 23,562	\$ 60,320	\$ 46,357	\$ 10,029	\$ 12,392	\$ 152,660
Rockingham County Schools	\$ 127,599		\$ 149,428	\$ 34,207	\$ 18,836	\$ 330,070
Rowan-Salisbury Schools	\$ 83,520	\$ 227,212	\$ 266,345	\$ 64,780		\$ 641,857
Rutherford County Schools	\$ 15,177		\$ 127,147	\$ 29,183	\$ 16,945	\$ 188,452
Sampson County Schools	\$ 31,458	\$ 69,595	\$ 89,844	\$ 15,774	\$ 13,373	\$ 220,044
Scotland County Schools	\$ 38,288		\$ 82,384	\$ 19,620	\$ 11,184	\$ 151,476
Stanly County Schools	\$ 85,710	\$ 125,379	\$ 96,627	\$ 18,927	\$ 7,903	\$ 334,546
Stokes County Schools	\$ 45,864	\$ 19,429	\$ 79,707	\$ 18,927		\$ 163,927
Surry County Schools	\$ 53,841	\$ 74,392	\$ 97,497	\$ 22,773	\$ 15,178	\$ 263,681
Swain County Schools	\$ 15,000	\$ 56,010	\$ 82,853	\$ 17,697		\$ 171,560
Thomasville City Schools	\$ 12,449	\$ 23,167	\$ 52,383	\$ 9,387		\$ 97,386
Transylvania County Schools	\$ 18,336	\$ 10,344	\$ 53,264	\$ 11,287	\$ 11,184	\$ 104,415
Tyrrell County Schools	\$ 3,000		\$ 31,125	\$ 7,461	\$ 7,260	\$ 48,846
Union County Public Schools	\$ 435,403	\$ 1,491,795	\$ 189,032	\$ 49,487		\$ 2,165,717
Vance County Schools	\$ 47,698	\$ 159,370	\$ 62,037	\$ 14,837	\$ 14,908	\$ 298,850
Wake County Schools	\$ 618,160	\$ 477,568	\$ 791,824	\$ 252,117		\$ 2,139,669
Warren County Schools	\$ 27,114	\$ 20,581	\$ 53,264	\$ 11,287	\$ 11,184	\$ 123,430
Washington County Schools	\$ 15,160		\$ 55,877	\$ 11,634		\$ 82,671
Watauga County Schools	\$ 65,160	\$ 120,618	\$ 53,264	\$ 11,287	\$ 11,184	\$ 261,513
Wayne County Public Schools	\$ 88,872	\$ 259,815	\$ 154,139	\$ 30,465	\$ 11,184	\$ 544,475
Weldon City Schools	\$ 8,682		\$ 22,388	\$ 5,941	\$ 7,883	\$ 44,894
Whiteville City Schools	\$ 5,000	\$ 15,732	\$ 53,264	\$ 11,287		\$ 85,283
Wilkes County Schools	\$ 22,380		\$ 104,103	\$ 18,927		\$ 145,410
Wilson County Schools	\$ 42,987		\$ 149,428	\$ 34,207	\$ 14,532	\$ 241,154
Winston Salem/Forsyth County Schools	\$ 233,040		\$ 310,662	\$ 72,472		\$ 616,174
Yadkin County Schools	\$ 48,201		\$ 96,627	\$ 18,927	\$ 11,184	\$ 174,939
Yancey County Schools	\$ 16,472	\$ 1,694	\$ 31,125	\$ 7,461	\$ 7,260	\$ 64,012

## APPENDIX B – 2017 CHARTER PRC 036 ALLOTMENTS AND SHARED SERVICES DISTRIBUTIONS

Charter schools may choose to receive a centrally funded Internet connection or a PRC 036 allotment that is calculated based on the SCI per ADM benefit to their home LEA. These are the 2016 PRC 036 allotments for participating charter schools.

Charter Schools	PRC 036 Allotments		Shared Services Paid Centrally			Charter Total
	WAN	WiFi	Internet	Filter	Firewall	
	\$ 56,660	\$ 364,673	\$ 2,325,386	\$ 389,135	\$ 660,563	\$ 3,796,417
A.C.E. Academy			\$ 10,827	\$ 1,820	\$ 5,916	\$ 18,563
Alpha Academy			\$ 5,000			\$ 5,000
American Renaissance School	\$ 5,640		\$ 32,428	\$ 6,709	\$ 5,916	\$ 50,693
Anderson Creek Club Charter School			\$ 5,184	\$ 828		\$ 6,012
Arapahoe Charter School			\$ 13,488	\$ 2,147		\$ 15,635
Aristotle Preparatory Academy			\$ 9,491	\$ 1,656	\$ 5,916	\$ 17,063
ArtSpace Charter		\$ 10,235	\$ 13,116	\$ 2,147	\$ 5,916	\$ 31,414
Bear Grass Charter School		\$ 5,142	\$ 31,965	\$ 6,517	\$ 8,331	\$ 51,955
Bethany Community Middle School			\$ 5,000			\$ 5,000
Bethel Hill Charter		\$ 4,760	\$ 9,767	\$ 1,656	\$ 5,916	\$ 22,099
Bradford Preparatory School			\$ 18,818	\$ 4,442		\$ 23,260
Brevard Academy			\$ 105,806	\$ 2,025	\$ 7,323	\$ 115,154
Bridges Academy	\$ 88		\$ 9,767	\$ 1,656	\$ 5,916	\$ 17,427
Cabarrus Charter Academy			\$ 5,000			\$ 5,000
Cape Fear Center for Inquiry		\$ 13,204	\$ 13,116	\$ 2,147	\$ 7,816	\$ 36,283
Cardinal Charter Academy			\$ 5,000			\$ 5,000
Carolina International School			\$ 20,548	\$ 5,173		\$ 25,721
Carter Community Charter		\$ 226	\$ 3,697	\$ 13,613		\$ 17,536
Carter G Woodson School			\$ 13,116	\$ 2,147	\$ 5,916	\$ 21,179
Casa Esperanza Montessori		\$ 6,002	\$ 13,116	\$ 2,147	\$ 5,916	\$ 27,181
Central Park School For Children	\$ 5,508	\$ 23,572	\$ 11,829	\$ 1,943	\$ 5,916	\$ 48,768
Central Wake Charter High School	\$ 1,800		\$ 9,269	\$ 1,794		\$ 12,863
Charlotte Choice Charter	\$ 6,336		\$ 9,687	\$ 1,820	\$ 5,916	\$ 23,759
Charlotte Lab School			\$ 10,986	\$ 1,943	\$ 5,916	\$ 18,845
Charlotte Learning Academy			\$ 8,821	\$ 1,738	\$ 5,916	\$ 16,475
Charlotte Secondary School			\$ 19,252	\$ 5,173	\$ 5,916	\$ 30,341
Charlotte Community Charter			\$ 6,498	\$ 1,488	\$ 5,916	\$ 13,902
Charter Day School			\$ 14,148	\$ 2,657	\$ 5,916	\$ 22,721
Chatham Charter			\$ 21,269	\$ 5,173	\$ 5,916	\$ 32,358
Children's Village Academy			\$ 17,748	\$ 3,406		\$ 21,154
CIS Academy			\$ 13,792	\$ 1,242	\$ 6,830	\$ 21,864
Clover Garden			\$ 9,023	\$ 2,308		\$ 11,331
Columbus Charter School			\$ 11,754	\$ 1,983	\$ 5,916	\$ 19,653
Commonwealth High School			\$ 13,116	\$ 2,147		\$ 15,263
Community School of Davidson			\$ 19,252	\$ 5,173	\$ 5,916	\$ 30,341
Cornerstone Charter Academy			\$ 15,180	\$ 3,167	\$ 5,916	\$ 24,263
Corvian Community School		\$ 6,586	\$ 11,419	\$ 2,025	\$ 3,516	\$ 23,546
Crosscreek Charter School			\$ 5,000			\$ 5,000

Crossroads Academy			\$ 510	\$ 178	\$ 493	\$ 1,181
Dillard Academy Charter School			\$ 5,000			\$ 5,000
Douglass Academy			\$ 13,350	\$ 1,488	\$ 3,516	\$ 18,354
East Wake Academy			\$ 42,756	\$ 7,477	\$ 7,260	\$ 57,493
Eastern NC School for the Deaf			\$ 16,440	\$ 4,187		\$ 20,627
Endeavor Charter		\$ 6,302	\$ 11,852	\$ 2,025	\$ 5,916	\$ 26,095
Envision Science Academy	\$ 3,222		\$ 14,148	\$ 2,657	\$ 5,916	\$ 25,943
Evergreen Community Charter			\$ 13,116	\$ 2,147		\$ 15,263
Excelsior Classical Academy			\$ 9,491	\$ 1,656	\$ 5,916	\$ 17,063
Falls Lake Academy	\$ 1,525		\$ 19,662	\$ 3,682		\$ 24,869
FernLeaf Community Charter School		\$ 16,128	\$ 6,417	\$ 1,380	\$ 6,830	\$ 30,755
Forsyth Academy			\$ 5,000			\$ 5,000
Francine Delany New School			\$ 6,782	\$ 1,516		\$ 8,298
Gaston College Preparatory			\$ 5,000			\$ 5,000
Gate City Charter Academy			\$ 5,000			\$ 5,000
Girls Leadership Academy of Wilmington		\$ 2,066	\$ 8,307	\$ 1,242	\$ 6,830	\$ 18,445
Global Scholars Academy			\$ 14,653	\$ 2,657	\$ 16,067	\$ 33,377
Gov. Morehead School for Blind			\$ 13,116	\$ 2,147	\$ 5,916	\$ 21,179
Grandfather Academy			\$ 5,000			\$ 5,000
Gray Stone Day School			\$ 23,863	\$ 4,382	\$ 8,107	\$ 36,352
Greensboro Academy			\$ 5,000			\$ 5,000
Guilford Preparatory Academy	\$ 3,094		\$ 7,955	\$ 1,656	\$ 5,916	\$ 18,621
Haliwa-Saponi Tribal School			\$ 12,584	\$ 2,025	\$ 5,916	\$ 20,525
Healthy Start Academy			\$ 14,653	\$ 2,657	\$ 5,916	\$ 23,226
Henderson Collegiate		\$ 2,452	\$ 12,584	\$ 2,025	\$ 5,916	\$ 22,977
Heritage Collegiate Leadership Academy	\$ 1,260		\$ 13,488	\$ 2,147	\$ 5,916	\$ 22,811
Hope Charter Leadership Academy			\$ 5,000		\$ 2,393	\$ 7,393
Ignite Innovation Academy - Pitt			\$ 5,000			\$ 5,000
Invest Collegiate (Buncombe)	\$ 1,800		\$ 11,852	\$ 2,025		\$ 15,677
Invest Collegiate Transform (Meck)			\$ 5,000			\$ 5,000
Iredell Charter Academy			\$ 5,000			\$ 5,000
Island Montessori Charter	\$ 5		\$ 7,776	\$ 1,614	\$ 5,916	\$ 15,311
Kannapolis Charter Academy			\$ 5,000			\$ 5,000
Kestrel Heights School			\$ 32,973	\$ 6,133	\$ 8,107	\$ 47,213
KIPP Charlotte	\$ 708					\$ 708
KIPP Durham College Preparatory	\$ 3,907		\$ 13,116	\$ 2,147	\$ 6,409	\$ 25,579
KIPP Halifax College Preparatory	\$ 5,177	\$ 27,086	\$ 9,491	\$ 1,656	\$ 5,916	\$ 49,326
Lake Lure Classical Academy			\$ 12,794	\$ 2,147	\$ 5,916	\$ 20,857
Lake Norman Charter			\$ 63,020	\$ 11,287		\$ 74,307
Langtree Charter Academy			\$ 5,000			\$ 5,000
Lincoln Charter School	\$ 6,163		\$ 37,437	\$ 7,461	\$ 7,260	\$ 58,321
Longleaf School of the Arts		\$ 23,645	\$ 4,991	\$ 966		\$ 29,602
Magellan Charter			\$ 10,120	\$ 1,861	\$ 5,916	\$ 17,897
Mallard Creek STEM Academy			\$ 11,570	\$ 1,186	\$ 5,844	\$ 18,600
Marjorie Williams Academy			\$ 5,000			\$ 5,000
Matthews Charter Academy			\$ 5,000			\$ 5,000
Maureen Joy Charter School			\$ 5,000			\$ 5,000

Metrolina Regional Scholars Academy		\$ 16,358	\$ 13,116	\$ 2,147	\$ 5,916	\$ 37,537
Millennium Charter Academy			\$ 5,000			\$ 5,000
Mountain Discovery Charter School			\$ 9,162	\$ 1,488	\$ 3,516	\$ 14,166
Mountain Island Charter			\$ 37,437	\$ 7,461	\$ 7,260	\$ 52,158
Neuse Charter School			\$ 28,909	\$ 6,133	\$ 8,219	\$ 43,261
North Carolina Connections Academy			\$ 5,000			\$ 5,000
North Carolina School for Deaf			\$ 21,024	\$ 2,922	\$ 2,393	\$ 26,339
North East Carolina Preparatory School			\$ 18,059	\$ 3,932		\$ 21,991
Northeast Academy of Aerospace & AdvTech		\$ 4,725	\$ 13,488	\$ 2,147	\$ 5,916	\$ 26,276
Northeast Regional School - Biotech//Agri			\$ 18,488	\$ 2,147	\$ 5,916	\$ 26,551
Orange Charter			\$ 10,393	\$ 1,738	\$ 5,916	\$ 18,047
Oxford Preparatory High School			\$ 7,722	\$ 1,488	\$ 3,516	\$ 12,726
Paul R Brown Leadership Academy			\$ 5,000			\$ 5,000
PAVE Southeast Raleigh Charter School			\$ 7,955	\$ 1,656	\$ 5,916	\$ 15,527
Phoenix Academy Inc			\$ 5,000			\$ 5,000
Piedmont Classical High School			\$ 9,491	\$ 1,656	\$ 7,323	\$ 18,470
Piedmont Community Charter		\$ 20,673	\$ 38,049	\$ 7,461	\$ 7,260	\$ 73,443
Pine Lake Preparatory			\$ 37,437	\$ 7,461	\$ 10,103	\$ 55,001
Pinnacle Classical Academy			\$ 5,000			\$ 5,000
Pioneer Springs Community School			\$ 7,843	\$ 1,518	\$ 5,916	\$ 15,277
PreEminent Charter School			\$ 5,000			\$ 5,000
Quality Education Academy			\$ 14,148	\$ 2,657	\$ 5,916	\$ 22,721
Queen City STEM School			\$ 11,307	\$ 1,805	\$ 6,337	\$ 19,449
Queens Grant Community School			\$ 16,177	\$ 3,948	\$ 5,916	\$ 26,041
Quest Academy			\$ 5,000			\$ 5,000
Raleigh Charter High School			\$ 13,116	\$ 2,147	\$ 4,365	\$ 19,628
Reaching All Minds Academy		\$ 1,349	\$ 10,933	\$ 1,794	\$ 5,916	\$ 19,992
Research Triangle Charter Academy			\$ 5,000			\$ 5,000
Research Triangle High School		\$ 9,211	\$ 47,605	\$ 8,745	\$ 11,084	\$ 76,645
River Mill Academy			\$ 13,463	\$ 2,147	\$ 3,872	\$ 19,482
Rocky Mount Preparatory			\$ 39,285	\$ 7,461	\$ 7,260	\$ 54,006
Roxboro Community School		\$ 16,257	\$ 39,285	\$ 7,461	\$ 7,260	\$ 70,263
Sallie B Howard School for the Arts and Education			\$ 5,000			\$ 5,000
Sandhills Theatre Arts Renaissance School			\$ 5,000			\$ 5,000
SEGS Academy					\$ (509)	\$ (509)
Shining Rock Classical Academy: CFA			\$ 8,622	\$ 1,723	\$ 6,830	\$ 17,175
Socrates Academy		\$ 10,584	\$ 13,463	\$ 2,147	\$ 5,916	\$ 32,110
South Brunswick Charter School			\$ 7,955	\$ 1,656	\$ 5,916	\$ 15,527
Southeastern Academy			\$ 13,116	\$ 2,147	\$ 5,916	\$ 21,179
Southern Wake Academy			\$ 17,781	\$ 3,892	\$ 5,916	\$ 27,589
Sterling Montessori Academy			\$ 13,116	\$ 2,147	\$ 5,916	\$ 21,179
Stewart Creek High School			\$ 7,955	\$ 1,656		\$ 9,611
Success Charter School			\$ 6,498	\$ 1,488	\$ 3,516	\$ 11,502

Sugar Creek Charter	\$ 3,348	\$ 6,912	\$ 37,437	\$ 7,461	\$ 7,260	\$ 62,418
Summerfield Charter Academy			\$ 5,000			\$ 5,000
Summit Charter School			\$ 5,000			\$ 5,000
The Academy of Moore County			\$ 15,092	\$ 1,656	\$ 7,816	\$ 24,564
The Arts Based School			\$ 5,000			\$ 5,000
The Capitol Encore Academy			\$ 11,019	\$ 1,820		\$ 12,839
The College Preparatory and Leadership Academy			\$ 37,296	\$ 1,861	\$ 7,323	\$ 46,480
The Expedition School	\$ 1,800		\$ 4,524	\$ 496		\$ 6,820
The Exploris School		\$ 7,329	\$ 13,116	\$ 2,147	\$ 5,916	\$ 28,508
The Franklin School of Innovation			\$ 23,832	\$ 4,442	\$ 5,916	\$ 34,190
The Hawbridge School			\$ 15,696	\$ 3,422	\$ 7,323	\$ 26,441
The Inst. for the Dev. Young Leaders			\$ 8,643	\$ 1,586	\$ 6,116	\$ 16,345
The Learning Center			\$ 5,000			\$ 5,000
The Mountain Community School			\$ 18,116	\$ 2,189	\$ 5,916	\$ 26,221
The New Dimensions School			\$ 13,116	\$ 2,147	\$ 5,916	\$ 21,179
The North Carolina Leadership Academy			\$ 17,760	\$ 4,442	\$ 5,916	\$ 28,118
Thomas Academy			\$ 5,000			\$ 5,000
Thomas Jefferson Classical Academy			\$ 19,252	\$ 5,173	\$ 5,916	\$ 30,341
Thunderbird Preparatory School			\$ 13,116	\$ 2,147	\$ 5,916	\$ 21,179
Tiller School			\$ 5,000			\$ 5,000
Torchlight Academy			\$ 13,116	\$ 2,147	\$ 5,916	\$ 21,179
Triad Math and Science Academy	\$ 2,700		\$ 16,098	\$ 4,442	\$ 7,659	\$ 30,899
Triangle Math and Science Academy			\$ 17,188	\$ 4,442	\$ 7,659	\$ 29,289
Two Rivers Community School			\$ 13,116	\$ 2,147	\$ 5,916	\$ 21,179
Union Academy Charter School			\$ 20,548	\$ 5,173	\$ 5,916	\$ 31,637
Union Day School			\$ 5,000			\$ 5,000
Union Preparatory Academy at Indian Trail			\$ 5,000			\$ 5,000
United Community School			\$ 7,955	\$ 1,656	\$ 5,916	\$ 15,527
Uwharrie Charter Academy			\$ 13,488	\$ 2,147	\$ 5,916	\$ 21,551
Vance Charter School		\$ 32,232	\$ 6,048	\$ 1,529		\$ 39,809
VERITAS Community School			\$ 7,843	\$ 1,518	\$ 7,816	\$ 17,177
Voyager Academy		\$ 91,637	\$ 42,827	\$ 8,103	\$ 10,430	\$ 152,997
Wake Forest Charter Academy			\$ 5,000			\$ 5,000
Washington Montessori			\$ 12,584	\$ 2,025		\$ 14,609
Water's Edge Village School			\$ 7,722	\$ 1,488	\$ 5,916	\$ 15,126
Wayne Preparatory			\$ 13,116	\$ 2,147	\$ 5,916	\$ 21,179
Williams Academy			\$ 13,116	\$ 2,147	\$ 5,916	\$ 21,179
Willow Oak Montessori			\$ 7,110	\$ 1,488	\$ 5,916	\$ 14,514
Wilmington Preparatory Academy			\$ 5,000			\$ 5,000
Wilson Preparatory Academy	\$ 2,092		\$ 19,365	\$ 4,442		\$ 25,899
Winterville Charter Academy			\$ 5,000			\$ 5,000
Woods Charter School			\$ 15,180	\$ 3,167	\$ 5,916	\$ 24,263
Youngsville Academy			\$ 5,000			\$ 5,000
Z.E.C.A. School of Arts and Technology	\$ 487		\$ 10,393	\$ 1,738	\$ 5,916	\$ 18,534

---

## APPENDIX C - CONNECTIVITY STAFF SALARY REPORT

---

The following are NCDPI staff paid from School Connectivity Initiative funding and their respective salaries.

<b>Title of Position and Description of Duties</b>	<b>Salary</b>
<b>Lead Connectivity and E-Rate Analyst:</b> provides LEA/Charter School Technical Consulting, Strategic Planning, Project Management	\$87,943
<b>Lead E-Rate Analyst:</b> provides LEA/Charter School Technical Consulting, Strategic Planning	\$76,506
<b>E-Rate Program Administrator:</b> provides E-rate Education and Consultation Services	\$72,726
<b>E-Rate Program Administrator:</b> provides E-rate Education and Consultation Services	\$64,265
<b>Education Consultant II:</b> Assists with Digital Teaching and Learning Integration	\$67,420
<b>Technology Support Center Analyst:</b> Provides help desk support for SCI related calls	\$40,662
<b>Total</b>	<b>\$409,522</b>



## APPENDIX D – NORTH CAROLINA E-RATE FUNDING HISTORY REPORT

The following report run in December 2017 shows North Carolina public school E-rate funding requests, the total pre-discount amount for all requested services, the amount of E-rate funding being requested, the amount of funding ultimately committed by the FCC, the amount of funding disbursed, and the utilization of funds (disbursed/committed). Note that there are still disbursements outstanding for 2016. For 2017, the majority of requests have been approved though the expectation is that on the order of 95% of what is requested will be committed.

Year	Requests	Pre-Discount	Requested	Committed	Disbursed	Utilization %
2017	1,050	\$94,425,444	\$63,066,476	\$48,958,076	\$7,372,296	15%
2016	1,409	\$143,244,742	\$101,743,957	\$97,329,343	\$82,783,271	85%
2015	1,828	\$148,391,971	\$112,448,974	\$107,747,771	\$103,073,929	96%
2014	1,170	\$130,569,310	\$103,776,157	\$68,598,967	\$60,514,210	88%
2013	1,108	\$128,365,669	\$103,194,369	\$67,470,997	\$60,549,623	90%
2012	1,153	\$141,222,995	\$112,992,758	\$80,285,729	\$71,645,430	89%
2011	1,297	\$129,276,499	\$103,538,353	\$71,542,675	\$63,982,915	89%
2010	1,272	\$109,844,062	\$86,202,227	\$77,967,821	\$66,523,395	85%
2009	1,180	\$98,564,976	\$75,486,810	\$59,950,326	\$52,274,923	87%
2008	1,269	\$91,853,896	\$70,357,708	\$54,952,769	\$50,540,986	92%
2007	1,733	\$100,873,061	\$77,535,432	\$56,392,223	\$49,861,383	88%
2006	1,411	\$110,422,492	\$85,481,072	\$47,191,490	\$40,370,952	86%
2005	2,359	\$96,225,151	\$72,072,864	\$50,621,363	\$43,984,441	87%
2004	2,294	\$78,681,640	\$57,991,959	\$37,480,433	\$30,336,639	81%
2003	2,076	\$97,322,227	\$75,814,000	\$45,339,691	\$37,042,927	82%
2002	1,952	\$79,865,118	\$62,473,202	\$48,117,223	\$39,646,446	82%
2001	2,223	\$61,576,928	\$44,222,112	\$20,166,017	\$16,038,416	80%
2000	2,217	\$60,099,851	\$41,708,939	\$20,915,884	\$17,740,889	85%
1999	1,845	\$48,447,701	\$33,670,538	\$28,605,610	\$24,649,511	86%
1998	3,041	\$44,388,023	\$28,969,621	\$21,511,196	\$17,384,524	81%
	<b>33,887</b>	<b>\$1,993,661,758</b>	<b>\$1,512,747,525</b>	<b>\$1,111,145,603</b>	<b>\$936,317,105</b>	