



**Public Schools of North Carolina**  
State Board of Education  
Department of Public Instruction

---

# **Report to the North Carolina General Assembly**

---

School Connectivity Initiative

*SL 2007-323 (HB 1473), SECTION 7.28.(d)*

---

**Date Due: January 15, 2019**

Report # 67

DPI Chronological Schedule, 2018-2019

**Submitted by the State Board of Education.**

## STATE BOARD OF EDUCATION

**SBE VISION:** Every public school student will graduate ready for post-secondary education and work, prepared to be a globally engaged and productive citizen through access to needed resources and rigor.

**SBE MISSION:** The State Board of Education will use its constitutional authority to lead and uphold the system of public education in North Carolina that guarantees every student in this state an opportunity to receive a sound basic education.

**ERIC DAVIS**

Chair: Charlotte – At-Large

**JILL CAMNITZ**

Greenville – Northeast Region

**TODD CHASTEEN**

Blowing Rock – Northwest Region

**ALAN DUNCAN**

Vice Chair: Greensboro – Piedmont-Triad Region

**REGINALD KENAN**

Rose Hill – Southeast Region

**WAYNE MCDEVITT**

Asheville – Western Region

**DAN FOREST**

Lieutenant Governor: Raleigh – Ex Officio

**AMY WHITE**

Garner – North Central Region

**PATRICIA N. WILLOUGHBY**

Raleigh – At-Large

**DALE FOLWELL**

State Treasurer: Raleigh – Ex Officio

**OLIVIA OXENDINE**

Lumberton – Sandhills Region

**J.B. BUXTON**

Raleigh – At-Large

**MARK JOHNSON**

Secretary to the Board: Raleigh

**JAMES FORD**

Charlotte – Southwest Region

## NC DEPARTMENT OF PUBLIC INSTRUCTION

**Mark Johnson, State Superintendent :: 301 N. Wilmington Street :: Raleigh, North Carolina 27601-2825**

In compliance with federal law, the NC Department of Public Instruction administers all state-operated educational programs, employment activities and admissions without discrimination because of race, religion, national or ethnic origin, color, age, military service, disability, or gender, except where exemption is appropriate and allowed by law.

**Inquiries or complaints regarding discrimination issues should be directed to:**

Maria Pitre-Martin, Ph.D., Deputy Superintendent of District Support

6307 Mail Service Center, Raleigh, NC 27699-6307 / Phone: (919) 807-3759 / Fax: (919) 807-4065

**Visit us on the Web:** [www.ncpublicschools.org](http://www.ncpublicschools.org)

# **SCHOOL CONNECTIVITY INITIATIVE**

## **Legislative Update**

---

*Submitted to:*

Joint Legislative Oversight Committee on Information Technology  
Joint Legislative Education Oversight Committee  
Office of State Budget and Management  
State Chief Information Officer  
Fiscal Research Division

*Prepared by*

Connectivity and E-rate Services Section  
Technology Services Area  
North Carolina Department of Public Instruction  
Supported by *The Friday Institute at NC State University*

---

---

## FOREWORD

---

The School Connectivity Initiative (SCI) was created by *Session Law 2007-323 SECTION 7.28.(d)* as follows:

*SECTION 7.28.(b) As recommended in the Joint Report on Information Technology, February 2007, the State Board of Education shall contract with an entity that has the capacity of serving as the administrator of the School Connectivity Initiative and has demonstrated success in providing network services to education institutions in the State. The funds appropriated in this act shall be used to implement a plan approved by the State Board of Education to enhance the technology infrastructure for public schools that supports teaching and learning in the classrooms. The plan shall include the following components:*

- (1) A business plan with timelines, clearly defined outcomes and an operational model including a governance structure, personnel, E-rate reimbursement, support services to LEA's and schools and budget;*
- (2) Assurances for a fair and open bidding and contracting process;*
- (3) Technology assessment site survey template;*
- (4) Documentation of how the technology will be used to enhance teaching in learning;*
- (5) Documentation of how existing State-invested funds for technology are maximized to implement the school connectivity initiative;*
- (6) The number, location and schedule of sites to be served in 2007-2008 and in 2008-2009; and*
- (7) Assurances that local school administrative units will upgrade internal networks in schools, provide technology tools, and support for teachers and students to use technology to improve teaching and learning.*

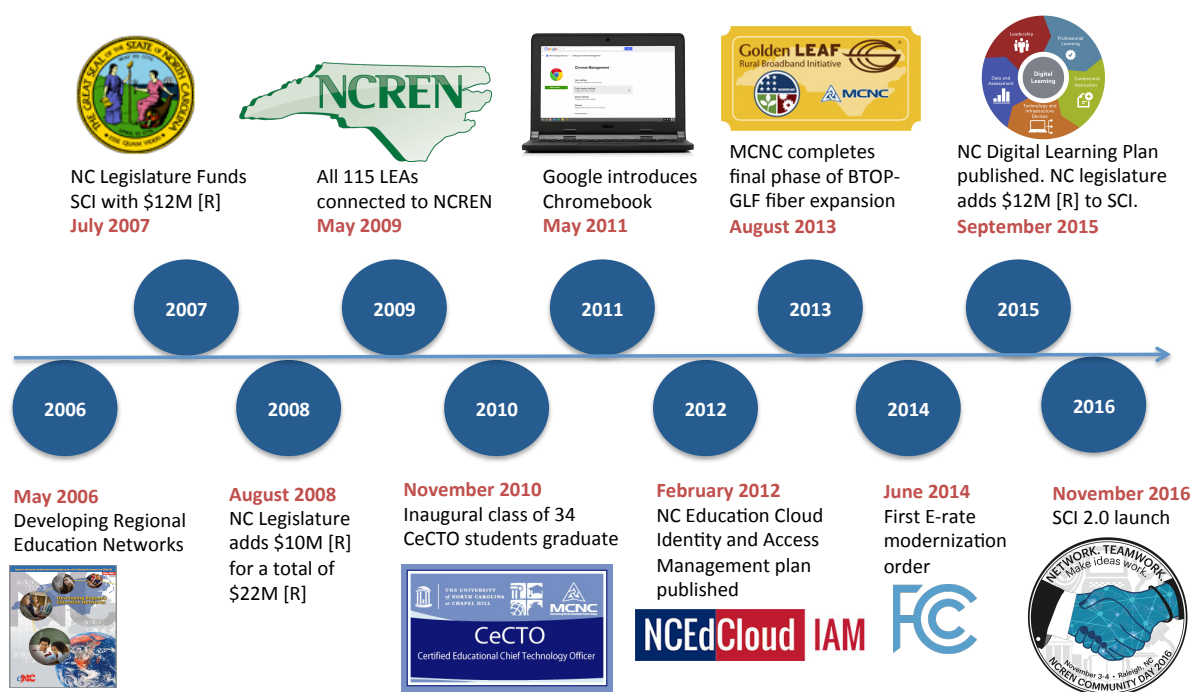
The NC State Board of Education approved the School Connectivity Initiative *Implementation and Operating Plan* on Thursday, August 2, 2007. The SCI program was managed through the NC ITS Enterprise Project Management Office supervising projects that gained initial EPMO approval in September 2007. Within the *Implementation and Operating Plan* were the following deliverables, all of which were completed in 2009:

- All 115 Local Education Agencies (LEAs) connected to MCNC's North Carolina Research and Education Network (NCREN)
- Establishment of Client Network Engineering Services for LEAs
- Establishment of E-rate Filing Assistance Bureau
- Development of a Technology Master Plan
- Development of Governance and Funding Plans

Each year since the inception of the SCI program, the State Board of Education and the Department of Public Instruction produces a School Connectivity Initiative Report that summarizes the fiscal and functional performance of the program and provides insights into the work of the coming year.

## BACKGROUND

The School Connectivity Initiative launched in earnest with the publication of the *Developing Regional Education Networks* report in May 2006. In the twelve years since the inception of the SCI program, NC public schools have procured over \$1B in network services and infrastructure with State appropriations over \$247M leveraged against \$773M in federal communications commission (FCC) E-rate discount funding. During the twelve-year stretch, the telecommunications and computing markets have shifted dramatically, the regulatory environment has been in near constant flux, and the NC legislature has called for and invested in a digital transition in public schools. Perhaps most impressively, NC public schools contracted Internet usage has grown from about 1000 Megabits per second (Mbps) in 2009 to over 290,000 Megabits per second at the writing of this report – with a similar growth forecast for the foreseeable future.



As illustrated by the timeline above, the SCI program has exhibited extraordinary productivity and opportunistic adaptability over its twelve-year history. Just a few highlights include: connecting all LEAs to the NC Research and Education Network using an opt-in approach; establishing the Certified Educational Chief Technology Officer (CeCTO) training program; developing, designing and implementing the NCEdCloud identity and access management (IAM) service; partnering with MCNC and the Golden Leaf Foundation to bring competitive fiber connectivity to rural NC schools and libraries; and, adapting to the NC Digital Learning Plan, the FCC E-rate modernization order, and the growth of 1:1 programs fueled by the release of inexpensive computing devices. While the SCI team has accomplished much in its first decade, the team continues to adapt and innovate.

## Draft Pending Approval

The balance of this report provides a summary of 2018 accomplishments, a financial summary, capacity and usage summary, considerations for 2019, and appendices containing detailed supporting data.

---

## EXECUTIVE SUMMARY

---

The School Connectivity Initiative (SCI) continues to deliver high quality Internet access, client network engineering, identity and cybersecurity services, E-rate support and funding that benefit all NC public schools. Pursuant to the Appropriations Act of 2015 (S.L. 2015-241), the 2017-18 SCI budget is \$31.2M. Major calendar year 2018 SCI accomplishments include:

- Upgraded Internet access to 25 LEAs and 21 charter schools – adding over 46 Gbps of aggregate Internet capacity;
- Connected 12 new charter schools to the NC Research and Education Network (NCREN);
- Provided firewall services to 77 LEAs and 112 charter schools<sup>1</sup>;
- Provided web security (Internet filtering) services to 89 LEAs and 118 charter schools<sup>2</sup>;
- Supported 54 LEAs and 57 charter schools with client network engineering (CNE) support services, through 165 total CNE engagements (86 LEA and 79 charter school);
- Conducted a CompTIA Security+ certification training course for public K-12 network administrators (24 participants) in 2018 that provided foundational knowledge regarding best practices in IT security and risk management.

### FCC Chairman Pai Visits Graham Highschool

In May 2018, the FCC Chairman Ajit Pai visited Graham High School in Alamance to recognize North Carolina's recent technological achievement. Our state was the first to provide broadband access in every single classroom. "As we enter a digital economy we want our students to be able have the tools necessary to compete and, increasingly, that means access to the internet," Pai said. Joining Pai was Lt. Gov. Dan Forest; State Superintendent Mark Johnson; Alamance-Burlington Superintendent William Harrison; Rep. Stephen Ross, R-Alamance; Sen. Rick Gunn, R-Alamance, and Rep. Dennis Riddell, R-Alamance.

### Client Network Engineering Team Recognized by NCTIES

The North Carolina Technology in Education Society (NCTIES) recognized Dave Furiness of MCNC and the Client Network Engineering (CNE) team that he leads with a *Making IT Happen* award at that annual NCTIES conference in March 2018 hosted at the Raleigh Convention Center.

---

<sup>1</sup> Includes education services for the deaf and blind (ESDB) schools in Raleigh, Wilson, and Morganton.

<sup>2</sup> Includes ESDB schools in Raleigh, Wilson, and Morganton.

---

**PERFORMANCE OVERVIEW**


---

**Financial Summary**

For 2018 the School Connectivity Initiative is a \$98M program supported with legislative funding of \$31.2M leveraged against FCC E-rate program reimbursements in excess of \$63M. The table below summarizes SCI costs and related State funding and expected FCC E-rate reimbursements.

|   | Total Cost     | E-rate Share        | State Share    |
|---|----------------|---------------------|----------------|
| Category 1 School Fiber Connections (WAN) | \$34.8M        | \$26.3M             | \$8.5M         |
| Category 1 Consortium Internet            | \$21.1M        | \$16.4M             | \$4.8M         |
| Category 2 Classroom Connections (Wi-Fi)  | \$31.0M        | \$20.9M             | \$10.0M        |
| <b>E-rate Eligible Totals</b>             | <b>\$86.9M</b> | <b>\$63.6M</b>      | <b>\$23.3M</b> |
|   |                |                     |                |
| Identity and Access Management            | \$1.5M         | Not eligible        | \$1.5M         |
| Client Network Engineering                | \$1.8M         | Not eligible        | \$1.8M         |
| Program Administration – NCDPI, FFL, FI   | \$0.9M         | Not eligible        | \$0.9M         |
| Firewall Services                         | \$2.0M         | Not eligible        | \$2.0M         |
| Content Filtering Services                | \$5.2M         | Not eligible        | \$5.2M         |
| <b>Non E-rate Eligible Totals</b>         | <b>\$11.4M</b> | <b>Not eligible</b> | <b>\$11.4M</b> |
| <b>Grand Totals</b>                       | <b>\$98.3M</b> | <b>\$63.6M</b>      | <b>\$34.7M</b> |

Most SCI expenditures are eligible for FCC E-rate discounts. E-rate eligible expenses are grouped into Category 1 and Category 2. Category 1 expenses include high-speed fiber optic<sup>3</sup> connections to schools and districts and Internet bandwidth charges. Category 2 expenses include wireless and wired infrastructure and services deployed inside schools to connect classrooms to the Internet. For 2018, total E-rate eligible expenses are nearly \$87M with E-rate discounts of \$63.6M, leaving a State share of \$23.3M. Total cost is slightly higher than 2017, primarily due to growth in Internet bandwidth. It is also notable that all telephony expenses are no longer E-rate eligible. The \$11.4M balance of SCI expenses comprises non-E-rate eligible services including identity and access management, client network engineering support, program administration, firewall services, and content filtering services.

---

<sup>3</sup> 99.9% of the 2694 schools in North Carolina are connected via fiber optic connection – only 4 schools are connected via a high-speed wireless solution.



## Draft Pending Approval

Specifically, SCI program expenses include the following:

1. Category 1 School Fiber Connections – Most LEAs contract with private providers to connect their schools into a district wide area network (WAN) via high-speed fiber optic connections<sup>4</sup>. Private providers include Spectrum, AT&T, CenturyLink, Broadplex, Conterra, and others. These school connections are eligible for FCC E-rate discounts of up to 90%. The SCI provides support and training in acquiring school connections and provides funding allotments to cover the non-discount share of costs to all NC LEAs. NCDPI calculates allocations based on actual contracts and invoices and delivers funding via PRC 073. Since the inception of the SCI, funding totals have remained in the \$8M to \$10M range – even with substantial upgrades to school bandwidth and services each year. In 2018, the State share of school connections costs is \$8.5M.
2. Category 1 Consortium School Internet – Core to the SCI is that all NC LEAs and charter schools have access to reliable high-speed Internet access via the NC Research and Education Network (NCREN) managed by MCNC – the same network that provides Internet access to the UNC system universities, NC community colleges, most NC private colleges and universities, and all of State government. Internet connections are monitored and upgraded on demand as usage exceeds 60% of available capacity. Charter schools have the option of either receiving a per ADM allotment via PRC 036<sup>5</sup> or receiving State-funded Internet access. For 2018, the SCI program filed E-rate procurement documents for \$21M in aggregate Internet access and connectivity – with 78% discounted through E-rate, leaving a State share of \$4.8M.
3. Category 2 Classroom Connections – In Spring of 2018, NC LEAs and charter schools procured \$31M in classroom connectivity infrastructure and services; 94% of those procurements used contracts established by NCDPI. The SCI provides support and training in acquiring internal school infrastructure and provides funding allotments to cover the non-discount share of costs to participating LEAs and charter schools. NCDPI calculates allocations based on actual contracts and invoices and delivers funding via PRC 073 to LEAs and PRC 036 to charter schools – for 2018, the total State contribution is calculated to be \$10M.
4. Identity and Access Management – The 2015 appropriations act expanded the SCI budget by \$12M annually effective FY2016-17. Identity and access management (IAM) services are included in the expansion budget. *NCEdCloud* IAM services provide for a single user ID and password for students, faculty and staff to access network accessible content. IAM services automate the provisioning and management of nearly 2.5 million user accounts and the integration of those accounts with cloud-based applications and services. NCDPI manages the *NCEdCloud* IAM service, including a \$1.5M per year contract with an identity services provider. The *NCEdCloud* IAM service processes on the order of a million logins per day. The NC Department of IT is in the process of a competitive procurement that will replace the State identity solution (NCID), and that may replace or otherwise expand the *NCEdCloud* IAM implementation.
5. Client Network Engineering (CNE) – MCNC provides CNE services under contract to NCDPI. LEAs and charter schools engage MCNC for high-level troubleshooting, network design consultation, and related training services. NCDPI also engages MCNC directly through the

---

<sup>4</sup> A dozen NC LEAs connect schools via fiber that is owned and managed by either the school system or a community collaborative. SCI provides funding allotments to these districts based on actual maintenance costs.

<sup>5</sup> PRC 036 allotments are calculated based on the per ADM sum of CAT1 fiber connections and consortium Internet in the host county/LEA.

## Draft Pending Approval

CNE contract to provide specific network and Cloud services management functions for LEAs and charter schools. MCNC bills quarterly for actual hours serving districts and charter schools. The CNE contract allows for up to \$1.8M in billings for the 2018 fiscal year. Two hundred thousand dollars per year was included in the CNE contract for 2017 and 2018 supporting the development of a security monitoring service – with the funding provided through the NC Digital Learning Initiative appropriation.

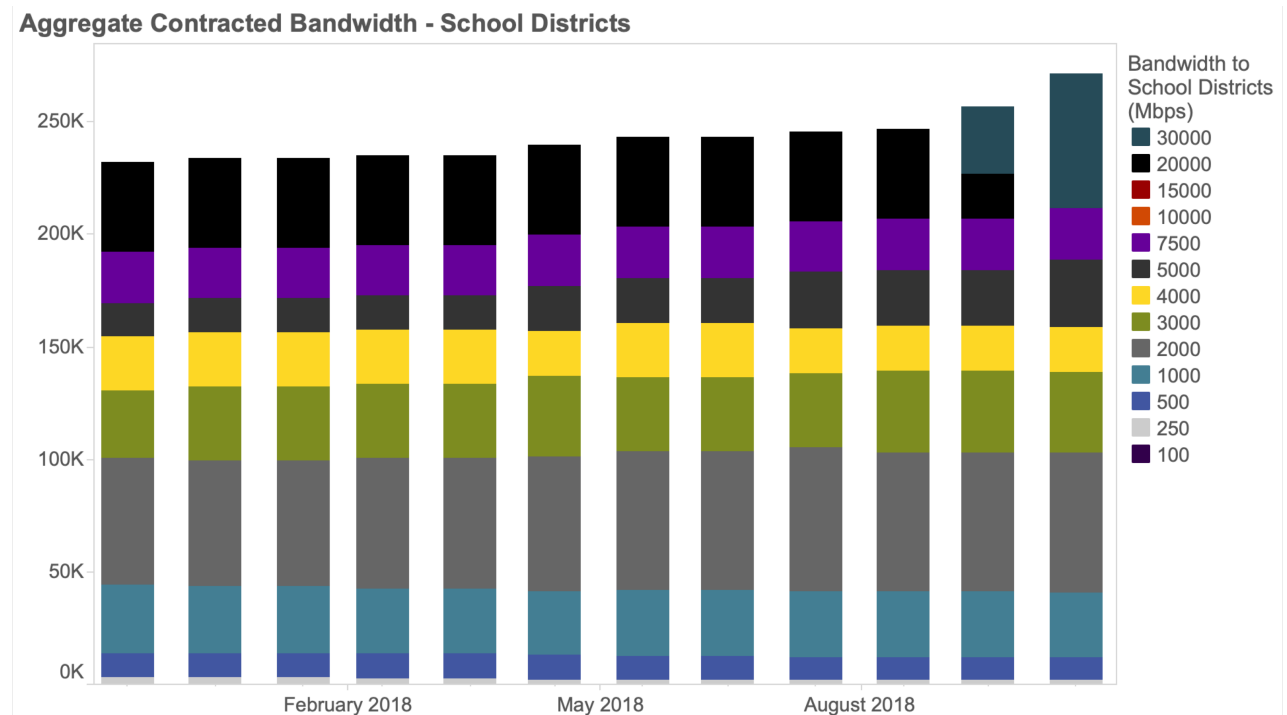
6. Program Administration – SCI program administration includes NCDPI school connectivity staff, Friday institute contract support, E-rate consulting and tools, and related travel supplies and materials costs. Six NCDPI staff members provide technical consulting, E-rate training, and related SCI support at a combined compensation and benefits expense of \$574,701<sup>6</sup>. A Friday Institute contract provides for planning, design, forecasting, modeling, and documentation support at an annual cost of \$250,000. It is notable that administrative costs associated with managing the SCI account for less than 2.9% of the \$31.2M State appropriation and 0.9% of the \$98M total annual cost of services.

---

<sup>6</sup> SCI provisional language allows for up to 8 FTE and \$1M. See Appendix C – Connectivity Staff Salary Report for details.

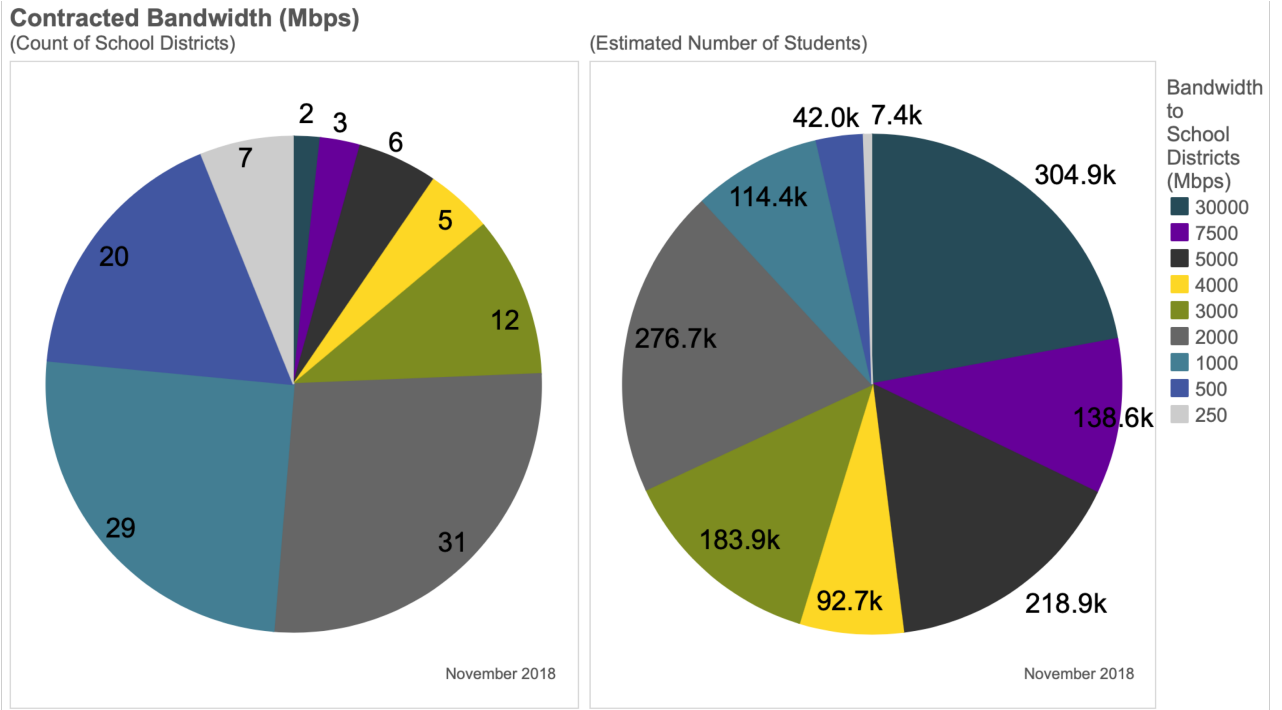
## Capacity and Usage Summary

Internet usage continues to grow as districts add more devices, allow students to bring their own devices, and employ more online resources for instruction. MCNC bills the State for Internet Bandwidth each month based on a contracted bandwidth level for each district and charter school. There are currently eleven bandwidth levels in use ranging from 250 Mbps to 30,000 Mbps (i.e., 30 Gbps). As LEAs and charter schools exceed 60% usage measured against the bandwidth service level, the SCI team initiates upgrades to the next highest service level.



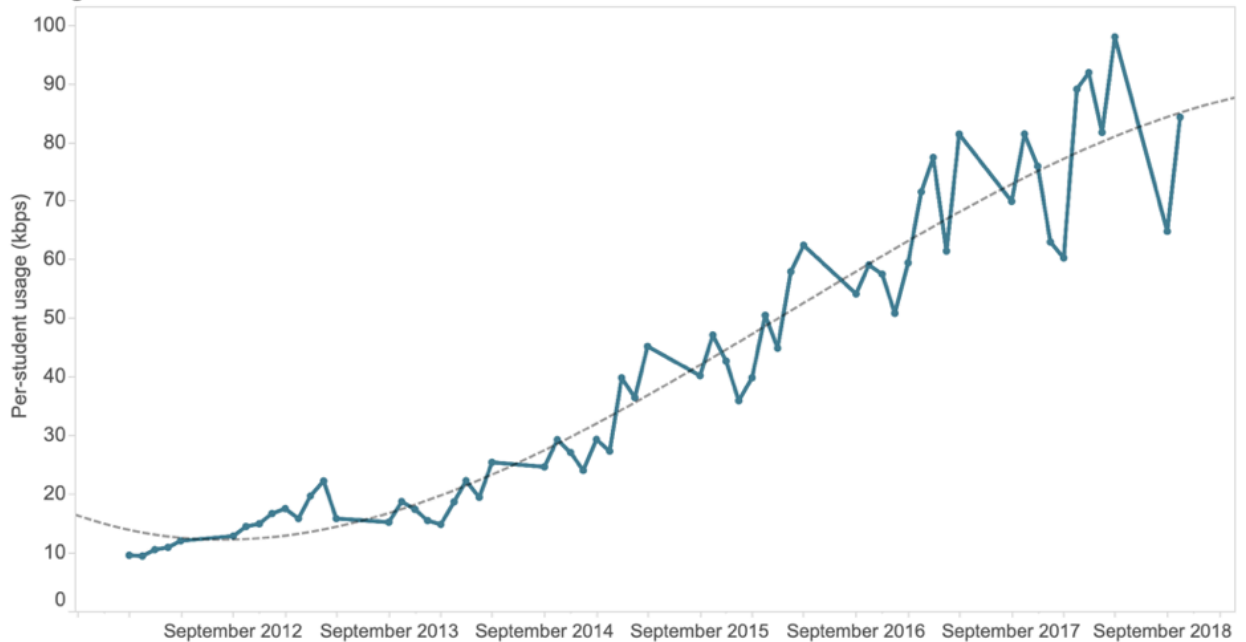
The chart above illustrates the CY2018 month-over-month growth in contracted Internet bandwidth for LEAs. The monitoring and upgrade process ensures that schools have access to enough Internet capacity to support growth in devices and applications while at the same time protecting against expending funds for over-provisioning. LEA Aggregate contracted bandwidth grew from 227 Gbps in November of 2017 to over 273 Gbps in November of 2018 – charter school aggregate contracted bandwidth stood at 18 Gbps in November 2018. Each bar shows the bandwidth contribution in each of the ten service tiers. The SCI team regularly works with the service provider community to add new service tier options to accommodate growth as efficiently as possible. Note that during calendar year 2018, the SCI team added the 30 Gbps tier. The SCI team manages the scheduling of upgrades to avoid adding new services and expense during the summer months. As illustrated in the chart below, only eight LEAs remain at the lowest 250 Mbps service tier, while 87 LEAs enjoy at least 1000 Mbps (1 Gbps) of Internet capacity.

## Draft Pending Approval



Aggregate bandwidth usage continued the trend of phenomenal year-over-year growth in calendar year 2018. All told, K12 is the largest single user of MCNC's NCREN backbone by a wide margin. MCNC's network continues to perform exceedingly well – maintaining high availability and low delay. Furthermore, MCNC peering, commodity offload, and caching solutions keep content close to the users and keep costs in check.

**Average Per-Student Utilization - School Districts**



The graph above plots average per-student utilization since 2012. In May 2012, the average per student utilization was 12 kilobits per second/student. In May 2018, the average per

student utilization was 98 kilobits per second/student. The aggregate usage in May 2018 translates to 138 Gigabits per second. Another measure of usage is peak daily utilization which represents the aggregate peak day for each month – Again looking at May 2018 the aggregate peak day utilization was 175 Gbps – over 31 Gbps higher than a year earlier. Tracking both peak and average informs decisions related to defining *enough* bandwidth and *enough* headroom.

### Internal Connections Summary

Session Law 2015-241 expanded SCI funding to support the sustainability of internal school connections – adding \$2M in 2015-16 and \$12M recurring in 2016-17. During 2015, the SCI team established a dozen contracts for wireless and wired network equipment and related services. In 2018 LEAs wrote purchase orders against these SCI contracts totaling over \$29M of the nearly \$31M in total cost. The table below summarizes 2018 E-rate category 2 internal connections procurements by discount percentage for both charter schools and for LEAs. For charter schools over 70% of category 2 E-rate applications are from schools that receive discounts in the 20-60% range, accounting for \$3.4M of the \$4M in total cost for charter school internal connections. For LEAs 78% of category 2 E-rate applications are from LEAs that receive discounts in the 80-85% range, accounting for \$15M of the \$27M in total cost for LEA internal connections.

|                    | CAT2<br>Discount<br>Rate | Pre-Discount        | Requested           | Committed           | Number of<br>Applicants | % of All CAT2<br>E-Rate<br>Committed | % of Charters |
|--------------------|--------------------------|---------------------|---------------------|---------------------|-------------------------|--------------------------------------|---------------|
| Charters           | 85%                      | \$510,543           | \$433,962           | \$404,252           | 19                      | 1.9%                                 | 23%           |
|                    | 80%                      | \$82,526            | \$52,229            | \$52,229            | 3                       | 0.2%                                 | 4%            |
|                    | 70%                      | \$114,345           | \$80,042            | \$80,042            | 3                       | 0.4%                                 | 4%            |
|                    | 60%                      | \$406,719           | \$232,957           | \$179,999           | 10                      | 0.9%                                 | 12%           |
|                    | 50%                      | \$1,456,630         | \$710,037           | \$671,822           | 19                      | 3.2%                                 | 23%           |
|                    | 40%                      | \$1,000,341         | \$408,512           | \$408,512           | 20                      | 2.0%                                 | 24%           |
|                    | 20%                      | \$487,716           | \$102,603           | \$102,603           | 10                      | 0.5%                                 | 12%           |
| Charter Total      |                          | \$4,058,821         | \$2,020,342         | \$1,899,458         | 84                      | 9.1%                                 | % of LEAs     |
| LEAs               | 85%                      | \$5,394,011         | \$4,583,053         | \$4,376,717         | 23                      | 20.9%                                | 34%           |
|                    | 80%                      | \$9,108,398         | \$7,286,719         | \$7,233,188         | 30                      | 34.6%                                | 44%           |
|                    | 70%                      | \$1,514,199         | \$1,059,939         | \$1,052,274         | 7                       | 5.0%                                 | 10%           |
|                    | 60%                      | \$9,799,199         | \$5,879,519         | \$5,816,286         | 7                       | 27.8%                                | 10%           |
|                    | 50%                      | \$1,081,199         | \$540,599           | \$540,599           | 1                       | 2.6%                                 | 1%            |
| LEA Total          |                          | \$26,897,006        | \$19,349,830        | \$19,019,065        | 68                      | 90.9%                                |               |
| <b>Grand Total</b> |                          | <b>\$30,955,827</b> | <b>\$21,370,172</b> | <b>\$20,918,523</b> | <b>152</b>              | <b>100.00%</b>                       |               |

With an investment of over \$150M since 2015, the SCI program has made substantial progress in the provision of digital-ready classrooms in NC public schools. According to 2018 Digital Learning and Media Inventory (DLMI) data, there are 125,000 wireless access points in NC public schools – equating to 1.2 access points per classroom or 12 students per access point. It is notable that due to variations in charter school facilities and class size, as compared to traditional public school counterparts, access point counts are a less reliable indicator of digital learning readiness. Moreover, tracking investments in infrastructure and services provides a limited view of readiness related to classroom access. There are many

## Draft Pending Approval

operational elements of internal school level infrastructure and services that are not easily measured in a comprehensive manner. It will be important to understand these operational considerations in order to have a more accurate picture of actual digital readiness.

## CONSIDERATIONS FOR 2019

---

### Network Operations Internship Program

Establish a program which builds upon technical resources, classes, and students across the community college system, to cultivate talent for use in K-12 school. By developing an intern or co-op program for computer/networking students at community colleges across the state, K-12 schools could greatly benefit, while providing “starter” jobs for college students in NC. This could reduce the state’s dependence on recruiting talent from outside the state.

### Proactive Network Health and Security Monitoring

Establish an oversight function that measures school connectivity performance and by physically visiting each school in the state and executing application and network performance tests at least once every three years.

Initiate a program to deploy network health and security monitoring technology to every school. The program would take 5 years to fully deploy but would provide valuable data to ensure technology funds are being utilized correctly, as well as to determine security vulnerabilities which may potentially lead to information loss or prevent on-line learning and test taking.

### Education Service Agency

Position NC DPI as an *Education Service Agency* (ESA) as defined and recognized by the FCC. Specifically, giving statutory authority to NCDPI to file for E-rate eligible services on behalf of North Carolina public schools and libraries. This would allow DPI to, for example, file an FCC Form 470, without collecting signatures from every school district or library on a letter of agency. FCC rules allow state agencies with statutory authority to procure for schools and libraries to skip the difficult and time-consuming task of obtaining LOAs. Additionally, libraries under the control of Department of Cultural Resources should be permitted and encouraged to use DPI contracts for E-rate eligible products, reducing the administrative burden for libraries.

### Education Broadband Spectrum Pilot

Initiate a pilot program in one or more rural counties to deploy broadband using spectrum that has been reserved by the FCC for educational use, or newly licensed spectrum and associated technology.

---

**SUPPORTING DOCUMENTATION**

---

FCC Chairman Ajit Pai visited North Carolina in May 2018 to celebrate our school connectivity achievements.

<https://www.carolinajournal.com/news-article/fcc-chairman-visits-north-carolina-high-school-to-celebrate-school-connectivity/>

An interactive map that illustrates LEA and charter school aggregate and per student network utilization statistics can be found at the link below.

[https://www.mcnc.org/ncren/portal/reporting/ncren\\_utilization\\_map](https://www.mcnc.org/ncren/portal/reporting/ncren_utilization_map)

A data dashboard presenting school connectivity usage data and related statistics can be found at the link below.

<http://go.ncsu.edu/scireport>

The balance of this report includes supporting data as follows.

| <b>APPENDIX</b> | <b>DATA</b>  |
|-----------------|--|
| A               | 2018 LEA PRC 073 allotments and shared services distributions            |
| B               | 2018 PRC 036 charter school allotments and shared services distributions |
| C               | The NCDPI connectivity staff salary report                               |
| D               | North Carolina E-rate funding history report                             |



**APPENDIX A - 2017 LEA PRC 073 ALLOTMENTS AND SHARED SERVICES DISTRIBUTIONS**

The table below illustrates funding received by each LEA via PRC 073 allotment and funding applied to each LEA centrally for shared services – specifically, for Internet, content filtering, and firewall services. LEAs requested E-rate funds during spring of 2017 with service funding year between July 1, 2017 and June 30, 2018. PRC 073 allotments distributed during calendar year 2018 to cover non-E-rate costs for eligible school connections.

| LEA ID | Name                           | PRC 073 Allotments |                    | Shared Services Paid by DPI |                    |                     | Total               |
|--------|--------------------------------|--------------------|--------------------|-----------------------------|--------------------|---------------------|---------------------|
|        |                                | WAN                | WIFI               | Content Filter              | Firewall           | Internet            |                     |
|        | <b>Grand Total</b>             | <b>\$8,273,750</b> | <b>\$9,052,678</b> | <b>\$4,291,323</b>          | <b>\$1,330,020</b> | <b>\$11,210,042</b> | <b>\$34,157,813</b> |
| 010    | Alamance-Burlington Schools    | \$58,824           | \$42,516           | \$114,548                   | \$31,109           | \$194,941           | \$441,938           |
| 020    | Alexander County Schools       | \$26,931           | \$45,457           | \$34,812                    |                    | \$54,896            | \$162,096           |
| 030    | Alleghany County Schools       | \$17,280           | \$7,023            | -\$626                      |                    | \$31,339            | \$55,016            |
| 040    | Anson County Schools           | \$19,890           |                    | -\$1,588                    |                    | \$50,755            | \$69,057            |
| 050    | Ashe County Schools            | \$22,080           |                    | -\$947                      | \$13,516           | \$51,560            | \$86,209            |
| 060    | Avery County Schools           | \$15,024           |                    | -\$1,588                    | \$4,162            | \$50,755            | \$68,353            |
| 070    | Beaufort County Schools        | \$19,971           |                    | \$34,812                    |                    | \$50,755            | \$105,538           |
| 080    | Bertie County Schools          | \$22,289           |                    | \$34,812                    | \$11,327           | \$50,755            | \$119,183           |
| 090    | Bladen County Schools          | \$50,667           | \$23,325           | \$63,430                    | \$14,753           | \$116,264           | \$268,439           |
| 100    | Brunswick County Schools       | \$78,977           |                    | \$78,712                    |                    | \$165,389           | \$323,078           |
| 110    | Buncombe County Schools        | \$106,920          |                    | \$77,430                    |                    | \$137,959           | \$322,309           |
| 111    | Asheville City Schools         | \$65,063           | \$60,804           | \$34,403                    |                    | \$56,322            | \$216,592           |
| 120    | Burke County Schools           | \$73,416           | \$26,822           | \$85,430                    | \$34,421           | \$152,827           | \$372,916           |
| 130    | Cabarrus County Schools        | \$210,614          | \$911,635          | \$136,283                   | \$31,109           | \$202,575           | \$1,492,216         |
| 132    | Kannapolis City Schools        | \$11,354           |                    | \$48,612                    | \$17,872           | \$69,434            | \$147,272           |
| 140    | Caldwell County Schools        | \$81,512           | \$103,255          | -\$2,870                    | \$14,753           | \$84,224            | \$280,874           |
| 150    | Camden County Schools          | \$17,017           | \$42,330           | \$21,803                    | \$11,327           | \$34,340            | \$126,817           |
| 160    | Carteret County Public Schools | \$121,344          |                    | \$53,212                    | \$18,444           | \$76,412            | \$269,412           |
| 170    | Caswell County Schools         | \$100,277          | \$40,291           | -\$947                      | \$11,327           | \$34,340            | \$185,288           |
| 180    | Catawba County Schools         | \$96,048           |                    | -\$2,870                    |                    | \$134,242           | \$227,420           |
| 181    | Hickory City Schools           | \$49,236           |                    | -\$947                      |                    | \$38,235            | \$86,524            |
| 182    | Newton Conover City Schools    | \$7,312            |                    | \$9,553                     | \$13,599           | \$39,390            | \$69,854            |
| 190    | Chatham County Schools         | \$26,402           |                    | \$63,430                    | \$14,753           | \$116,264           | \$220,849           |
| 200    | Cherokee County Schools        | \$26,827           |                    | \$34,403                    | \$13,516           | \$118,620           | \$193,366           |
| 210    | Edenton-Chowan Schools         | \$53,128           | \$52,614           | \$21,803                    | \$11,327           | \$34,340            | \$173,212           |
| 220    | Clay County Schools            | \$10,800           | \$7,846            | -\$626                      |                    | \$22,137            | \$40,157            |
| 230    | Cleveland County Schools       | \$50,220           |                    | \$63,430                    | \$14,753           | \$92,106            | \$220,509           |
| 240    | Columbus County Schools        | \$33,457           |                    | \$34,812                    | \$11,327           | \$50,755            | \$130,351           |
| 241    | Whiteville City Schools        |                    |                    | -\$947                      |                    | \$34,340            | \$33,393            |
| 250    | Craven County Schools          | \$87,182           | \$104,262          | \$63,430                    | \$14,753           | \$92,106            | \$361,733           |
| 260    | Cumberland County Schools      | \$256,019          |                    | \$191,578                   | \$48,163           | \$275,014           | \$770,774           |
| 270    | Currituck County Schools       | \$49,460           |                    | \$22,571                    | \$11,327           | \$37,776            | \$121,134           |
| 280    | Dare County Schools            | \$48,994           |                    | \$34,812                    | \$11,327           | \$50,755            | \$145,888           |
| 290    | Davidson County Schools        | \$230,040          | \$168,927          | \$63,430                    | \$14,753           | \$87,295            | \$564,445           |

## Draft Pending Approval

|     |                                      |           |             |           |          |           |             |
|-----|--------------------------------------|-----------|-------------|-----------|----------|-----------|-------------|
| 291 | Lexington City Schools               | \$9,211   | \$1,469     | \$21,803  | \$11,327 | \$35,800  | \$79,610    |
| 292 | Thomasville City Schools             | \$12,449  | \$4,245     | \$7,803   | \$14,557 | \$35,800  | \$74,854    |
| 300 | Davie County Schools                 | \$12,400  | \$49,437    | \$33,530  | \$11,327 | \$38,178  | \$144,872   |
| 310 | Duplin County Schools                | \$24,653  |             | \$63,430  | \$14,753 | \$116,264 | \$219,100   |
| 320 | Durham Public Schools                | \$130,272 |             | \$67,430  | \$29,878 | \$93,693  | \$321,273   |
| 330 | Edgecombe County Public Schools      | \$18,618  | \$6,553     | \$64,712  | \$14,753 | \$105,248 | \$209,884   |
| 340 | Winston Salem/Forsyth County Schools | \$344,652 |             | -\$6,717  |          | \$270,359 | \$608,294   |
| 350 | Franklin County Schools              | \$54,699  |             | \$34,812  | \$11,327 | \$48,500  | \$149,338   |
| 360 | Gaston County Schools                | \$153,036 | \$149,862   | -\$5,435  |          | \$200,730 | \$498,193   |
| 370 | Gates County Schools                 | \$16,141  |             | \$13,999  | \$6,311  | \$23,491  | \$59,942    |
| 380 | Graham County Schools                | \$3,000   |             | \$8,124   | \$6,203  | \$28,396  | \$45,723    |
| 390 | Granville County Schools             | \$51,392  |             | \$63,430  | \$14,753 | \$92,106  | \$221,681   |
| 400 | Greene County Schools                | \$12,810  | \$32,426    | -\$1,588  | \$11,327 | \$58,537  | \$113,512   |
| 410 | Guilford County Schools              | \$164,629 | \$397,702   | \$136,283 |          | \$232,144 | \$930,758   |
| 420 | Halifax County Schools               | \$12,180  | \$45,133    | \$34,403  |          | \$59,562  | \$151,278   |
| 421 | Roanoke Rapids City Schools          | \$12,480  | \$8,108     | \$21,803  | \$11,327 | \$34,340  | \$88,058    |
| 422 | Weldon City Schools                  | \$6,292   |             | \$13,999  | \$6,311  | \$23,491  | \$50,093    |
| 430 | Harnett County Schools               | \$97,391  | \$97,931    | -\$4,152  |          | \$176,109 | \$367,279   |
| 440 | Haywood County Schools               | \$41,794  |             | -\$1,588  |          | \$50,755  | \$90,961    |
| 450 | Henderson County Schools             | \$61,375  | \$25,560    | \$63,430  |          | \$92,106  | \$242,471   |
| 460 | Hertford County Schools              | \$5,457   | \$39,345    | -\$947    | \$11,327 | \$34,340  | \$89,522    |
| 470 | Hoke County Schools                  | \$46,116  | \$37,924    | \$63,430  | \$14,753 | \$116,264 | \$278,487   |
| 480 | Hyde County Schools                  | \$3,094   |             | \$13,999  | \$6,311  | \$23,491  | \$46,895    |
| 490 | Iredell-Statesville Schools          | \$438,933 | \$312,823   | \$135,865 | \$38,628 | \$233,540 | \$1,159,789 |
| 491 | Mooreville Graded School District    | \$10,445  |             | \$63,430  | \$14,713 | \$92,106  | \$180,694   |
| 500 | Jackson County Public Schools        | \$17,700  |             | -\$1,588  |          | \$50,755  | \$66,867    |
| 510 | Johnston County Schools              | \$238,680 | \$307,976   | -\$9,922  | \$47,525 | \$408,949 | \$993,208   |
| 520 | Jones County Schools                 | \$11,921  |             | -\$626    | \$6,311  | \$24,332  | \$41,938    |
| 530 | Lee County Schools                   | \$60,312  | \$75,974    | \$63,430  | \$14,753 | \$92,106  | \$306,575   |
| 540 | Lenoir County Public Schools         | \$44,618  |             | -\$4,152  |          | \$185,399 | \$225,865   |
| 550 | Lincoln County Schools               | \$82,725  |             | -\$2,870  | \$13,466 | \$92,106  | \$185,427   |
| 560 | Macon County Schools                 | \$64,500  |             | -\$1,588  |          | \$42,944  | \$105,856   |
| 570 | Madison County Schools               | \$8,160   | \$6,031     | \$32,303  | \$11,327 | \$49,297  | \$107,118   |
| 580 | Martin County Schools                | \$14,830  |             | \$15,249  | \$10,152 | \$25,453  | \$65,684    |
| 590 | McDowell County Schools              | \$42,828  | \$91,794    | -\$1,588  | \$14,753 | \$73,964  | \$221,751   |
| 600 | Charlotte-Mecklenburg Schools        | \$341,988 | \$1,002,693 | \$474,550 |          | \$750,035 | \$2,569,266 |
| 610 | Mitchell County Schools              | \$17,949  | \$102,415   | \$21,803  | \$11,327 | \$39,390  | \$192,884   |
| 620 | Montgomery County Schools            | \$18,228  |             | -\$1,588  | \$11,327 | \$58,537  | \$86,504    |
| 630 | Moore County Schools                 | \$89,712  |             | \$63,430  |          | \$87,295  | \$240,437   |
| 640 | Nash-Rocky Mount Schools             | \$117,700 |             | -\$4,152  | \$31,109 | \$176,109 | \$320,766   |
| 650 | New Hanover County Schools           | \$200,350 | \$200,116   | -\$2,870  |          | \$137,959 | \$535,555   |
| 660 | Northampton County Schools           | \$10,914  |             | \$21,499  | \$11,327 | \$35,263  | \$79,003    |
| 670 | Onslow County Schools                | \$204,984 | \$236,945   | \$83,430  | \$34,421 | \$129,046 | \$688,826   |

## Draft Pending Approval

|     |  |           |             |           |          |           |             |
|-----|--|-----------|-------------|-----------|----------|-----------|-------------|
| 680 | Orange County Schools                    | \$34,238  | \$230,299   | \$34,812  | \$16,728 | \$48,500  | \$364,577   |
| 681 | Chapel Hill-Carrboro City Schools        | \$59,502  | \$541,048   | \$79,430  | \$32,849 | \$121,658 | \$834,487   |
| 690 | Pamlico County Schools                   | \$10,000  |             | -\$626    |          | \$24,332  | \$33,706    |
| 700 | Elizabeth City-Pasquotank Public Schools | \$62,952  |             | \$34,812  | \$11,327 | \$50,755  | \$159,846   |
| 710 | Pender County Schools                    | \$51,856  |             | \$64,712  |          | \$119,129 | \$235,697   |
| 720 | Perquimans County Schools                | \$12,554  |             | \$21,803  | \$11,327 | \$34,340  | \$80,024    |
| 730 | Person County Schools                    | \$30,180  | \$8,628     | \$39,412  | \$16,728 | \$58,029  | \$152,977   |
| 740 | Pitt County Schools                      | \$172,440 |             | \$115,465 | \$31,109 | \$174,711 | \$493,725   |
| 750 | Polk County Schools                      | \$10,706  | \$35,780    | -\$947    | \$11,327 | \$34,340  | \$91,206    |
| 760 | Randolph County School System            | \$105,982 |             | \$63,430  | \$14,753 | \$79,134  | \$263,299   |
| 761 | Asheboro City Schools                    | \$22,243  | \$56,866    | \$32,303  | \$13,599 | \$47,560  | \$172,571   |
| 770 | Richmond County Schools                  | \$30,366  |             | \$63,430  | \$14,753 | \$92,106  | \$200,655   |
| 780 | Public Schools of Robeson County         | \$53,358  |             | \$105,030 | \$35,352 | \$181,888 | \$375,628   |
| 790 | Rockingham County Schools                | \$40,982  |             | \$85,430  | \$31,109 | \$132,740 | \$290,261   |
| 800 | Rowan-Salisbury Schools                  | \$83,520  |             | -\$5,435  |          | \$194,168 | \$272,253   |
| 810 | Rutherford County Schools                | \$15,177  |             | \$63,430  | \$14,753 | \$92,106  | \$185,466   |
| 820 | Sampson County Schools                   | \$31,458  | \$20,726    | \$32,812  | \$17,300 | \$78,373  | \$180,669   |
| 821 | Clinton City Schools                     | \$25,440  |             | -\$947    | \$13,600 | \$49,992  | \$88,085    |
| 830 | Scotland County Schools                  | \$38,288  |             | -\$1,588  | \$18,444 | \$83,488  | \$138,632   |
| 840 | Stanly County Schools                    | \$85,656  | \$3,170     | -\$1,588  | \$11,327 | \$48,500  | \$147,065   |
| 850 | Stokes County Schools                    | \$47,440  | \$64,665    | \$34,812  | \$12,614 | \$50,755  | \$210,286   |
| 860 | Surry County Schools                     | \$53,841  | \$55,553    | \$63,430  | \$14,753 | \$92,106  | \$279,683   |
| 861 | Elkin City Schools                       | \$7,000   | \$6,977     | -\$626    | \$7,364  | \$25,935  | \$46,650    |
| 862 | Mount Airy City Schools                  | \$18,611  |             | \$21,803  | \$11,327 | \$34,340  | \$86,081    |
| 870 | Swain County Schools                     | \$15,000  | \$661       | -\$1,588  |          | \$50,755  | \$64,828    |
| 880 | Transylvania County Schools              | \$20,052  |             | \$23,903  | \$13,599 | \$37,210  | \$94,764    |
| 890 | Tyrrell County Schools                   | \$3,000   |             | -\$626    | \$6,311  | \$23,491  | \$32,176    |
| 900 | Union County Public Schools              | \$544,254 |             | \$14,448  |          | \$175,970 | \$734,672   |
| 910 | Vance County Schools                     | \$28,152  | \$5,181     | \$39,412  | \$16,728 | \$58,029  | \$147,502   |
| 920 | Wake County Schools                      | \$803,650 | \$2,757,264 | -\$25,950 |          | \$750,035 | \$4,284,999 |
| 930 | Warren County Schools                    | \$29,187  | \$4,724     | \$21,803  | \$11,327 | \$34,340  | \$101,381   |
| 940 | Washington County Schools                | \$15,160  | \$29,299    | \$21,803  |          | \$34,340  | \$100,602   |
| 950 | Watauga County Schools                   | \$29,430  | \$68,240    | \$21,803  | \$11,327 | \$34,340  | \$165,140   |
| 960 | Wayne County Public Schools              | \$79,200  | \$265,163   | -\$2,870  | \$14,483 | \$111,940 | \$467,916   |
| 970 | Wilkes County Schools                    | \$22,380  |             | \$64,712  |          | \$123,004 | \$210,096   |
| 980 | Wilson County Schools                    | \$38,640  |             | \$63,430  | \$14,753 | \$92,106  | \$208,929   |
| 990 | Yadkin County Schools                    | \$50,470  | \$28,865    | \$34,812  | \$11,327 | \$48,500  | \$173,974   |
| 995 | Yancey County Schools                    | \$15,192  |             | \$13,999  | \$6,311  | \$23,491  | \$58,993    |

**APPENDIX B – 2017 CHARTER PRC 036 ALLOTMENTS AND SHARED SERVICES DISTRIBUTIONS**

Charter schools may choose to receive a centrally funded Internet connection or a PRC 036 allotment that is calculated based on the SCI per ADM benefit to their home LEA. Charters are also eligible for Wifi, Firewall and content filter services. These are the 2018 PRC 036 allotments for participating charter schools.

| LEA ID | Name  | PRC 036 Allotments |                  | Shared Services Paid by DPI |                  |                    | Total              |
|--------|---|--------------------|------------------|-----------------------------|------------------|--------------------|--------------------|
|        |   | WAN                | WIFI             | Content Filter              | Firewall         | Internet           |                    |
|        | <b>Grand Total</b>                          | <b>\$290,155</b>   | <b>\$996,890</b> | <b>\$900,817</b>            | <b>\$745,399</b> | <b>\$2,123,585</b> | <b>\$5,056,846</b> |
| 01B    | River Mill Academy                          |                    |                  | \$10,546                    | \$6,203          | \$19,559           | \$36,308           |
| 01C    | Clover Garden                               |                    | \$26,514         | -\$434                      |                  | \$14,783           | \$40,863           |
| 01D    | The Hawbridge School                        |                    |                  | \$9,966                     | \$6,203          | \$14,783           | \$30,952           |
| 06A    | Grandfather Academy                         | \$5,000            |                  |                             |                  |                    | \$5,000            |
| 06B    | Marjorie Williams Academy                   | \$5,000            |                  | \$5,996                     | \$6,203          | \$12,322           | \$29,521           |
| 07A    | Washington Montessori Public Charter School |                    |                  | -\$179                      |                  | \$13,084           | \$12,905           |
| 08A    | Three Rivers Academy                        | \$1,260            |                  | \$5,996                     | \$6,203          | \$13,084           | \$26,543           |
| 09A    | Paul R Brown Leadership Academy             | \$5,000            |                  |                             |                  |                    | \$5,000            |
| 09B    | Emereau: Bladen                             |                    | \$2,300          |                             |                  | \$12,628           | \$14,928           |
| 10A    | Charter Day School                          |                    |                  | \$9,966                     | \$6,203          | \$14,783           | \$30,952           |
| 10B    | South Brunswick Charter School              | \$5,274            |                  | \$4,737                     | \$6,203          | \$19,736           | \$35,950           |
| 11A    | Evergreen Community Charter                 |                    | \$69,474         | -\$179                      |                  | \$12,322           | \$81,617           |
| 11B    | ArtSpace Charter School                     |                    |                  | \$5,996                     | \$6,203          | \$12,322           | \$24,521           |
| 11C    | IC Imagine                                  |                    |                  |                             |                  | \$12,154           | \$12,154           |
| 11D    | The Franklin School of Innovation           |                    |                  | \$9,966                     | \$10,680         | \$6,661            | \$27,307           |
| 11K    | Francine Delany New School for Children     |                    |                  | \$3,612                     | \$6,845          | \$10,948           | \$21,405           |
| 12A    | The New Dimensions School                   |                    |                  | \$4,571                     | \$6,203          | \$12,322           | \$23,096           |
| 13A    | Carolina International School               |                    | \$31,870         | -\$434                      |                  | \$14,519           | \$45,955           |
| 13B    | Cabarrus Charter Academy                    | \$5,000            |                  |                             |                  |                    | \$5,000            |
| 13C    | A.C.E. Academy                              |                    |                  | \$5,996                     | \$6,203          | \$12,293           | \$24,492           |
| 13D    | Kannapolis Charter Academy                  | \$5,000            |                  |                             |                  |                    | \$5,000            |
| 16B    | Tiller School                               | \$5,000            |                  |                             |                  |                    | \$5,000            |
| 19A    | Chatham Charter                             |                    | \$24,468         | \$9,966                     | \$6,203          | \$15,317           | \$55,954           |
| 19B    | Woods Charter                               |                    |                  | \$9,966                     | \$7,339          | \$14,783           | \$32,088           |
| 19C    | Willow Oak Montessori                       |                    |                  | \$5,301                     | \$6,203          | \$10,941           | \$22,445           |
| 20A    | The Learning Center                         | \$3,840            |                  |                             |                  |                    | \$3,840            |
| 23A    | Pinnacle Classical Academy                  |                    |                  | \$4,875                     |                  | \$13,051           | \$17,926           |
| 24B    | Thomas Academy                              | \$5,000            |                  |                             |                  |                    | \$5,000            |
| 24N    | Columbus Charter School                     | \$9,746            |                  | \$5,996                     | \$3,831          | \$13,084           | \$32,657           |
| 26B    | Alpha Academy                               |                    |                  |                             |                  |                    | \$0                |
| 26C    | The Capitol Encore Academy                  |                    |                  | -\$179                      |                  | \$13,084           | \$12,905           |
| 27A    | Water's Edge Village School                 |                    |                  | \$4,101                     | \$3,831          | \$11,274           | \$19,206           |
| 29A    | Davidson Charter Academy                    |                    |                  |                             |                  |                    | \$0                |
| 32A    | Maureen Joy Charter School                  | \$2,160            |                  |                             |                  |                    | \$2,160            |
| 32B    | Healthy Start Academy                       |                    |                  | \$9,966                     | \$7,339          | \$14,519           | \$31,824           |

## Draft Pending Approval

|     |  |          |          |          |          |          |          |
|-----|--|----------|----------|----------|----------|----------|----------|
| 32C | Carter Community Charter School, Inc.                  |          | \$6,036  | \$9,966  |          | \$14,519 | \$30,521 |
| 32D | Kestrel Heights School                                 | \$16,850 |          | \$13,999 | \$3,716  | \$23,707 | \$58,272 |
| 32H | Research Triangle Charter Academy                      | \$5,000  |          |          |          |          | \$5,000  |
| 32K | Central Park School for Children                       | \$7,200  | \$4,768  | \$5,996  | \$6,203  | \$12,293 | \$36,460 |
| 32L | Voyager Academy  |          |          | \$21,803 | \$11,327 | \$35,800 | \$68,930 |
| 32M | Global Scholars Academy                                |          |          | \$9,966  | \$6,892  | \$14,519 | \$31,377 |
| 32N | Research Triangle High School                          |          |          | \$21,803 | \$11,327 | \$35,800 | \$68,930 |
| 32P | The Institute for the Development of Young Leaders     |          | \$6,009  | \$4,737  | \$3,831  | \$10,937 | \$25,514 |
| 32Q | Reaching All Minds Academy                             |          |          | \$4,737  | \$6,203  | \$10,937 | \$21,877 |
| 32R | Excelsior Classical Academy CFA                        |          |          | \$5,537  | \$6,203  | \$11,977 | \$23,717 |
| 32S | KIPP Durham College Preparatory                        |          |          | \$5,046  | \$493    | \$12,322 | \$17,861 |
| 33A | North East Carolina Preparatory                        |          | \$16,720 | -\$434   |          | \$15,317 | \$31,603 |
| 34B | Quality Education Academy                              |          |          | \$9,966  | \$6,203  | \$14,783 | \$30,952 |
| 34D | Carter G Woodson School                                |          |          | \$5,996  | \$6,203  | \$12,322 | \$24,521 |
| 34F | Forsyth Academy  | \$5,000  |          |          |          |          | \$5,000  |
| 34G | The Arts Based School                                  | \$5,000  |          |          |          |          | \$5,000  |
| 34H | NC Leadership Charter Academy                          |          |          | \$9,966  | \$6,203  | \$14,783 | \$30,952 |
| 35A | Crosscreek Charter School                              | \$5,000  |          |          |          |          | \$5,000  |
| 35B | Youngsville Academy                                    | \$5,000  |          |          |          |          | \$5,000  |
| 36B | Piedmont Community Charter School                      | \$5,216  |          | \$13,999 | \$6,311  | \$23,707 | \$49,233 |
| 36C | Mountain Island Charter School Inc                     |          |          | \$13,999 | \$6,311  | \$25,812 | \$46,122 |
| 39A | Falls Lake Academy                                     | \$1,525  | \$42,121 | -\$626   |          | \$23,707 | \$66,727 |
| 39B | Oxford Preparatory School                              |          | \$13,124 | -\$124   | \$3,637  | \$11,274 | \$27,911 |
| 41B | Greensboro Academy                                     | \$5,000  |          |          |          |          | \$5,000  |
| 41C | Guilford Preparatory Academy                           | \$4,032  | \$5,217  | \$4,737  | \$6,203  | \$10,948 | \$31,137 |
| 41D | Phoenix Academy Inc                                    | \$5,000  |          |          |          |          | \$5,000  |
| 41F | Triad Math and Science Academy                         | \$2,700  |          | \$13,866 | \$6,311  | \$26,387 | \$49,264 |
| 41G | Cornerstone Charter Academy                            |          |          | \$9,966  | \$6,203  | \$14,783 | \$30,952 |
| 41H | College Preparatory & Leadership Academy of High Point |          |          | \$5,996  | \$6,203  | \$10,227 | \$22,426 |
| 41J | Summerfield Charter Academy                            | \$5,000  |          |          |          |          | \$5,000  |
| 41K | Piedmont Classical High School                         |          | \$13,962 | \$4,737  | \$7,339  | \$10,937 | \$36,975 |
| 41L | Gate City Charter Academy                              | \$5,000  |          |          |          |          | \$5,000  |
| 41M | Next Generation Academy                                |          |          |          |          |          | \$0      |
| 41N | The Experiential School of Greensboro                  |          |          |          |          |          | \$0      |
| 42A | KIPP Halifax College Preparatory                       |          |          | \$9,412  | \$6,203  | \$21,972 | \$37,587 |
| 43C | Anderson Creek Academy                                 |          |          | -\$138   |          | \$12,727 | \$12,589 |
| 44A | Shining Rock Classical Academy                         |          |          | \$5,996  | \$6,203  | \$12,322 | \$24,521 |
| 45A | The Mountain Community Sch                             |          |          | \$3,571  | \$6,203  | \$12,322 | \$22,096 |
| 45B | FernLeaf Community Charter School                      |          | \$4,110  | \$4,737  | \$6,203  | \$10,948 | \$25,998 |
| 49B | American Renaissance School                            | \$6,071  |          | \$13,999 | \$6,203  | \$23,707 | \$49,980 |
| 49D | Success Charter School                                 |          |          | \$4,101  | \$3,637  | \$10,505 | \$18,243 |
| 49E | Pine Lake Preparatory, Inc.                            |          |          | \$22,124 | \$11,327 | \$41,581 | \$75,032 |
| 49F | Langtree Charter Academy                               | \$5,000  |          |          |          |          | \$5,000  |
| 49G | Iredell Charter Academy                                | \$5,000  |          |          |          |          | \$5,000  |
| 50A | Summit Charter School                                  | \$8,296  |          |          |          |          | \$8,296  |

## Draft Pending Approval

|     |   |         |           |          |          |          |           |
|-----|---|---------|-----------|----------|----------|----------|-----------|
| 51A | Neuse Charter School                      |         |           | \$13,999 | \$6,311  | \$24,332 | \$44,642  |
| 51B | Johnston Charter Academy                  |         |           |          |          |          | \$0       |
| 53B | Ascend Leadership Academy: Lee County     |         |           |          |          |          | \$0       |
| 54A | The Children's Village Academy            |         |           | \$6,124  |          | \$9,315  | \$15,439  |
| 55A | Lincoln Charter School                    | \$6,163 | \$44,241  | \$13,999 | \$9,435  | \$25,812 | \$99,650  |
| 58B | Bear Grass Charter School                 |         | \$19,299  | \$13,999 | \$6,311  | \$24,332 | \$63,941  |
| 60B | Sugar Creek Charter                       | \$3,348 |           | \$13,999 | -\$605   | \$25,812 | \$42,554  |
| 60D | Lake Norman Charter                       |         | \$146,154 | \$21,803 |          | \$39,390 | \$207,347 |
| 60F | Metrolina Regional Scholars Academy       |         |           | \$5,996  | \$6,203  | \$12,322 | \$24,521  |
| 60G | Queen's Grant Community School            |         | \$39,051  | \$11,916 | \$6,203  | \$20,585 | \$77,755  |
| 60I | Community School of Davidson              |         |           | \$12,241 | \$7,339  | \$21,552 | \$41,132  |
| 60J | Socrates Academy                          |         |           | \$5,996  | \$6,203  | \$12,293 | \$24,492  |
| 60K | Charlotte Secondary School                |         |           | \$9,966  | \$6,203  | \$14,783 | \$30,952  |
| 60L | KIPP Charlotte                            | \$708   |           |          |          |          | \$708     |
| 60M | Corvian Community School                  | \$6,336 | \$46,560  | \$5,996  | \$6,009  | \$12,322 | \$77,223  |
| 60N | Aristotle Preparatory Academy             |         |           | \$4,737  | \$6,203  | \$10,937 | \$21,877  |
| 60P | Charlotte Choice Charter                  |         |           | \$5,996  | \$6,203  | \$12,322 | \$24,521  |
| 60Q | Invest Collegiate Transform               |         | \$39,440  | -\$179   |          | \$12,322 | \$51,583  |
| 60S | Bradford Preparatory School               |         |           | \$7,116  |          | \$19,445 | \$26,561  |
| 60U | Commonwealth High School                  |         |           | -\$179   |          | \$12,322 | \$12,143  |
| 60V | Charlotte Learning Academy                |         |           | -\$179   | \$6,203  | \$12,322 | \$18,346  |
| 60Y | Pioneer Springs Community School          | \$7,725 | \$4,385   | \$4,737  | \$11,980 | \$10,948 | \$39,775  |
| 61J | Lakeside Charter Academy                  |         |           | \$5,996  | \$6,203  | \$12,322 | \$24,521  |
| 61K | United Community School                   |         |           | \$4,737  | \$6,203  | \$10,948 | \$21,888  |
| 61L | Stewart Creek High School                 |         |           | -\$138   |          | \$10,948 | \$10,810  |
| 61M | Charlotte Lab School                      |         | \$32,346  | \$5,996  | \$7,339  | \$12,322 | \$58,003  |
| 61N | Queen City STEM School                    |         |           | \$9,246  | \$6,203  | \$14,612 | \$30,061  |
| 61P | VERITAS Community School                  |         |           | \$4,737  | \$11,980 | \$10,948 | \$27,665  |
| 61Q | Mallard Creek STEM Academy                |         |           | \$5,996  | \$6,203  | \$12,322 | \$24,521  |
| 61R | Matthews Charter Academy                  | \$5,000 |           |          |          |          | \$5,000   |
| 61S | Unity Classical Charter School            | \$5,000 |           |          |          |          | \$5,000   |
| 61T | Movement Charter School                   |         |           |          | \$7,364  | \$12,154 | \$19,518  |
| 61U | UpROAR Leadership Academy                 |         |           | \$4,750  | \$7,883  | \$12,154 | \$24,787  |
| 61W | East Voyager Academy of Charlotte         |         |           |          |          |          | \$0       |
| 61X | Mountain Island Day School                |         |           |          |          |          | \$0       |
| 63A | The Academy of Moore County               |         |           | -\$138   | \$11,642 | \$11,977 | \$23,481  |
| 63B | Sandhills Theatre Arts Renaissance School | \$5,000 |           |          |          |          | \$5,000   |
| 63C | Moore Montessori Community School         |         |           |          |          |          | \$0       |
| 64A | Rocky Mount Preparatory School, Inc.      |         | \$14,445  | \$13,999 | \$6,311  | \$24,332 | \$59,087  |
| 64B | Global Achievers School                   |         |           |          |          |          | \$0       |
| 65A | Cape Fear Center for Inquiry              |         | \$17,321  | \$4,571  | \$6,203  | \$12,322 | \$40,417  |
| 65B | Wilmington Preparatory Academy            | \$5,000 |           |          |          |          | \$5,000   |
| 65C | Douglass Academy                          |         |           | \$4,101  | \$3,637  | \$10,505 | \$18,243  |
| 65D | Island Montessori Charter School          |         |           | -\$138   | \$6,203  | \$12,338 | \$18,403  |
| 65F | Coastal Preparatory Academy               |         |           | \$4,925  | \$6,845  | \$10,979 | \$22,749  |

## Draft Pending Approval

|     |   |          |          |          |          |          |           |
|-----|---|----------|----------|----------|----------|----------|-----------|
| 65G | Girls Leadership Academy of Wilmington                  |          | \$5,979  | \$5,537  | \$6,203  | \$12,060 | \$29,779  |
| 66A | KIPP Gaston College Preparatory                         | \$5,000  |          | \$3,750  |          | \$10,593 | \$19,343  |
| 67B | Z.E.C.A. School of Arts and Technology                  | \$487    |          | \$5,996  | \$6,203  | \$13,084 | \$25,770  |
| 68A | Eno River Academy                                       | \$10,470 | \$27,294 | \$9,246  | \$8,896  | \$15,304 | \$71,210  |
| 68C | The Expedition School                                   | \$1,800  | \$15,178 | -\$179   |          | \$11,638 | \$28,437  |
| 69A | Arapahoe Charter School                                 |          |          | -\$179   |          | \$15,304 | \$15,125  |
| 70A | Northeast Academy for Aerospace & Advanced Technologies |          |          | \$5,996  | \$6,203  | \$12,720 | \$24,919  |
| 73A | Bethel Hill Charter                                     |          | \$4,654  | \$5,737  | \$6,203  | \$12,995 | \$29,589  |
| 73B | Roxboro Community School, Inc.                          |          | \$36,528 | \$13,999 | \$6,311  | \$24,332 | \$81,170  |
| 74B | Ignite Innovation Academy - Pitt                        |          |          | \$4,750  | \$5,726  | \$12,896 | \$23,372  |
| 74C | Winterville Charter Academy                             | \$5,000  |          |          |          |          | \$5,000   |
| 76A | Uwharrie Charter Academy                                |          | \$66,822 | -\$179   | \$6,203  | \$13,084 | \$85,930  |
| 78A | CIS Academy   |          |          | \$2,112  | \$6,203  | \$10,948 | \$19,263  |
| 78B | Southeastern Academy                                    |          |          | \$5,996  | \$6,203  | \$12,322 | \$24,521  |
| 79A | Bethany Community School                                |          | \$11,288 |          | \$8,103  | \$10,764 | \$30,155  |
| 80B | Essie Mae Kiser Foxx Charter School                     |          |          |          |          |          | \$0       |
| 81A | Thomas Jefferson Classical Academy                      |          |          | \$13,216 | \$7,339  | \$24,453 | \$45,008  |
| 81B | Lake Lure Classical Academy                             |          |          | \$5,996  | \$6,203  | \$12,322 | \$24,521  |
| 84B | Gray Stone Day School                                   |          | \$27,130 | \$13,999 | \$6,311  | \$23,707 | \$71,147  |
| 86T | Millennium Charter Academy                              | \$5,000  |          |          |          |          | \$5,000   |
| 87A | Mountain Discovery Charter School                       |          |          | \$4,101  | \$6,493  | \$10,920 | \$21,514  |
| 88A | Brevard Academy   |          |          | \$5,996  | \$6,203  | \$4,427  | \$16,626  |
| 90A | Union Academy Charter School                            |          | \$83,055 | \$13,866 | \$7,830  | \$24,371 | \$129,122 |
| 90B | Union Day School  | \$5,000  |          |          |          |          | \$5,000   |
| 90C | Union Preparatory Academy at Indian Trail               | \$5,000  |          |          |          |          | \$5,000   |
| 91A | Vance Charter School                                    |          |          | -\$179   |          | \$17,529 | \$17,350  |
| 91B | Henderson Collegiate                                    | \$2,028  | \$10,478 | \$4,696  | \$6,203  | \$13,084 | \$36,489  |
| 92B | The Exploris School                                     |          |          | \$5,996  | \$6,203  | \$12,322 | \$24,521  |
| 92D | The Magellan Charter School                             |          |          | \$5,996  | \$6,203  | \$12,322 | \$24,521  |
| 92E | Sterling Montessori Academy                             |          | \$22,861 | \$5,996  | \$6,203  | \$12,322 | \$47,382  |
| 92F | Franklin Academy  | \$5,000  |          |          |          |          | \$5,000   |
| 92G | East Wake Academy                                       |          |          | \$19,624 | \$12,843 | \$36,729 | \$69,196  |
| 92K | Raleigh Charter High School                             |          |          | \$5,996  | \$6,203  | \$12,322 | \$24,521  |
| 92L | Torchlight Academy                                      | \$1,290  |          | -\$179   | \$6,203  | \$12,322 | \$19,636  |
| 92M | PreEminent Charter School                               | \$5,000  |          |          |          |          | \$5,000   |
| 92N | Quest Academy   | \$5,000  |          |          |          |          | \$5,000   |
| 92P | Southern Wake Academy                                   |          |          | \$12,566 | \$7,339  | \$21,805 | \$41,710  |
| 92Q | Hope Charter Leadership Academy                         |          |          | \$4,875  | \$6,203  | \$11,661 | \$22,739  |
| 92R | Casa Esperanza Montessori Charter School                |          |          | \$5,996  | \$6,203  | \$12,322 | \$24,521  |
| 92S | Endeavor Charter  |          | \$9,047  | \$5,996  | \$6,203  | \$13,115 | \$34,361  |
| 92T | Triangle Math and Science Academy                       |          |          | \$14,191 | \$6,311  | \$27,354 | \$47,856  |
| 92U | Longleaf School of the Arts                             |          | \$6,641  | -\$138   | \$6,326  | \$28,303 | \$41,132  |
| 92V | Wake Forest Charter Academy                             | \$5,000  |          |          |          |          | \$5,000   |
| 92W | Cardinal Charter Academy                                | \$5,000  |          |          |          |          | \$5,000   |

## Draft Pending Approval

|         |   |         |  |          |          |          |          |
|---------|---|---------|--|----------|----------|----------|----------|
| 92Y     | Envision Science Academy                            | \$3,222 |  | \$9,966  | \$6,203  | \$14,783 | \$34,174 |
| 93A     | Haliwa-Saponi Tribal School                         |         |  | \$5,996  | \$6,203  | \$13,084 | \$25,283 |
| 93J     | PAVE Southeast Raleigh Charter School               |         |  | \$4,737  | \$6,203  | \$10,948 | \$21,888 |
| 93L     | Central Wake High School                            |         |  | -\$138   |          | \$10,948 | \$10,810 |
| 93M     | Peak Charter Academy                                | \$5,000 |  |          |          |          | \$5,000  |
| 93N     | Pine Springs Preparatory Academy                    |         |  | \$4,550  | \$7,364  | \$10,082 | \$21,996 |
| 93P     | Rolesville Charter Academy                          |         |  |          |          |          | \$0      |
| 93R     | Raleigh Oak Charter School                          |         |  |          |          |          | \$0      |
| 95A     | Two Rivers Community School                         |         |  | \$5,996  | \$6,203  | \$12,322 | \$24,521 |
| 96C     | Dillard Academy Charter School                      | \$5,000 |  | \$3,000  | \$6,326  | \$8,073  | \$22,399 |
| 96F     | Wayne Preparatory Academy                           |         |  | \$5,996  | \$6,203  | \$12,322 | \$24,521 |
| 97D     | Bridges Academy                                     |         |  | \$4,737  | \$6,203  | \$11,655 | \$22,595 |
| 98A     | Sallie B Howard School for the Arts and Education   | \$2,408 |  |          |          |          | \$2,408  |
| 98B     | Wilson Preparatory Academy                          |         |  | \$11,916 |          | \$20,183 | \$32,099 |
| 94Z     | Northeast Regional School for Biotech & Agriculture |         |  | \$5,996  | \$6,203  | \$13,084 | \$25,283 |
| 298A    | North Carolina School for Deaf                      |         |  | \$4,366  | \$6,203  | \$14,783 | \$25,352 |
| 298B    | Eastern NC School for the Deaf                      |         |  | \$4,366  | \$8,103  | \$13,846 | \$26,315 |
| 298C    | Gov. Morehead School for the Blind                  |         |  | \$5,996  | \$6,203  | \$12,322 | \$24,521 |
| closed1 | Charlotte Community Charter                         |         |  | -\$124   | -\$493   | \$10,505 | \$9,888  |
| closed2 | SEGS Academy  |         |  |          | -\$1,021 |          | -\$1,021 |



---

**APPENDIX C - CONNECTIVITY STAFF SALARY REPORT**


---

The following table summarizes NCDPI positions paid from School Connectivity Initiative funding and their respective compensation and benefits.

| <b>Title of Position and Description of Duties</b>   | <b>Compensation &amp; Benefits</b> |
|--|------------------------------------|
| <u>Lead Connectivity and E-Rate Analyst:</u><br>provides LEA/Charter School Technical Consulting, Strategic Planning, Project Management | \$122,880                          |
| <u>Lead E-Rate Analyst:</u> provides LEA/Charter School Technical Consulting, Strategic Planning   | \$105,627                          |
| <u>E-Rate Program Administrator:</u> provides E-rate Education and Consultation Services   | \$89,910                           |
| <u>E-Rate Program Administrator:</u> provides E-rate Education and Consultation Services   | \$105,032                          |
| <u>Education Consultant II:</u> Assists with Digital Teaching and Learning Integration   | \$91,648                           |
| <u>Technology Support Center Analyst:</u><br>Provides help desk support for SCI related calls  | \$59,604                           |
| <b>Total</b>   | <b>\$574,701</b>                   |

**APPENDIX D – NORTH CAROLINA E-RATE FUNDING HISTORY REPORT**

The following report run in December 2018 shows North Carolina public school E-rate funding requests, the total pre-discount amount for all requested services, the amount of E-rate funding being requested, the amount of funding ultimately committed by the FCC, the amount of funding disbursed, and the utilization of funds (disbursed/committed). Note that there are still disbursements outstanding for 2017. For the 2018 E-rate funding year only 20% of the nearly \$64M in committed funding has been disbursed – this is typical as the funding year begins July 1. It is notable that in 2018, North Carolina reached a billion dollars in disbursed funds over the life of the E-rate program.

| Year | Pre-Discount           | Requested              | Committed              | Disbursed              | Requests      | Utilization % |
|------|------------------------|------------------------|------------------------|------------------------|---------------|---------------|
| 1998 | \$44,388,023           | \$28,969,621           | \$21,511,196           | \$17,384,524           | 3,041         | 81%           |
| 1999 | \$48,447,701           | \$33,670,538           | \$28,605,610           | \$24,649,511           | 1,845         | 86%           |
| 2000 | \$60,099,851           | \$41,708,939           | \$20,915,884           | \$17,740,889           | 2,217         | 85%           |
| 2001 | \$61,576,928           | \$44,222,112           | \$20,166,017           | \$16,038,416           | 2,223         | 80%           |
| 2002 | \$79,865,118           | \$62,473,202           | \$48,117,223           | \$39,646,446           | 1,952         | 82%           |
| 2003 | \$97,322,227           | \$75,814,000           | \$45,339,691           | \$37,042,927           | 2,076         | 82%           |
| 2004 | \$78,681,640           | \$57,991,959           | \$37,480,433           | \$30,336,639           | 2,294         | 81%           |
| 2005 | \$96,225,151           | \$72,072,864           | \$51,030,249           | \$43,984,441           | 2,359         | 86%           |
| 2006 | \$110,422,492          | \$85,459,610           | \$47,416,846           | \$40,370,952           | 1,411         | 85%           |
| 2007 | \$100,873,061          | \$77,535,432           | \$57,375,873           | \$49,861,383           | 1,733         | 87%           |
| 2008 | \$91,853,896           | \$70,357,708           | \$55,825,752           | \$50,540,986           | 1,269         | 91%           |
| 2009 | \$98,564,976           | \$75,486,810           | \$60,550,806           | \$52,875,403           | 1,180         | 87%           |
| 2010 | \$109,844,062          | \$86,202,227           | \$77,860,744           | \$66,523,395           | 1,272         | 85%           |
| 2011 | \$129,276,499          | \$103,538,353          | \$71,542,675           | \$63,982,881           | 1,297         | 89%           |
| 2012 | \$141,222,995          | \$112,992,758          | \$80,285,729           | \$71,645,193           | 1,153         | 89%           |
| 2013 | \$128,365,669          | \$103,194,369          | \$67,470,997           | \$60,547,108           | 1,108         | 90%           |
| 2014 | \$130,569,310          | \$103,776,157          | \$68,598,967           | \$60,510,973           | 1,170         | 88%           |
| 2015 | \$148,116,937          | \$112,217,368          | \$107,496,924          | \$103,002,672          | 1,828         | 96%           |
| 2016 | \$143,117,525          | \$101,666,036          | \$96,997,482           | \$88,793,741           | 1,411         | 92%           |
| 2017 | \$94,265,531           | \$62,956,696           | \$60,149,898           | \$51,895,454           | 1,051         | 86%           |
| 2018 | \$90,646,128           | \$65,488,115           | \$63,986,122           | \$12,633,438           | 1,160         | 20%           |
|      | <b>\$2,083,745,722</b> | <b>\$1,577,794,871</b> | <b>\$1,188,725,120</b> | <b>\$1,000,007,373</b> | <b>35,050</b> |               |