



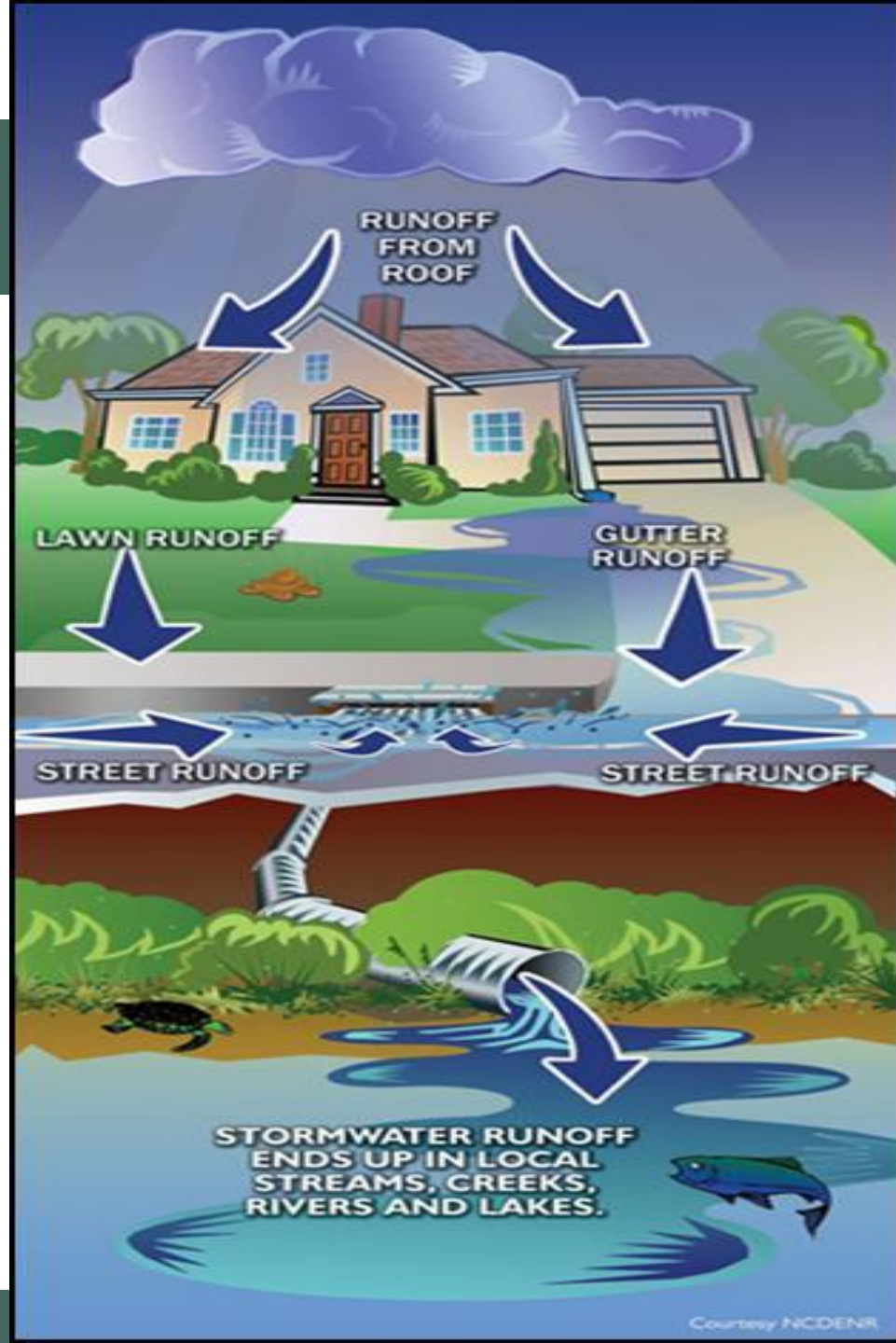
Post-Construction Stormwater Management

Department of Environmental Quality



What is Stormwater Runoff?

Department of Environmental Quality



Why do we try to control & treat stormwater runoff?

- Stormwater runoff is a non-point source of pollutants
- Runoff from developed areas can contain pollutants
 - Nutrients
 - Heavy metals
 - Oil & grease
- Control and treatment of stormwater runoff is accomplished through Post Construction Stormwater Controls
 - Also called Stormwater Best Management Practices (BMPs)
- Post construction stormwater controls are often mandated in areas with sensitive waters
 - Outstanding resource water
 - Water supply watersheds
 - Coastal areas
- Post-construction stormwater controls are also often a component of TMDLs and nutrient management strategies
- Use of Stormwater BMPs triggered by development density
 - 24% development density [24% Built Upon Area (BUA)]



Common Stormwater Control Devices - BMPs



Infiltration Devices

- Infiltration devices soak stormwater into the ground to address pollution AND flooding issues.



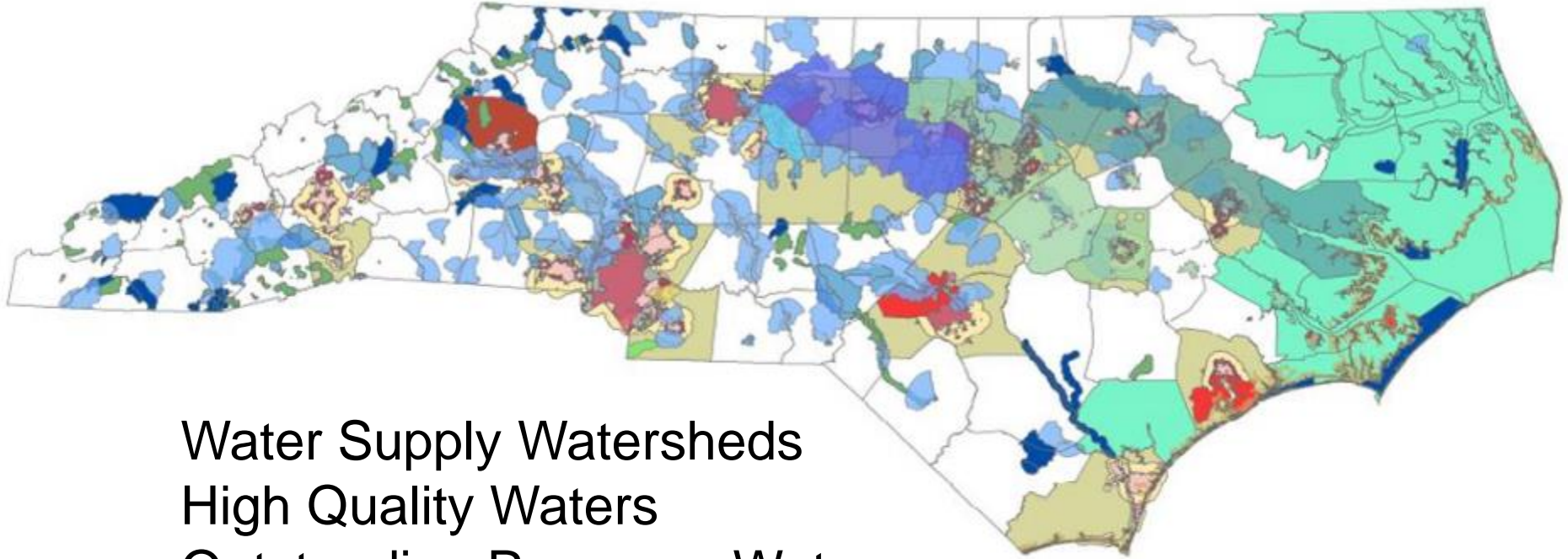
Wet ponds



Bioretention Cell

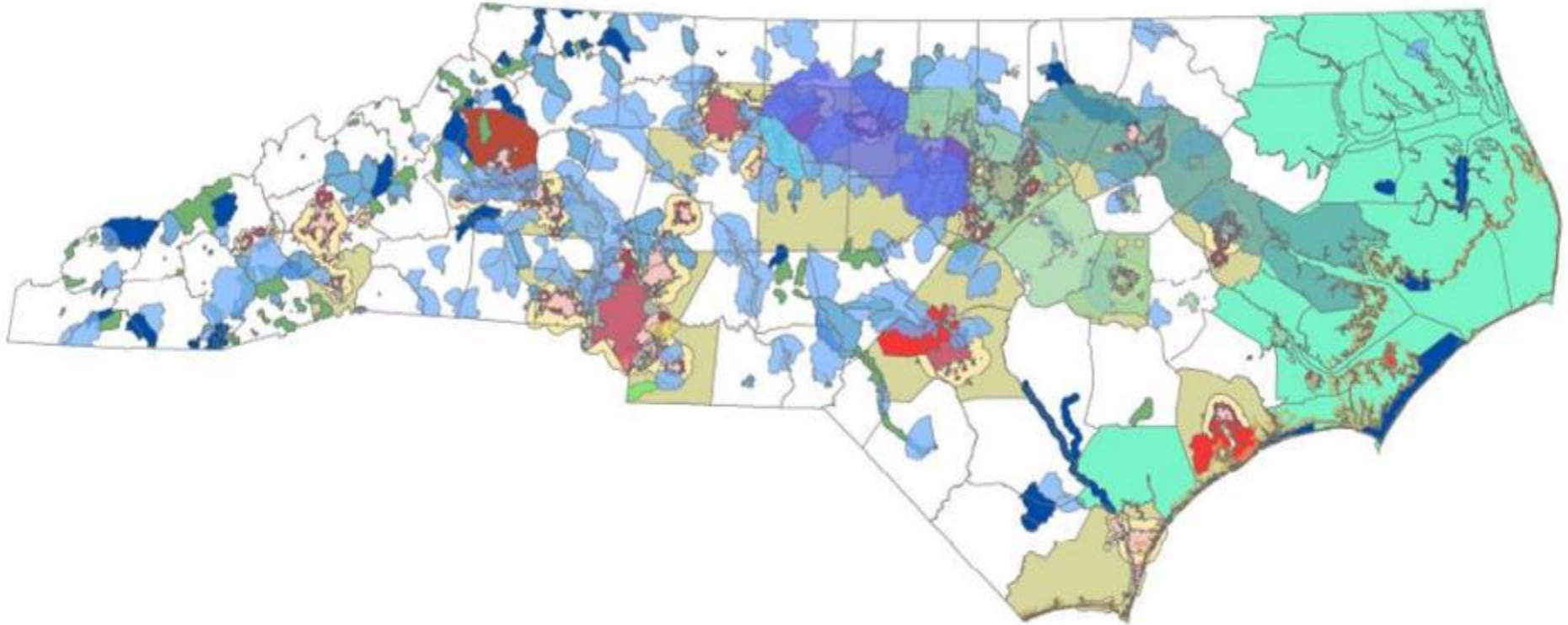


NC Stormwater Management Programs



Water Supply Watersheds
High Quality Waters
Outstanding Resource Waters
Coastal Stormwater
Nutrient Sensitive Waters
NPDES Phase I & II

Stormwater BMPs Required in Other Areas if a 401 Certification is needed for Project



- Required for any federally permitted or licensed activity that may result in a discharge to waters of the U.S.
 - Required for impacts to streams & wetlands
 - NC requires post construction stormwater controls for all projects obtaining a 401 certification that contain 24% development density
 - Even in those areas in which stormwater controls are not normally mandated
 - Required in addition to mitigation for wetland and stream impacts

Other States

- South Carolina requires stormwater controls for 401 certifications issued only in the coastal region
- Virginia requires stormwater controls for some 401 certifications for the purposes of flow/flood control rather than water quality



Questions Moving Forward

- Review of other states' policies?
 - Distinction between stream & wetlands impacts?
- Are these additional stormwater controls needed in areas without water quality management strategies?
 - In addition to stream & wetlands mitigation already required?
- Needed for impacts to wetlands only?
- Should 24% development density threshold be reconsidered?

