

# **Environmental Review Commission**

## **Drought Update**

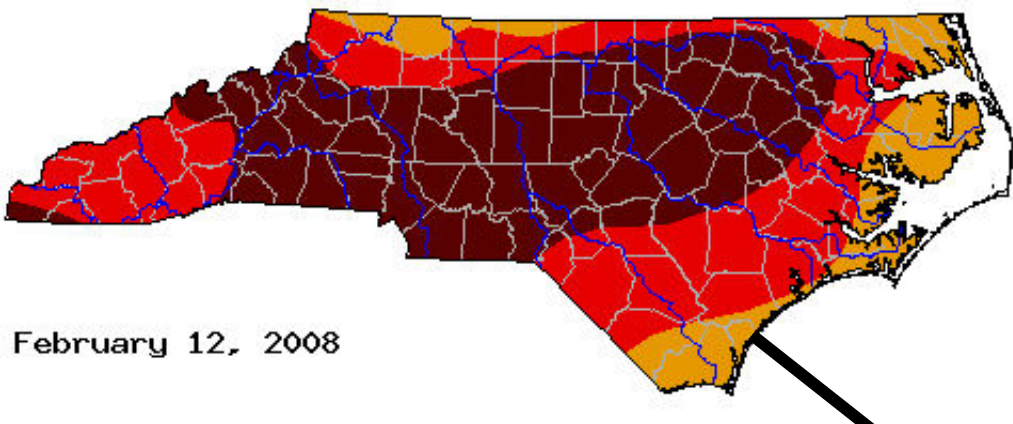
Division of Water Resources

March 18, 2008



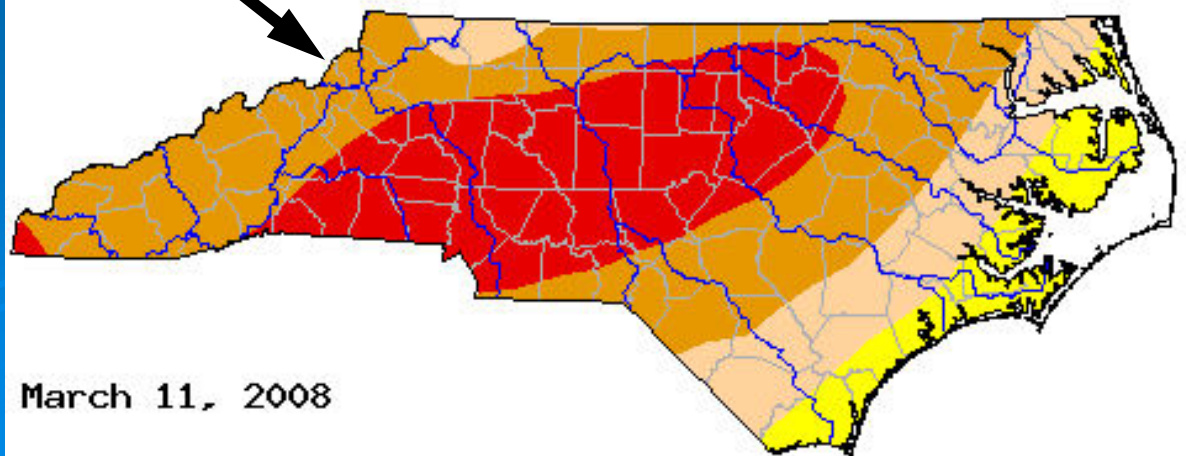
# Current Conditions Drought Monitor

Last Month's Map



February 12, 2008

This Week's Map



March 11, 2008

## Unofficial Rainfall Estimates

### Feb 15, 2008 through Mar 15, 2008

	Total Rainfall	Departure from Normal	Pct of Normal	Rank	Driest on Record
North Carolina Statewide	4.25"	0.07	102%	34th wettest	0.98" (1929)

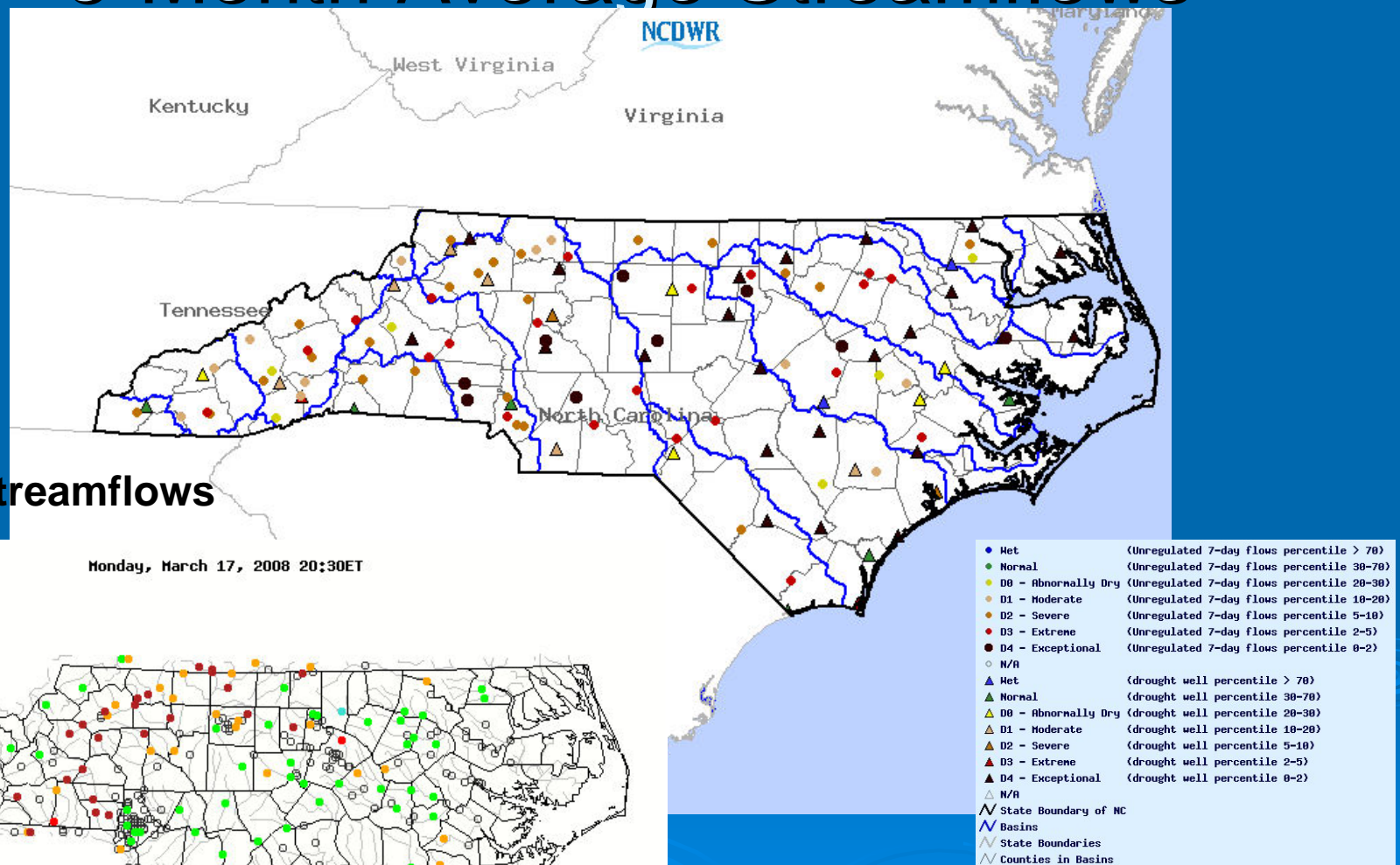
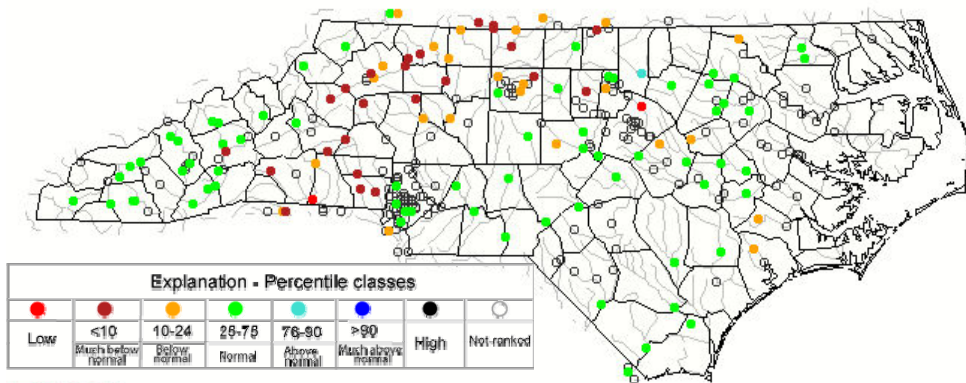
### 365-Day Precip for North Carolina Mar 17, 2007 through Mar 15, 2008

	Total Rainfall	Departure from Normal	Pct of Normal	Rank	Driest on Record
North Carolina Statewide	35.93"	-14.36	71%	1st driest	38.01" (30-31)

# Current Ground Water Levels 6-Month Average Streamflows

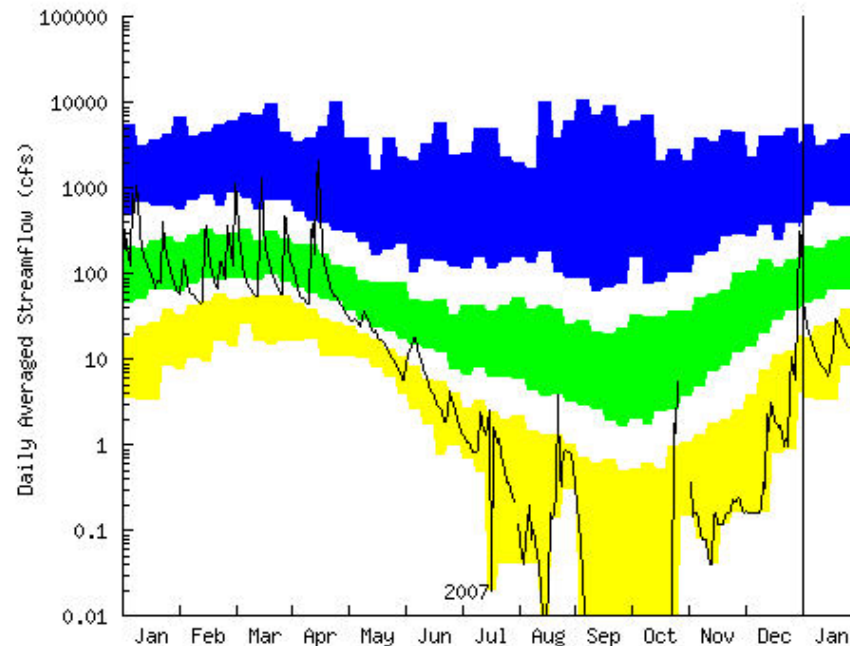
## Current Streamflows

Monday, March 17, 2008 20:30ET



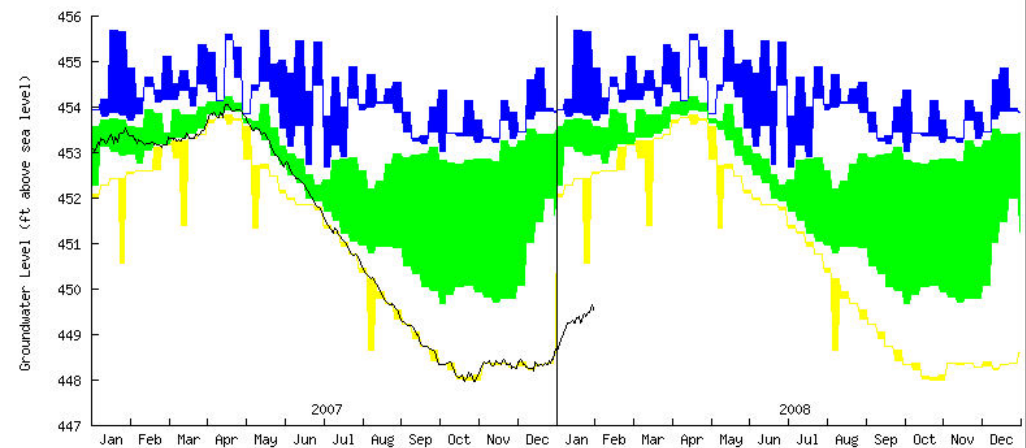
# Tar River Basin

Station 02081500 - TAR RIVER NEAR TAR RIVER, NC  
(10/01/1939 -- 12/31/2007)



■ BLUE (UPPER) BAND = 90- TO 100-PERCENTILE FLOWS (VERY WET CONDITIONS)  
■ GREEN (MIDDLE) BAND = 25- TO 75-PERCENTILE FLOWS (NORMAL CONDITIONS)  
■ YELLOW (LOWER) BAND = 0- TO 10-PERCENTILE FLOWS (VERY DRY CONDITIONS)  
Daily flows less than or equal to zero are set to 0.01 cfs.  
Overlay Time Series: Daily Data

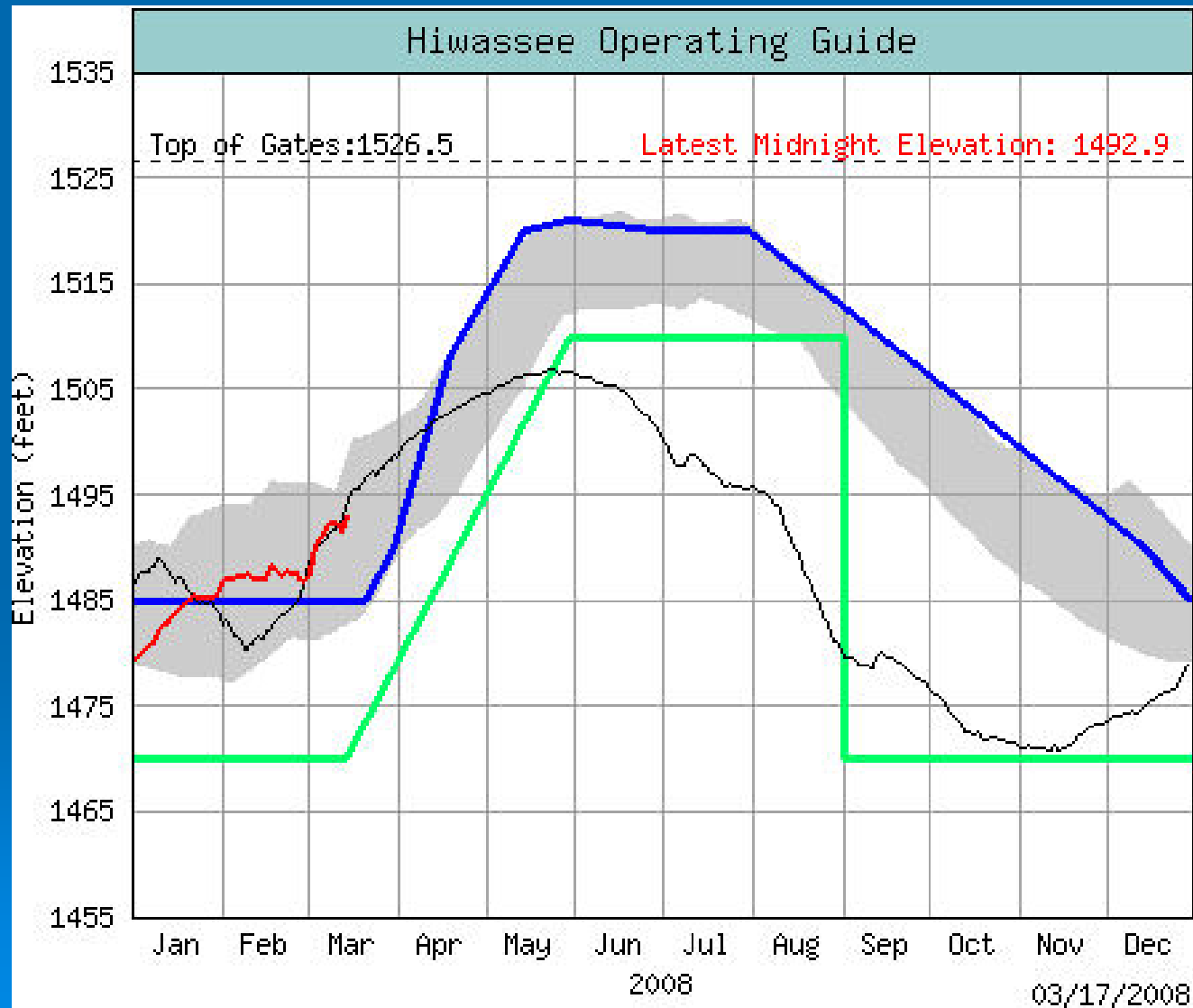
Station E 38F1 - Oxford  
(1/01/1905 -- 12/31/2007)



■ BLUE (UPPER) BAND = 90- TO 100-PERCENTILE FLOWS (VERY WET CONDITIONS)  
■ GREEN (MIDDLE) BAND = 25- TO 75-PERCENTILE FLOWS (NORMAL CONDITIONS)  
■ YELLOW (LOWER) BAND = 0- TO 10-PERCENTILE FLOWS (VERY DRY CONDITIONS)  
Overlay Time Series: Daily Data



# Reservoir Refill

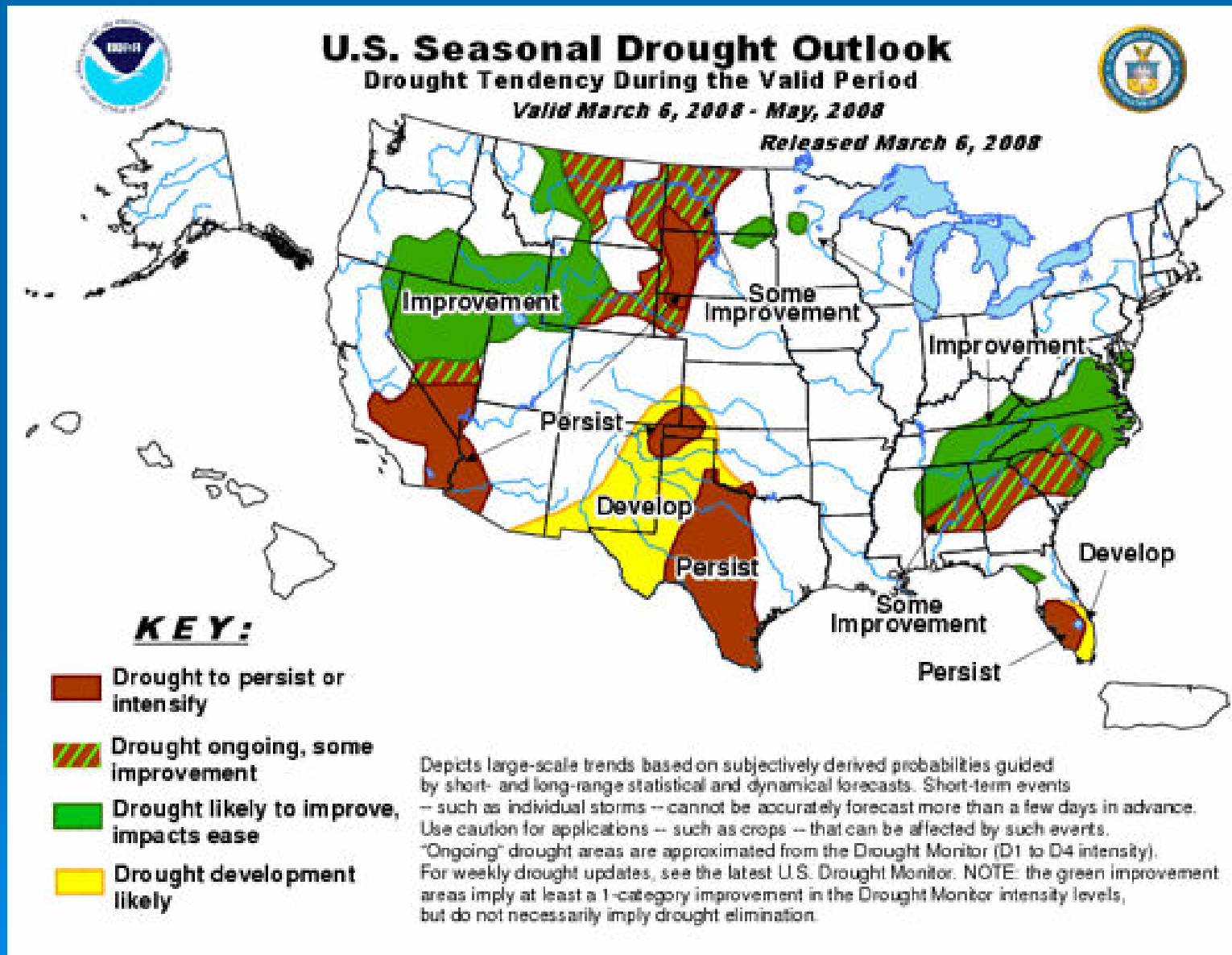


# Current Conditions Public Water Supply Systems

## Water Conservation level summary data

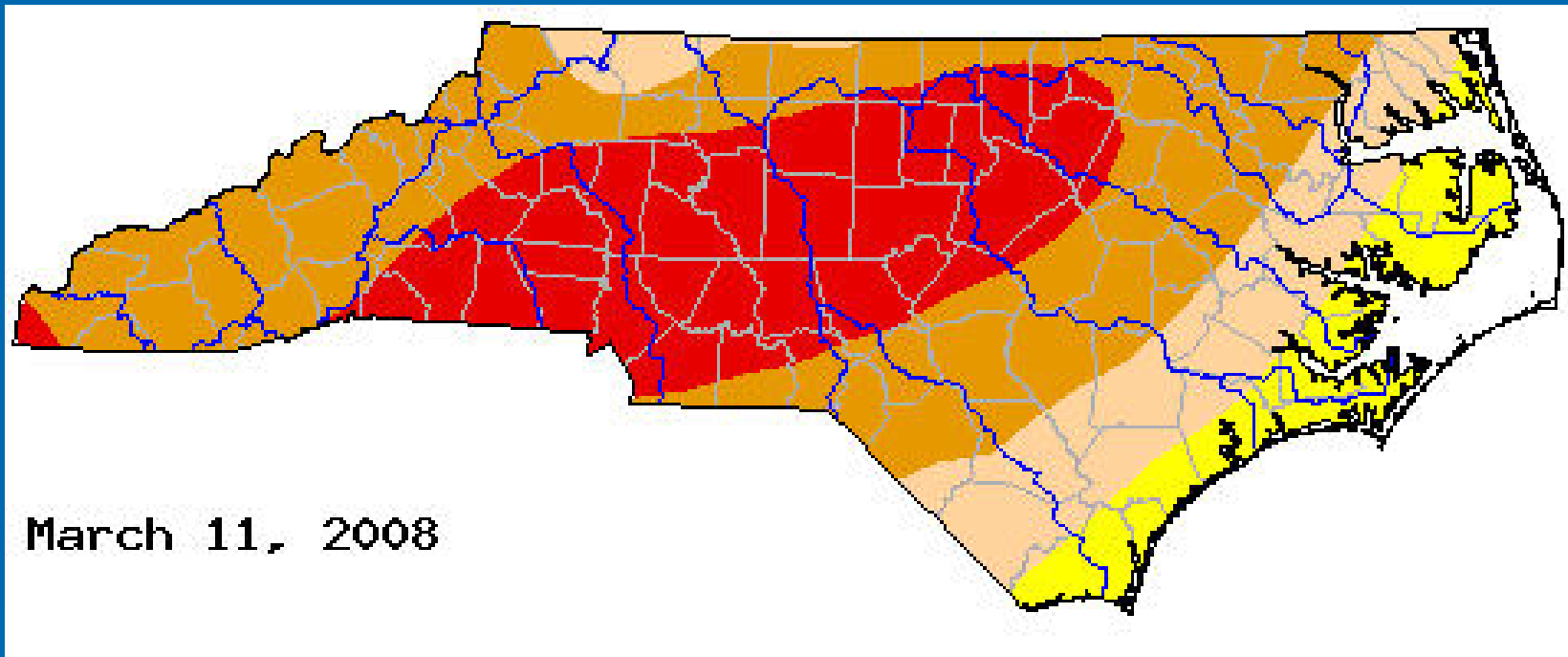
Status	Systems		Population	
	Number	Percent	Number	Percent
Not Restricted	280	44.59	1,215,620	17.93
Voluntary Conservation	173	27.55	1,866,212	27.52
Mandatory Conservation	175	27.87	3,699,340	54.55
Emergency	0	0.00	0	0.00
Total	628		6,781,172	

# Forecast





# Questions



- NC Drought Management Advisory Council -  
<http://www.ncdrought.org/>
- Water Sources Task Force -  
[http://www.ncwater.org/Drought\\_Monitoring/wstaskforce.php](http://www.ncwater.org/Drought_Monitoring/wstaskforce.php)
- Weekly Water -  
[http://www.ncwater.org/Drought\\_Monitoring/reduction/weeklyreport.php](http://www.ncwater.org/Drought_Monitoring/reduction/weeklyreport.php)