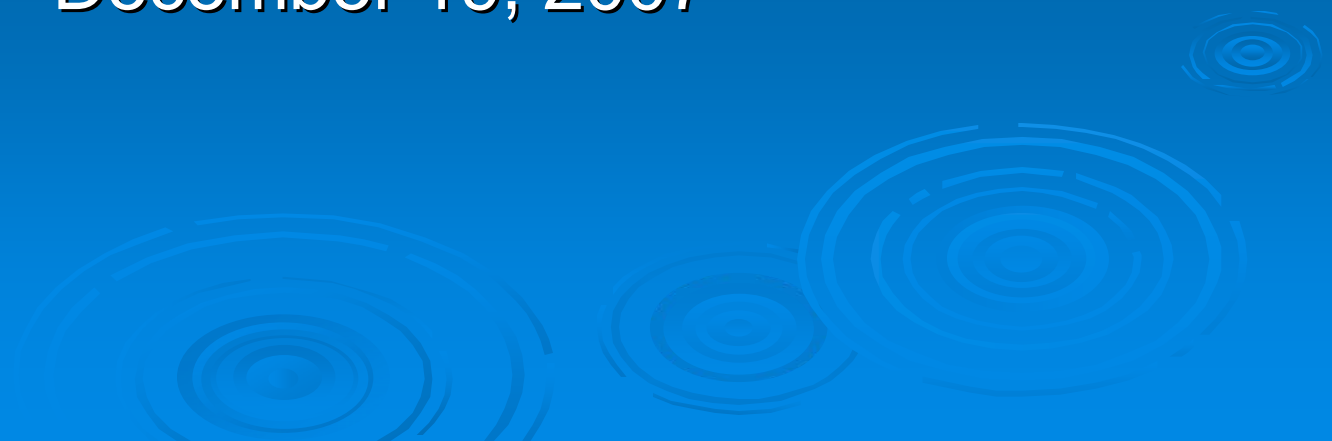


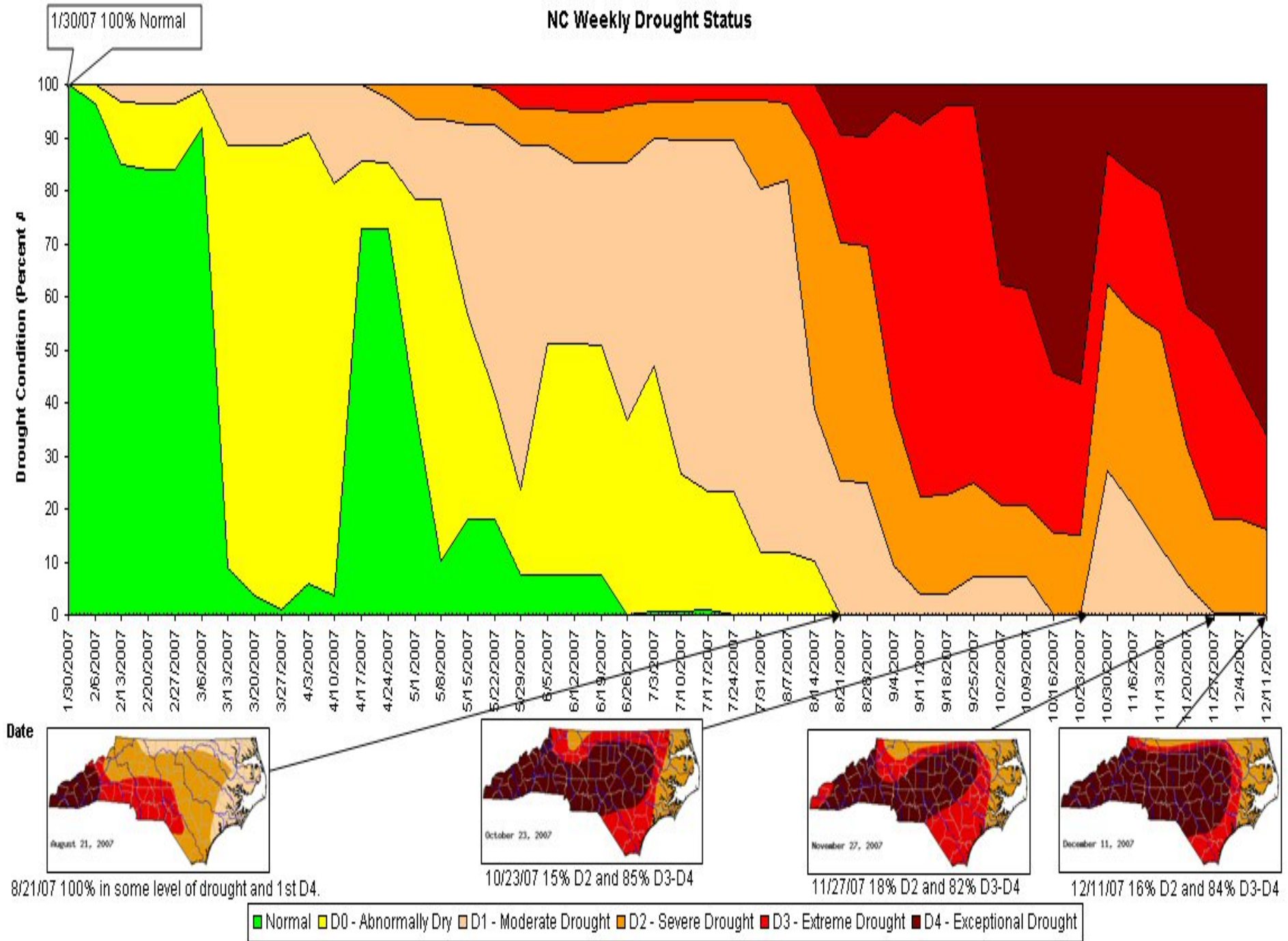
# **Environmental Review Commission**

## **Drought Update**

Division of Water Resources  
December 19, 2007



# NC Weekly Drought Status



# Unofficial Rainfall Estimates

## No 17, 2007 through Dec 16, 2007

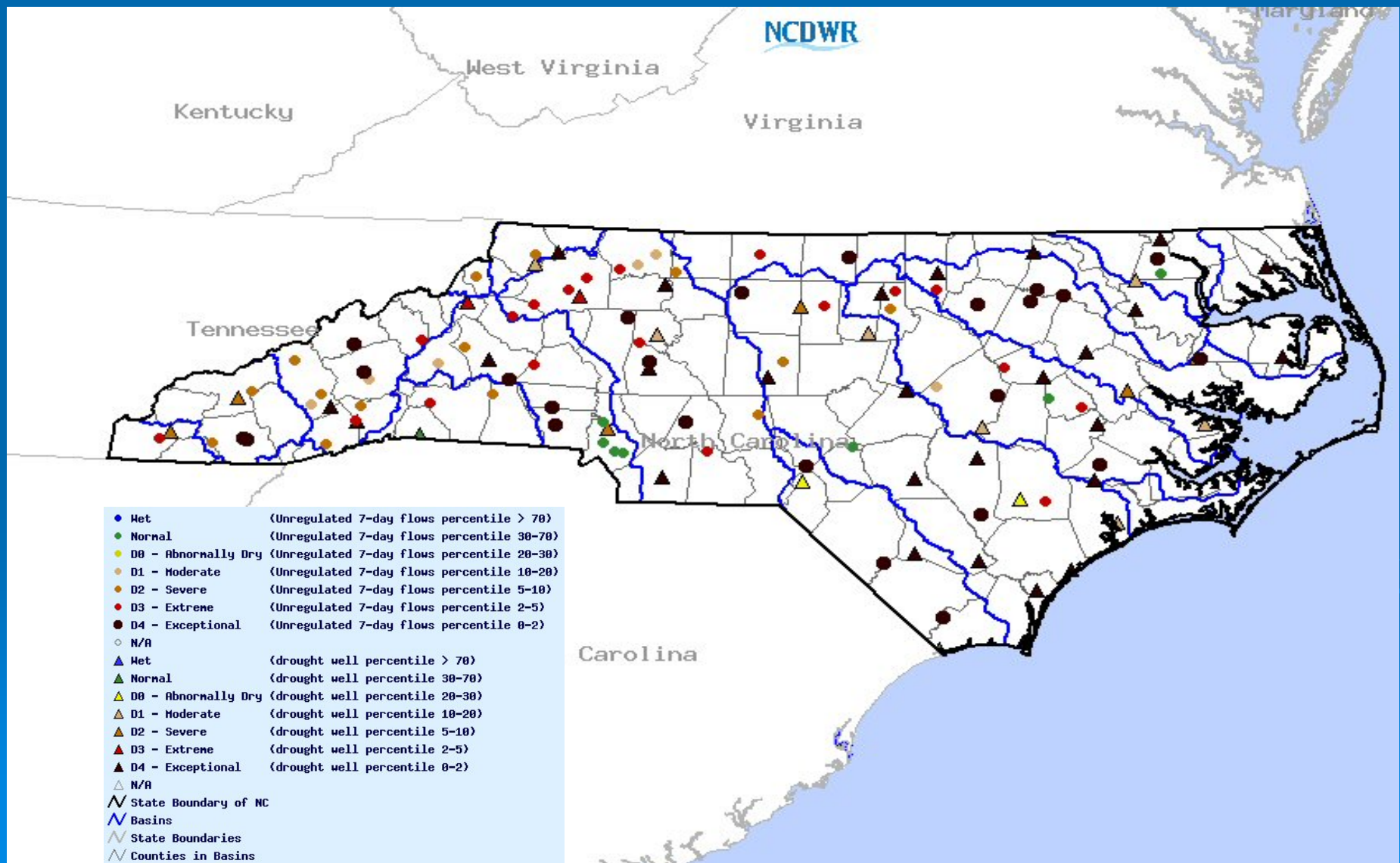
	Total Rainfall	Departure from Normal	Pct of Normal	Rank	Driest on Record
North Carolina Statewide	1.79"	-1.67	52%	8th driest	0.85" (1933)

## 180-Day Precip for North Carolina Jun 20, 2007 through Dec 16, 2007

	Total Rainfall	Departure from Normal	Pct of Normal	Rank	Driest on Record
North Carolina Statewide	16.12"	-8.89	64%	1st driest	18.21" (2001)

# Current Conditions

## Ground Water Levels & Streamflows





# Current Conditions Drought Monitor

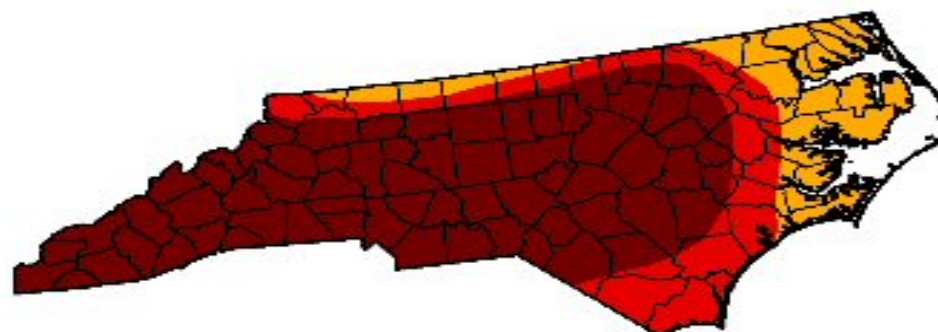
## U.S. Drought Monitor North Carolina

December 11, 2007

Valid 7 a.m. EST

Drought Conditions (Percent Area)

	None	D0-D4	D1-D4	D2-D4	D3-D4	D4
Current	0.0	100.0	100.0	100.0	84.0	66.2
Last Week (12/04/2007 map)	0.0	100.0	100.0	99.5	81.9	56.2
3 Months Ago (09/18/2007 map)	0.0	100.0	100.0	96.2	77.4	4.0
Start of Calendar Year (01/02/2007 map)	98.5	1.5	0.0	0.0	0.0	0.0
Start of Water Year (10/02/2007 map)	0.0	100.0	100.0	92.8	79.4	37.7
One Year Ago (12/12/2006 map)	100.0	0.0	0.0	0.0	0.0	0.0



### Intensity:

- D0 Abnormally Dry
- D1 Drought - Moderate
- D2 Drought - Severe
- D3 Drought - Extreme
- D4 Drought - Exceptional

The Drought Monitor focuses on broad-scale conditions.  
Local conditions may vary. See accompanying text summary  
for forecast statements

<http://drought.unl.edu/dm>



Released Thursday, December 13, 2007

Author: Brian Fuchs, National Drought Mitigation Center

# Current Conditions

## Public Water Supply Systems

### Water Conservation level summary data

Status	Systems		Population	
	Number	Percent	Number	Percent
Not Restricted	292	46.50	1,331,621	19.64
Voluntary Conservation	163	25.96	1,683,363	24.82
Mandatory Conservation	173	27.55	3,766,188	55.54
Emergency	0	0.00	0	0.00
Total	628		6,781,172	

# Tier 1

## Public Water Supply Systems

	Facility	Population	County	River Basin
1	Bessemer City	5,318	GASTON	Catawba River
2	Blowing Rock	1,637	WATAUGA	New River
3	Boone	16,406	WATAUGA	New River
4	Durham	287,000	DURHAM	Neuse River
5	Hendersonville	47,442	HENDERSON	French Broad River
6	Lenoir	21,676	CALDWELL	Catawba River
7	Mars Hill	4,350	MADISON	French Broad River
8	Marshall	1,326	MADISON	French Broad River
9	Monroe	31,234	UNION	Yadkin River
10	Raleigh	409,542	WAKE	Neuse River
11	Robbinsville	2,895	GRAHAM	Little Tennessee River
12	Tryon	5,512	POLK	Broad River
13	Valdese	5,922	BURKE	Catawba River
14	Yadkinville	5,001	YADKIN	Yadkin River

845,261

# Public Water Supply Systems

## Weekly Water Use Reduction Compared to August

System	<u>2007-12-10</u>	<u>2007-12-03</u>	<u>2007-11-26</u>	<u>2007-11-19</u>
Charlotte-Mecklenburg		-36.79%	-38.79%	-40.78%
Raleigh	-35.22%	-36.06%	-34.99%	-37.33%
Durham		-39.98%	-37.23%	-38.34%
Winston-Salem	-24.98%		-28.49%	-31.47%
Greensboro		-29.42%	-29.55%	-35.49%
Fayetteville	-35.37%	-35.76%	-36.62%	-35.09%
Onslow County		-21.95%	-22.67%	-17.96%
Davidson Water	-30%	-32.61%	-27.93%	-30.28%
Wilmington	-49.56%			-50.84%
Cary	-40.42%	-40.63%	-43.16%	-45.13%
Asheville			-13.24%	-13.05%

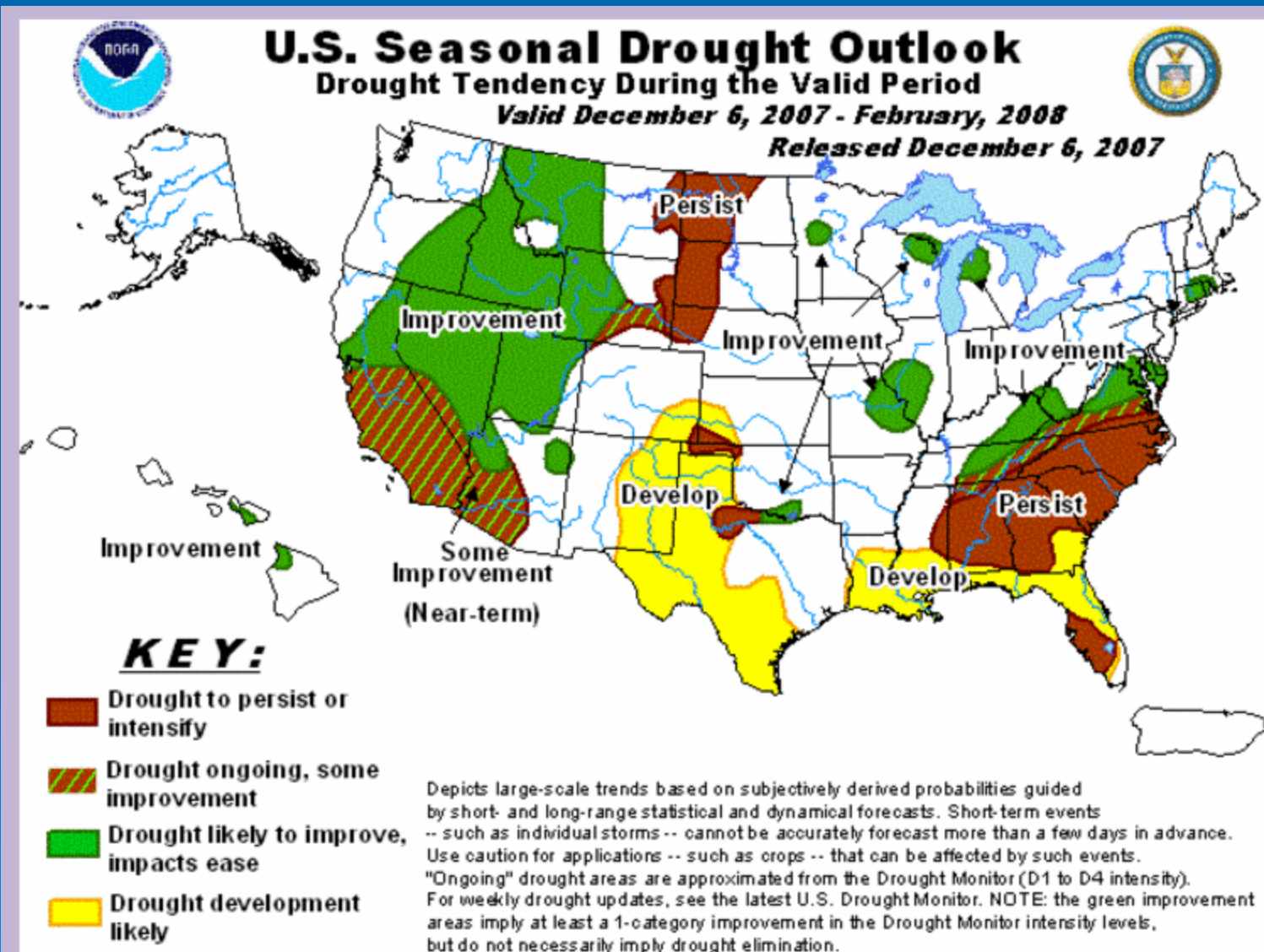


# Water Sources Task Force

[http://www.ncwater.org/Drought\\_Monitoring/wstaskforce.php](http://www.ncwater.org/Drought_Monitoring/wstaskforce.php)

Co un ty	Current Adviso ry	Emer genc y Water Restr ictions	Voluntary Water Restrictions	Mandatory Water Restrictions	Ti er 1	Ti er 2	Affe cted Pop ulation	Current Weekly Water Use (% Change from last week)
W AK E	Excepti onal (D4)		<a href="#">Bayleaf/Stonebridge</a> (Drought) <a href="#">JAMISON PARK</a> <a href="#">S/D</a> (Drought) <a href="#">RIDGEBROOK</a> <a href="#">BLUFF S/D</a> (Drought) <a href="#">Wake County/RTP</a> <a href="#">South</a> (Other)	<a href="#">Apex</a> (Other) <a href="#">Cary</a> (Other) <a href="#">Holly Springs</a> (Drought) <a href="#">Knightdale</a> (Other) <a href="#">Morrisville</a> (Other) <a href="#">Raleigh</a> (Drought) <a href="#">SUN RIDGE</a> <a href="#">FARM S/D</a> (Drought) <a href="#">Wake Forest</a> (Other) <a href="#">Wendell</a> (Other) <a href="#">Zebulon</a> (Other)			618, 674	<a href="#">Apex</a> 2,250,714 (- 1.29%) <a href="#">Cary</a> 10,045,714 (+0.36%) <a href="#">Holly Springs</a> 1,530,000 (+1.32%) <a href="#">Morrisville</a> 1,535,714 (+1.13%) <a href="#">Raleigh</a> 40,628,571 (+1.32%) <a href="#">Wake County/RTP</a> <a href="#">South</a> 447,143 (+1.29%)

# Forecast

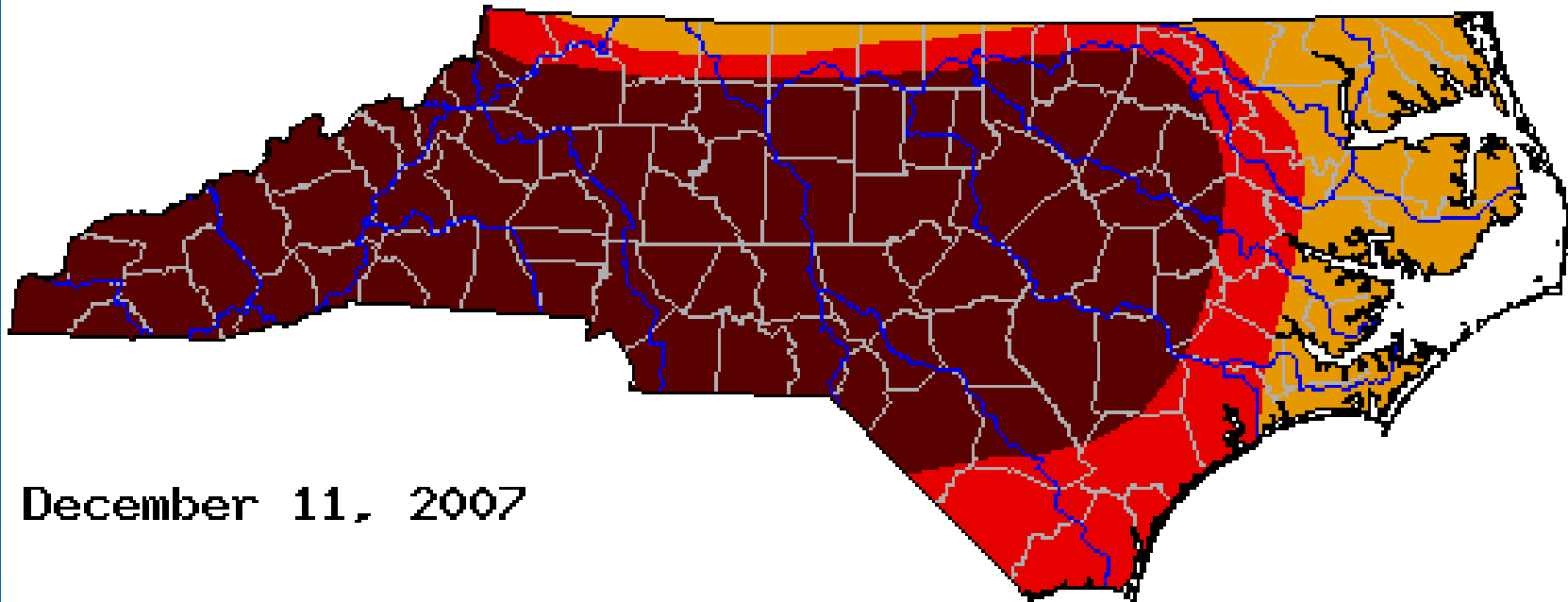


# Corps Projects

## Current Conditions

	Total			Dist.		Inflow
	Dec.		Guide	Below	Avg.	Per-
	Rain	17 Dec	Curve	Guide	Dec	cent
	fall	Level	Level	Curve	Inflow	of
<u>Lake</u>	<u>Inch</u>	<u>ft-msl</u>	<u>ft-msl</u>	<u>Feet</u>	<u>cfs</u>	<u>Normal</u>
Falls	1.20	241.7	251.5	-9.8	51	9
Jordan	1.18	211.7	216.0	-4.3	180	13
Scott	0.85	1028.7	1030.0	-1.3	150	27
Kerr	1.10	294.2	295.5	-1.3	1,874	28

# Questions



- NC Drought Management Advisory Council -  
<http://www.ncdrought.org/>
- Water Sources Task Force -  
[http://www.ncwater.org/Drought\\_Monitoring/wstaskforce.php](http://www.ncwater.org/Drought_Monitoring/wstaskforce.php)