



Annual Update for Environmental Review Commission

Lisa Riegel

Executive Director

(919) 715-8014

April 7, 2008

MISSION

protect natural & cultural heritage lands

- Recreation, scientific, education, cultural and aesthetic purposes
- Additions to state parks, trails, forests, wildlife areas
- Historic properties program
- Other beneficial use and enjoyment by the public



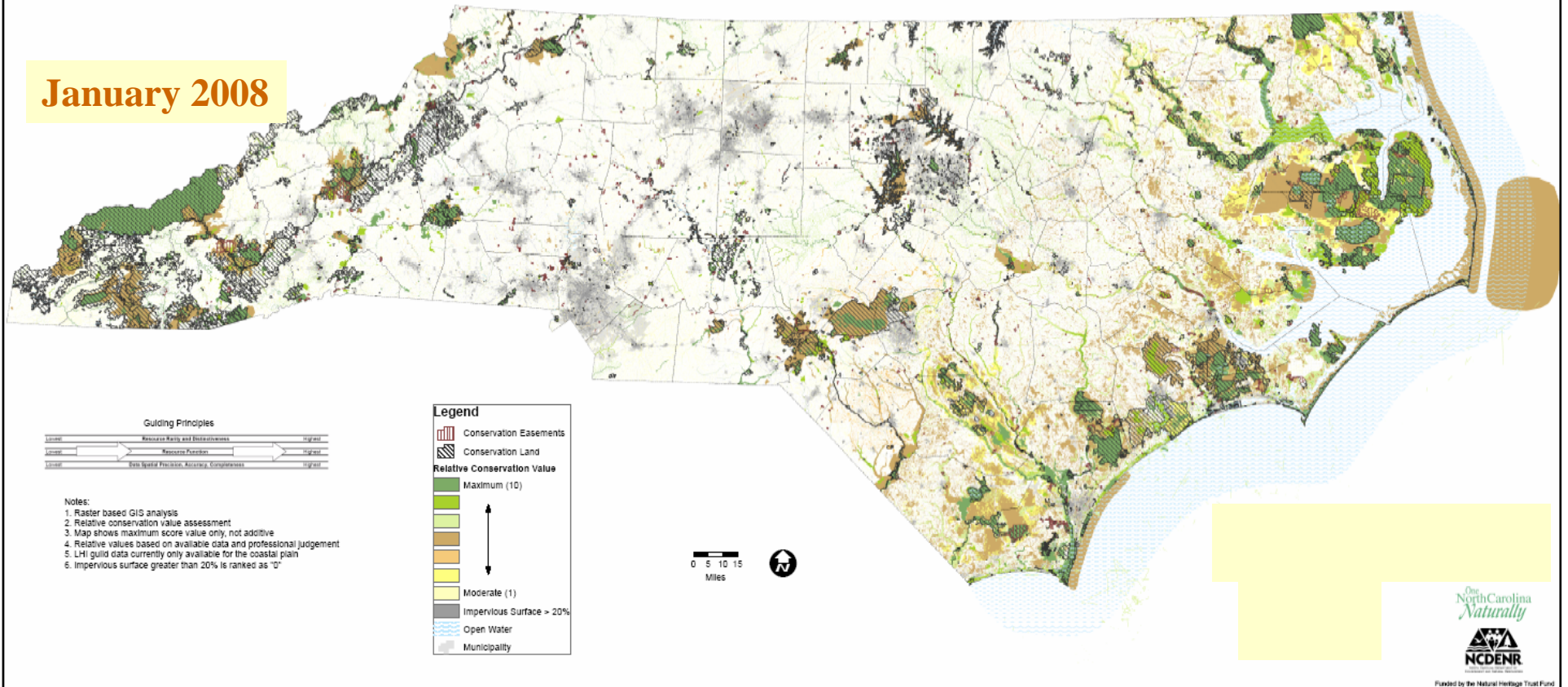
Natural Heritage Program

- ID most important natural areas in state
- 83 of 100 Counties complete; 6 ongoing
- Statewide Conservation Planning Tool (Map)



One NC *Naturally* Conservation Planning Tool

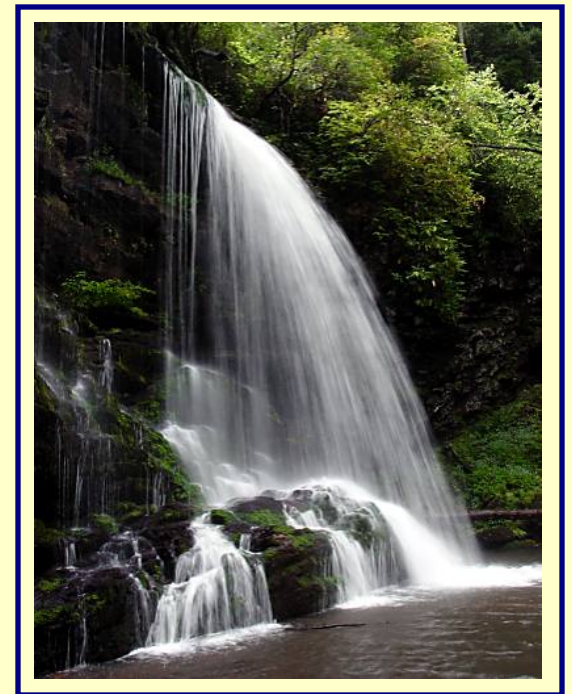
January 2008



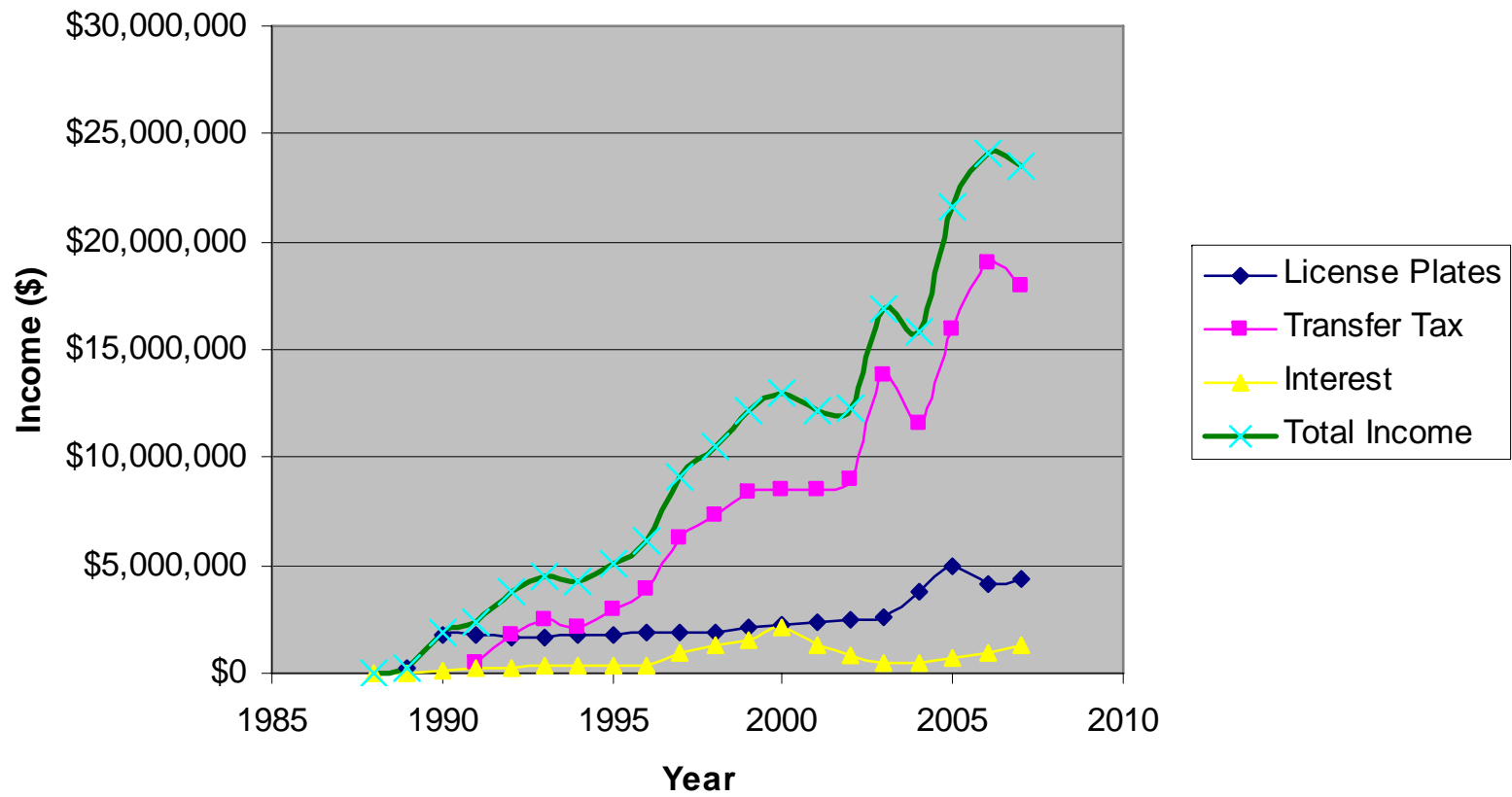
Biodiversity / Wildlife Habitat Assessment

Program Overview

- Established 1987
- 12 member citizen board
- Accepts applications from
4 state agencies: DENR,
DoACS, DCR, WRC
- Awards - twice a year



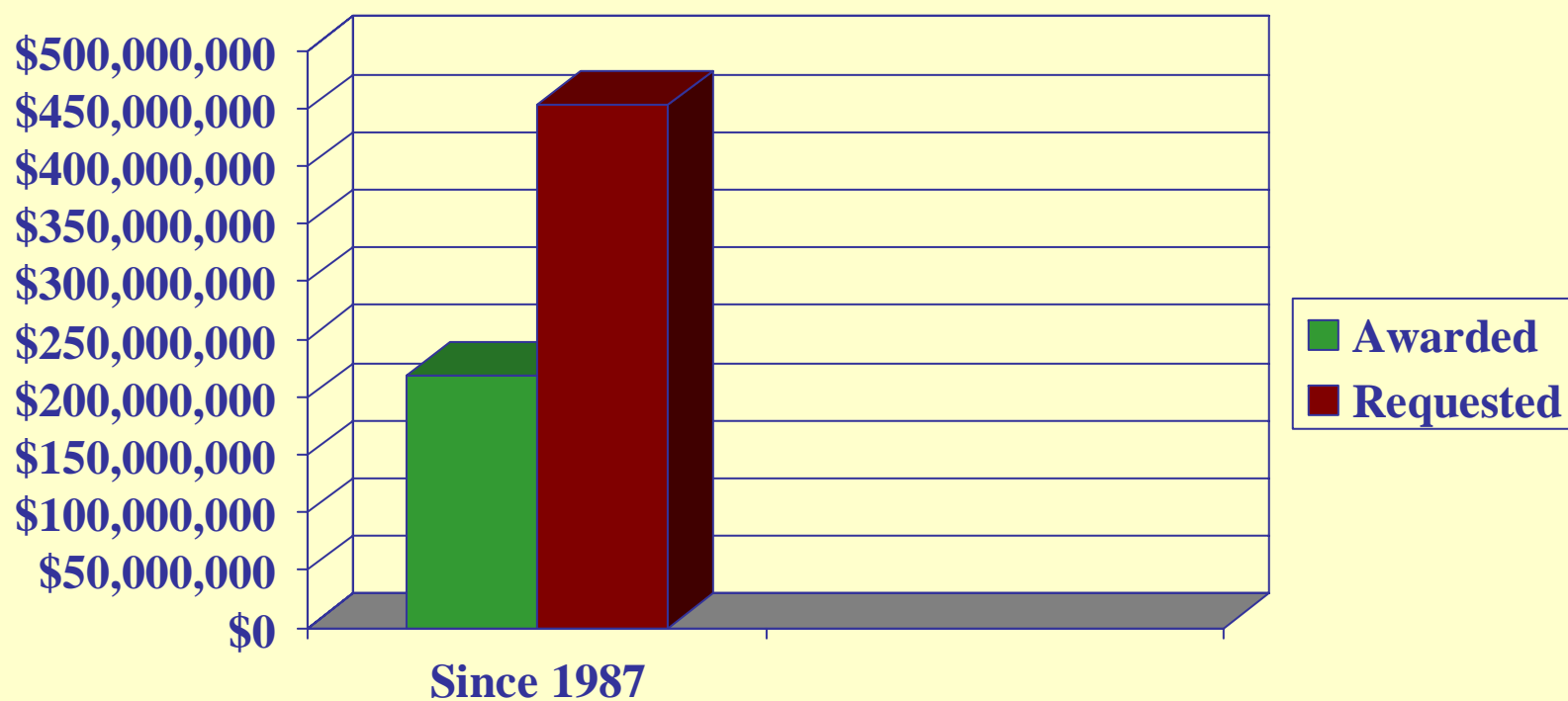
NHTF Income - Calendar Year



NHTF 2007 Income

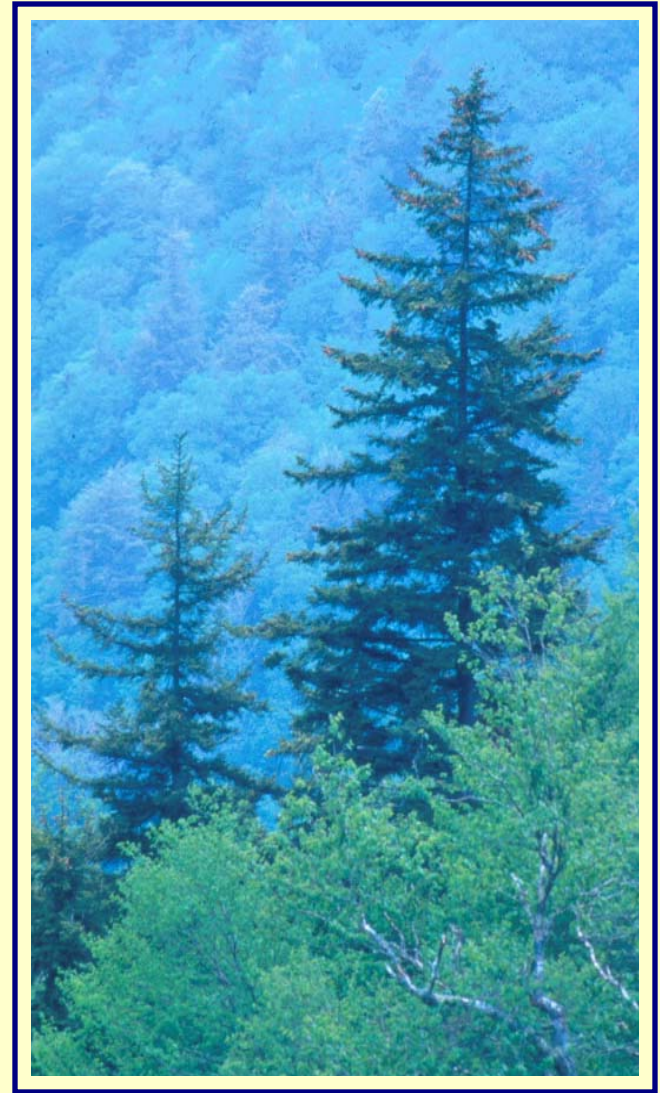
Real Estate Tax	\$17,913,062
License Plate Fee	\$ 4,317,063
<u>Interest</u>	<u>\$ 1,317,692</u>
Total	\$23,547,817

NHTF Funded/Unfunded Comparison 1987-2007

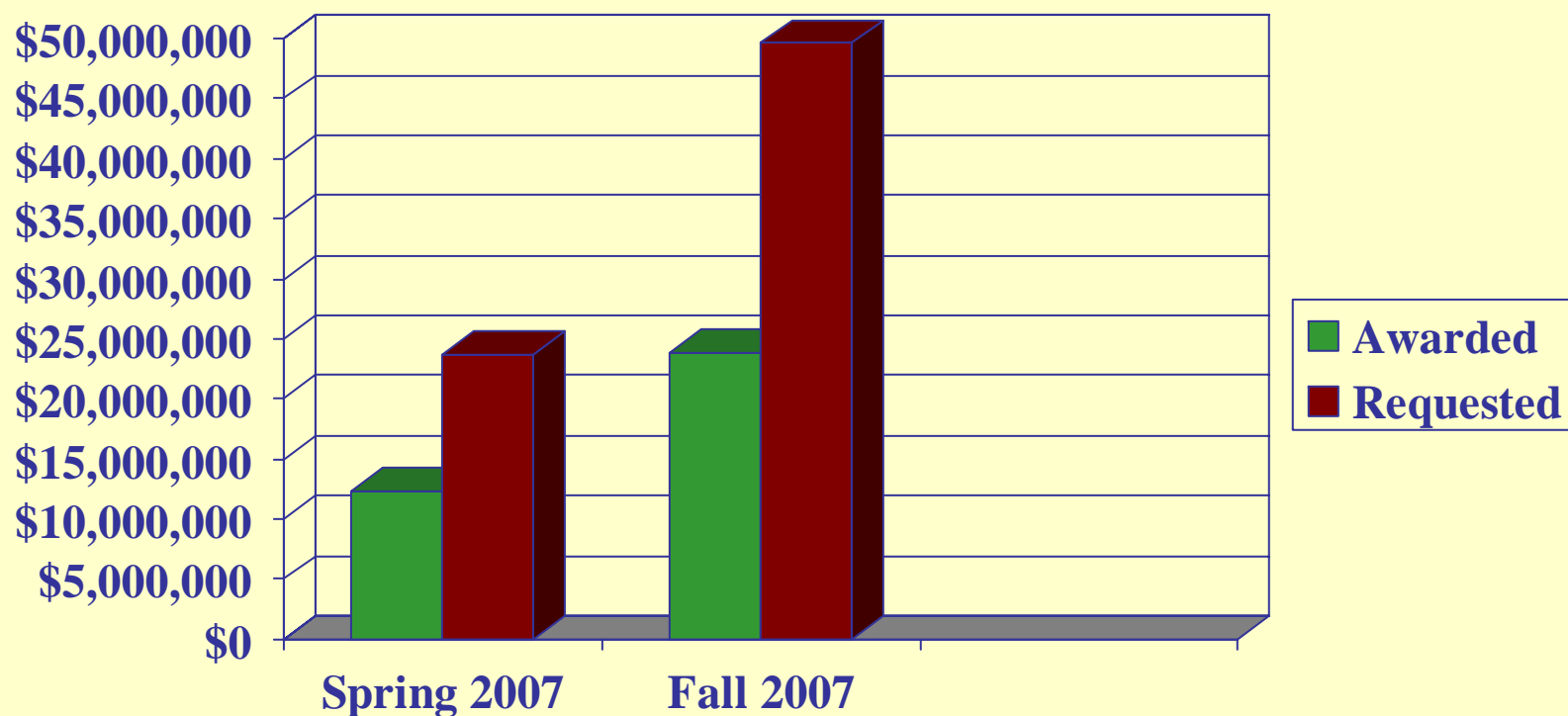


2007 Awards

- 44 Projects
- >20,000 Acres
- \$36,149,061



NHTF Funded/Unfunded Comparison 2007



2007 COPS

- Cedar Cliff, Jackson
- Eastwood, Moore
- Tater Hill, Watauga
- Chimney Rock, Rutherford
- Elk Knob, Ashe, Watauga
- Deep River, Lee Co.
- Pettigrew, Tyrrell
- Juniper Creek IP, Brunswick & Columbus
- Kassab, Onslow
- McCotter-Bordeaux, Onslow
- **TOTAL - \$11million**

WRC – Diggs Property

Progress Energy Divestiture





WRC – Kassab Tract

Military Buffer

- 50% Military Match (\$375,000)
- Provide linking habitat for RCW, Bachman's sparrow; wetlands
- 55 acres adjacent to Stones Creek Game Land and Camp Lejeune training area



WRC – Juniper Creek International Paper

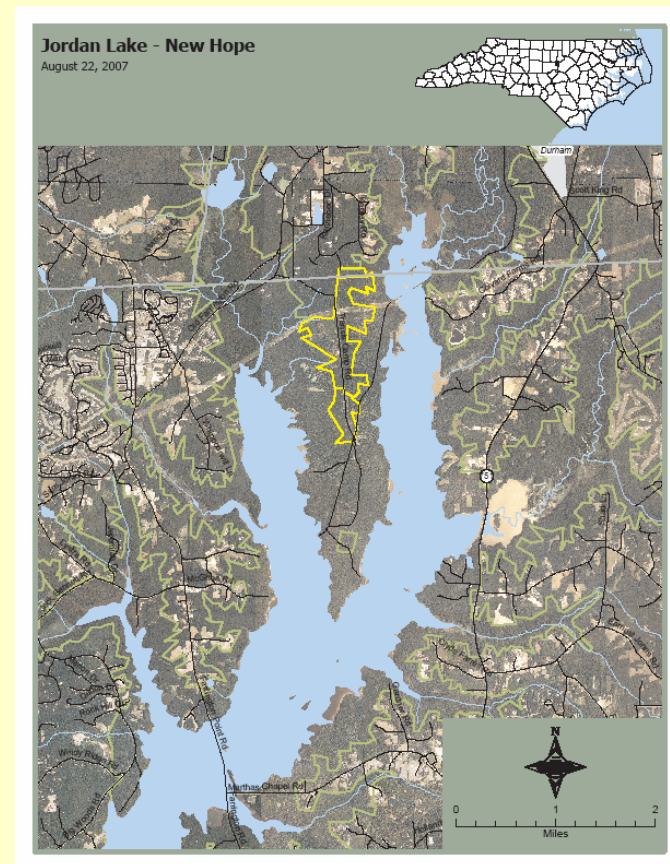
- Nationally Significant Aquatic Habitat
- \$6,555,883 (plus previous grant of almost \$1 million)
- 7,236 acres
- CWMTF





WRC – New Hope Valley Forest

- Chatham & Durham Counties
- Bald Eagle Nesting Habitat
- Easily accessible to urban population
- Protect water resource



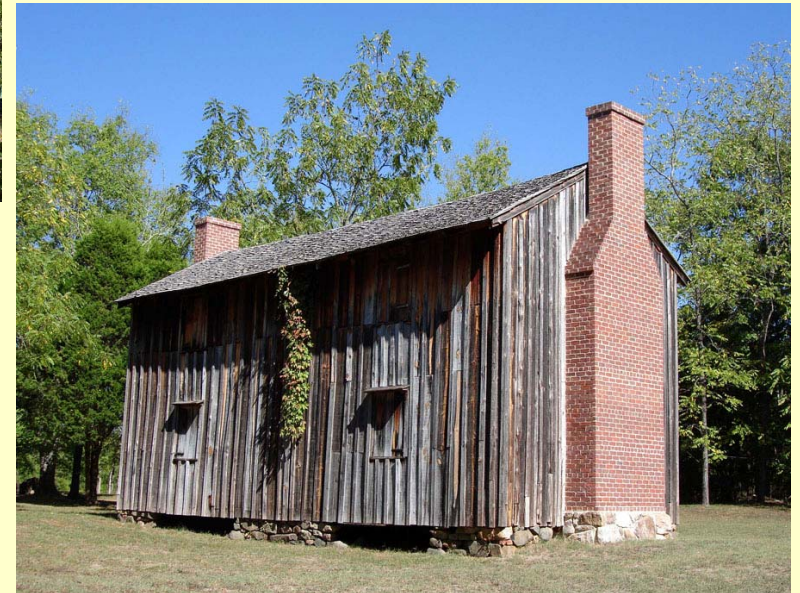
Stagville State Historic Site Land Acquisition

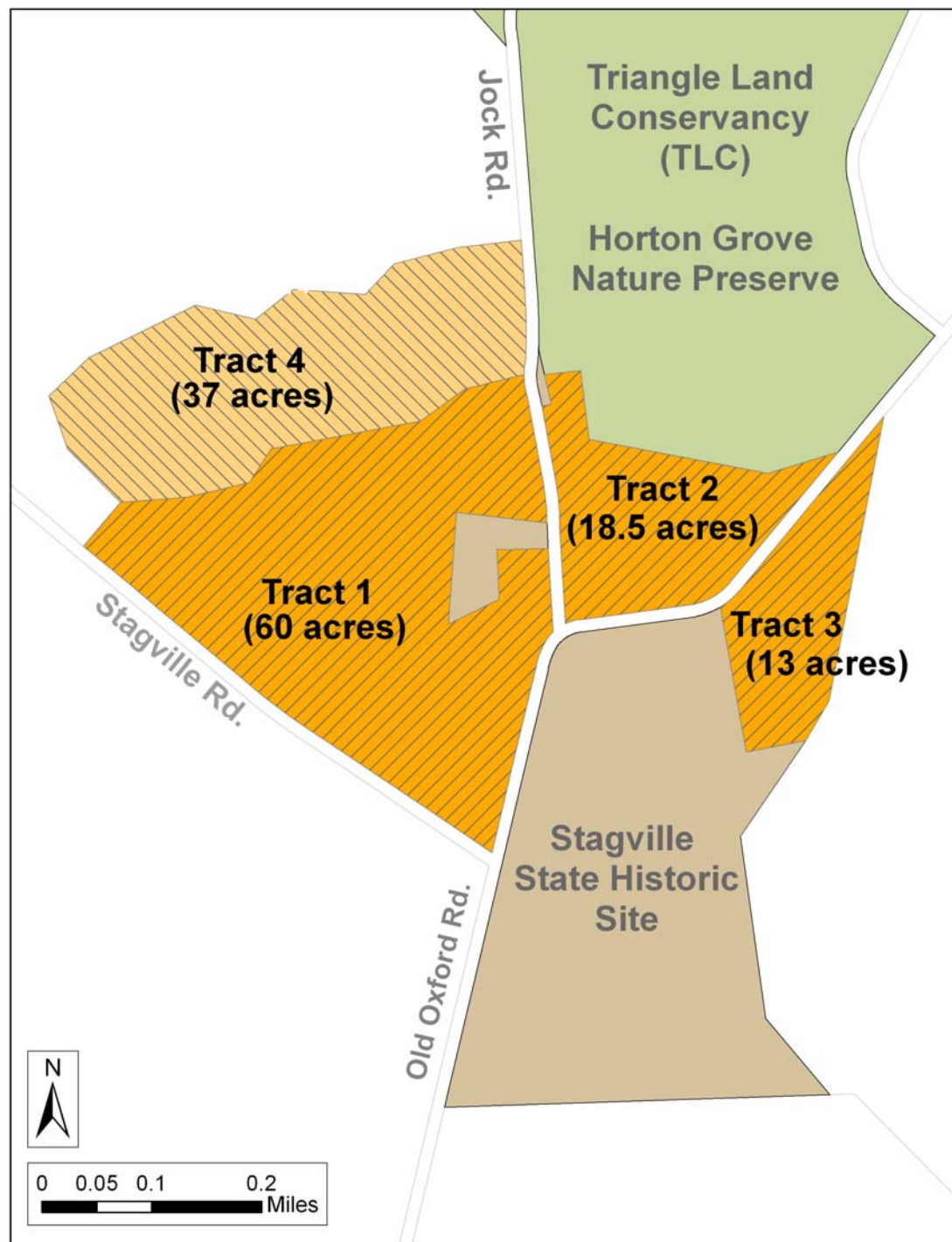
Durham County



Bennehan House

Slave House at Horton Grove





DCR – Archeological Site Contentnea

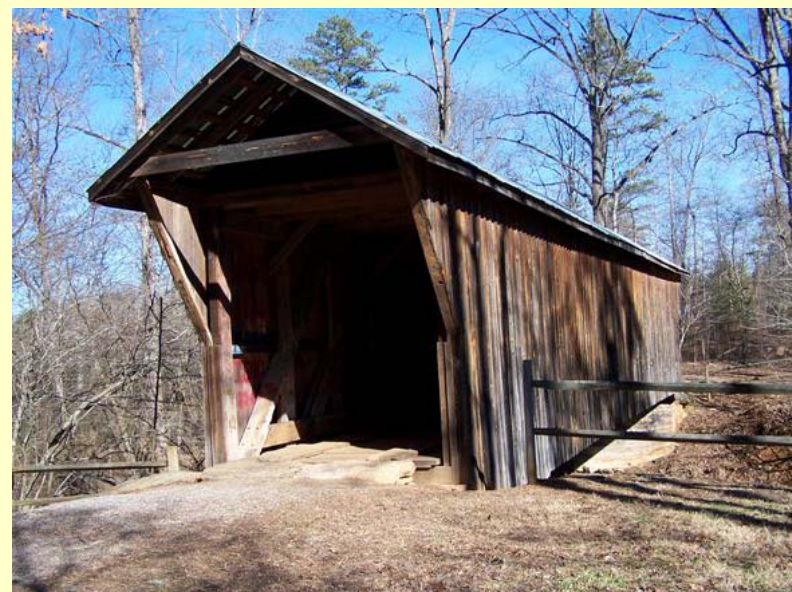


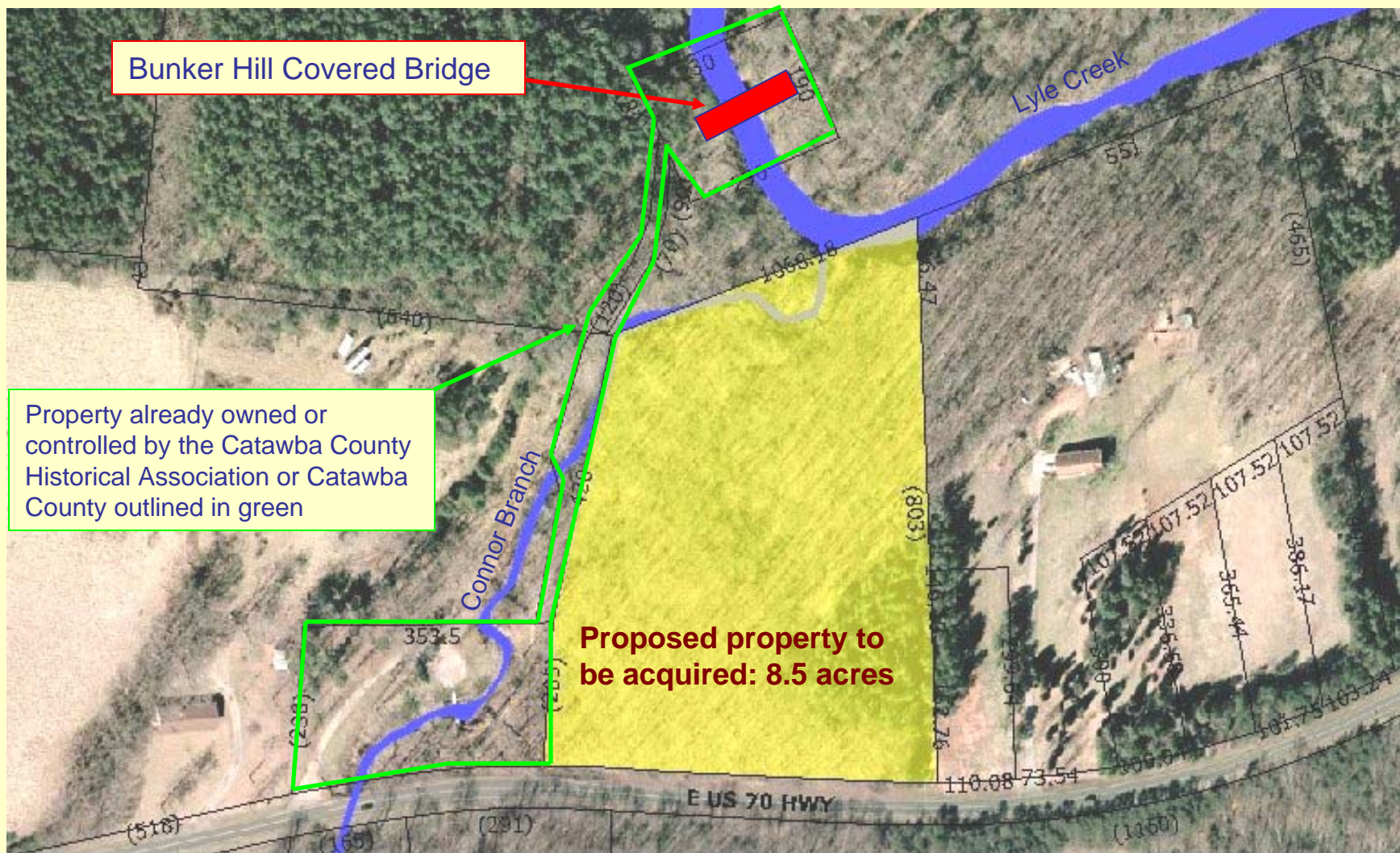






**Dept. of Cultural Resources
Bunker Hill Covered Bridge
Claremont, Catawba County**





DCR – Valle Crucis

Mast General Store



Ag's Plant Conservation Program

Eastwood Plant Preserve



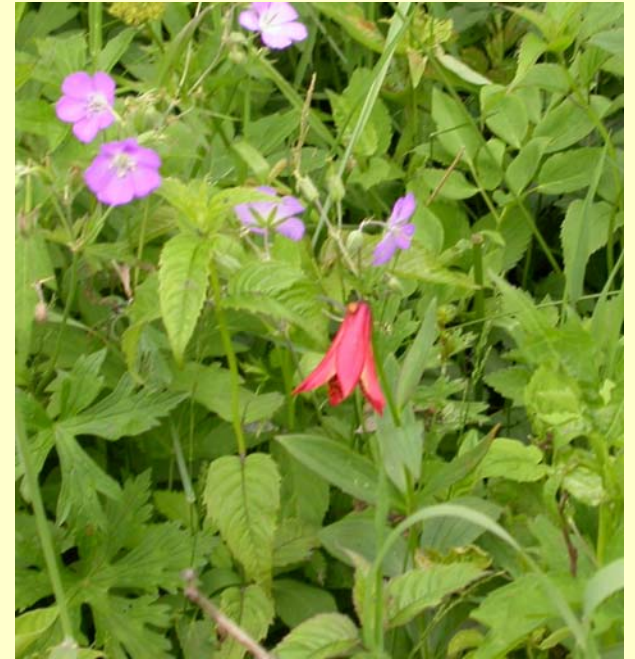
- First Preserve in Moore County
- Additional 127 acres
- High quality, scenic longleaf pine forests
- Rare, threatened and endangered species

Sandhills Lily





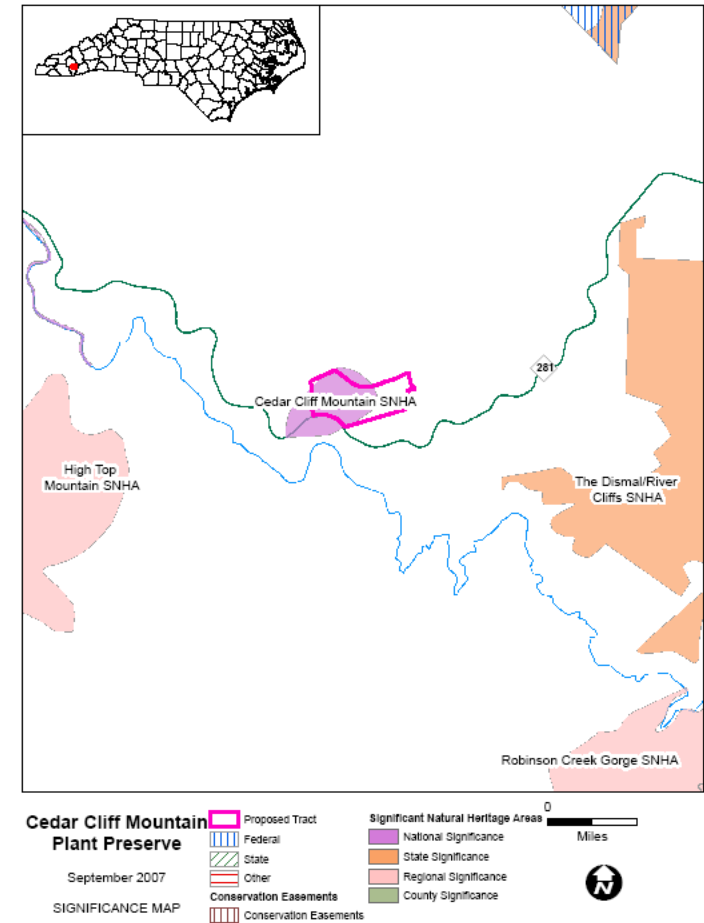
Tater Hill Plant Conservation Preserve



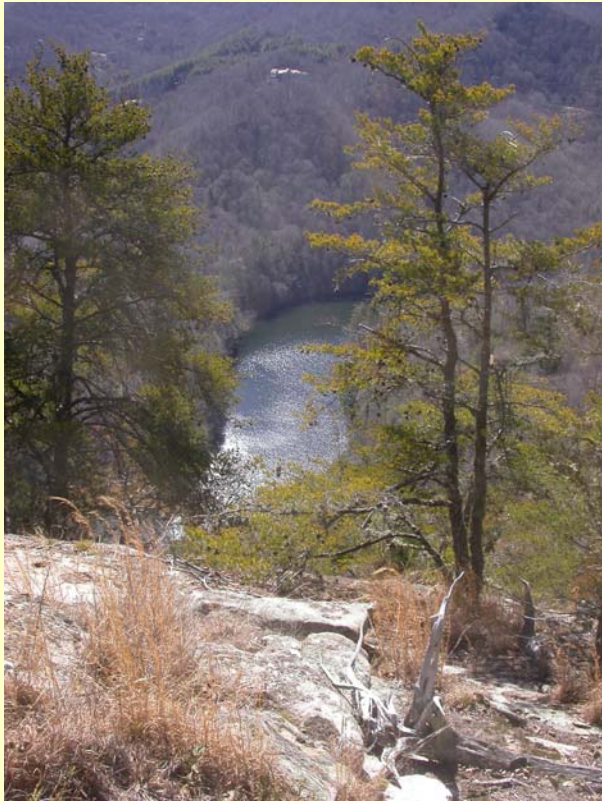


- Jackson County
- Over 180 non-vascular plants

Cedar Cliff

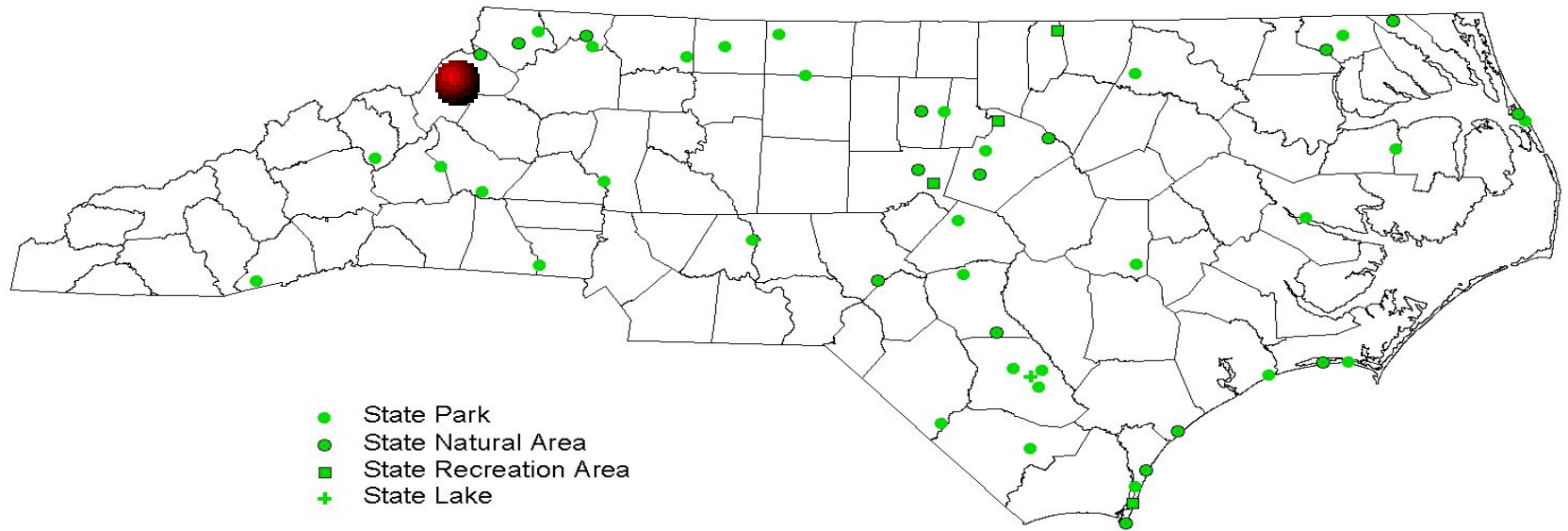


Cedar Cliff

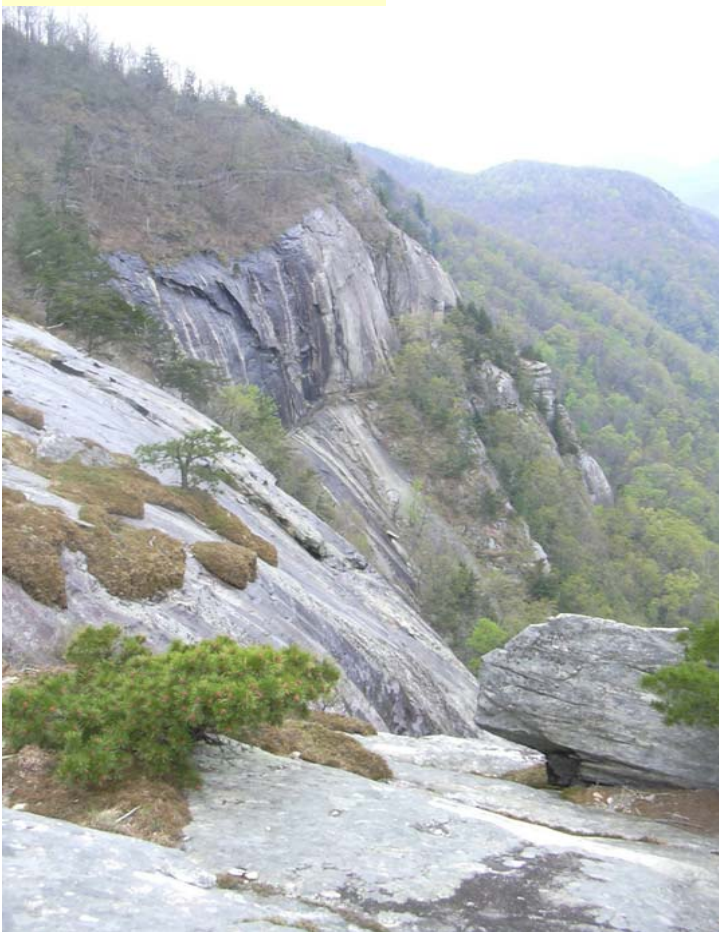
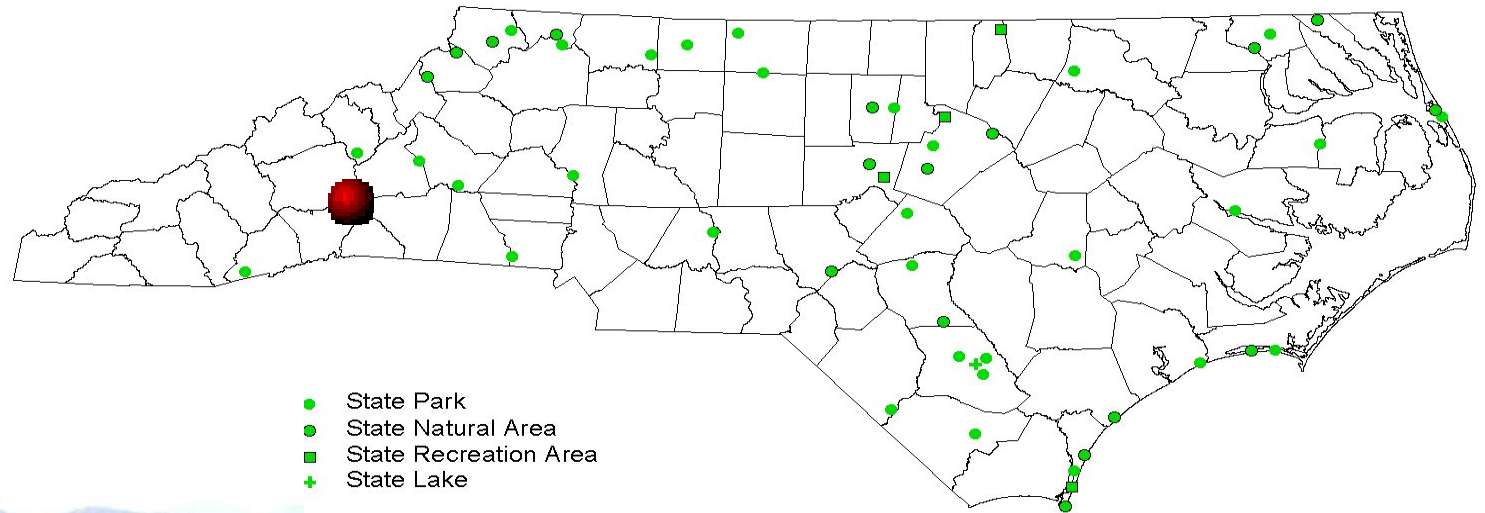


© Michael Luth

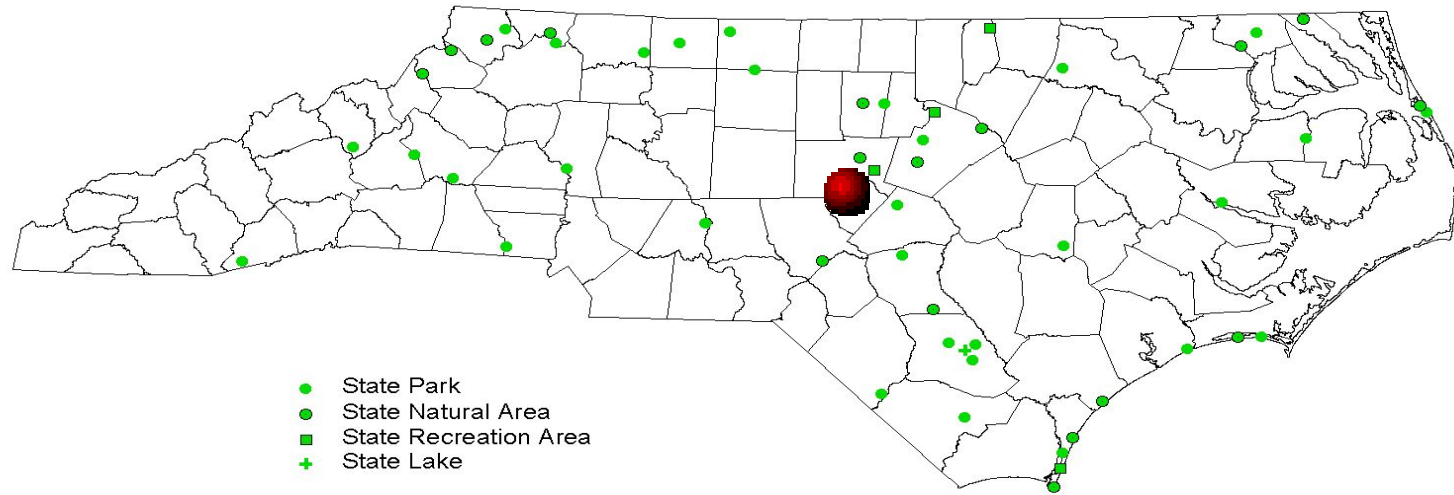
ELK KNOB STATE PARK



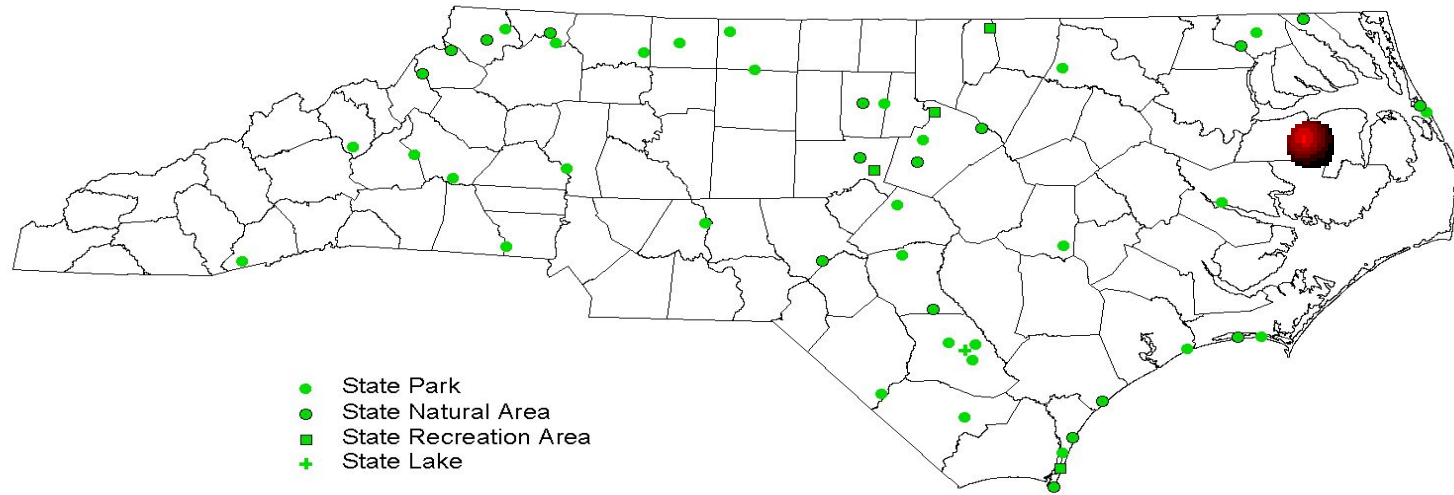
Chimney Rock State Park



DEEP RIVER STATE TRAIL

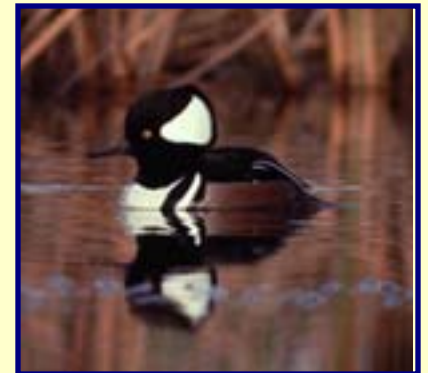


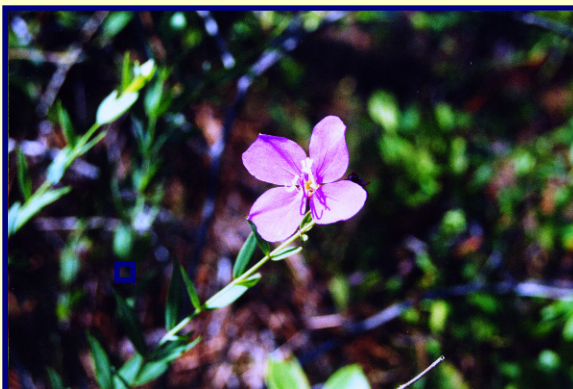
PETTIGREW STATE PARK



Partnerships

- Project coordination with Clean Water Management Trust Fund, and Park & Recreation Trust Fund
- Frequent coordination with applicant agencies, private donors and conservation groups
- Most projects have matching funds or landowner gifts
- Leverage Federal Funds



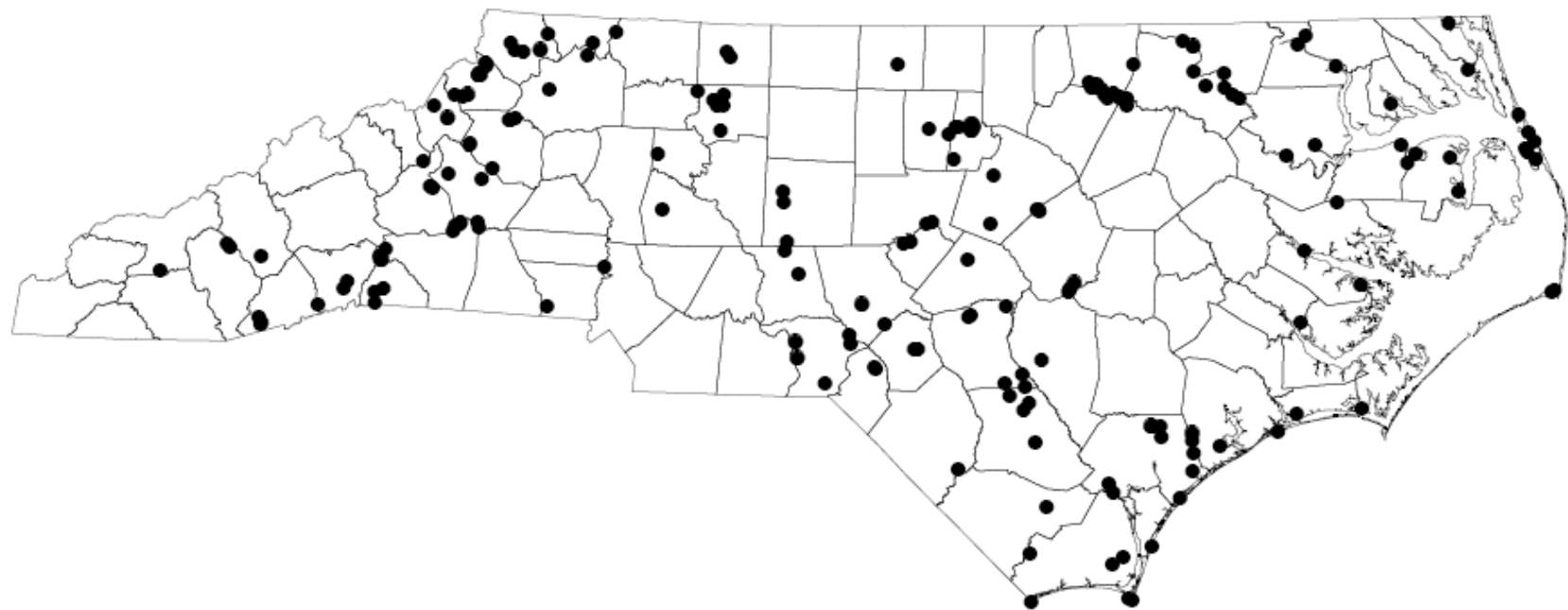


Additional Information

Lisa.riegel@ncmail.net

(919) 715-8014

Natural Heritage Trust Fund
Project Locations
1988-2006



NHTF 2006 Income

Real Estate Tax	\$18,981,304
License Plate Fee	\$ 4,166,738
<u>Interest</u>	<u>\$ 970,907</u>
Total	\$24,118,949