

Environmental Review Commission

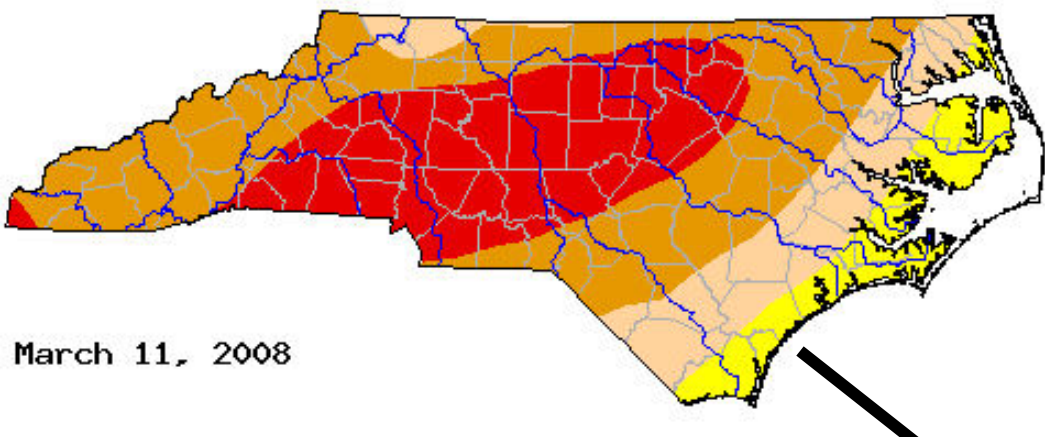
Drought Update and Water-Use Data

Division of Water Resources
May 9, 2008

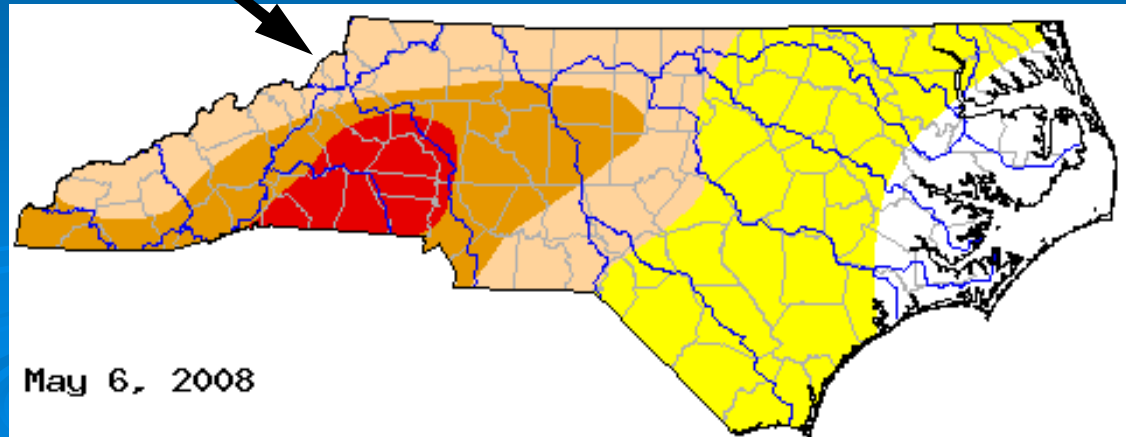


Current Conditions Drought Monitor

Last Month's Map



This Week's Map



Unofficial Rainfall Estimates

30-Day Precip for North Carolina Apr 7, 2008 through May 6, 2008

	Total Rainfall	Departure from Normal	Pct of Normal	Rank	Driest on Record
North Carolina Statewide	2.85	-0.76	79%	24th driest	2.12" (2002)

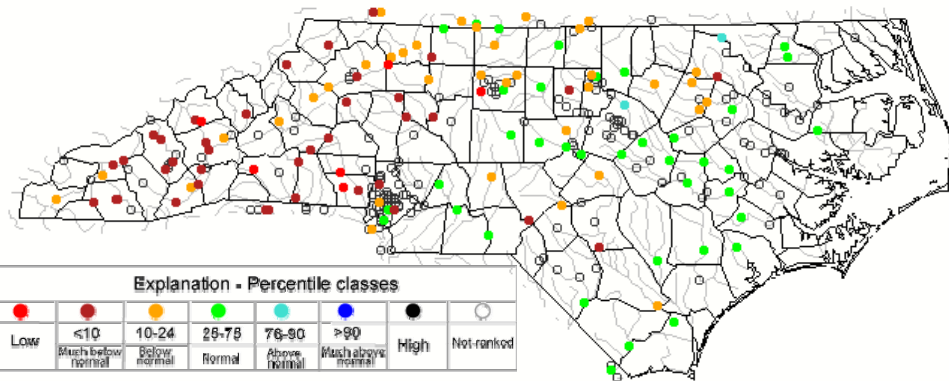
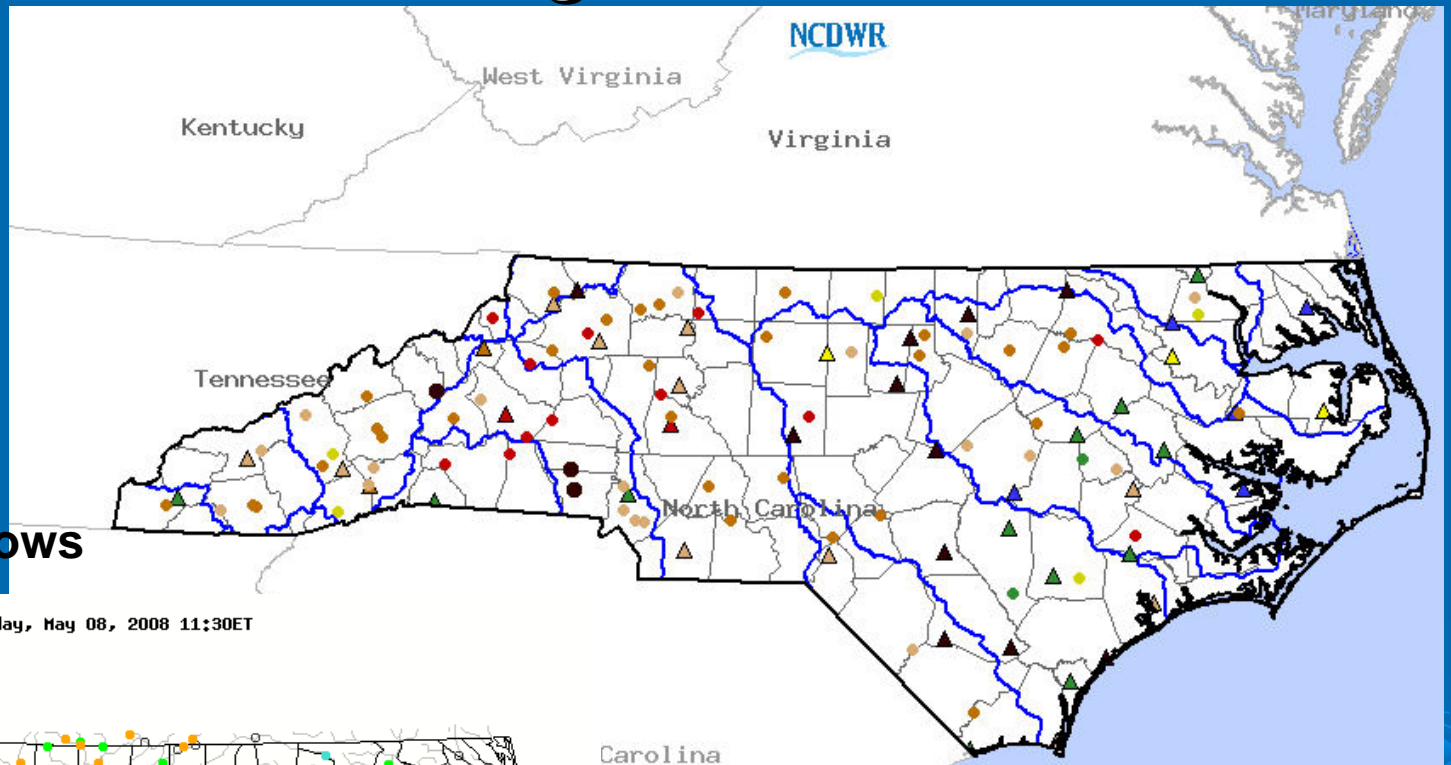
365-Day Precip for North Carolina May 8, 2007 through May 6,, 2008

	Total Rainfall	Departure from Normal	Pct of Normal	Rank	Driest on Record
North Carolina Statewide	37.23"	-13.08	74%	2nd driest	36.47" (80-81)

Current Ground Water Levels 6-Month Average Streamflows

Current Streamflows

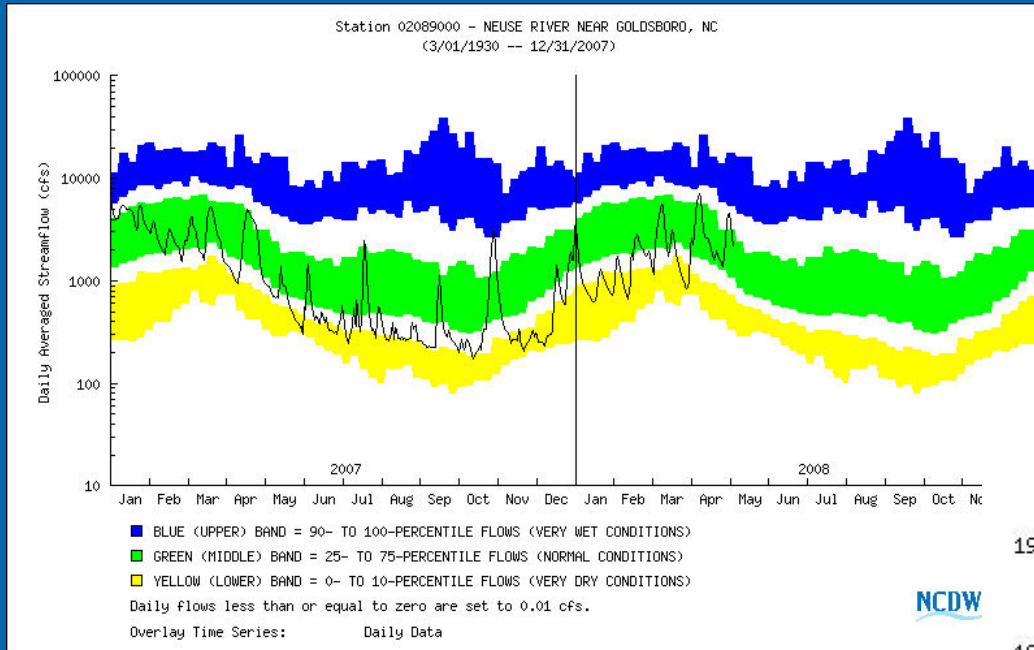
Thursday, May 08, 2008 11:30ET



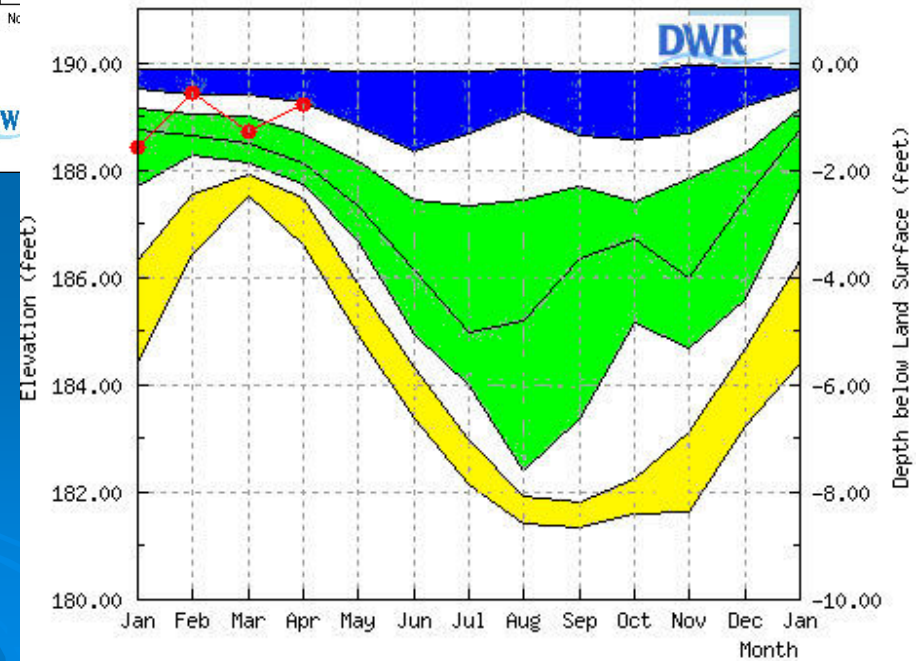
Explanation - Percentile classes						
● Low	● ≤10	● 10-24	● 25-75	● 76-90	● >90	● High
○ Not-ranked	○ Much below normal	○ Below normal	○ Normal	○ Above normal	○ Much above normal	○ Not-ranked

- Met (Unregulated 7-day flows percentile > 70)
- Normal (Unregulated 7-day flows percentile 30-70)
- D0 - Abnormally Dry (Unregulated 7-day flows percentile 20-30)
- D1 - Moderate (Unregulated 7-day flows percentile 10-20)
- D2 - Severe (Unregulated 7-day flows percentile 5-10)
- D3 - Extreme (Unregulated 7-day flows percentile 2-5)
- D4 - Exceptional (Unregulated 7-day flows percentile 0-2)
- N/R
- ▲ Met (drought well percentile > 70)
- ▲ Normal (drought well percentile 30-70)
- ▲ D0 - Abnormally Dry (drought well percentile 20-30)
- ▲ D1 - Moderate (drought well percentile 10-20)
- ▲ D2 - Severe (drought well percentile 5-10)
- ▲ D3 - Extreme (drought well percentile 2-5)
- ▲ D4 - Exceptional (drought well percentile 0-2)
- △ N/R
- ∖ State Boundary of NC
- ∖ Basins
- ∖ State Boundaries
- ∖ Counties in Basins

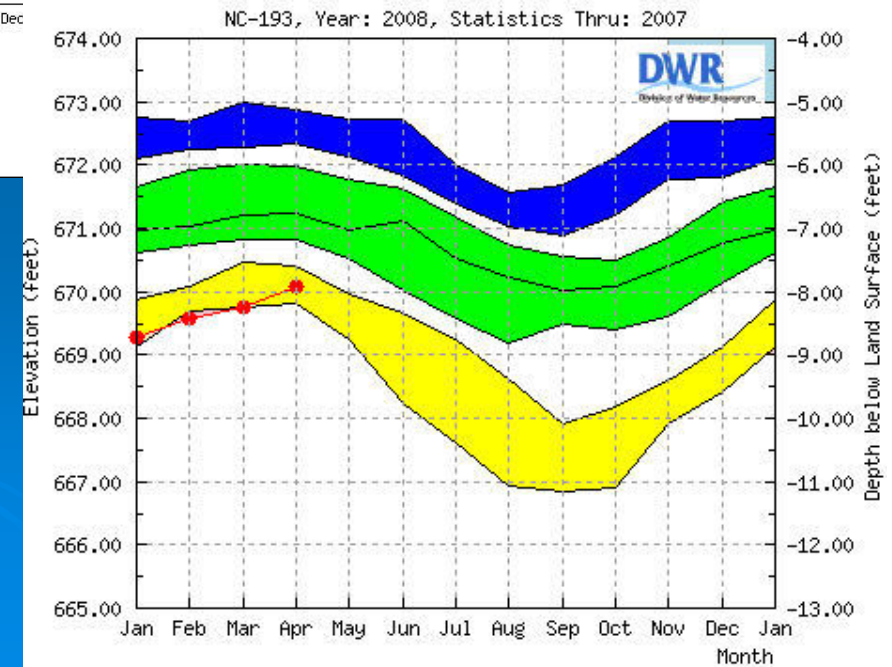
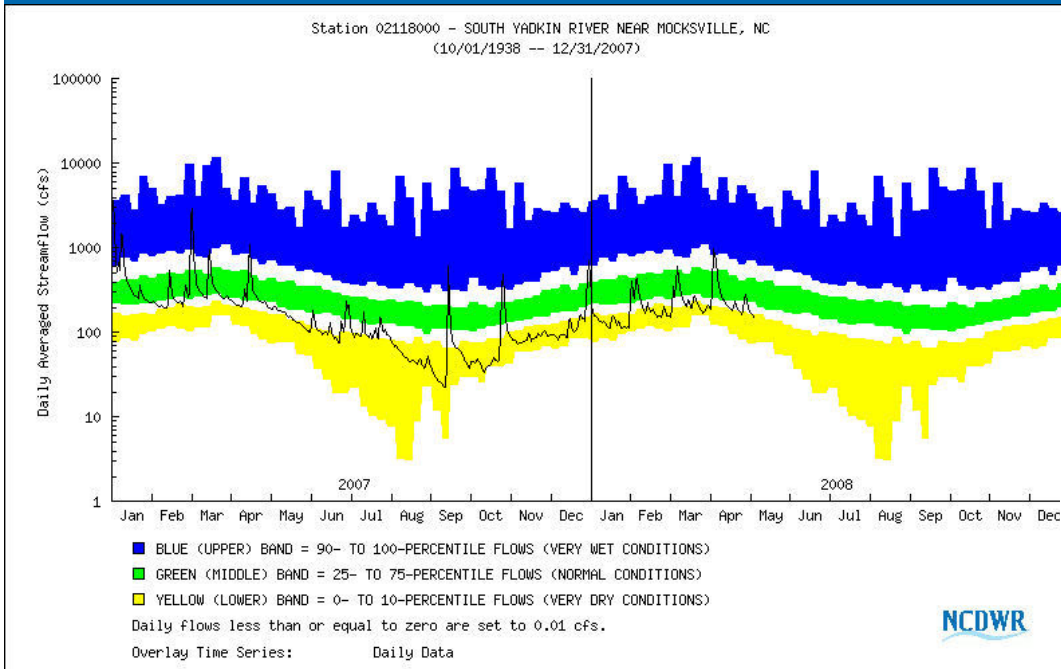
Wayne County



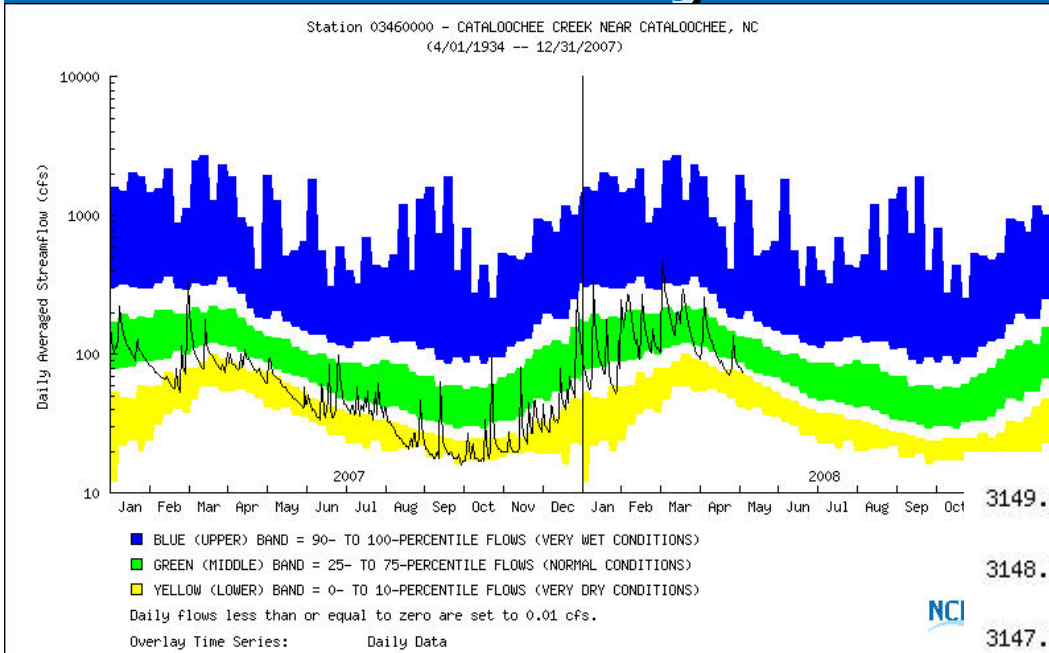
NC-148, Year: 2008, Statistics Thru: 2007



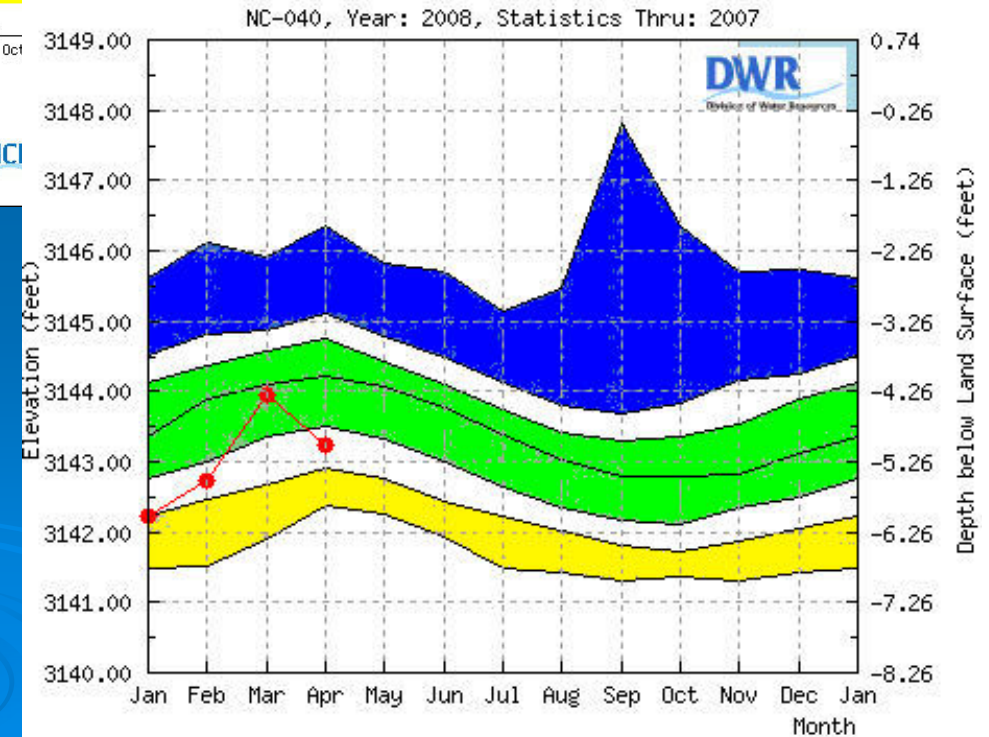
Rowan County



Haywood County



NCI

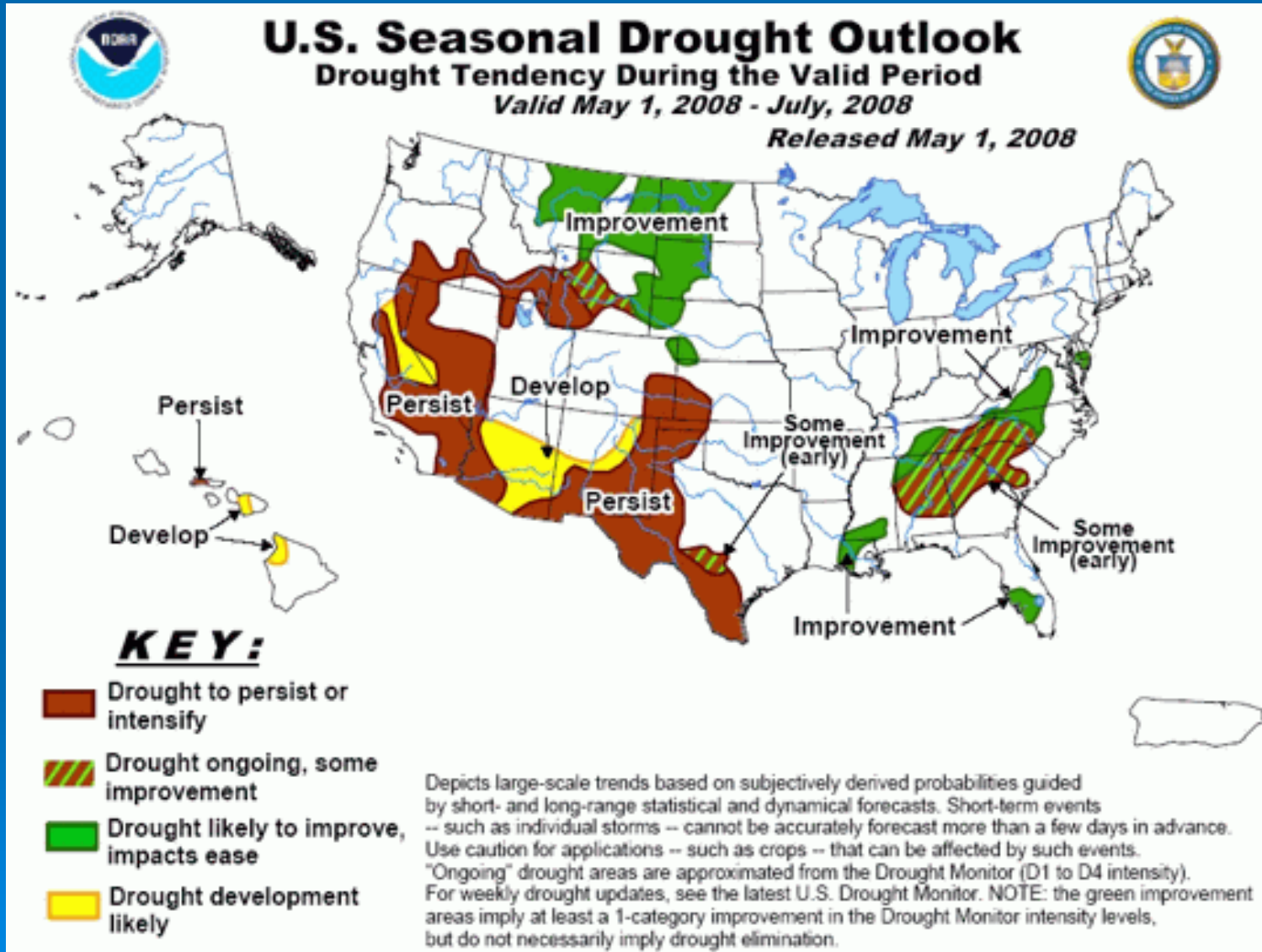


Current Conditions Public Water Supply Systems

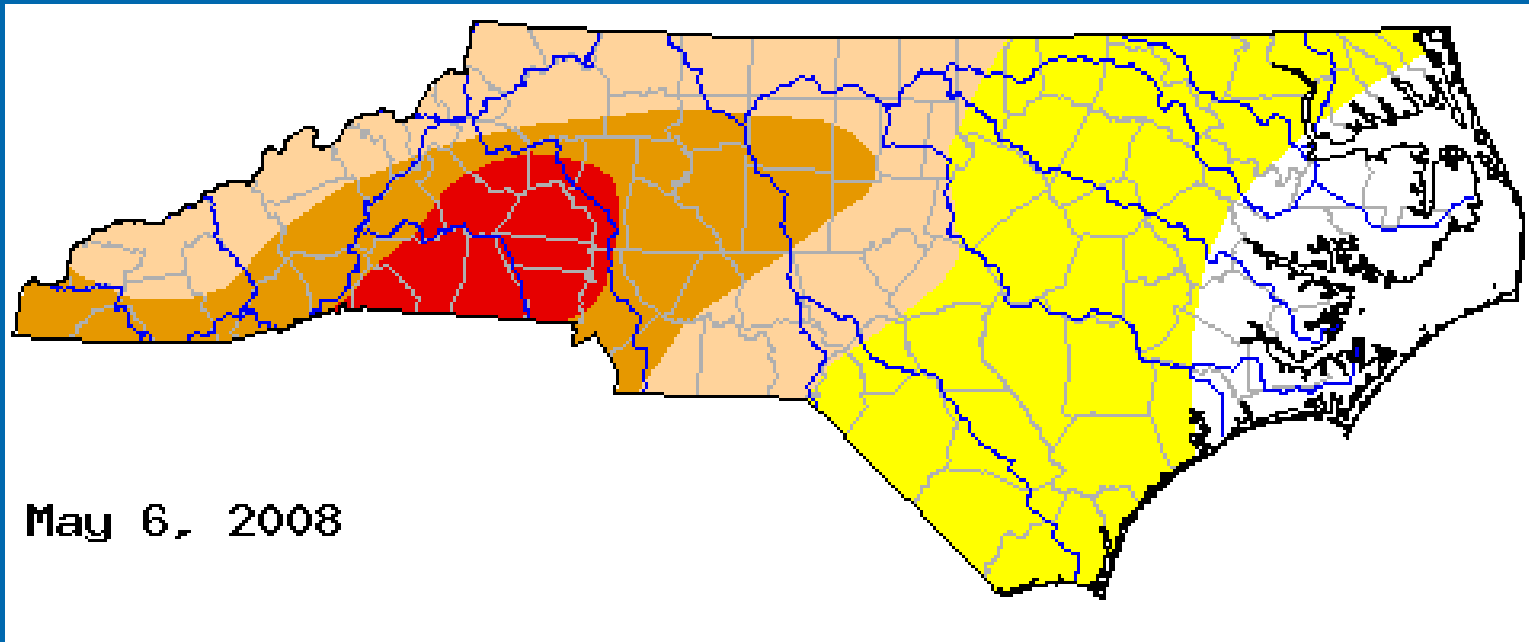
Water Conservation level summary data

Status	Systems		Population	
	Number	Percent	Number	Percent
Not Restricted	284	45.22	1,654,968	24.41
Voluntary Conservation	178	28.34	1,760,223	25.96
Mandatory Conservation	166	26.43	3,365,981	49.64
Emergency	0	0.00	0	0.00
Total	628		6,781,172	

Forecast



Questions



- **NC Drought Management Advisory Council -**
<http://www.ncdrought.org/>
- **Water Sources Task Force -**
http://www.ncwater.org/Drought_Monitoring/wstaskforce.php
- **Weekly Water -**
http://www.ncwater.org/Drought_Monitoring/reduction/weeklyreport.php