



Annual Update for Environmental Review Commission

Lisa Riegel

Executive Director

(919) 715-8014

April 15, 2010

MISSION

protect natural & cultural heritage lands

- Recreation, scientific, education, cultural and aesthetic purposes
- Additions to state parks, trails, forests, wildlife areas
- Historic properties program
- Other beneficial use and enjoyment by the public

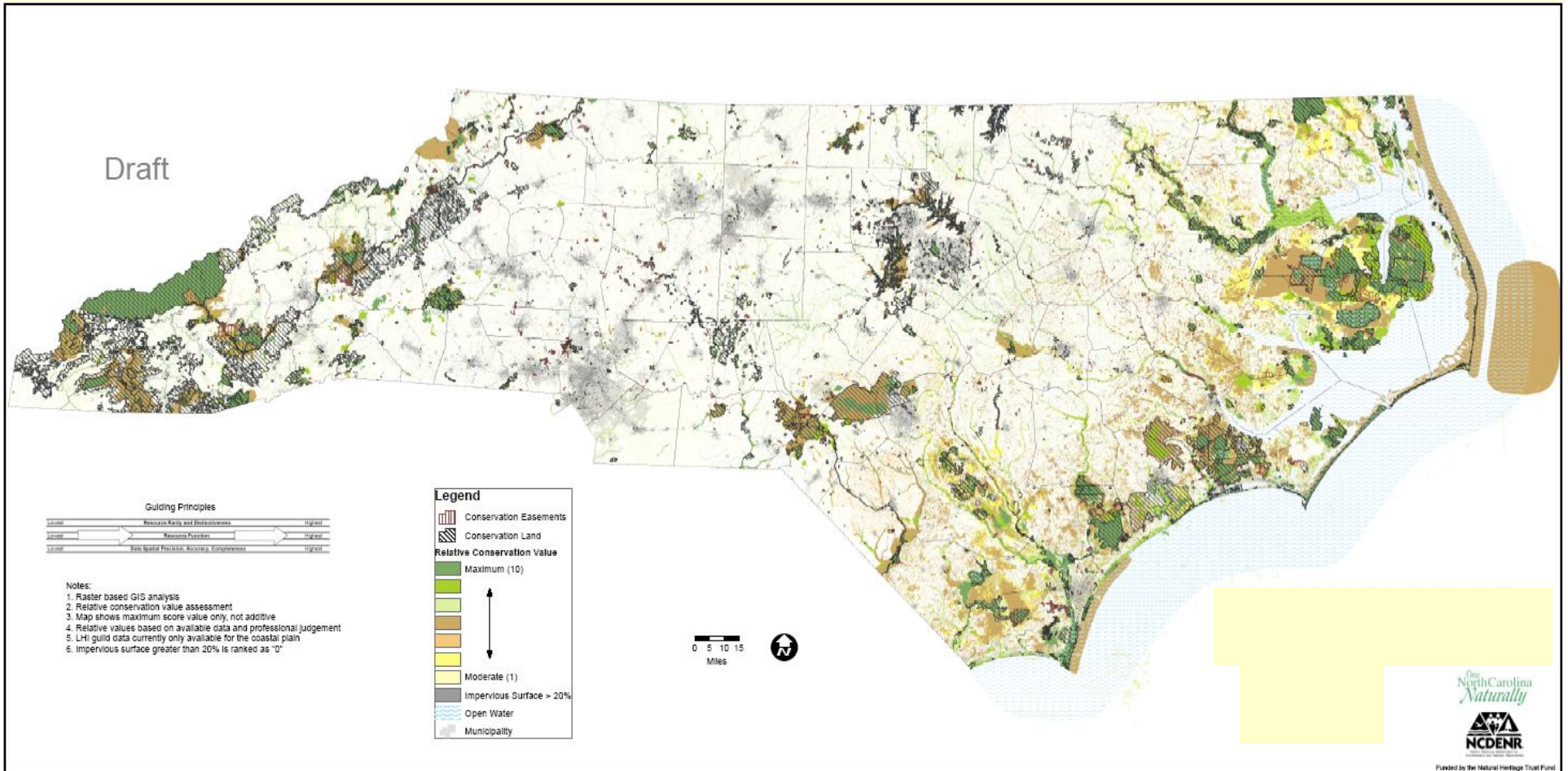


Natural Heritage Program

- ID most important natural areas in state
- 83 of 100 Counties complete; 6 ongoing
- Statewide Conservation Planning Tool (Map)



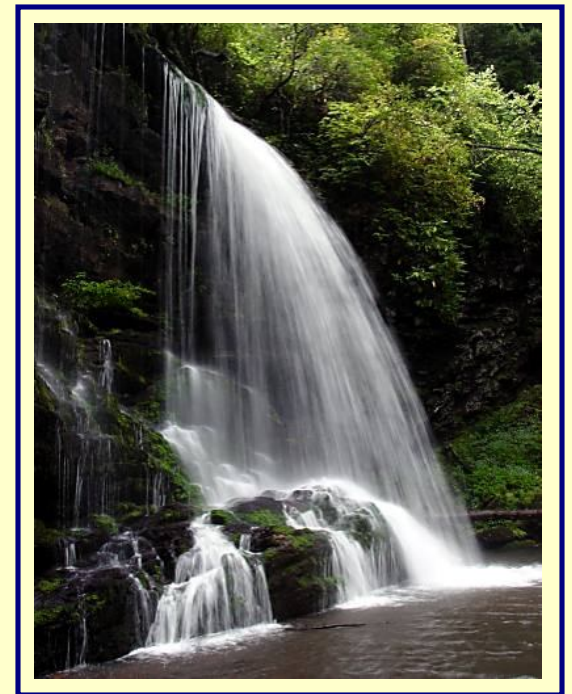
One NC *Naturally* Conservation Planning Tool



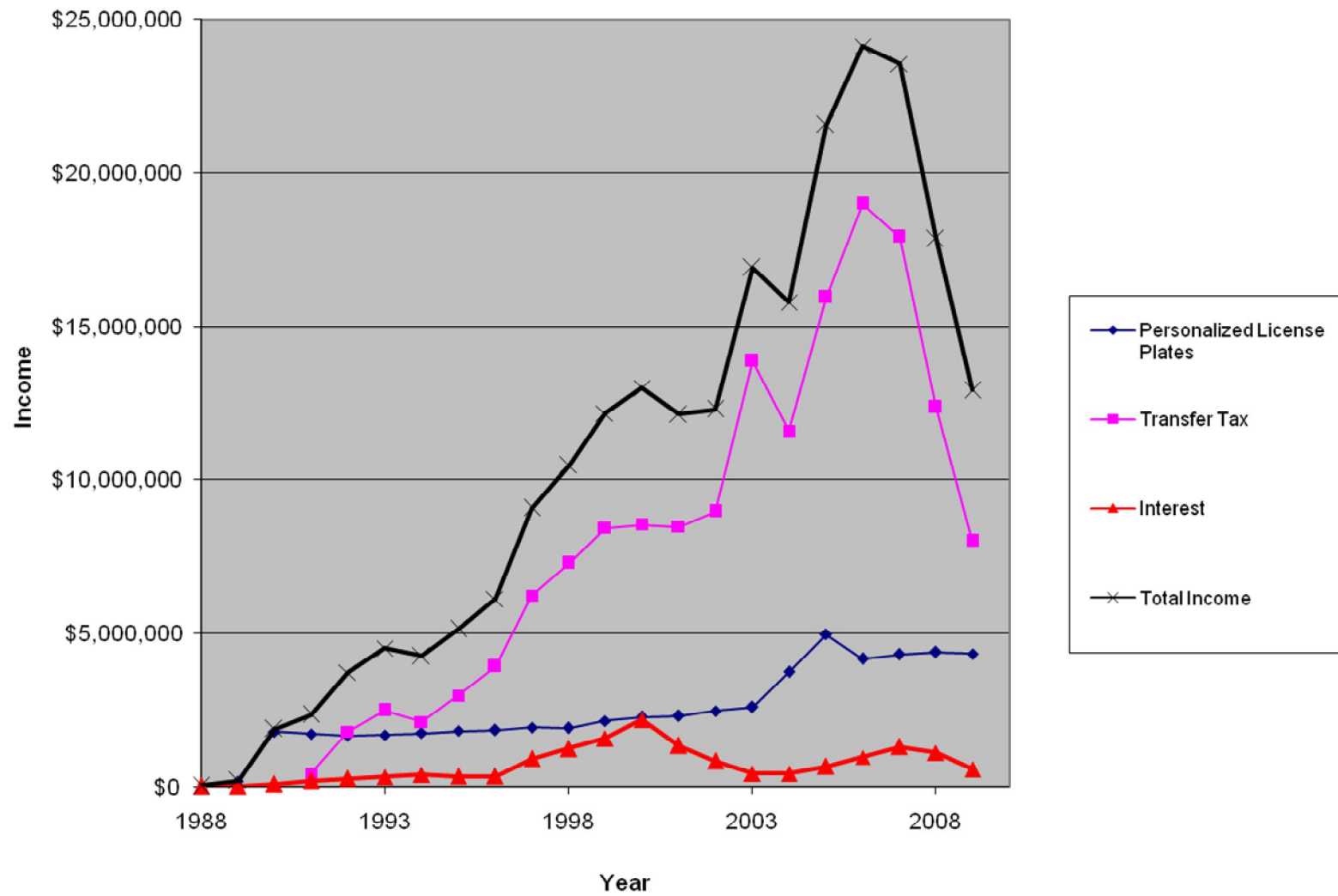
Biodiversity / Wildlife Habitat Assessment

Program Overview

- Established 1987
- 12 member citizen board
- Accepts applications from
4 state agencies: DENR,
DoACS, DCR, WRC
- Awards - twice a year



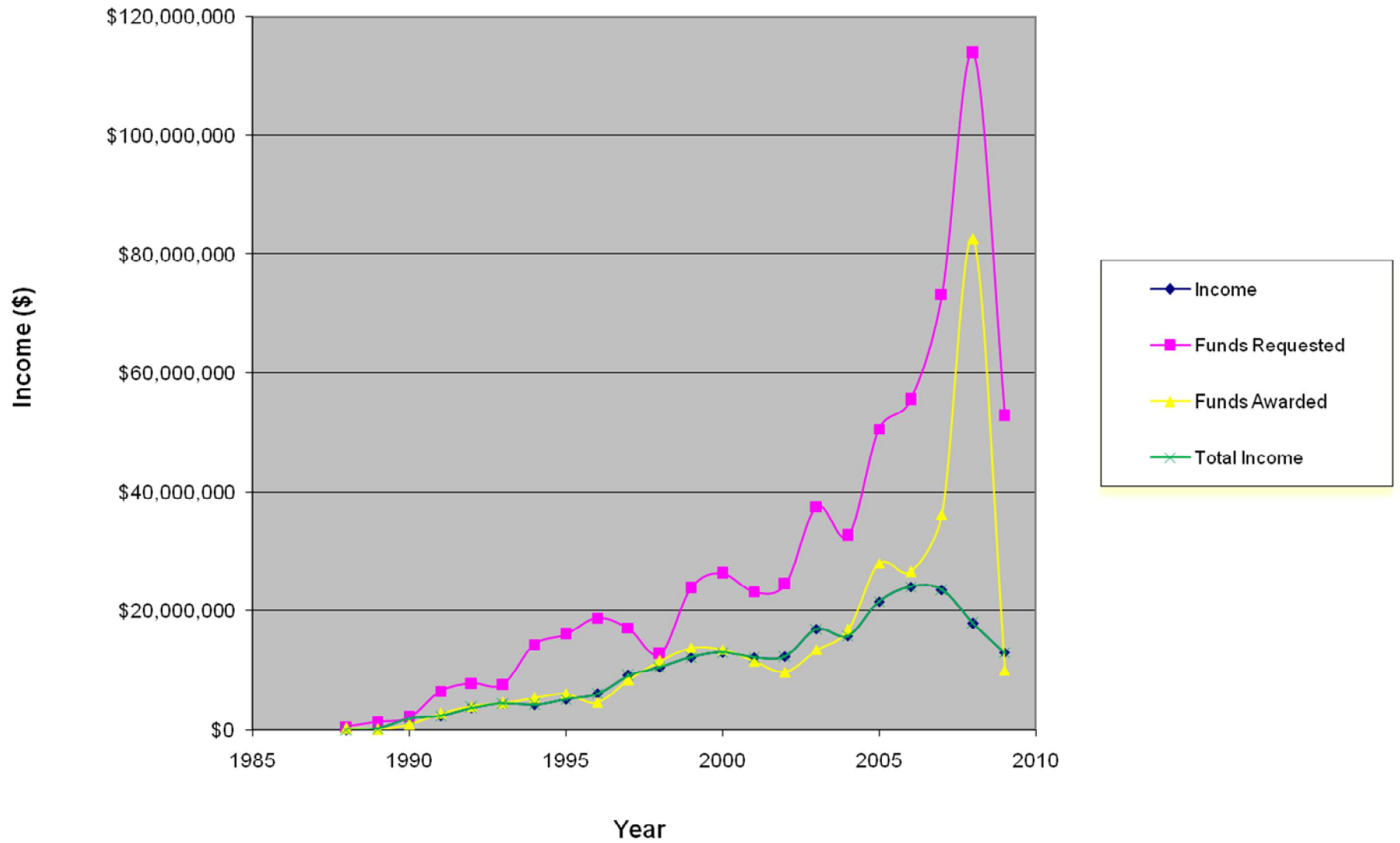
NHP Income – 2009 Calendar Year



NHTF 2009 Income

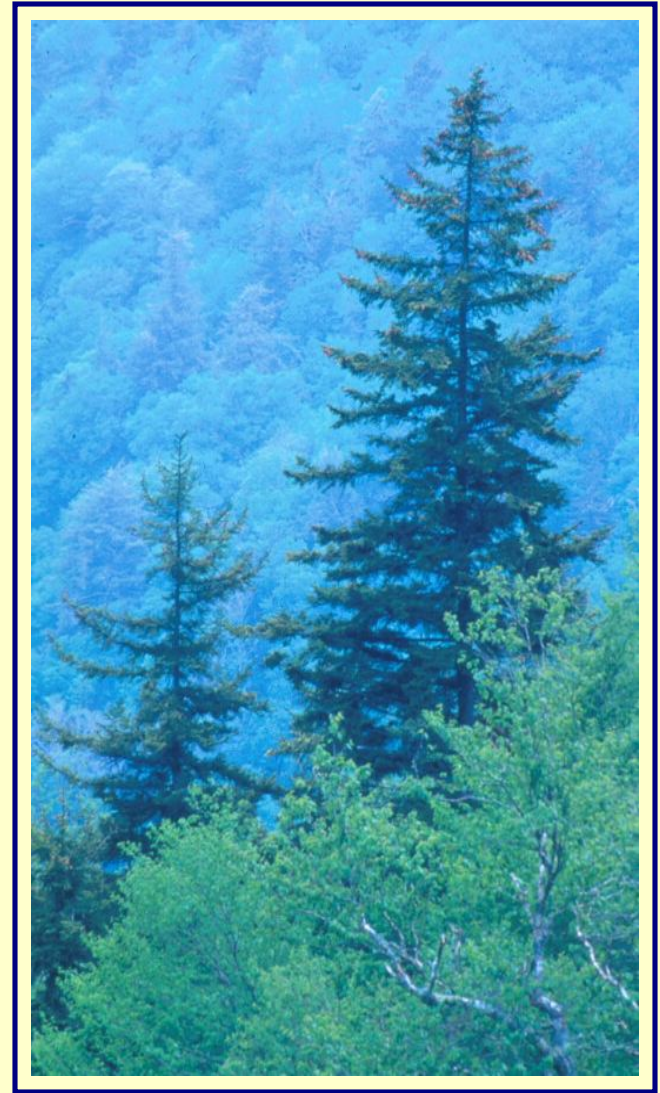
Real Estate Tax	\$ 7,999,210
License Plate Fee	\$ 4,335,924
<u>Interest</u>	<u>\$ 577,782</u>
Total	\$12,912,917

1987-2009
Grants Awarded vs Income & Requests



2009 Awards

- 18 Projects
- >4,000 Acres
- \$10,000,000
- \$2.8 million
budget transfer





Slow Down, Not Stop

- Dramatic Decrease in Available Funds
- Need for Partnering and Prioritizing

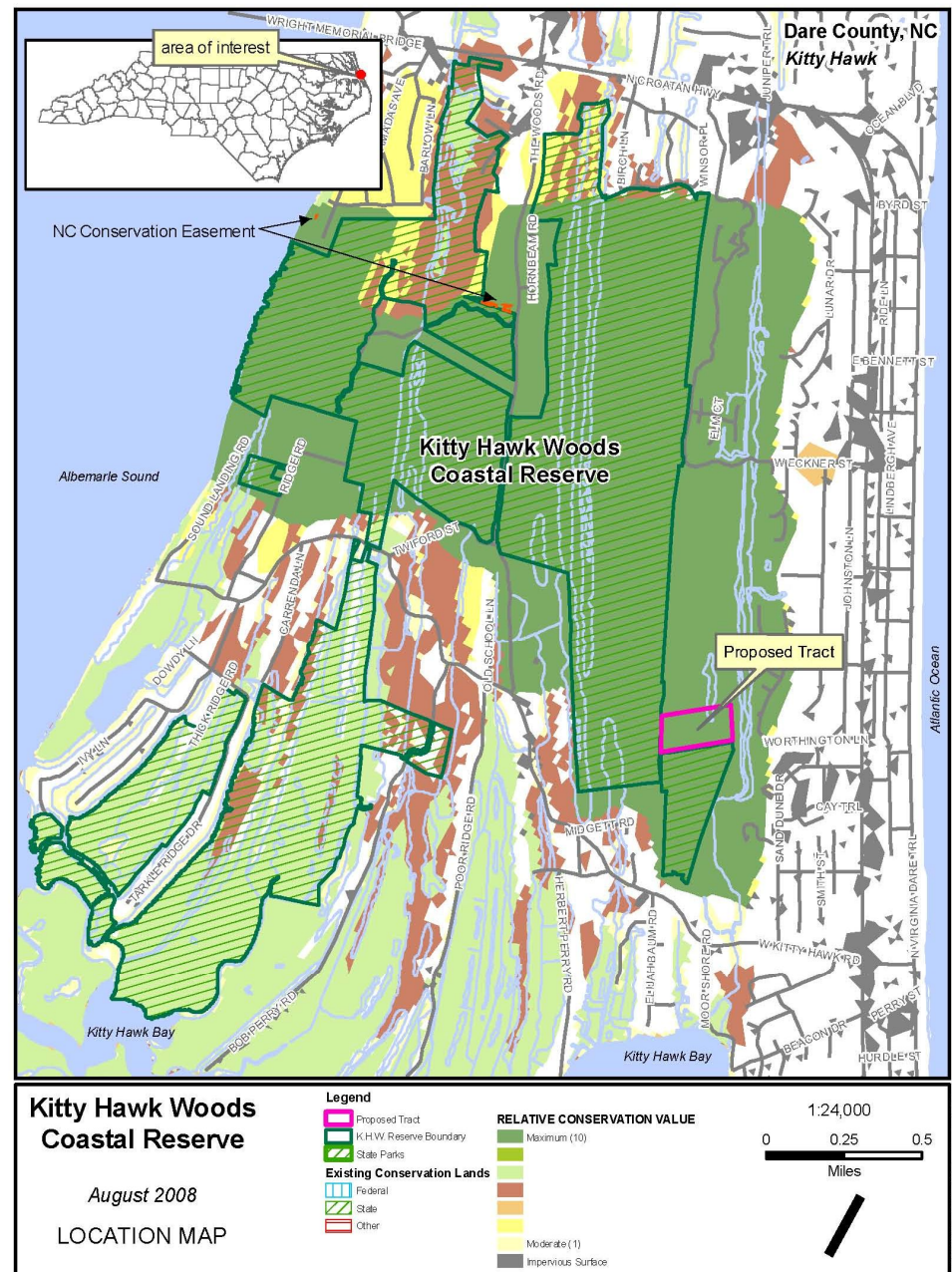
2009 Projects – Highlights

- WRC
 - South Mts inholding
 - Pond Mt Additional
 - Sandhills Linking tract
 - Uwharrie Mts
 - Ducote Bog
- DCR
 - Bethania
 - Rose Creek/OMVT
- PCP
 - Tater Hill
 - Eastwood
 - Boiling Spring Lakes
- DENR
 - Kitty Hawk
 - Carver's Creek
 - Zoo /Batchelor's Creek
 - Gorges

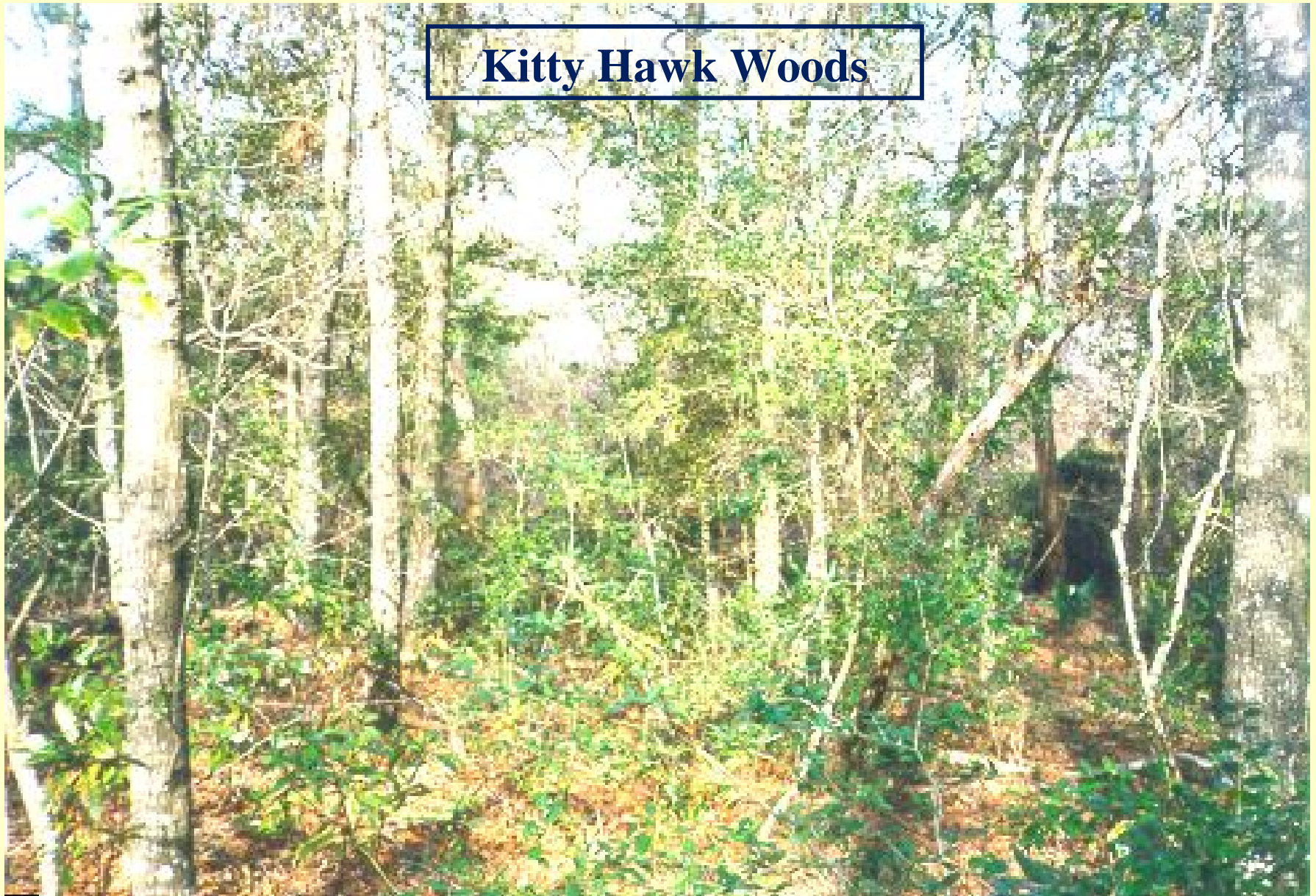
- Listed in several state and federal conservation plans as a priority

- Thus, federal grant at 100% match of the \$167,500 in NHTF funding

- 16 acres added of Nationally Significant Natural Area Maritime forest – both deciduous forest and swamp forest.



Kitty Hawk Woods





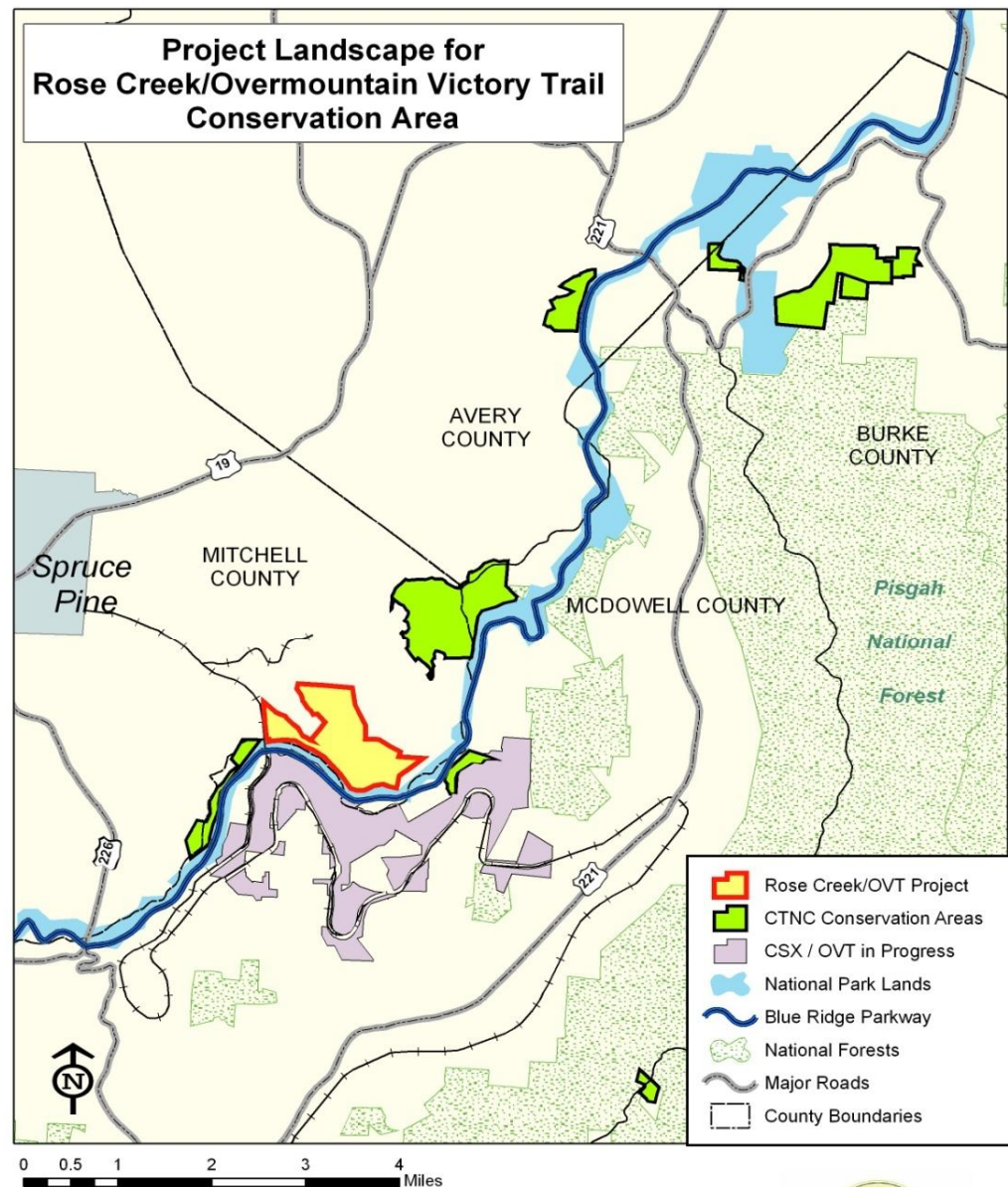


CSX – Overmountain National Historic Victory Trail



Rose Creek

- Protecting Blue Ridge Parkway viewshed
- Access to OMVT (trail)
- Protect wildlife & natural areas
- 535 ac /\$720K



**ROSE CREEK – 535 acres along Blue Ridge Parkway
1.33 miles of OMVT**



Rose Creek

535 Acres along Blue Ridge Parkway

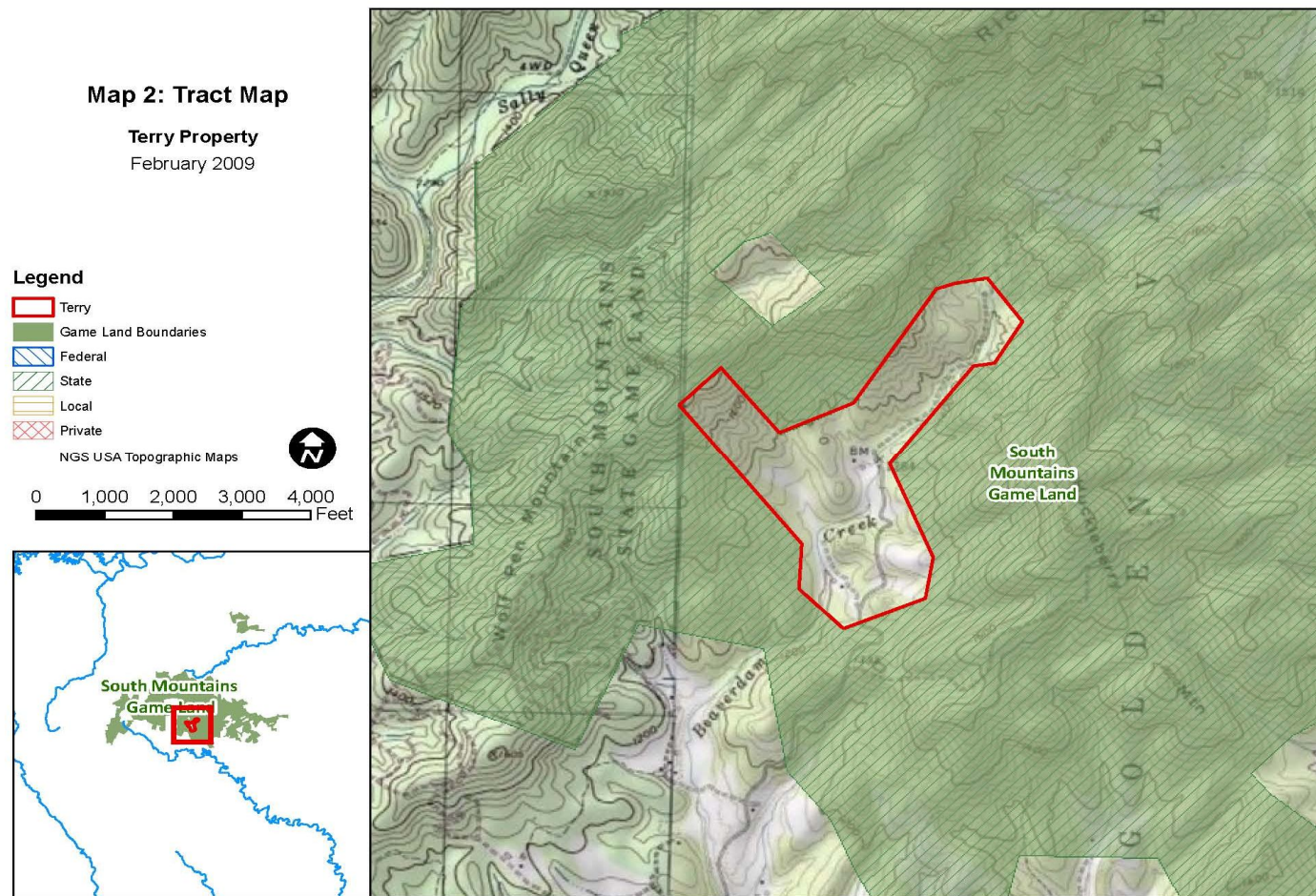
**Riparian Buffers/Abundant
Wildlife**



Terry Tract

260 Acres In-Holding

South Mountains Game Land



Public access available from SR 1736



Terry Tract

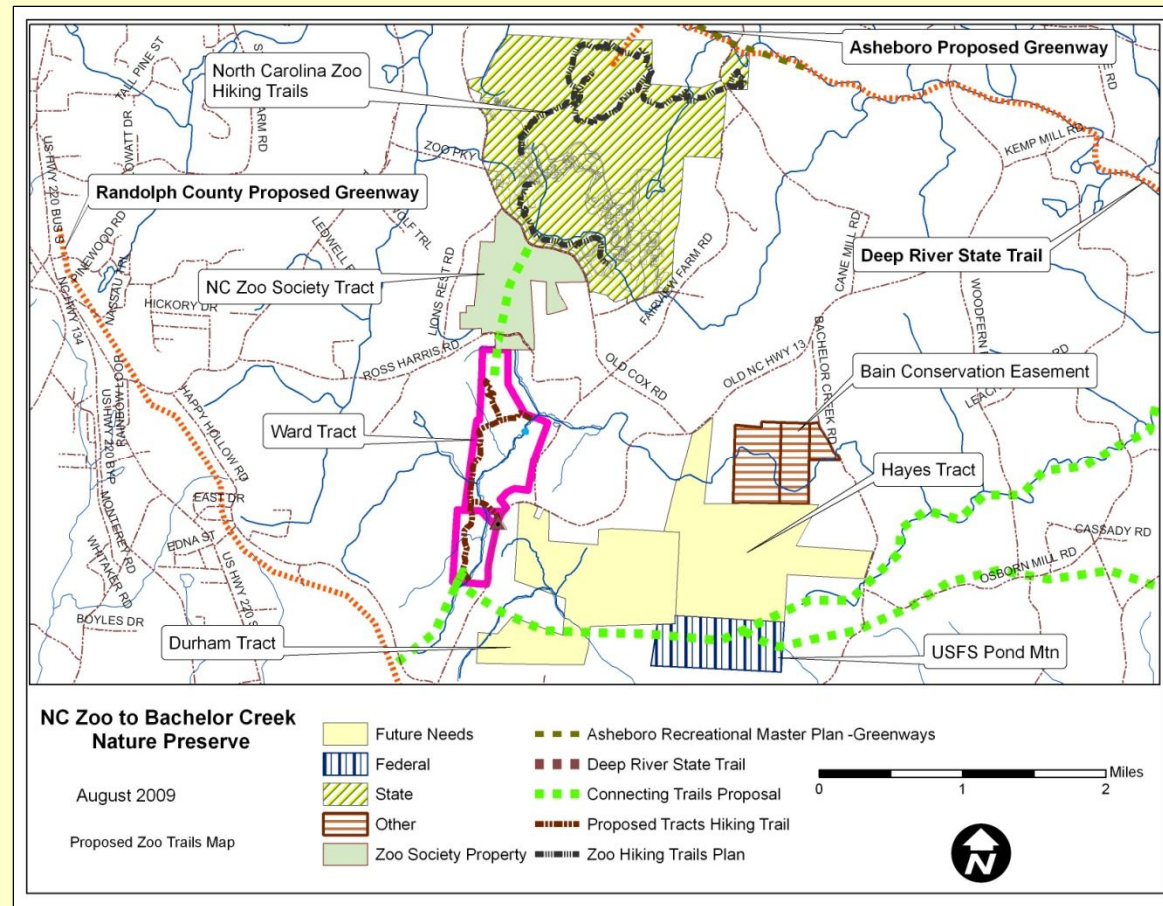


Bachelor Creek Nature Preserve



Randolph County, North Carolina

Trail Linkages



Possible connections to: NC Zoo Trails, Deep River State Trail, Asheboro and Randolph County Greenways, Seagrove Pottery Trail

Area Linkages



Zoo City Park



Asheboro to Zoo Greenway



Seagrove Potteries



Deep River State Trail

Stagville State Historic Site Land Acquisition

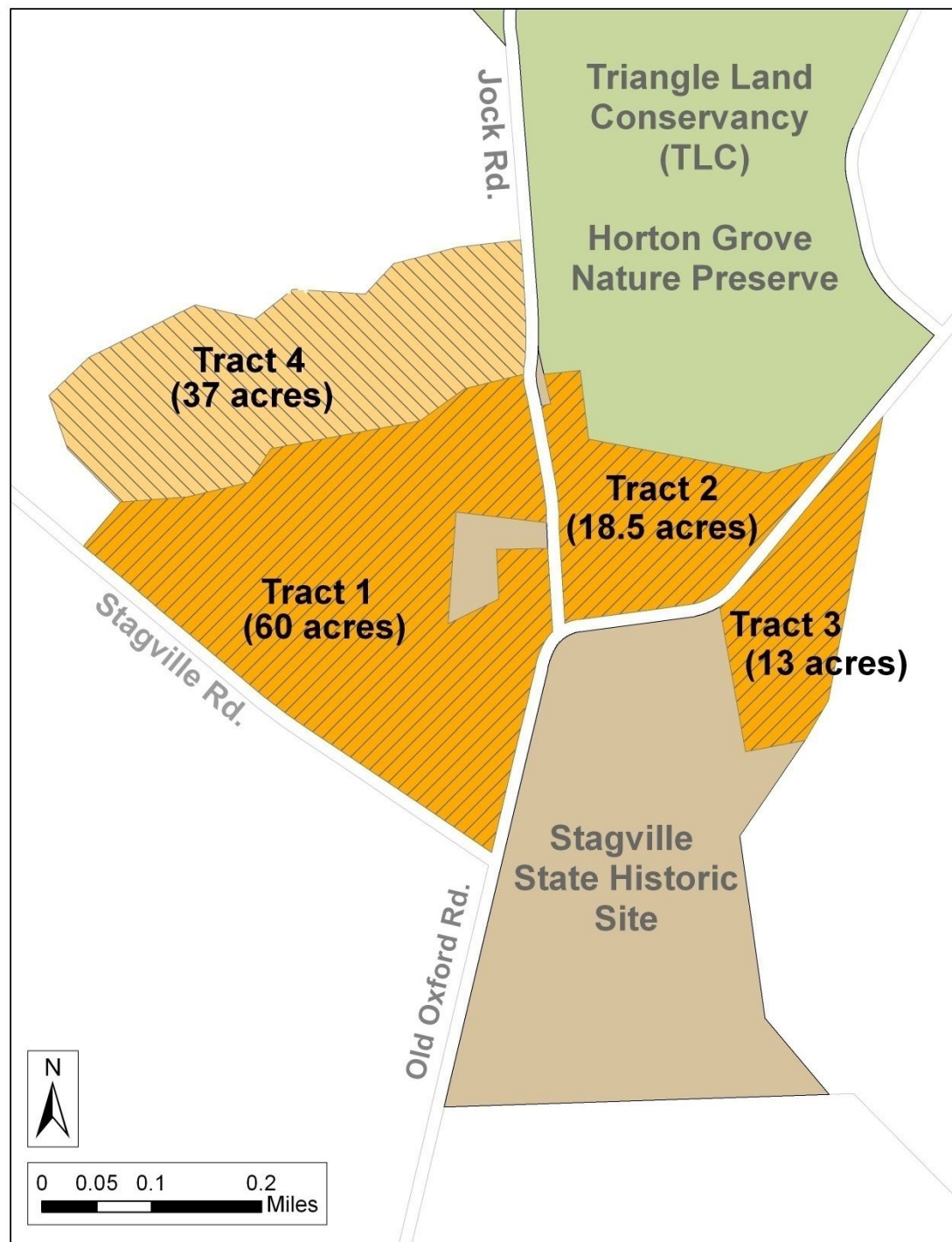
Durham County



Bennehan House

Slave House at Horton Grove





Ochlawaha Bog

Plant Conservation Preserve

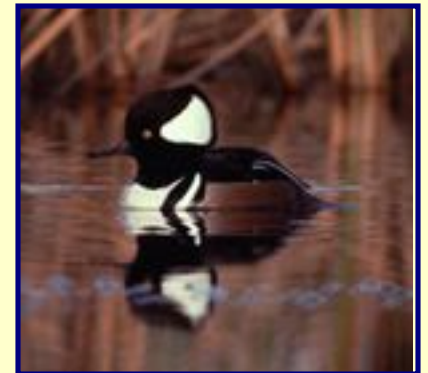
- Critical conservation priority to AG-PCP and USFWS and others since 1990's.
- Fall 2008 project, just closed 2010
- Priority because USFWS more than 100% matched with restoration grant that would provide jobs in Henderson County



Bunched Arrowhead (*Sagittaria fasciculata*)

Moving Forward

- Maximize federal matching monies
- Potential Economic Impact Key
- Prioritization and coordination with other Trust Funds (Quad Trust Meeting)
- Slow down, don't stop
- Use private donations to help buy time
- Consider Role in Climate Change Adaptation





Additional Information

Lisa.riegel@ncdenr.gov

(919) 715-8014