

North Carolina's Basinwide Water Quality Management Planning Program

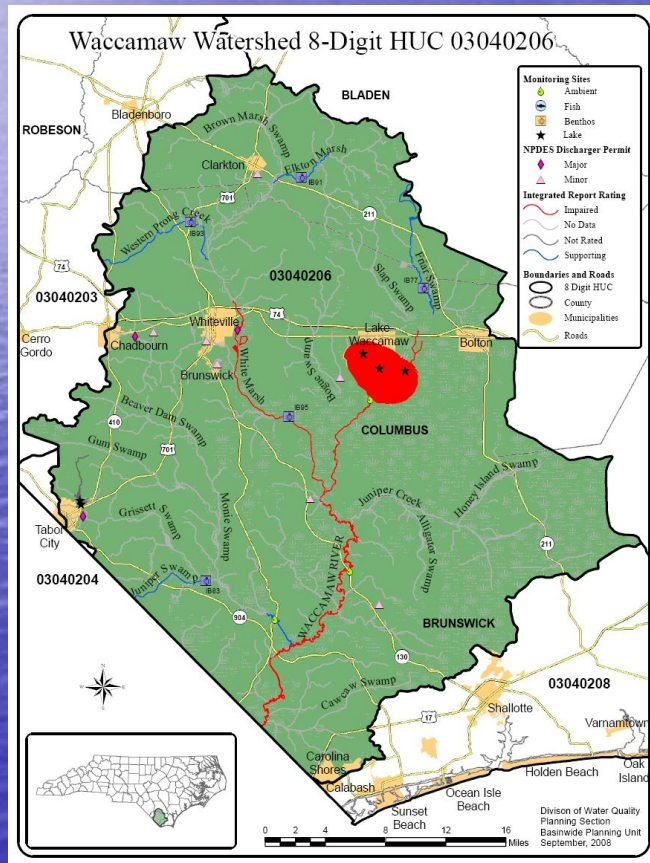
**Division of Water Quality
Department of Environment
and Natural Resources**



NC River Basins for Water Quality Management Planning



Purposes of the Basinwide Water Quality Management Plans

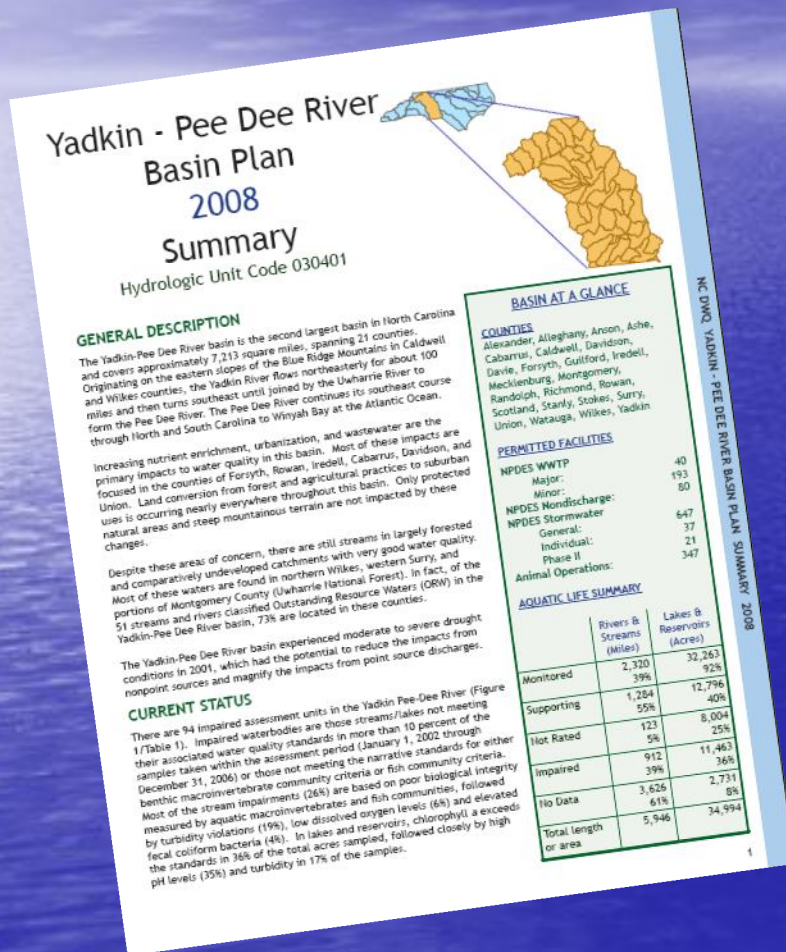


- Target areas in need of additional water quality protection;
- Better evaluate cumulative effects of pollution;
- Meet EPA program reporting requirements; and
- Improve public awareness and involvement.

Content of a Basinwide Water Quality Management Plan



What does NC get?



- Increased public understanding and participation;
- Focused resources;
- Comprehensive NPDES permitting;
- Sound ecological planning; and
- Integration and coordination of programs and agencies.

Annual Report to ERC

- Numerous Public Outreach Activities
- Completed Broad, Yadkin Pee-Dee & Neuse Plans
- Status of Water Quality in Those Basins
 - Metals below standards
 - Mercury fish consumption advisory
 - Closed Shellfish Waters
 - Chlorophyll-a above standards

QUESTIONS?



Contact:

Dianne Reid

919-807-6427

dianne.reid@ncdenr.gov

<http://h2o.enr.state.nc.us/basinwide/>