



Environmental Review Commission



February 18, 2010

Ronald Salati



Ownership of Clear Path Recycling LLC

DAK Americas LLC - Highlights

- **Ownership** - Division of Alfa S.A.B. de C.V., Monterrey, Mexico
- **U.S. Employment** – 1,200 people
- One of the largest PET, Fiber, and PTA producers in the Americas.

Shaw Industries - Highlights

- **Ownership** - Subsidiary of Berkshire Hathaway, Inc.
- **Employment** - 28,000 Employees
- One of the largest carpet and flooring producers in the world.



Clear Path Recycling LLC

– Plant Startup Plan

- Phase 1 (Q4 2010) – 160MM lbs of postconsumer bottles consumed
- Phase 2 (Decision in 2011) – Additional 120MM lbs of postconsumer bottles needed.

– Job Creation

- **Construction Phase (Temporary Jobs) – Currently 30-40 people working on site.**
 - Waste Water Pre-Treatment Plant
 - Refurbishing Renovating Operations Buildings
 - Electrical and Utilities Infrastructure Delivery
 - Recycling Equipment receiving and installation
 - Silo product storage and bulk loading
 - Administrative Office Construction
- **Plant Operations (Permanent Jobs) – Current Payroll is 16**
 - 80 jobs created by Q4 2010
 - 29 additional jobs created in Phase 2

– Cumberland County NC - Economic Stimulus

- **Construction Jobs – related hotel and food & beverage sales**
- **Operations Jobs – Strengthened Tax Base (Wage, Sales, etc...)**
- **Equipment/Services Purchases – Plant truck, Cleaning, Other support Services, Etc...**



Cedar Creek Site

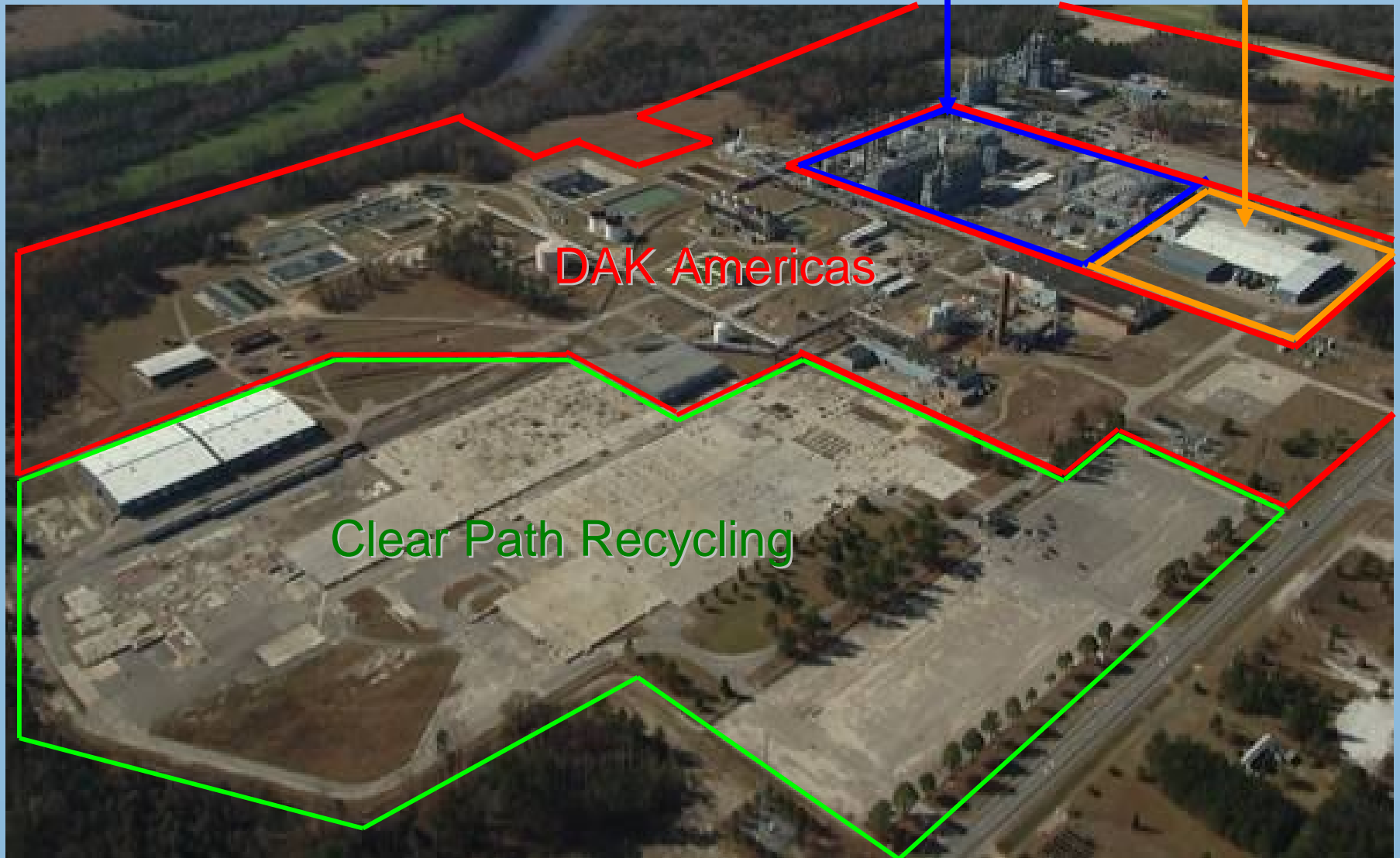
Fayetteville, NC, USA

DuPont -Teijin Films

Vacant Production Plant

DAK Americas

Clear Path Recycling



Unloading PET bottles onto the bottle storage yard, prior to startup.



Grading and construction of the waste water pre treatment plant



Grading the electrical substation Pad





Refurbishing an existing building
•Equipment foundations and trenches

Importance of Recycling in the Community

– Current US Collection Statistics (NAPCOR)

- Recycle rate nationally is 27%
- Bottles currently collected for recycling 1.4 Billion lbs.

– Total # of bottles needed by CPR: 5 Billion bottles per year

- The equivalent volume of 9 Wal-Mart Supercenters per year.
- Equivalent to 900,000 barrels of oil per year.

– Bottle Legislation

- NC Landfill Ban - October 2009
- NY & CT – Expanded deposit legislation – Q4 2009
- TN – Legislative effort this year for bottle bill



Thank You

Ronald Salati
Clear Path Recycling LLC
rsalati@clearpathrecycling.com

