

A scenic photograph of a swampy area, likely a cypress swamp, with numerous trees displaying vibrant autumn foliage in shades of orange, yellow, and red. The water is calm, reflecting the trees and sky. In the lower right foreground, a person wearing a hat and a green shirt is kayaking in a yellow kayak, holding a paddle. The overall atmosphere is peaceful and natural.

# **Environmental Review Commission**

## **North Carolina State Parks and Recreation Overview & PARTF 2011 Annual Report**

***December 14, 2011***

**Lewis Ledford, Director**

# Parks and Recreation Trust Fund (PARTF)

*Established to provide funding for:*

## **State Parks**

- land acquisition
- capital improvement projects

## **Local governments P & R**

- matching grants for local parks

## **Coastal Beach Access Program**

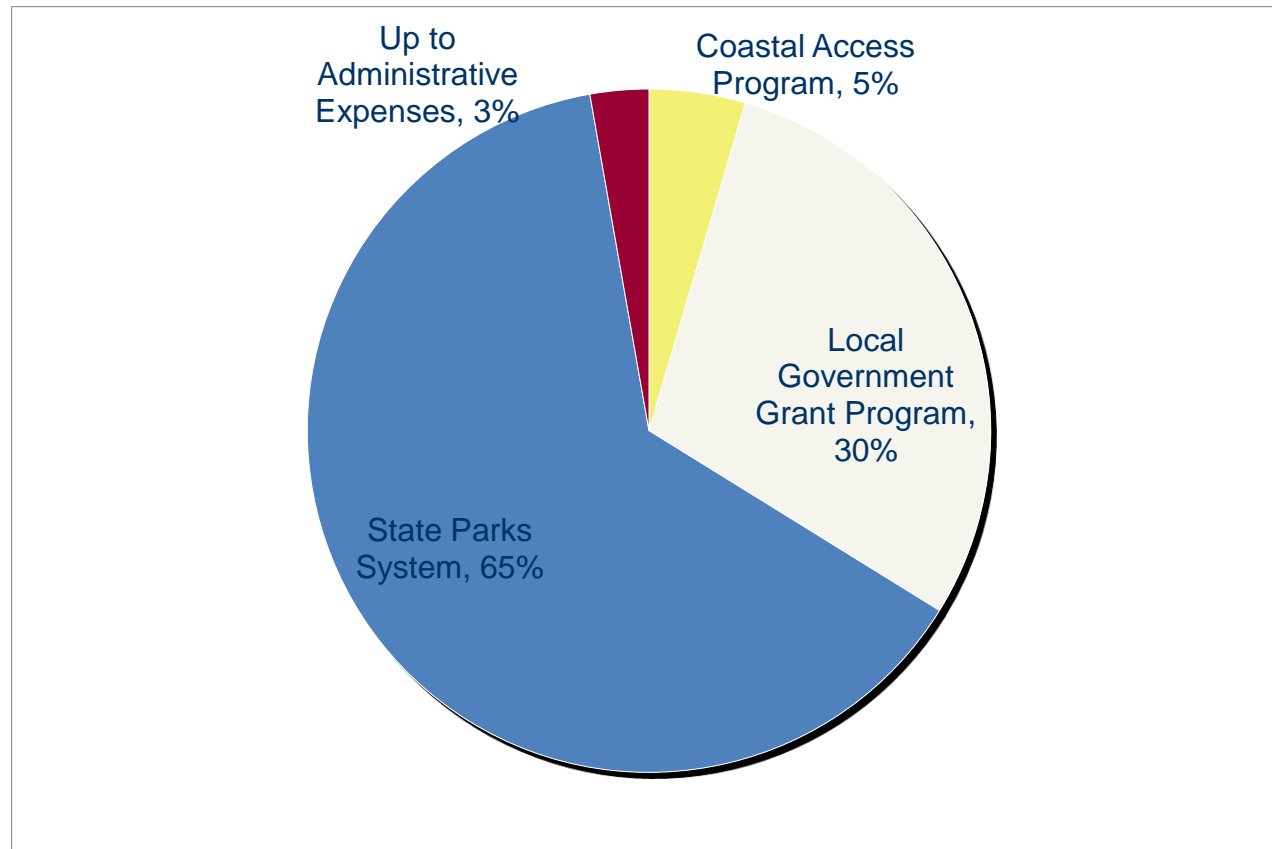
- matching grants for beach access



Chimney Rock State Park

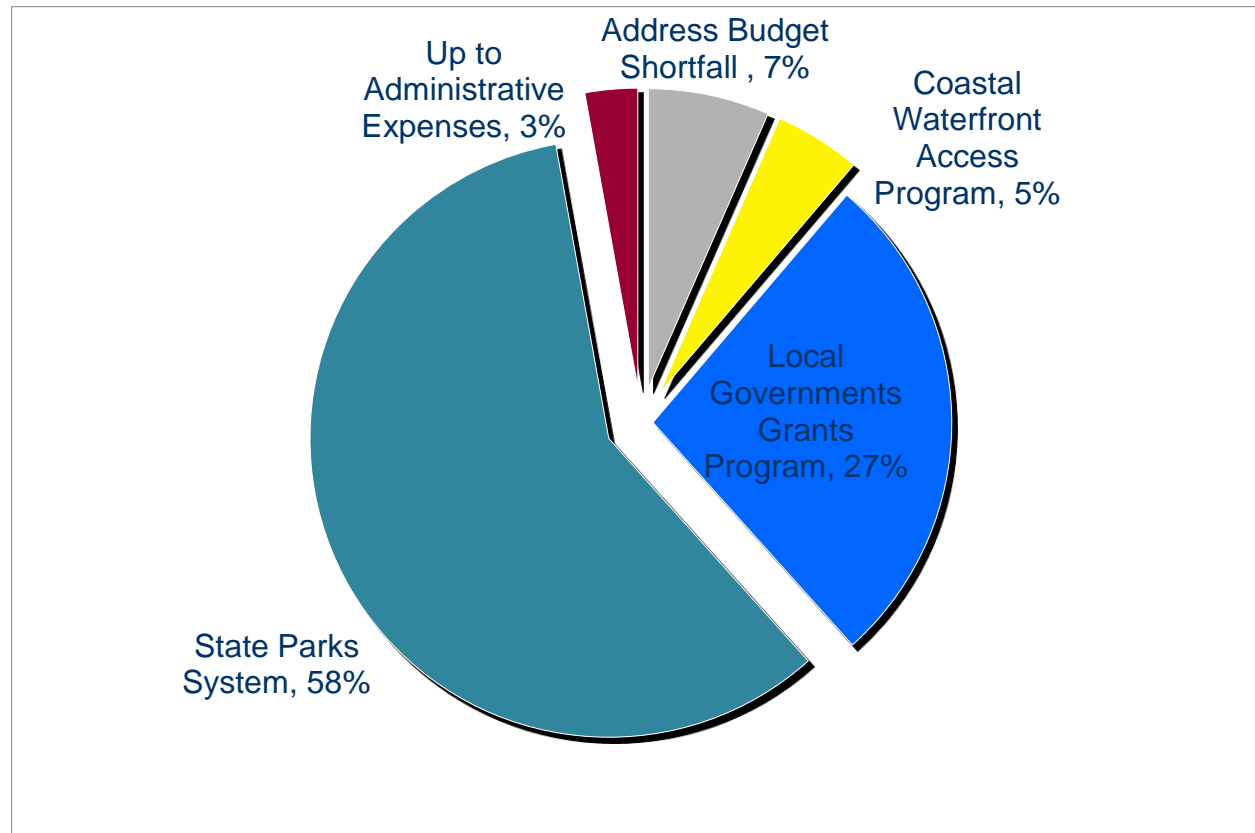


# PARTF Revenue Allocated by General Statute





# PARTF Revenue Allocated by Purpose 2010 - 2011





## PARTF Revenue 2010 - 2011

- Primary revenue source: \$1.00 tax per \$500 value for real estate transfers
- PARTF receives 75 percent of the state's portion of the revenue (FY 10-11 = \$25.8 million)
- \$1.7 million transferred to the General Fund to address budget shortfall
- Total PARTF Revenue in 2010-11: \$24.1 million



# FY 2011-12 State Budget Allocation of PARTF Revenue

## Revenue Diverted or Transferred

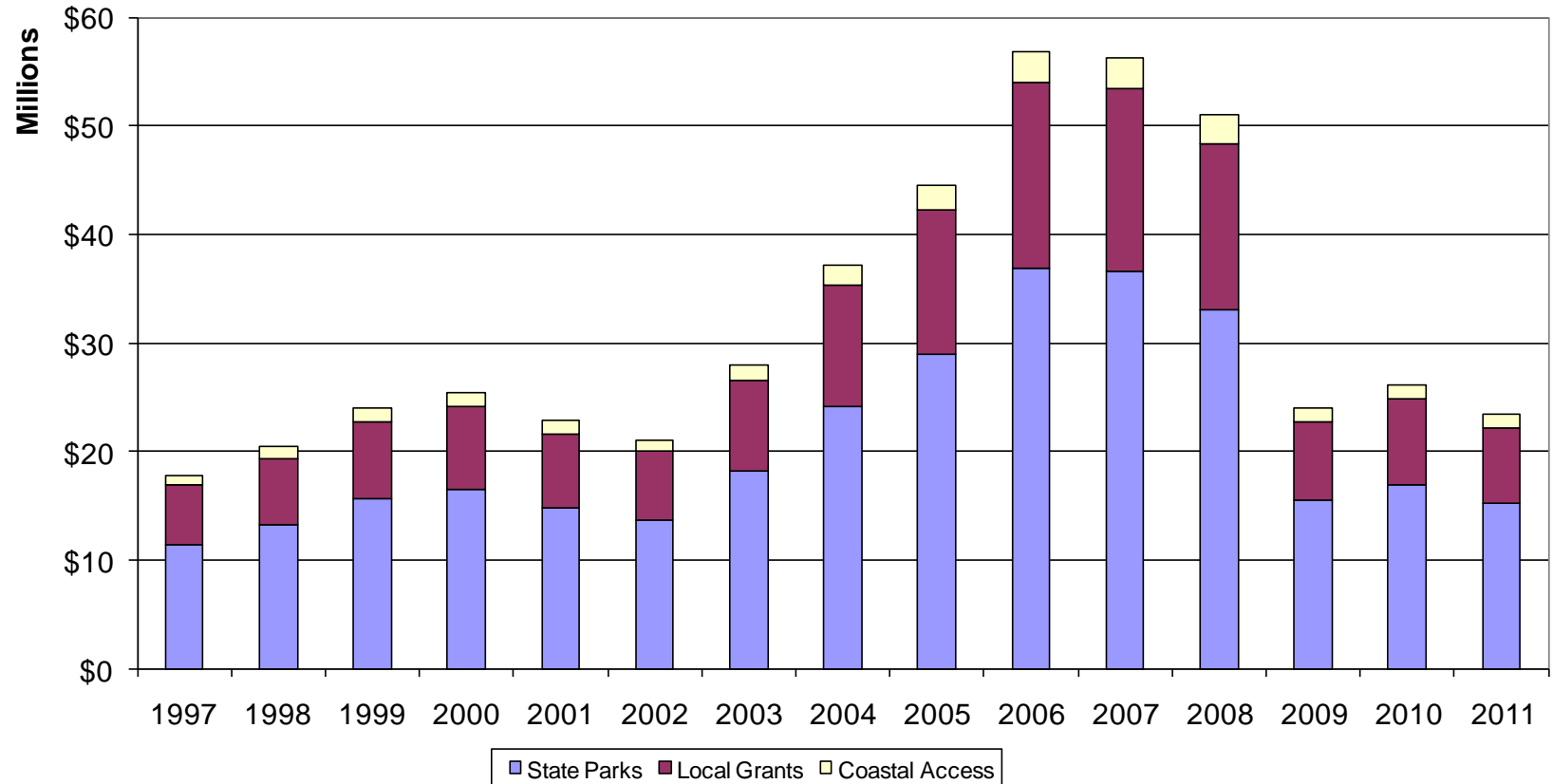
	(millions)
Diverted to the General Fund	\$ 8.4
Division of Parks and Recreation operating budget	\$ 6.0
– DPR operating budget was reduced by \$6 million	
– Includes 3 percent operating budget for the PARTF program	

## Revenue Available for state parks, local parks and beach access

	(millions)
State park projects – land and capital	up to \$8.0
– Includes \$ 7.2 million for COPs repayment	
– About \$ 800,000 available for current projects	
Matching grants to local governments	up to \$4.23
Beach Access program	<u>up to \$ 0.7</u>
Total	\$27.3



## PARTF Revenue by Purpose Since 1997





# North Carolina Parks and Recreation Authority



Bill Ross, CHAIRMAN  
Orange County



Jennifer Andrews  
Chatham County



Lydia Boesch  
Moore County



Daryle L. Bost  
Mecklenburg County



Loretta Clawson  
Watauga County



Robert Epting  
Orange County



Ashley Futrell Jr.  
Beaufort County



Cody Grasty  
Haywood County



Woodard Gurley  
Lenoir County



H. Boyd Lee  
Pitt County



Philip K. McKnelly  
Wake County



Monroe Pannell  
Catawba County



John S. Stevens  
Buncombe County



Lisa Wolff  
Alamance County



Edward W. Wood  
New Hanover County





# **PARTEF Grant Program for Local Governments**



# PARTF Grants for Local Governments

## Basic Facts

- Applicants – Local governments
- Eligible Projects – Acquire park land and build recreational facilities for the general public



Louisburg – Walking Trail



# PARTF Grants for Local Governments

## Basic Facts

- Maximum Grant Amount - \$500,000
- Local governments match the PARTF grant dollar-for-dollar.
- The value of donated property can be used as the local match.

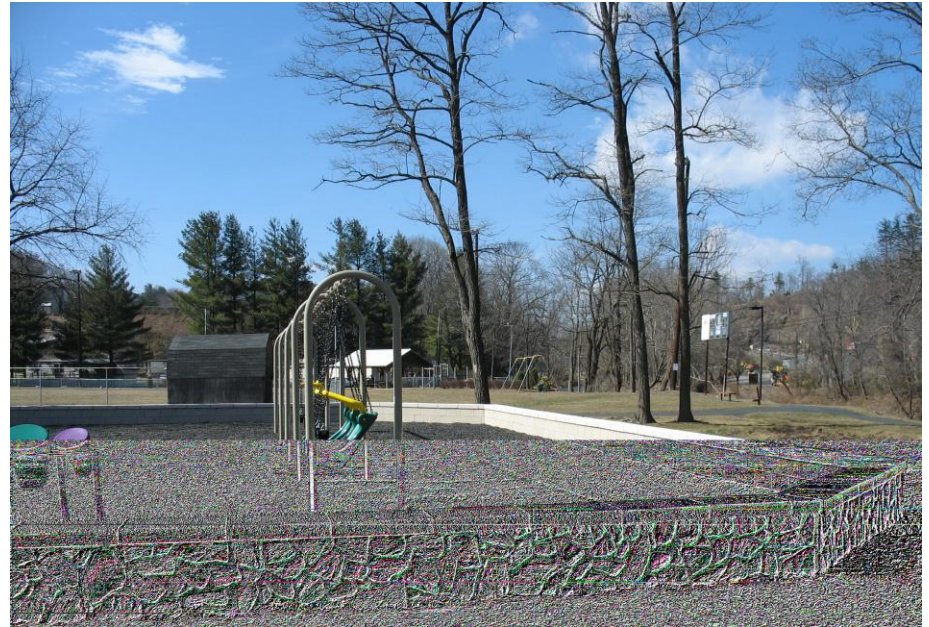


Rowan County – Dunn's Mountain

# PARTF Grants for Local Governments

## Important Dates

- Applications due January 31
- The Parks and Recreation Authority selects grant recipients in May and July



Spruce Pine – Brad Ragan Park

# PARTF Scoring System: An Objective Evaluation

- Number of recreational facilities provided
- Planning the project
- Involving the public
- Acquiring land
- Applicant's ability to operate and maintain the project
- Quality of the park site



Roanoke Rapids – Picnic Shelter  
on Lake Gaston



# Selecting Grant Recipients: Other Factors Considered

- Distributing grant awards across the state
- Population of the applicant
- Administration of previous grants
- The applicant's justification for the project

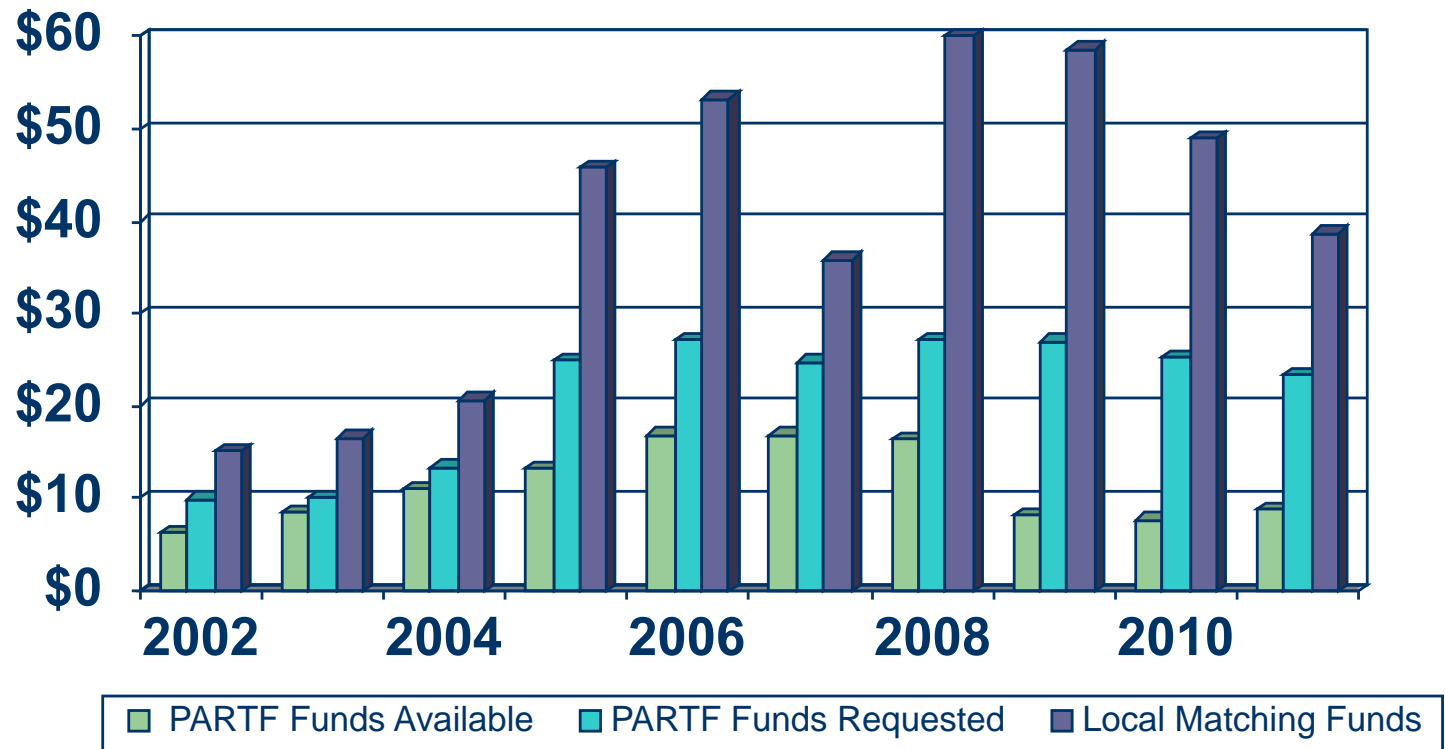


Chowan County – Community Center

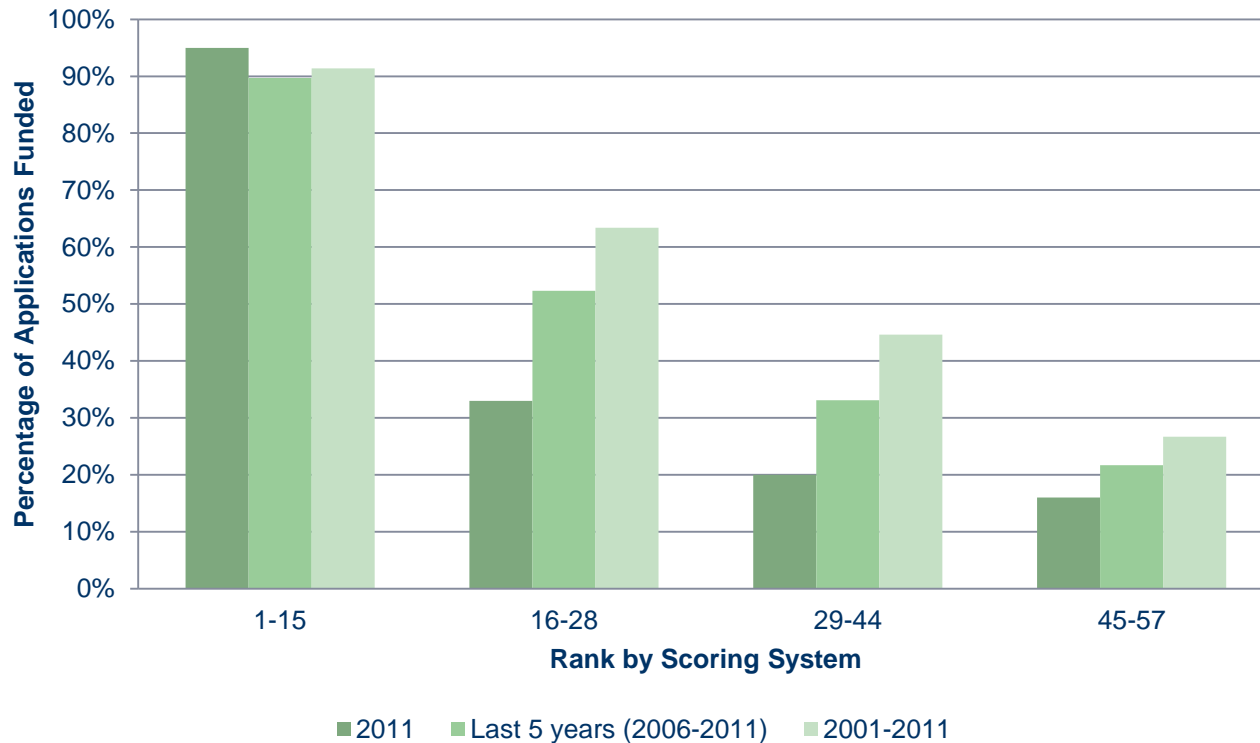


## Grant Requests from Local Governments Exceed Funds Available

Millions



## PARTF Scoring System: the highest-ranked applications receive the most grants

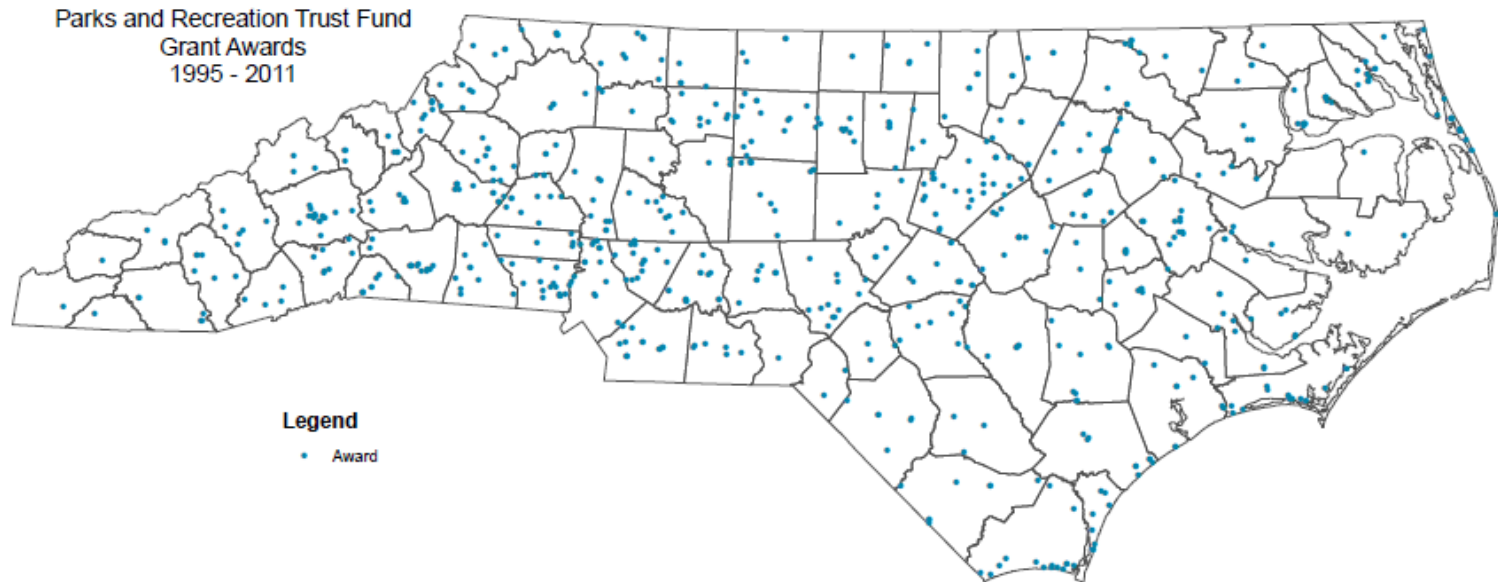


Only a quarter of the lowest ranked projects receive a grant.



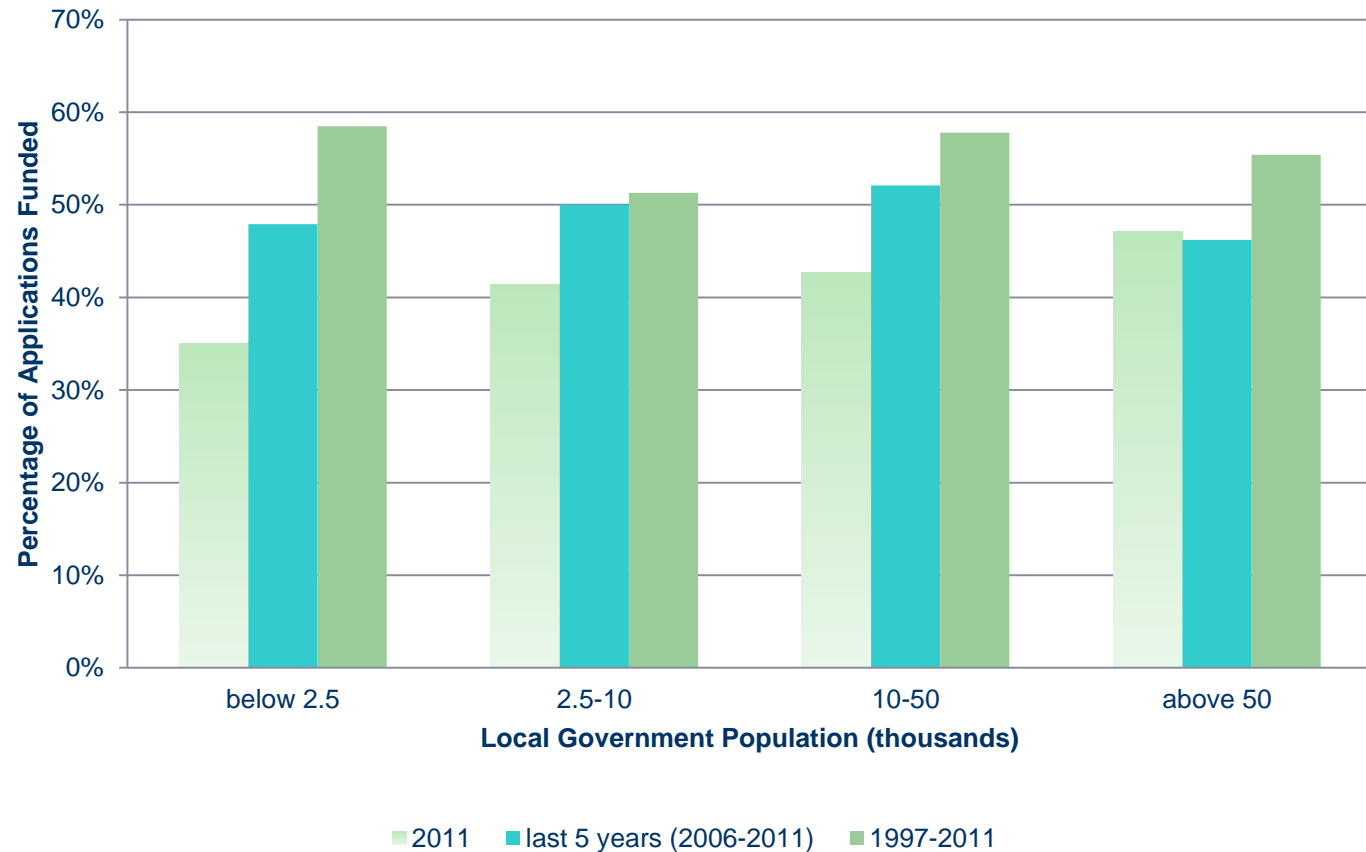


# Geographic Distribution



- Grants awarded in 99 of 100 counties
- More than 350 local governments have received a PARTF grant

# Grants have been evenly distributed to small, medium and large communities



# PARTF Local Grant Requests and Awards 2011

## Applications

- 80 applications received proposing \$62.1 million in land acquisition and recreational facilities
- \$23.3 million in grant requests
  - (\$2.6 requested for every \$1 available)
- \$38.7 million in local matching funds committed

## Grants Awarded

- 30 grants awarded to projects totaling \$26.3 million
- \$8.7 million in PARTF funds awarded
- \$17.6 million in local matching funds leveraged





## Examples of PARTF Grant Awards 2011

- **Lenoir County — Woodman Water Park**—This 3.1 acre water park will be the largest in eastern North Carolina.
- **Johnston County — Town of Clayton – Trailhead for the Mountains-to-Sea Trail** —The 79.3-acre site offers 3,000 feet of forested Neuse River riverfront.
- **Gaston County—Town of Stanley - Harper Park** — Harper Park will be the Stanley's first public park, the result of a 10-year local fundraising effort.



# **PARTF Grant Program Benefits to Local Governments**

## **Helping local economies**

- Building park facilities
- Creating jobs
- Supplementing local budgets



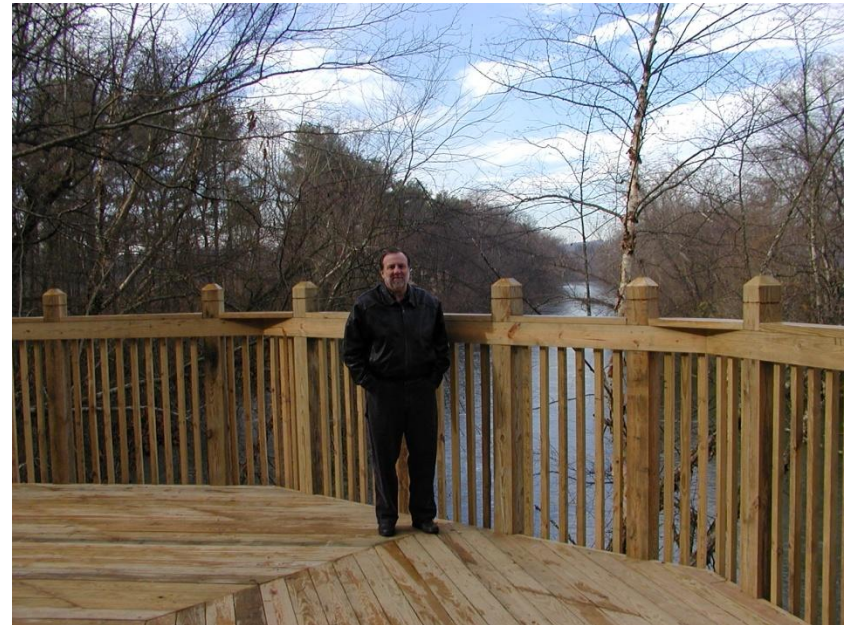
**City of Wilson – Athletic Complex**

# PARTF Grant Program

## Benefits to Local Governments

### Greenways

- Buffer streams and improve water quality
- Increase property values and tax revenue
- Provide opportunities for exercise



Overlook – Catawba River Greenway – City of Morganton



# PARTF Grant Program

## Benefits to Local Governments

### Health Benefits

- Encouraging healthy, more active lifestyles with local parks
- Addressing childhood obesity by promoting exercise
  - North Carolina ranks 5<sup>th</sup> in the US for childhood obesity
  - Four of the leading 10 causes of death in the US are related to obesity



Skateboard Park -  
Asheboro







# **PARTF Capital Funding for State Park System**



# **PARTF Capital Improvement Projects Bring Jobs to NC Communities**

**19 projects for the State Parks System totaling \$8.4 million including:**

- **Rutherford County - Chimney Rock State Park**
  - Elevator and Sky Lounge Improvements - complete modernization of the elevator, structural improvements to the building, replacement of the elevator emergency exit stairway and ADA modifications to the restrooms and all portions of the building.
- **Rockingham County – Haw River State Park**
  - Initial development to provide public access of nearly 700 acres that is currently undeveloped to serve the Triad area.
- **Halifax County – Medoc Mountain State Park**
  - Construction of up to 10 miles of bicycle trails to provide a new opportunity via a partnership between the park and mountain bike groups.



# North Carolina State Parks - *Economic Impact Study*

Parks, Recreation and Tourism Management

NC STATE UNIVERSITY



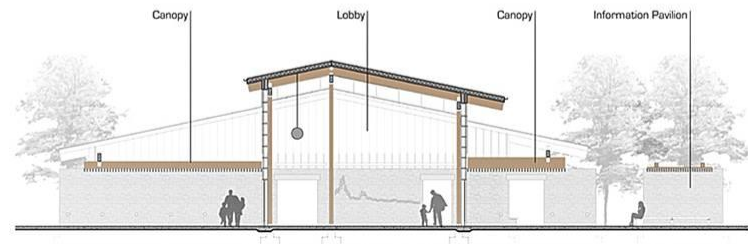
Recreation Resources Service

- State Parks contribute \$419 million to local communities across the state – *based on NC State University study*
- Each tourist spends an average of \$23.50 each day of a visit





# Recent Accomplishments – Visitor Facilities



**Raven Rock State Park Visitor Center  
LEED Certified Gold**



# Fort Macon State Park

## Coastal Education and Visitor Center



# Fort Macon State Park

## Coastal Education and Visitor Center

- First non-university state building with LEED Gold Certification (Leadership in Energy and Environmental Design)







## Cliffs of the Neuse State Park Visitor Center Dedicated







## **Elk Knob State Park**

### **Summit Trail completed with volunteers**





## Morrow Mountain State Park Exhibit Hall Dedicated







before

after



## Mount Mitchell State Park Viewing Platform







## Lake James State Park - Paddy's Creek Section





**Courtesy Docks at Jordan Lake State Recreational Area**







## Carolina Beach State Park Marina Improvements





before



after

## Chimney Rock State Park Trail Project





# **PARTF Land Acquisition Projects in the State Parks System FY 2010-11**

**6 projects for the State Parks System totaling 430 acres including:**

- Carvers Creek State Park
  - Chimney Rock State Park
  - Elk Knob State Natural Area
  - Mount Mitchell State Park
  - Weymouth Woods State Nature Preserve
- 
- In addition, \$7.2 million in COPs repayment for lands purchased at Chimney Rock, Lake James, Grandfather Mountain and Haw River state parks.



# PARTF Land Acquisition Projects



Carvers Creek State Park---245 acres---Two tracts for the Sandhills section to provide land for facilities serving the Fort Bragg area and buffering the base.



# PARTF Land Acquisition Projects



Chimney Rock State Park---111 acres--- on Rumbling Bald, within a nationally significant natural heritage area.





# PARTF Land Acquisition Projects



Mount Mitchell State Park---4 acres---Small tract adjacent to existing state ownership in nationally significant high elevation natural communities in the Black Mountains.



# Grandfather Mountain State Park



- Diversity of habitats - 16 ecological communities.
- Rare species - 73 identified; 32 federally or state listed.





## Grandfather Mountain Learning Lodge



# Grandfather Mountain Learning Lodge

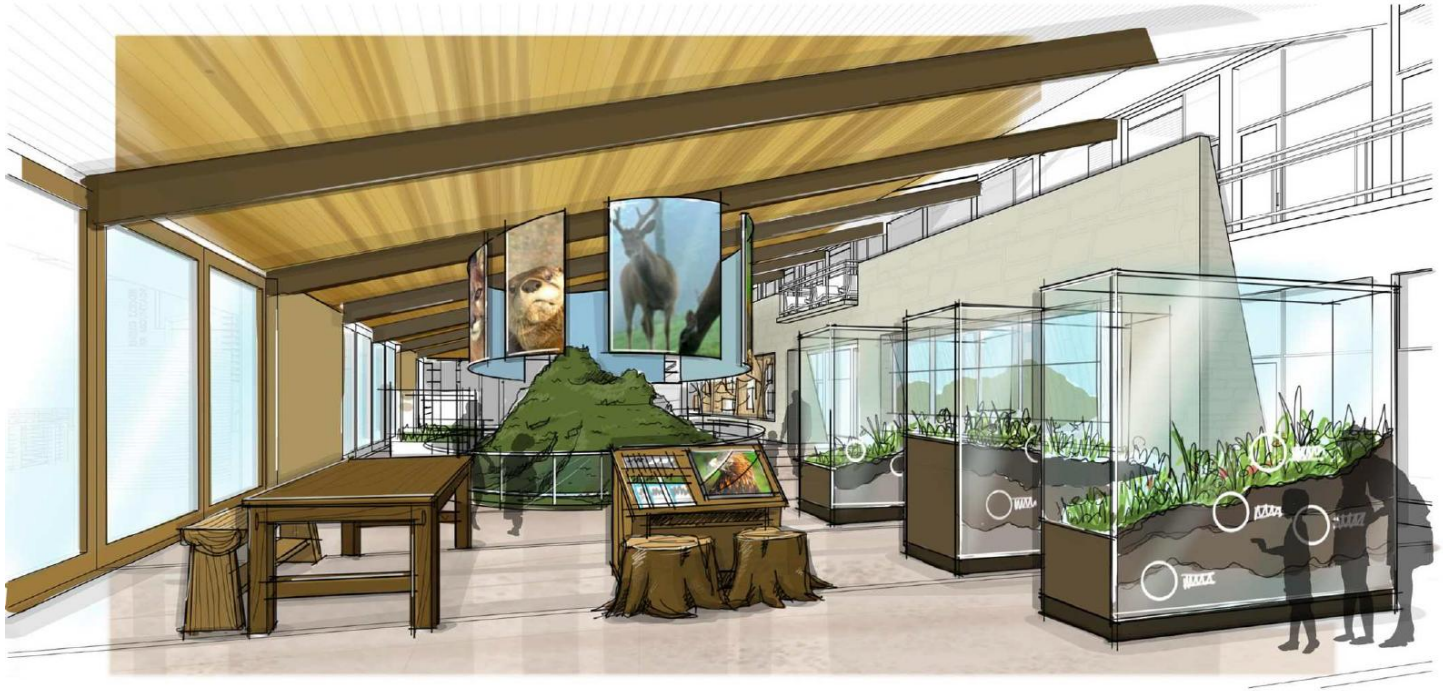


Exhibit Hall

## Leveraging Land Acquisition Funds

- To supplement reduced PARTF revenues over the last two fiscal years, the Division of Parks and Recreation has used \$8.8 million of private and federal funding for land acquisition projects.



**Yellow Mountain State Natural Area**



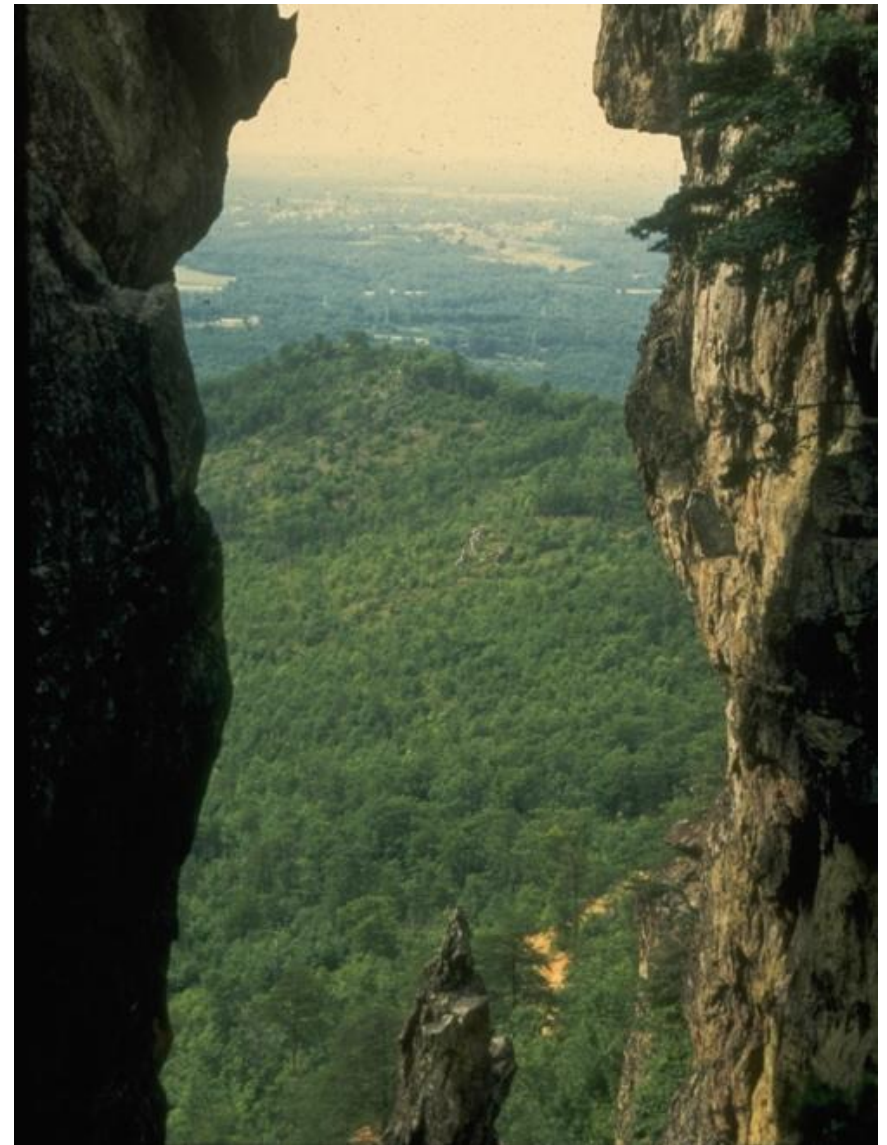


***North Carolina State Parks*** - a system of state parks, state recreation areas, natural areas, state trails, state rivers and state lakes

- 216,293 acres



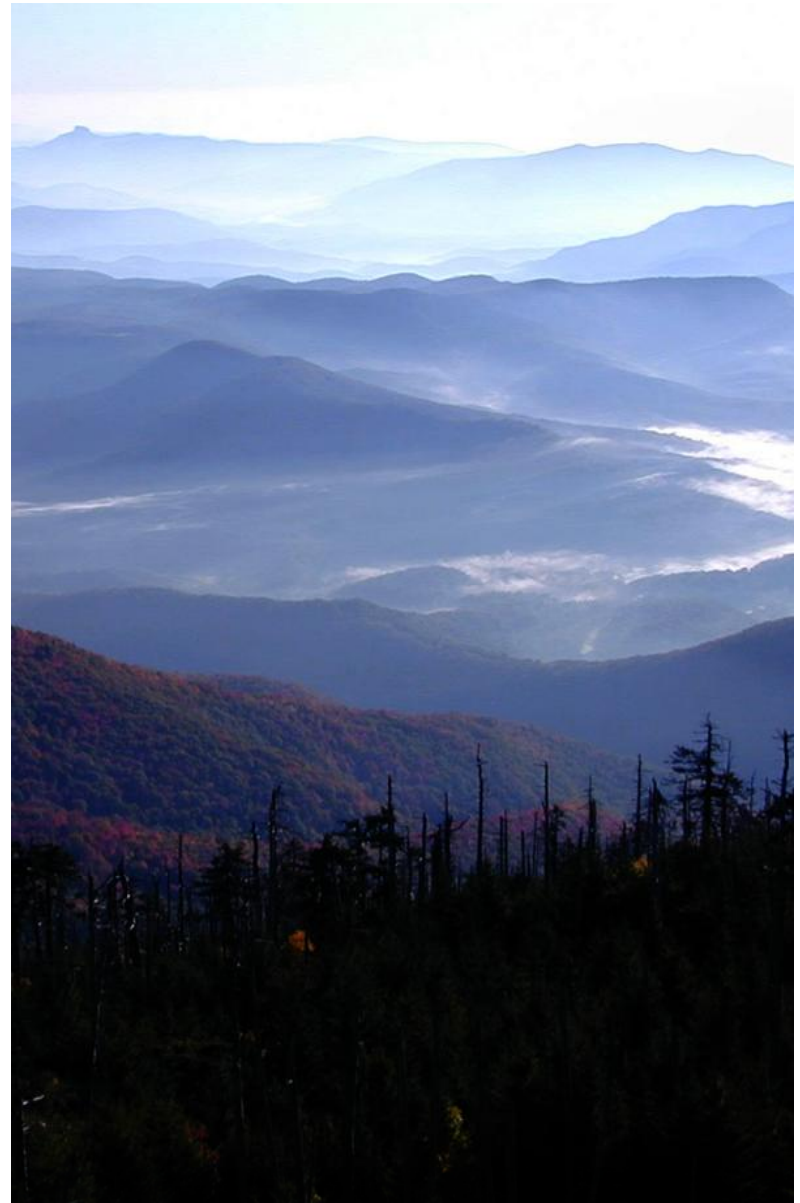
**Singletary Lake State Park**



**Crowders Mountain State Park**

*“...it shall be the proper function of the state to acquire and preserve park, recreational and scenic areas (forests, wetlands, estuaries, beaches, historical sites, open lands and places of beauty) and to control pollution of air and water”*

--North Carolina  
Constitution, 1971





## -- 1987 State Parks Act

*“...shall consist of parks of representative examples of the resources sought to be preserved ... unique archeologic, geologic, scenic, biologic, and recreational ... together with surrounding lands ... promote understanding and pride in the natural heritage of the State...”*

GS 113-44.7 – 44.14



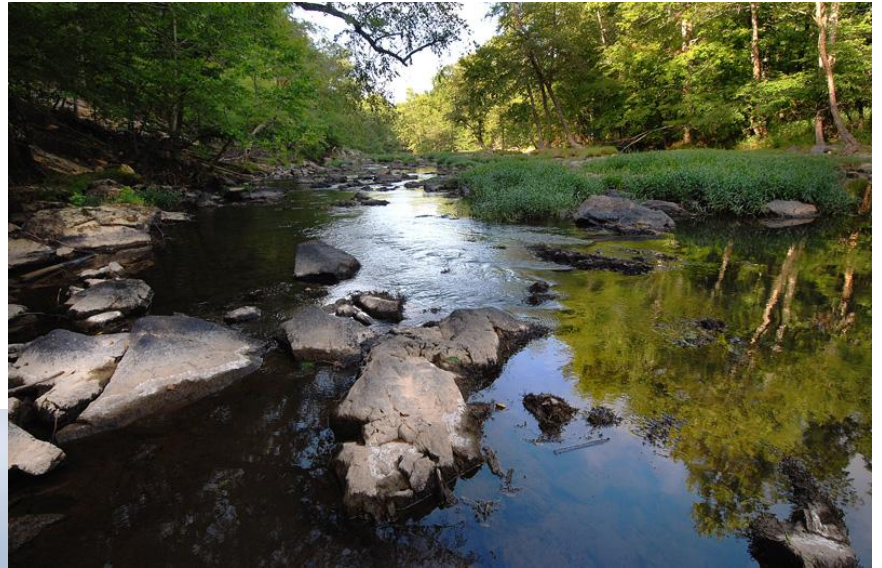
# Parks Visitation at Record Levels!



2000.....	11.8 million
2001.....	12.6 million
2002.....	13.2 million
2003.....	11.2 million
2004.....	11.7 million
2005.....	12.3 million
2006.....	12.6 million
2007.....	13.4 million
2008.....	12.4 million
2009.....	14.2 million (new record)
2010.....	14.0 million
2011.....	<i>14 million through October</i>



## Hammocks Beach State Park



## Eno River State Park

*Legacy  
...and  
Mission*







Stone Mountain State Park

## Low-Cost, Low-Impact Recreation







**Lake Waccamaw State Park**



**Natural Resource Protection**





## Professional staff





## Partnerships



**Eno River  
State Park**

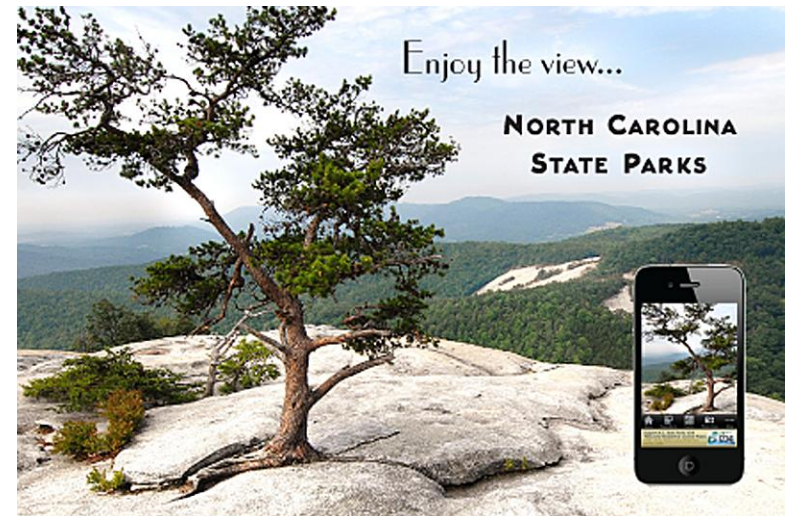




# A Look Back – 2011

*for North Carolina State Parks and Recreation*





## Mobile App Released





**Friends of Fort Macon, Wayne  
Community College .... donate**



**Fort Macon State Park's New 32-Pounder Cannon**





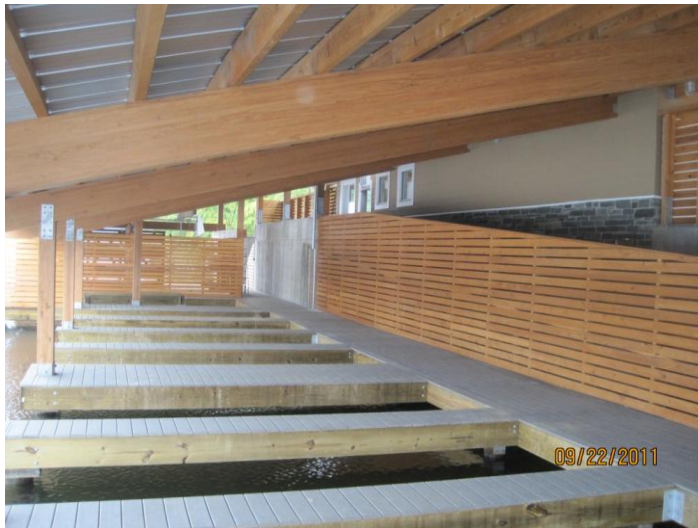


completed late 2011



## Pettigrew State Park Maintenance Facility





## Morrow Mountain State Park Boathouse







## AmeriCorps Volunteers







## **Yellow Mountain State Natural Area**

**Acquiring significant natural communities**





## Day Camps Held at Jones Lake State Park





## Haw River State Park Held Third Annual Grand Camp



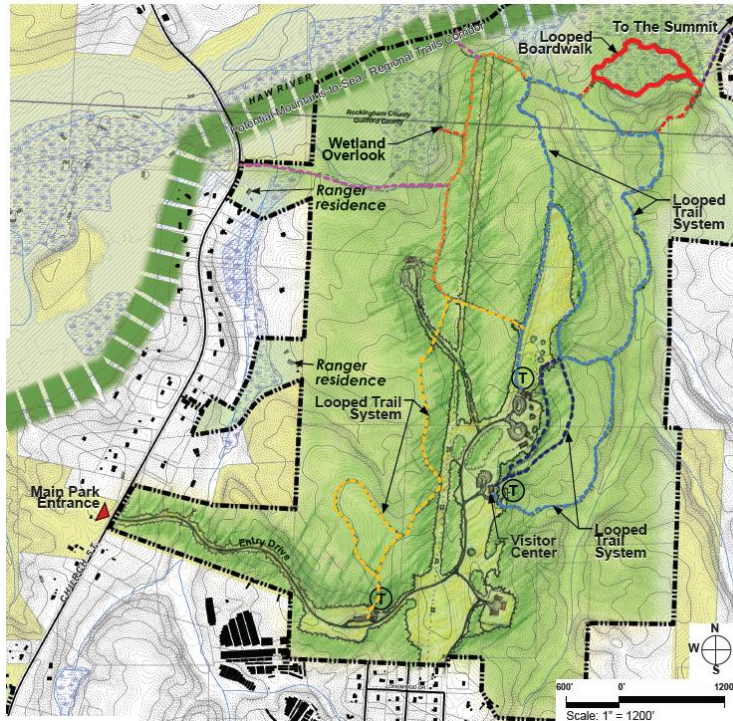




## **Volunteers at William B. Umstead State Park Group Camp Cabin Restoration**



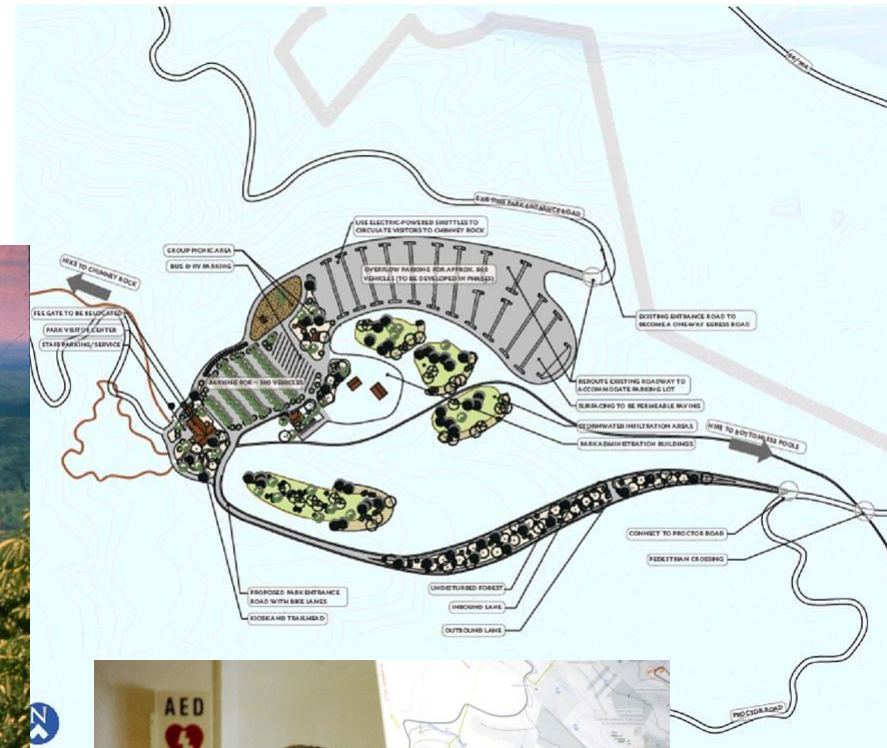
# New Opportunities – Planned Visitor Facilities



**Haw River State Park** - Future trails, picnicking and camping near 1.6 million people in the Triad.







## Chimney Rock State Park Master Plan charts new visitor opportunities





Front Entrance Rendering



Rear Rendering

Project expected to be completed by  
Fall 2012.

Includes a Maintenance Facility and  
two day use areas both with a picnic  
shelter and a restroom.

Anticipate LEED **Gold**

## Gorges State Park Visitor Center



Currently under design



Front Rendering  
(top)  
Rear Rendering  
(bottom)



## Lake Norman State Park Visitor Center (and West District Office)





# Partners & Friends



**Friends of State Parks holds first conference**





ENO RIVER VALLEY COMMUNITY  
CELL PHONE AUDIO TOUR

FEW'S FORD

1

DIAL 919-317-6089 & PRESS 1

PRESS 1 TO REWIND

PRESS 2 TO PAUSE

PRESS \*0 TO LOG YOUR OPINION

*Use your cell phone to discover  
Eno River State Park*

Cell phone tour is FREE, your normal usage rates apply

Audio Tour created by UNC Chapel Hill Students as a Service Learning Project, Fall 2010

## Audio Tours Launched at Eno River State Park

Service Project by UNC Chapel Hill Students





## Ranger Honor Guard Formed



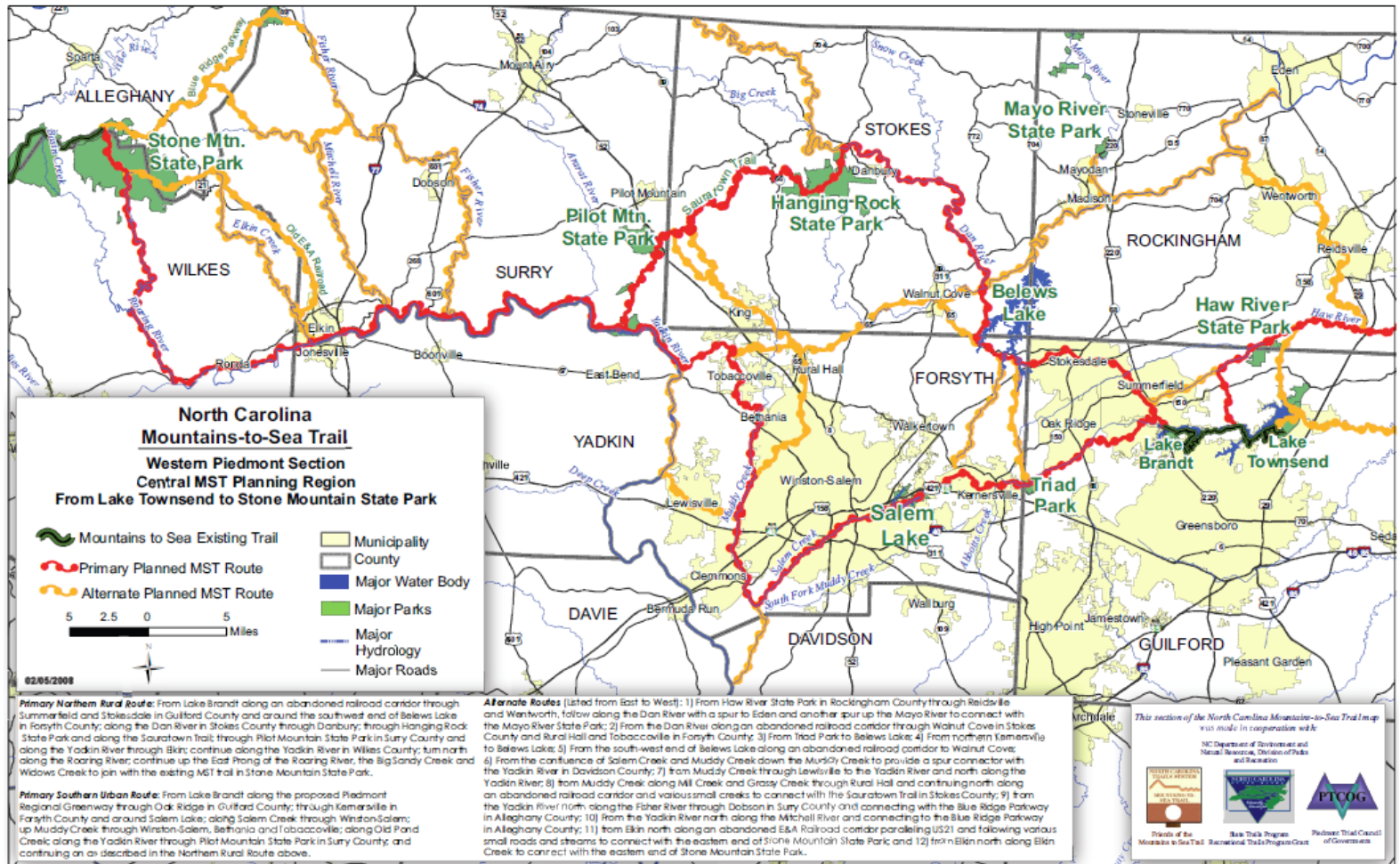


**Constructing the Mountains-to-Sea Trail –  
500 miles completed, more on the way**





# MST Piedmont West





# PUBLIC OPEN HOUSE WORKSHOPS

Sept 13<sup>th</sup>, 14<sup>th</sup> & 15<sup>th</sup>

## for the CROATAN REGIONAL BICYCLE PLAN + TRAILS PLAN

Share your ideas for regional trails and bicycle routes!

• Pleas drop-in in anytime during one of these workshops to receive information and provide input for these regional plans.

• Community staff and project consultants will be on-hand at each workshop to gather public input for each plan.

• Participants are encouraged to ask questions, share ideas, write and draw on public input maps, and learn about future opportunities to stay involved.

The counties of Carteret, Craven, Jones, Onslow, and Pamlico (and local municipalities) invite area residents to attend any of four public open house workshops for the Croatan Region Trails Plan and the Croatan Regional Bicycle Plan. The four opportunities to attend are in different locations throughout the region, but each will contain the same basic information:

September 13th 4:30-6:30 PM  
Jacksonville City Hall (Conf. Rooms A and B)  
815 New Bridge Street  
Jacksonville, NC 28541

September 13th 4:30-6:30 PM  
Beaufort Train Depot  
614 Broad Street  
Beaufort, NC 28516

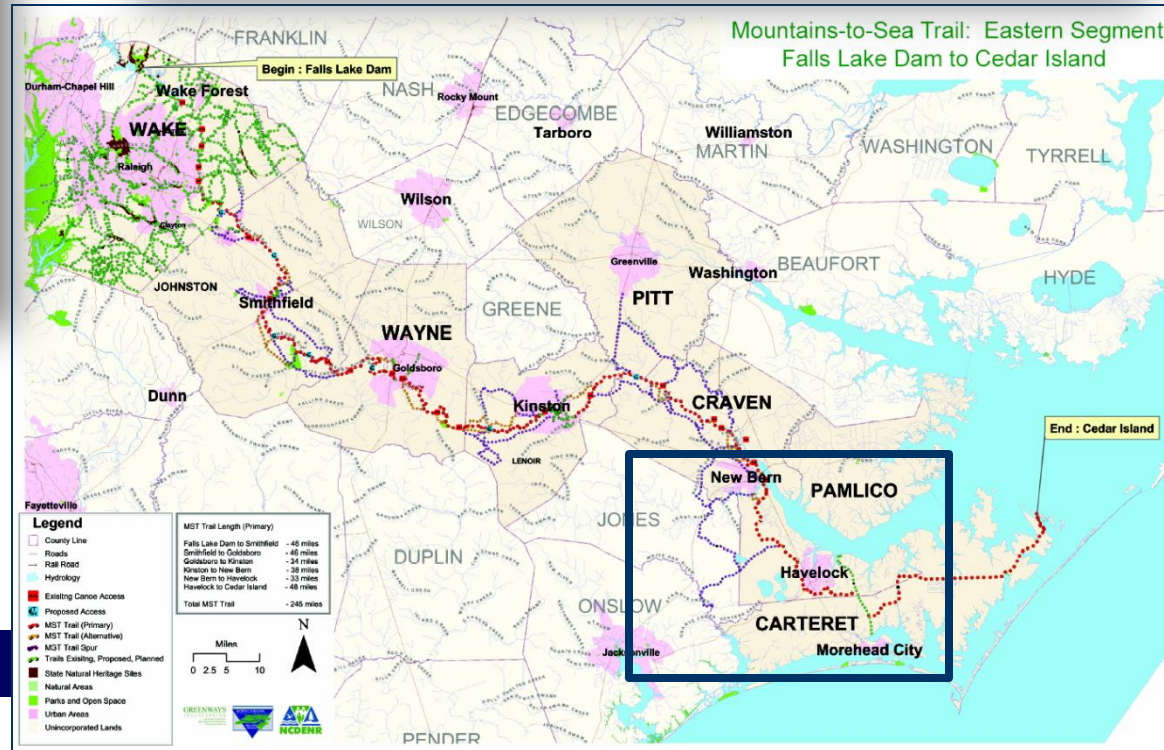
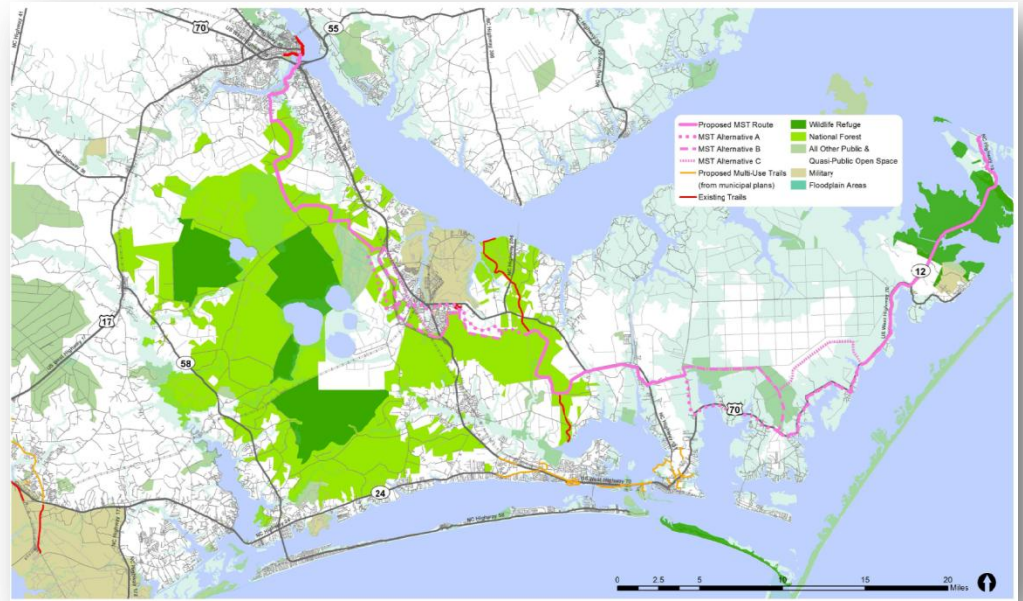
September 14th 5:00-7:30 PM  
New Bern Convention Center (Ballroom B)  
203 S Front Street  
New Bern, NC 28563

September 15th 5:00-7:30 PM  
Pamlico Community College (Delamar Center)  
5049 Highway 306 South  
Grantsboro, NC 28529



Find these events on Facebook under "Croatan Bike Trails Plan" and "Like" us to keep in touch with plan activities and progress.

Project contact: Alex Rickard, Planning Director,  
Eastern Carolina Council, 252.638.3185 ext. 3021, [arickard@eccog.org](mailto:arickard@eccog.org)







## Mountains-to-Sea Trail – Progress through Partnerships







completed early 2011

## Stone Mountain State Park Group Campground







completed early 2011

## Kerr Lake State Recreational Area Henderson Point Campground







Haw River State Park  
Youth Conference Building

## Major Maintenance Funds







## **2011 The Year of the Turtle; I&E Theme**

NC State Parks receives the Media Award - National Association of Interpretation





## NRPA Gold Medal Program & Other Awards







**Retirements:** Superintendents at Mount Mitchell, Carolina Beach, Stone Mountain, Singletary Lake





# *State Parks System - Future Needs*

Additional land and facilities are needed at most state parks.  
More than 40 potential park units have been identified by the  
*New Parks for a New Century* initiative.

The system is experiencing record growth and park visitation  
Important natural resources need protection





# Funding for State Parks

## Capital Funding:

**1916-1950:** Only \$1.6 million appropriated to state parks

**1993:** General Assembly approves **\$35 million bond** issue  
\$24.5 million for capital improvements  
\$10.5 million for land acquisition

**1994:** General Assembly approves a dedicated funding,  
the **Parks and Recreation Trust Fund**, using a portion  
of the real estate excise tax

**Since 1994:** Notable improvements in facilities and growth to meet  
demand and protect resources

**Operational Funding:** \$38.5 million annual budget, \$4.11 per capita  
NC ranks #45 nationally, only above VA in the Southeast





- ... to protect North Carolina's **natural diversity**;
- ... to provide and promote **outdoor recreation** opportunities throughout North Carolina; and
- ... to **exemplify and encourage good stewardship** of North Carolina's natural resources for all citizens and visitors.











