

NORTH CAROLINA
NATURAL
HERITAGE
— **TRUST FUND** —

Update for Environmental Review Commission

Lisa Riegel

Executive Director

(919) 707-8638

December 14, 2011

MISSION

protect natural & cultural heritage lands

- Recreation, scientific, education, cultural and aesthetic purposes
- Additions to state parks, trails, forests, wildlife areas
- Historic properties program
- Other beneficial use and enjoyment by the public



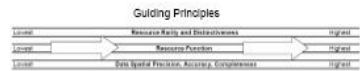
Natural Heritage Program

- ID most important natural areas in state
- 85 of 100 Counties complete; 6 ongoing
- Statewide Conservation Planning Tool (Map)

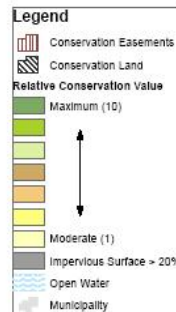


One NC *Naturally* Conservation Planning Tool

Draft



- Notes:
1. Raster based GIS analysis
 2. Relative conservation value assessment
 3. Map shows maximum score value only, not additive
 4. Relative values based on available data and professional judgement
 5. LHI guild data currently only available for the coastal plain
 6. Impervious surface greater than 20% is ranked as "0"



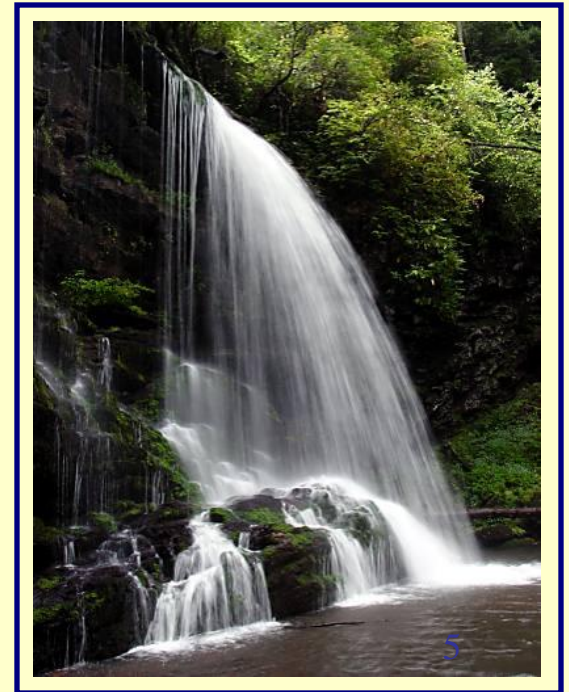
0 5 10 15
Miles



Biodiversity / Wildlife Habitat Assessment

Program Overview

- Established 1987
- 12 member citizen board
- Accepts applications from
4 state agencies: DENR,
DoACS, DCR, WRC
- Awards - twice a year



2012 Board of Trustees

Governor Appointees

Charles E. Clement

Watauga County

1995-2016

Stephen W. Woody

Buncombe County

2010-2016

R. Michael Leonard

Forsyth County

1994-2012

Elizabeth D. Taft, Ph.D.

Pitt County

2002-2012

Senate Appointees

**J. Robert Gordon,
Chairman**

Scotland County

2002-2014

Greer Cawood

Forsyth County

2012-2018

Sam P. Douglas

Wilson County

2008-2013

Lois McIver Winstead

Person County

2006-2018

House Appointees

Alan D. Briggs

Wake County

2000-2018

Alan S. Weakley, Ph.D.

Chatham County

2002-2014

Troy Kickler

Lee County

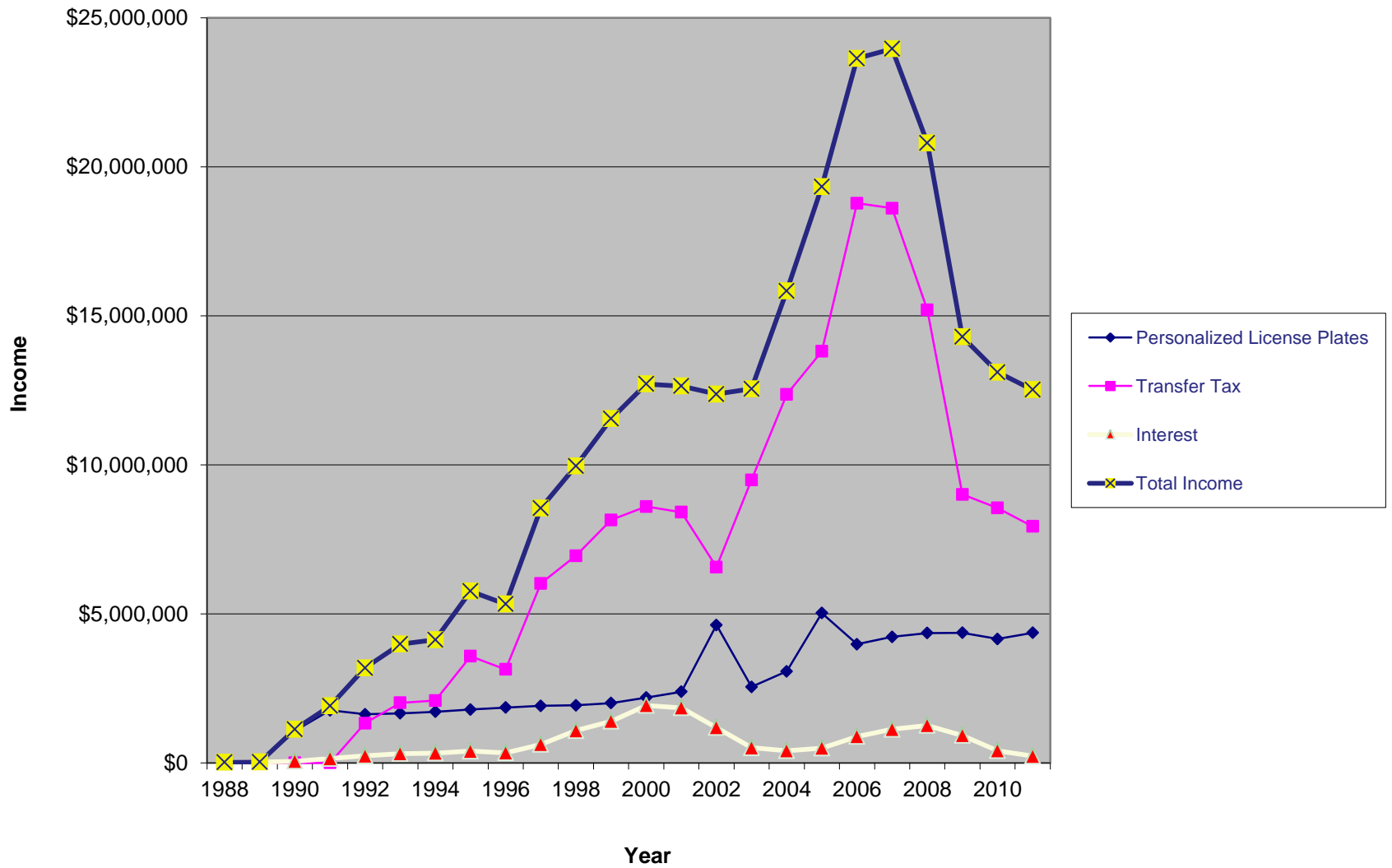
2012-2018

Elizabeth "Robin" Jacobs

Orange County

2010-2016

NHTF Income – by Fiscal Year



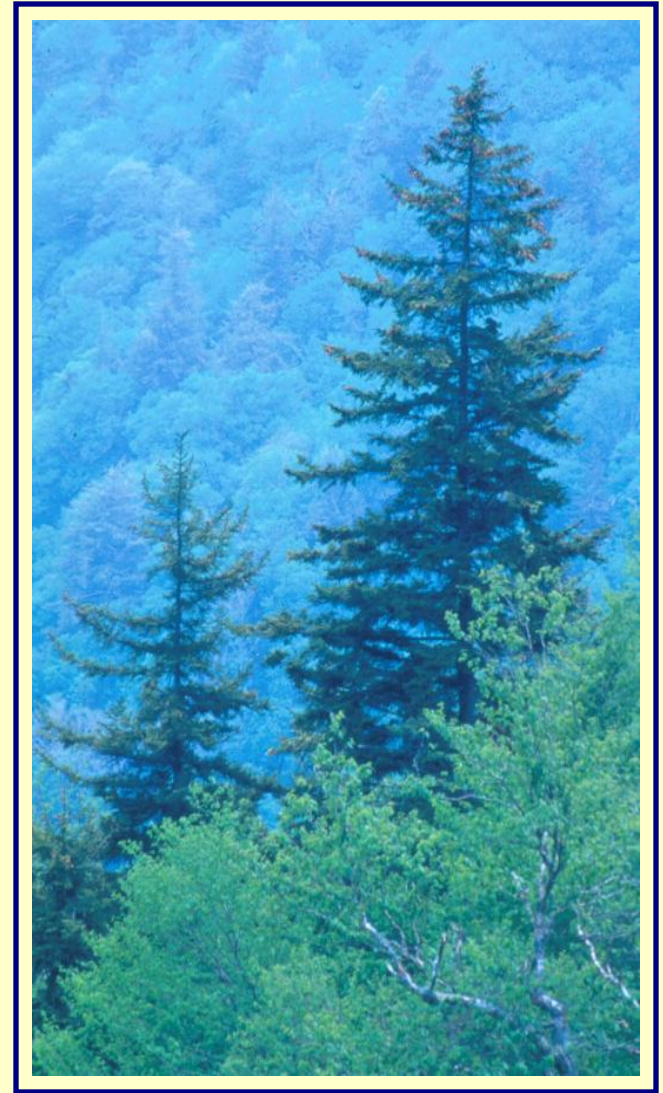
NHTF 2011 Fiscal Year Income

Real Estate Tax	\$ 7,933,140
License Plate Fee	\$ 4,363,349
<u>Interest</u>	<u>\$ 225,961</u>
Total	\$12,522,450

2011 Awards

- 19 Projects
- 3,353 Acres
- \$9,041,889

*Note: \$1,725,961 transferred to
General Fund*



2011-2012 Budget Impacts

\$12 million est. income

- \$8 million diversion to General Fund
 - \$0.8 Fund Shift Positions (9.5 FTE)
 - \$4.4 COPS repayment
- = \$ 1.2 million deficit



Moving Forward

- Maximize federal matching monies and leverage private donations
- Take advantage of bargain sales
- Potential Economic Impact Key (e.g., military buffers, tourism)
- Prioritization and coordination with other Trust Funds
- Slow down, don't stop



2011 Projects – Highlights

- WRC
 - Sleepy Creek
 - King Tract, Uwharries
- DCR
 - Bentonville
 - OMVT
- PCP
 - Corbett/Boiling Spring Lakes
 - DuPont State Forest
- DENR
 - Arnette Tract, Zoo
 - Yellow Mountain

Corbett Tract – Addition to Boiling Spring Lakes Plant Preserve

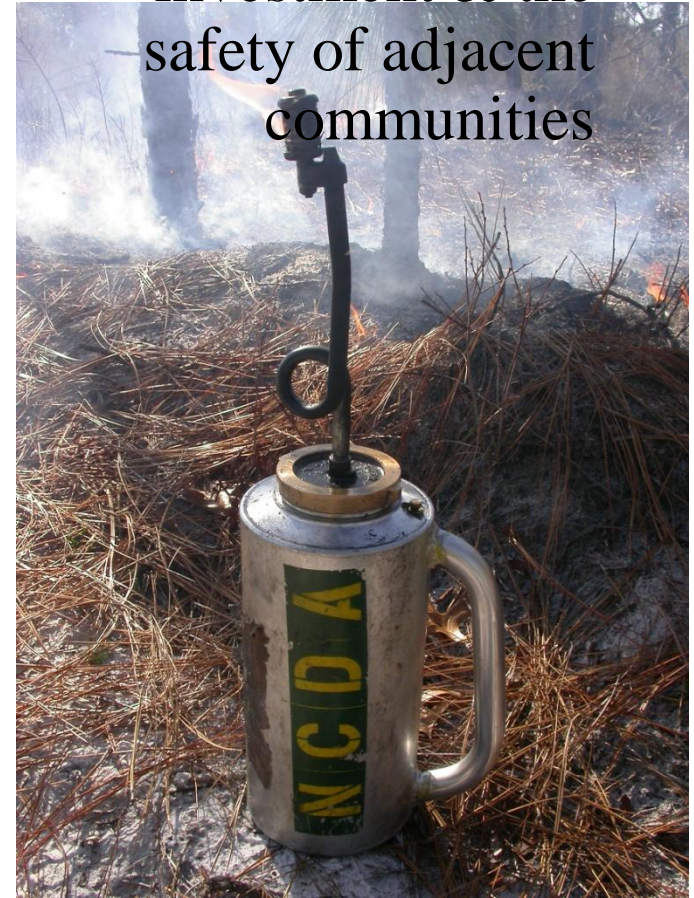
Nationally Significant site that is home to one of the best remaining Venus Flytrap populations. Protects extensive wetlands, many rare plants, as well as unusual vegetation types



Fire-adapted vegetation & rare plants the
essence of what the Preserve is
intended to “protect”

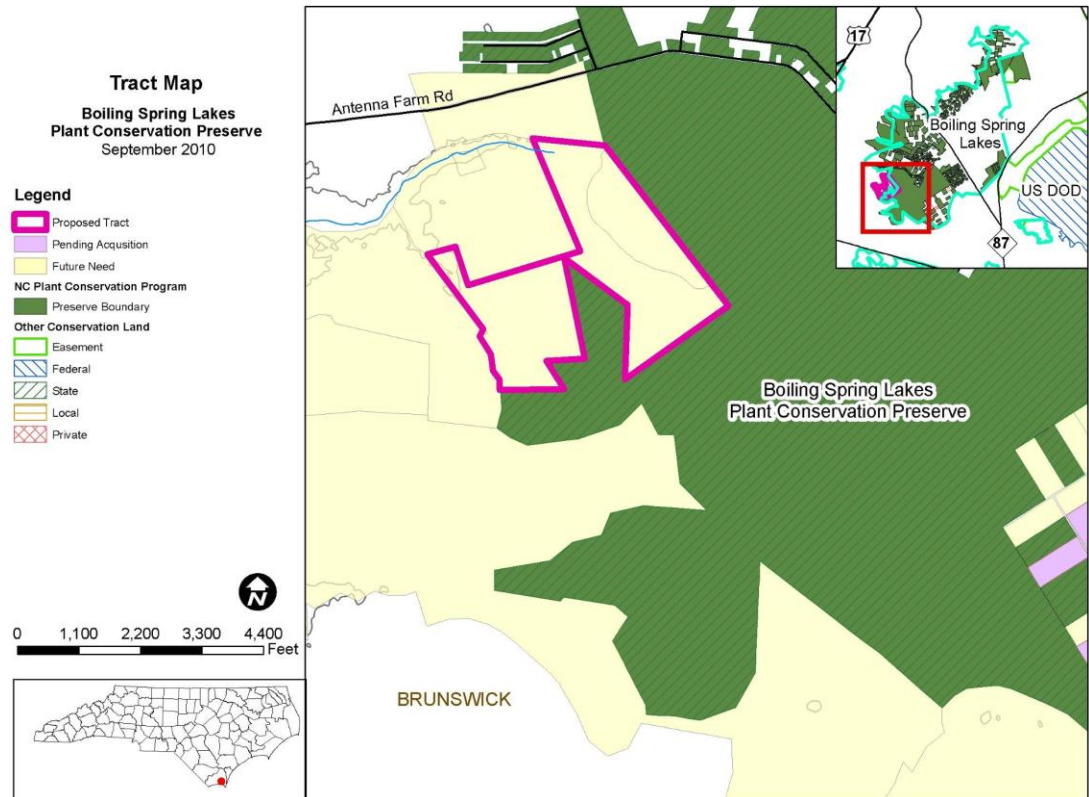


Fire management
protects the
conservation
investment & the
safety of adjacent
communities



Consolidated ownership facilitates effective & efficient management

On this map the green is current Preserve ownership; Corbett is outlined in pink – note how this acquisition minimizes part of the awkward boundary



Corbett Tract Summary

COST/ACRE: \$1,510/acre

ACREAGE: +/- 270 acres

Funding Breakdown

NHTF	\$243,464.00
------	--------------

Private	\$114,000.00
---------	--------------

Federal	\$142,900.00
---------	--------------

<u>TOTAL COST:</u>	\$500,364.00
--------------------	--------------



Rough Leaved Loosestrife

One of several endangered plants found on
the tract

Partnership with Military

- NHTF \$1,069,907
- US Navy \$1,012,381
- 1615 acres



WRC:

- very high quality conservation area attached to the 65,000 acre Holly Shelter Game Land.
- Improve management - even up part of its southern boundary and prescribed burning, easier and less expensive.
- tract harbors Red-Cockaded Woodpeckers a federally listed endangered species.

USMC:

- Acquiring active RCW sites off base allows more flexibility with colonies on their base
- Buffer Camp Lejeune from residential development

SLEEPY CREEK – Holly Shelter

Map 1: Location Map

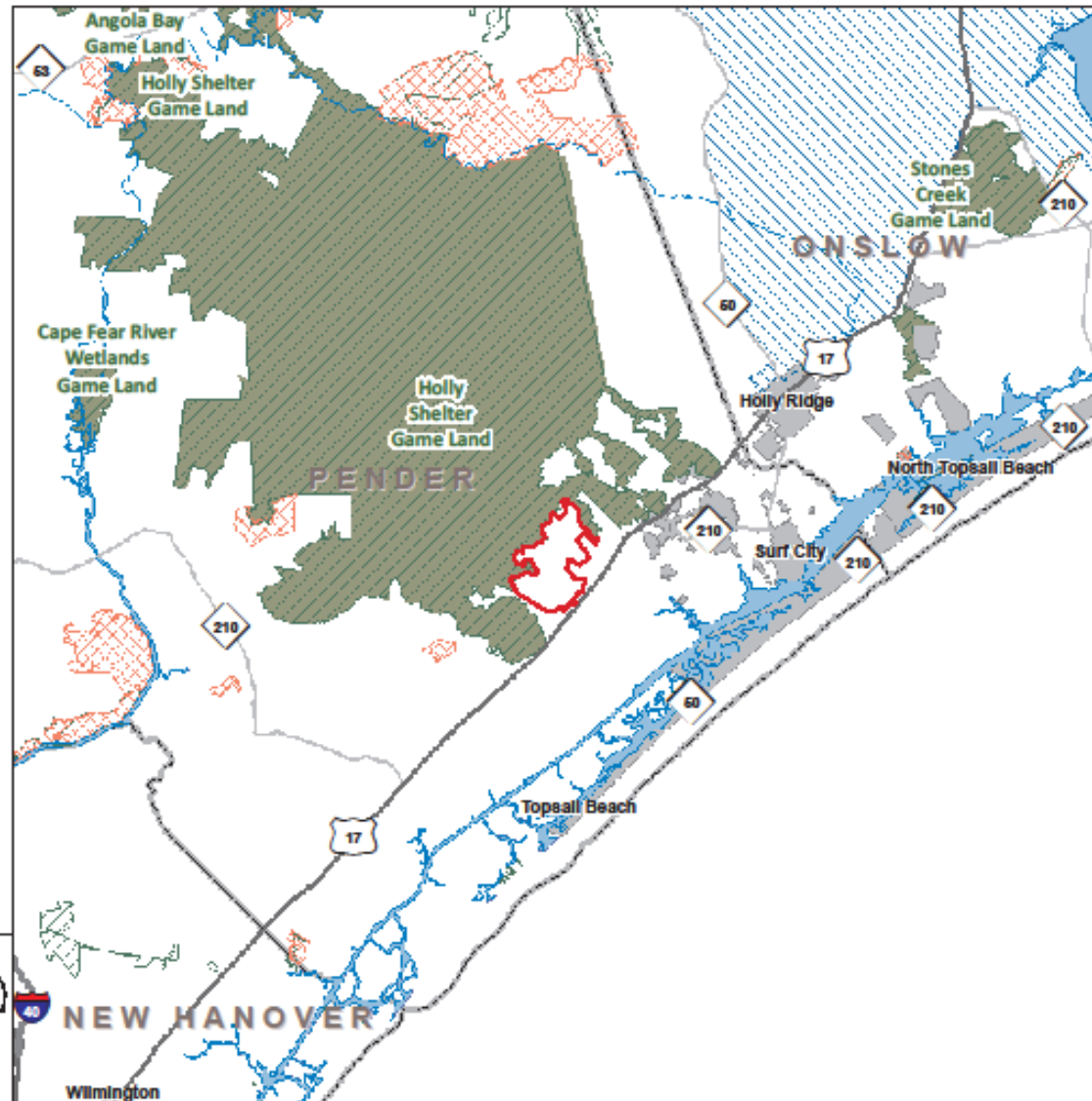
Sleepy Creek Property
March 2010

Legend

- Sleepy Creek
- Interstates
- US Highways
- NC Roads
- Other Conservation Land**
 - Federal
 - State
 - Local
 - Private
- Game Land Boundaries
- County Boundary



0 1.5 3 4.5 6 Miles



SLEEPY CREEK ADDITION:

Contributes to conservation of terrestrial wildlife, including deer, wild turkey, mourning dove, bobcat, red and gray fox, black bear, cottontail rabbit and raccoon.



Pixie

Moss



Dwarf

Iris



Turkey Track

Arnett Branch Longleaf Pine Forest



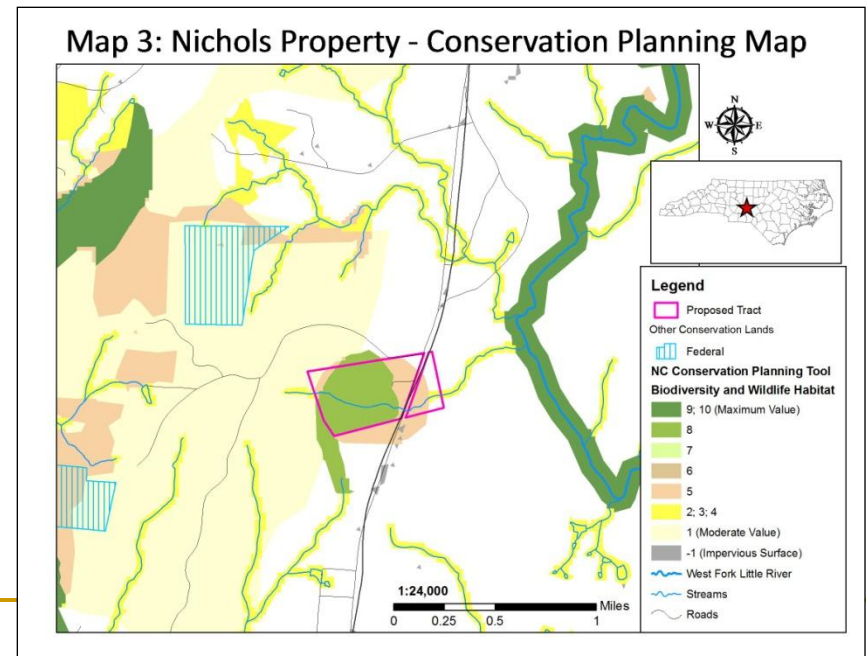
**Preserving a Rare Tract of Old Growth Piedmont Longleaf Pine
in Montgomery County, North Carolina**

Arnett Branch Longleaf Pine Forest

The Zoo is committed to the conservation of the world's wildlife and wild places, including some special places in North Carolina. This is one of them.

With this project the NC Zoo and its partner, the LandTrust for Central North Carolina, will:

- Protect a Natural Heritage Area of Regional significance, a 117-acre tract of old Piedmont longleaf pine forest, with trees up to 200+ years old
- Protect headwater streams, to help maintain high water quality and flow in the West Fork of Little River, Nationally Significant Aquatic Habitat and home to several rare and endangered mussels
- Provide breeding habitat for forest interior bird species and neotropical migrants
- Provide a seed source for Piedmont ecotype longleaf pine for ongoing restoration
- Expand Zoo's environmental education programs
- Create trails with potential links to the Uwharrie Trail

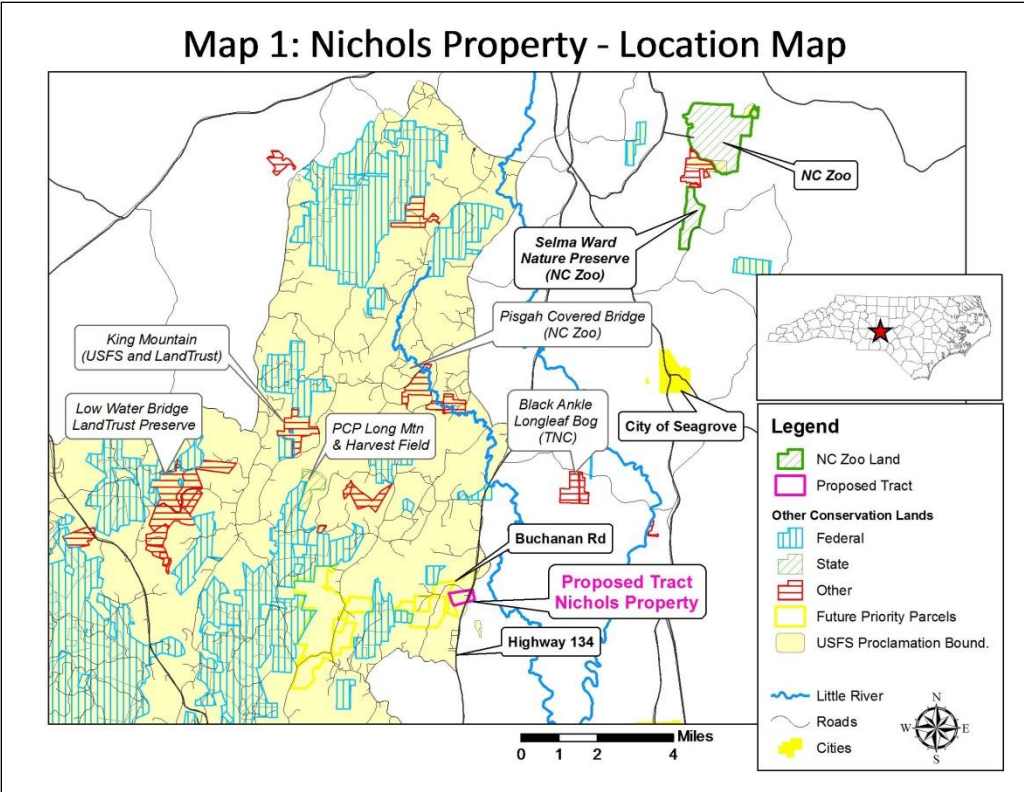


Protection of Arnett Branch Longleaf Pine Forest Preserves Habitat for Priority Animal Species



Kentucky Warbler
(USFWS photo)

This forest provides breeding habitat for several priority species for conservation, including neotropical migrant and forest interior bird species like Kentucky warbler and ovenbird, and reptiles such as the timber rattlesnake. It also helps expand conserved lands in the area.

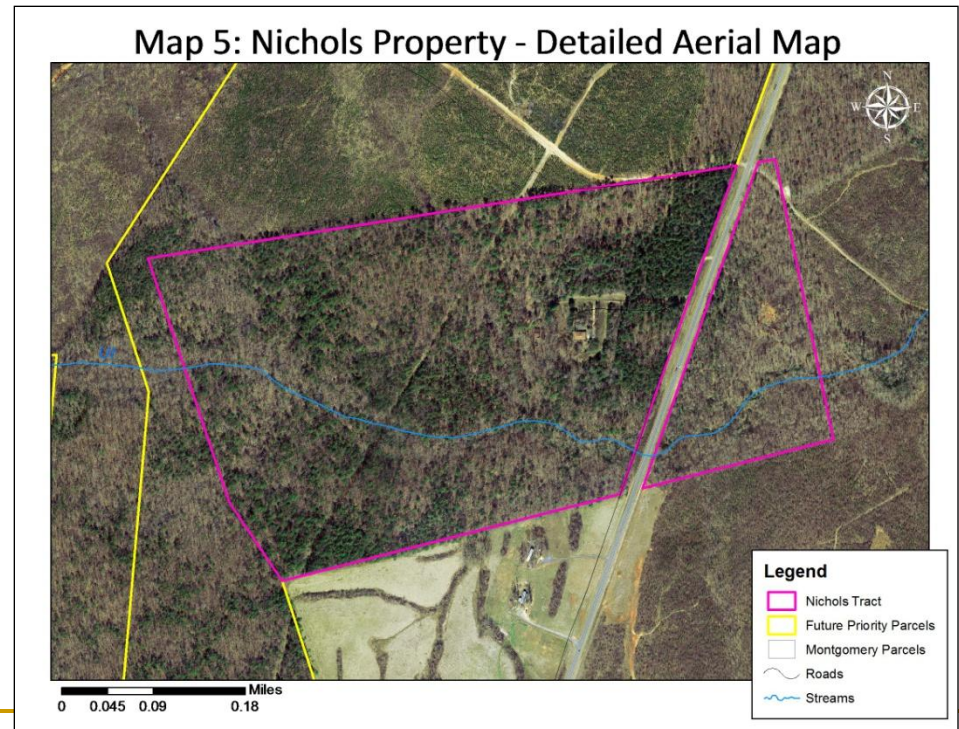


Arnett Branch Longleaf Pine Forest

Funding for Phase I:

- Private donor \$50,000
- Land Trust for Central NC -
\$11,800
- NC Zoo - \$2,000
- NHTF - \$282,325
- Funds Needed
\$123,875 (phase II)
- Total project cost:

\$470,000



DUPONT STATE FOREST

Stone Mountain Addition Makes Conservation \$ense

1. Public Access & Wildlife Habitat
2. Owner selling to State for 45% below appraised fair market value.
3. Private Conservation Donor agreed to contribute 50% of the final purchase price— net savings to the State of over 70% of appraised fair market value.



Blue Ridge Two-lined Salamander



Crayfish

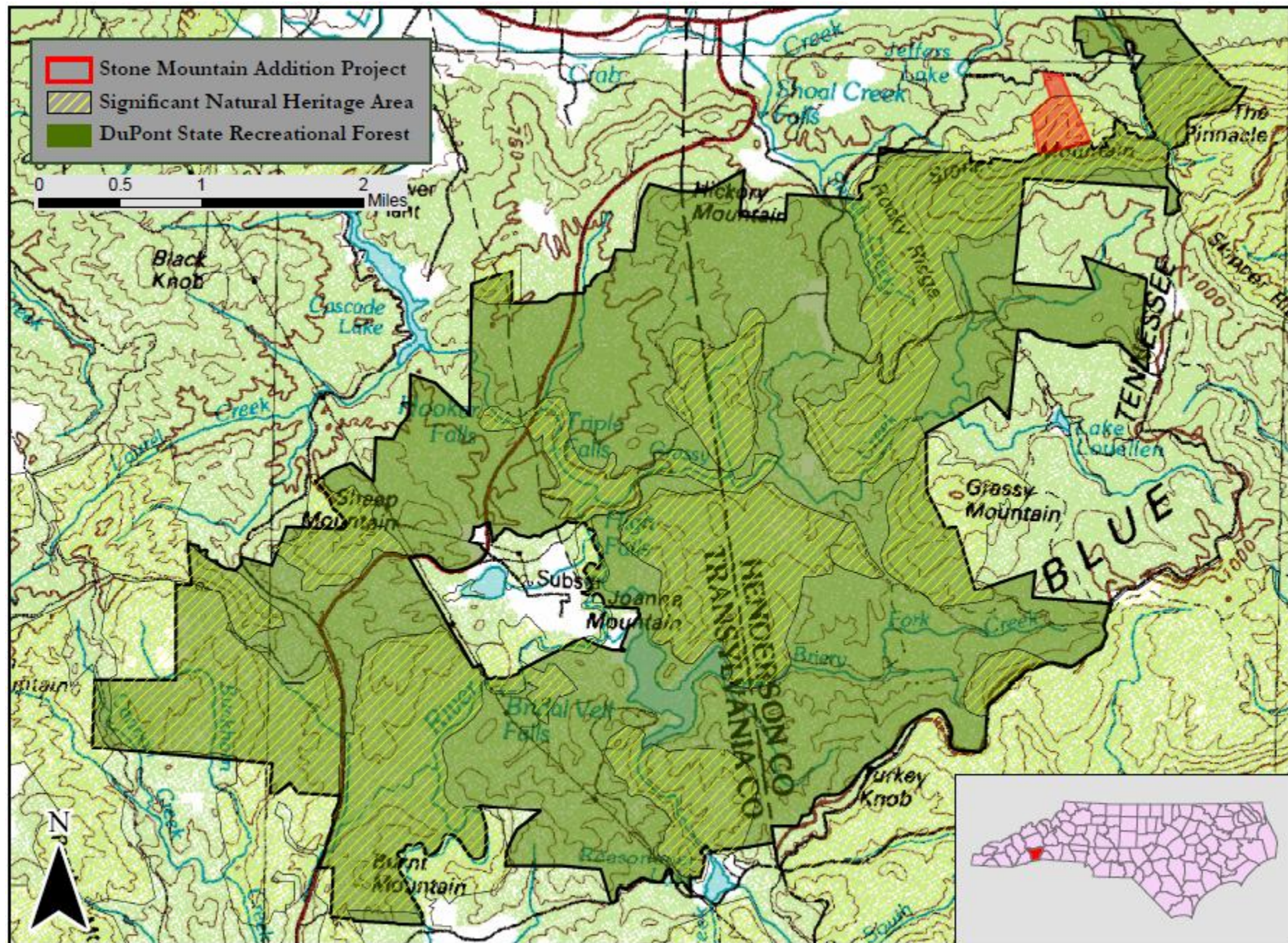


Plentiful Game

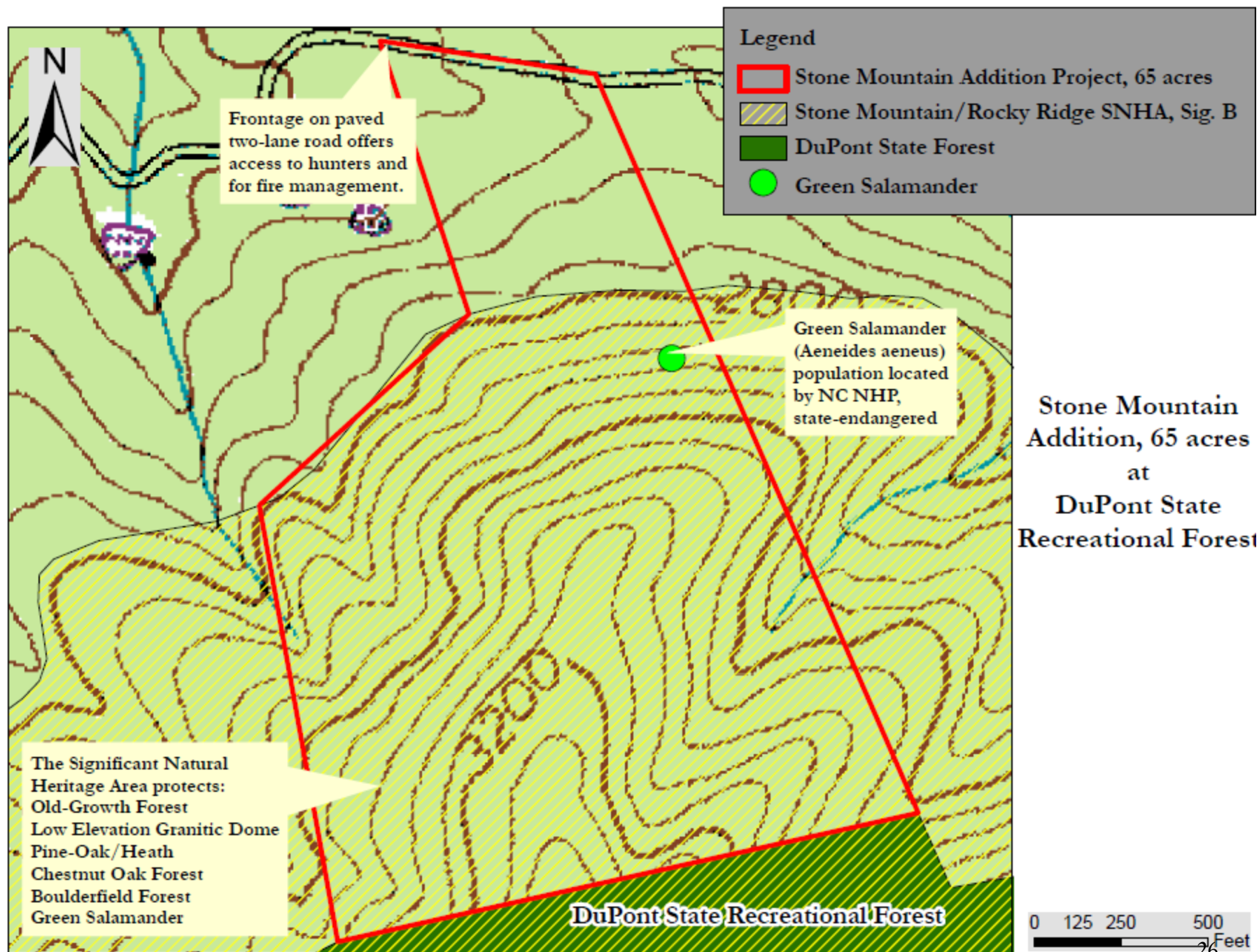


State Endangered
Green Salamander

View from granitic outcrop at top of property, adjacent to DuPont State Rec. Forest



Stone Mountain Addition, DuPont State Recreational Forest,
Henderson County, 65 acres



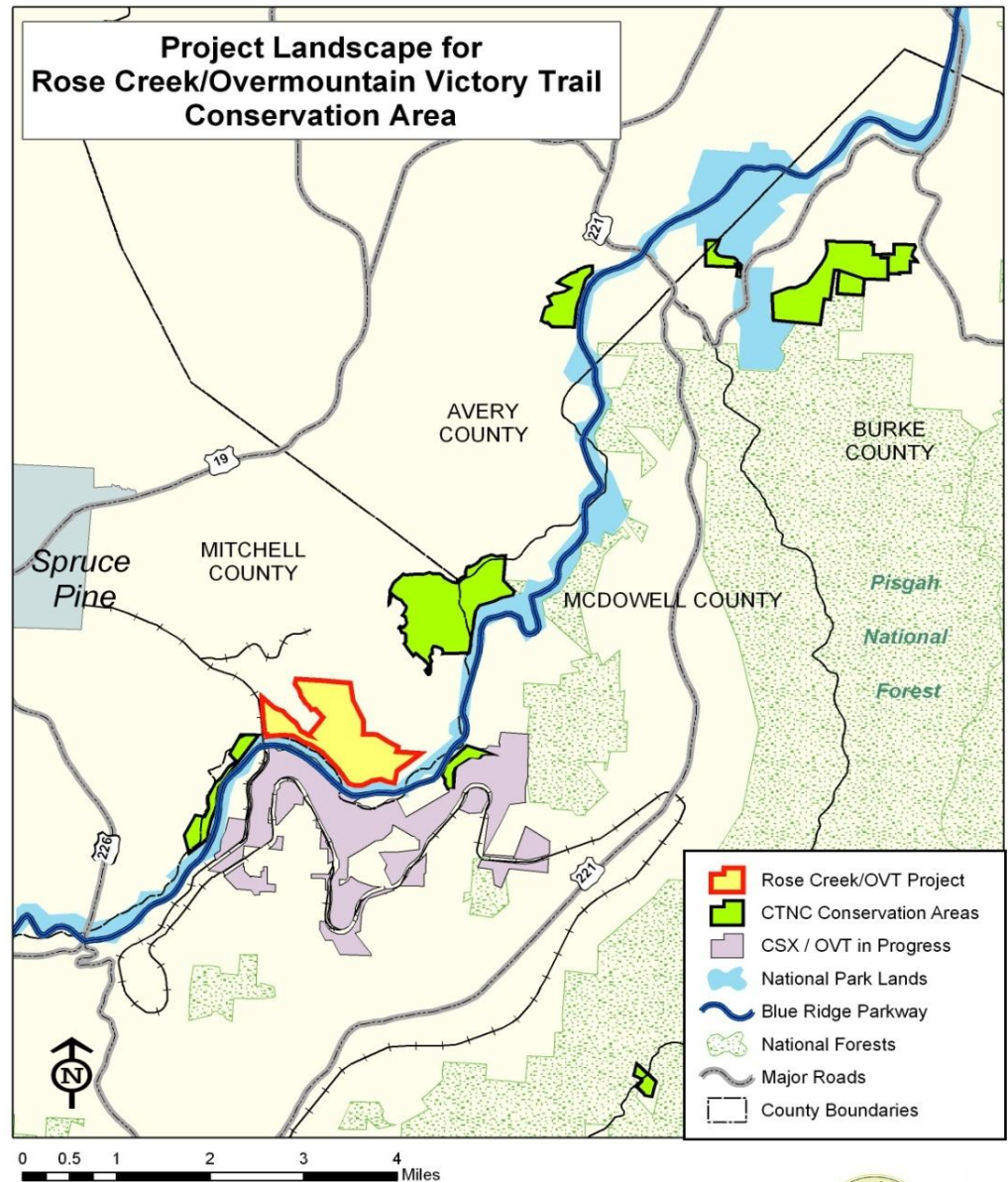
Stone Mountain
Addition, 65 acres
at
DuPont State
Recreational Forest

Overmountain National Historic Victory Trail



Rose Creek

- Protecting Blue Ridge Parkway viewshed
- Access to OMVT (trail)
- Protect wildlife & natural areas
- 535 ac /\$720K



Rose Creek

535 Acres along Blue Ridge Parkway

1.33 miles OMT

Riparian Buffers/Abundant
Wildlife



**ROSE CREEK – 535 acres along Blue Ridge Parkway
1.33 miles of OMVT**



Moving Forward

- Maximize federal matching monies
- Potential Economic Impact Key
- Prioritization and coordination with other Trust Funds
- Slow down, don't stop
- Use private donations to help buy time
- Consider Role in Climate Change Adaptation





Additional Information

Lisa.riegel@ncdenr.gov

(919) 707-8638