

Solid Waste and Materials Management Annual Report



MICHAEL E. SCOTT, SOLID WASTE SECTION CHIEF
DIVISION OF WASTE MANAGEMENT





Solid Waste Section

Regulates safe management of solid waste through technical assistance, regulations, permitting, environmental monitoring, compliance evaluation and enforcement.

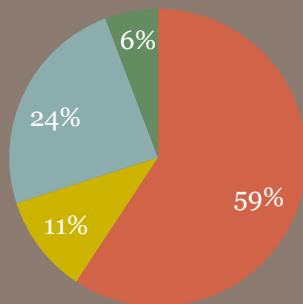
Waste types handled:

- **municipal solid waste**
- **industrial waste**
- **construction and demolition waste**
- **land-clearing waste**
- **scrap tires**
- **medical waste**
- **compost**
- **septage**
- **electronics**



Disposal Facts

Waste Disposal in N.C.



- Municipal Solid Waste Landfill
- Construction & Demolition Landfill
- Industrial Landfill
- Land Clearing and Inert Debris Landfill

- North Carolina communities disposed of 9,467,045 tons of waste
- Increase of 71,588 tons from the previous fiscal year
- State capacity equals 29 years of waste disposal (if the municipal solid waste disposal rate remains at 7.6 million tons per year)



Municipal Solid Waste

40 municipal landfills

1 municipal incinerator

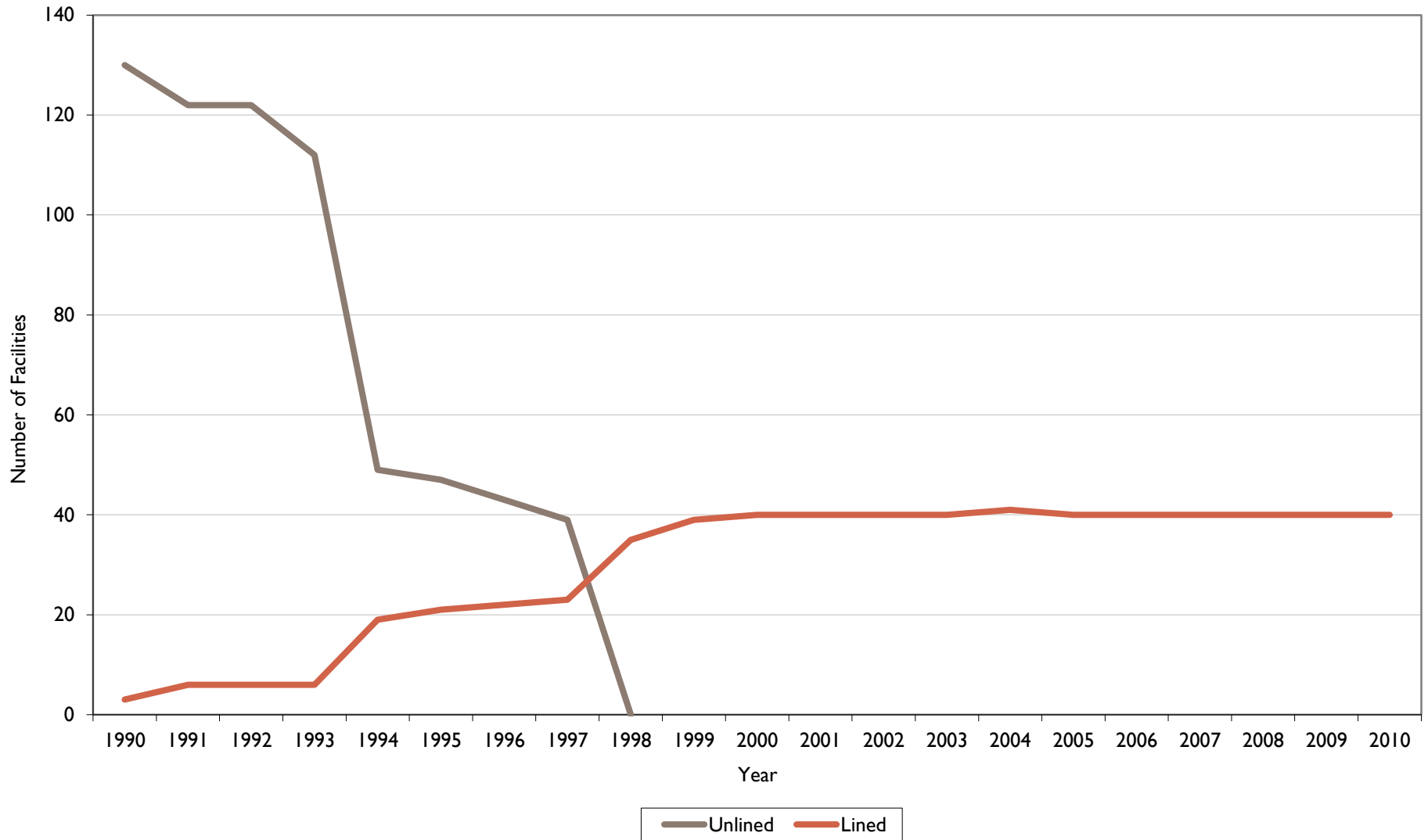
Subtitle D requirements

Disposal rates

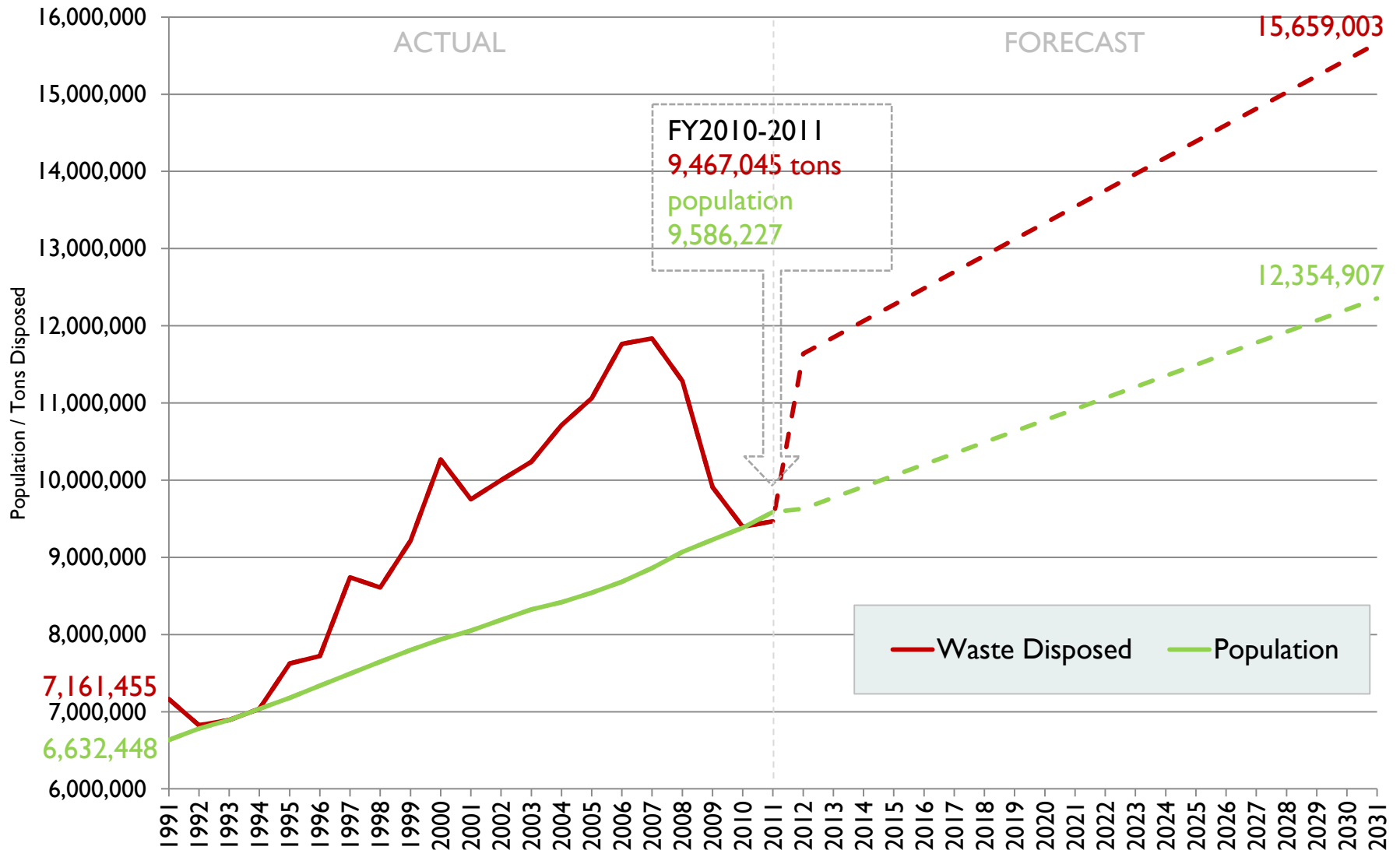


Landfill liner installation

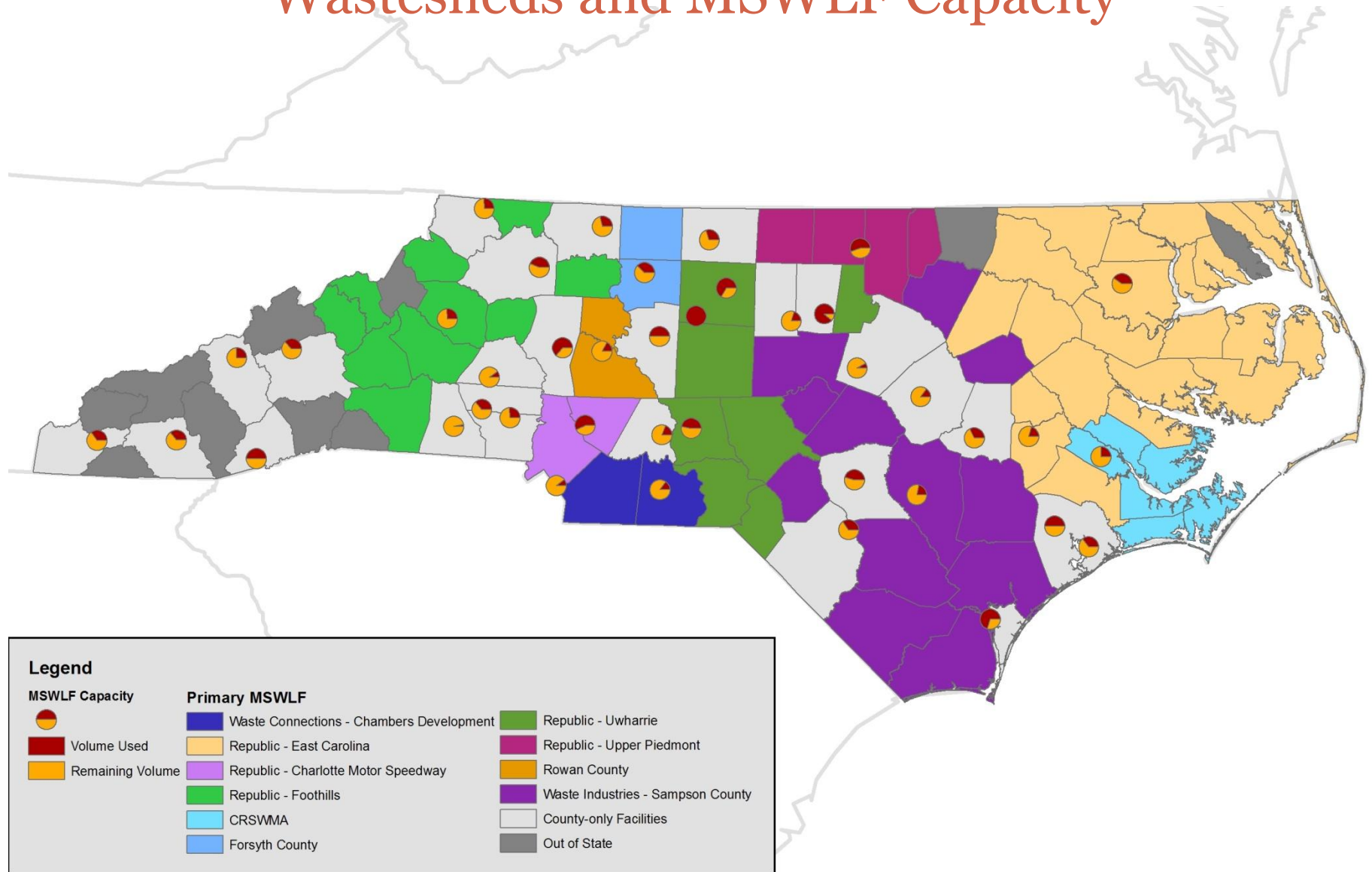
Number of Open Municipal Solid Waste Landfills in N.C.



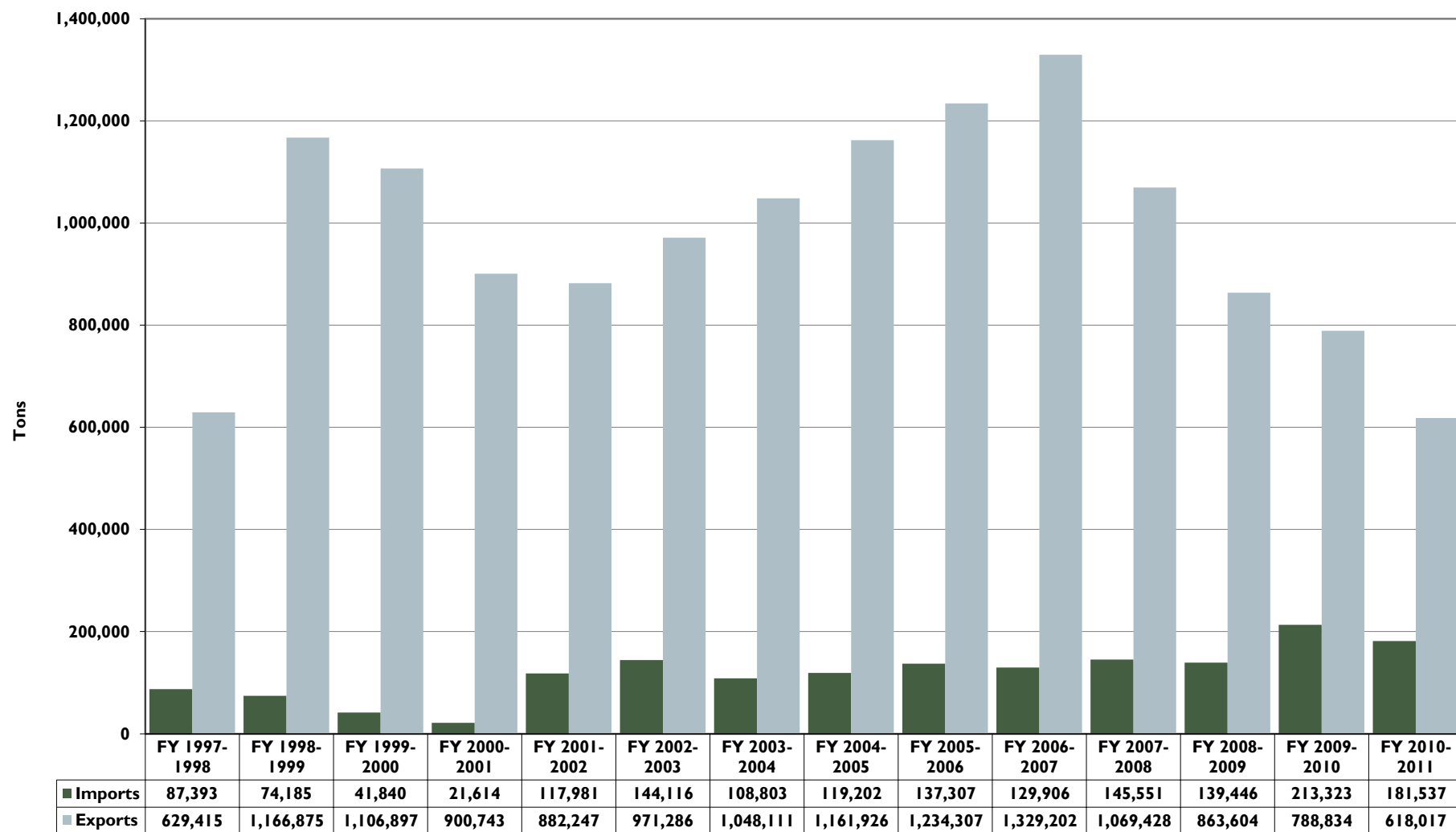
North Carolina Solid Waste Disposal 20-Year Forecast



Wastesheds and MSWLF Capacity



Import and Export of Solid Waste (tons)





Composting

Growing sector in Solid Waste

40 Solid Waste compost facilities

Food waste, agricultural byproducts, and sludges are managed

64,000 tons of food waste and food residuals composted in FY 2010-2011



Large Type III Compost Facility in Goldston, NC



Septage

Solid waste that is a fluid mixture of untreated and partially treated sewage solids of human or domestic origin.

Septic tank waste

Grease traps

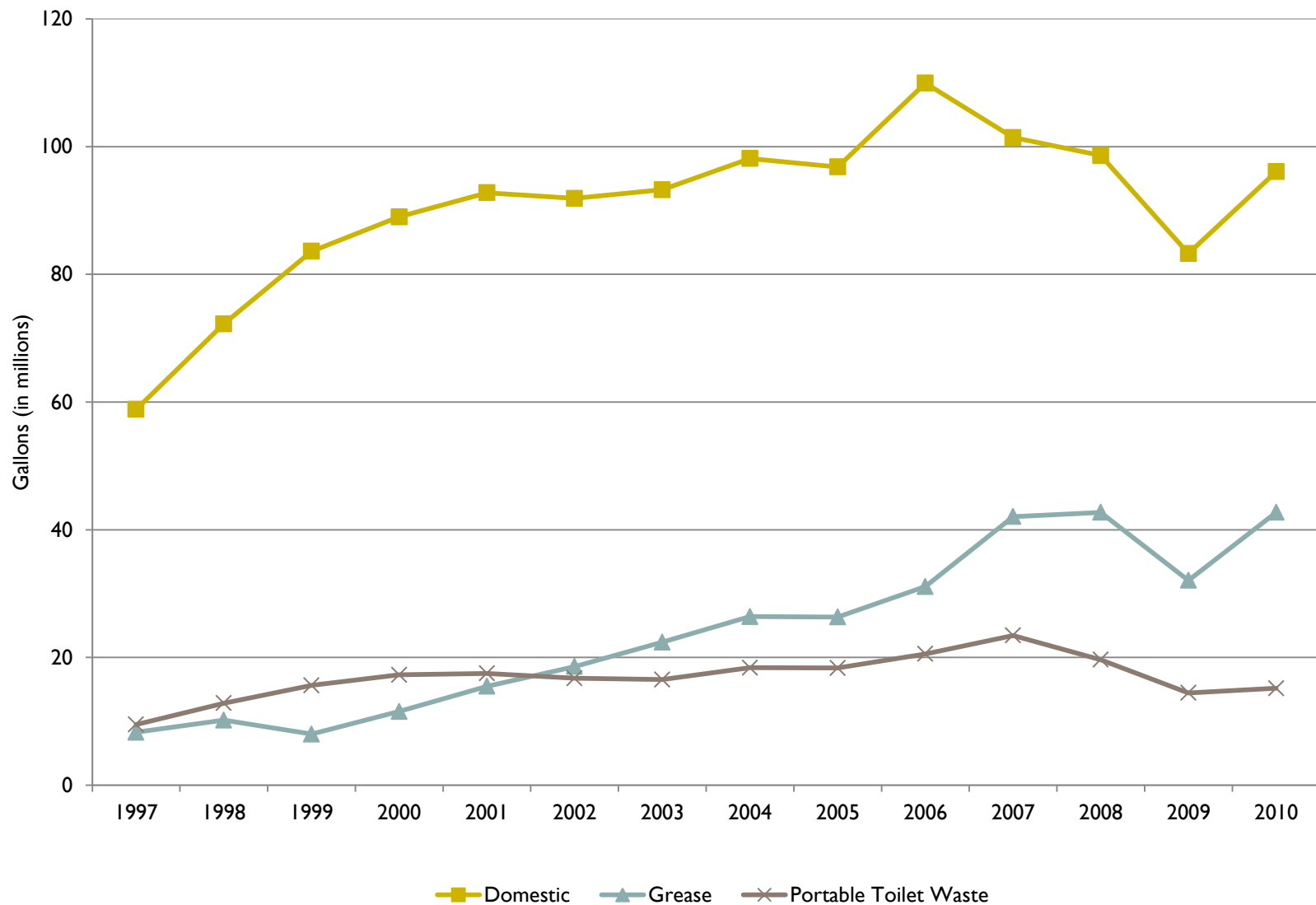
Portable toilets

505 septage firms



Septage dewatering facility in Craven Co

Septage Pumped Per Year





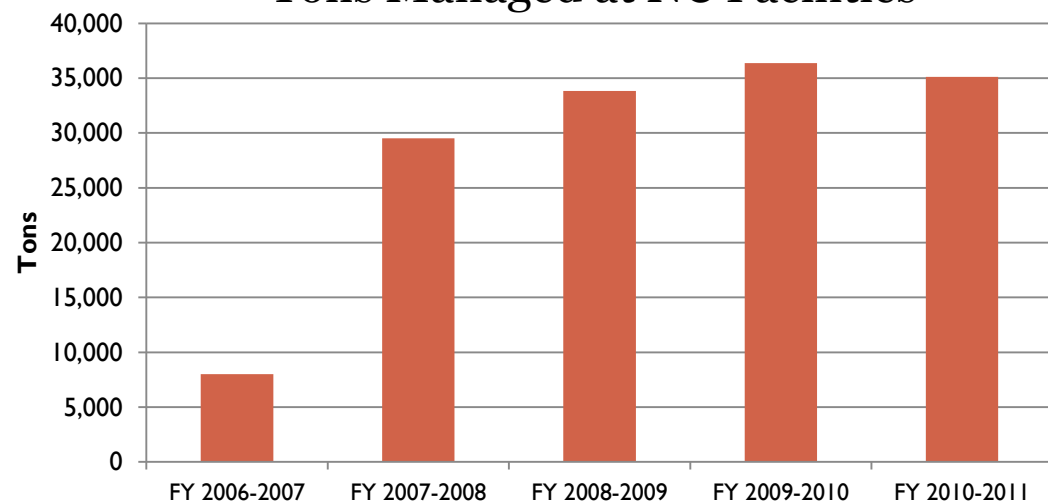
Medical Waste

Waste primarily managed in incinerators and autoclaves

Treated waste may then be disposed of in landfills



Tons Managed at NC Facilities





Electronics

Session law 2010-67

63% increase in
electronics tonnage
from FY2009-10



Overall Recycling of Electronics (tons)	FY11
Manufacturer Televisions (non-local government collections)	1,754.23
Manufacturer Computer Equipment (non-local government collections)	2,895.82
Local Government Televisions	3,019.39
Local Government Other Electronics	4,432.15
TOTAL	12,101.59
Total Pounds Per Capita	2.5



Scrap Tires

122,206 tons, managed by counties and shipped to two NC processing firms

1,508 tons, managed by counties and shipped to out-of-state processors

28,292 tons, tires taken directly to processing firms (privately-funded cleanups or tire dealers not participating in a county program)

152,006 tons = Total tires from citizens of North Carolina





White Goods

Refrigerators, ranges, stoves, etc.

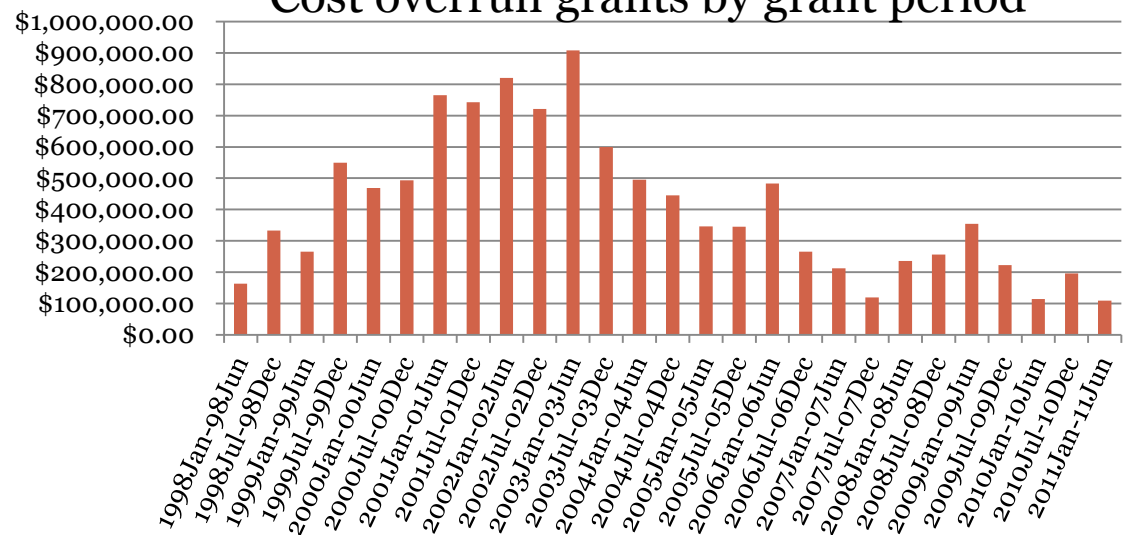
Can be difficult to dispose of

Can contain chlorofluorocarbon refrigerants

Some NC counties will continue to need support for their programs



Cost overrun grants by grant period





Disaster Response

2011 tornadoes and Hurricane Irene

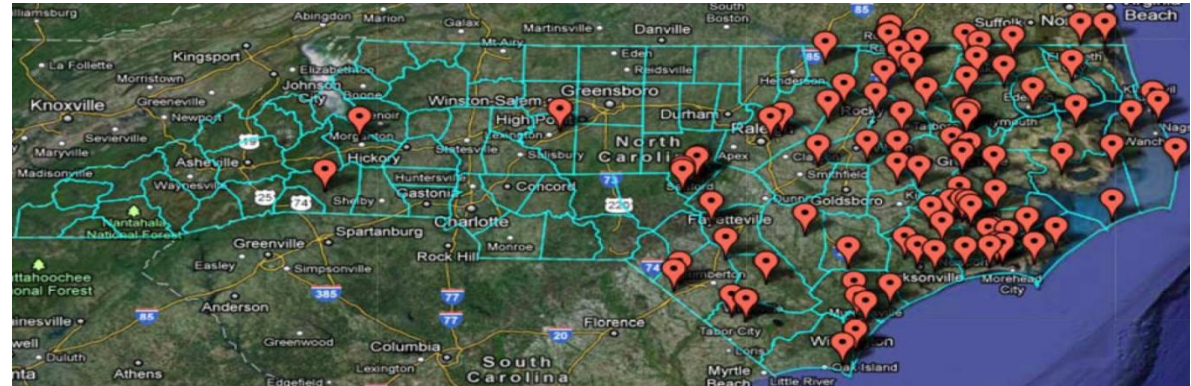
Staff on call 24/7

Primarily managing disaster debris

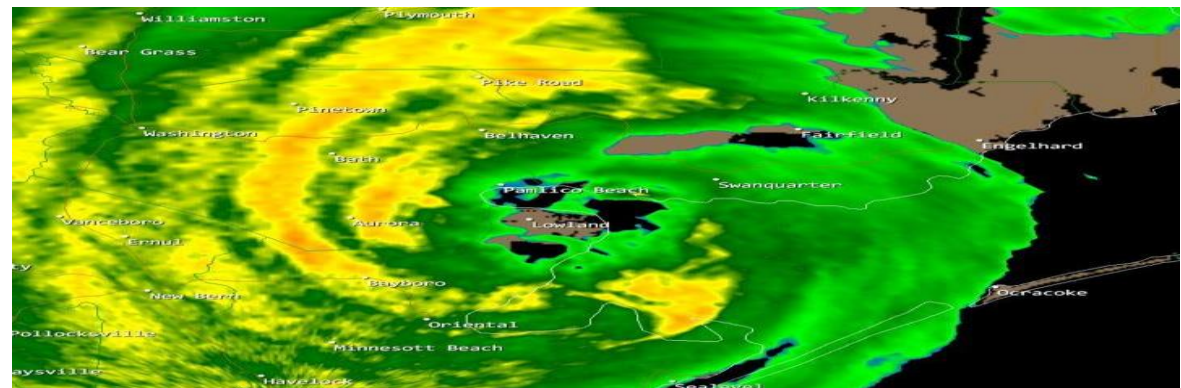
346 sites in NC

74 new sites in 2011

Disaster debris sites



Solid Waste interactive map available on website



Hurricane Irene

More information available on web at:
<http://portal.ncdenr.org/web/wm/sw>

Or contact:
Michael E. Scott,
Section Chief
Division of Waste Management – Solid Waste Section
1646 Mail Service Center
Raleigh, NC 27699-1646
Phone: (919) 707-8246
Email: michael.scott@ncdenr.gov

