

Agricultural Water Use

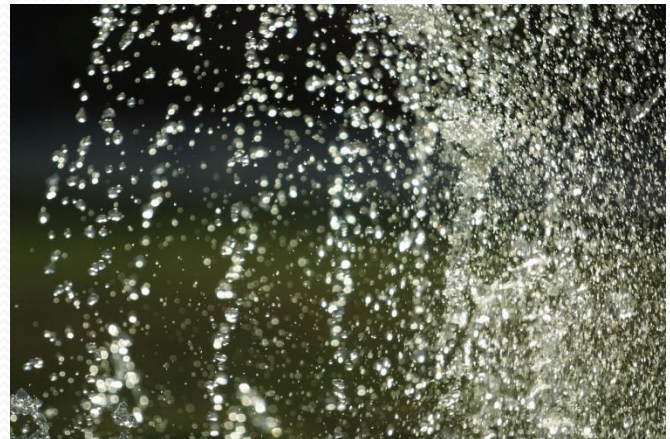
2011

- Drought in 2007-08 raises awareness of water supplies in North Carolina
- Legislation is discussed to better manage the state's water resources
- Information for agricultural water use is available for the CCPCUA (15 counties) but not statewide (except over 1 mil GPD)
- SL2008-0143 is passed in 2008 – Section 2 outlines collection of agricultural water use data



Legislation Requirements

- Annually collect water use data from operations using 10,000 GPD or more
- Collaborate with DENR in design of form
- Publish results by July 1
- Voluntary and Confidential



Survey Promotion

- Statewide WebCast September 2008
 - Commissioner Troxler, NCDA
 - Larry Wooten, President, NC Farm Bureau
 - All Commodity & Ag Organizations invited
- Commodity meetings
- County meetings
- Extension Offices



Survey Results - 2011

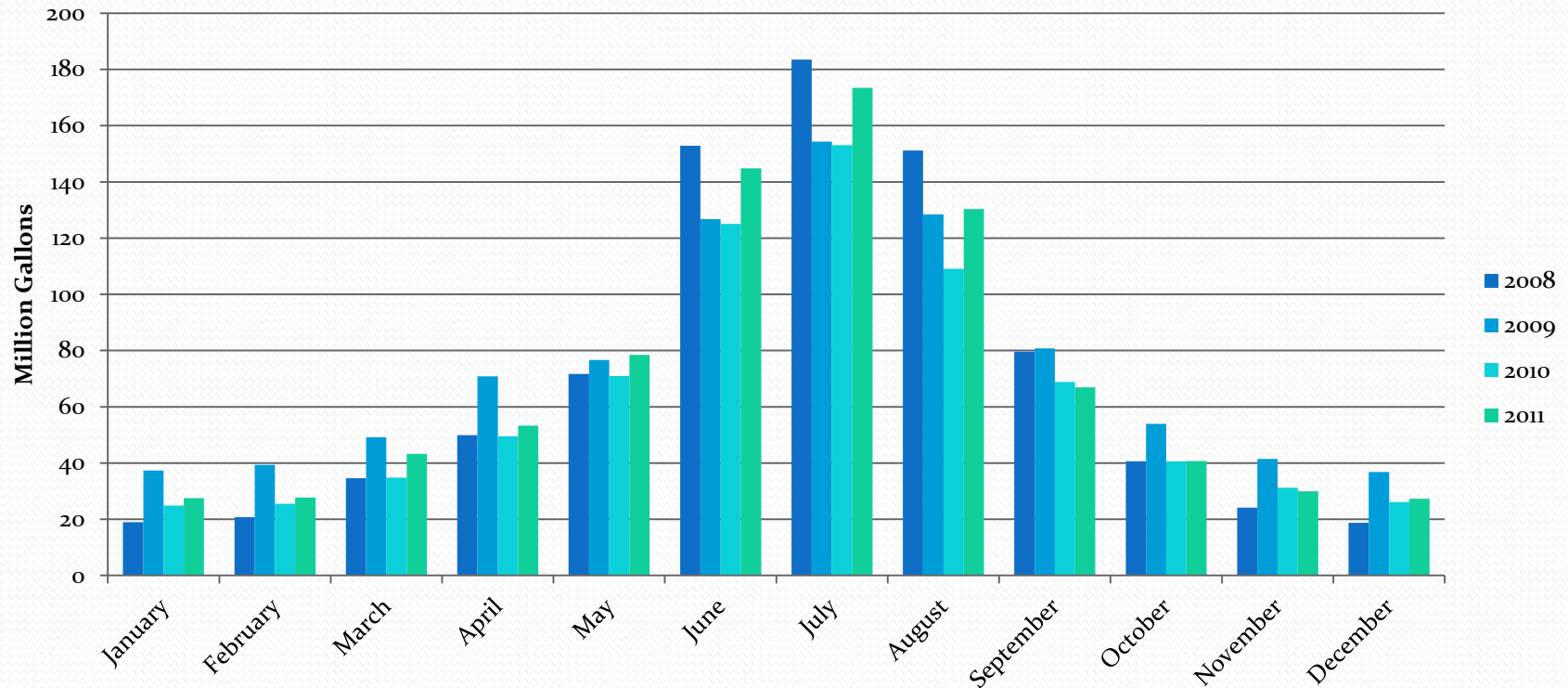


Highlights

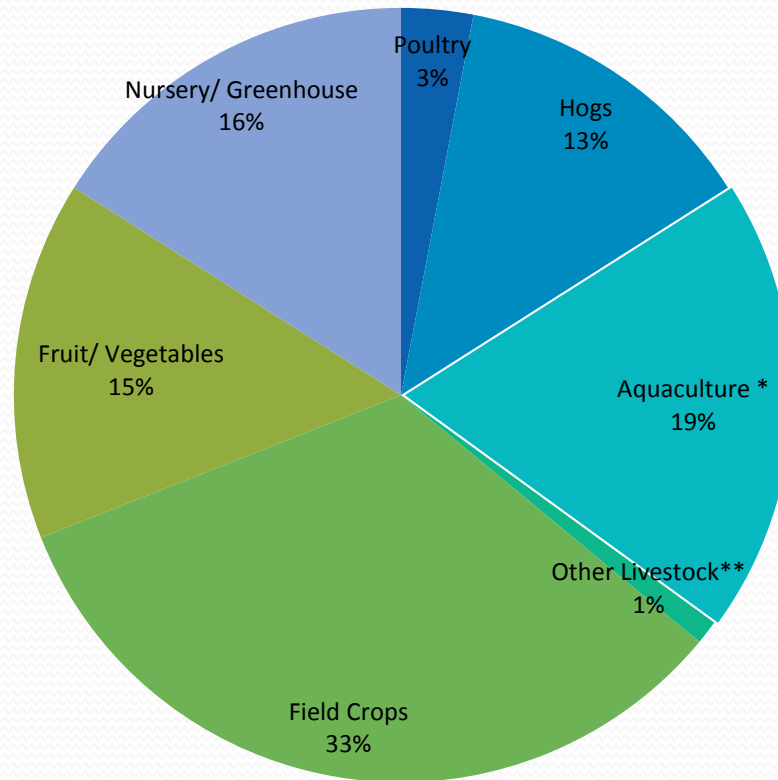
- 89% Response Rate
- # of Operations using 10,000 +
 - 2011 - 1308
 - 2010 - 1420
 - 2009 - 1372
 - 2008 - 1498
- Average Daily Use
 - 2011 - 70.3 million gallons
 - 2010 - 63.3 million gallons
 - 2009 - 74.6 million gallons
 - 2008 - 70.5 million gallons

Historical Comparison by month

Average Across All Days
Ground & Surface Water Withdrawals
2008 - 2011

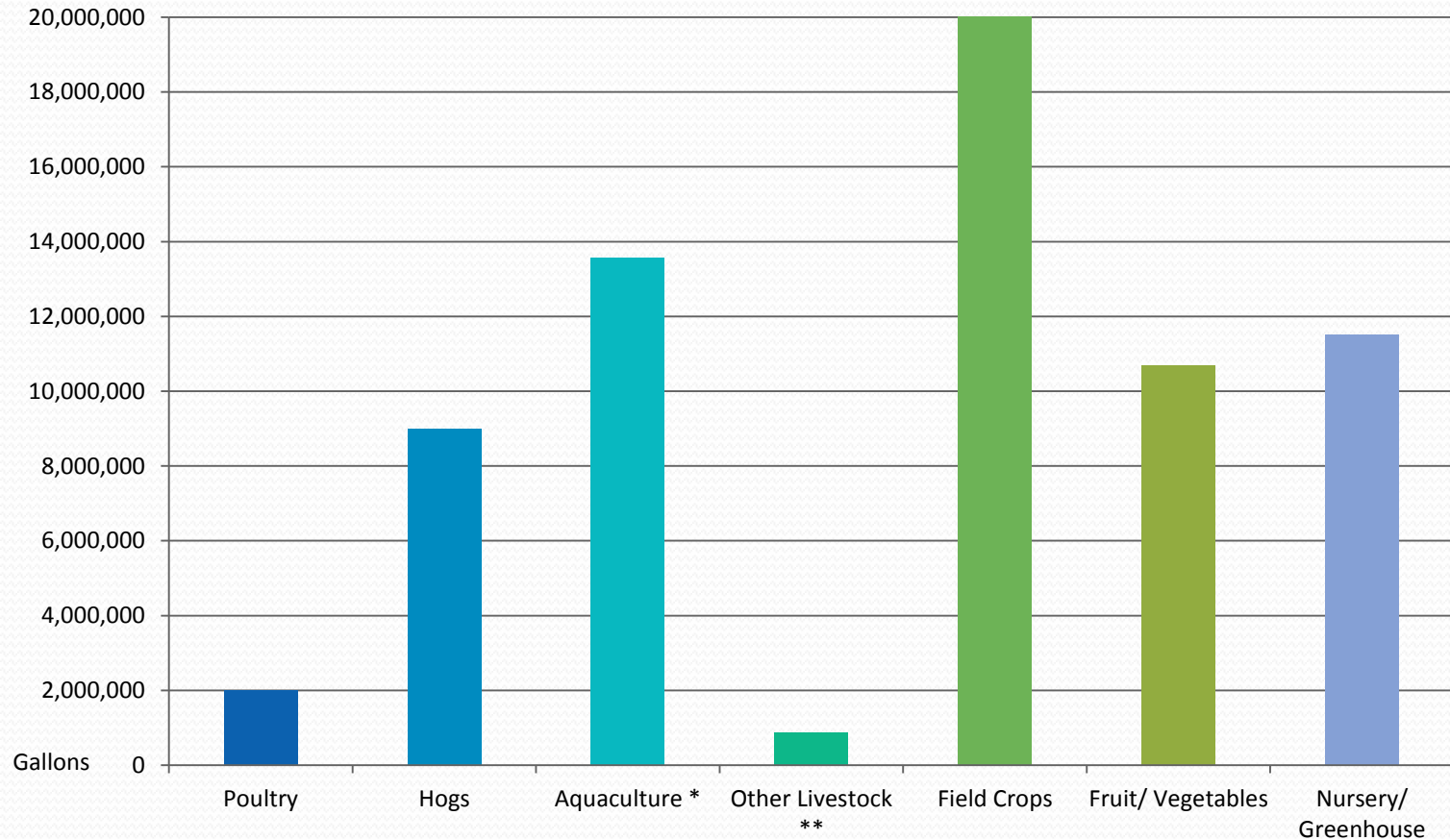


Annual Water Withdrawals by Percent



* 97% of aquaculture water withdrawals occur in western counties from rivers and streams and are typically flow through/non-consumptive.** Other Livestock includes cattle, horses, goats, sheep, etc.

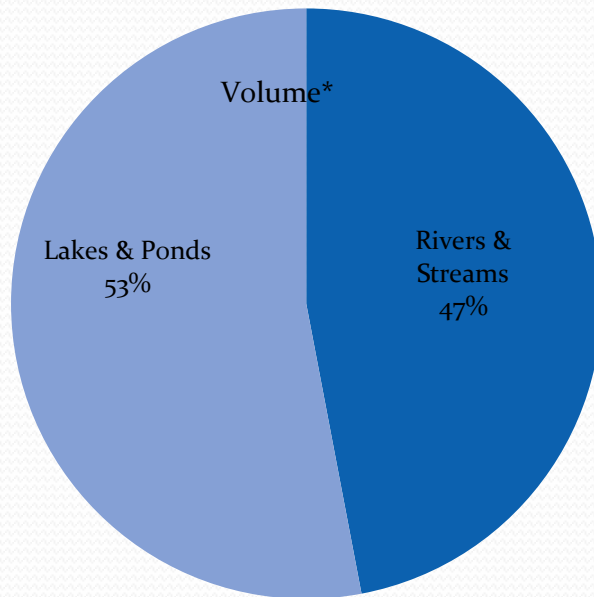
Average Daily Water Withdrawals



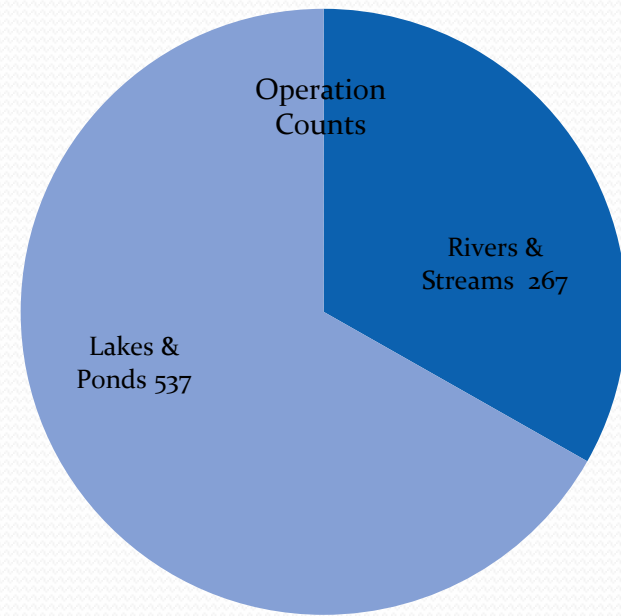
* 97% of aquaculture water withdrawals occur in western counties from the rivers and streams and are typically flow through/non-consumptive. ** Other Livestock includes cattle, horses, goats, sheep etc.

Annual Surface Water Withdrawals

Volume



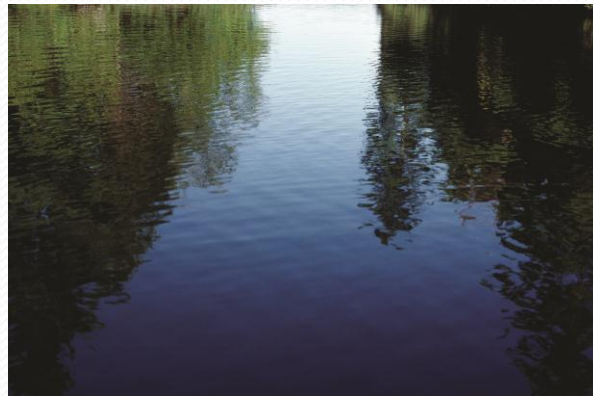
Operation Counts



* 33% of River & Stream Withdrawals are made by aquaculture operations from the western portion of the state and are typically flow through.

Benefits

- Statewide agricultural water use data
 - Survey based
 - Defensible
 - Confidential
- Public/private collaboration
- Farmer awareness of use
- Document individual farm water needs



Appreciation

- NCDA&CS
- Farm Bureau
- Commodity Associations
- NC Cooperative Extension
- NCSU
- NC Foundation for Soil and Water Conservation

