

NC Mining and Energy Commission

Quarterly Update for: Environmental Review Commission Dec 13, 2013

Presented by:

**Commissioner Jim Womack, Chairman
North Carolina Mining & Energy Commission**



Reporting

- **Annual and quarterly reports to the Joint Legislative Commission on Energy Policy and the Environmental Review Commission**
 - First annual report provided by October 1, 2012
 - First quarterly report is due by January 1, 2013

(In Preliminary Draft Now)



Standing Committees

- **Two standing committees established by Senate Bill 820:**
 - Committee on Mining
 - Committee on Civil Penalty Remissions



Additional Standing Committees

- **Environmental Standards**
 - Hydrogeological investigations, collection of baseline data, well siting, setbacks, fracturing fluids, etc.
- **Water and Waste Management**
 - Limits on water use, water and wastewater management plan, waste disposal, etc.
- **Administration of Oil & Gas**
 - Pre-drilling activities, well construction, record keeping, well spacing, etc.
- **Rules**
 - Rules properly formatted, integrated



Study Groups

- **Funding Levels and Sources**
- **Local Government Regulation**
- **Compulsory Pooling**



Stakeholder Group

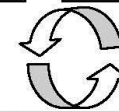
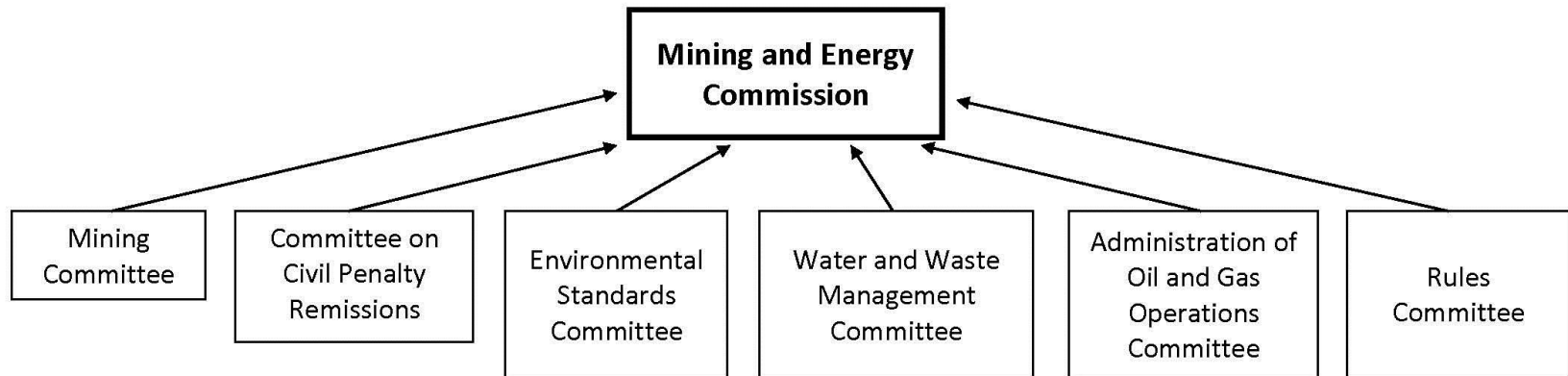
- **A group of individuals who represent the various stakeholder interests related to oil and gas management in North Carolina**
- **Meetings would occur as needed, perhaps every other month, starting with an orientation**
- **Meetings could be less frequent if the MEC does not need input at a particular stage in the process**



Stakeholder Group (continued)

- **To make discussions productive, membership would be limited to 20 to 25 people**
- **Group would disband once rules are adopted and regulatory program is established**





Study #1: Funding Levels and Potential Funding Sources

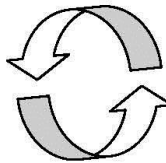
Includes: MEC members, DENR, DOT, N.C. League of Municipalities (NCLM), N.C. Association of County Commissioners (NCACC)

Study #2: Local Government Regulation

Includes: MEC members, DENR, NCLM, NCACC

Study #3: Compulsory Pooling

Includes: MEC members, DENR, Department of Justice



Stakeholder Group

- Members of the MEC
- DENR staff to take notes and facilitate
- 2 representatives of municipalities in the Triassic Basin
- 2 representatives of counties in the Triassic Basin
- 1 county health director from the Triassic Basin
- 3 environmental interest representatives
- 1 agricultural interest representative
- 1 from Consumer Protection Section of the Department of Justice
- 1 representative of Rural Advancement Foundation International-USA
- 1 representative from American Petroleum Institute
- 1 representative from America's Natural Gas Alliance
- 3 scientific and technical experts
- 1 each from the Divisions of Air Quality; Energy, Mineral and Land Resources; Waste Management; Water Quality; and Water Resources
- 1 each from the Department of Transportation, Department of Health and Human Services, Department of Labor, Department of Commerce, Division of Emergency Management, Department of Agriculture and Consumer Services, and Wildlife Resources Commission

MEC Meetings To Date:

- **September 6, 2012** (*orientation meeting*)
- **September 28, 2012** (*committee structure*)
- **November 2, 2012** (*operating procedures and committee and study group appointments*)
- **Next meeting:**
 - Committees & Study Groups* meet December 18
 - Mining & Energy Commission meets December 19

**Compulsory Pooling Study Group meets after MEC Dec 19*



2013 MEC Meeting Schedule:

- **January 24-25**
- **March 7-8**
- **May 2-3**
- **June 6-7**
- **July 25-26**
- **September 5-6** (Final Meeting Before Study Group Reports Due)
- **October 24-25**
- **December 5-6**



Ongoing Actions

- **Hiring 3 DENR Staff to Support Committees in the Rulemaking Process**
- **Changes in Commission Membership**
- **Expansion Budget Request**
- **Communication**
- **Education & Web Publishing**
- **Public Relations**



To stay abreast of the activities of the Mining and Energy Commission

Join the Shale Gas Listserv at:

<http://lists.ncmail.net/mailman/listinfo/denr.shale.gas>

Or

Visit the Mining and Energy Commission web page at:

<http://portal.ncdenr.org/web/mining-and-energy-commission/home>



Questions?

Commissioner Jim Womack
Chairman, Mining & Energy Commission
(919) 770-4783
commissioner.womack@gmail.com

Tracy E. Davis, PE, CPM
Director, Division of Energy, Mineral, and Land Resources
(919) 707-9200
tracy.davis@ncdenr.gov

