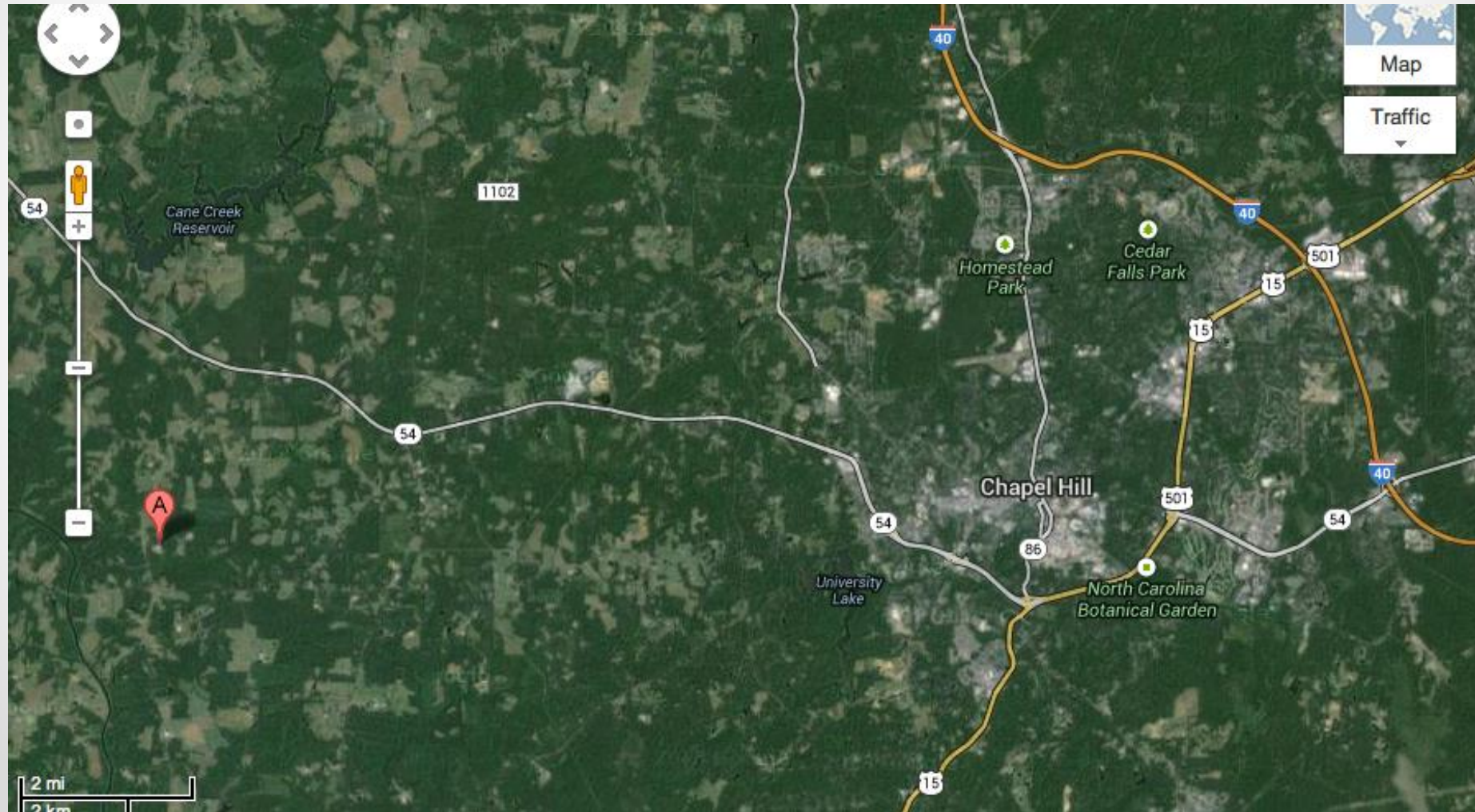


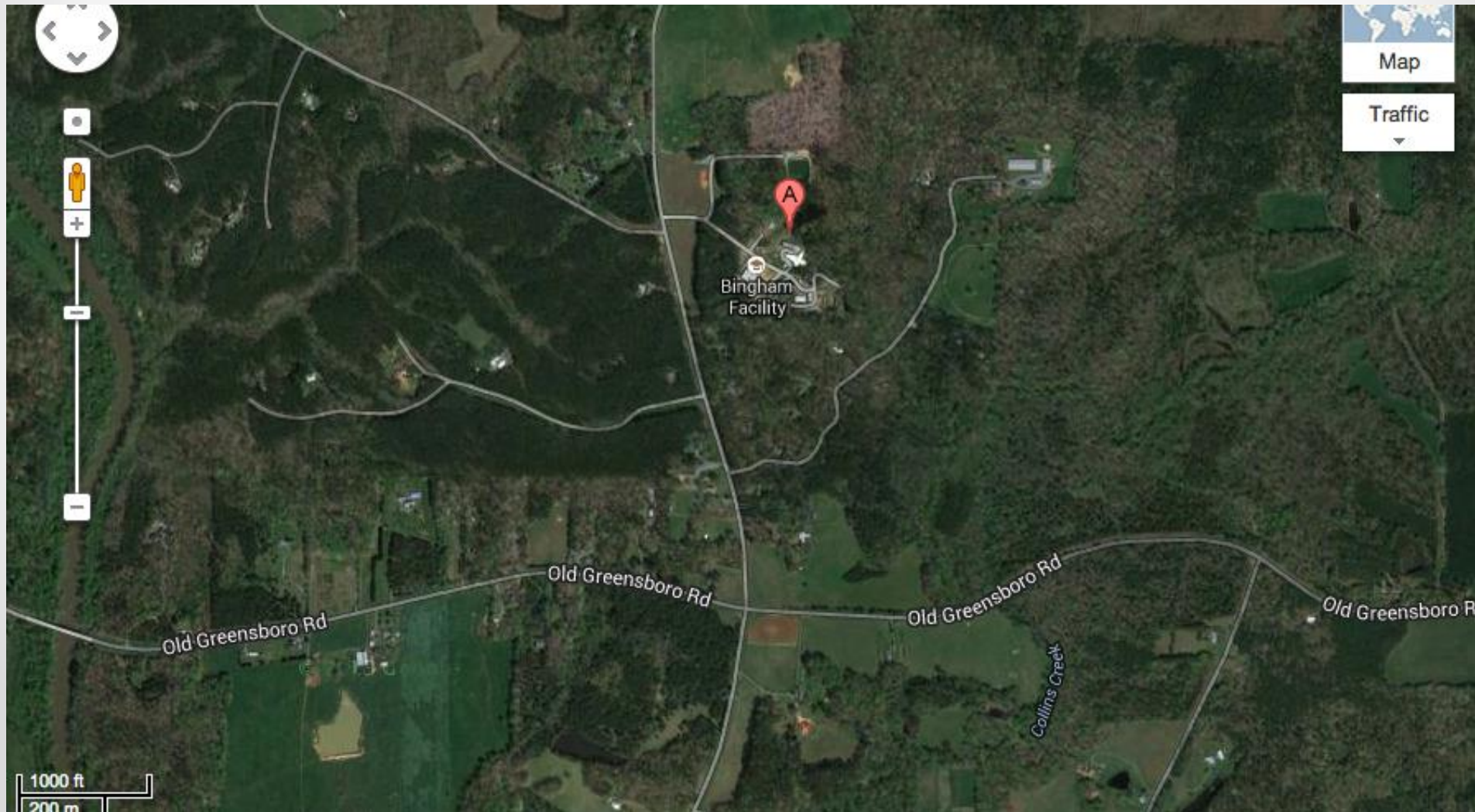
UNC Animal Research Facility - southwest Orange County

1907 Orange Chapel Clover Garden Road (13 miles west of UNC-CH campus)



Agricultural-Residential zone, Orange County

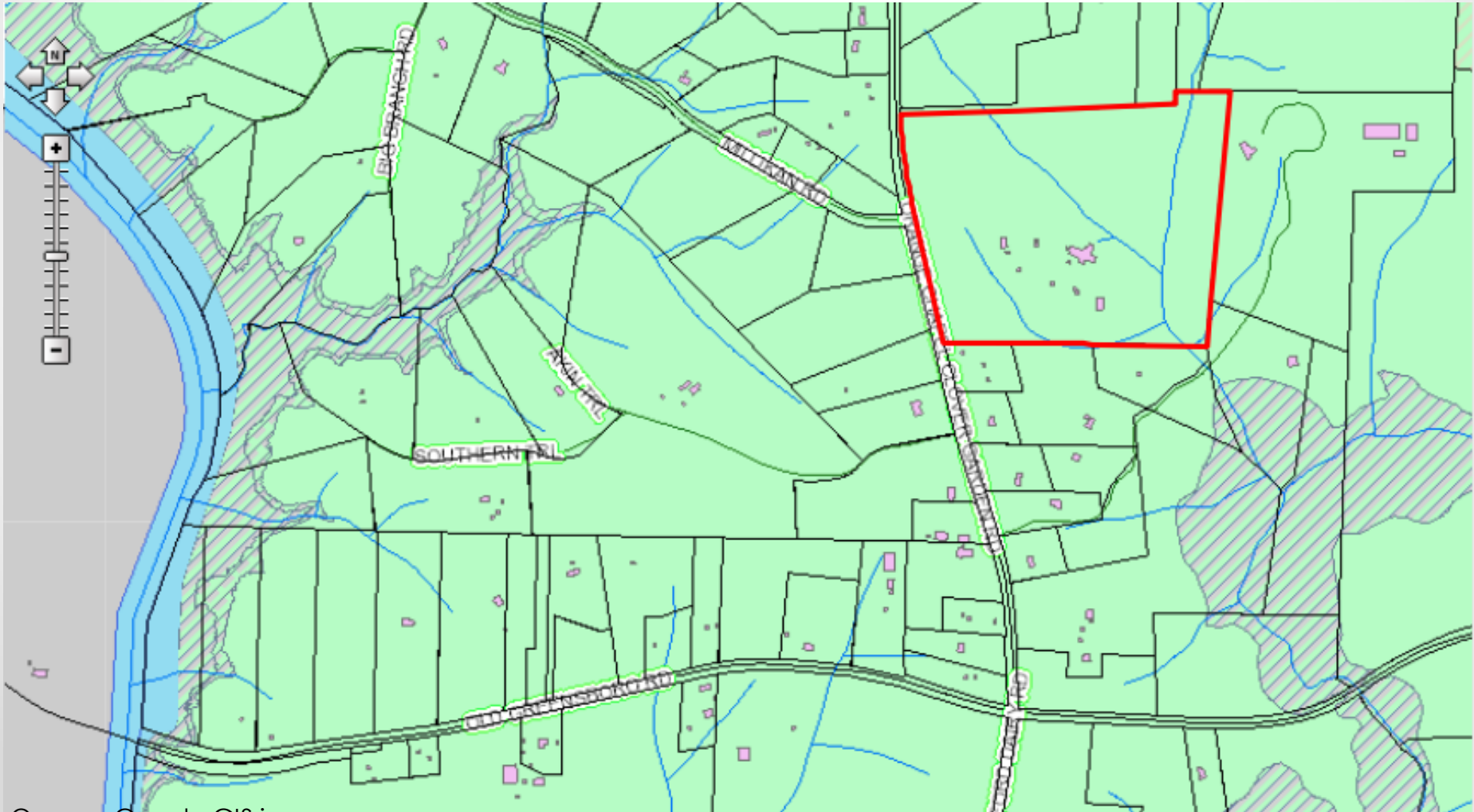
Haw River (left) Collins Creek (lower right)



UNC facility in Haw River watershed

Haw River (left)

Collins Creek (right)



- 13 structures
- 35 employees
- 1.6 million gallon animal waste lagoon
- 45 parking spots



October – December 2009

UNC waits 8 weeks to report illegal wastewater discharge from lagoon

Attachment 1 – Site Photos 12/14/2009



Photo 1 – Wastewater Storage Lagoon with green tracer dye.

NC DWQ photo

December 14, 2009: NC DWQ engineer inspects leaking lagoon, shows UNC personnel where wastewater flows overland from lagoon into creek. Underdrain pipe leads directly onto ground with no overflow tank, sensors or alarms. Both failed lagoons were found to have dozens of holes in liners. That evening, UNC leaders meet with neighbors & media, stating that spill occurred but that waste didn't reach the creek.

Attachment 1 – Site Photos 12/14/2009



NC DWQ photos

Attachment 1 – Site

Photo 3 – Wastewater Lagoon underdrain ou



Photo 7 - Wastewater overland flow towards Collins Creek.

Attachment 1 – Site Photos 12/14/2009



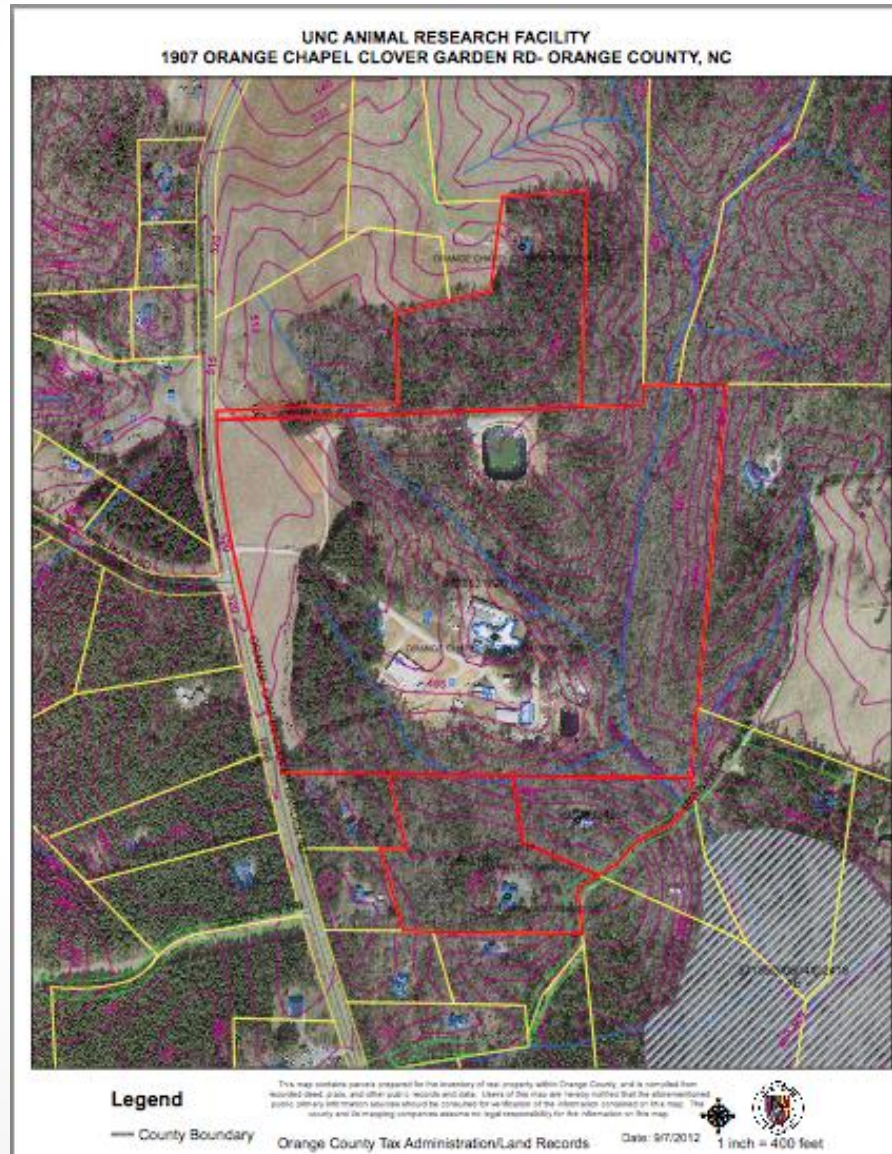
Photo 9 – Green dyed wastewater entering Collins Creek.

UNC facility site 2012



Expanded 80-acre footprint, UNC site

23 acres added in 2010 & 2012 (not on 2006 Master Plan)

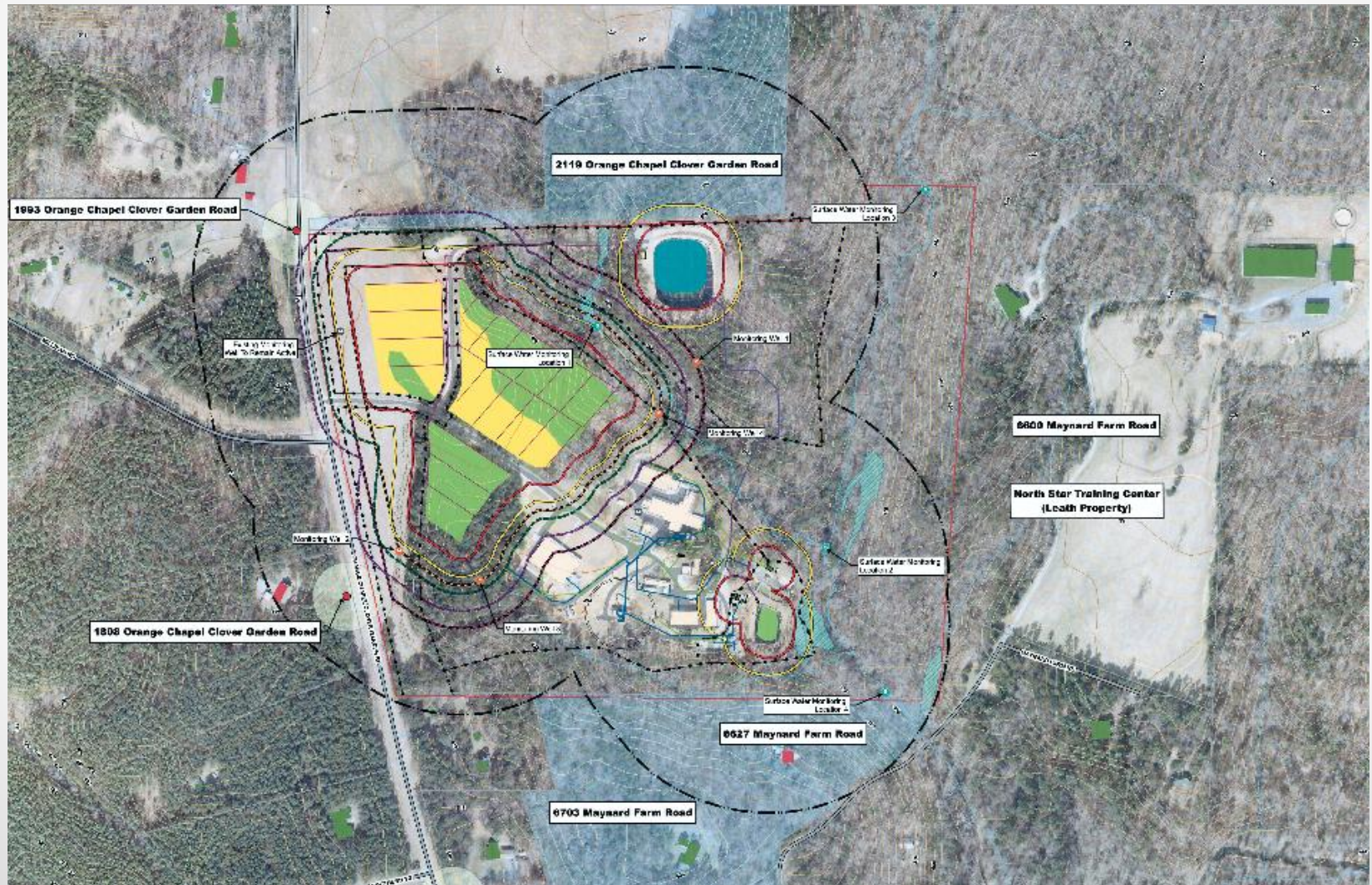


UNC 2012 plans submitted to NC DWQ: Expanded wastewater acreage despite plan for fewer employees & bldgs., and no animal waste to be treated

Turquoise lined: wetlands

Yellow & green: wastewater irrigation

Blue shaded: 23 acres residential property acquired from neighbors 2010-12



[illegible]