

Original Ground

Water, Coal Ash,
Chemical Wastes

Unlined Dam

Dam Face

Seepage Diverted
into French Drain

Groundwater and
Flow Through Old,
Buried
Stream Channels

Groundwater
Seepage

Groundwater
Seepage Emerging
(orange because laden
with iron; also contains
arsenic, boron, cobalt,
manganese)

Water of the State

Alternative (Front) View of Dam

Face

Seepage

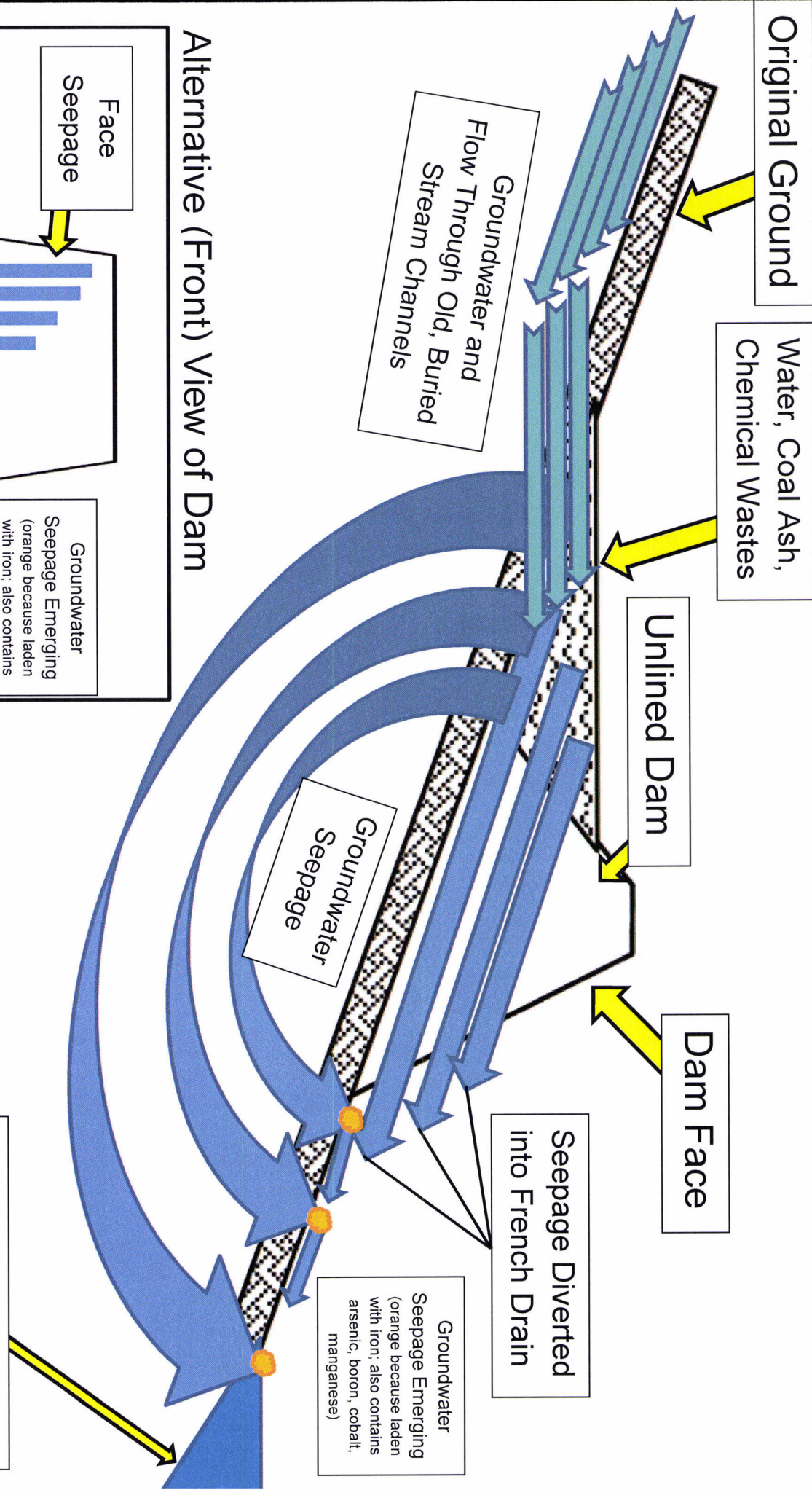
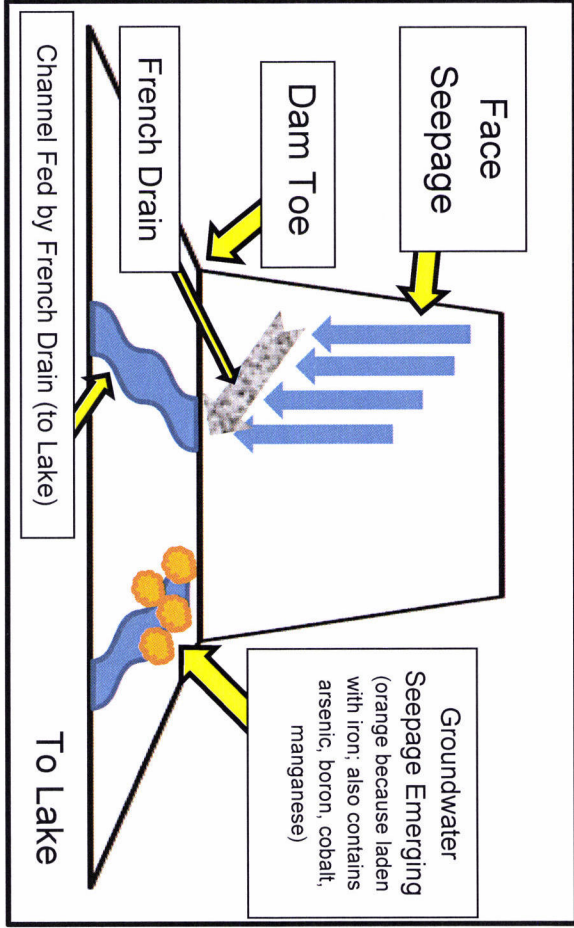
Dam Toe

French Drain

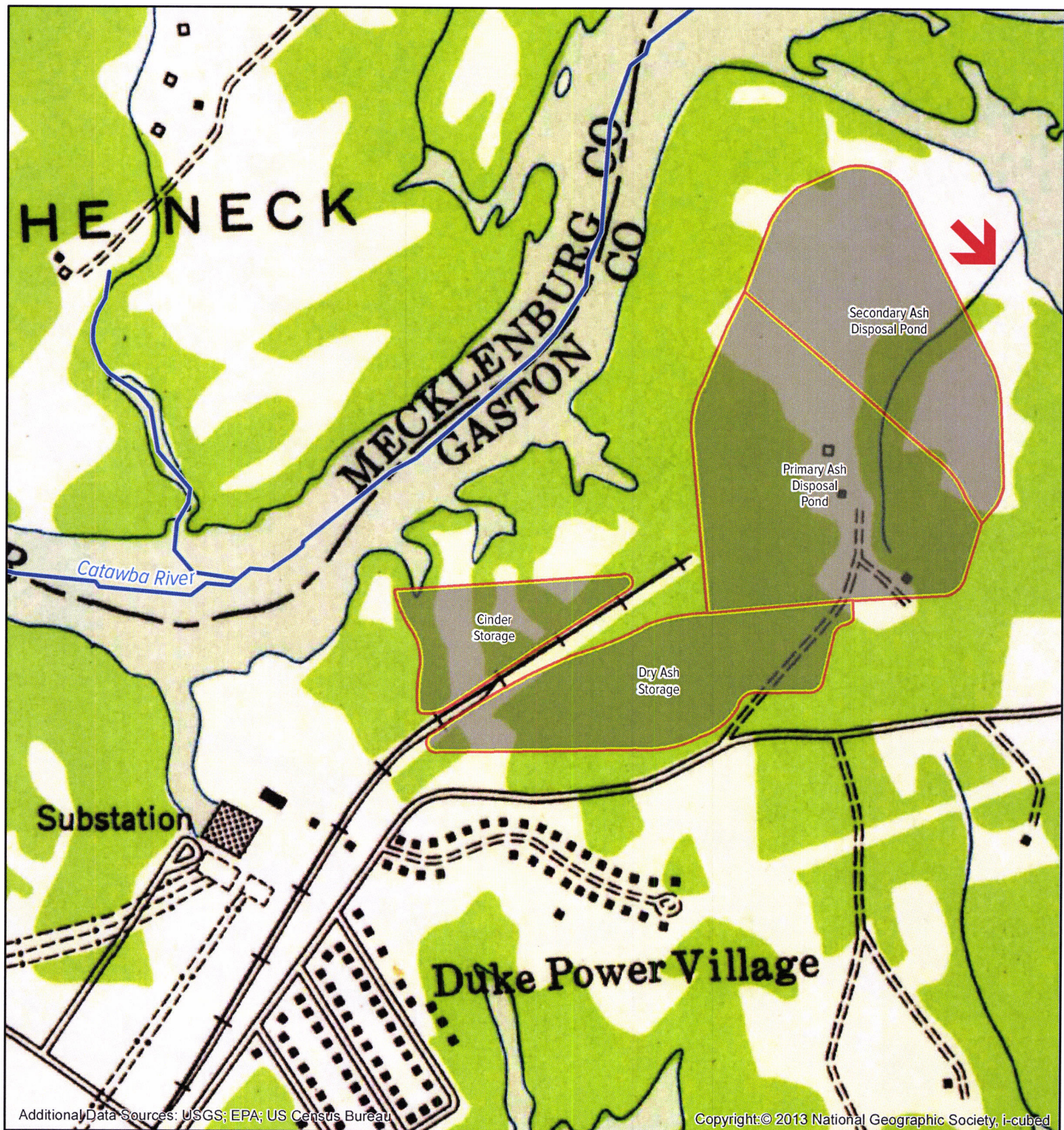
Channel Fed by French Drain (to Lake)

To Lake

Groundwater
Seepage Emerging
(orange because laden
with iron; also contains
arsenic, boron, cobalt,
manganese)

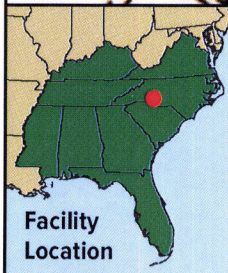


Riverbend Power Station



Additional Data Sources: USGS; EPA; US Census Bureau

Copyright: © 2013 National Geographic Society, i-cubed



DISCLAIMER: Map intended for illustrative purposes only. Ash pond and landfill boundaries are best estimates based on documents from EPA and the utilities themselves. Locations of existing and retired ash ponds and landfills were created by heads-up digitizing of aerial imagery and USGS 7.5 min. topographic maps. Outlined areas appearing to be void of a pond or landfill are thought to be retired units that are now covered in place. For additional information see SoutheastCoalAsh.Org

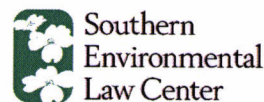
Map created by Jovian Sackett (jsackett@selcnc.org)
Last Updated: 4/21/2014

0 0.1 0.2 0.4 Miles

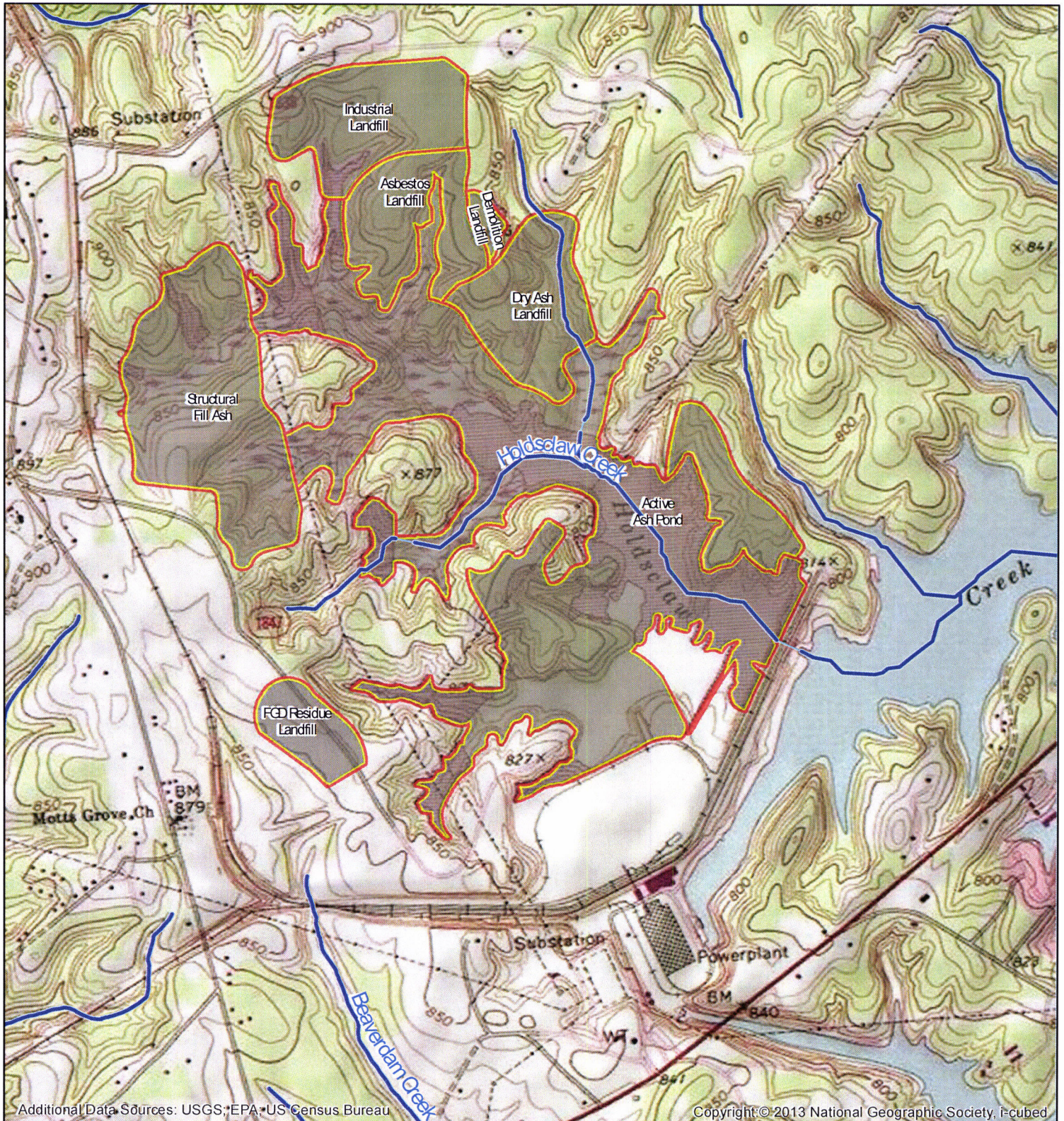
Scale varies throughout map series

Legend

- Coal Ash Pond/Landfill
- Stream/River
- Canal/Pipeline/other



Marshall Steam Station



DISCLAIMER: Map intended for illustrative purposes only. Ash pond and landfill boundaries are best estimates based on documents from EPA and the utilities themselves. Locations of existing and retired ash ponds and landfills were created by heads-up digitizing of aerial imagery and USGS 7.5 min. topographic maps. Outlined areas appearing to be void of a pond or landfill are thought to be retired units that are now covered in place. For additional information see SoutheastCoalAsh.Org

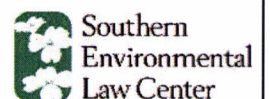
Map created by Jovian Sackett (jsackett@selnc.org)
Last Updated: 4/21/2014

0 0.175 0.35 0.7 Miles

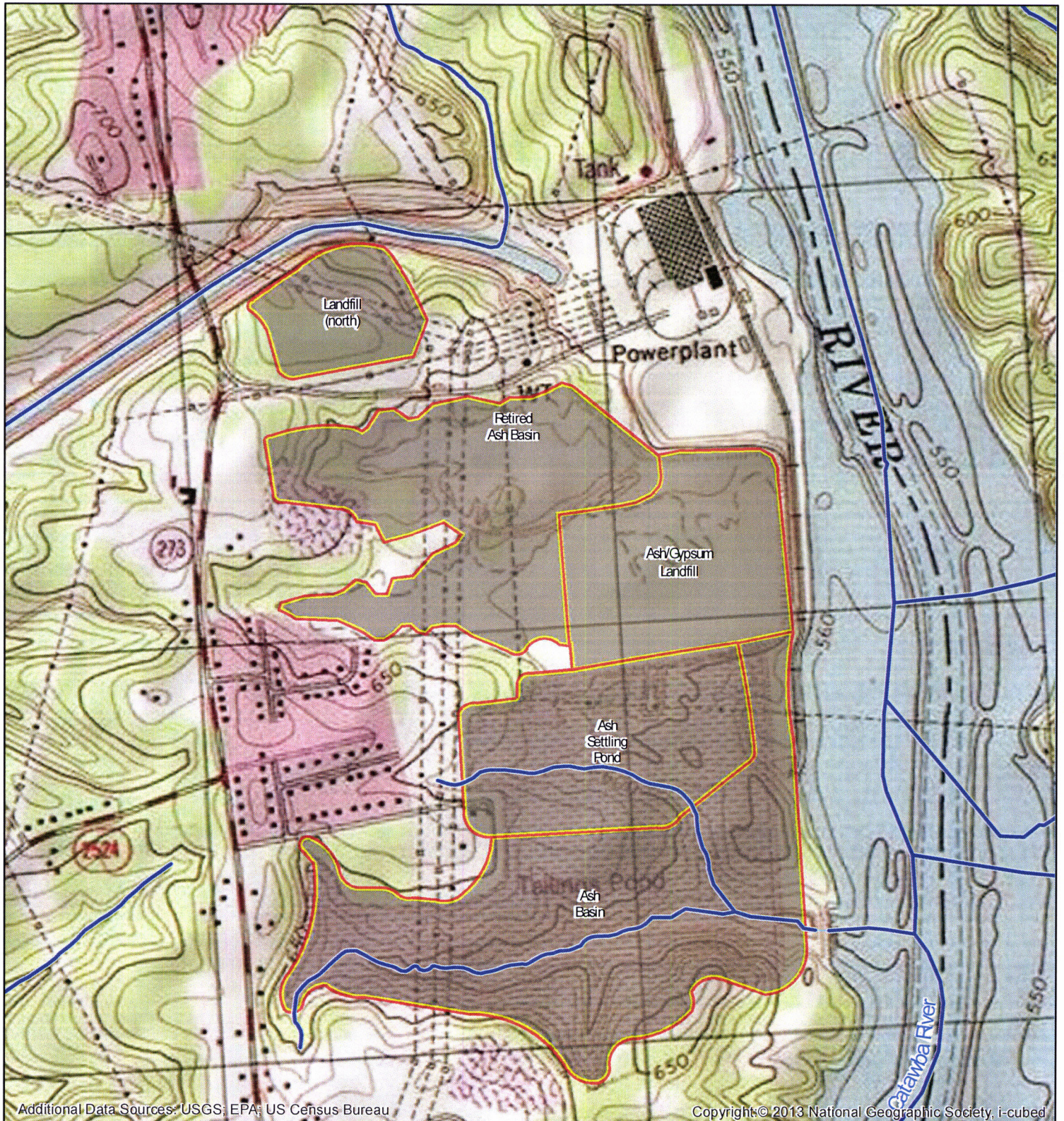
Scale varies throughout map series

Legend

- Coal Ash Pond/Landfill
- Stream/River
- Canal/Pipeline/other



G G Allen Power Station



Additional Data Sources: USGS, EPA, US Census Bureau

Copyright © 2013 National Geographic Society, i-cubed



DISCLAIMER: Map intended for illustrative purposes only. Ash pond and landfill boundaries are best estimates based on documents from EPA and the utilities themselves. Locations of existing and retired ash ponds and landfills were created by heads-up digitizing of aerial imagery and USGS 7.5 min. topographic maps. Outlined areas appearing to be void of a pond or landfill are thought to be retired units that are now covered in place. For additional information see SoutheastCoalAsh.Org

Map created by Jovian Sackett (jsackett@selcnc.org)
Last Updated: 4/21/2014

0 0.125 0.25 0.5 Miles

Scale varies throughout map series

Legend

- Coal Ash Pond/Landfill
- Stream/River
- Canal/Pipeline/other

