



PAT MCCRORY
Governor

DONALD R. VAN DER VAART
Secretary

MEMORANDUM

TO: ENVIRONMENTAL REVIEW COMMISSION

The Honorable Jimmy Dixon, Co-Chair
The Honorable Chuck McGrady, Co-Chair
The Honorable Trudy Wade, Co-Chair

JOINT LEGISLATIVE OVERSIGHT COMMITTEE ON AGRICULTURE AND
NATURAL AND ECONOMIC RESOURCES

The Honorable Pat McElraft, Co-Chair
The Honorable Roger West, Co-Chair
The Honorable Brent Jackson, Co-Chair

JOINT LEGISLATIVE TRANSPORTATION OVERSIGHT COMMITTEE

The Honorable Frank Iler, Co-Chair
The Honorable John A. Torbett, Co-Chair
The Honorable Bill Rabon, Co-Chair

FROM: Mollie Young, Director of Legislative Affairs, NCDEQ

SUBJECT: Catalog of Wetland and Stream Mitigation Credits

DATE: December 30, 2016

Pursuant to S.L. 2016-94 Section 14.21, which “*directs the Division of Mitigation Services of the Department of Environmental Quality, with the assistance of the Department of Transportation, to catalog all wetland and stream mitigation credits in State ownership. The Division must provide the catalog to the Environmental Review Commission, the Joint Legislative Oversight Committee on Agriculture and Natural and Economic Resources, and the Joint Legislative Transportation Oversight Committee by December 31, 2016*”, I have attached the following report.

This report includes a complete inventory of all mitigation sites developed by the NC Division of Mitigation Services and the NC Department of Transportation including sites developed for completed, ongoing and future transportation projects.

If you have any questions or need additional information, please contact me by phone at (919) 339-9433 or via e-mail at mollie.young@ncdenr.gov.

cc: Michael Ellison, Director, Division of Mitigation Services, NCDEQ
Jeff Warren, Policy Advisor, Office of Senate President Pro Tem
Mitch Gillespie, Policy Advisor, Office of House Speaker
Jeff Hudson, Legislative Analysis Division, NCGA



State of North Carolina | Environmental Quality

1601 Mail Service Center | Raleigh, North Carolina 27699-1611

919-707-8600

Catalog of Wetland and Stream Mitigation Credits

Prepared for:

Environmental Review Commission
Joint Legislative Oversight Committee on Agriculture and Natural and Economic Resources
Joint Legislative Transportation Oversight Committee of the North Carolina General Assembly

Prepared by:



Division of Mitigation Services

December 31, 2016

Contents

Executive Summary	3
I. Background.....	4
A. Scope of Work.....	5
B. NC Division of Mitigation Services	6
C. NC Department of Transportation	6
II. Compensatory Mitigation Inventory	6
A. Number of Projects.....	7
B. Transferred Projects	7
C. Start Dates.....	7
D. Asset Summaries.....	10
E. Total NCDOT Managed Assets.....	12
F. Total DMS Managed Assets.....	14
Appendix I: Complete List of All DMS and NCDOT Stream and Wetland Mitigation Sites	17

Executive Summary

This report was developed in response to S.L. 2016-94 Section 14.21, which required the NC Division of Mitigation Services to catalog wetland and stream mitigation credits in State ownership. The NC Division of Mitigation Services received input from the NC Department of Transportation to inventory the mitigation sites. This report includes a complete inventory of all mitigation sites developed by the NC Division of Mitigation Services and the NC Department of Transportation including sites developed for completed, ongoing and future transportation projects. In total, 795 stream and wetland compensatory mitigation sites were identified. Of these, 342 were initiated by the NC Department of Transportation and 453 by the NC Division of Mitigation Services. NC Department of Transportation has transferred credit management responsibility for 121 of the 342 compensatory mitigation projects to the NC Division of Mitigation Services for use in the NC Department of Transportation Stream and Wetland ILF program. NC Department of Transportation manages the credits for 221 mitigation projects, the majority of which have been utilized. NC Division of Mitigation Services manages the credits for the other 574 projects.

I. Background

The NC Department of Transportation (NCDOT) was historically the oldest and largest state producer of stream and wetland mitigation sites in North Carolina. To date, NCDOT has produced 342 stream and wetland compensatory mitigation projects. NCDOT developed its first mitigation site, Company Swamp, in 1982. NCDOT did not develop its second project until 1990. The 1990's marked a substantial acceleration in the development of compensatory mitigation due to rapidly increased regulatory requirements of state and federal agencies, primarily the Wilmington district, U.S. Army Corps of Engineers (USACE). Prior to the 1990s, only wetland mitigation had been occasionally required by the regulatory agencies to offset environmental impacts. In the 1990s, both stream and wetland compensatory mitigation became required on a more consistent basis for environmental impacts. NCDOT developed 89 compensatory mitigation projects in the 1990s, including some of the largest mitigation sites ever built in North Carolina.

During the late 1990s, the NCDOT began to experience increased project delays in its transportation-infrastructure program because of unavoidable environmental impacts in its development projects. NCDOT has estimated that 55% of all transportation projects were being delayed due to mitigation issues in the 1990s.

The private development community was also experiencing severe mitigation problems in the 1990s. In 1996 the North Carolina General Assembly (§ 143-214.8) established the Wetlands Restoration Program (WRP) as a statewide in-lieu fee program (ILF) to assist the development community in meeting compensatory mitigation requirements. When a developer utilizes an ILF mitigation program, the developer makes a payment to the ILF program in-lieu of providing their own mitigation as required by the USACE permit. Upon payment, the compensatory mitigation obligation transfers to the ILF program and the developer is given a receipt that confirms they have completed the mitigation burden of their permit. In 1998, NCDOT began utilizing the WRP to meet a portion of its mitigation needs.

In 2000, the NCDOT and NCDENR mitigation programs were functioning independently with different operating processes, a situation that failed to meet the satisfaction of federal and state regulatory agencies or environmental interest groups. To address this situation, a cooperative process-improvement initiative in North Carolina involving more than 10 state and federal agencies convened in 2001. Obstacles identified in the initiative included inadequate communication, undefined roles and responsibilities, poor synchronization in executing existing mitigation and permitting processes, and a lack of clearly understood mitigation-success objectives.

This panel's conclusions led to recommendations that mitigation for NCDOT should be provided years in advance of project impacts, and be designed to replace unavoidable functional losses to wetlands and riparian buffers. The panel also conceived and set into motion the creation of the Ecosystem Enhancement Program (EEP). A Memorandum of Agreement (MOA) between NCDOT, NCDENR and the U.S. Army Corps of Engineers Wilmington District established the EEP's procedures for operating the "NCDOT Stream and Wetland ILF Program" on July 22, 2003. The MOA merged and transitioned the formerly NCDENR-housed WRP and the NCDOT in-house mitigation programs into one formal, comprehensive, and expanded initiative of advanced mitigation to offset impacts to waters and wetlands due to transportation projects with the assessment, restoration, creation, preservation, and enhancement of natural resources in North Carolina. The NCDOT retained its on-site compensatory mitigation program and continues to implement permittee-provided mitigation on rights-of-way and other properties acquired by NCDOT. (Note: In 2010, the MOA was superseded by a new In-Lieu Fee Instrument to comport with new federal mitigation rules.)

As part of the 2003 MOA, the NCDOT transferred some of its staff and all of its off-site mitigation projects and surplus credits to the EEP for implementation and management within the newly formed NCDOT Stream and Wetland ILF program. The purpose of the NCDOT Stream and Wetland ILF program is to develop 100% of NCDOT stream and wetland mitigation needs five years before permits are needed for transportation

projects. Since 2003, the EEP, now the Division of Mitigation Services (DMS), has been the primary provider of off-site compensatory mitigation for the NCDOT. The NCDOT orders mitigation from the DMS by submitting a mitigation order on February 1st of each year. The order includes all of the projected mitigation needs for the entire funded State Transportation Improvement Program (STIP). The DMS evaluates existing stream and wetland asset inventories and procures only the remaining mitigation credits necessary to complete the mitigation order. NCDOT may modify the order as new and revised environmental documentation becomes available. **Since the establishment of the NCDOT Stream and Wetland ILF program, there have been zero transportation project delays due to mitigation.**

In 2006, it was discovered that NCDOT had invested and developed considerable advanced mitigation credits (surplus or 'perched' assets) located in areas where current or projected mitigation needs did not exist. NCDOT was experiencing considerable financial strain and desired to utilize these advanced mitigation credits to offset then current and near term mitigation needs in other locations. The surplus assets were determined to come from the following sources:

- 1) Prior to 2003, NCDOT did not emphasize mitigation forecasting, so large mitigation projects were built without any specific mitigation needs corresponding to NCDOT projects. Lack of accurate mitigation projections was estimated to account for 85% of the credit surplus.
- 2) 2003-2006, NCDOT mitigation projections exceeded actual needs, contributing to about 10-15% of surplus credits.
- 3) 2006, Incidental procurement of asset types as components of targeted assets for individual projects generated 0-5% of the surplus.
- 4) 2006, Asset Yield Changes between project initiation and closeout added 0-5% to the surplus.

In 2007, a workshop, including NCDOT, NCEEP, USACOE and other state and federal agencies, was held to agree on some solutions to reduce the number of surplus assets. Four solutions were agreed upon:

- 1) Project future STIP needs to identify potential mitigation needs 20 years into the future and set assets aside to meet these needs.
- 2) Case by Case – for an individual STIP, NCDOT petitions the regulatory agencies for the use of a surplus mitigation site to meet permit requirements. Examples could include using out of CU or out of river basin and/or out-of-kind mitigation (e.g. use riparian wetland credits to offset nonriparian wetland impacts).
- 3) Create an Umbrella Mitigation Bank - existing surplus credits could be used in an approved service area.
- 4) Sell credits and/or land – NCDOT could possibly sell mitigation sites and/or mitigation assets to NCEEP, private firms or other states.

In 2015, the EEP was renamed the Division of Mitigation Services. The Division of Mitigation Services is the national leader in providing in-lieu fee compensatory stream and wetland mitigation.

A. Scope of Report

This report was produced in response to the legislative inquiries posed in S.L. 2016-94 Section 14.21. Section 14.13(g) states:

CATALOG OF WETLAND AND STREAM MITIGATION CREDITS

SECTION 14.21. The Division of Mitigation Services shall catalog all wetland and stream mitigation credits in State ownership. The Department of Transportation shall provide support and assistance to the Division in carrying out the requirements of this section, including providing access to data on mitigation credits acquired by the Department of Transportation associated with completed, ongoing, and planned transportation projects. The Division shall provide the catalog along with any relevant supporting information to the Environmental Review Commission, the Joint Legislative Oversight Committee on Agriculture and Natural and Economic Resources, and the Joint Legislative Transportation Oversight Committee no later than December 31, 2016.

This report includes a comprehensive inventory of all stream and wetland compensatory mitigation projects initiated, completed, purchased or otherwise established by the NC DMS and the NC DOT.

B. NC Division of Mitigation Services

The Department of Environmental Quality, Division of Mitigation Services (DMS), restores wetlands and waterways to offset permitted environmental damage from economic development. DMS currently offers four In-Lieu Fee mitigation programs designed to help private and public entities comply with state and federal compensatory mitigation requirements for streams, wetlands, riparian buffers, and nutrients. DMS does not receive legislative appropriations and operates solely on voluntary customer receipts. The NCDOT and other developers voluntarily use DMS to move projects forward in a timely and affordable manner. The NCDOT has used DMS as its main provider of off-site compensatory mitigation credits since 2003 and is the program's largest customer. DMS purchases released credits from mitigation banks and contracts with private sector service providers in advance of transportation permits.

C. NC Department of Transportation

The NC Department of Transportation (NCDOT) is the state agency responsible for the development, repair, and operations of North Carolina's highways, bridges, ferries, and other modes of transportation. The NCDOT is responsible for producing "on-site" compensatory mitigation. On-site is defined as compensatory mitigation that is conducted on property parcels for which a claim (or partial claim) to such parcels (1) is deemed necessary to construct and maintain a transportation project or (2) determined to be acquired by NCDOT for rationale other than compensatory mitigation. NCDOT orders the remainder of its compensatory mitigation needs as "off-site" mitigation through the DMS. Off-site mitigation is defined as all compensatory mitigation that is not on-site. On June 22, 2016, NCDOT and DMS signed an updated Memorandum of Agreement that continued the NCDOT policy to acquire off-site compensatory mitigation through the DMS, but also created exceptions to the policy where NCDOT may pursue off-site mitigation after consultation and approval from DMS. NCDOT is also resurrecting a process for direct purchase of mitigation bank credits, which is potentially problematic because many of NCDOT's nonperforming mitigation assets (credits more than ten years old and still not assigned to a highway project) are bank credits.

II. Compensatory Mitigation Inventory

The NCDOT and DMS maintain separate databases and mitigation ledgers of compensatory mitigation sites. NCDOT submitted lists of all projects since 1982 to DMS for inclusion in this legislative report. Together, NCDOT and DMS compensatory mitigation sites represent nearly 100% of State-derived mitigation sites in North Carolina.

A. Number of Projects

In total, the DMS and the NCDOT have produced 795 compensatory mitigation projects. As of this report, NCDOT has initiated 342 stream and wetland compensatory mitigation projects. Of the 342 mitigation projects, NCDOT transferred 142 projects to DMS for continued implementation and/or credit management. DMS has initiated 453 projects. A complete listing of compensatory mitigation sites is located in Appendix I.

B. Transferred Sites

In cases where NCDOT had originally initiated a mitigation site and subsequently transferred that site to DMS for implementation and/or credit management, Appendix I shows the agency that initiated the project as well as the agency currently responsible for credit management on the project. One of the goals of forming the DMS (formerly EEP) was to eliminate the duplication of mitigation programs across different departments. Consequently, NCDOT transferred remaining unused credits to DMS for credit management in the new NCDOT Stream and Wetland ILF. Projects were mostly transferred to DMS during the 2003 to 2005 Transition Period though 21 additional projects were transferred after that period. NCDOT transferred projects as a particular milestone or contracting phase reached completion. This transfer procedure avoided potential complications associated with mid-contract transitions.

C. Start Dates

The project start date is not captured in the NCDOT mitigation database. However, since the construction date is captured, the start date for each project can be approximated. Generally, each mitigation site involves approximately two years of right of way work and one year of mitigation site planning/design. Therefore, the start date for each NCDOT-initiated mitigation project has been approximated as three years prior to the construction date. The oldest project in the inventory is Company Swamp, which was started in 1982. It is the only mitigation project from the 1980s. The majority of projects were initiated in the mid-2000s shortly after the EEP was formed.

The period 2003 to 2005 is known as the Transition Period. The Transition Period was an accelerated mitigation procurement effort designed to ramp up the new EEP's credit inventory to establish at least five years of advanced stream and wetland mitigation credits for NCDOT transportation projects. The transition period allowed for NCDOT's outstanding mitigation requirements to be temporarily met with approved wetland and stream high quality preservation (HQP) credits. After the transition period, half of the preservation credit placeholders had to be replaced with approved restoration credits. Consequently, many of the projects acquired during this 2003-2005 period were large preservation tracts.

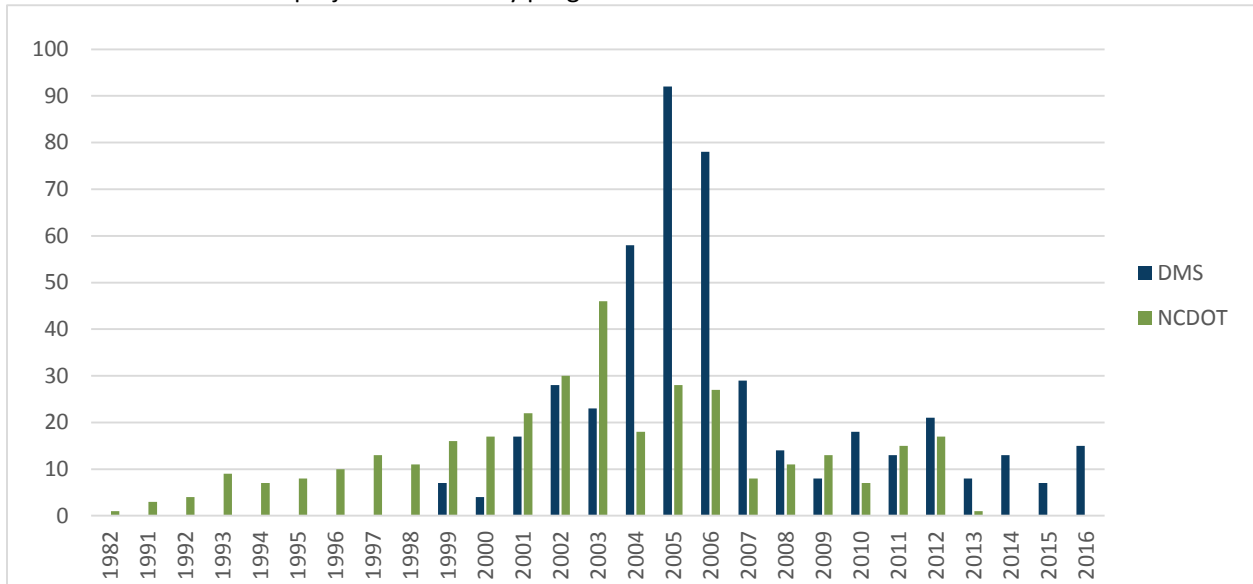
The 2000's also represented an increase in mitigation projects designed to offset the significant spike in commercial and residential development in North Carolina. Table 1 and Chart 1 below show the projects

started by each Department by year. 2003 marks the year that DMS was to become responsible for all of NCDOT off-site mitigation. After 2003, NCDOT initiated primarily on-site mitigation projects, though 54 projects were initiated and transferred to DMS between 2003 and 2008. The last transferred project occurred in 2008. NCDOT had no new projects listed in their database for the last 3 years (2013-2016), although the Board of Transportation did authorize spending over \$7 million to purchase credits from a mitigation bank.

Table 1. Number of new stream & wetland projects initiated by program

Year	DMS	NCDOT	Totals
1982	0	1	1
1991	0	3	3
1992	0	4	4
1993	0	9	9
1994	0	7	7
1995	0	8	8
1996	0	10	10
1997	0	13	13
1998	0	11	11
1999	7	16	23
2000	4	17	21
2001	17	22	39
2002	28	30	58
2003	23	46	69
2004	58	18	76
2005	92	28	120
2006	78	27	105
2007	29	8	37
2008	14	11	25
2009	8	13	21
2010	18	7	25
2011	13	15	28
2012	21	17	38
2013	8	1	9
2014	13	0	13
2015	7	0	7
2016	15	0	15
Totals	453	342	795

Chart 1. Number of new projects initiated by program



D. Asset Summaries

Since mitigation projects can vary significantly by size, Tables 2a and 2b below and Charts 2a and 2b below summarize the projects by feet and acres and by program. As you can see in the tables and charts, NCDOT had been the major acquirer of wetland mitigation prior to the formation of EEP. During the 2003-2005 Transition Period, significant stream and wetland High Quality Preservation (HQP) was procured as well as other traditional restoration projects. These procurements jump started the build-up of advanced mitigation to address the seven-year Transportation Improvement Plan.

Table 2a. Stream feet initiated per year by program

Year	DMS	NCDOT	Total
1982	0	0	0
1991	0	0	0
1992	0	0	0
1993	0	0	0
1994	0	0	0
1995	0	2,200	2,200
1996	0	6,721	6,721
1997	0	28,161	28,161
1998	0	4,802	4,802
1999	28,684	71,012	99,696
2000	5,258	57,501	62,759
2001	66,808	38,514	105,322
2002	108,308	92,356	200,664
2003	222,927	111,859	334,786
2004	914,743	71,313	986,056
2005	298,770	28,112	326,882
2006	568,907	138,877	707,783
2007	189,947	10,236	200,183
2008	94,560	11,163	105,723
2009	57,038	5,562	62,600
2010	94,704	1,730	96,434
2011	78,155	5,977	84,132
2012	133,685	16,540	150,225
2013	15,558	1,877	17,435
2014	81,444	0	81,444
2015	11,461	0	11,461
2016	97,893	0	97,893
Total	3,068,848	704,513	3,773,361

Table 2b. Wetland acres Initiated per year by program

Year	DMS	NCDOT	Total
1982	0	976	976
1991	0	1	1
1992	0	6	6
1993	0	570	570
1994	0	218	218
1995	0	1,221	1,221
1996	0	1,293	1,293
1997	0	483	483
1998	0	1,282	1,282
1999	130	4,987	5,117
2000	288	1,141	1,429
2001	63	543	606
2002	72	1,636	1,709
2003	769	1,855	2,624
2004	7,359	864	8,222
2005	2,744	3,262	6,006
2006	775	255	1,030
2007	86	111	197
2008	26	21	47
2009	8	3	11
2010	139	14	153
2011	87	6	93
2012	116	1	117
2013	24	0	24
2014	28	0	28
2015	52	0	52
2016	114	0	114
Total	12,879	20,748	33,627

Chart 2a. Total stream feet initiated by program

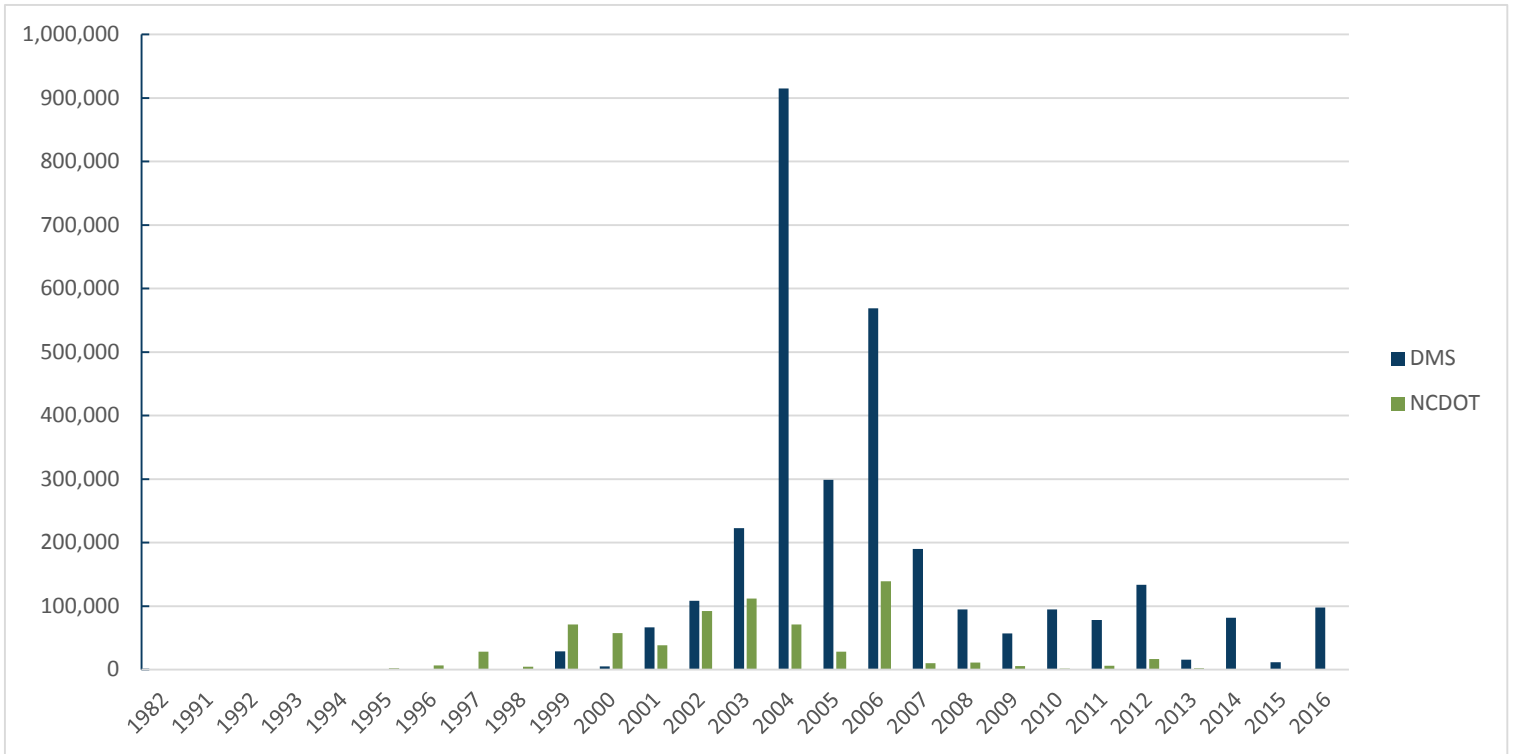
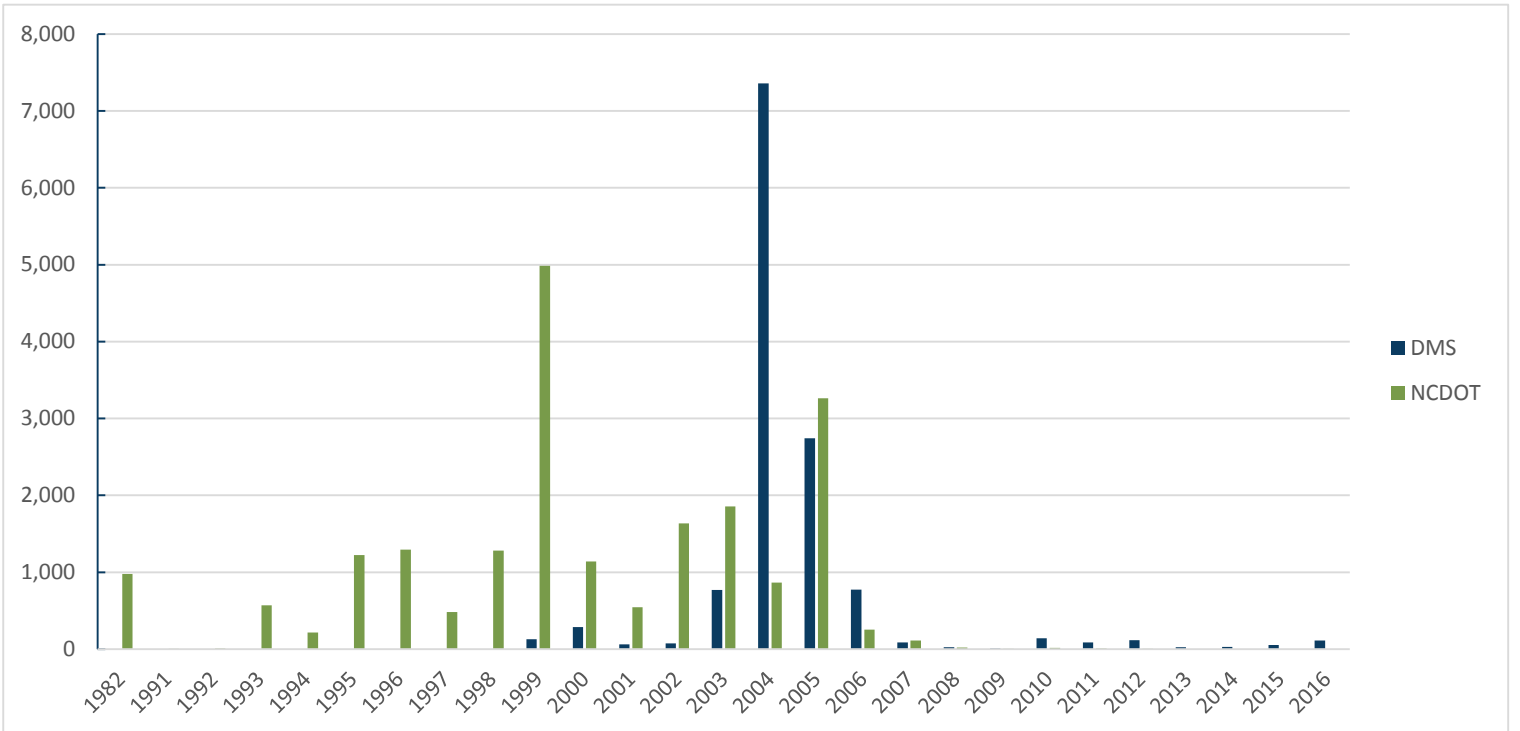


Chart 2b. Total wetland acres initiated by program



E. Total NCDOT-Managed Assets

NCDOT currently manages credits associated with on-site mitigation projects that were developed by NCDOT and used as permittee mitigation. All of NCDOT's off-site mitigation project credits were transferred to DMS for incorporation into the NCDOT Stream and Wetland ILF (beginning in 2003 and ending in 2008). Table 3 below details the on-site assets developed and managed by NCDOT.

Table 3. NCDOT-managed compensatory mitigation assets by start year

Years	Stream (feet)	Riparian Wetland (acres)	Nonriparian Wetland (acres)	Coastal Marsh Wetland (acres)	Total Wetlands
1991	0	0.28	0.00	0.90	1.18
1992	0	0.00	0.00	6.10	6.10
1993	0	125.50	1.98	50.59	178.07
1994	0	116.12	61.27	0.00	177.39
1995	2,200	6.40	37.10	3.56	47.06
1996	5,621	189.60	444.20	7.33	641.13
1997	18,983	105.20	0.00	0.00	105.20
1998	3,490	66.05	0.00	2.01	68.06
1999	3,009	73.23	467.00	13.70	553.93
2000	6,190	65.42	21.40	0.88	87.70
2001	9,471	47.24	0.00	0.00	47.24
2002	12,991	9.49	6.13	8.00	23.62
2003	15,030	34.63	69.46	21.33	125.42
2004	5,668	16.22	700.46	0.00	716.68
2005	8,326	4.88	0.00	0.64	5.52
2006	6,763	0.59	0.00	0.00	0.59
2007	2,874	1.95	0.00	0.00	1.95
2008	9,313	14.95	1.00	2.84	18.79
2009	5,562	3.38	0.00	0.00	3.38
2010	1,730	13.89	0.00	0.00	13.89
2011	5,977	4.41	0.00	1.40	5.81
2012	16,540	0.80	0.00	0.00	0.80
2013	1,877	0.00	0.00	0.00	0.00
NCDOT Total	141,615	900.23	1,810.00	119.28	2,829.51

Most of these assets have been utilized as permittee mitigation. Table 4 lists the remaining unused credits that are being managed for future compensatory mitigation use. Note the tables below list the NCDOT inventory in feet and acres rather than in mitigation credits.

Table 4. NCDOT-managed net remaining assets.

River Basin	Stream				Riparian				Nonriparian				Coastal Marsh			
	Restoration	Enhancement I	Enhancement II	Preservation	Restoration	Creation	Enhancement	Preservation	Restoration	Creation	Enhancement	Preservation	Restoration	Creation	Enhancement	Preservation
Broad	0															
Cape Fear	4,677.5	0.0		0.0	32.51	0.00	0.00	2.21	0.00		0.00	0.00	0.08			
Catawba	694.0	0.0			0.00	0.00	0.00	0.00								
Chowan	0.0			0.0	0.03		0.00	0.00	0.29			0.00	0.00	0.00		
French Broad	12.0	0.0		0.0			0.00									
Hiwassee	0.0															
Little Tennessee	0.0			0.0	0.00			0.00				0.00				
Lumber	0.0	0.0		0.0	0.00	0.71		0.00	1.22		0.00	0.00	0.47			
Neuse	6,079.5	1,160.0		1,460.0	54.50	0.00	97.58	22.86	10.59	0.00	1.00	0.00	4.56	0.00	0.18	0.24
New	0.0															
Pasquotank	0.0				0.00	0.00		0.00	0.00	0.00	0.00	0.00	0.71	0.00		0.00
Roanoke	0.0	261.0		0.0				0.00	0.00			0.00				
Tar-Pamlico	0.0	371.0		0.0	1.74	0.19	0.00	0.00	88.94	2.25		4.98	0.31	0.90		18.11
White Oak	0.0			0.0	8.58			0.00	0.00		46.00	0.00	5.86	0.00		12.92
Yadkin	0.0															
Yadkin-Pee Dee	1,342.5	0.0		0.0	0.00	0.00	0.00	10.20				5.27				
Grand Total	12,805.5	1,792.0	0.0	1,460.0	97.36	0.90	97.58	35.27	101.04	2.25	47.00	10.25	11.99	0.90	0.18	31.27
Total Stream	16,057.5															
Total Riparian	231.0															
Total Nonriparian	160.5															
Total Coastal Marsh	44.3															

F. Total DMS-Managed Assets

The DMS inventory includes the assets from all of the projects that DMS initiated as well as all of the surplus mitigation NCDOT developed and transferred to DMS between 2003 and 2008. The Table 5 below shows the total number of assets in DMS management.

Table 5. DMS-managed stream and wetland assets (includes transferred credits)

Years	Stream (feet)	Riparian Wetland (acres)	Nonriparian Wetland (acres)	Coastal Marsh Wetland (acres)	Total Wetlands
1982	0	975.67	0.00	0.00	975.67
1991	0	0.00	0.00	0.00	0.00
1993	0	0.00	391.50	0.00	391.50
1994	0	40.20	0.00	0.00	40.20
1995	0	363.00	724.71	86.68	1,174.39
1996	1,100	222.00	429.60	0.00	651.60
1997	9,178	378.24	0.00	0.00	378.24
1998	1,312	24.35	831.30	358.04	1,213.69
1999	96,687	1,309.80	3,250.35	2.69	4,562.84
2000	56,569	477.99	862.90	0.30	1,341.19
2001	95,851	328.94	230.00	0.00	558.94
2002	187,673	1,645.79	22.90	16.60	1,685.29
2003	319,756	958.64	1,404.83	135.18	2,498.65
2004	980,388	6,201.46	1,301.83	2.50	7,505.79
2005	318,556	994.63	4,820.25	185.10	5,999.98
2006	701,020	881.28	147.82	0.00	1,029.10
2007	197,309	193.35	1.70	0.00	195.05
2008	96,410	27.87	0.13	0.00	28.00
2009	57,038	7.97	0.00	0.00	7.97
2010	94,704	120.19	19.11	0.00	139.30
2011	78,155	73.00	14.00	0.00	87.00
2012	133,685	61.87	53.90	0.00	115.77
2013	15,558	17.19	6.54	0.00	23.73
2014	81,444	27.68	0.00	0.00	27.68
2015	11,461	41.30	11.00	0.00	52.30
2016	97,893	24.80	88.90	0.00	113.70
Total	3,631,746	15,397.22	14,613.27	787.09	30,797.58

The data in Table 5 represent the total number of assets developed for both of its stream and wetland ILF programs (Statewide Stream and Wetland ILF Program and NCDOT Stream and Wetland ILF Program). Unlike the NCDOT on-site program which is designed to avoid production of unused inventory, the DMS program's

goal is to have sufficient inventory to offset the next 7 years of transportation projects and, at a minimum, have those assets be 5 years old at the time of NCDOT permitting. DMS is designed to develop and hold inventory levels sufficient to address the NCDOT's transportation plans and, consequently, the vast majority of DMS assets were ordered by NCDOT based on projected impacts of specific transportation projects. Tables 6 and 7 below summarize the current unused inventory at DMS. The HQP assets are listed separately as they are allowed to be used across larger service areas. Note the tables below list the DMS inventories in mitigation credits rather than feet or acres.

Table 6. Net remaining non-HQP DMS credits (includes transferred NCDOT surplus)

River Basin	Stream Credits	Riparian Credits	Nonriparian Credits	Coastal Marsh Credits
Broad	55,258.00	17.72	0.00	0.00
Cape Fear	139,344.28	476.93	835.21	13.35
Catawba	58,992.05	28.50	0.72	0.00
Chowan	14,257.39	50.19	16.41	0.00
French Broad	29,418.82	9.76	0.00	0.00
Hiwassee	7,299.90	3.25	0.00	0.00
Little Tennessee	15,688.30	41.26	6.97	0.00
Lumber	9,388.20	30.97	480.01	0.00
Neuse	122,823.16	1,013.52	2,098.01	0.00
New	15,901.10	20.60	2.38	0.00
Pasquotank	6,244.00	414.89	663.59	36.44
Roanoke	38,019.60	162.82	625.65	0.00
Savannah	1,949.80	0.00	0.00	0.00
Tar-Pamlico	23,593.60	196.71	267.42	37.55
Watauga	1,872.00	0.00	0.00	0.00
White Oak	7,764.90	13.86	52.27	3.46
Yadkin	183,011.21	230.71	1.02	0.00
Grand Total	730,826.31	2,711.70	5,049.67	90.80
Statewide ILF Totals	57,364.66	128.71	81.57	3.46
NCDOT ILF Totals	673,461.65	2,582.99	4,968.09	87.34

Table 7. Net remaining HQP credits by ecoregion (NCDOT Stream and Wetland ILF Program)

Eco-Region	Net Remaining HQP Credits			
	Stream	Riparian	Non-Riparian	Coastal
Central Piedmont	5,694.31	57.130	0.000	0.000
Northern Inner Coastal Plain	2,838.5	117.100	0.000	0.000
Northern Mountains	8,951.8	0.000	0.000	0.000
Northern Outer Coastal Plain	1,470.4	75.164	245.257	0.000
Southern Inner Coastal Plain	27,517.0	730.300	3.880	0.000
Southern Mountains	24,662.2	0.001	0.000	0.000
Southern Outer Coastal Plain	51.5	21.154	147.618	5.483
Southern Piedmont	27,989.4	252.905	0.000	0.000
TOTAL	99,175.1	1,253.755	396.755	5.48

Catalog of Wetland and Stream Mitigation Credits

Appendix I

Complete List of All DMS and NCDOT Stream and Wetland Mitigation Sites



Appendix I. Catalog of Stream and Wetland Compensatory Mitigation Projects

Project Start Date	SITE NAME	NCDOT Project ID	DMS Project ID	Source Agency	Credit Managing Agency	River Basin	Hydrologic Unit Code (HUC)	Stream Restoration	Stream Enhancement I	Stream Enhancement II	Stream Preservation	Riparian Wetland Restoration	Riparian Wetland Creation	Riparian Wetland Enhancement	Riparian Wetland Preservation	Nonriparian Wetland Restoration	Nonriparian Wetland Creation	Nonriparian Wetland Enhancement	Nonriparian Wetland Preservation	Coastal Marsh Restoration	Coastal Marsh Creation	Coastal Marsh Enhancement	Coastal Marsh Preservation
9/1/1982	Company Swamp	WM-008-006	96	NCDOT	DMS	Roanoke	03010107								975.67								
8/1/1991	Whitehall Reserve		419	NCDOT	DMS	Catawba	03050103	0.0	0.0		0.0	0.00	0.00	0.00	0.00	0.00	0.00	0.00	0.00	0.00	0.00	0.00	0.00
12/1/1991	Little NE Creek	WM-067-007		NCDOT	NCDOT	White Oak	03030001					0.28											
12/1/1991	Whalebone Junction	WM-028-007		NCDOT	NCDOT	Pasquotank	03010205														0.90		
4/1/1992	SR-1161 (Tuttle Grove Road)	WM-016-006		NCDOT	NCDOT	White Oak	03030001														0.38		
6/1/1992	Thorofare Bay Bridge	WM-016-005		NCDOT	NCDOT	Tar-Pamlico	03020105														4.45		
7/1/1992	Collington Creek (Bridge 6, Site 3)	WM-028-018		NCDOT	NCDOT	Pasquotank	03010205														0.14	0.63	
7/1/1992	Collington Cut (Bridge 5, Sites 1 and 2)	WM-028-015		NCDOT	NCDOT	Pasquotank	03010205														0.50		
1/1/1993	U-92D	WM-065-007		NCDOT	NCDOT	Cape Fear	03030007						4.50										
1/15/1993	Bryan Boulevard/Horsepen Creek	WM-041-006		NCDOT	NCDOT	Cape Fear	03030002					3.80	24.00	1.90									
2/1/1993	Mildred Woods	WM-033-001	250	NCDOT	DMS	Tar-Pamlico	03020103									368.50			23.00				
2/1/1993	Goshen Swamp	WM-031-002		NCDOT	NCDOT	Cape Fear	03030007					44.40			46.90								
6/20/1993	Sand Shoal (Bogue Sound)	WM-016-003		NCDOT	NCDOT	White Oak	03030001														5.9		
6/30/1993	Cox Farms	WM-007-003		NCDOT	NCDOT	Tar-Pamlico	03020104										1.98						
6/30/1993	Manns Harbor	WM-028-002		NCDOT	NCDOT	Pasquotank	03010205														1.51		
6/30/1993	Pea Island	WM-028-005		NCDOT	NCDOT	Pasquotank	03010205															37.60	
6/30/1993	Pea Island Duck Pond	WM-028-011		NCDOT	NCDOT	Pasquotank	03010205															5.58	
1/15/1994	R-84BA Onsite Wetland	WM-051-005		NCDOT	NCDOT	Neuse	03020201					2.25											
3/1/1994	Long Creek	WM-060-002		NCDOT	NCDOT	Catawba	03050101					39.35											
4/8/1994	Gibson Pond	WM-077-003	143	NCDOT	DMS	Yadkin	03040201								40.20								
6/30/1994	Wellborn	WM-014-002		NCDOT	NCDOT	Yadkin	03040101														6.52		
12/1/1994	Gurley Swamp	WM-040-001		NCDOT	NCDOT	Neuse	03020203					26.92				27.83		26.92					
12/1/1994	Spring Branch	WM-065-001		NCDOT	NCDOT	Cape Fear	03030007					8.00			3.00								
12/1/1994	Tucker Farm	WM-027-003		NCDOT	NCDOT	Pasquotank	03010205					25.10			11.50								
1/1/1995	Casey Tract	WM-027-002		NCDOT	NCDOT	Pasquotank	03010205								6.40		5.50		11.90				
3/1/1995	Mud Creek	WM-045-002	260	NCDOT	DMS	French Broad	06010105							30.00									
3/1/1995	Reed Creek (Weaver Park)	WM-011-001		NCDOT	NCDOT	French Broad	06010105	2,200.0															
6/1/1995	Weeks Site (Bogue Sound)	WM-016-004		NCDOT	NCDOT	White Oak	03020106														3.56		
6/30/1995	Barra Farms I	WM-026-003	23	NCDOT	DMS	Cape Fear	03030005									240.00							
6/30/1995	Dismal Swamp	WM-037-001	117	NCDOT	DMS	Pasquotank	03010205					37.20		20.80		394.00				90.71			
6/30/1995	Mary Thorpe Property	WM-010-016		NCDOT	NCDOT	Lumber	03040207													19.70			
12/1/1995	Ballance Farm	WM-027-001	21	NCDOT	DMS	Pasquotank	03010205					225.00			50.00							36.68	50.00
2/1/1996	Haw's Run	WM-067-003	719	NCDOT	DMS	Cape Fear	03030007					26.00	25.00		171.00	81.60	99.00	11.00					
2/1/1996	South Buffalo Creek	WM-041-009		NCDOT	NCDOT	Cape Fear	03030002					15.53			16.2								
3/1/1996	Pembroke Creek	WM-021-002		NCDOT	NCDOT	Pasquotank	03010205					9.67											
4/1/1996	Lengyel	WM-025-001		NCDOT	NCDOT	Neuse	03020204														7.20		
4/15/1996	Long Swamp	WM-047-002		NCDOT	NCDOT	Lumber	03040203					36.70		111.50									
5/1/1996	Starmount Country Club	WM-041-010		NCDOT	NCDOT	Cape Fear	03030002	5,621.0															
8/1/1996	A-10 Charles McGinnis (South Fork Big Pine Creek)	WM-057-004	92701	NCDOT	DMS	French Broad	06010105	1,100.0															
9/1/1996	Manteo Bypass Bridge	WM-028-003		NCDOT	NCDOT	Pasquotank	03010205														0.13		
12/1/1996	Dale Tract	WM-010-008	106	NCDOT	DMS	Cape Fear	03030005									220.10		17.90					
12/1/1996	Eagle Brunswick	WM-010-009	745	NCDOT	NCDOT	Cape Fear	03030005									164.30		117.70	162.20				
1/1/1997	A-10 Fosson Site (Paint Fork Creek)	WM-057-005	92702	NCDOT	DMS	French Broad	06010105	1,700.0															
2/1/1997	Grimesland Site Phase I	WM-074-001	156	NCDOT	DMS	Tar-Pamlico	03020103						7.94		348.00								
2/15/1997	A-10C	WM-057-006		NCDOT	DMS	French Broad	06010105	5,640.0															
2/15/1997	A-10D UT to Little Laurel Creek	WM-057-007		NCDOT	NCDOT	French Broad	06010105	1,688.0															
3/1/1997	Mallard Creek	WM-060-004	239	NCDOT	DMS	Yadkin	03040105					2.80	6.60										
4/1/1997	Friedburg Marsh	WM-034-001	142	NCDOT	NCDOT	Yadkin	03040101					5.70		3.80									

Appendix I. Catalog of Stream and Wetland Compensatory Mitigation Projects

Project Start Date	SITE NAME	NCDOT Project ID	DMS Project ID	Source Agency	Credit Managing Agency	River Basin	Hydrologic Unit Code (HUC)	Stream Restoration	Stream Enhancement I	Stream Enhancement II	Stream Preservation	Riparian Wetland Restoration	Riparian Wetland Creation	Riparian Wetland Enhancement	Riparian Wetland Preservation	Nonriparian Wetland Restoration	Nonriparian Wetland Creation	Nonriparian Wetland Enhancement	Nonriparian Wetland Preservation	Coastal Marsh Restoration	Coastal Marsh Creation	Coastal Marsh Enhancement	Coastal Marsh Preservation
5/1/1997	Bridge Maintenance Site	WM-066-002		NCDOT	NCDOT	Cape Fear	03030007					4.00	2.40										
6/1/1997	Sandy Creek	WM-076-019	321	NCDOT	DMS	Cape Fear	03030003					10.00			2.90								
6/1/1997	Starmount Park (North Buffalo Creek)	WM-041-011		NCDOT	NCDOT	Cape Fear	03030002	5,100.0															
6/1/1997	A-10 Barnhill Tract (Little Ivy Creek)	WM-057-002	92651	NCDOT	DMS	French Broad	06010105	1,200.0															
6/1/1997	A-10 Brigmon FDP (Paint Fork Creek)	WM-057-003	92700	NCDOT	NCDOT	French Broad	06010105	5,175.0															
10/1/1997	Wiggins Mill	WM-098-001		NCDOT	NCDOT	Neuse	03020203	7,020.0				84		5.3									
11/1/1997	UT to Laxon Creek (Carp Site)	WM-095-002	92705	NCDOT	DMS	New	05050001	638.0															
1/1/1998	Abbott	WM-007-002	9	NCDOT	DMS	Neuse	03020201	584.0															
1/1/1998	Kerr Avenue	WM-065-010		NCDOT	NCDOT	Cape Fear	03030007								47.30								
2/1/1998	Bethal Church	WM-099-002		NCDOT	NCDOT	Yadkin	03040101	850.0				2.21	0.44										
2/1/1998	Dowd Dairy Farm	WM-009-002	119	NCDOT	DMS	Cape Fear	03030005					12.05			566.42								
3/1/1998	Deer Creek	WM-016-002		NCDOT	NCDOT	White Oak	03030001																
3/1/1998	Mashoes Road	WM-028-001	718	NCDOT	DMS	Pasquotank	03010205									8.00			106.88	13.10			253.84
5/1/1998	White's Store	WM-028-008		NCDOT	NCDOT	Pasquotank	03010205													0.21			
6/1/1998	McIntyre	WM-010-010	244	NCDOT	DMS	Cape Fear	03030005					12.30								14.00		77.10	
6/1/1998	Rowell Branch	WM-010-011	746	NCDOT	NCDOT	Cape Fear	03030005	2,640.0				16.10											
9/1/1998	UT to Peak Creek (Bare Site)	WM-005-002	92704	NCDOT	DMS	New	05050001	728.0															
10/22/1998	NEU CON MBI Tull Woolen	WM-054-008	92643	NCDOT	DMS	Neuse	03020202									25.00			125.00				
1/15/1999	Bear Creek	WM-054-010	25	NCDOT	DMS	Neuse	03020202					93.13		34.00	297.00								
2/1/1999	Cedar Point	WM-016-001		NCDOT	NCDOT	White Oak	03030001													0.78			12.92
2/1/1999	Croatan Wetland Mitigation Bank	WM-025-003	97051	NCDOT	DMS	Neuse	03020204	14,187.0	37,144.0		9,653.0	143.71		475.76	112.62	1,308.52		1,514.37	264.02				
2/2/1999	Hornity Swamp Creek		180	DMS	DMS	Neuse	03020203	2,160.0															
2/15/1999	Afton Run	WM-013-003	10	NCDOT	DMS	Yadkin	03040105	1,013.0															
2/24/1999	Payne Dairy		279	DMS	DMS	Catawba	03050101	5,177.0	470.0	1,350.0					6.40								
3/1/1999	Benson Grove	WM-051-003		NCDOT	NCDOT	Neuse	03020201					31.41			10.10								
3/1/1999	Crescent Road	WM-054-003		NCDOT	NCDOT	Neuse	03020202	2,009.0				3.35											
3/1/1999	White Oak Creek	WM-051-004	417	NCDOT	DMS	Neuse	03020201					2.79	3.73	1.50	18.62								
3/1/1999	Roanoke Island Visitor Center	WM-028-006		NCDOT	NCDOT	Pasquotank	03010205					0.11	1.66										
3/1/1999	Scranton Creek Bridge	WM-048-003		NCDOT	NCDOT	Tar-Pamlico	03020104					0.60											
3/15/1999	NEU CON MBI Casy King	WM-054-007	92642	NCDOT	DMS	Neuse	03020202									25.00							
5/5/1999	Stone Mountain		364	DMS	DMS	Yadkin	03040101	6,754.0		984.0	1,445.0		2.09										
6/30/1999	Kentwood Park		205	DMS	DMS	Neuse	03020201	965.0	338.0	0.0													
7/1/1999	ABC (G)	WM-092-001	6	NCDOT	DMS	Tar-Pamlico	03020104	0.0		2,375.0						101.63	9.24		27.57				
7/15/1999	Howell Woods		183	DMS	DMS	Neuse	03020201			5,253.0		43.40	3.40	71.30	0.00								
8/25/1999	Sturgeon City (Phase I)		366	DMS	DMS	White Oak	03030001					0.35								2.69			
9/1/1999	Meat Camp Creek (Miller Site)	WM-095-003	92706	NCDOT	DMS	New	05050001	652.0															
9/15/1999	Obids Creek (Wild Site)	WM-005-003	92708	NCDOT	DMS	New	05050001	1,819.0															
10/6/1999	Brush Creek		54	DMS	DMS	New	05050001	950.0	1,200.0	700.0	938.0												
11/1/1999	Laxon Creek (Racey Site)	WM-095-004	92707	NCDOT	DMS	New	05050001	1,160.0															
12/1/1999	Corbett Tract and Strip (Murraysville)	WM-065-012		NCDOT	NCDOT	Cape Fear	03030007								26.00				467.00				
12/15/1999	Sussman's Park (Mile Run Creek)	WM-041-012		NCDOT	NCDOT	Cape Fear	03030002	1,000.0															
1/1/2000	Deaton Site	WM-076-018	110	NCDOT	DMS	Cape Fear	03030003	4,117.0	60.0	1,100.0													
1/1/2000	Hammock's State Park		163	DMS	DMS	White Oak	03020106													0.30			
1/1/2000	Big and Little Warrior Creek (AH&W)	WM-098-004	92715	NCDOT	DMS	Yadkin	03040101	16,550.0															
2/1/2000	Grimesland (Phase II)	WM-074-006	155	NCDOT	DMS	Tar-Pamlico	03020103						48.80										
2/15/2000	NEU CON MBI Westbrook	WM-051-007	262	NCDOT	DMS	Neuse	03020201	5,414.0				10.00			50.00	50.00			20.00				

Appendix I. Catalog of Stream and Wetland Compensatory Mitigation Projects

Project Start Date	SITE NAME	NCDOT Project ID	DMS Project ID	Source Agency	Credit Managing Agency	River Basin	Hydrologic Unit Code (HUC)	Stream Restoration	Stream Enhancement I	Stream Enhancement II	Stream Preservation	Riparian Wetland Restoration	Riparian Wetland Creation	Riparian Wetland Enhancement	Riparian Wetland Preservation	Nonriparian Wetland Restoration	Nonriparian Wetland Creation	Nonriparian Wetland Enhancement	Nonriparian Wetland Preservation	Coastal Marsh Restoration	Coastal Marsh Creation	Coastal Marsh Enhancement	Coastal Marsh Preservation
3/1/2000	Alexander Site	WM-040-002		NCDOT	NCDOT	Neuse	03020203									18.50	0.90		2.00				
3/1/2000	Tulula	WM-038-001	390	NCDOT	DMS	Little Tennessee	06010204	8,759.0			5,128.0	80.90			1.70				139.40				
3/1/2000	Sawmill	WM-025-002		NCDOT	NCDOT	Neuse	03020204					2.10	0.28								0.48	0.18	0.24
4/1/2000	Black and Decker Road	WM-026-001		NCDOT	NCDOT	Cape Fear	03030004	173.0															
4/1/2000	Marks Creek	WM-092-011		NCDOT	NCDOT	Neuse	03020201	3,247.0				3.33		13.00									
4/1/2000	Southwest Creek	WM-054-001		NCDOT	NCDOT	Neuse	03020202								43.10								
4/5/2000	Price Park		291	DMS	DMS	Cape Fear	03030002	1,758.0															
7/1/2000	UT to Miller Branch	WM-018-002		NCDOT	NCDOT	Catawba	03050102	434.3															
7/20/2000	Finley McMillan	WM-067-004	133	NCDOT	DMS	Cape Fear	03030007								102.00				398.00				
8/17/2000	Pott Creek		285	DMS	DMS	Catawba	03050102	3,500.0				5.45	31.32	0.76	0.36								
8/21/2000	North River		271	DMS	DMS	White Oak	03020106									250.00							
10/1/2000	Key Branch	WM-004-002	206	NCDOT	DMS	Yadkin	03040104	6,183.0				81.50			5.60								
12/1/2000	Cashiers Stream	WM-050-001		NCDOT	NCDOT	Little Tennessee	06010203	948.0															
12/1/2000	Cooke Road Connector (Michael's Branch)	WM-001-002		NCDOT	NCDOT	Cape Fear	03030002	780.0															
12/8/2000	Homestead/Second Creek		179	NCDOT	DMS	Yadkin	03040102	4,000.0				14.60	42.20	2.80	5.50								
12/18/2000	UT to Cape Fear River	WM-043-001		NCDOT	NCDOT	Cape Fear	03030004	608.0															
1/1/2001	Caviness	WM-076-005	73	NCDOT	DMS	Cape Fear	03030003	2,840.0															
1/1/2001	Clear Creek		92	DMS	DMS	French Broad	06010105	1,196.0															
1/1/2001	High Vista		175	DMS	DMS	French Broad	06010105	3,548.0	0.0		379.0												
1/1/2001	A-10 Middle Fork Creek (Phillips-Willis)	WM-057-001	92703	NCDOT	DMS	French Broad	06010105	5,213.0															
1/3/2001	Smith/Austin Creek (G)		343	DMS	DMS	Neuse	03020201	6,178.0	3,982.0	794.0													
2/1/2001	UT to Raccoon Branch	WM-044-005		NCDOT	NCDOT	French Broad	06010106	714.0															
3/1/2001	Greene Street Bridge	WM-074-003		NCDOT	NCDOT	Tar-Pamlico	03020103					1.75	0.40	0.00									
3/1/2001	Lucia NC-16 Onsite Catawba River	WM-036-001		NCDOT	NCDOT	Catawba	03050101	738.0															
3/1/2001	UT to Little Crane Creek	WM-053-001		NCDOT	NCDOT	Cape Fear	03030004	980.0															
3/15/2001	Neu-Con MBI (Marston)	WM-052-005	265	NCDOT	DMS	Neuse	03020204	6,416.0				30.00		8.60	128.50								
3/15/2001	NEU CON MBI Preservation 01	WM-051-008	92641	NCDOT	DMS	Neuse	03020201												230.00				
3/20/2001	Wike Property (Lyle Creek)		423	DMS	DMS	Catawba	03050101	2,067.0			820.0												
4/1/2001	County Site	WM-065-005		NCDOT	NCDOT	Cape Fear	03030007					1.90											
4/1/2001	McRae Street	WM-065-011		NCDOT	NCDOT	Cape Fear	03030007					1.10		12.70									
4/1/2001	Sanford Bypass BA UT Bull Run (Sites 22 & 14)	WM-053-003		NCDOT	NCDOT	Cape Fear	03030004	144.0															
4/1/2001	Smith Creek	WM-065-004		NCDOT	NCDOT	Cape Fear	03030007					11.70			16.00								
4/1/2001	Goose Creek (Greene site)		92709	NCDOT	DMS	Yadkin	03040105			0.0													
4/1/2001	Waste Treatment	WM-065-003		NCDOT	NCDOT	Cape Fear	03030007						0.80										
4/16/2001	Deep Creek (Harding)		111	NCDOT	DMS	Yadkin	03040101	5,500.0				30.40	12.10										
4/16/2001	Fisher River Mit. Bank (Ring FDP)		135	NCDOT	DMS	Yadkin	03040101				4,752.0	25.50	8.10	0.91									
4/25/2001	Beaver Creek		28	DMS	DMS	Yadkin	03040101	4,266.0															
5/15/2001	Rich Fork FDP (Bodenheimer-Parker)	WM-029-007	303	NCDOT	DMS	Yadkin	03040103	2,913.0				17.10	3.90	0.31	0.18								
5/16/2001	Bear Swamp Creek		27	DMS	DMS	Tar-Pamlico	03020101	1,460.0															
5/29/2001	Brown Branch		53	DMS	DMS	Catawba	03050101	5,107.0		120.0													
6/30/2001	Spring Valley Park	WM-041-003	354	NCDOT	DMS	Cape Fear	03030002	916.0	493.0														
6/30/2001	I-2402 Greensboro Bypass On-site Stream Mitigation Sites	WM-041-033		NCDOT	NCDOT	Cape Fear	03030003	6,577.0															
7/1/2001	R-0967CA UT to Big Meadow Creek	WM-084-001		NCDOT	NCDOT	Yadkin	03040104	318.0															
7/24/2001	Jumping Run Creek		199	DMS	DMS	Cape Fear	03030004	4,270.0				57.72											
7/24/2001	Jumping Run Creek		200	DMS	DMS	White Oak	03020106					3.00											

Appendix I. Catalog of Stream and Wetland Compensatory Mitigation Projects

Project Start Date	SITE NAME	NCDOT Project ID	DMS Project ID	Source Agency	Credit Managing Agency	River Basin	Hydrologic Unit Code (HUC)	Stream Restoration	Stream Enhancement I	Stream Enhancement II	Stream Preservation	Riparian Wetland Restoration	Riparian Wetland Creation	Riparian Wetland Enhancement	Riparian Wetland Preservation	Nonriparian Wetland Restoration	Nonriparian Wetland Creation	Nonriparian Wetland Enhancement	Nonriparian Wetland Preservation	Coastal Marsh Restoration	Coastal Marsh Creation	Coastal Marsh Enhancement	Coastal Marsh Preservation	
9/25/2001	UT to South Fork Creek (Hadley-Newlin)		435	DMS	DMS	Cape Fear	03030002	5,761.0																
9/25/2001	Little Beaver Creek		221	DMS	DMS	Cape Fear	03030002	3,721.0			1,631.0		0.64		1.98									
11/1/2001	Stillhouse Creek (G)		363	DMS	DMS	Neuse	03020201	978.0	155.0															
11/1/2001	Royal Oak Swamp Bridge	WM-010-004		NCDOT	NCDOT	Lumber	03040207					0.29												
11/27/2001	Benbow Park		29	DMS	DMS	Cape Fear	03030002	1,878.0																
11/27/2001	Brown Bark Park		52	DMS	DMS	Cape Fear	03030002	2,812.0	0.0															
11/27/2001	Bugaboo Creek		56	DMS	DMS	Yadkin	03040101	6,242.0	249.0															
11/27/2001	Gillespie Golf Course		144	DMS	DMS	Cape Fear	03030002	2,695.0	0.0	1,705.0														
11/27/2001	Hillsdale Park		177	DMS	DMS	Cape Fear	03030002	2,775.0	2,019.0	0.0														
12/1/2001	Rocky Hock Creek Bridge	WM-021-006		NCDOT	NCDOT	Chowan	03010203					0.60												
1/1/2002	Gregory Site	WM-042-003	153	NCDOT	DMS	Tar-Pamlico	03020102	6,500.0				75.00												
1/1/2002	Warrior Creek		412	DMS	DMS	Yadkin	03040101	9,907.0	488.0															
1/1/2002	Smith Mill Run	WM-096-004		NCDOT	NCDOT	Neuse	03020201	731.0																
1/22/2002	Cato		72	DMS	DMS	Yadkin	03040105	2,444.0																
2/1/2002	Indian Creek	WM-055-003		NCDOT	NCDOT	Catawba	03050102		480.0		2,080.0		0.80	1.70	4.50									
2/1/2002	UT to Dixon Branch Site #23	WM-060-011		NCDOT	NCDOT	Catawba	03050103	525.0																
2/1/2002	UT to Dixon Branch Site #24	WM-060-012		NCDOT	NCDOT	Catawba	03050103	1,020.0																
3/1/2002	Mud Creek Tributary (R-2214A)	WM-045-003		NCDOT	NCDOT	French Broad	06010105	464.0																
3/1/2002	UT to Adams Creek (site 24)	WM-013-006		NCDOT	NCDOT	Yadkin	03040105	525.0																
3/1/2002	UT to Cold Water Creek (site 23)	WM-013-005		NCDOT	NCDOT	Yadkin	03040105	718.0																
3/16/2002	Cane Creek		69	DMS	DMS	Cape Fear	03030002	2,187.0		70.0	136.0													
3/26/2002	Sandy Creek		322	DMS	DMS	Cape Fear	03030002			2,461.0		2.23												
3/26/2002	Wells Creek		414	DMS	DMS	Cape Fear	03030002	3,539.0	2,139.0	1,213.0														
3/31/2002	UT No. 9 to Bull Run (Site 1)	WM-041-024		NCDOT	NCDOT	Cape Fear	03030003	198.0																
4/1/2002	Blue Tract	WM-063-001	40	NCDOT	DMS	Cape Fear	03030004				4,200.0													
4/1/2002	Freedom Park		141	DMS	DMS	Catawba	03050103	4,392.0																
4/1/2002	Kings Creek		208	DMS	DMS	French Broad	06010105	1,781.0																
4/1/2002	Open Springs	WM-076-023	275	NCDOT	DMS	Cape Fear	03030003	3,494.0		2,724.0														
4/1/2002	Privateer Farms	WM-026-005	293	NCDOT	DMS	Cape Fear	03030005	34,005.0				402.50		25.00										
4/1/2002	Shepherd's Tree	WM-049-003	333	NCDOT	DMS	Yadkin	03040102	10,734.0				46.48	12.28											
4/1/2002	Sleepy Creek	WM-054-011	340	NCDOT	DMS	Neuse	03020202					83.70		39.20	380.00									
4/1/2002	Sparta Bog		349	NCDOT	DMS	New	05050001																	
4/1/2002	Irish Buffalo Creek (site 12)	WM-013-008		NCDOT	NCDOT	Yadkin	03040105	563.0																
4/1/2002	R-1030BB Site IV Wetland	WM-096-005		NCDOT	NCDOT	Neuse	03020203					0.24												
4/1/2002	Stumpy Point	WM-028-004		NCDOT	NCDOT	Pasquotank	03010205																	
4/1/2002	UT to Cold Water Creek (site 20)	WM-013-007		NCDOT	NCDOT	Yadkin	03040105	130.0																
4/1/2002	UT to Thomas Pond Site #9	WM-060-007		NCDOT	NCDOT	Catawba	03050101	1,148.0																
4/16/2002	McIntyre Creek @ Hornets Nest Park		243	DMS	DMS	Catawba	03050101	5,129.0					0.00											
4/23/2002	Silas Creek		335	DMS	DMS	Yadkin	03040101	4,334.0																
4/26/2002	Bird Island		92209	DMS	DMS	Lumber	03040207				0.0													
5/1/2002	Reedy Branch		301	DMS	DMS	Cape Fear	03030002	3,125.0																
5/1/2002	South Fork	WM-018-003	346	NCDOT	DMS	Catawba	03050102	9,058.0	1,273.0	3,384.0														
5/2/2002	Ellerbee Creek (G) Hillandale		127	DMS	DMS	Neuse	03020201	5,663.0																
5/14/2002	Purlear Creek		294	DMS	DMS	Yadkin	03040101	10,916.0				0.00		0.00										
5/17/2002	Upper UT to Cane Creek (Picard)		395	DMS	DMS	Cape Fear	03030002	6,691.0																
5/17/2002	UT to South Fork Creek (Stephens)		405	DMS	DMS	Cape Fear	03030002	3,994.0		2,724.0	0.0	0.72		0.14										

Appendix I. Catalog of Stream and Wetland Compensatory Mitigation Projects

Project Start Date	SITE NAME	NCDOT Project ID	DMS Project ID	Source Agency	Credit Managing Agency	River Basin	Hydrologic Unit Code (HUC)	Stream Restoration	Stream Enhancement I	Stream Enhancement II	Stream Preservation	Riparian Wetland Restoration	Riparian Wetland Creation	Riparian Wetland Enhancement	Riparian Wetland Preservation	Nonriparian Wetland Restoration	Nonriparian Wetland Creation	Nonriparian Wetland Enhancement	Nonriparian Wetland Preservation	Coastal Marsh Restoration	Coastal Marsh Creation	Coastal Marsh Enhancement	Coastal Marsh Preservation
5/22/2002	Forest Hills		139	DMS	DMS	Cape Fear	03030002	2,922.0															
5/30/2002	Whitelace Ck* (G)		420	DMS	DMS	Neuse	03020202		2,803.0	2,379.0				2.77	7.03								
6/12/2002	Snow Creek		344	DMS	DMS	Roanoke	03010103	3,800.0	0.0	993.0													
6/14/2002	Mary's Creek		241	DMS	DMS	Cape Fear	03030002	2,082.0															
7/1/2002	Prestonwood G.C.		289	DMS	DMS	Neuse	03020201	4,123.0															
7/1/2002	Suck Creek		368	DMS	DMS	Cape Fear	03030003	2,889.0															
7/1/2002	Raccoon Branch	WM-044-004		NCDOT	NCDOT	French Broad	06010106	1,225.0															
7/17/2002	Irwin Creek Whitehurst Road		192	DMS	DMS	Catawba	03050103		980.0														
7/18/2002	Wake Forest C.C.		409	DMS	DMS	Neuse	03020201	2,376.0		926.0													
9/1/2002	Myrick Pond	WM-077-002		NCDOT	NCDOT	Lumber	03040203	817.0				2.45											
9/1/2002	R-2231 UT to Big Mountain Creek Site 3	WM-062-002		NCDOT	NCDOT	Yadkin	03040104	423.0															
9/1/2002	R-2231 UT to Big Mountain Creek Site 6	WM-062-003		NCDOT	NCDOT	Yadkin	03040104	253.0															
10/1/2002	Purlear Creek II		295	DMS	DMS	Yadkin	03040101	2,582.0							2.35	0.74							
11/1/2002	Grove Creek	WM-031-001	158	NCDOT	DMS	Cape Fear	03030007					2.80	9.70	4.30	352.00	7.40				3.60			
11/21/2002	Louisburg (UT to Tar River)		234	DMS	DMS	Tar-Pamlico	03020101	1,929.0	0.0														
12/1/2002	Back Creek Church	WM-060-001	17	NCDOT	DMS	Yadkin	03040105	3,993.0				0.44		3.20									
12/1/2002	Cross Creek		105	DMS	DMS	Cape Fear	03030004	2,090.0															
12/1/2002	US 64 Bypass Mitigation Site	WM-089-002		NCDOT	NCDOT	Pasquotank	03010205									6.13							
12/1/2002	UT to Town Creek Site 5	WM-080-004		NCDOT	NCDOT	Yadkin	03040103	1,276.0															
12/1/2002	UT to Town Creek Site 8	WM-080-006		NCDOT	NCDOT	Yadkin	03040103	415.0															
12/16/2002	Billy's Creek (G)		36	DMS	DMS	Tar-Pamlico	03020101	2,101.0	0.0														
12/31/2002	Knobs Creek		209	DMS	DMS	Pasquotank	03010205								22.02								
1/1/2003	Hendersonville Wetlands		173	DMS	DMS	French Broad	06010105								1.75								
1/1/2003	Juniper Bay	WM-078-006	201	NCDOT	DMS	Lumber	03040203									536.40				11.80			
1/1/2003	R-2911 onsite UT to Third Creek	WM-049-004		NCDOT	NCDOT	Yadkin	03040102	180.0															
1/1/2003	South Ellerbee Creek	WM-032-001		NCDOT	NCDOT	Neuse	03020201	2,684.0															
2/1/2003	Clayhill Farm	WM-052-003	91	NCDOT	DMS	White Oak	03020106	8,125.0		367.0	1,235.0	32.20											
2/1/2003	Little River Bridge	WM-063-004		NCDOT	NCDOT	Cape Fear	03030004					5.97			8.40								
2/10/2003	Chavis Park		87	DMS	DMS	Neuse	03020201	2,210.0															
2/10/2003	Little River		226	DMS	DMS	Cape Fear	03030004			3,593.0	210.0				54.80	48.70							
2/15/2003	Stella Bridge	WM-067-006		NCDOT	NCDOT	White Oak	03030001													46.00		1.70	
2/17/2003	R-2568B Onsite (UT to Rich Fork)	WM-029-006		NCDOT	NCDOT	Yadkin	03040103	315.0															
2/28/2003	Tick Creek (Condoret Tract)	WM-019-003	379	NCDOT	DMS	Cape Fear	03030003	2,946.0		1,254.0													
2/28/2003	Haw River Swamp I		92238	DMS	DMS	Cape Fear	03030002					12.00											
2/28/2003	UT to Hickory Creek (Site 28)	WM-041-026		NCDOT	NCDOT	Cape Fear	03030003	935.0															
2/28/2003	UT to Hickory Creek (Sites 7 and 17)	WM-041-025		NCDOT	NCDOT	Cape Fear	03030003	952.0															
3/1/2003	Daniels Farm		92269	DMS	DMS	Tar-Pamlico	03020101																31.70
3/1/2003	Elk Shoals RFP*		126	DMS	DMS	Catawba	03050101	4,813.0	563.0														
3/1/2003	Jeffreys Warehouse	WM-096-003		NCDOT	NCDOT	Neuse	03020201	3,731.0				3.66			12.36	16.23							
3/1/2003	New Hope Creek Bridge	WM-032-002		NCDOT	NCDOT	Cape Fear	03030002					3.04											
3/1/2003	Setman Branch	WM-080-007		NCDOT	NCDOT	Yadkin	03040102	180.4															
3/1/2003	Third Street (3rd Street)	WM-065-006		NCDOT	NCDOT	Cape Fear	03030007						1.20										
3/1/2003	UT to Dry Branch	WM-099-007		NCDOT	NCDOT	Yadkin	03040101	220.0															
3/1/2003	Zack's Fork Ck RFP*		432	DMS	DMS	Catawba	03050101	3,765.0															
3/6/2003	Hanging Rock Creek (A3)		165	NCDOT	DMS	Watauga	06010103	2,789.0	0.0														
3/14/2003	Carper-Harris Wetland		94719	DMS	DMS	Pasquotank	03010205																
3/31/2003	UT to Bear Creek	WM-019-001		NCDOT	NCDOT	Cape Fear	03030003	2,399.0		940.0													

Appendix I. Catalog of Stream and Wetland Compensatory Mitigation Projects

Project Start Date	SITE NAME	NCDOT Project ID	DMS Project ID	Source Agency	Credit Managing Agency	River Basin	Hydrologic Unit Code (HUC)	Stream Restoration	Stream Enhancement I	Stream Enhancement II	Stream Preservation	Riparian Wetland Restoration	Riparian Wetland Creation	Riparian Wetland Enhancement	Riparian Wetland Preservation	Nonriparian Wetland Restoration	Nonriparian Wetland Creation	Nonriparian Wetland Enhancement	Nonriparian Wetland Preservation	Coastal Marsh Restoration	Coastal Marsh Creation	Coastal Marsh Enhancement	Coastal Marsh Preservation
4/1/2003	Campbell Creek	WM-007-001		NCDOT	NCDOT	Tar-Pamlico	03020104										2.25		4.98		1.33		18.11
4/2/2003	UT to Little Coharie Creek (Roseboro Site)		314	NCDOT	DMS	Cape Fear	03030006	1,590.0	0.0	700.0													
4/21/2003	Clayton Bypass/UT to Little Creek (Site 5)	WM-051-006		NCDOT	NCDOT	Neuse	03020201	410.0															
6/1/2003	UT to Barnes Creek (Hurley Site)	WM-062-001	397	NCDOT	DMS	Yadkin	03040103	3,916.0						4.44									
6/5/2003	Eno River Wilderness		92147	DMS	DMS	Neuse	03020201				21,671.0								0.00				0.00
6/15/2003	UT to Howe Creek (Military Cutoff)	WM-065-014		NCDOT	NCDOT	White Oak	03030001	456.0															
6/24/2003	UT to Cedar Creek (R-2610 Site 5)	WM-019-010		NCDOT	NCDOT	Cape Fear	03030003	217.0															
6/24/2003	UT to Deep River (R-2610 Site 1)	WM-019-009		NCDOT	NCDOT	Cape Fear	03030003	36.0															
7/21/2003	Haw River-Cone Swamp-Phillips		92150	DMS	DMS	Cape Fear	03030002				3,628.0								0.00				0.00
7/21/2003	Drowning Creek		92163	DMS	DMS	Lumber	03040203				15,679.0								0.00				0.00
7/22/2003	Bull Farm		57	NCDOT	DMS	Cape Fear	03030006															2.18	
7/22/2003	Camp Lejeune USMC		66	NCDOT	DMS	White Oak	03030001					0.00										0.00	
7/22/2003	Great Dismal Swamp		151	NCDOT	DMS	Pasquotank	03010205									106.00							
7/22/2003	Huskanaw Swamp		184	NCDOT	DMS	Tar-Pamlico	03020103							23.60									
7/22/2003	Little Sugar Creek I		228	NCDOT	DMS	Catawba	03050103				0.00												
7/22/2003	New-Con MBI (Westbrook)		262	NCDOT	DMS	Neuse	03020201	5,414.0			10.00				50.00	50.00						20.00	
7/22/2003	New-Con MBI (Nahunta)		263	NCDOT	DMS	Neuse	03020203	10,670.0			97.50			0.50		11.50			0.40			31.50	
7/22/2003	New-Con MBI (Alexander)		264	NCDOT	DMS	Neuse	03020203										18.50	0.90				2.00	
7/22/2003	Speight Branch		351	NCDOT	DMS	Neuse	03020201						1.00	1.22	19.00								
7/22/2003	Starmount Forest CC		360	NCDOT	DMS	Cape Fear	03030002	0.0															
7/22/2003	Scuppernong River Mitigation Bank		730	NCDOT	DMS	Pasquotank	03010205										11.35						19.00
7/22/2003	Bogue Sound (Weeks Property)		731	NCDOT	DMS	White Oak	03020106																0.18
7/22/2003	Little Grassy Creek	WM-039-001	224	NCDOT	DMS	Roanoke	03010102			8,633.0	13,915.0												
7/22/2003	Rocky Branch		308	NCDOT	DMS	Yadkin	03040102	3,761.0	206.0	173.0		0.00											
7/22/2003	Rhodes Pond		92344	DMS	DMS	Cape Fear	03030006				9,000.0											20.00	0.00
7/22/2003	New-Con MBI (Valentine)		92644	NCDOT	DMS	Neuse	03020203									386.00							114.00
7/22/2003	Stonebridge		365	NCDOT	DMS	Cape Fear	03030003	6,120.0															
7/22/2003	UT to Rocky River (Smith Tract)	WM-019-002	402	NCDOT	DMS	Cape Fear	03030003	1,111.0	168.0	827.0													
8/1/2003	Plemmons/Kirkpatrick	WM-057-026	92607	NCDOT	DMS	French Broad	06010105	600.0															
8/8/2003	Dupont Forest		92176	DMS	DMS	French Broad	06010105				16,280.0								0.00				0.00
9/1/2003	Caldwell Station		63	DMS	DMS	Catawba	03050101				3,132.1					4.23							
9/1/2003	Bradley Creek	WM-065-013		NCDOT	NCDOT	White Oak	03030001																0.19
9/22/2003	Cheviot Hills*		88	DMS	DMS	Neuse	03020201	100.4	541.6	2,129.3	1,853.2	0.00						0.00					0.00
9/30/2003	Len's Knob & Little Mountain		92158	DMS	DMS	Yadkin	03040101				42,000.0				0.00								0.00
10/8/2003	City Pond		90	NCDOT	DMS	Yadkin	03040201	9,869.0	705.0														
10/27/2003	Watts Property		413	DMS	DMS	Pasquotank	03010205	750.0				0.00				20.40							
11/11/2003	Big & Little Rock Creek Bruchon		92132	DMS	DMS	French Broad	06010108				5,550.0				0.00								0.00
12/2/2003	Meredell Farm Site		247	NCDOT	DMS	Cape Fear	03030003	3,717.0	1,771.0	2,648.0													3,619.0
12/9/2003	Lost Bridge		92178	DMS	DMS	Little Tennessee	06010202				10,650.0				0.00								0.00
12/12/2003	Mingo Tract		92156	DMS	DMS	Yadkin	03040101				29,024.0				0.00								0.00
12/13/2003	Town Creek (I-2511CB Site 5)	WM-080-008		NCDOT	NCDOT	Yadkin	03040103	1,375.0															
12/16/2003	Pott Creek II		286	DMS	DMS	Catawba	03050102	10,119.0															

Appendix I. Catalog of Stream and Wetland Compensatory Mitigation Projects

Project Start Date	SITE NAME	NCDOT Project ID	DMS Project ID	Source Agency	Credit Managing Agency	River Basin	Hydrologic Unit Code (HUC)	Stream Restoration	Stream Enhancement I	Stream Enhancement II	Stream Preservation	Riparian Wetland Restoration	Riparian Wetland Creation	Riparian Wetland Enhancement	Riparian Wetland Preservation	Nonriparian Wetland Restoration	Nonriparian Wetland Creation	Nonriparian Wetland Enhancement	Nonriparian Wetland Preservation	Coastal Marsh Restoration	Coastal Marsh Creation	Coastal Marsh Enhancement	Coastal Marsh Preservation
12/16/2003	Eno River-Poplar Ridge (Bunting)		92148	DMS	DMS	Neuse	03020201				3,665.0				0.00				0.00				0.00
12/19/2003	Haw River-Duke Forest		92149	DMS	DMS	Cape Fear	03030002				32,000.0				0.00				0.00				0.00
1/1/2004	Sanford Bypass BB (Site 6)	WM-053-002		NCDOT	NCDOT	Cape Fear	03030004	1,734.0															
1/5/2004	Rankin Tract		92167	DMS	DMS	Catawba	03050101				18,300.0				20.00				0.00				0.00
1/15/2004	Needmore Tract		92179	DMS	DMS	Little Tennessee	06010202				96,446.0				8.23				0.00				0.00
1/16/2004	Paschal GC (Richland Ck) (G)		276	DMS	DMS	Neuse	03020201	2,919.0	0.0										0.00				0.00
1/25/2004	Mill Branch	WM-024-001	251	NCDOT	DMS	Lumber	03040206	3,327.0			1,750.0				37.30								
1/31/2004	UT #3 to Reddicks Creek (Site 3)	WM-041-027		NCDOT	NCDOT	Cape Fear	03030003	692.0															
2/1/2004	Dula Thorofare at Bishop Site		65	NCDOT	DMS	Yadkin	03040104	2,730.0	1,871.0	480.0	6,660.0	3.10	0.85	2.30									
2/1/2004	Lambert Tract-Uwharrie River Bluff		92160	DMS	DMS	Yadkin	03040103				1,467.0				0.00				0.00				0.00
2/15/2004	Woodlyn Way	WM-041-016		NCDOT	NCDOT	Cape Fear	03030003	1,195.0	45.0														
2/16/2004	Goldsboro Housing Authority		145	DMS	DMS	Neuse	03020201		199.0	1,629.0													
2/18/2004	Stallings	WM-052-002	357	NCDOT	DMS	Neuse	03020204																
3/1/2004	UT to Hiwassee River (R-0977A Site 11)	WM-020-001		NCDOT	NCDOT	Hiwassee	06020002	730.0															
3/8/2004	Naked Creek		261	DMS	DMS	Yadkin	03040101	2,590.0															
3/18/2004	Allen Tract		92139	DMS	DMS	Tar-Pamlico	03020101				15,900.0				26.00				0.00				0.00
3/20/2004	Goose Creek (G)		147	DMS	DMS	Neuse	03020201	1,358.0															
3/25/2004	Linville River-White Creek		92166	DMS	DMS	Catawba	03050101				45,827.0				0.00				0.00				0.00
4/1/2004	East Tarboro Canal (G)	WM-033-002	123	NCDOT	DMS	Tar-Pamlico	03020103	2,989.0															
4/1/2004	McCain Property		443	NCDOT	DMS	Yadkin	03040103	2,417.0															
4/1/2004	Three Swamp Site	WM-069-001		NCDOT	NCDOT	Neuse	03020204					4.23	11.99										
4/1/2004	West Fork Goose Creek	WM-069-002		NCDOT	NCDOT	Tar-Pamlico	03020105	134.5															
5/1/2004	Valley Fields Farm	WM-029-001	407	NCDOT	DMS	Yadkin	03040103	9,350.0			9,006.0	3.10	3.80	1.70									
5/5/2004	Tate Farm		372	DMS	DMS	New	05050001	2,003.0	124.0	13,057.0	13,869.0	3.80	3.98						0.02				
6/1/2004	Hall Branch		162	DMS	DMS	Yadkin	03040201				2,412.5				2.48								
6/1/2004	Second Bridge to Oak Island	WM-010-013		NCDOT	NCDOT	Lumber	03040207									0.46			700.00				
6/2/2004	Heath Dairy Road		170	NCDOT	DMS	Yadkin	03040103	7,756.0	960.0		636.0			0.60	1.18								
6/11/2004	Little Table Rock 2		92169	DMS	DMS	French Broad	06010108				6,123.0				0.00				0.00				0.00
6/11/2004	Little Table Rock 1		92177	DMS	DMS	French Broad	06010108				18,368.0				0.00				0.00				0.00
6/18/2004	Five Mile Branch		92185	NCDOT	DMS	Yadkin	03040102		11,849.3		1,425.0	48.00		1.90									
6/23/2004	Newton Tract-White Pines		92151	DMS	DMS	Cape Fear	03030003				1,000.0				0.00				0.00				0.00
7/1/2004	Coddie Creek Tributary (Indian Run)		94	DMS	DMS	Yadkin	03040105	975.0	1,295.0		1,540.0												
7/16/2004	UT to Crooked Creek/Speas Property (G)		434	DMS	DMS	Tar-Pamlico	03020101	2,193.0		295.0	1,918.0				17.09								
7/19/2004	Davis Tract-Yadkin River		92157	DMS	DMS	Yadkin	03040101				4,750.0				0.00				0.00				0.00
7/22/2004	Bailey Fork (EBX)		19	DMS	DMS	Catawba	03050101	6,097.0		9,765.0		12.10	5.30										
7/22/2004	Bailey Fork (WRC)		20	DMS	DMS	Catawba	03050101	5,742.0															
7/22/2004	Cleghorn Creek		93	DMS	DMS	Broad	03050105	5,196.0															
7/22/2004	Haw Branch		167	DMS	DMS	Cape Fear	03030007	10,005.0				37.84											
7/22/2004	Haw River Swamp II		168	DMS	DMS	Cape Fear	03030002					14.70	2.50	18.00									
7/22/2004	Silver Creek		336	DMS	DMS	Catawba	03050101	4,513.0	3,198.0	0.0	1,116.0												
7/22/2004	South Fork Hopper		347	DMS	DMS	Catawba	03050101	7,229.0				5.60	1.40										
7/22/2004	South Muddy Creek		348	DMS	DMS	Catawba	03050101	12,573.0	2,653.0														
7/23/2004	Harper Tract-Swift Creek		92138	DMS	DMS	Tar-Pamlico	03020101				2,300.0				0.00				0.00				0.00
7/23/2004	William O'Neal Tract-Swift Creek		92140	DMS	DMS	Tar-Pamlico	03020101				1,116.0				11.40				0.00				0.00
7/28/2004	Beaver Dam-Drowning Creek II (Rankin Tract)		92164	DMS	DMS	Lumber	03040203				49,901.0				745.00				0.00				0.00

Appendix I. Catalog of Stream and Wetland Compensatory Mitigation Projects

Project Start Date	SITE NAME	NCDOT Project ID	DMS Project ID	Source Agency	Credit Managing Agency	River Basin	Hydrologic Unit Code (HUC)	Stream Restoration	Stream Enhancement I	Stream Enhancement II	Stream Preservation	Riparian Wetland Restoration	Riparian Wetland Creation	Riparian Wetland Enhancement	Riparian Wetland Preservation	Nonriparian Wetland Restoration	Nonriparian Wetland Creation	Nonriparian Wetland Enhancement	Nonriparian Wetland Preservation	Coastal Marsh Restoration	Coastal Marsh Creation	Coastal Marsh Enhancement	Coastal Marsh Preservation	
8/6/2004	Cox Site		99	DMS	DMS	Neuse	03020201	7,292.0		350.0		26.33				16.75								
8/6/2004	Jones Creek		198	DMS	DMS	Yadkin	03040201	3,068.0			5,150.0	29.35		2.70										
8/6/2004	Lick Creek		219	DMS	DMS	Cape Fear	03030004	9,568.0																
8/6/2004	Lowell Mill		236	DMS	DMS	Neuse	03020201	36,875.0																
8/6/2004	McDonald's Pond		242	DMS	DMS	Yadkin	03040201	2,697.0	770.0	0.0	5,800.0	0.00	0.00	21.86	62.60									
8/9/2004	Langley Site-Cypress Creek		92136	DMS	DMS	Tar-Pamlico	03020101				2,180.0								0.00				0.00	
8/24/2004	Wimberley Tract-Nat's Creek		92165	DMS	DMS	Lumber	03040203				3,051.0				3.30				0.00				0.00	
8/27/2004	New River Heights Tract-New River		92173	DMS	DMS	New	05050001				6,782.0				0.00				0.00				0.00	
9/1/2004	Michael Creek Bridge	WM-029-005		NCDOT	NCDOT	Yadkin	03040103	876.0																
9/10/2004	Cat Creek		71	DMS	DMS	Little Tennessee	06010202	3,996.0	2,334.0	2,192.5		6.87		1.42										
9/15/2004	Guthrie Tract-Shelton Creek		92142	DMS	DMS	Tar-Pamlico	03020101				7,850.0				0.00				0.00				0.00	
9/27/2004	Lone Mountain 1 -Phase Two		92168	DMS	DMS	Broad	03050105				450.0				0.00				0.00				0.00	
9/27/2004	Lone Mountain 2 -Phase Two		92171	DMS	DMS	Broad	03050105				8,000.0				0.00				0.00				0.00	
10/9/2004	Sturgeon City (Phase II)		367	DMS	DMS	White Oak	03030001													2.50				
10/12/2004	Carbonton Dam		92268	DMS	DMS	Cape Fear	03030003	90,494.0																
10/12/2004	Wells Tract; Cape Fear River		92153	DMS	DMS	Cape Fear	03030007				2,675.0				90.00				0.00				0.00	
10/15/2004	Stevens Tract-Eno River		92145	DMS	DMS	Neuse	03020201				589.0				0.00				0.20				0.00	
10/19/2004	Lewis Tract; Little River		92161	DMS	DMS	Yadkin	03040104				4,116.0				0.00				0.00				0.00	
10/28/2004	Cashie River-IP-Thunderbolt-Baltimore		92133	DMS	DMS	Roanoke	03010107				11,819.0				305.00				0.00				0.00	
11/11/2004	Old Cove Tract-Green River-Burdett Property		92170	DMS	DMS	Broad	03050105				1,642.0				0.00				0.00				0.00	
11/12/2004	McNair Tract (Turpentine; LLC)-Aycock Creek		92141	DMS	DMS	Tar-Pamlico	03020101				11,700.0				43.00				9.70				0.00	
11/12/2004	Lester Capps Tract-Shocco Creek		92143	DMS	DMS	Tar-Pamlico	03020102				1,506.0				0.00				0.00				0.00	
11/12/2004	Fishing Creek (Capps Tract)		92144	DMS	DMS	Tar-Pamlico	03020102				3,300.0				0.00				0.00				0.00	
12/5/2004	UT to Burdens Creek	WM-032-003		NCDOT	NCDOT	Cape Fear	03030002	261.0																
12/15/2004	Pickler's Bluff		92159	DMS	DMS	Yadkin	03040102				415.0				0.00				0.00				0.00	
12/17/2004	Great Coharie-TNC		92152	DMS	DMS	Cape Fear	03030006				154,660.0				4,000.00				0.00				0.00	
12/19/2004	Perry Property (UT to Pembroke)	WM-021-004	283	NCDOT	DMS	Pasquotank	03010205	2,439.0				14.10			8.35	2.60		1.29	16.97					
12/20/2004	Bishop Tract-Canal Branch		92162	DMS	DMS	Yadkin	03040104				5,728.0				0.00				0.00				0.00	
12/22/2004	Roanoke River-IP-Blue Sky Timber Tract 42-14		92134	DMS	DMS	Roanoke	03010107				36,432.0				523.00				1,254.30				0.00	
12/23/2004	Flat River-Horton Grove		92146	DMS	DMS	Neuse	03020201				25,013.0				0.00				0.00				0.00	
12/28/2004	Sandymush HQP-Progress Energy		92175	DMS	DMS	French Broad	06010105				21,496.0				0.00				0.00				0.00	
12/28/2004	Sandymush HQP Buncombe		92683	DMS	DMS	French Broad	06010105				55,539.0				0.00				0.00				0.00	
12/30/2004	Swift/Sandy Creek A&P Timber		92027	DMS	DMS	Tar-Pamlico	03020101				1,250.0				0.00				0.00				0.00	
1/1/2005	Roquist	WM-008-005	312	NCDOT	DMS	Roanoke	03010107				1,915.1				8.50	36.50			2,518.60					
1/4/2005	Mark's Creek TESC		92248	DMS	DMS	Neuse	03020201				0.0				20.79									
1/7/2005	Lower Cape Fear Umbrella Mitigation Bank (Sneedden) Credit Purchase SFY 2015		96815	DMS	DMS	Cape Fear	03030005					2.75												
1/12/2005	Fishing Creek Sturges		92046	DMS	DMS	Tar-Pamlico	03020102				1,077.0				0.00				0.00				0.00	
1/19/2005	Shocco Creek LLC-Little Shocco Creek		92137	DMS	DMS	Tar-Pamlico	03020102				2,985.0				0.00				0.00				0.00	
1/20/2005	Swift/Sandy Creek Faulkner		92051	DMS	DMS	Tar-Pamlico	03020101				1,000.0				0.00				7.00				0.00	
1/20/2005	Wallace Deer Club (Blanchard Tract)		92154	DMS	DMS	Cape Fear	03030007				2,340.0				26.00				1,034.00				0.00	
1/28/2005	Shelton Creek Tucker-Daniel 1		92030	DMS	DMS	Tar-Pamlico	03020101				2,246.0				0.00				0.00				0.00	

Appendix I. Catalog of Stream and Wetland Compensatory Mitigation Projects

Project Start Date	SITE NAME	NCDOT Project ID	DMS Project ID	Source Agency	Credit Managing Agency	River Basin	Hydrologic Unit Code (HUC)	Stream Restoration	Stream Enhancement I	Stream Enhancement II	Stream Preservation	Riparian Wetland Restoration	Riparian Wetland Creation	Riparian Wetland Enhancement	Riparian Wetland Preservation	Nonriparian Wetland Restoration	Nonriparian Wetland Creation	Nonriparian Wetland Enhancement	Nonriparian Wetland Preservation	Coastal Marsh Restoration	Coastal Marsh Creation	Coastal Marsh Enhancement	Coastal Marsh Preservation
2/1/2005	Bishop Road	WM-048-002	38	NCDOT	DMS	Tar-Pamlico	03020104					1.00			61.70	49.10			319.00	1.10			184.00
2/1/2005	Martin Site/Little Peters Creek Neu-Con Wetland and Stream Restoration Bank (Marston) Credit Purchase SFY 2015	WM-085-003		NCDOT	NCDOT	Roanoke	03010103		720.0														
2/2/2005	Shelton Creek Peterson		96811	DMS	DMS	Neuse	03020204					0.50											
2/7/2005	Fishing Creek Green		92029	DMS	DMS	Tar-Pamlico	03020101		2,555.0						0.00				0.00				0.00
2/25/2005	Big Swamp Bridge	WM-082-006		NCDOT	NCDOT	Cape Fear	03030006					0.06			0.00				0.00				0.00
3/1/2005	Long Branch	WM-041-028		NCDOT	NCDOT	Cape Fear	03030003	1,986.0															
3/1/2005	Osprey Seafood	WM-007-005		NCDOT	NCDOT	Tar-Pamlico	03020104					0.60			3.50								
3/1/2005	UT to Fomey Creek (Stream Site)	WM-055-007		NCDOT	NCDOT	Catawba	03050101	379.0															
3/1/2005	UT to Lineberry Creek Site #1	WM-009-003		NCDOT	NCDOT	Yadkin	03040101	320.0															
3/14/2005	Jacksonville Country Club		194	DMS	DMS	White Oak	03030001	3,109.0		376.0													
3/16/2005	Fishing Creek Edwards 1		92020	DMS	DMS	Tar-Pamlico	03020102		4,756.0						13.20				0.00				0.00
3/16/2005	Little Shocco Creek Speed		92024	DMS	DMS	Tar-Pamlico	03020102		3,800.0						4.00				0.00				0.00
3/23/2005	Shocco Creek Alston 1; 2; 3		92031	DMS	DMS	Tar-Pamlico	03020102		20,680.0						43.00				0.00				0.00
3/29/2005	Fishing Creek IP/Alston		92022	DMS	DMS	Tar-Pamlico	03020102		15,814.0						0.00				0.00				0.00
3/29/2005	Bear Creek (Phillips) / UT to Bear Creek (Phillips)	WM-019-004	92719	NCDOT	DMS	Cape Fear	03030003	2,399.0		940.0													
3/30/2005	Fletcher-Meritor site		138	DMS	DMS	French Broad	06010105	4,265.0				6.70											
4/1/2005	Mayo River & Buffalo Creek Gorrell		92009	DMS	DMS	Roanoke	03010103		2,015.0						0.00				0.00				0.00
4/1/2005	Mayo River Grogan		92010	DMS	DMS	Roanoke	03010103		2,019.0						0.00				0.00				0.00
4/1/2005	Mayo River Hickory Creek Robertson		92011	DMS	DMS	Roanoke	03010103		5,541.0						0.00				0.00				0.00
4/1/2005	Kitty Creek and Wallace Canal on US 264	WM-048-004		NCDOT	NCDOT	Tar-Pamlico	03020105													0.64			
4/3/2005	Sevenmile Creek Camp Chestnut Ridge		92081	DMS	DMS	Neuse	03020201		5,426.0						0.00				0.00				0.00
4/8/2005	Flintrack Farm		440	DMS	DMS	Cape Fear	03030002		5,427.9						31.54				0.19				
4/11/2005	Dutch Buffalo Creek Walker		92116	DMS	DMS	Yadkin	03040105		2,428.0						0.00				0.00				0.00
4/11/2005	Hitchcock Creek McDonald		92118	DMS	DMS	Yadkin	03040201		2,600.0						0.00				0.00				0.00
4/12/2005	Little River Baker		92112	DMS	DMS	Yadkin	03040104		1,079.0						0.00				0.00				0.00
4/12/2005	Northgate Park (Ellerbe) (G)		272	DMS	DMS	Neuse	03020201	867.0	1,247.0														
4/15/2005	Dutch Buffalo Creek Wickliff		92117	DMS	DMS	Yadkin	03040105		180.0						0.00				0.00				0.00
4/15/2005	Elk-Shoals-Methodist Camp		92172	DMS	DMS	New	05050001		3,370.0						0.00				0.00				0.00
4/20/2005	Countyline Creek Mackovic		92014	DMS	DMS	Roanoke	03010104		2,304.0						0.00				0.00				0.00
4/21/2005	Tar River B Harris		92033	DMS	DMS	Tar-Pamlico	03020101		2,685.0						0.90				0.00				0.00
4/22/2005	UT to Lilliput Creek (Hog Branch Ponds)		290	DMS	DMS	Cape Fear	03030005	3,238.0							20.45	7.67		90.36	87.74				
4/27/2005	Tar River Averett		92032	DMS	DMS	Tar-Pamlico	03020101		792.0						0.00				0.00				0.00
4/29/2005	Little Shocco Creek O'Neal		92023	DMS	DMS	Tar-Pamlico	03020102		2,194.0						1.96				0.00				0.00
5/1/2005	Johnson Site (Hunting Creek)		197	NCDOT	DMS	Yadkin	03040102	2,159.0		417.0													
5/3/2005	Swift Creek Watershed Wetlands North Fork Upper Tar River		92249	DMS	DMS	Neuse	03020201								41.42								
5/5/2005	Winslow		92026	DMS	DMS	Tar-Pamlico	03020101		2,800.0						0.00				0.00				0.00
5/11/2005	Barnes Creek Grissom		92106	DMS	DMS	Yadkin	03040103		4,000.0						0.00				0.00				0.00
5/12/2005	Little River Walbourn		92111	DMS	DMS	Yadkin	03040104		2,814.0						0.00				0.00				0.00
5/16/2005	Dutch Second Creek Hill		92107	DMS	DMS	Yadkin	03040103		2,685.0						0.00				0.00				0.00
5/18/2005	Fishing Creek Hall		92041	DMS	DMS	Tar-Pamlico	03020102		9,713.0						115.00				0.00				0.00
5/21/2005	Wallace Deer Club Tract 3-5		92103	DMS	DMS	Cape Fear	03030007		4,760.0						0.00				0.00				0.00

Appendix I. Catalog of Stream and Wetland Compensatory Mitigation Projects

Project Start Date	SITE NAME	NCDOT Project ID	DMS Project ID	Source Agency	Credit Managing Agency	River Basin	Hydrologic Unit Code (HUC)	Stream Restoration	Stream Enhancement I	Stream Enhancement II	Stream Preservation	Riparian Wetland Restoration	Riparian Wetland Creation	Riparian Wetland Enhancement	Riparian Wetland Preservation	Nonriparian Wetland Restoration	Nonriparian Wetland Creation	Nonriparian Wetland Enhancement	Nonriparian Wetland Preservation	Coastal Marsh Restoration	Coastal Marsh Creation	Coastal Marsh Enhancement	Coastal Marsh Preservation
5/21/2005	Eno River Cabe's Ford		92246	DMS	DMS	Neuse	03020201				2,212.0				0.00				0.00				0.00
5/23/2005	Shelton Creek Tucker-Daniel 2		92018	DMS	DMS	Tar-Pamlico	03020101				907.0				0.00				0.00				0.00
5/23/2005	Sandy Creek Parrish		92028	DMS	DMS	Tar-Pamlico	03020101				3,198.0				0.00				0.00				0.00
5/24/2005	Tar River Hodges		92034	DMS	DMS	Tar-Pamlico	03020101				2,075.0				18.00				0.00				0.00
6/10/2005	Little Shocco Creek Tomlinson		92025	DMS	DMS	Tar-Pamlico	03020102				4,616.0				20.94				0.00				0.00
6/22/2005	Nicholis Farm (Troublesome Creek)		441	DMS	DMS	Chowan	03010203				3,726.7				19.90				3.90				
6/28/2005	Little River Parker		92114	DMS	DMS	Yadkin	03040104				2,683.0				0.00				0.00				0.00
7/1/2005	Beaverdam Creek		92217	DMS	DMS	Catawba	03050101	13,003.0	0.0		2,603.0	24.60		3.30									
7/1/2005	Brown Farm		92207	DMS	DMS	Cape Fear	03030002																
7/1/2005	Collins Site		92205	DMS	DMS	Cape Fear	03030002	8,551.0	500.0														
7/1/2005	Conoconnara Swamp		92226	DMS	DMS	Roanoke	03010107	5,050.0								69.00		8.00	71.00				
7/1/2005	Daniels Farm #2		92229	DMS	DMS	Tar-Pamlico	03020101					13.80		4.50	10.30	0.70		0.70	0.10				
7/1/2005	Gatlin Swamp		92228	DMS	DMS	Roanoke	03010107									131.60							
7/1/2005	Glen Raven		92206	DMS	DMS	Cape Fear	03030002	3,108.0	446.0														
7/1/2005	Gray Farm		92219	DMS	DMS	Catawba	03050101	7,694.0															
7/1/2005	Harrell Site		92230	DMS	DMS	Tar-Pamlico	03020101	6,808.0								15.00							
7/1/2005	Modlin Site		92227	DMS	DMS	Roanoke	03010107					38.94											
7/1/2005	Reeds Creek		92220	DMS	DMS	Catawba	03050101					4.20		2.20									
7/1/2005	Silver Creek-Conway		92218	DMS	DMS	Catawba	03050101	4,427.0		48.0	52.0												
7/1/2005	Simpson Wetland		92234	DMS	DMS	Tar-Pamlico	03020104									30.00							
7/1/2005	Tariton Swamp		92211	DMS	DMS	Cape Fear	03030004	3,443.0	596.0		339.0	6.60		2.80									
7/7/2005	Little River Cochran		92113	DMS	DMS	Yadkin	03040104				1,495.0				0.00				0.00				0.00
7/8/2005	Crowther North South Yadkin River		92245	DMS	DMS	Yadkin	03040102				2,434.0				22.90				0.00				0.00
7/15/2005	Little Shocco Creek Wheless		92047	DMS	DMS	Tar-Pamlico	03020102				598.0				4.00				0.00				0.00
7/29/2005	Tar River Roy Crews		92073	DMS	DMS	Tar-Pamlico	03020101				667.0				0.00				0.00				0.00
8/1/2005	Bold Run Creek (G)		439	DMS	DMS	Neuse	03020201	1,628.0		0.0													
8/1/2005	Mile Branch (R-0609IA Site 6)	WM-041-017		NCDOT	NCDOT	Cape Fear	03030003	659.0															
8/1/2005	UT to Mud Creek (B-3856)	WM-045-004		NCDOT	NCDOT	French Broad	06010105	380.0															
8/3/2005	Tar River Pories		92080	DMS	DMS	Tar-Pamlico	03020103				2,719.0				0.00				0.00				0.00
8/5/2005	Deep - Horse Creek McKean		92120	DMS	DMS	Lumber	03040203				6,500.0				0.00				0.00				0.00
8/12/2005	Hoffman Forest Bank		92258	DMS	DMS	White Oak	03030001									12.00							
8/12/2005	Hoffman Forest Bank		92259	DMS	DMS	White Oak	03030001									38.00							
8/15/2005	Dismal Swamp Full-Delivery		118	DMS	DMS	Pasquotank	03010205					180.00				275.00							
8/16/2005	North Pacolet Childers		92128	DMS	DMS	Broad	03050105				2,812.0				0.00				0.00				0.00
8/23/2005	Tar River Betty Crews		92066	DMS	DMS	Tar-Pamlico	03020101				2,740.0				0.00				0.00				0.00
9/1/2005	Briles		47	DMS	DMS	Yadkin	03040103	1,394.0	1,156.0	0.0	508.0			0.00									
9/9/2005	Reedy Creek Johnston		92050	DMS	DMS	Tar-Pamlico	03020102				5,491.0				0.00				0.00				0.00
9/12/2005	Brook	WM-052-001	92333	NCDOT	DMS	Neuse	03020204		1,850.0														
9/14/2005	Skyuka Creek (Luthi)		92130	DMS	DMS	Broad	03050105				1,993.0				0.00				0.00				0.00
9/20/2005	Mocassin Creek (G)		258	DMS	DMS	Neuse	03020203				1,576.3				65.14								
9/20/2005	River Bend		307	NCDOT	DMS	Roanoke	03010104				7,011.1				11.16								
9/20/2005	Rowan Branch		317	NCDOT	DMS	Cape Fear	03030006				590.0				54.10				11.40				
9/26/2005	Hyco Lake Bessemer		92015	DMS	DMS	Roanoke	03010104				12,333.0				0.00				0.00				0.00
9/29/2005	Elizabeth City State BMP		125	DMS	DMS	Pasquotank	03010205		0.0														
10/1/2005	Middle Fork Creek (Site I)	WM-057-016		NCDOT	NCDOT	French Broad	06010105	787.0															
10/13/2005	Haw River Tract		169	DMS	DMS	Cape Fear	03030002				1,381.0				23.09								
10/13/2005	UT to Sandy Creek (Williams Tract)		403	NCDOT	DMS	Cape Fear	03030003	2,505.0															
10/17/2005	Blounts Creek		92210	DMS	DMS	Cape Fear	03030004				0.0												
10/19/2005	Chapel Creek		77	DMS	DMS	Cape Fear	03030002	961.0	0.0	330.0													
10/19/2005	Morgan Creek Floodplain		258	DMS	DMS	Cape Fear	03030002					14.37			5.61								

Appendix I. Catalog of Stream and Wetland Compensatory Mitigation Projects

Project Start Date	SITE NAME	NCDOT Project ID	DMS Project ID	Source Agency	Credit Managing Agency	River Basin	Hydrologic Unit Code (HUC)	Stream Restoration	Stream Enhancement I	Stream Enhancement II	Stream Preservation	Riparian Wetland Restoration	Riparian Wetland Creation	Riparian Wetland Enhancement	Riparian Wetland Preservation	Nonriparian Wetland Restoration	Nonriparian Wetland Creation	Nonriparian Wetland Enhancement	Nonriparian Wetland Preservation	Coastal Marsh Restoration	Coastal Marsh Creation	Coastal Marsh Enhancement	Coastal Marsh Preservation
11/1/2005	Bailey Branch (Site D)	WM-057-011		NCDOT	NCDOT	French Broad	06010105	262.0															
11/1/2005	Middle Fork Creek (Site E)	WM-057-012		NCDOT	NCDOT	French Broad	06010105	833.0			273.0												
11/1/2005	UT to Middle Fork Creek (Site F)	WM-057-013		NCDOT	NCDOT	French Broad	06010105	226.0															
11/7/2005	Charles Creek		79	DMS	DMS	Pasquotank	03010205					1.13	0.54										
11/23/2005	Melrose Mountain Tobey		92127	DMS	DMS	Broad	03050105				10,293.0				0.00				0.00				0.00
12/1/2005	Bridge No. 3 over Ruin Creek	WM-091-002		NCDOT	NCDOT	Tar-Pamlico	03020101																
12/1/2005	Holland Creek (Site M)	WM-057-020		NCDOT	NCDOT	French Broad	06010105	276.0															
12/1/2005	Marsh Swamp Bridge on NC 561	WM-042-002		NCDOT	NCDOT	Tar-Pamlico	03020102					0.48											
12/1/2005	Pig Basket Creek	WM-064-001		NCDOT	NCDOT	Tar-Pamlico	03020101		90.0			0.24											
12/1/2005	Turkey Branch (Site J)	WM-057-017		NCDOT	NCDOT	French Broad	06010105	692.0															
12/1/2005	UT to Middle Fork Creek (Site B)	WM-057-009		NCDOT	NCDOT	French Broad	06010105	184.0															
12/1/2005	UT to Middle Fork Creek (Site C)	WM-057-010		NCDOT	NCDOT	French Broad	06010105	259.0															
12/2/2005	Fishing Creek Shearin		92044	DMS	DMS	Tar-Pamlico	03020102				3,943.0				28.00				0.00				0.00
12/2/2005	Lloyd Site		92327	DMS	DMS	White Oak	03030001	5,858.0				13.90				1.65							
12/7/2005	White Pines Hearn		93861	DMS	DMS	Cape Fear	03030003				5,120.0				0.00				0.00				0.00
12/13/2005	Tar River Pitts		92072	DMS	DMS	Tar-Pamlico	03020101				2,615.0				0.00				0.00				0.00
12/21/2005	Shocco Creek D Davis		92057	DMS	DMS	Tar-Pamlico	03020102				739.0				1.20				0.45				0.00
12/21/2005	Tar River Smitherman		92077	DMS	DMS	Tar-Pamlico	03020101				1,108.0				0.00				1.59				0.00
12/21/2005	New Hope Creek Penny		92089	DMS	DMS	Cape Fear	03030002				1,360.0				0.00				0.00				0.00
12/31/2005	Tar River Sherman		92075	DMS	DMS	Tar-Pamlico	03020101				1,495.0				0.00				0.00				0.00
1/1/2006	Ivy Gap Branch (Site N)	WM-057-021		NCDOT	NCDOT	French Broad	06010105	581.0			49.0												
1/4/2006	Crowns West		92329	DMS	DMS	White Oak	03030001	3,835.0															
1/9/2006	Cane Creek		92325	DMS	DMS	Roanoke	03010104	9,669.0	5,414.0	2,867.0	986.0												
1/10/2006	Mason Farm		92328	DMS	DMS	Tar-Pamlico	03020105					16.00				20.00							
1/23/2006	Tar River Sherman 2		92076	DMS	DMS	Tar-Pamlico	03020101				1,700.0				0.00				0.00				0.00
1/23/2006	Mill Creek Steele		92105	DMS	DMS	Yadkin	03040101				1,069.0				0.00				0.00				0.00
	Drowning Creek IP Forest Investments		92121	DMS	DMS	Lumber	03040203				11,385.0				0.00				0.00				0.00
1/31/2006	Shelton Creek Thorp/Morton		92056	DMS	DMS	Tar-Pamlico	03020101				4,388.0				0.00				0.00				0.00
1/31/2006	Uwharrie River Bingham		92108	DMS	DMS	Yadkin	03040103				41,080.0				0.00				0.00				0.00
1/31/2006	Mud Lick Creek (Thomas Site)	WM-019-008	93482	NCDOT	DMS	Cape Fear	03030003	3,730.0															
2/1/2006	Cedar Creek Perry		92035	DMS	DMS	Tar-Pamlico	03020101				12,415.0				0.00				0.00				0.00
2/1/2006	Dula Thorofare at Camp Branch		92350	NCDOT	DMS	Yadkin	03040105	2,313.0		0.0	7,210.0				5.11								
2/2/2006	Shocco Creek Gupton		92059	DMS	DMS	Tar-Pamlico	03020102				4,083.0				0.00				0.00				0.00
2/10/2006	Hoppers Creek - Melton Farm		92251	DMS	DMS	Catawba	03050101	2,293.0		1,257.0	1,071.0	1.23	0.33										
2/10/2006	Muddy Creek(Randolph/Duncan Properties)		737	DMS	DMS	Catawba	03050101	2,787.0															
2/13/2006	Tar River Dean		92069	DMS	DMS	Tar-Pamlico	03020101				5,459.0				0.00				0.00				0.00
2/21/2006	Trout Cove Branch		388	DMS	DMS	Hiwassee	06020002	3,791.0															
2/21/2006	Oakley Crossroads (G)		273	DMS	DMS	Tar-Pamlico	03020103	3,789.0		329.0					1.13								
2/23/2006	Shelton Creek Slaughter		92055	DMS	DMS	Tar-Pamlico	03020101				2,400.0				0.00				0.00				0.00
2/28/2006	Sharpe Wetland Preservation		92241	DMS	DMS	Cape Fear	03030002				890.3				6.09								
3/1/2006	Middle Fork Creek (Site A)	WM-057-008		NCDOT	NCDOT	French Broad	06010105	239.0			160.0												
3/1/2006	Middle Fork Creek (Site A)	WM-057-008		NCDOT	NCDOT	French Broad	06010105		238.0														
3/1/2006	Haw River Bouchard		92316	DMS	DMS	Cape Fear	03030002				122.9				13.33								
3/1/2006	UT to Sycamore Creek	WM-035-002		NCDOT	NCDOT	Tar-Pamlico	03020101		465.0														
3/3/2006	Big Harris Creek		739	DMS	DMS	Broad	03050105	12,272.0	20,614.5	0.0	85.0	0.00											

Appendix I. Catalog of Stream and Wetland Compensatory Mitigation Projects

Project Start Date	SITE NAME	NCDOT Project ID	DMS Project ID	Source Agency	Credit Managing Agency	River Basin	Hydrologic Unit Code (HUC)	Stream Restoration	Stream Enhancement I	Stream Enhancement II	Stream Preservation	Riparian Wetland Restoration	Riparian Wetland Creation	Riparian Wetland Enhancement	Riparian Wetland Preservation	Nonriparian Wetland Restoration	Nonriparian Wetland Creation	Nonriparian Wetland Enhancement	Nonriparian Wetland Preservation	Coastal Marsh Restoration	Coastal Marsh Creation	Coastal Marsh Enhancement	Coastal Marsh Preservation
3/6/2006	Harris Farm-HQP	WM-035-001	433	NCDOT	DMS	Tar-Pamlico	03020101				51,736.0				197.00								
3/7/2006	Big Pond Bay Gardner		92101	DMS	DMS	Cape Fear	03030006				0.0				0.00				20.00				0.00
3/11/2006	Gunpowder Creek	WM-014-001		NCDOT	NCDOT	Catawba	03050101	315.0															
3/31/2006	Fishing Creek Capps Forest		92039	DMS	DMS	Tar-Pamlico	03020102				1,540.0				0.00				0.00				0.00
4/1/2006	Hydro Site (UT to Bald Creek Site 7)	WM-100-012		NCDOT	NCDOT	French Broad	06010108	443.0															
4/4/2006	Little Troublesome		749	DMS	DMS	Cape Fear	03030002	2,188.0			1,081.0			1.90	4.50								
4/5/2006	Moore Property	WM-051-001	725	NCDOT	DMS	Neuse	03020201					44.55											
4/7/2006	Chowan River Harrell		92017	DMS	DMS	Chowan	03010203				2,100.0				90.00				0.00				0.00
4/7/2006	Deep River M. Paschal		92093	DMS	DMS	Cape Fear	03030003				5,137.0				1.00				0.00				0.00
4/7/2006	Glendon Slate Creek Paschal		92096	DMS	DMS	Cape Fear	03030003				1,324.0				0.00				0.00				0.00
4/11/2006	Helms		172	NCDOT	DMS	Yadkin	03040105			1,344.5	192.0			0.40									
4/24/2006	Tar River Oakley		92071	DMS	DMS	Tar-Pamlico	03020101				1,150.0				0.00				0.00				0.00
5/2/2006	Armstrong Property		92487	DMS	DMS	Tar-Pamlico	03020104	2,200.0				20.00											
5/2/2006	Floogie Site		92486	DMS	DMS	Roanoke	03010107	10,827.0				25.19											
5/12/2006	Green River Boyer		92124	DMS	DMS	Broad	03050105				1,318.0				0.00				0.00				0.00
5/17/2006	Greenbrier Creek		671	DMS	DMS	Cape Fear	03030003		4,461.0		4,455.0				6.93								
5/22/2006	Ken-Cox (Millstone Creek)		204	NCDOT	DMS	Cape Fear	03030003	678.0		2,010.0				1.20									
5/22/2006	Sandy Mush (Phase II)		732	DMS	DMS	French Broad	06010105			66,702.0	16,791.0												
5/23/2006	Uwharrie River Whatley		92110	DMS	DMS	Yadkin	03040103				2,500.0				0.00				0.00				0.00
5/24/2006	UT to Uwharrie		847	DMS	DMS	Yadkin	03040103	5,945.0	901.0	163.0	722.0				0.93								
6/1/2006	Ivy Gap Branch (Site Q)	WM-057-024		NCDOT	NCDOT	French Broad	06010105				765.0												
6/1/2006	Phipps Creek (Site 11)	WM-100-006		NCDOT	NCDOT	French Broad	06010108	279.0															
6/2/2006	Bowman Site		44	NCDOT	DMS	Cape Fear	03030003		530.0	1,046.0	290.0												
6/2/2006	Mill Creek (formerly Uwharrie Heritage)		253	NCDOT	DMS	Yadkin	03040103	983.0	1,710.0	4,348.0	14,848.0												
6/2/2006	Green River Ward		92125	DMS	DMS	Broad	03050105				1,973.0				0.00				0.00				0.00
6/8/2006	Suther (Dutch Buffalo Creek)	WM-013-004	370	NCDOT	DMS	Yadkin	03040105	608.0		3,004.0	3,583.0	7.29		4.26	1.67								
6/12/2006	UT to Crab Creek		857	DMS	DMS	New	05050001	4,198.0		496.0	2,067.0	7.90	0.20	3.70	4.70								
6/14/2006	Meadowbranch (Fivemile Branch)		92351	DMS	DMS	Lumber	03040203					2.88		44.78	0.87								
6/16/2006	Cane Creek (FD)		92521	DMS	DMS	Broad	03050105	4,163.6		5,708.0	1,506.0												
6/16/2006	Holly Grove		92523	DMS	DMS	Cape Fear	03030002	13,298.0			4,830.0	2,402.0		1.08									
6/19/2006	Blockhouse Creek		92516	DMS	DMS	Broad	03050105	4,798.0	931.0		436.0												
6/19/2006	Ellington Branch		92520	DMS	DMS	Roanoke	03010106	5,062.0															
6/19/2006	Logan Creek		92515	DMS	DMS	Savannah	03060101	3,444.0	1,038.0	341.0	287.0							0.00					
6/19/2006	Pinch Gut Tributary		92518	DMS	DMS	Roanoke	03010103	10,525.0			292.0												
6/19/2006	Puzzle Creek		92522	DMS	DMS	Broad	03050105	4,753.0	320.0														
6/19/2006	Thompson's Fork and Tributary		92524	DMS	DMS	Catawba	03050101	4,662.5	390.0		356.0												
6/20/2006	Newfound Creek		92497	DMS	DMS	French Broad	06010105	5,719.0	2,525.0	1,490.0													
6/21/2006	Brown Marsh Swamp		92517	DMS	DMS	Lumber	03040204	5,004.0				5.00											
6/26/2006	Anderson Swamp		92526	DMS	DMS	Tar-Pamlico	03020102									11.40	6.20	1.60					
6/26/2006	Dog Bite Creek		92533	DMS	DMS	French Broad	06010108	2,574.0	1,114.0														
6/26/2006	Little White Oak Creek		92534	DMS	DMS	Broad	03050105	18,290.0															
6/26/2006	Morgan Creek (French Broad)		92531	DMS	DMS	French Broad	06010106	3,699.5	558.0			0.97		0.35									
6/26/2006	Tributary to Reedy Fork Creek		92528	DMS	DMS	Cape Fear	03030002	6,905.0		418.0													
6/27/2006	Beaverdam Swamp		92530	DMS	DMS	Cape Fear	03030004	10,084.0			290.0	8.00		2.00									
6/28/2006	Big Cedar Creek		92532	DMS	DMS	Yadkin	03040105	11,103.0			1,171.0				539.0								
6/28/2006	Morgan Creek		92527	DMS	DMS	Broad	03050105	7,799.0	1,797.0	1,629.0	7,491.0												
6/29/2006	Lewis Creek		733	DMS	DMS	French Broad	06010105	1,750.0															
7/1/2006	Bald Creek Site 1	WM-100-002		NCDOT	NCDOT	French Broad	06010108		874.5														
7/1/2006	Bald Creek Site 3	WM-100-003		NCDOT	NCDOT	French Broad	06010108		493.5														
7/1/2006	Bald Creek Site 4	WM-100-004		NCDOT	NCDOT	French Broad	06010108	814.0															

Appendix I. Catalog of Stream and Wetland Compensatory Mitigation Projects

Project Start Date	SITE NAME	NCDOT Project ID	DMS Project ID	Source Agency	Credit Managing Agency	River Basin	Hydrologic Unit Code (HUC)	Stream Restoration	Stream Enhancement I	Stream Enhancement II	Stream Preservation	Riparian Wetland Restoration	Riparian Wetland Creation	Riparian Wetland Enhancement	Riparian Wetland Preservation	Nonriparian Wetland Restoration	Nonriparian Wetland Creation	Nonriparian Wetland Enhancement	Nonriparian Wetland Preservation	Coastal Marsh Restoration	Coastal Marsh Creation	Coastal Marsh Enhancement	Coastal Marsh Preservation
7/1/2006	Bald Creek Site 8	WM-100-005		NCDOT	NCDOT	French Broad	06010108	1,007.0															
7/1/2006	Broad River Greenway		92882	NCDOT	DMS	Broad	03050105				20,356.0				2.80				0.00				0.00
7/5/2006	Beaverdam Creek and Trib (Parker Site)		92586	DMS	DMS	Yadkin	03040105	3,014.0															
7/5/2006	Davis Branch		92543	DMS	DMS	Yadkin	03040105	2,258.0	1,229.0	396.0	766.0												
7/5/2006	Sandy Creek Mullen		92052	DMS	DMS	Tar-Pamlico	03020101				2,065.0			0.00					0.00				0.00
7/7/2006	601 North Property		92546	DMS	DMS	Yadkin	03040105	3,036.0															
7/7/2006	Wolf Pond		92551	DMS	DMS	Yadkin	03040105	4,513.0															
7/13/2006	Dye Branch II Stream Restoration		92255	DMS	DMS	Yadkin	03040105	3,685.0															
7/15/2006	Eno River Penny		92082	DMS	DMS	Neuse	03020201				4,320.0				1.15				0.00				0.00
7/17/2006	Cutawhiskie creek		92547	DMS	DMS	Chowan	03010204	2,899.0			2,593.0	11.57		1.10									
7/17/2006	Jarmans Oak		92550	DMS	DMS	White Oak	03030001	6,418.0		1,205.0		9.74		6.10									
7/18/2006	601 West Property		92545	DMS	DMS	Yadkin	03040105	4,532.0															
7/18/2006	Duke Swamp		92544	DMS	DMS	Chowan	03010203	5,382.0				10.70		8.20									
7/18/2006	Farrar Dairy		92552	DMS	DMS	Cape Fear	03030004	11,561.0		180.0	1,240.0	43.80		22.12					45.93				
7/18/2006	Glade Creek		854	DMS	DMS	New	05050001	2,738.0			784.0			0.26									
7/18/2006	Plum Creek		92549	DMS	DMS	Lumber	03040207	0.0							67.58		7.33						
7/18/2006	Powell Property		92548	DMS	DMS	Chowan	03010203	3,340.0				48.20											
7/21/2006	Stricker Branch		92556	DMS	DMS	Yadkin	03040105	2,889.0															
7/21/2006	Timberlake (Great Dismal Swamp)		92557	DMS	DMS	Pasquotank	03010205	5,000.0															
8/1/2006	Smith Creek Bridge	WM-092-028		NCDOT	NCDOT	Neuse	03020201																
8/1/2006	Tranters Creek Wetland	WM-007-010		NCDOT	NCDOT	Tar-Pamlico	03020103					0.14		0.45									
8/11/2006	Swift/Sandy Creek Young		92054	DMS	DMS	Tar-Pamlico	03020101				5,710.0			44.60					0.00				0.00
8/18/2006	Adkins Branch (Phase II) (G)	WM-054-002		7	NCDOT	DMS	Neuse	03020202	7,533.0														
9/19/2006	McGowan Creek		92604	DMS	DMS	Neuse	03020201				4,878.5			21.45									
10/29/2006	Six Mile Creek	WM-060-014		NCDOT	NCDOT	Catawba	03050103	40.0															
10/30/2006	Bear Creek (Phillips Tract)		26	NCDOT	DMS	Cape Fear	03030003	4,061.0		0.0													
11/1/2006	Little Alamance Creek (Burlington Park)		92372	DMS	DMS	Cape Fear	03030002	282.0	1,621.0	825.0													
11/13/2006	UT to Jumping Run Creek		92345	DMS	DMS	Cape Fear	03030004	7,318.0	1,935.0			59.80		2.60		11.11							
11/19/2006	North Muddy Creek		92611	DMS	DMS	Catawba	03050101	3,974.0	337.0	336.0	3,313.0	11.40		3.70	2.50	2.60							
11/24/2006	UT Bear Creek (Weaver/McLeod property) (G)		92347	DMS	DMS	Cape Fear	03030003	4,551.0						0.39									
1/1/2007	UT Howell Branch (NSD Site 5)	WM-096-010		NCDOT	NCDOT	Neuse	03020201	561.0															
1/1/2007	UT Smith Mill Run (NSD Site 4)	WM-096-009		NCDOT	NCDOT	Neuse	03020201	1,083.0															
1/17/2007	UT to Bald Creek		92596	DMS	DMS	French Broad	06010108	1,401.0	472.0	2,635.0	839.0			1.23									
2/5/2007	Buffalo Creek		92603	DMS	DMS	Neuse	03020201				6,698.3												
2/19/2007	Morgan Creek (Bolin Stewardship Tract)		92240	DMS	DMS	Cape Fear	03030002				4,396.8												
2/26/2007	Wildcat Branch		92508	DMS	DMS	Cape Fear	03030004				5,733.0			26.00									
2/28/2007	UT to Hauser Creek		92471	DMS	DMS	Yadkin	03040101	2,350.0			93.0			108.0									
3/1/2007	McKee Creek		92573	DMS	DMS	Yadkin	03040105	1,505.0	1,078.0	2,988.0													
3/1/2007	Three Mile Creek		92664	DMS	DMS	French Broad	06010108	5,673.0	618.0	875.0	6,811.0	2.50		2.30									
3/5/2007	Elk Branch		92665	DMS	DMS	French Broad	06010108	2,288.0	871.0														
3/5/2007	Sink Hole Creek		92663	DMS	DMS	French Broad	06010108	4,574.0			1,145.0												
3/13/2007	Badin Inn		92666	DMS	DMS	Yadkin	03040104	4,174.0															
3/13/2007	Jordan Creek		92614	DMS	DMS	Cape Fear	03030002				9,067.0												
3/27/2007	UT to West Fork Deep River	WM-041-002	442	NCDOT	DMS	Cape Fear	03030003			2,000.0	1,962.0												
3/27/2007	UT to Haw River		747	DMS	DMS	Cape Fear	03030002			10,597.5	1,848.0												
3/29/2007	UT to Back Creek		92598	DMS	DMS	Cape Fear	03030002				3,615.0												
3/30/2007	Fishing Creek Capps Farm		92038	DMS	DMS	Tar-Pamlico	03020102				3,773.0				2.00				0.00				0.00

Appendix i. Catalog of Stream and Wetland Compensatory Mitigation Projects

Project Start Date	SITE NAME	NCDOT Project ID	DMS Project ID	Source Agency	Credit Managing Agency	River Basin	Hydrologic Unit Code (HUC)	Stream Restoration	Stream Enhancement I	Stream Enhancement II	Stream Preservation	Riparian Wetland Restoration	Riparian Wetland Creation	Riparian Wetland Enhancement	Riparian Wetland Preservation	Nonriparian Wetland Restoration	Nonriparian Wetland Creation	Nonriparian Wetland Enhancement	Nonriparian Wetland Preservation	Coastal Marsh Restoration	Coastal Marsh Creation	Coastal Marsh Enhancement	Coastal Marsh Preservation		
3/30/2007	Fisher River Fisher Peak		92558	DMS	DMS	Yadkin	03040101				10,879.0				0.00				0.00				0.00		
4/12/2007	SALT (Sandhill Area Land Trust)		92675	NCDOT	DMS	Cape Fear	03030004									0.00		0.00	0.00						
5/1/2007	Bridge 21 on NC 210 over N.E. Cape Fear	WM-071-003		NCDOT	NCDOT	Cape Fear	03030007					0.95													
5/3/2007	Deep River Jordan		92092	DMS	DMS	Cape Fear	03030003				12,503.0				0.00				0.00					0.00	
7/13/2007	Little Pine Creek II		856	DMS	DMS	New	05050001	3,131.0						1.20	4.42										
7/13/2007	Glade Creek II		92343	DMS	DMS	New	05050001	1,432.0	1,020.0	0.0	129.0	0.16		0.00	0.84										
7/17/2007	UT Rocky River - Harris Road Middle		92383	DMS	DMS	Yadkin	03040105	2,615.0					8.20												
8/6/2007	WRC Bowlin-Peak Creek		92608	NCDOT	DMS	New	05050001	0.0	0.0																
8/15/2007	Deep River Hanson		92091	DMS	DMS	Cape Fear	03030003				2,505.0				0.00				0.00					0.00	
10/5/2007	Brock Mill Pond		49	NCDOT	DMS	Neuse	03020204				3,400.0				109.00										
10/9/2007	New Hope Creek Mortgage & Realty		92088	DMS	DMS	Cape Fear	03030002				705.0				0.00				0.00					0.00	
10/9/2007	Uwharrie River Cochran		92109	DMS	DMS	Yadkin	03040103				2,648.0				0.00				0.00					0.00	
11/1/2007	Ut to Muddy Creek (R-2606A Site CF-16)	WM-076-014		NCDOT	NCDOT	Cape Fear	03030003	1,230.0							1.00										
11/18/2007	Clarks Creek		92762	DMS	DMS	Yadkin	03040104				7,844.0														
11/18/2007	Columbus Swamp		92760	DMS	DMS	Lumber	03040203					33.00		2.50											
11/18/2007	East Buffalo Creek		92763	DMS	DMS	Little Tennessee	06010204	509.0	375.0	2,080.0	8,474.0														
11/18/2007	Goodman Property		92761	DMS	DMS	Neuse	03020202	4,396.0			3,205.0														
11/18/2007	Little River Farm		92759	DMS	DMS	Yadkin	03040104	515.0		11,029.0	2,409.0														
11/18/2007	Rockwell Pastures		92758	DMS	DMS	Yadkin	03040104	10,851.0	1,137.0	5,304.0						1.70									
11/18/2007	Snowbird Tributaries		92764	DMS	DMS	Little Tennessee	06010204	467.0		171.0	7,387.0														
1/1/2008	Packing House Road	WM-007-011		NCDOT	NCDOT	Tar-Pamlico	03020104					0.10													
1/1/2008	UT to Haw (Beckom)		92694	DMS	DMS	Cape Fear	03030002			2,200.0	1,465.0			1.75	0.05										
1/1/2008	UT to North Deep Creek Site #6	WM-099-006		NCDOT	NCDOT	Yadkin	03040101	77.0																	
1/25/2008	UT to Haw (Gwynn)		92753	DMS	DMS	Cape Fear	03030002			2,428.0					0.30										
2/1/2008	Middlesex	WM-064-002		NCDOT	NCDOT	Neuse	03020203	20.0			3,900.0														
2/1/2008	Talecris	WM-051-010		NCDOT	NCDOT	Neuse	03020201		1,160.0									1.00							
2/4/2008	Sandy Creek - Charles Williams (G)		80	NCDOT	DMS	Cape Fear	03030003		1,850.0					2.20											
2/11/2008	Upper South Hominy Creek		92632	DMS	DMS	French Broad	06010105	1,994.0	522.0	2,342.0	1,093.0			1.11	0.24										
2/26/2008	Martins Creek II		92633	DMS	DMS	Hiwassee	06020002	3,407.5	832.1	1,474.5	21,327.0	5.17		1.61											
3/1/2008	Banks School Road Stream (UT to Falling Creek) (Site 1)	WM-054-004		NCDOT	NCDOT	Neuse	03020202	2,393.0				3.90													
3/5/2008	UT to Martins Creek (Contreras)		92766	DMS	DMS	Hiwassee	06020002	3,330.0	1,286.0	1,910.5				0.30											
5/1/2008	Banks School Road Wetland (Site 2)	WM-054-005		NCDOT	NCDOT	Neuse	03020202	286.0				0.68		2.07	3.92										
5/1/2008	Shallott Road Extension / Charles Branch	WM-010-015		NCDOT	NCDOT	Lumber	03040207	95.0	630.0			0.94													
5/1/2008	Sunset Beach Bridge	WM-010-005		NCDOT	NCDOT	Lumber	03040207														2.84				
6/1/2008	Daniel Street Extension	WM-033-003		NCDOT	NCDOT	Tar-Pamlico	03020103					0.86													
8/1/2008	New Hope Creek Trinity School		92090	DMS	DMS	Cape Fear	03030002				975.0				0.00				0.00					0.00	
8/15/2008	Bobs Creek		92879	DMS	DMS	Catawba	03050101	912.0	236.0	420.0	6,775.0			0.00	0.35										
8/22/2008	Neighbors Br./ Waiton Crawley Br.		92872	DMS	DMS	Catawba	03050101	2,436.0	163.0	1,926.0	3,271.0	0.52		1.62	1.29										
8/22/2008	Shadrack Creek		92916	DMS	DMS	Catawba	03050101	1,353.0	6,922.0	228.0	3,835.0			0.53											
9/1/2008	Tommys Road (R-2554BA Site 8)	WM-096-006		NCDOT	NCDOT	Neuse	03020201	61.0			691.0	0.11			2.37										

Appendix I. Catalog of Stream and Wetland Compensatory Mitigation Projects

Project Start Date	SITE NAME	NCDOT Project ID	DMS Project ID	Source Agency	Credit Managing Agency	River Basin	Hydrologic Unit Code (HUC)	Stream Restoration	Stream Enhancement I	Stream Enhancement II	Stream Preservation	Riparian Wetland Restoration	Riparian Wetland Creation	Riparian Wetland Enhancement	Riparian Wetland Preservation	Nonriparian Wetland Restoration	Nonriparian Wetland Creation	Nonriparian Wetland Enhancement	Nonriparian Wetland Preservation	Coastal Marsh Restoration	Coastal Marsh Creation	Coastal Marsh Enhancement	Coastal Marsh Preservation
9/1/2008	UT Clarke Creek		92500	DMS	DMS	Yadkin	03040105		2,847.0	308.0	1,051.0	1.02	0.14	0.17	0.13								
9/9/2008	UT to Altamahaw		92837	DMS	DMS	Cape Fear	03030002			1,477.0				0.03									
10/1/2008	Candiff Creek		92767	DMS	DMS	Yadkin	03040101	4,081.0	265.0	1,492.0	1,200.0												
11/3/2008	Wells Creek #2		92688	DMS	DMS	Cape Fear	03030002			1,909.0	1,180.0												
12/30/2008	Flint Rock Farm #2		92812	DMS	DMS	Cape Fear	03030002				3,686.3				7.35								0.13
1/1/2009	Bald Creek (Site R)	WM-057-025		NCDOT	NCDOT	French Broad	06010105				610.0												
1/1/2009	Ivy Gap Branch (Site O)	WM-057-022		NCDOT	NCDOT	French Broad	06010105		82.0		793.0												
1/1/2009	Middle Fork Creek (Site G)	WM-057-014		NCDOT	NCDOT	French Broad	06010105				355.0												
1/1/2009	Middle Fork Creek (Site H)	WM-057-015		NCDOT	NCDOT	French Broad	06010105				454.0												
1/1/2009	Middle Fork Creek (Site K)	WM-057-018		NCDOT	NCDOT	French Broad	06010105				1,421.0												
1/1/2009	Polly Branch (Site L)	WM-057-019		NCDOT	NCDOT	French Broad	06010105				175.0												
1/1/2009	UT to Ivy Gap Branch (Site P)	WM-057-023		NCDOT	NCDOT	French Broad	06010105				55.0												
1/1/2009	UT to Rocky Branch	WM-056-007		NCDOT	NCDOT	Little Tennessee	06010202	393.0															
1/28/2009	UT Neuse (The Big Ditch)		92682	DMS	DMS	Neuse	03020201	2,132.0	0.0														
2/1/2009	Grimesland Bridge	WM-074-005		NCDOT	NCDOT	Tar-Pamlico	03020103					2.86											
3/1/2009	UT to Crane Creek (Site 12)	WM-100-007		NCDOT	NCDOT	French Broad	06010108	584.0															
3/20/2009	Bridge #6 over Northwest Fork Alligator River on NC 94	WM-089-005		NCDOT	NCDOT	Pasquotank	03010205					0.52											
3/29/2009	Jack Town Creek	WM-059-001		NCDOT	NCDOT	Catawba	03050101	450.0															
6/1/2009	UT to Little Tennessee	WM-056-008		NCDOT	NCDOT	Little Tennessee	06010202	190.0															
7/9/2009	UT To The Lumber River		94068	DMS	DMS	Lumber	03040203	4,285.0		463.0	6,300.0												
8/1/2009	UT to North Muddy Creek (Alien)		93873	DMS	DMS	Catawba	03050101				5,953.0												
8/1/2009	UT to North Muddy Creek (Haney)		93874	DMS	DMS	Catawba	03050101				4,725.0												
9/18/2009	Little Buffalo Creek Stream Mit. Site		94147	DMS	DMS	Yadkin	03040105	2,017.0	1,244.0	7,723.0	2,378.0												
9/24/2009	Scaly Bark Creek Mitigation Site		94148	DMS	DMS	Yadkin	03040105	4,875.0		3,596.0	700.0												
10/4/2009	Newtown Stream and Wetland Restoration Site		94150	DMS	DMS	Catawba	03050101	5,248.0		100.0		3.38			0.15								
10/4/2009	North Fork Mountain Creek Mit. Site		94151	DMS	DMS	Catawba	03050101	5,299.0				1.17	3.27										
1/27/2010	Hoffman Forest Bank - 2nd Purchase		94633	DMS	DMS	White Oak	03030001									8.20							
3/15/2010	Bishop Branch	WM-010-017		NCDOT	NCDOT	Cape Fear	03030005	66.0			570.0	0.63			2.95								
3/15/2010	R-2303B Site 1	WM-082-007		NCDOT	NCDOT	Cape Fear	03030006					1.84		1.08	0.02								
3/15/2010	R-2303B Site 2	WM-082-008		NCDOT	NCDOT	Cape Fear	03030006					2.19											
4/1/2010	UT Little River (NSD Site 7)	WM-096-012		NCDOT	NCDOT	Neuse	03020201	544.0															
4/26/2010	East Fork of the Pigeon River Wetlands		94203	DMS	DMS	French Broad	06010106				2,075.0			2.26	11.69								
6/1/2010	Waxhaw Creek Wetland		92692	DMS	DMS	Catawba	03050103				372.0				0.01								
6/1/2010	Waxhaw Creek Wetland #2		92786	DMS	DMS	Catawba	03050103				800.0				19.92								
6/29/2010	Summit Seep Wetland Mitigation		94646	DMS	DMS	Yadkin	03040103									3.91		0.18					
6/29/2010	Upper Silver Creek Stream and Wetland		94645	DMS	DMS	Catawba	03050101	4,843.0		342.0		4.67	0.99	2.85		0.21		0.42					
6/30/2010	Buffalo Flats Restoration Site		94647	DMS	DMS	Yadkin	03040105					11.20	1.20			3.40	0.00						
6/30/2010	Herman Dairy Farm Stream and Wetland Mitigation Site		94642	DMS	DMS	Catawba	03050101	4,560.0	330.0			7.20		2.20		1.20		0.05					
6/30/2010	Little Troublesome Creek Mitigation Site		94640	DMS	DMS	Cape Fear	03030002	4,968.0				8.60	4.90	3.70									
6/30/2010	Lyle Creek Mitigation Site		94643	DMS	DMS	Catawba	03050101	5,411.0		1,384.0		6.60	2.90										

Appendix I. Catalog of Stream and Wetland Compensatory Mitigation Projects

Project Start Date	SITE NAME	NCDOT Project ID	DMS Project ID	Source Agency	Credit Managing Agency	River Basin	Hydrologic Unit Code (HUC)	Stream Restoration	Stream Enhancement I	Stream Enhancement II	Stream Preservation	Riparian Wetland Restoration	Riparian Wetland Creation	Riparian Wetland Enhancement	Riparian Wetland Preservation	Nonriparian Wetland Restoration	Nonriparian Wetland Creation	Nonriparian Wetland Enhancement	Nonriparian Wetland Preservation	Coastal Marsh Restoration	Coastal Marsh Creation	Coastal Marsh Enhancement	Coastal Marsh Preservation
6/30/2010	Underwood Mitigation Site		94641	DMS	DMS	Cape Fear	03030002	4,661.0	1,180.0	3,292.0		5.84	6.46			0.75	0.45	0.34					
6/30/2010	UT to Town Creek		94648	DMS	DMS	Yadkin	03040105	4,862.0	2,061.0	572.5		1.80	3.60										
7/20/2010	R-2303C Site 1	WM-082-009		NCDOT	NCDOT	Cape Fear	03030006	550.0				2.50											
7/20/2010	R-2303D Site 1	WM-082-010		NCDOT	NCDOT	Cape Fear	03030006					1.55		0.26									
7/20/2010	R-2303D Site 2	WM-082-011		NCDOT	NCDOT	Cape Fear	03030006					0.87											
7/20/2010	UT to Goose Creek (Coats)		93876	DMS	DMS	Catawba	03050101				6,378.0												
10/1/2010	Middle South Muddy Creek		93875	DMS	DMS	Catawba	03050101	1,990.0	171.0	24.0	5,836.0												
10/18/2010	Hogan Creek		94708	DMS	DMS	Yadkin	03040101	2,612.0	1,200.0	346.0	5,699.0												
10/18/2010	Moore's Fork		94709	DMS	DMS	Yadkin	03040101	6,215.0	3,382.0	5,711.0	4,279.0												
12/10/2010	Crooked Creek #2		94687	DMS	DMS	Yadkin	03040105	1,718.0		4,429.0					6.70	3.90	1.00						
12/17/2010	UT West Branch Rocky River		92684	DMS	DMS	Yadkin	03040105	3,000.0															
1/1/2011	Yadkin River Bridge	WM-080-005		NCDOT	NCDOT	Yadkin	03040103					2.74											
1/2/2011	Turner Street	WM-016-007		NCDOT	NCDOT	Pasquotank	03010205														1.40		
3/1/2011	I-40 Slope Stabilization (Davis Goat Farm)	WM-044-006		NCDOT	NCDOT	French Broad	06010105	404.0															
4/15/2011	Shelby Bypass Site 1 (UT Buffalo Creek)	WM-023-002		NCDOT	NCDOT	Broad	03050105	950.0															
4/15/2011	Shelby Bypass Site 8 (UT First Broad River)	WM-023-003		NCDOT	NCDOT	Broad	03050105	110.0															
4/29/2011	U-2525B Site 2 (UT to South Buffalo Creek)	WM-041-029		NCDOT	NCDOT	Cape Fear	03030002	1,307.0															
4/29/2011	U-2525B Site 4 (UT to North Buffalo Creek)	WM-041-031		NCDOT	NCDOT	Cape Fear	03030002	386.0															
4/29/2011	U-2525B Site 5 (UT to North Buffalo Creek)	WM-041-032		NCDOT	NCDOT	Cape Fear	03030002	362.0															
6/16/2011	Little Pine Creek III		94903	DMS	DMS	New	05050001	3,207.0	3,337.0	2,493.0	3,495.0	0.00		2.71	0.19								
6/28/2011	Jacobs Ladder Site		95023	DMS	DMS	Yadkin	03040105	4,971.0	306.0	140.0													
6/28/2011	Jacobs Landing Site		95024	DMS	DMS	Yadkin	03040105	4,484.0		109.0													
7/6/2011	Tributaries of Wicker Branch Stream Enhancement		95022	DMS	DMS	Yadkin	03040105	1,390.0	640.0	1,990.0													
7/14/2011	601 North II Stream Restoration Site		95025	DMS	DMS	Yadkin	03040105	3,169.0	225.0	615.0													
7/14/2011	Muddy Run Site		95018	DMS	DMS	Cape Fear	03030007	6,702.0															
7/18/2011	Town Creek Restoration Project		95026	DMS	DMS	Yadkin	03040105	2,611.0	498.0	1,089.0													
7/18/2011	St Clair Creek Restoration Project		95015	DMS	DMS	Tar-Pamlico	03020104	3,274.0				2.80											
7/18/2011	UT to Mill Swamp Restoration Project		95019	DMS	DMS	White Oak	03030001	3,606.0	600.0			4.00											
7/27/2011	Devils Racetrack Mitigation Site		95021	DMS	DMS	Neuse	03020201	18,484.0	76.0	154.0		63.30											
7/27/2011	Junes Branch Stream Restoration Site		95027	DMS	DMS	Little Tennessee	06010203	3,162.0															
7/27/2011	Silver Moon Non-Riparian Wetland Mitigation Site		95017	DMS	DMS	Neuse	03020202									14.00							
7/27/2011	Byrd's Creek Mitigation Site		95020	DMS	DMS	Neuse	03020201	3,096.0	2,182.0	2,050.0	0.0												
8/15/2011	R-2519B Site 25	WM-061-003		NCDOT	NCDOT	French Broad	06010108	94.0															
8/15/2011	R-2519B Site 30	WM-061-004		NCDOT	NCDOT	French Broad	06010108	635.0															
8/15/2011	R-2519B Site 33	WM-061-005		NCDOT	NCDOT	French Broad	06010108	300.0															
8/15/2011	R-2519B Site 35	WM-061-006		NCDOT	NCDOT	French Broad	06010108	46.0															
10/21/2011	UT to Fisher Branch (U-2597B Onsite)	WM-034-004		NCDOT	NCDOT	Yadkin	03040101	450.0															
12/1/2011	Bridge No. 2 over CSX	WM-063-005		NCDOT	NCDOT	Cape Fear	03030004	118.0				1.67											
12/1/2011	US 17 Rest Area	WM-007-012		NCDOT	NCDOT	Tar-Pamlico	03020105		815.0														

Appendix I. Catalog of Stream and Wetland Compensatory Mitigation Projects

Project Start Date	SITE NAME	NCDOT Project ID	DMS Project ID	Source Agency	Credit Managing Agency	River Basin	Hydrologic Unit Code (HUC)	Stream Restoration	Stream Enhancement I	Stream Enhancement II	Stream Preservation	Riparian Wetland Restoration	Riparian Wetland Creation	Riparian Wetland Enhancement	Riparian Wetland Preservation	Nonriparian Wetland Restoration	Nonriparian Wetland Creation	Nonriparian Wetland Enhancement	Nonriparian Wetland Preservation	Coastal Marsh Restoration	Coastal Marsh Creation	Coastal Marsh Enhancement	Coastal Marsh Preservation
1/20/2012	Skeet Club Road (UT 3-3 to West Fork Deep River)	WM-041-018		NCDOT	NCDOT	Cape Fear	03030002	760.0															
1/31/2012	Site 26 - Georges Fork	WM-100-008		NCDOT	NCDOT	French Broad	06010108	580.0															
1/31/2012	Site 29 - Shoal Creek	WM-100-009		NCDOT	NCDOT	French Broad	06010108	233.0															
1/31/2012	Site 32 - UT to Plum Branch	WM-100-010		NCDOT	NCDOT	French Broad	06010108	210.0															
1/31/2012	Site 33 - Plum Branch	WM-100-011		NCDOT	NCDOT	French Broad	06010108	157.0															
3/1/2012	Mark Edwards (NSD Site 9)	WM-096-013		NCDOT	NCDOT	Neuse	03020201	1,322.0															
3/1/2012	UT to East Prong Hunting Creek (Site 3)	WM-012-001		NCDOT	NCDOT	Catawba	03050101	481.0															
3/1/2012	UT to East Prong Hunting Creek (Site 4)	WM-012-002		NCDOT	NCDOT	Catawba	03050101	115.0															
3/1/2012	UT to West Bear Creek	WM-096-008		NCDOT	NCDOT	Neuse	03020201	1,038.0															
6/1/2012	Onslow Bridge 26	WM-067-010		NCDOT	NCDOT	Cape Fear	03030007					0.80											
6/7/2012	Hopewell Stream Mitigation Site		95352	DMS	DMS	Yadkin	03040104	4,037.0	866.0	6,584.0	821.0												
6/7/2012	Hudson Property		95361	DMS	DMS	Tar-Pamlico	03020104	2,700.0															
6/7/2012	Brown Creek Tributaries Project		95351	DMS	DMS	Yadkin	03040104	8,323.0	1,564.0	546.0	549.0												
6/15/2012	Hoffler Property		95355	DMS	DMS	Chowan	03010203									23.00							
7/5/2012	Norkett Branch		95360	DMS	DMS	Yadkin	03040105	9,196.0		2,255.0													
7/5/2012	Poplin Ridge Site		95359	DMS	DMS	Yadkin	03040105	3,696.0	3,340.0	951.0	1,192.0												
7/27/2012	Bear Basin		95362	DMS	DMS	White Oak	03030001									8.60							
7/27/2012	Twin Bays		95363	DMS	DMS	Cape Fear	03030007									10.60							
8/1/2012	Best Site		95353	DMS	DMS	Cape Fear	03030007	5,023.0	1,303.0	812.0	19,807.0	5.25											
8/1/2012	Muddy Run II Site		95354	DMS	DMS	Cape Fear	03030007	9,976.0	708.0	727.0	4.92												
8/1/2012	Pee Dee Stream Restoration Site		95350	DMS	DMS	Yadkin	03040104	6,092.0	618.0														
8/1/2012	Stanleys Slough Stream and Wetland Site		95356	DMS	DMS	Chowan	03010204	4,274.0				3.60											
10/29/2012	Cochran Branch Stream and Wetland Restoration Site		95720	DMS	DMS	Little Tennessee	06010202	1,820.0				4.24		0.11									
10/29/2012	UT to Cane Creek		95729	DMS	DMS	Cape Fear	03030002	3,314.0	433.0	2,478.0													
11/1/2012	Claridge Nursery	WM-096-007		NCDOT	NCDOT	Neuse	03020201	10,397.0															
11/1/2012	R-2519B Site 18	WM-100-017		NCDOT	NCDOT	French Broad	06010108	70.0															
11/1/2012	R-2519B Site 21	WM-100-018		NCDOT	NCDOT	French Broad	06010108	396.0															
11/1/2012	R-2519B Site 5A	WM-100-013		NCDOT	NCDOT	French Broad	06010108	148.0															
11/1/2012	R-2519B Site 6	WM-100-014		NCDOT	NCDOT	French Broad	06010108	144.0															
11/1/2012	R-2519B Site 8	WM-100-015		NCDOT	NCDOT	French Broad	06010108	449.0															
11/1/2012	R-2519B Site 9	WM-100-016		NCDOT	NCDOT	French Broad	06010108	40.0															
11/14/2012	601 East Stream Restoration Project		95756	DMS	DMS	Yadkin	03040105	3,396.0	412.0		215.0												
11/29/2012	Norman's Pasture Stream and Riparian Wetland		95717	DMS	DMS	Cape Fear	03030006					16.20											
11/30/2012	Bowl Basin Non-Riparian Wetland Mitigation		95721	DMS	DMS	White Oak	03020106									11.70							
12/4/2012	Agony Acres Mitigation Site		95716	DMS	DMS	Cape Fear	03030002	5,309.0	353.0	1,726.0	1,807.0												
12/4/2012	Foust Creek Mitigation Site		95715	DMS	DMS	Cape Fear	03030002	4,357.0		1,143.0		5.06											
12/12/2012	UT to Millers Creek Site		95719	DMS	DMS	Cape Fear	03030006	2,709.0				8.77											
12/14/2012	Cedar Creek		95718	DMS	DMS	Cape Fear	03030006	2,989.0	680.0	4,584.0	13.72												
3/1/2013	Owis Den Mitigation Site		95808	DMS	DMS	Catawba	03050102	2,468.0				9.59											
3/27/2013	Cripple Creek Stream and Wetland Mitigation Bank Credit Purchase SFY 2014		96527	DMS	DMS	Cape Fear	03030002									0.54							

Appendix I. Catalog of Stream and Wetland Compensatory Mitigation Projects

Project Start Date	SITE NAME	NCDOT Project ID	DMS Project ID	Source Agency	Credit Managing Agency	River Basin	Hydrologic Unit Code (HUC)	Stream Restoration	Stream Enhancement I	Stream Enhancement II	Stream Preservation	Riparian Wetland Restoration	Riparian Wetland Creation	Riparian Wetland Enhancement	Riparian Wetland Preservation	Nonriparian Wetland Restoration	Nonriparian Wetland Creation	Nonriparian Wetland Enhancement	Nonriparian Wetland Preservation	Coastal Marsh Restoration	Coastal Marsh Creation	Coastal Marsh Enhancement	Coastal Marsh Preservation
4/17/2013	Stanley's II		95838	DMS	DMS	Chowan	03010204					7.60											
4/19/2013	Idols Road Extension	WM-034-003		NCDOT	NCDOT	Yadkin	03040101	1,876.5															
6/15/2013	Bachelors Delight Stream and Wetland Mitigation Bank Credit Purchase SFY 2014		96526	DMS	DMS	White Oak	03030001									6.00							
8/6/2013	Pancho Stream & Wetland Mitigation Bank Credit Purchase SFY 2014		96522	DMS	DMS	Neuse	03020201	3,313.0															
8/8/2013	Forrest Creek Mitigation Bank Credit Purchase SFY 2014		96521	DMS	DMS	Neuse	03020201	361.3															
8/27/2013	Thomas Creek		96074	DMS	DMS	Cape Fear	03030004	4,362.0	563.0	1,295.0	2,196.0												
9/3/2013	Neu-Con Wetland and Stream Restoration Bank (Howell Woods Site) Credit Purchase SFY 2014		96525	DMS	DMS	Neuse	03020201	1,000.0															
2/5/2014	Norman's Pasture II		96310	DMS	DMS	Cape Fear	03030006			843.0		10.20											
2/14/2014	Roses Creek Stream Mitigation Site		96309	DMS	DMS	Catawba	03050101	4,738.0		679.0													
2/15/2014	Henry Fork Stream and Wetland Mitigation Project		96306	DMS	DMS	Catawba	03050102	9,255.0	4,755.0			3.96	0.68										
2/21/2014	Abbey Lamm Stream and Wetland		96311	DMS	DMS	Cape Fear	03030002	4,400.0		829.0		1.00	0.40										
2/21/2014	Holman Mill Stream Mitigation Project		96316	DMS	DMS	Cape Fear	03030002	1,706.0	293.0	6,718.0													
2/21/2014	Maney Farm Stream Mitigation Site		96314	DMS	DMS	Cape Fear	03030002	3,899.0	614.0	1,599.0													
2/21/2014	Aycock Springs Stream and Wetland		96312	DMS	DMS	Cape Fear	03030002	3,357.0		677.0		0.50	1.50										
2/21/2014	Candy Creek Stream Mitigation Site		96315	DMS	DMS	Cape Fear	03030002	12,579.0	2,326.0	1,644.0	3,343.0												
3/6/2014	Browns Summit Creek Restoration Project		96313	DMS	DMS	Cape Fear	03030002	5,023.0	363.0	770.0		2.50											
6/13/2014	Wash Creek Mitigation Bank Credit Purchase SFY 2014		96867	DMS	DMS	French Broad	06010105	100.0															
6/19/2014	Flea Hill Restoration		96520	DMS	DMS	Cape Fear	03030004	2,500.0															
6/24/2014	Vile Creek Mitigation Site		96582	DMS	DMS	New	05050001	2,998.0	979.5	3,717.5		6.94											
7/15/2014	Bass Mountain Stream Mitigation Bank Credit Purchase SFY 2014		96528	DMS	DMS	Cape Fear	03030002	738.6															
1/7/2015	Bass Mountain Stream Mitigation Bank Credit Purchase SFY 2015		96813	DMS	DMS	Cape Fear	03030002	100.0															
1/7/2015	Pancho Stream & Wetland Mitigation Bank Credit Purchase SFY 2015		96814	DMS	DMS	Neuse	03020201	885.4				3.50											
4/1/2015	Anderson Farm Stream Mitigation Bank Credit Purchase SFY 2015		96810	DMS	DMS	French Broad	06010105	950.0															
4/10/2015	Sandy Bridge Farm		96920	DMS	DMS	Broad	03050105	1,626.0				6.74											
5/1/2015	John Deere Stream & Wetland Restoration Site		96917	DMS	DMS	Broad	03050105	900.0				10.90	0.16										
7/1/2015	Cedar Branch Restoration Site		97009	DMS	DMS	Yadkin	03040103	7,000.0															

Appendix I. Catalog of Stream and Wetland Compensatory Mitigation Projects

Project Start Date	SITE NAME	NCDOT Project ID	DMS Project ID	Source Agency	Credit Managing Agency	River Basin	Hydrologic Unit Code (HUC)	Stream Restoration	Stream Enhancement I	Stream Enhancement II	Stream Preservation	Riparian Wetland Restoration	Riparian Wetland Creation	Riparian Wetland Enhancement	Riparian Wetland Preservation	Nonriparian Wetland Restoration	Nonriparian Wetland Creation	Nonriparian Wetland Enhancement	Nonriparian Wetland Preservation	Coastal Marsh Restoration	Coastal Marsh Creation	Coastal Marsh Enhancement	Coastal Marsh Preservation
7/16/2015	Rough Horn Swamp Restoration Site		97005	DMS	DMS	Lumber	03040203					20.00				11.00							
1/15/2016	Black Gum Creek		97063	DMS	DMS	Lumber	03040203									9.90			77.00				
2/8/2016	Tar River Headwaters Wetland Restoration Site		97071	DMS	DMS	Tar-Pamlico	03020101					5.00											
3/18/2016	Pen Dell Mitigation Project		97079	DMS	DMS	Neuse	03020201	1,774.0	1,170.0	845.0	995.0												
3/18/2016	Edwards-Johnson Mitigation Project		97080	DMS	DMS	Neuse	03020201	2,941.0			735.0												
3/18/2016	Lake Wendell Mitigation Project		97081	DMS	DMS	Neuse	03020201	3,220.0		190.0	853.0												
3/22/2016	Dry Creek Mitigation Site		97082	DMS	DMS	Neuse	03020201	7,586.0	417.0	850.0	295.0												
3/22/2016	Lochill Farm Stream Mitigation Project		97083	DMS	DMS	Neuse	03020201	2,886.0	1,103.0	1,043.0	730.0												
3/22/2016	Buckwater Mitigation Site		97084	DMS	DMS	Neuse	03020201	8,706.0	2,571.0	5,149.0													
3/22/2016	Stony Fork Restoration Site		97085	DMS	DMS	Neuse	03020201	6,908.0		697.0													
3/22/2016	Alliance Headwaters Stream Mitigation Site		97086	DMS	DMS	Neuse	03020201	6,110.0		1,368.0													
3/22/2016	Martin Dairy Mitigation Site		97087	DMS	DMS	Neuse	03020201	2,134.0															
5/10/2016	Deep Meadow Mitigation Site		97131	DMS	DMS	Yadkin	03040105	1,735.0	50.0	2,424.0	78.0	9.40											
5/23/2016	Lone Hickory Mitigation Site		97135	DMS	DMS	Yadkin	03040101	12,811.0			900.0												
5/23/2016	Mill Dam Creek Restoration Project		97136	DMS	DMS	Yadkin	03040101	8,113.0	1,608.0	4,537.0													
6/14/2016	Eden Farm Mitigation Project-Option C		97128	DMS	DMS	Roanoke	03010104		4,129.0	232.0		10.40				2.00							