

NORH CAROLINA PER- AND POLYFLUOROALKYL SUBSTANCES TESTING (PFAST) NETWORK

Progress Report #1 submitted to the North Carolina General Assembly
Environmental Review Commission, the NC Department of
Environmental Quality, the NC Department of Health and Human
Services, and the Environmental Protection Agency (Region 4)

October 1, 2018



1.0 LEGISLATIVE MANDATE

The North Carolina General Assembly (NCGA), in the passing of Session Law (SL) 2018-5, Sections 13.1.(g), directed the North Carolina Policy Collaboratory (Collaboratory) to *“identify faculty expertise, technology, and instrumentation, including mass spectrometers, located within institutions of higher education in the State, including the Universities of North Carolina at Chapel Hill and Wilmington, North Carolina State University, North Carolina A&T University, Duke University, and other public and private institutions, and coordinate these faculty and resources to conduct nontargeted analysis on PFAS, including GenX, at all public water supply surface water intakes and one public water supply well selected by each municipal water system that operates groundwater wells for public drinking water supplies as identified by the Department of Environmental Quality, to establish a water quality baseline for all sampling sites. The Collaboratory, in consultation with the participating institutions of higher education, shall establish a protocol for the baseline testing required by this subsection, as well as a protocol for periodic retesting of the municipal intakes and additional public water supply wells.”* The term ‘PFAS’, listed above, refers to Per- and Polyfluoroalkyl Substances and the study is sometimes referred to herein as the PFAST Network (PFAS Testing Network).

In addition to the water sampling identified above, additional study parameters are mandated in Section 13.1.(l), which states, *“The Collaboratory shall identify faculty expertise within institutions of higher education in the State, including the Universities of North Carolina at Chapel Hill and Wilmington, North Carolina State University, North Carolina A&T State University, Duke University, and other public and private institutions, and use technology and instrumentation existing throughout the institutions to conduct the following research (i) develop quantitative models to predict which private wells are most at risk of contamination from the discharge of PFAS, including GenX; (ii) test the performance of relevant technologies in removing such compounds; and (iii) study the air emissions and atmospheric deposition of PFAS, including GenX. In addition, Collaboratory may, using relevant faculty expertise, technology, and instrumentation existing throughout institutions identified, evaluate other research opportunities and conduct such research for improved water quality sampling and analyses techniques, data interpretation, and potential mitigation measures that may be necessary, with respect to the discharge of PFAS, including GenX.”*

Because the research is just now getting underway to carry out these legislative mandates, this document outlines focuses on the organizational structure, tasks completed to date on setting up this structure (including budget and funding disbursement), and how the Collaboratory plans on carrying out the mandates. All provisions passed by the NCGA referring to this project are included in Appendix I of this document.

2.0 BUDGET AUTHORIZATION

The NCGA-mandated Per- and Polyfluoroalkyl Substances (PFAS) study (herein referred to as the PFAS Testing Network or PFAST Network) was funded by an appropriation from the NCGA. Section 13.1.(i) of SL 2018-5 states, *“Five million thirteen thousand dollars (\$5,013,000) of the funds appropriated in this act for the 2018-2019 fiscal year to the Board of Governors of The University of North Carolina shall be allocated to the Collaboratory to manage and*

implement the requirements of this section, which shall include distribution to the Collaboratory and participating institutions of higher education (i) to cover costs incurred as a result of activities conducted pursuant to this section, (ii) for acquisition or modification of essential scientific instruments, or (iii) for payments of costs for sample collection and analysis, training or hiring of research staff and other personnel, method development activities, and data management, including dissemination of relevant data to stakeholders. No overhead shall be taken from these funds from the participating institutions that receive any portion of these funds. Funds appropriated by this section shall not revert but shall remain available for nonrecurring expenses.”

3.0 REPORTING REQUIREMENTS

Section 13.1.(h) of SL 2018-5 states, *“Beginning October 1, 2018, the Collaboratory shall report no less than quarterly to the Environmental Review Commission, the Department of Environmental Quality, and the Department of Health and Human Services on all activities conducted pursuant to this section, including any findings and recommendations for any steps the Department of Environmental Quality, the Department of Health and Human Services, the General Assembly, or any other unit of government should take in order to address the impacts of PFAS, including GenX, on surface water and groundwater quality, as well as air quality in the State.”* This report fulfills the NCGA requirement for the submission of quarterly progress reports starting on October 1, 2018. Four additional progress reports will be submitted no later than January 1, 2019; April 1, 2019; July 1, 2019; October 1, 2019. The project’s final report will be submitted no later than December 1, 2019.

4.0 PROGRESS TO DATE

In May, 2018, prior to the consideration and passage of the Per- and Polyfluoroalkyl Substances (PFAS) study mandate from the NCGA, the Collaboratory announced its funding of three separate projects related to emerging contaminants, including PFAS, at a level of \$430,000. The funds for these three projects came from the Collaboratory’s matching grant program established by the Challenge Grant provided by the NCGA (Section 27.5 of SL 2016-94 as amended by Section 10.4.(a) of SL 2017-57). These projects, which pre-dated the NCGA PFAS study discussed herein, currently are underway to focus on: 1) performance testing of technologies for removal of chemicals, including PFAS, from private wells (\$300,000), 2) development of a paper-based assay to identify GenX in water (\$50,000), and 3) strategic planning and collaboration of researchers across the State regarding emerging contaminants in general, including PFAS (\$80,000). The goals of this third effort is to develop a detailed list of what faculty members are involved in research; what is the scope of these research efforts; what research is already complete, what is underway, and what is planned; creating a list of pertinent research publications; and what grants have been awarded (and what may be awarded in the future) that could be eligible for matching funds from the Collaboratory’s NCGA Challenge Grant program. This third strategic planning effort is being led by Dr. Jacqueline MacDonald Gibson (UNCCH) and includes Co-Principal Investigators from UNCW (Dr. Ralph Mead), UNCC (Dr. Mei Sun), NCSU (Dr. Detlef Knappe), ECU (Dr. Jamie DeWitt), and Duke University (Dr. Lee Ferguson). Having this strategic planning team already in place facilitated

formation of an Executive Advisory Committee (EAC) for the PFAST Network (NCGA PFAS study) once it became law.

Since the strategic planning team was already in place through Collaboratory funding (separate from the PFAS study appropriation), prior to the introduction and passage of the NCGA's PFAS study mandate, organizational planning for the PFAST Network began immediately upon the NCGA PFAS mandate becoming law. The PFAST Network EAC is co-chaired by Drs. Detlef Knappe (NCSU) and Lee Ferguson (Duke), two of the leading researchers worldwide in the field of emerging contaminant detection and analysis. Since the passage of SL 2018-5 (June 12, 2018), the following organizational milestones have been achieved:

- The decision was made by Collaboratory leadership and Collaboratory Advisory Board Chair Dr. Albert Segars (note the Collaboratory Advisory Board is different from the PFAST Network EAC) to have project managed on behalf of the Collaboratory by the Gillings School of Global Public Health at UNCCH.
- Professor Jason Surratt, an atmospheric and air pollution chemist with experience executing complex environmental sampling and multi-collaborator research projects, was chosen as project manager by Gillings' Department of Environmental Sciences and Engineering Chair, Dr. Barbara Turpin, who was asked to choose independently without influence by the Collaboratory.
- A project management team to assist Professor Jason Surratt identified, has been hired and is in place at Gillings UNCCH. This project management teams includes a Scientific Program Analyst and Program Assistant. Dr. Wanda Bodnar was selected as the Scientific Program Analyst due to her strong background in analytical chemistry and mass spectrometry, which are tools that will be used by most of the research teams. The Scientific Program Analyst solicits monthly scientific reports from each research team and evaluates their progress in comparison to the promised work outlined in each team's statement of work (or approved proposal). The Scientific Program Analyst assists Professor Surratt with conducting site visits at each of the investigators' labs to ensure the best practices in quality assurance (QA) and quality control (QC) are being met in order to produce the highest quality results for the state. Ms. Manal Khan was hired to serve as the Program Assistant due to her strong background in project management at the NC Department of Human Health Services. The Program Assistant also organizes monthly EAC Meetings, organizes PFAST Network-related events, solicits monthly financial reports from each investigator, and leads all accounting responsibilities for the research network. The project management team (Surratt, Bodnar, Khan) at UNCCH will synthesize information from the monthly scientific and financial reports in order to compose the quarterly reports submitted to the State.
- An Executive Advisory Committee (EAC) has been established, chaired by Drs. Detlef Knappe (NCSU) and Lee Ferguson (Duke). The EAC has met three times to discuss/plan project, including on
- Key obligations identified to meet NCGA mandate and five research teams plus two support teams have been established, including identification and placement of team leads and members (see organizational chart in Figure 1 of this report).
- Preliminary scopes (or statements) of work (SOWs) have been established and reviewed by at least two external faculty or experts in the field outside of UNC System, as well as

by one EAC member. Final review by the EAC is in progress, and the target for final approval of SOWs is mid-October with research beginning immediately upon this pending decision.

- A preliminary budget has been set for each team. Funds already received by OSBM for UNC/Duke participants, and budget transfers are underway (facilitated by the UNCCH Budget Office) from OSBM to remaining UNC campuses (NCSU, UNCW, UNCC, ECU, NCA&T). The initial budget memo is included in Appendix II of this report.
- Joint PFAS symposium planned (joint partnership between Collaboratory, Duke Superfund Research Center, Gillings School of Global Public Health at UNCCH, and the Center for Environmental Health and Susceptibility at UNCCH) and held Friday, September 28, 2018 at the Washington Duke Conference Center, Durham, NC. The conference had 190 registrants and was stream live to those unable to attend. The conference included a policymaking panel discussion, including an open question and answer period from the audience, composed of four State legislators from the NCGA (Representative Pricey Harrison, D – Guilford County; Representative John Szoka, R – Cumberland County; Senator Floyd McKissick, D – Durham and Granville Counties; Senator Michael Lee, R – New Hanover County). An agenda included in Appendix III of this report.
- Water sampling sites identified in conjunction with NC Department of Environmental Quality (NC DEQ); total sampling sites = 348 (190 surface water intakes and 158 municipalities with at least one public water supply well only one of which shall be sampled per NCGA mandate); full list of sampling sites provided by NC DEQ are included in Appendix IV of this report.

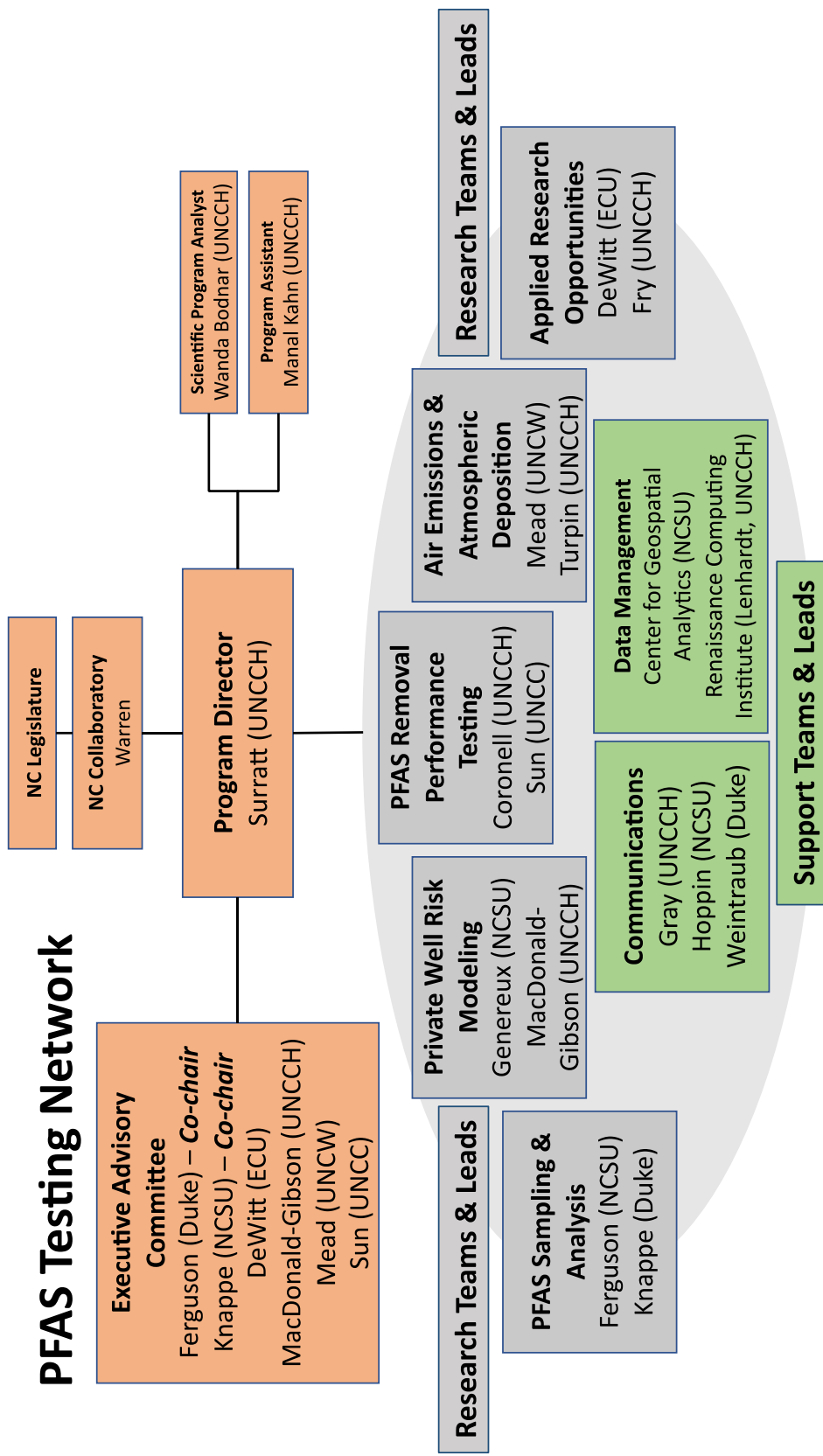


Figure 1. Organizational structure of the PFAST Network teams.

APPENDIX I

LEGISLATIVE LANGUAGE PASSED BY THE NORTH CAROLINA GENERAL ASSEMBLY

(Session Law 2018-5, Sections (f) through (l), effective June 12, 2018)

FUNDING TO ADDRESS PER- AND POLY-FLUOROALKYL SUBSTANCES, INCLUDING GENX/USE OF EXPERTISE AND TECHNOLOGY AVAILABLE IN INSTITUTIONS OF HIGHER EDUCATION LOCATED WITHIN THE STATE

SECTION 13.1.(f) The General Assembly finds that (i) per- and poly-fluoroalkyl substances (PFAS), including the chemical known as "GenX" (CAS registry number 62037-80-3 or 13252-13-6), are present in multiple watersheds in the State, and impair drinking water and (ii) these contaminants have been discovered largely through academic research not through systematic water quality monitoring programs operated by the Department of Environmental Quality or other State or federal agencies. The General Assembly finds that the profound, extensive, and nationally recognized faculty expertise, technology, and instrumentation existing within the Universities of North Carolina at Chapel Hill and Wilmington, North Carolina State University, North Carolina A&T State University, Duke University, and other public and private institutions of higher education located throughout the State should be maximally utilized to address the occurrence of PFAS, including GenX, in drinking water resources.

SECTION 13.1.(g) The North Carolina Policy Collaboratory at the University of North Carolina at Chapel Hill (Collaboratory) shall identify faculty expertise, technology, and instrumentation, including mass spectrometers, located within institutions of higher education in the State, including the Universities of North Carolina at Chapel Hill and Wilmington, North Carolina State University, North Carolina A&T State University, Duke University, and other public and private institutions, and coordinate these faculty and resources to conduct nontargeted analysis for PFAS, including GenX, at all public water supply surface water intakes and one public water supply well selected by each municipal water system that operates groundwater wells for public drinking water supplies as identified by the Department of Environmental Quality, to establish a water quality baseline for all sampling sites. The Collaboratory, in consultation with the participating institutions of higher education, shall establish a protocol for the baseline testing required by this subsection, as well as a protocol for periodic retesting of the municipal intakes and additional public water supply wells. No later than December 1, 2019, Collaboratory shall report the results of such sampling by identifying chemical families detected at each intake to the Environmental Review Commission, the Department of Environmental Quality, the Department of Health and Human Services, and the United States Environmental Protection Agency.

SECTION 13.1.(h) Beginning October 1, 2018, the Collaboratory shall report no less than quarterly to the Environmental Review Commission, the Department of Environmental Quality, and the Department of Health and Human Services on all activities conducted pursuant to this section, including any findings and recommendations for any steps the Department of Environmental Quality, the Department of Health and Human Services, the General Assembly, or any other unit of government should take in order to address the impacts of PFAS, including GenX, on surface water and groundwater quality, as well as air quality in the State.

SECTION 13.1.(i) Five million thirteen thousand dollars (\$5,013,000) of the funds appropriated in this act for the 2018-2019 fiscal year to the Board of Governors of The University of North Carolina shall be allocated to the Collaboratory to manage and implement the requirements of this section, which shall include distribution to the Collaboratory and participating institutions of higher education (i) to cover costs incurred as a result of activities conducted pursuant to this

section, (ii) for acquisition or modification of essential scientific instruments, or (iii) for payments of costs for sample collection and analysis, training or hiring of research staff and other personnel, method development activities, and data management, including dissemination of relevant data to stakeholders. No overhead shall be taken from these funds from the participating institutions that receive any portion of these funds. Funds appropriated by this section shall not revert but shall remain available for nonrecurring expenses.

SECTION 13.1.(j) The Collaboratory should pursue relevant public and private funding opportunities that may be available to address the impacts of PFAS, including GenX, on surface water and groundwater quality, as well as air quality, in order to leverage funds appropriated by this section, or any other funds provided to the Collaboratory, including the Challenge Grant authorized in Section 27.5 of S.L. 2016-94, as amended by Section 10.4(a) of S.L. 2017-57.

SECTION 13.1.(k) In the event that the United States Environmental Protection Agency no longer provides access to its analytical instrumentation at no cost to the State for water quality sampling analysis related to per- and poly-fluoroalkyl substances (PFAS), including the chemical known as "GenX" (CAS registry number 62037-80-3 or 13252-13-6), or if the Department of Environmental Quality determines that such analysis is not being performed in a sufficiently timely manner, the Collaboratory shall coordinate such analysis in the most cost-effective manner using relevant faculty expertise, technology, and instrumentation, including mass spectrometers, existing throughout institutions of higher education located throughout the State, until such time as the Department of Environmental Quality is able to perform such analysis with instrumentation acquired pursuant to subsection (q) of this section. The Collaboratory, in consultation with the Department and relevant experts across institutions of higher education in the State, including the Universities of North Carolina at Chapel Hill and Wilmington, North Carolina State University, North Carolina A&T State University, Duke University, and other public and private institutions, shall establish a protocol for delivery of such samples taken by the Department to the entity designated to perform analysis of the samples, chain of custody protocols, and other matters to ensure proper handling and processing of the samples, which protocols shall be subject to approval by the United States Environmental Protection Agency, if such approval is required pursuant to authority delegated from the United States Environmental Protection Agency to the Department to administer federal environmental law.

SECTION 13.1.(l) The Collaboratory shall identify faculty expertise within institutions of higher education in the State, including the Universities of North Carolina at Chapel Hill and Wilmington, North Carolina State University, North Carolina A&T State University, Duke University, and other public and private institutions, and use technology and instrumentation existing throughout the institutions to conduct the following research (i) develop quantitative models to predict which private wells are most at risk of contamination from the discharge of PFAS, including GenX; (ii) test the performance of relevant technologies in removing such compounds; and (iii) study the air emissions and atmospheric deposition of PFAS, including GenX. In addition, Collaboratory may, using relevant faculty expertise, technology, and instrumentation existing throughout institutions identified, evaluate other research opportunities and conduct such research for improved water quality sampling and analyses techniques, data interpretation, and potential mitigation measures that may be necessary, with respect to the discharge of PFAS, including GenX.

APPENDIX II

PRELIMINARY BUDGET FOR PFAST NETWORK BASED ON \$5,013,000 LEGISLATIVE APPROPRIATION AS SUBMITTED TO UNC CH BUDGET OFFICE

TO: Henry Price, Associate Director / Budget Officer, UNCCH
FROM: Jeffrey Warren, NC Policy Collaboratory Research Director, UNCCH
DATE: August 9, 2018
RE: Drawdown Request for FY 2018-19 NCGA PFAS Appropriation

SUMMARY

Pursuant to Section 13.1.(i) of Session Law (S.L.) 2018-5 (S99; Appropriations Act of 2018), which became law on June 12, 2018, the North Carolina Policy Collaboratory (Collaboratory) requests, upon certification by the Office of State Budget and Management (OSBM), the receipt of the \$5,013,000 appropriation therein. As mandated by the North Carolina General Assembly (NCGA), these funds shall be used to create the PFAST (Per- and Polyfluoroalkyl Substance Testing) Network *“to manage and implement the requirements of this section, which shall include distribution to the Collaboratory and participating institutions of higher education (i) to cover costs incurred as a result of activities conducted pursuant to this section, (ii) for acquisition or modification of essential scientific instruments, or (iii) for payments of costs for sample collection and analysis, training or hiring of research staff and other personnel, method development activities, and data management, including dissemination of relevant data to stakeholders. No overhead shall be taken from these funds from the participating institutions that receive any portion of these funds. Funds appropriated by this section shall not revert but shall remain available for nonrecurring expenses.”*

LEGISLATIVE MANDATE

The NCGA directed (Section 11.8 of S.L. 2016-94) the University of North Carolina at Chapel Hill (UNCCH) to *“establish a Collaboratory that facilitates the dissemination of the policy and research expertise of The University of North Carolina for practical use by State and local government.”* Furthermore, in the Appropriations Act of 2018 (Section 13.1.(g) of S.L. 2018-5), the NCGA has mandated the Collaboratory to, among other things, *“identify faculty expertise, technology, and instrumentation, including mass spectrometers, located within institutions of higher education in the State, including the Universities of North Carolina at Chapel Hill and Wilmington, North Carolina State University, North Carolina A&T State University, Duke University, and other public and private institutions, and coordinate these faculty and resources to conduct nontargeted analysis for PFAS, including GenX, at all public water supply surface water intakes and one public water supply well selected by each municipal water system that operates groundwater wells for public drinking water supplies as identified by the Department of Environmental Quality, to establish a water quality baseline for all sampling sites.”*

PROPOSED BUDGET

The Collaboratory has selected the Gillings School of Global Public Health at UNCCH (Gillings) to manage the overall project. In partnership with the Collaboratory, Gillings has created a pan-campus, interdisciplinary team of nationally and internationally recognized academic experts from UNCCH, UNCW, NCSU, NCA&T, UNCC, ECU, and Duke University to establish the North Carolina PFAST Network. The budget presented below was prepared by the Collaboratory and Gillings in cooperation with the Co-Principal Investigators for each of these campus teams. Because the appropriation is non-reverting, the full budget presented below has been developed for an 18-month time period spanning both FY 2018-19 and FY 2019-20 in order to meet the final reporting deadline of December 1, 2019 defined by the NCGA.

Indirect/overhead costs are specifically disallowed by the NCGA appropriation and, therefore, are not included. Per UNCCH budget policy, specific personnel and fringe rates for faculty/staff/students are itemized below only for UNCCH participants, and all non-UNCCH funding allocations are classified, for the purpose of the budget provided in this memo, as non-personnel (i.e., Collaboratory/Gillings will pay into the UNCCH fringe pool directly from these funds and non-UNCCH campuses will be responsible for covering their specific fringe rates from funds allocated to their campus/program). Finally, per Section 13.1.(j) of S.L. 2018-5, *“The Collaboratory should pursue relevant public and private funding opportunities that may be available to address the impacts of PFAS, including GenX, on surface water and groundwater quality, as well as air quality, in order to leverage funds appropriated by this section, or any other funds provided to the Collaboratory, including the Challenge Grant authorized in Section 27.5 of S.L. 2016-94, as amended by Section 10.4(a) of S.L. 2017-57.”* Therefore, the Collaboratory may supplement this budget during the course of this project.

Table 1. Total Budgeted Expenditures Per University

Breakdown of budget allocations for each campus involved in the NCGA-mandated PFAST Network. Numbers have been rounded to the nearest dollar.

UNIVERSITY	AMOUNT
University of North Carolina at Chapel Hill	\$1,889,652
University of North Carolina at Wilmington	\$299,942
North Carolina State University	\$1,550,762
North Carolina A&T State University	\$20,521
University of North Carolina at Charlotte	\$341,406
East Carolina University	\$171,068
Duke University	\$739,649
TOTAL	\$5,0130,000

Table 2. Total Budgeted Expenditures Specific to UNCCH

Breakdown of budget allocations for UNCCH each campus involved in the NCGA PFAST Network. Itemization includes a breakdown of personnel (salary and fringe reported separately) and non-personnel costs. Numbers have been rounded to the nearest dollar.

UNCCH TEAM DESCRIPTION	GENERAL BUDGET ITEM	SUBTOTAL
Project Management Team	Personnel	\$405,155
	Personnel Fringe Benefits	\$128,914
	Non-Personnel	\$181,854
Team 1 – water sampling	Personnel	\$0
	Personnel Fringe Benefits	\$0
	Non-Personnel	\$0
Team 2 – private well risk modelling	Personnel	\$107,731
	Personnel Fringe Benefits	\$21,319
	Non-Personnel	\$8,050
Team 3 – PFAS removal performance testing	Personnel	\$182,061
	Personnel Fringe Benefits	\$36,321

	Non-Personnel	\$38,500
Team 4 – air emissions and atmospheric deposition	Personnel	\$138,408
	Personnel Fringe Benefits	\$31,582
	Non-Personnel	\$65,256
Team 5 – applied research opportunities	Personnel	\$117,456
	Personnel Fringe Benefits	\$31,751
	Non-Personnel	\$50,000
Team 6 – project communications	Personnel	\$38,867
	Personnel Fringe Benefits	\$12,700
	Non-Personnel	\$9,488
Team 7 – data management	Personnel	\$175,910
	Personnel Fringe Benefits	\$59,193
	Non-Personnel	\$49,136
TOTAL		\$1,889,652

Table 3. Total Budgeted Expenditures Per Team

Breakdown of budget allocations for each team (which includes multiple campuses) involved in the NCGA PFAST Network. Numbers have been rounded to the nearest dollar.

TEAM	UNCCH	UNCW	NCSU	NCA&T	UNCC	ECU	DUKE
Project Mgmt	\$715,923	\$0	\$0	\$0	\$0	\$0	\$0
Team 1 water sampling	\$0	\$0	\$502,075	\$0	\$171,478	\$0	\$582,906
Team 2 well risk models	\$137,100	\$0	\$240,927	\$0	\$0	\$0	\$0
Team 3 PFAS removal tests	\$256,882	\$0	\$126,907	\$0	\$166,928	\$0	\$99,689
Team 4 air deposition	\$235,246	\$299,942	\$0	\$0	\$3,000	\$3,000	\$0
Team 5 Applied R&D	\$199,207	\$0	\$510,857	\$20,521	\$0	\$168,068	\$0
Team 6 communications	\$61,054	\$0	\$57,054	\$0	\$0	\$0	\$57,054
Team 7 data mgmt	\$284,239	\$0	\$112,942	\$0	\$0	\$0	\$0
TOTAL	\$1,889,652	\$299,942	\$1,550,762	\$20,521	\$341,406	\$171,068	\$739,649

APPENDIX III

PFAS CONFERENCE AGENDA

(September 28, 2018)

Friday, September 28, 2018
Fall 2018 Symposium
“Emerging Contaminants in the Ambient Environment: Perspectives to Guide North
Carolina’s Per- and Polyfluoroalkyl Substances (PFAS) Monitoring Network”
The Washington Duke Inn, Ambassador Ballroom

8:30 am	Continental Breakfast and Registration
9:00 am	Welcome and Introductions Lee Ferguson, PhD, Associate Professor of Environmental Science and Engineering, Duke University
9:15 am	Emerging Contaminant Monitoring in Swiss Surface Waters: Targeted and Non-targeted Strategies for Water Quality Assessment Matthias Ruff, PhD, Research Scientist, Office of Water and Waste, Canton of Bern, Switzerland
10:00 am	Challenges of PFAS in Water Chris Higgins, PhD, Associate Professor of Civil and Environmental Engineering, Colorado School of Mines
10:45 am	BREAK
11:00 am	Occurrence and Human Health Risk Assessment of PFAS in New Jersey’s Environment Gloria Post, PhD, Research Scientist, New Jersey Department of Environmental Protection
11:30 am	Investigations of Per- and Polyfluorinated Compounds in Environmental Samples Mark Strynar, PhD, Physical Scientist, US EPA National Exposure Research Laboratory
12:00 pm	LUNCH
1:00 pm	Afternoon Welcome Jason Surratt, PhD, Professor of Environmental Sciences and Engineering, UNC Gillings Global School of Public Health
1:10 pm	PFAS in North Carolina Detlef Knappe, PhD, Professor of Civil, Construction and Environmental Engineering, NC State University

- 1:45 pm **Study Context and Policy Landscape**
 Jeff Warren, PhD, Research Director, NC Policy Collaboratory
 How can research inform NC communities in responding to PFAS? Panel participants include Reps. Harrison (D-Guilford) & Szoka (R-Cumberland), Sens. McKissick (D-Durham) & Lee (R-New Hanover).
- 2:30 pm **BREAK**
- 2:45 pm **Introduction to the PFAS study**
 Dr. Jason Surratt to moderate below lightning talks; Q & A will follow each talk.
- 2:50 pm **PFAS Testing: Water** (Drs. Knappe, Ferguson)
 3:10 pm **PFAS Testing: Air** (Drs. Mead, Turpin)
 3:30 pm **PFAS Removal Performance Testing** (Drs. Sun, Coronell)
 3:50 pm **PFAS Private Well Risk Assessment** (Drs. MacDonald Gibson, Genereux)
 4:10 pm **New PFAS Research Opportunities** (Drs. DeWitt, Bangma)
 4:30 pm **Wrap-Up** (Dr. Surratt)
- 4:45 pm **Closing Comments**
 Dr. Lee Ferguson

SPONSORED BY:



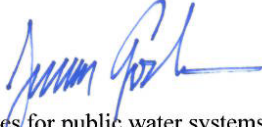
APPENDIX IV

PUBLIC WATER SAMPLING LOCATIONS AS DEFINED BY THE NC DEPARTMENT OF ENVIRONMENTAL QUALITY



ROY
COOPER
Governor
MICHAEL S. REGAN
Secretary
LINDA CULPEPPER
Interim Director

June 20, 2018

To: Jim Gregson
From: Jessica Godreau 
Subject: PFAS sampling sites for public water systems
In accordance with the Appropriations Act of 2018, SL 2018-5

Enclosed are the requested data relating to surface water intakes and municipal groundwater wells. The surface water intakes file includes information on all surface water intakes and their corresponding sampling points for all public water systems. The Safe Drinking Water Information System (SDWIS) database does not have any designation for municipal public water systems, but there is a field to capture if the water system is a local government. We cross referenced the list of municipalities on the League of Municipalities website and deleted public water systems that were not included on their list, except for the Town of Oakboro. Oakboro, from what we could see on the town website, should be included in our list of municipal public water systems.

Please distribute the list as appropriate and let me know if you have any questions or need additional information.

cc: Linda Culpepper
Jay Frick
Rebecca Sadosky
Jeffrey Talbott


State of North Carolina | Environmental Quality | Water Resources
Public Water Supply Section
1634 Mail Service Center | Raleigh, North Carolina 27699-1634
919-707-9100 | Lab Fax 919 715 6637 | Admin Fax 919 715 4374 | www.ncwater.org/pws/

From: Gregson, Jim
To: [Warren, Jeffrey Dennis](#)
Subject: Surface Water Intake List
Date: Monday, June 25, 2018 4:47:45 PM
Attachments: [2018 06 21 Surface Water Intakes For Collaboratory.xls](#)

One correction from last list. Town of Andrews Murphy interconnect removed from list.

Jim Gregson
Interim Deputy Director
Division of Water Resources
Department of Environmental Quality

1611 Mail Service Center
Raleigh, NC 27699-1611
[919.707.9147](tel:919.707.9147) Direct
Jim.gregson@ncdenr.gov



*Email correspondence to and from this address is subject to the
North Carolina Public Records Law and may be disclosed to third parties.*

Public surface water intakes eligible for sampling submitted to Collaboratory by NC DEQ on June 25, 2018 (190 surface water intakes). This list is amended from the first list of surface water intakes from NC DEQ submitted on June 21, 2015 and amended by NC DEQ on June 25, 2018 to remove from the list the Town of Andrews Murphy interconnect surface water intake (i.e., original list contained 191 surface water intakes and amended list contained 190 surface water intakes).

Water System ID	Water System Name	WS Activity Status Code	Water System Federal Type Code	County	Owner Type Code	Facility ID	Facility Name
NC0100010	BURNSVILLE, TOWN OF	A	C	YANCEY	L	S01	CANE RIVER
NC0100010	BURNSVILLE, TOWN OF	A	C	YANCEY	L	S02	BOLENS CREEK
NC0105015	JEFFERSON, TOWN OF	A	C	ASHE	L	S01	SO FORK NEW RIVER
NC0111010	ASHEVILLE CITY OF	A	C	BUNCOMBE	L	S01	NORTH FORK RESERVOIR
NC0111010	ASHEVILLE CITY OF	A	C	BUNCOMBE	L	S02	BEE TREE RESERVOIR
NC0111010	ASHEVILLE CITY OF	A	C	BUNCOMBE	L	S03	MILLS RIVER
NC0111010	ASHEVILLE CITY OF	A	C	BUNCOMBE	L	S05	FRENCH BROAD
NC0111015	WOODFIN SANITARY WATER AND SEWER	A	C	BUNCOMBE	L	S01	SUGAR FORK
NC0111025	WEAVERVILLE, TOWN OF	A	C	BUNCOMBE	L	S04	IVY RIVER
NC0112010	VALDESE, TOWN OF	A	C	BURKE	L	S01	LAKE RHODISS
NC0112015	MORGANTON CITY OF	A	C	BURKE	L	S01	CATAWBA RIVER
NC0113010	CONCORD, CITY OF	A	C	CABARRUS	L	S01	LAKE FISHER/COLDWATER CRK
NC0113010	CONCORD, CITY OF	A	C	CABARRUS	L	S02	LAKE CONCORD/COLDWATER CR
NC0113010	CONCORD, CITY OF	A	C	CABARRUS	L	S03	LAKE DON T HOWELL
NC0113020	MOUNT PLEASANT, TOWN OF (WSACC)	A	C	CABARRUS	L	S01	DUTCH BUFFALO CREEK

NC0113020	MOUNT PLEASANT, TOWN OF (WSACC)	A	C	CABARRUS	L	S02	BLACK RUN CRK RESERVIOR
NC0114010	LENOIR, CITY OF	A	C	CALDWELL	L	S01	LAKE RHODHISS
NC0114030	GRANITE FALLS, TOWN OF	A	C	CALDWELL	L	S01	LAKE RHODHISS
NC0118010	HICKORY CITY OF	A	C	CATAWBA	L	S01	CATAWBA RIV/LAKE HICKORY
NC0118015	NEWTON, CITY OF	A	C	CATAWBA	L	S01	JACOB FORK/CATAWBA RIV
NC0118015	NEWTON, CITY OF	A	C	CATAWBA	L	S02	CITY LAKE
NC0120010	MURPHY, TOWN OF	A	C	CHEROKEE	L	S01	HIWASSEE RIVER
NC0120020	ANDREWS, TOWN OF	A	C	CHEROKEE	L	S01	BEAVER CREEK RESERVOIR
NC0120020	ANDREWS, TOWN OF	A	C	CHEROKEE	L	S02	DAN HOLLAND CREEK RESERVIOR
NC0123010	SHELBY, CITY OF	A	C	CLEVELAND	L	S01	FIRST BROAD RIVER
NC0123020	KINGS MOUNTAIN, TOWN OF	A	C	CLEVELAND	L	S01	MOSS LAKE
NC0123055	CLEVELAND COUNTY WATER	A	C	CLEVELAND	L	S01	1ST BROAD RIVER
NC0123055	CLEVELAND COUNTY WATER	A	C	CLEVELAND	L	S02	KNOB CREEK
NC0136010	TWO RIVERS UTILITIES	A	C	GASTON	L	S02	MTN ISLAND LAKE
NC0136015	BELMONT, CITY OF	A	C	GASTON	L	S01	CATAWBA RIV-LAKE WYLIE
NC0136020	MOUNT HOLLY, CITY OF	A	C	GASTON	L	S01	MOUNTAIN ISLAND LAKE
NC0136025	BESSEMER CITY, CITY OF	A	C	GASTON	L	S10	LONG CREEK
NC0136025	BESSEMER CITY, CITY OF	A	C	GASTON	L	S11	ARROWWOOD LAKE
NC0136030	CHERRYVILLE, CITY OF	A	C	GASTON	L	S01	INDIAN CREEK
NC0136065	DALLAS, TOWN OF	A	C	GASTON	L	S01	S FORK CATAWBA RIVER
NC0138010	ROBBINSVILLE, TOWN OF	A	C	GRAHAM	L	S02	ROCK CREEK
NC0138010	ROBBINSVILLE, TOWN OF	A	C	GRAHAM	L	S03	BURGIN CREEK
NC0138010	ROBBINSVILLE, TOWN OF	A	C	GRAHAM	L	S04	LONG CREEK

NC0138101	TOWN OF FONTANA DAM	A	C	GRAHAM	L	S01	FONTANA LAKE
NC0144010	WAYNESVILLE, TOWN OF	A	C	HAYWOOD	L	S01	ALLENS CREEK RESERVOIR
NC0144015	CANTON, TOWN OF	A	C	HAYWOOD	L	S01	PIGEON RIVER
NC0144040	MAGGIE VALLEY SANITARY DIST	A	C	HAYWOOD	L	S01	CAMBELL'S CREEK
NC0144040	MAGGIE VALLEY SANITARY DIST	A	C	HAYWOOD	L	S02	JONATHANS CREEK
NC0145010	HENDERSONVILLE, CITY OF	A	C	HENDERSON	L	S01	MILLS RIVER
NC0145010	HENDERSONVILLE, CITY OF	A	C	HENDERSON	L	S2A	BRADLEY CREEK
NC0145010	HENDERSONVILLE, CITY OF	A	C	HENDERSON	L	S2B	NO FORK-MILLS RIVER
NC0149010	STATESVILLE, CITY OF	A	C	IREDELL	L	S01	SOUTH FORK YADKIN RIVER
NC0149010	STATESVILLE, CITY OF	A	C	IREDELL	L	SW2	LOOKOUT SHOALS
NC0149015	MOORESVILLE TOWN OF	A	C	IREDELL	L	S01	LAKE NORMAN
NC0150035	TUCKASEIGEE WATER & SEWER AUTH	A	C	JACKSON	L	S01	TUCKASEGEE RIVER
NC0150116	WESTERN CAROLINA UNIV WTP	A	C	JACKSON	S	S01	TUCKASEIGEE RIVER
NC0155010	LINCOLNTON, CITY OF	A	C	LINCOLN	L	S01	S FORK CATAWBA RIVER
NC0155035	LINCOLN COUNTY WTP	A	C	LINCOLN	L	S01	LAKE NORMAN
NC0156010	MARION, CITY OF	A	C	MCDOWELL	L	S01	BUCK CREEK
NC0156010	MARION, CITY OF	A	C	MCDOWELL	L	S02	MACKEY CREEK
NC0156010	MARION, CITY OF	A	C	MCDOWELL	L	S03	CLEAR CREEK
NC0157010	FRANKLIN, TOWN OF	A	C	MACON	L	S01	CARTOOGECHAYE RIVER
NC0157015	HIGHLANDS, TOWN OF	A	C	MACON	L	S01	BIG CREEK
NC0157015	HIGHLANDS, TOWN OF	A	C	MACON	L	S02	LAKE SEQUOIA
NC0157015	HIGHLANDS, TOWN OF	A	C	MACON	L	S03	LAKE SEQUOIA
NC0158010	MARS HILL, TOWN OF	A	C	MADISON	L	S01	LAUREL CREEK RESERVIOR

NC0158010	MARS HILL, TOWN OF	A	C	MADISON	L	S02	CARTER COVE RESERVOIR
NC0160010	CHARLOTTE WATER	A	C	MECKLENBURG	L	S05	MT ISLAND LAKE/CAT RIVER
NC0160010	CHARLOTTE WATER	A	C	MECKLENBURG	L	S06	LAKE NORMAN
NC0161010	SPRUCE PINE, TOWN OF	A	C	MITCHELL	L	001	BEAVER CREEK
NC0161010	SPRUCE PINE, TOWN OF	A	C	MITCHELL	L	002	TOE RIVER
NC0175010	TRYON, TOWN OF	A	C	POLK	L	S01	LAKE LANIER
NC0175010	TRYON, TOWN OF	A	C	POLK	L	S02	BIG FALLS CREEK
NC0175010	TRYON, TOWN OF	A	C	POLK	L	S3A	FORK CREEK
NC0175010	TRYON, TOWN OF	A	C	POLK	L	S3B	COLT CREEK
NC0180010	SALISBURY-ROWAN	A	C	ROWAN	L	S01	YADKIN RIVER
NC0180065	KANNAPOLIS, CITY OF	A	C	ROWAN	L	K01	KANNAPOLIS LAKE
NC0180065	KANNAPOLIS, CITY OF	A	C	ROWAN	L	K02	CODDLE CREEK
NC0180065	KANNAPOLIS, CITY OF	A	C	ROWAN	L	K03	SECOND CREEK/BACK CREEK
NC0181010	FOREST CITY, TOWN OF	A	C	RUTHERFORD	L	S01	2ND BROAD RIVER
NC0181035	BROAD RIVER WATER AUTHORITY	A	C	RUTHERFORD	L	S01	BROAD RIVER
NC0184010	ALBEMARLE, CITY OF	A	C	STANLY	L	OW1	NARROWS RESERVOIR/BADIN L
NC0184010	ALBEMARLE, CITY OF	A	C	STANLY	L	TT1	TUCKERTOWN RESERVOIR
NC0184015	NORWOOD, TOWN OF	A	C	STANLY	L	RW1	LAKE TILLERY
NC0187010	BRYSON CITY, TOWN OF	A	C	SWAIN	L	S01	DEEP CREEK
NC0188010	BREVARD, CITY OF	A	C	TRANSYLVANIA	L	S01	CATHEY'S CREEK
NC0188010	BREVARD, CITY OF	A	C	TRANSYLVANIA	L	S01	CATHEY'S CREEK
NC0190010	MONROE, CITY OF	A	C	UNION	L	001	LAKE TWITTY
NC0195010	BOONE, TOWN OF	A	C	WATAUGA	L	SF2	S FORK NEW RIV

NC0195010	BOONE, TOWN OF	A	C	WATAUGA	L	WC1	WINKLERS CREEK
NC0195020	BLOWING ROCK, TOWN OF	A	C	WATAUGA	L	S01	TOWN LAKE
NC0195020	BLOWING ROCK, TOWN OF	A	C	WATAUGA	L	S02	LAKE CHETOLA
NC0195101	APPALACHIAN STATE UNIV WTP	A	C	WATAUGA	S	RW1	NORRIS BRANCH
NC0195101	APPALACHIAN STATE UNIV WTP	A	C	WATAUGA	S	RW2	HOWARDS CREEK
NC0195104	BEECH MOUNTAIN, TOWN OF	A	C	WATAUGA	L	RW1	BUCKEYE CREEK
NC0197010	NORTH WILKESBORO, TOWN OF	A	C	WILKES	L	FL1	REDDIES RIVER
NC0197025	WILKESBORO, TOWN OF	A	C	WILKES	L	RW1	YADKIN RIVER
NC0201010	BURLINGTON, CITY OF	A	C	ALAMANCE	L	RW1	LAKE MACKINTOSH
NC0201010	BURLINGTON, CITY OF	A	C	ALAMANCE	L	RW2	STONEY CREEK RESERVOIR
NC0201015	GRAHAM, CITY OF	A	C	ALAMANCE	L	RW1	GRAHAM-MEBANE LAKE
NC0217010	YANCEYVILLE, TOWN OF	A	C	CASWELL	L	001	FARMER LAKE
NC0229010	LEXINGTON, CITY OF	A	C	DAVIDSON	L	TA1	THOM-A-LEX LAKE
NC0229020	THOMASVILLE, CITY OF	A	C	DAVIDSON	L	RW1	TOM-A-LEX LAKE
NC0229025	DAVIDSON WATER INC	A	C	DAVIDSON	P	RW1	YADKIN RIVER
NC0229030	DENTON, TOWN OF	A	C	DAVIDSON	L	RW1	YADKIN RIVER
NC0230010	MOCKSVILLE, TOWN OF	A	C	DAVIE	L	WP1	HUNTING CREEK
NC0230015	DAVIE COUNTY WATER SYSTEM	A	C	DAVIE	L	S01	SOUTH YADKIN RIVER
NC0230015	DAVIE COUNTY WATER SYSTEM	A	C	DAVIE	L	S02	SOUTH YADKIN TAILRACE
NC0230015	DAVIE COUNTY WATER SYSTEM	A	C	DAVIE	L	S03	YADKIN RIVER
NC0234010	WINSTON-SALEM, CITY OF	A	C	FORSYTH	L	001	YADKIN RIVER (IDOLS DAM)
NC0234010	WINSTON-SALEM, CITY OF	A	C	FORSYTH	L	002	YADKIN RIVER (PWSWANN WTP DAM)
NC0234010	WINSTON-SALEM, CITY OF	A	C	FORSYTH	L	010	SALEM LAKE

NC0235010	FRANKLINTON, TOWN OF	A	C	FRANKLIN	L	S01	TAYLOR CREEK
NC0235010	FRANKLINTON, TOWN OF	A	C	FRANKLIN	L	S02	CEDAR CREEK
NC0235015	LOUISBURG, TOWN OF	A	C	FRANKLIN	L	R01	TAR RIVER
NC0239107	SOUTH GRANVILLE WTR&SEWER AUTHORITY	A	C	GRANVILLE	L	S01	KNAPP OF REEDS CRK
NC0241010	GREENSBORO, CITY OF	A	C	GUILFORD	L	LB2	LAKE BRANDT
NC0241010	GREENSBORO, CITY OF	A	C	GUILFORD	L	LT1	LAKE TOWNSEND
NC0241020	HIGH POINT, CITY OF	A	C	GUILFORD	L	RW1	CITY LAKE
NC0241020	HIGH POINT, CITY OF	A	C	GUILFORD	L	RW2	OAK HOLLOW LAKE
NC0273010	ROXBORO, CITY OF	A	C	PERSON	L	S01	CITY LAKE
NC0273010	ROXBORO, CITY OF	A	C	PERSON	L	S02	LAKE ROXBORO
NC0273409	ROXBORO STEAM PLANT	A	NTNC	PERSON	P	S01	HYCO LAKE
NC0276010	ASHEBORO, CITY OF	A	C	RANDOLPH	L	003	LAKE BUNCH
NC0276010	ASHEBORO, CITY OF	A	C	RANDOLPH	L	004	LAKE LUCAS
NC0276010	ASHEBORO, CITY OF	A	C	RANDOLPH	L	005	LAKE REESE
NC0276020	RAMSEUR, TOWN OF	A	C	RANDOLPH	L	001	SANDY CREEK RESERVOIR
NC0279010	EDEN, CITY OF	A	C	ROCKINGHAM	L	R01	DAN RIVER
NC0279020	REIDSVILLE, CITY OF	A	C	ROCKINGHAM	L	RW1	LAKE REIDSVILLE
NC0279025	MAYODAN, TOWN OF	A	C	ROCKINGHAM	L	281	MAYO RIVER
NC0279030	MADISON, TOWN OF	A	C	ROCKINGHAM	L	RW1	DAN RIVER
NC0285010	KING, CITY OF	A	C	STOKES	L	RW1	YADKIN RIVER
NC0286010	MOUNT AIRY, CITY OF	A	C	SURRY	L	246	STEWARTS CREEK
NC0286010	MOUNT AIRY, CITY OF	A	C	SURRY	L	426	LOVILLS CREEK
NC0286020	ELKIN, TOWN OF	A	C	SURRY	L	S01	BIG ELKIN CREEK

NC0286020	ELKIN, TOWN OF	A	C	SURRY	L	S02	YADKIN RIVER
NC0286025	PILOT MOUNTAIN, TOWN OF	A	C	SURRY	L	RW1	TOMS CREEK
NC0286030	DOBSON, TOWN OF	A	C	SURRY	L	007	FISHER RIVER
NC0291010	HENDERSON-KERR LAKE REG WTR	A	C	VANCE	L	S01	KERR LAKE
NC0299010	JONESVILLE, TOWN OF	A	C	YADKIN	L	009	YADKIN RIVER
NC0299015	YADKINVILLE, TOWN OF	A	C	YADKIN	L	RW1	SOUTH DEEP CREEK
NC0304010	ANSON COUNTY WATER SYSTEM	A	C	ANSON	L	S01	PEE DEE RIVER
NC0319010	SILER CITY, CITY OF	A	C	CHATHAM	L	S01	ROCKY RIVER (LOWER)
NC0319015	PITTSBORO, TOWN OF	A	C	CHATHAM	L	S01	HAW RIVER
NC0319126	CHATHAM CO-NORTH	A	C	CHATHAM	L	S01	JORDAN LAKE
NC0326010	FAYETTEVILLE PUBLIC WORKS COMM	A	C	CUMBERLAND	L	S01	CAPE FEAR RIVER
NC0326010	FAYETTEVILLE PUBLIC WORKS COMM	A	C	CUMBERLAND	L	S02	GLENVILLE LAKE
NC0332010	DURHAM, CITY OF	A	C	DURHAM	L	S01	LITTLE RIVER RESERVOIR
NC0332010	DURHAM, CITY OF	A	C	DURHAM	L	S02	LAKE MICHIE
NC0343010	DUNN, CITY OF	A	C	HARNETT	L	S01	CAPE FEAR RIVER
NC0343045	HARNETT CO DEPT OF PUBLIC UTIL	A	C	HARNETT	L	S01	CAPE FEAR RIVER
NC0351010	SMITHFIELD, TOWN OF	A	C	JOHNSTON	L	S01	NEUSE RIVER
NC0351070	JOHNSTON CO-WEST	A	C	JOHNSTON	L	S01	NEUSE RIVER
NC0353010	SANFORD, CITY OF	A	C	LEE	L	S01	CAPE FEAR RIVER
NC0353130	PILGRIM'S PRIDE WATER SYSTEM	A	NTNC	LEE	P	S01	DEEP RIVER
NC0362010	MONTGOMERY COUNTY WATER SYSTEM	A	C	MONTGOMERY	L	S01	LAKE TILLERY
NC0363010	SOUTHERN PINES, TOWN OF	A	C	MOORE	L	S01	DROWNING CREEK
NC0363025	CARTHAGE, TOWN OF	A	C	MOORE	L	S01	TOWN POND

NC0363025	CARTHAGE, TOWN OF	A	C	MOORE	L	S02	NICKS CREEK
NC0368010	ORANGE WATER & SEWER AUTHORITY	A	C	ORANGE	L	S01	UNIVERSITY LAKE
NC0368010	ORANGE WATER & SEWER AUTHORITY	A	C	ORANGE	L	S02	CANE CREEK RESERVOIR
NC0368015	HILLSBOROUGH, TOWN OF	A	C	ORANGE	L	S01	ENO RIVER
NC0368020	ORANGE-ALAMANCE WATER SYSTEM	A	C	ORANGE	P	S01	ENO RIVER/CORP LAKE
NC0377010	HAMLET WATER SYSTEM	A	C	RICHMOND	L	S01	WATER LAKE
NC0377015	ROCKINGHAM, CITY OF	A	C	RICHMOND	L	S01	ROBERDEL LAKE
NC0377015	ROCKINGHAM, CITY OF	A	C	RICHMOND	L	S04	CITY LAKE DAM
NC0377109	RICHMOND COUNTY WATER SYSTEM	A	C	RICHMOND	L	S01	PEE DEE RIVER
NC0378010	LUMBERTON, CITY OF	A	C	ROBESON	L	S01	LUMBER RIVER
NC0378010	LUMBERTON, CITY OF	A	C	ROBESON	L	S01	LUMBER RIVER
NC0392010	RALEIGH, CITY OF	A	C	WAKE	L	S01	FALLS OF THE NEUSE
NC0392010	RALEIGH, CITY OF	A	C	WAKE	L	S02	LAKE BENSON
NC0392020	CARY, TOWN OF	A	C	WAKE	L	S01	JORDAN LAKE
NC0392992	HARRIS NUCLEAR PLANT WATER SYSTEM	A	NTNC	WAKE	P	S01	HARRIS LAKE
NC0392992	HARRIS NUCLEAR PLANT WATER SYSTEM	A	NTNC	WAKE	P	S02	HARRIS LAKE AUX RESERV
NC0410045	BRUNSWICK COUNTY WATER SYSTEM	A	C	BRUNSWICK	L	S01	CAPE FEAR RIVER
NC0424820	INTERNATIONAL PAPER COMPANY	A	NTNC	COLUMBUS	P	S01	CAPE FEAR RIVER
NC0433010	TARBORO, TOWN OF	A	C	EDGEcombe	L	S01	TAR RIVER
NC0442010	ROANOKE RAPIDS SANITARY DIST	A	C	HALIFAX	L	S01	ROANOKE RAPIDS LAKE
NC0442010	ROANOKE RAPIDS SANITARY DIST	A	C	HALIFAX	L	S02	ROANOKE RIVER
NC0442020	WELDON WATER SYSTEM	A	C	HALIFAX	L	S01	ROANOKE RIVER
NC0442025	ENFIELD WATER SYSTEM	A	C	HALIFAX	L	S01	FISHING CREEK

NC0464010	ROCKY MOUNT, CITY OF	A	C	NASH	L	S01	TAR R @ SUNSET
NC0464010	ROCKY MOUNT, CITY OF	A	C	NASH	L	S02	TAR R @ RESERVR
NC0465010	CFPUA-WILMINGTON	A	C	NEW HANOVER	L	KB1	CAPE FEAR RIVER KINGS BLUFF
NC0465010	CFPUA-WILMINGTON	A	C	NEW HANOVER	L	LCF	LOWER CAPE FEAR WSA - KINGS BLUFF
NC0474010	GREENVILLE UTILITIES COMM	A	C	PITT	L	S01	TAR RIVER
NC0496010	GOLDSBORO, CITY OF	A	C	WAYNE	L	NR1	NEUSE RIVER
NC0498010	WILSON, CITY OF	A	C	WILSON	L	S01	LAWNDALE DR @TOISNOT RESEVOIR
NC0498010	WILSON, CITY OF	A	C	WILSON	L	S02	WIGGINS MILL POND
NC3076010	PIEDMONT TRIAD REGIONAL	A	C	RANDOLPH	L	S01	RANDLEMAN LAKE
NC4051018	JOHNSTON CO-EAST	A	C	JOHNSTON	L	S01	NEUSE RIVER
NC5009012	BLADEN BLUFFS WATER SYSTEM	A	NTNC	BLADEN	P	S01	CAPE FEAR RIVER
NC6054001	NEUSE REGIONAL WTR & SWR AUTH	A	C	LENOIR	P	S01	NEUSE RIVER
NC6059015	MARTIN CO REGIONAL WASA	A	C	MARTIN	L	S01	ROANOKE RIVER
NC7071011	PENDER COUNTY UTILITIES	A	C	PENDER	L	S02	LCFWSA

Public water wells eligible for sampling submitted to Collaboratory by NC DEQ on 21 June, 2018 (688 total wells from 158 individual municipalities).

Water System ID	Water System Name	WS Activity Status Code	Water System Federal Type Code	County	Owner Type Code	Facility ID	Facility Name
-----------------	-------------------	-------------------------	--------------------------------	--------	-----------------	-------------	---------------

NC0103010	SPARTA, TOWN OF	A	C	ALLEGHANY	L	W01	WELL #1
NC0103010	SPARTA, TOWN OF	A	C	ALLEGHANY	L	W01	WELL #1
NC0103010	SPARTA, TOWN OF	A	C	ALLEGHANY	L	W02	WELL #2
NC0103010	SPARTA, TOWN OF	A	C	ALLEGHANY	L	W02	WELL #2
NC0103010	SPARTA, TOWN OF	A	C	ALLEGHANY	L	W08	WELL #8
NC0103010	SPARTA, TOWN OF	A	C	ALLEGHANY	L	W08	WELL #8
NC0103010	SPARTA, TOWN OF	A	C	ALLEGHANY	L	W09	WELL #9
NC0103010	SPARTA, TOWN OF	A	C	ALLEGHANY	L	W09	WELL #9
NC0103010	SPARTA, TOWN OF	A	C	ALLEGHANY	L	W10	WELL #10
NC0103010	SPARTA, TOWN OF	A	C	ALLEGHANY	L	W10	WELL #10
NC0103010	SPARTA, TOWN OF	A	C	ALLEGHANY	L	W15	WELL #15
NC0103010	SPARTA, TOWN OF	A	C	ALLEGHANY	L	W17	WELL #17
NC0103010	SPARTA, TOWN OF	A	C	ALLEGHANY	L	W17	WELL #17
NC0103010	SPARTA, TOWN OF	A	C	ALLEGHANY	L	W18	WELL #18
NC0103010	SPARTA, TOWN OF	A	C	ALLEGHANY	L	W19	WELL #19
NC0103010	SPARTA, TOWN OF	A	C	ALLEGHANY	L	W19	WELL #19
NC0105010	WEST JEFFERSON, TOWN OF	A	C	ASHE	L	SP1	SPRING AT MT JEFFERSON
NC0105010	WEST JEFFERSON, TOWN OF	A	C	ASHE	L	W10	WELL #10
NC0105010	WEST JEFFERSON, TOWN OF	A	C	ASHE	L	W11	OAKWOOD WELL
NC0105010	WEST JEFFERSON, TOWN OF	A	C	ASHE	L	W3A	WELL #3A-WEST SEVENTH ST
NC0105010	WEST JEFFERSON, TOWN OF	A	C	ASHE	L	W7A	WELL# 7A
NC0105010	WEST JEFFERSON, TOWN OF	A	C	ASHE	L	W7B	WELL #7B
NC0105010	WEST JEFFERSON, TOWN OF	A	C	ASHE	L	WL3	WELL #3-SEVENTH ST

NC0105010	WEST JEFFERSON, TOWN OF	A	C	ASHE	L	WL4	WELL# 4-JEFFERSONWOOD
NC0105010	WEST JEFFERSON, TOWN OF	A	C	ASHE	L	WL5	WELL #5-MT JEFFERSON RD
NC0105010	WEST JEFFERSON, TOWN OF	A	C	ASHE	L	WL7	WELL #7-TOWN PARK
NC0105010	WEST JEFFERSON, TOWN OF	A	C	ASHE	L	WL8	WOODS WELL #8
NC0105015	JEFFERSON, TOWN OF	A	C	ASHE	L	W06	WELL #6 WAUGH
NC0105015	JEFFERSON, TOWN OF	A	C	ASHE	L	W07	WELL #7 TYSON
NC0105015	JEFFERSON, TOWN OF	A	C	ASHE	L	W08	WELL #8 WOOD CROFT
NC0105020	LANSING, TOWN OF	A	C	ASHE	L	S05	WELL #5
NC0105020	LANSING, TOWN OF	A	C	ASHE	L	S07	WELL #7
NC0105020	LANSING, TOWN OF	A	C	ASHE	L	S09	WELL #9
NC0106010	CROSSNORE, TOWN OF	A	C	AVERY	L	W03	WELL #3
NC0106010	CROSSNORE, TOWN OF	A	C	AVERY	L	W04	WELL #4
NC0106015	BANNER ELK, TOWN OF	A	C	AVERY	L	W01	WELL #1
NC0106015	BANNER ELK, TOWN OF	A	C	AVERY	L	W02	WELL #2 (COOK WELL)
NC0106015	BANNER ELK, TOWN OF	A	C	AVERY	L	W03	WELL #3
NC0106015	BANNER ELK, TOWN OF	A	C	AVERY	L	W05	WELL #5
NC0106020	NEWLAND, TOWN OF	A	C	AVERY	L	W01	WELL #1
NC0106020	NEWLAND, TOWN OF	A	C	AVERY	L	W02	WELL #2
NC0106020	NEWLAND, TOWN OF	A	C	AVERY	L	W03	WELL #3
NC0106020	NEWLAND, TOWN OF	A	C	AVERY	L	W04	WELL #4
NC0106020	NEWLAND, TOWN OF	A	C	AVERY	L	W05	WELL #5
NC0106025	ELK PARK, TOWN OF	A	C	AVERY	L	W01	WELL #1
NC0106025	ELK PARK, TOWN OF	A	C	AVERY	L	W02	WELL #2

NC0407010	WASHINGTON, CITY OF	A	C	BEAUFORT	L	W01	WINSTEAD SITE
NC0407010	WASHINGTON, CITY OF	A	C	BEAUFORT	L	W02	DOUGLAS CROSS RDS
NC0407010	WASHINGTON, CITY OF	A	C	BEAUFORT	L	W03	MIDWAY
NC0407010	WASHINGTON, CITY OF	A	C	BEAUFORT	L	W04	FORESTRY SERVICE
NC0407010	WASHINGTON, CITY OF	A	C	BEAUFORT	L	W05	GARRIS
NC0407010	WASHINGTON, CITY OF	A	C	BEAUFORT	L	W06	REGIONAL WTP WELL
NC0407010	WASHINGTON, CITY OF	A	C	BEAUFORT	L	W07	TANKARD FARM
NC0407010	WASHINGTON, CITY OF	A	C	BEAUFORT	L	W08	HASSELL
NC0407015	BELHAVEN WATER SYSTEM	A	C	BEAUFORT	L	W01	WELL #1
NC0407015	BELHAVEN WATER SYSTEM	A	C	BEAUFORT	L	W02	WELL #2
NC0407015	BELHAVEN WATER SYSTEM	A	C	BEAUFORT	L	W03	WELL #3
NC0407020	AURORA WATER SYSTEM	A	C	BEAUFORT	L	W01	WELL #1
NC0407020	AURORA WATER SYSTEM	A	C	BEAUFORT	L	W02	WELL #2
NC0407025	CHOCOWINITY WATER SYSTEM	A	C	BEAUFORT	L	W03	WELL# 3
NC0407025	CHOCOWINITY WATER SYSTEM	A	C	BEAUFORT	L	W04	WELL #4
NC0407025	CHOCOWINITY WATER SYSTEM	A	C	BEAUFORT	L	W05	WELL #5
NC0407025	CHOCOWINITY WATER SYSTEM	A	C	BEAUFORT	L	W2A	WELL# 2A
NC0407030	BATH WATER SYSTEM	A	C	BEAUFORT	L	W01	WELL #1
NC0408010	WINDSOR, TOWN OF	A	C	BERTIE	L	SC2	WELL #2 SUTTON DR
NC0408010	WINDSOR, TOWN OF	A	C	BERTIE	L	SC3	WELL #3 WALL ST
NC0408010	WINDSOR, TOWN OF	A	C	BERTIE	L	SC5	COUNTRY CLUB WELL #5
NC0408010	WINDSOR, TOWN OF	A	C	BERTIE	L	W6B	WELL #6B
NC0408010	WINDSOR, TOWN OF	A	C	BERTIE	L	W6C	WELL #6C

NC0408015	AULANDER, TOWN OF	A	C	BERTIE	L	002	WELL #2
NC0408015	AULANDER, TOWN OF	A	C	BERTIE	L	003	WELL #3
NC0408040	POWELLSVILLE, TOWN OF	A	C	BERTIE	L	W01	WELL #1 WYNN ST
NC0408040	POWELLSVILLE, TOWN OF	A	C	BERTIE	L	W02	WELL #2 WATERS ST
NC0309010	ELIZABETHTOWN, TOWN OF	A	C	BLADEN	L	S05	WELL #5
NC0309010	ELIZABETHTOWN, TOWN OF	A	C	BLADEN	L	W04	WELL #4
NC0309010	ELIZABETHTOWN, TOWN OF	A	C	BLADEN	L	W1A	WELL #1A
NC0309010	ELIZABETHTOWN, TOWN OF	A	C	BLADEN	L	W1A	WELL #1A
NC0309010	ELIZABETHTOWN, TOWN OF	A	C	BLADEN	L	W3A	WELL #3A
NC0309015	BLADENBORO, TOWN OF	A	C	BLADEN	L	S09	WELL# 9
NC0309015	BLADENBORO, TOWN OF	A	C	BLADEN	L	W07	WELL #7
NC0309015	BLADENBORO, TOWN OF	A	C	BLADEN	L	W08	WELL #8
NC0309020	CLARKTON, TOWN OF	A	C	BLADEN	L	W01	WELL #1
NC0309020	CLARKTON, TOWN OF	A	C	BLADEN	L	W02	WELL #2
NC0309020	CLARKTON, TOWN OF	A	C	BLADEN	L	W03	WELL #3
NC0309025	DUBLIN, TOWN OF	A	C	BLADEN	L	W03	WELL #3
NC0309030	WHITE LAKE, TOWN OF	A	C	BLADEN	L	W01	WELL #1
NC0309030	WHITE LAKE, TOWN OF	A	C	BLADEN	L	W02	WELL #2
NC0309030	WHITE LAKE, TOWN OF	A	C	BLADEN	L	W03	WELL #3A
NC0309050	EAST ARCADIA, TOWN OF	A	C	BLADEN	L	W01	WELL #1
NC0309050	EAST ARCADIA, TOWN OF	A	C	BLADEN	L	W03	WELL #3
NC0410130	THE VILLAGE OF BALD HEAD ISLAND	A	C	BRUNSWICK	L	CFS	CAPE FEAR STATION #1
NC0410130	THE VILLAGE OF BALD HEAD ISLAND	A	C	BRUNSWICK	L	CW1	CENTRAL WELL #1

NC0410130	THE VILLAGE OF BALD HEAD ISLAND	A	C	BRUNSWICK	L	CW2	CENTRAL WELL #2
NC0410130	THE VILLAGE OF BALD HEAD ISLAND	A	C	BRUNSWICK	L	ET1	EDWARD TEACH #1
NC0410130	THE VILLAGE OF BALD HEAD ISLAND	A	C	BRUNSWICK	L	ET2	EDWARD TEACH #2
NC0410130	THE VILLAGE OF BALD HEAD ISLAND	A	C	BRUNSWICK	L	FW1	FEDERAL WELL #1
NC0410130	THE VILLAGE OF BALD HEAD ISLAND	A	C	BRUNSWICK	L	FW2	FEDERAL WELL #2
NC0410130	THE VILLAGE OF BALD HEAD ISLAND	A	C	BRUNSWICK	L	FW3	FEDERAL WELL #3
NC0410130	THE VILLAGE OF BALD HEAD ISLAND	A	C	BRUNSWICK	L	LG1	LAUGHING GULL #1
NC0410130	THE VILLAGE OF BALD HEAD ISLAND	A	C	BRUNSWICK	L	MW1	MUSCADINE #1
NC0410130	THE VILLAGE OF BALD HEAD ISLAND	A	C	BRUNSWICK	L	MW2	MUSCADINE #2
NC0410130	THE VILLAGE OF BALD HEAD ISLAND	A	C	BRUNSWICK	L	OW1	OFFICE WELL #1
NC0410130	THE VILLAGE OF BALD HEAD ISLAND	A	C	BRUNSWICK	L	RJ2	ROYAL JAMES WELL #2
NC0111020	BLACK MOUNTAIN, TOWN OF	A	C	BUNCOMBE	L	W01	WELL #1
NC0111020	BLACK MOUNTAIN, TOWN OF	A	C	BUNCOMBE	L	W03	WELL #3
NC0111020	BLACK MOUNTAIN, TOWN OF	A	C	BUNCOMBE	L	W04	WELL #4
NC0111020	BLACK MOUNTAIN, TOWN OF	A	C	BUNCOMBE	L	W05	WELL #5
NC0111020	BLACK MOUNTAIN, TOWN OF	A	C	BUNCOMBE	L	W10	WELL #10
NC0111020	BLACK MOUNTAIN, TOWN OF	A	C	BUNCOMBE	L	W11	WELL #11
NC0111020	BLACK MOUNTAIN, TOWN OF	A	C	BUNCOMBE	L	W13	WELL #13
NC0111020	BLACK MOUNTAIN, TOWN OF	A	C	BUNCOMBE	L	W16	WELL #16
NC0111020	BLACK MOUNTAIN, TOWN OF	A	C	BUNCOMBE	L	W17	WELL #17
NC0111020	BLACK MOUNTAIN, TOWN OF	A	C	BUNCOMBE	L	W18	WELL #18
NC0111020	BLACK MOUNTAIN, TOWN OF	A	C	BUNCOMBE	L	W19	WELL #19
NC0111020	BLACK MOUNTAIN, TOWN OF	A	C	BUNCOMBE	L	W20	WELL #20

NC0111484	MONTREAT WATER SYSTEM	A	C	BUNCOMBE	L	011	WELL #5
NC0111484	MONTREAT WATER SYSTEM	A	C	BUNCOMBE	L	012	WELL A (WELL #7)
NC0111484	MONTREAT WATER SYSTEM	A	C	BUNCOMBE	L	013	WELL B (WELL #8)
NC0111484	MONTREAT WATER SYSTEM	A	C	BUNCOMBE	L	014	WELL #1
NC0111484	MONTREAT WATER SYSTEM	A	C	BUNCOMBE	L	016	WELL #6
NC0111484	MONTREAT WATER SYSTEM	A	C	BUNCOMBE	L	017	WELL #3
NC0111484	MONTREAT WATER SYSTEM	A	C	BUNCOMBE	L	018	WELL #2
NC0111484	MONTREAT WATER SYSTEM	A	C	BUNCOMBE	L	019	WELL #A01
NC0111484	MONTREAT WATER SYSTEM	A	C	BUNCOMBE	L	020	WELL #A02
NC0111484	MONTREAT WATER SYSTEM	A	C	BUNCOMBE	L	021	WELL #A03
NC0111484	MONTREAT WATER SYSTEM	A	C	BUNCOMBE	L	022	WELL #A04
NC0113025	HARRISBURG, TOWN OF	A	C	CABARRUS	L	S02	WELL #3
NC0113025	HARRISBURG, TOWN OF	A	C	CABARRUS	L	S12	HEATHERSTONE #1
NC0113025	HARRISBURG, TOWN OF	A	C	CABARRUS	L	S13	HEATHERSTONE #2
NC0416010	BEAUFORT, TOWN OF	A	C	CARTERET	L	W02	WELL #2
NC0416010	BEAUFORT, TOWN OF	A	C	CARTERET	L	W03	WELL #3
NC0416010	BEAUFORT, TOWN OF	A	C	CARTERET	L	W04	WELL #4
NC0416010	BEAUFORT, TOWN OF	A	C	CARTERET	L	W05	WELL #5
NC0416015	MOREHEAD CITY, TOWN OF	A	C	CARTERET	L	W03	WELL #3
NC0416015	MOREHEAD CITY, TOWN OF	A	C	CARTERET	L	W04	WELL #4
NC0416015	MOREHEAD CITY, TOWN OF	A	C	CARTERET	L	W05	WELL #5
NC0416015	MOREHEAD CITY, TOWN OF	A	C	CARTERET	L	W06	WELL #6
NC0416020	NEWPORT WATER SYSTEM	A	C	CARTERET	L	W03	WELL #3

NC0416020	NEWPORT WATER SYSTEM	A	C	CARTERET	L	W04	WELL #4
NC0416020	NEWPORT WATER SYSTEM	A	C	CARTERET	L	W05	WELL # 5
NC0416035	ATLANTIC BEACH, TOWN OF	A	C	CARTERET	L	W01	WELL #1
NC0416035	ATLANTIC BEACH, TOWN OF	A	C	CARTERET	L	W02	WELL #2
NC0416035	ATLANTIC BEACH, TOWN OF	A	C	CARTERET	L	W03	WELL #3
NC0416035	ATLANTIC BEACH, TOWN OF	A	C	CARTERET	L	W04	WELL #4
NC0416035	ATLANTIC BEACH, TOWN OF	A	C	CARTERET	L	W05	WELL #5
NC0416035	ATLANTIC BEACH, TOWN OF	A	C	CARTERET	L	W06	WELL #6
NC0217015	MILTON, TOWN OF	A	C	CASWELL	L	006	WELL #6
NC0421010	EDENTON, TOWN OF	A	C	CHOWAN	L	W01	FREEMASON ST WELL
NC0421010	EDENTON, TOWN OF	A	C	CHOWAN	L	W02	VIRGINIA RD WELL
NC0421010	EDENTON, TOWN OF	A	C	CHOWAN	L	W03	BEAVER HILL WELL
NC0421010	EDENTON, TOWN OF	A	C	CHOWAN	L	W04	BOSWELL ST WELL
NC0123045	LAWNDALE, TOWN OF	A	C	CLEVELAND	L	S01	WELL #1
NC0123045	LAWNDALE, TOWN OF	A	C	CLEVELAND	L	S02	WELL #2
NC0424010	WHITEVILLE, CITY OF	A	C	COLUMBUS	L	W04	WELL #4
NC0424010	WHITEVILLE, CITY OF	A	C	COLUMBUS	L	W05	WELL #5
NC0424010	WHITEVILLE, CITY OF	A	C	COLUMBUS	L	W06	WELL #6
NC0424010	WHITEVILLE, CITY OF	A	C	COLUMBUS	L	W07	WELL #7
NC0424010	WHITEVILLE, CITY OF	A	C	COLUMBUS	L	W08	WELL #8
NC0424015	TABOR CITY, TOWN OF	A	C	COLUMBUS	L	100	WELL #1
NC0424015	TABOR CITY, TOWN OF	A	C	COLUMBUS	L	200	WELL #2
NC0424015	TABOR CITY, TOWN OF	A	C	COLUMBUS	L	400	WELL #4

NC0424015	TABOR CITY, TOWN OF	A	C	COLUMBUS	L	500	WELL #5
NC0424020	CHADBOURN, TOWN OF	A	C	COLUMBUS	L	W02	WELL #2
NC0424020	CHADBOURN, TOWN OF	A	C	COLUMBUS	L	W04	WELL #4
NC0424030	FAIR BLUFF, TOWN OF	A	C	COLUMBUS	L	W03	WELL #3
NC0424040	BRUNSWICK, TOWN OF	A	C	COLUMBUS	L	W01	WELL #1
NC0424040	BRUNSWICK, TOWN OF	A	C	COLUMBUS	L	W02	WELL #2
NC0424045	LAKE WACCAMAW, TOWN OF	A	C	COLUMBUS	L	W01	WELL #1
NC0424045	LAKE WACCAMAW, TOWN OF	A	C	COLUMBUS	L	W02	WELL #2
NC0424050	BOLTON, TOWN OF	A	C	COLUMBUS	L	W01	WELL #1
NC0424050	BOLTON, TOWN OF	A	C	COLUMBUS	L	W02	WELL #2
NC0424055	CERRO GORDO, TOWN OF	A	C	COLUMBUS	L	W01	WELL #1
NC0424055	CERRO GORDO, TOWN OF	A	C	COLUMBUS	L	W02	WELL #2
NC0425010	NEW BERN, CITY OF	A	C	CRAVEN	L	W01	WELL #1
NC0425010	NEW BERN, CITY OF	A	C	CRAVEN	L	W02	WELL #2
NC0425010	NEW BERN, CITY OF	A	C	CRAVEN	L	W03	WELL #3
NC0425010	NEW BERN, CITY OF	A	C	CRAVEN	L	W04	WELL #4
NC0425010	NEW BERN, CITY OF	A	C	CRAVEN	L	W05	WELL #5
NC0425010	NEW BERN, CITY OF	A	C	CRAVEN	L	W10	WELL #10 GROUP B
NC0425010	NEW BERN, CITY OF	A	C	CRAVEN	L	W11	WELL #11 GROUP B
NC0425010	NEW BERN, CITY OF	A	C	CRAVEN	L	W12	WELL #12 GROUP A
NC0425010	NEW BERN, CITY OF	A	C	CRAVEN	L	W13	WELL #13 GROUP B
NC0425010	NEW BERN, CITY OF	A	C	CRAVEN	L	W14	WELL #14 GROUP A
NC0425010	NEW BERN, CITY OF	A	C	CRAVEN	L	W15	WELL #15 GROUP B

NC0425010	NEW BERN, CITY OF	A	C	CRAVEN	L	W1A	WELL #1 GROUP A
NC0425010	NEW BERN, CITY OF	A	C	CRAVEN	L	W2A	WELL #2 GROUP A
NC0425010	NEW BERN, CITY OF	A	C	CRAVEN	L	W3B	WELL #3 GROUP B
NC0425010	NEW BERN, CITY OF	A	C	CRAVEN	L	W4A	WELL #4 GROUP A
NC0425010	NEW BERN, CITY OF	A	C	CRAVEN	L	W5B	WELL #5 GROUP B
NC0425010	NEW BERN, CITY OF	A	C	CRAVEN	L	W6A	WELL #6 GROUP A
NC0425010	NEW BERN, CITY OF	A	C	CRAVEN	L	W7B	WELL #7 GROUP B
NC0425010	NEW BERN, CITY OF	A	C	CRAVEN	L	W8A	WELL #8 GROUP A
NC0425010	NEW BERN, CITY OF	A	C	CRAVEN	L	W9B	WELL #9 GROUP B
NC0425015	HAVELOCK WATER SYSTEM	A	C	CRAVEN	L	W03	WELL #3 BROWN BLVD
NC0425015	HAVELOCK WATER SYSTEM	A	C	CRAVEN	L	W04	WELL #4
NC0425015	HAVELOCK WATER SYSTEM	A	C	CRAVEN	L	W05	WELL #5
NC0425015	HAVELOCK WATER SYSTEM	A	C	CRAVEN	L	W6A	WELL #6A
NC0425020	VANCEBORO WATER SYSTEM	A	C	CRAVEN	L	W01	WELL #1
NC0425020	VANCEBORO WATER SYSTEM	A	C	CRAVEN	L	W02	WELL #2
NC0425025	DOVER, TOWN OF	A	C	CRAVEN	L	W01	WELL #1
NC0425025	DOVER, TOWN OF	A	C	CRAVEN	L	W02	WELL #2
NC0425113	TOWN OF RIVER BEND	A	C	CRAVEN	L	W01	WELL #1
NC0425113	TOWN OF RIVER BEND	A	C	CRAVEN	L	W02	WELL #2
NC0425113	TOWN OF RIVER BEND	A	C	CRAVEN	L	W03	WELL #3
NC0326040	WADE, TOWN OF	A	C	CUMBERLAND	L	W02	WELL #2A
NC0326040	WADE, TOWN OF	A	C	CUMBERLAND	L	W03	WELL #3
NC0326040	WADE, TOWN OF	A	C	CUMBERLAND	L	W04	WELL #4

NC0326040	WADE, TOWN OF	A	C	CUMBERLAND	L	W05	WELL #5
NC0326040	WADE, TOWN OF	A	C	CUMBERLAND	L	W06	WELL# 6
NC0326040	WADE, TOWN OF	A	C	CUMBERLAND	L	W07	WELL# 7
NC0326040	WADE, TOWN OF	A	C	CUMBERLAND	L	W08	WELL# 8
NC0431010	WALLACE, TOWN OF	A	C	DUPLIN	L	W01	WELL #1
NC0431010	WALLACE, TOWN OF	A	C	DUPLIN	L	W02	WELL #2
NC0431010	WALLACE, TOWN OF	A	C	DUPLIN	L	W04	WELL #4
NC0431010	WALLACE, TOWN OF	A	C	DUPLIN	L	W05	WELL #5
NC0431010	WALLACE, TOWN OF	A	C	DUPLIN	L	W06	WELL #6
NC0431010	WALLACE, TOWN OF	A	C	DUPLIN	L	W08	WELL #8
NC0431010	WALLACE, TOWN OF	A	C	DUPLIN	L	W09	WELL #9
NC0431010	WALLACE, TOWN OF	A	C	DUPLIN	L	W11	WELL #11
NC0431010	WALLACE, TOWN OF	A	C	DUPLIN	L	W14	WELL #14
NC0431015	WARSAW, TOWN OF	A	C	DUPLIN	L	400	WELL #4
NC0431015	WARSAW, TOWN OF	A	C	DUPLIN	L	500	WELL #5
NC0431015	WARSAW, TOWN OF	A	C	DUPLIN	L	600	WELL #6
NC0431020	BEULAVILLE, TOWN OF	A	C	DUPLIN	L	300	WELL #3
NC0431020	BEULAVILLE, TOWN OF	A	C	DUPLIN	L	400	WELL #4
NC0431025	ROSE HILL, TOWN OF	A	C	DUPLIN	L	300	WELL #3
NC0431025	ROSE HILL, TOWN OF	A	C	DUPLIN	L	400	WELL #4
NC0431025	ROSE HILL, TOWN OF	A	C	DUPLIN	L	500	WELL #5
NC0431030	KENANSVILLE, TOWN OF	A	C	DUPLIN	L	100	WELL #1
NC0431030	KENANSVILLE, TOWN OF	A	C	DUPLIN	L	200	WELL #2

NC0431035	MAGNOLIA, TOWN OF	A	C	DUPLIN	L	RW1	WELL #1
NC0431035	MAGNOLIA, TOWN OF	A	C	DUPLIN	L	RW2	WELL #2
NC0431040	FAISON, TOWN OF	A	C	DUPLIN	L	W04	WELL #4
NC0431040	FAISON, TOWN OF	A	C	DUPLIN	L	W05	WELL #5
NC0431040	FAISON, TOWN OF	A	C	DUPLIN	L	W05	WELL #5
NC0431040	FAISON, TOWN OF	A	C	DUPLIN	L	W2A	WELL #2A
NC0431045	CALYPSO, TOWN OF	A	C	DUPLIN	L	W02	WELL #2
NC0431045	CALYPSO, TOWN OF	A	C	DUPLIN	L	W03	WELL #3
NC0431060	GREENEVERS, TOWN OF	A	C	DUPLIN	L	100	WELL #1
NC0431060	GREENEVERS, TOWN OF	A	C	DUPLIN	L	200	WELL #2
NC0433015	PINETOPS, TOWN OF	A	C	EDGECOMBE	L	W04	WELL #4
NC0433015	PINETOPS, TOWN OF	A	C	EDGECOMBE	L	W05	WELL #5
NC0433015	PINETOPS, TOWN OF	A	C	EDGECOMBE	L	W06	WELL #6
NC0433015	PINETOPS, TOWN OF	A	C	EDGECOMBE	L	W07	WELL #7
NC0433020	MACCLESFIELD, TOWN OF	A	C	EDGECOMBE	L	W01	WELL #1
NC0433020	MACCLESFIELD, TOWN OF	A	C	EDGECOMBE	L	W02	WELL #2
NC0138010	ROBBINSVILLE, TOWN OF	A	C	GRAHAM	L	W02	WELL NO 2
NC0138010	ROBBINSVILLE, TOWN OF	A	C	GRAHAM	L	W03	WELL NO 3
NC0138105	LAKE SANTEETLAH, TOWN OF	A	C	GRAHAM	L	W01	WELL #1
NC0138105	LAKE SANTEETLAH, TOWN OF	A	C	GRAHAM	L	W02	WELL #2
NC0138105	LAKE SANTEETLAH, TOWN OF	A	C	GRAHAM	L	W03	WELL #3
NC0138105	LAKE SANTEETLAH, TOWN OF	A	C	GRAHAM	L	W04	WELL #4
NC0440010	SNOW HILL, TOWN OF	A	C	GREENE	L	001	INDUS PARK WELL #1

NC0440010	SNOW HILL, TOWN OF	A	C	GREENE	L	002	KINGOLD WELL #2
NC0440010	SNOW HILL, TOWN OF	A	C	GREENE	L	004	BEAMON WELL #4
NC0440010	SNOW HILL, TOWN OF	A	C	GREENE	L	005	TYSON WELL #5
NC0440010	SNOW HILL, TOWN OF	A	C	GREENE	L	W4A	WELL #4A
NC0440020	HOOKERTON, TOWN OF	A	C	GREENE	L	W02	WATER TANK WELL-WELL #2
NC0442035	HOBGOOD, TOWN OF	A	C	HALIFAX	L	W01	WELL #1
NC0442035	HOBGOOD, TOWN OF	A	C	HALIFAX	L	W02	WELL #2
NC0442035	HOBGOOD, TOWN OF	A	C	HALIFAX	L	W03	WELL #3
NC0442035	HOBGOOD, TOWN OF	A	C	HALIFAX	L	W04	WELL #4
NC0446010	AHOSKIE, TOWN OF	A	C	HERTFORD	L	03A	WELL #3A
NC0446010	AHOSKIE, TOWN OF	A	C	HERTFORD	L	101	WELL #1
NC0446010	AHOSKIE, TOWN OF	A	C	HERTFORD	L	103	WELL #3
NC0446010	AHOSKIE, TOWN OF	A	C	HERTFORD	L	104	WELL #4
NC0446010	AHOSKIE, TOWN OF	A	C	HERTFORD	L	W4A	WELL # 4A
NC0446010	AHOSKIE, TOWN OF	A	C	HERTFORD	L	W5A	WELL #5A
NC0446010	AHOSKIE, TOWN OF	A	C	HERTFORD	L	W5B	WELL#5B
NC0446015	MURFREESBORO, TOWN OF	A	C	HERTFORD	L	001	WELL #1
NC0446015	MURFREESBORO, TOWN OF	A	C	HERTFORD	L	002	WELL #2
NC0446015	MURFREESBORO, TOWN OF	A	C	HERTFORD	L	003	WELL #3
NC0446020	WINTON, TOWN OF	A	C	HERTFORD	L	001	WELL #1
NC0446020	WINTON, TOWN OF	A	C	HERTFORD	L	002	WELL #2
NC0446020	WINTON, TOWN OF	A	C	HERTFORD	L	003	WELL #3
NC0446030	VILLAGE OF COFIELD	A	C	HERTFORD	L	W03	WELL #3

NC0446030	VILLAGE OF COFIELD	A	C	HERTFORD	L	W04	WELL #4
NC0446040	HARRELLSVILLE, TOWN OF	A	C	HERTFORD	L	W03	WELL #3
NC0347010	RAEFORD, CITY OF	A	C	HOKE	L	W01	WELL #1
NC0347010	RAEFORD, CITY OF	A	C	HOKE	L	W02	WELL #2
NC0347010	RAEFORD, CITY OF	A	C	HOKE	L	W05	WELL #5
NC0347010	RAEFORD, CITY OF	A	C	HOKE	L	W07	WELL #7
NC0347010	RAEFORD, CITY OF	A	C	HOKE	L	W08	WELL #8
NC0347010	RAEFORD, CITY OF	A	C	HOKE	L	W09	WELL #9
NC0347010	RAEFORD, CITY OF	A	C	HOKE	L	W12	WELL #12
NC0347010	RAEFORD, CITY OF	A	C	HOKE	L	W13	WELL #13
NC0347010	RAEFORD, CITY OF	A	C	HOKE	L	W14	WELL #14
NC0347010	RAEFORD, CITY OF	A	C	HOKE	L	W15	WELL #15
NC0347010	RAEFORD, CITY OF	A	C	HOKE	L	W16	WELL #16
NC0347010	RAEFORD, CITY OF	A	C	HOKE	L	W17	WELL #17
NC0347010	RAEFORD, CITY OF	A	C	HOKE	L	W19	WELL #19
NC0347010	RAEFORD, CITY OF	A	C	HOKE	L	W20	WELL #20
NC0347010	RAEFORD, CITY OF	A	C	HOKE	L	W21	WELL #21
NC0347010	RAEFORD, CITY OF	A	C	HOKE	L	W22	WELL #22
NC0347010	RAEFORD, CITY OF	A	C	HOKE	L	W23	WELL #23
NC0347010	RAEFORD, CITY OF	A	C	HOKE	L	W24	WELL #24
NC0347010	RAEFORD, CITY OF	A	C	HOKE	L	W25	WELL #25
NC0347010	RAEFORD, CITY OF	A	C	HOKE	L	W26	WELL #26
NC0351015	SELMA, TOWN OF	A	C	JOHNSTON	L	W01	WELL #1

NC0351015	SELMA, TOWN OF	A	C	JOHNSTON	L	W03	WELL #3
NC0351015	SELMA, TOWN OF	A	C	JOHNSTON	L	W04	WELL #4
NC0351015	SELMA, TOWN OF	A	C	JOHNSTON	L	W05	WELL #5
NC0351015	SELMA, TOWN OF	A	C	JOHNSTON	L	W06	WELL #6
NC0351015	SELMA, TOWN OF	A	C	JOHNSTON	L	W07	WELL #7
NC0351015	SELMA, TOWN OF	A	C	JOHNSTON	L	W08	WELL #8
NC0351015	SELMA, TOWN OF	A	C	JOHNSTON	L	W10	WELL #10
NC0351015	SELMA, TOWN OF	A	C	JOHNSTON	L	W9A	WELL #9
NC0351040	PINE LEVEL, TOWN OF	A	C	JOHNSTON	L	S01	WELL #1
NC0351045	MICRO, TOWN OF	A	C	JOHNSTON	L	W01	WELL #1
NC0351045	MICRO, TOWN OF	A	C	JOHNSTON	L	W03	WELL #3
NC0452010	MAYSVILLE, TOWN OF	A	C	JONES	L	W01	WELL #1
NC0452015	POLLOCKSVILLE, TOWN OF	A	C	JONES	L	W01	WELL #1
NC0452015	POLLOCKSVILLE, TOWN OF	A	C	JONES	L	W03	WELL #3B
NC0454010	KINSTON, CITY OF	A	C	LENOIR	L	W01	MANNING ST/WELL #1 (LSP)
NC0454010	KINSTON, CITY OF	A	C	LENOIR	L	W03	MANNING ST/WELL #3 (LSP)
NC0454010	KINSTON, CITY OF	A	C	LENOIR	L	W04	EAST ST/WELL #4
NC0454010	KINSTON, CITY OF	A	C	LENOIR	L	W05	OLD WELL RD/WELL #5
NC0454010	KINSTON, CITY OF	A	C	LENOIR	L	W06	ALEXANDER ST/WELL #6
NC0454010	KINSTON, CITY OF	A	C	LENOIR	L	W07	MARKET ST/WELL #7
NC0454010	KINSTON, CITY OF	A	C	LENOIR	L	W08	NEUSE RD/WELL #8
NC0454010	KINSTON, CITY OF	A	C	LENOIR	L	W09	CUNNINGHAM RD/WELL #9
NC0454010	KINSTON, CITY OF	A	C	LENOIR	L	W11	DARDEN DR/WELL #11

NC0454010	KINSTON, CITY OF	A	C	LENOIR	L	W12	GRAY TILGHMAN RD/WELL #12
NC0454010	KINSTON, CITY OF	A	C	LENOIR	L	W13	SR 1546/WELL #13
NC0454010	KINSTON, CITY OF	A	C	LENOIR	L	W16	EASTWOOD/WELL #16
NC0454010	KINSTON, CITY OF	A	C	LENOIR	L	W18	KELLY RD/WELL #18
NC0454010	KINSTON, CITY OF	A	C	LENOIR	L	W20	HICKORY HILLS/WELL #20
NC0454010	KINSTON, CITY OF	A	C	LENOIR	L	W21	TOWER HILL/WELL #21
NC0454015	LA GRANGE WATER SYSTEM	A	C	LENOIR	L	W02	WELL #2
NC0454015	LA GRANGE WATER SYSTEM	A	C	LENOIR	L	W04	WELL #4
NC0454015	LA GRANGE WATER SYSTEM	A	C	LENOIR	L	W05	WELL #5
NC0454015	LA GRANGE WATER SYSTEM	A	C	LENOIR	L	W06	WELL #6
NC0454020	PINK HILL, TOWN OF	A	C	LENOIR	L	W01	WELL #1
NC0158015	MARSHALL, TOWN OF	A	C	MADISON	L	006	WELL #6
NC0158015	MARSHALL, TOWN OF	A	C	MADISON	L	008	WELL #8
NC0158015	MARSHALL, TOWN OF	A	C	MADISON	L	010	WELL #10
NC0158015	MARSHALL, TOWN OF	A	C	MADISON	L	012	WELL #12
NC0158015	MARSHALL, TOWN OF	A	C	MADISON	L	014	WELL # 14
NC0158020	HOT SPRINGS, TOWN OF	A	C	MADISON	L	W01	WELL #1
NC0158020	HOT SPRINGS, TOWN OF	A	C	MADISON	L	W02	WELL #2
NC0459010	WILLIAMSTON, TOWN OF	A	C	MARTIN	L	W02	CAROLINA AVE WELL #2
NC0459010	WILLIAMSTON, TOWN OF	A	C	MARTIN	L	W03	WILLOW DR WELL #3
NC0459010	WILLIAMSTON, TOWN OF	A	C	MARTIN	L	W04	FACTORY ST WELL #4
NC0459010	WILLIAMSTON, TOWN OF	A	C	MARTIN	L	W08	NORTHSIDE WELL# 8
NC0459015	ROBERSONVILLE, TOWN OF	A	C	MARTIN	L	W04	PERDUE WELL #4

NC0459015	ROBERSONVILLE, TOWN OF	A	C	MARTIN	L	W06	PURVIS WELL #6
NC0459015	ROBERSONVILLE, TOWN OF	A	C	MARTIN	L	W07	HWY 64
NC0459025	HAMILTON, TOWN OF	A	C	MARTIN	L	W01	WELL #1
NC0459025	HAMILTON, TOWN OF	A	C	MARTIN	L	W02	WELL #2
NC0459030	JAMESVILLE, TOWN OF	A	C	MARTIN	L	W01	WELL #1
NC0459030	JAMESVILLE, TOWN OF	A	C	MARTIN	L	W02	WELL #2
NC0156025	OLD FORT, TOWN OF	A	C	MCDOWELL	L	S02	WELL #2
NC0156025	OLD FORT, TOWN OF	A	C	MCDOWELL	L	S05	WELL #5
NC0156025	OLD FORT, TOWN OF	A	C	MCDOWELL	L	S09	WELL #9
NC0156025	OLD FORT, TOWN OF	A	C	MCDOWELL	L	S10	WELL #10
NC0161010	SPRUCE PINE, TOWN OF	A	C	MITCHELL	L	003	CARTER RIDGE WELL#1
NC0161010	SPRUCE PINE, TOWN OF	A	C	MITCHELL	L	004	WELL #2
NC0161015	BAKERSVILLE, TOWN OF	A	C	MITCHELL	L	W01	RESERVOIR WELL
NC0161015	BAKERSVILLE, TOWN OF	A	C	MITCHELL	L	W04	WELL #4 LINDA LANE WELL
NC0363010	SOUTHERN PINES, TOWN OF	A	C	MOORE	L	W01	WELL #1 WEYMOUTH CTR
NC0363010	SOUTHERN PINES, TOWN OF	A	C	MOORE	L	W01	WELL #1 WEYMOUTH CTR
NC0363010	SOUTHERN PINES, TOWN OF	A	C	MOORE	L	W02	WELL#2 HENLY STREET
NC0363010	SOUTHERN PINES, TOWN OF	A	C	MOORE	L	W02	WELL#2 HENLY STREET
NC0363010	SOUTHERN PINES, TOWN OF	A	C	MOORE	L	W04	WELL#4
NC0363010	SOUTHERN PINES, TOWN OF	A	C	MOORE	L	W04	WELL#4
NC0363010	SOUTHERN PINES, TOWN OF	A	C	MOORE	L	W05	WELL#5
NC0363020	ABERDEEN, TOWN OF	A	C	MOORE	L	W03	WELL #3
NC0363020	ABERDEEN, TOWN OF	A	C	MOORE	L	W06	WELL #6

NC0363020	ABERDEEN, TOWN OF	A	C	MOORE	L	W07	WELL #7
NC0363020	ABERDEEN, TOWN OF	A	C	MOORE	L	W08	WELL #8
NC0363020	ABERDEEN, TOWN OF	A	C	MOORE	L	W10	WELL #10
NC0363020	ABERDEEN, TOWN OF	A	C	MOORE	L	W11	WELL #11
NC0363020	ABERDEEN, TOWN OF	A	C	MOORE	L	W12	WELL #12
NC0363020	ABERDEEN, TOWN OF	A	C	MOORE	L	W13	WELL #13
NC0363020	ABERDEEN, TOWN OF	A	C	MOORE	L	W14	WELL #14
NC0363020	ABERDEEN, TOWN OF	A	C	MOORE	L	W15	WELL #15
NC0363020	ABERDEEN, TOWN OF	A	C	MOORE	L	W16	WELL #16
NC0363020	ABERDEEN, TOWN OF	A	C	MOORE	L	W17	WELL #17
NC0363020	ABERDEEN, TOWN OF	A	C	MOORE	L	W18	WELL #18
NC0363020	ABERDEEN, TOWN OF	A	C	MOORE	L	W19	WELL #19
NC0363020	ABERDEEN, TOWN OF	A	C	MOORE	L	W20	WELL #20
NC0363020	ABERDEEN, TOWN OF	A	C	MOORE	L	W21	WELL #21
NC0363020	ABERDEEN, TOWN OF	A	C	MOORE	L	W22	WELL #22
NC0363020	ABERDEEN, TOWN OF	A	C	MOORE	L	W26	WELL #26
NC0363020	ABERDEEN, TOWN OF	A	C	MOORE	L	W27	WELL #27
NC0363030	PINEBLUFF, TOWN OF	A	C	MOORE	L	S05	WELL #5
NC0363030	PINEBLUFF, TOWN OF	A	C	MOORE	L	W01	WELL #1
NC0363030	PINEBLUFF, TOWN OF	A	C	MOORE	L	W02	WELL #2
NC0363030	PINEBLUFF, TOWN OF	A	C	MOORE	L	W03	WELL #3
NC0363030	PINEBLUFF, TOWN OF	A	C	MOORE	L	W04	WELL #4
NC0363035	TAYLORTOWN, TOWN OF	A	C	MOORE	L	W01	WELL #1

NC0363035	TAYLORTOWN, TOWN OF	A	C	MOORE	L	W03	WELL #3
NC0363035	TAYLORTOWN, TOWN OF	A	C	MOORE	L	W04	WELL #4
NC0363035	TAYLORTOWN, TOWN OF	A	C	MOORE	L	W05	WELL #5
NC0363035	TAYLORTOWN, TOWN OF	A	C	MOORE	L	W06	WELL #6
NC0363040	CAMERON, TOWN OF	A	C	MOORE	L	W07	WELL #7
NC0363040	CAMERON, TOWN OF	A	C	MOORE	L	W08	WELL #8
NC0363479	FOXFIRE VILLAGE, TOWN OF	A	C	MOORE	L	W04	WELL #4
NC0363479	FOXFIRE VILLAGE, TOWN OF	A	C	MOORE	L	W05	WELL #5
NC0363479	FOXFIRE VILLAGE, TOWN OF	A	C	MOORE	L	W07	WELL #7
NC0363479	FOXFIRE VILLAGE, TOWN OF	A	C	MOORE	L	W08	WELL #8
NC0363479	FOXFIRE VILLAGE, TOWN OF	A	C	MOORE	L	W10	WELL #10
NC0363479	FOXFIRE VILLAGE, TOWN OF	A	C	MOORE	L	W11	WELL #11
NC0464020	NASHVILLE, TOWN OF	A	C	NASH	L	W02	WELL #2
NC0464020	NASHVILLE, TOWN OF	A	C	NASH	L	W04	WELL #4
NC0464020	NASHVILLE, TOWN OF	A	C	NASH	L	W05	WELL #5
NC0464020	NASHVILLE, TOWN OF	A	C	NASH	L	W06	WELL #6
NC0464020	NASHVILLE, TOWN OF	A	C	NASH	L	W07	WELL #7
NC0464025	SPRING HOPE, TOWN OF	A	C	NASH	L	001	WELL #1 ASH ST
NC0464025	SPRING HOPE, TOWN OF	A	C	NASH	L	004	WELL #4 ELEM SCH
NC0464025	SPRING HOPE, TOWN OF	A	C	NASH	L	006	WELL #6 OLD SPRING HOPE RD
NC0464025	SPRING HOPE, TOWN OF	A	C	NASH	L	W02	WELL #2 MONTGOMERY ST
NC0464035	BAILEY, TOWN OF	A	C	NASH	L	S01	WELL #1
NC0464035	BAILEY, TOWN OF	A	C	NASH	L	S02	WELL #2

NC0464050	MIDDLESEX WATER SYSTEM	A	C	NASH	L	W01	WELL #1
NC0464050	MIDDLESEX WATER SYSTEM	A	C	NASH	L	W02	WELL #2
NC0464050	MIDDLESEX WATER SYSTEM	A	C	NASH	L	W04	WELL #4
NC0464050	MIDDLESEX WATER SYSTEM	A	C	NASH	L	W05	WELL #5
NC0465015	CAROLINA BEACH WATER SYSTEM	A	C	NEW HANOVER	L	W01	WELL #1
NC0465015	CAROLINA BEACH WATER SYSTEM	A	C	NEW HANOVER	L	W02	WELL #2
NC0465015	CAROLINA BEACH WATER SYSTEM	A	C	NEW HANOVER	L	W03	WELL #3
NC0465015	CAROLINA BEACH WATER SYSTEM	A	C	NEW HANOVER	L	W05	WELL #5
NC0465015	CAROLINA BEACH WATER SYSTEM	A	C	NEW HANOVER	L	W06	WELL #6
NC0465015	CAROLINA BEACH WATER SYSTEM	A	C	NEW HANOVER	L	W07	WELL #7
NC0465015	CAROLINA BEACH WATER SYSTEM	A	C	NEW HANOVER	L	W08	WELL #8
NC0465015	CAROLINA BEACH WATER SYSTEM	A	C	NEW HANOVER	L	W09	WELL #9
NC0465015	CAROLINA BEACH WATER SYSTEM	A	C	NEW HANOVER	L	W10	WELL #10
NC0465015	CAROLINA BEACH WATER SYSTEM	A	C	NEW HANOVER	L	W11	WELL #11
NC0465015	CAROLINA BEACH WATER SYSTEM	A	C	NEW HANOVER	L	W12	WELL #12
NC0465015	CAROLINA BEACH WATER SYSTEM	A	C	NEW HANOVER	L	W13	WELL #13
NC0465015	CAROLINA BEACH WATER SYSTEM	A	C	NEW HANOVER	L	W14	WELL #14
NC0465020	WRIGHTSVILLE BEACH WATER SYST	A	C	NEW HANOVER	L	R01	WELL #1
NC0465020	WRIGHTSVILLE BEACH WATER SYST	A	C	NEW HANOVER	L	R02	WELL #2
NC0465020	WRIGHTSVILLE BEACH WATER SYST	A	C	NEW HANOVER	L	R03	WELL #3
NC0465020	WRIGHTSVILLE BEACH WATER SYST	A	C	NEW HANOVER	L	R04	WELL #4
NC0465020	WRIGHTSVILLE BEACH WATER SYST	A	C	NEW HANOVER	L	R05	WELL #5
NC0465020	WRIGHTSVILLE BEACH WATER SYST	A	C	NEW HANOVER	L	R06	WELL #6

NC0465020	WRIGHTSVILLE BEACH WATER SYST	A	C	NEW HANOVER	L	R07	WELL #7
NC0465020	WRIGHTSVILLE BEACH WATER SYST	A	C	NEW HANOVER	L	R08	WELL #8
NC0465020	WRIGHTSVILLE BEACH WATER SYST	A	C	NEW HANOVER	L	R11	WELL #11
NC0465025	KURE BEACH WATER SYSTEM	A	C	NEW HANOVER	L	W01	WELL #1
NC0465025	KURE BEACH WATER SYSTEM	A	C	NEW HANOVER	L	W02	WELL #2
NC0465025	KURE BEACH WATER SYSTEM	A	C	NEW HANOVER	L	W03	WELL #3/I AVE WELL
NC0465025	KURE BEACH WATER SYSTEM	A	C	NEW HANOVER	L	W04	WELL #4
NC0465025	KURE BEACH WATER SYSTEM	A	C	NEW HANOVER	L	W05	WELL #5
NC0466010	JACKSON, TOWN OF	A	C	NORTHAMPTON	L	W02	WELL #2
NC0466015	SEVERN, TOWN OF	A	C	NORTHAMPTON	L	W02	WELL #2
NC0466020	RICH SQUARE, TOWN OF	A	C	NORTHAMPTON	L	S01	WELL #1
NC0466020	RICH SQUARE, TOWN OF	A	C	NORTHAMPTON	L	S02	WELL #2
NC0466025	CONWAY, TOWN OF	A	C	NORTHAMPTON	L	W07	WELL #7
NC0466025	CONWAY, TOWN OF	A	C	NORTHAMPTON	L	W08	WELL #8
NC0466025	CONWAY, TOWN OF	A	C	NORTHAMPTON	L	W5A	WELL #5A
NC0466035	SEABOARD, TOWN OF	A	C	NORTHAMPTON	L	S01	WELL #1
NC0466040	WOODLAND, TOWN OF	A	C	NORTHAMPTON	L	W01	WELL #1
NC0466040	WOODLAND, TOWN OF	A	C	NORTHAMPTON	L	W02	WELL #2
NC0467010	JACKSONVILLE CITY OF	A	C	ONSLOW	L	1CC	CHANEY'S CREEK #1
NC0467010	JACKSONVILLE CITY OF	A	C	ONSLOW	L	1CN	COMMONS NORTH #1
NC0467010	JACKSONVILLE CITY OF	A	C	ONSLOW	L	1CS	COMMONS SOUTH #1
NC0467010	JACKSONVILLE CITY OF	A	C	ONSLOW	L	2CC	CHANEY'S CREEK# 2
NC0467010	JACKSONVILLE CITY OF	A	C	ONSLOW	L	2CN	COMMONS NORTH #2

NC0467010	JACKSONVILLE CITY OF	A	C	ONSLow	L	2CS	COMMONS SOUTH # 2
NC0467010	JACKSONVILLE CITY OF	A	C	ONSLow	L	BF1	BELL FORK #1
NC0467010	JACKSONVILLE CITY OF	A	C	ONSLow	L	BP1	BUSINESS PARK #1
NC0467010	JACKSONVILLE CITY OF	A	C	ONSLow	L	BP2	BUSINESS PARK #2
NC0467010	JACKSONVILLE CITY OF	A	C	ONSLow	L	DF1	DEERFIELD (DF-1)
NC0467010	JACKSONVILLE CITY OF	A	C	ONSLow	L	DK1	DRUMMER KELLUM #1
NC0467010	JACKSONVILLE CITY OF	A	C	ONSLow	L	DK2	DRUMMER KELLUM #2
NC0467010	JACKSONVILLE CITY OF	A	C	ONSLow	L	FV1	FOXHORN VILLAGE #1
NC0467010	JACKSONVILLE CITY OF	A	C	ONSLow	L	MM1	MIRACLE MEADOWS 1
NC0467010	JACKSONVILLE CITY OF	A	C	ONSLow	L	MM2	MIRACLE MEADOWS 2
NC0467010	JACKSONVILLE CITY OF	A	C	ONSLow	L	PG1	PINEY GREEN 1
NC0467010	JACKSONVILLE CITY OF	A	C	ONSLow	L	PS2	PARKWOOD SOCCER #2
NC0467010	JACKSONVILLE CITY OF	A	C	ONSLow	L	RR1	RAMSEY ROAD #1
NC0467010	JACKSONVILLE CITY OF	A	C	ONSLow	L	W06	WELL #6
NC0467010	JACKSONVILLE CITY OF	A	C	ONSLow	L	W07	WELL #7
NC0467010	JACKSONVILLE CITY OF	A	C	ONSLow	L	W11	WELL #11
NC0467010	JACKSONVILLE CITY OF	A	C	ONSLow	L	W12	WELL #12
NC0467010	JACKSONVILLE CITY OF	A	C	ONSLow	L	W13	WELL #13
NC0467010	JACKSONVILLE CITY OF	A	C	ONSLow	L	W14	WELL #14
NC0467010	JACKSONVILLE CITY OF	A	C	ONSLow	L	W15	WELL #15
NC0467010	JACKSONVILLE CITY OF	A	C	ONSLow	L	W16	WELL #16
NC0467010	JACKSONVILLE CITY OF	A	C	ONSLow	L	W17	WELL #17
NC0467010	JACKSONVILLE CITY OF	A	C	ONSLow	L	W18	WELL #18

NC0467010	JACKSONVILLE CITY OF	A	C	ONslow	L	WP1	WILLIAMSBURG PLANTATION #1
NC0467010	JACKSONVILLE CITY OF	A	C	ONslow	L	WP2	WILLIAMSBURG PLANTATION #2
NC0469020	ORIENTAL WATER SYSTEM	A	C	PAMLICO	L	W02	WELL #2
NC0469020	ORIENTAL WATER SYSTEM	A	C	PAMLICO	L	W1A	WELL #1A
NC0470010	ELIZABETH CITY, CITY OF	A	C	PASQUOTANK	L	W01	WELL #1
NC0470010	ELIZABETH CITY, CITY OF	A	C	PASQUOTANK	L	W02	WELL #2
NC0470010	ELIZABETH CITY, CITY OF	A	C	PASQUOTANK	L	W03	WELL #3
NC0470010	ELIZABETH CITY, CITY OF	A	C	PASQUOTANK	L	W04	WELL #4
NC0470010	ELIZABETH CITY, CITY OF	A	C	PASQUOTANK	L	W07	WELL #7
NC0470010	ELIZABETH CITY, CITY OF	A	C	PASQUOTANK	L	W08	WELL #8
NC0470010	ELIZABETH CITY, CITY OF	A	C	PASQUOTANK	L	W09	WELL #9
NC0470010	ELIZABETH CITY, CITY OF	A	C	PASQUOTANK	L	W10	WELL #10
NC0470010	ELIZABETH CITY, CITY OF	A	C	PASQUOTANK	L	W11	WELL #11
NC0470010	ELIZABETH CITY, CITY OF	A	C	PASQUOTANK	L	W13	WELL #13
NC0470010	ELIZABETH CITY, CITY OF	A	C	PASQUOTANK	L	W14	WELL #14
NC0470010	ELIZABETH CITY, CITY OF	A	C	PASQUOTANK	L	W15	WELL #15
NC0470010	ELIZABETH CITY, CITY OF	A	C	PASQUOTANK	L	W16	WELL #16
NC0470010	ELIZABETH CITY, CITY OF	A	C	PASQUOTANK	L	W5A	WELL #5A
NC0471010	BURGAW, TOWN OF	A	C	PENDER	L	100	WRIGHT ST WELL
NC0471010	BURGAW, TOWN OF	A	C	PENDER	L	200	ASHE ST WELL
NC0471010	BURGAW, TOWN OF	A	C	PENDER	L	300	SO SMITH ST WELL
NC0471010	BURGAW, TOWN OF	A	C	PENDER	L	400	NORTH SMITH ST
NC0471015	SURF CITY, TOWN OF	A	C	PENDER	L	W03	WELL #3

NC0471015	SURF CITY, TOWN OF	A	C	PENDER	L	W05	WELL #5
NC0471020	TOPSAIL BEACH, TOWN OF	A	C	PENDER	L	005	WELL #5
NC0471020	TOPSAIL BEACH, TOWN OF	A	C	PENDER	L	W04	WELL #4
NC0471020	TOPSAIL BEACH, TOWN OF	A	C	PENDER	L	W1A	WELL #1A
NC0471020	TOPSAIL BEACH, TOWN OF	A	C	PENDER	L	W2A	WELL #2A
NC7071054	TOWN OF ATKINSON	A	C	PENDER	L	W01	SCHOOL WELL #1
NC7071054	TOWN OF ATKINSON	A	C	PENDER	L	W02	WOODS WELL #2
NC0472010	HERTFORD WATER SYSTEM	A	C	PERQUIMANS	L	W01	HERTFORD WELL #1
NC0472010	HERTFORD WATER SYSTEM	A	C	PERQUIMANS	L	W02	HERTFORD WELL #2
NC0472010	HERTFORD WATER SYSTEM	A	C	PERQUIMANS	L	W03	HERTFORD WELL #3
NC0474020	FARMVILLE, TOWN OF	A	C	PITT	L	W06	LINCOLN PARK WELL
NC0474020	FARMVILLE, TOWN OF	A	C	PITT	L	W09	CHINQUAPIN WELL
NC0474020	FARMVILLE, TOWN OF	A	C	PITT	L	W12	HWY 258 NORTH WELL
NC0474020	FARMVILLE, TOWN OF	A	C	PITT	L	W13	LANGS CROSSROADS WELL
NC0474020	FARMVILLE, TOWN OF	A	C	PITT	L	W14	GHOST HOLLOW WELL
NC0474020	FARMVILLE, TOWN OF	A	C	PITT	L	W15	MIDDLE SWAMP WELL
NC0474020	FARMVILLE, TOWN OF	A	C	PITT	L	W16	DALE WELL
NC0474020	FARMVILLE, TOWN OF	A	C	PITT	L	W17	STANTONSBURG WELL
NC0474025	AYDEN TOWN OF	A	C	PITT	L	WL1	WELL #1
NC0474025	AYDEN TOWN OF	A	C	PITT	L	WL3	WELL #3
NC0474025	AYDEN TOWN OF	A	C	PITT	L	WL4	WELL #4
NC0474030	BETHEL, TOWN OF	A	C	PITT	L	W02	WHITEHURST ST WELL
NC0474030	BETHEL, TOWN OF	A	C	PITT	L	W03	HWY 11 WELL

NC0474035	GRIFTON, TOWN OF	A	C	PITT	L	W03	WELL #3
NC0474040	WINTERVILLE, TOWN OF	A	C	PITT	L	W02	HUNSUCKER WELL
NC0474040	WINTERVILLE, TOWN OF	A	C	PITT	L	W03	RAGLAND WELL
NC0474040	WINTERVILLE, TOWN OF	A	C	PITT	L	W04	BALLPARK WELL
NC0474055	GRIMESLAND, TOWN OF	A	C	PITT	L	W01	WELL #1
NC0474055	GRIMESLAND, TOWN OF	A	C	PITT	L	W02	WELL #2
NC0175015	COLUMBUS TOWN OF	A	C	POLK	L	W01	WELL #1
NC0175015	COLUMBUS TOWN OF	A	C	POLK	L	W02	WELL #2
NC0175015	COLUMBUS TOWN OF	A	C	POLK	L	W03	WELL #3
NC0175015	COLUMBUS TOWN OF	A	C	POLK	L	W04	WELL #4
NC0276025	LIBERTY, TOWN OF	A	C	RANDOLPH	L	W01	WELL #1
NC0276025	LIBERTY, TOWN OF	A	C	RANDOLPH	L	W02	WELL #2
NC0276025	LIBERTY, TOWN OF	A	C	RANDOLPH	L	W04	WELL #4
NC0276025	LIBERTY, TOWN OF	A	C	RANDOLPH	L	W05	WELL #5
NC0276025	LIBERTY, TOWN OF	A	C	RANDOLPH	L	W06	WELL #6
NC0276025	LIBERTY, TOWN OF	A	C	RANDOLPH	L	W08	WELL #8
NC0276025	LIBERTY, TOWN OF	A	C	RANDOLPH	L	W10	WELL #10
NC0276025	LIBERTY, TOWN OF	A	C	RANDOLPH	L	W12	WELL #12
NC0276025	LIBERTY, TOWN OF	A	C	RANDOLPH	L	W12	WELL #12
NC0378010	LUMBERTON, CITY OF	A	C	ROBESON	L	S02	WELL #1
NC0378010	LUMBERTON, CITY OF	A	C	ROBESON	L	S03	WELL #2
NC0378010	LUMBERTON, CITY OF	A	C	ROBESON	L	S04	WELL #3
NC0378010	LUMBERTON, CITY OF	A	C	ROBESON	L	S05	WELL #4

NC0378010	LUMBERTON, CITY OF	A	C	ROBESON	L	S06	WELL #5
NC0378010	LUMBERTON, CITY OF	A	C	ROBESON	L	S07	WELL #6
NC0378010	LUMBERTON, CITY OF	A	C	ROBESON	L	S08	WELL #7
NC0378010	LUMBERTON, CITY OF	A	C	ROBESON	L	S09	WELL #8
NC0378015	RED SPRINGS, TOWN OF	A	C	ROBESON	L	W02	WELL #2
NC0378015	RED SPRINGS, TOWN OF	A	C	ROBESON	L	W1A	WELL 1A
NC0378015	RED SPRINGS, TOWN OF	A	C	ROBESON	L	W3A	WELL 3A
NC0378020	PEMBROKE, TOWN OF	A	C	ROBESON	L	W05	WELL #5
NC0378020	PEMBROKE, TOWN OF	A	C	ROBESON	L	W06	WELL #6
NC0378020	PEMBROKE, TOWN OF	A	C	ROBESON	L	W07	WELL #7
NC0378025	FAIRMONT, TOWN OF	A	C	ROBESON	L	W01	WELL #1
NC0378025	FAIRMONT, TOWN OF	A	C	ROBESON	L	W02	WELL #2
NC0378025	FAIRMONT, TOWN OF	A	C	ROBESON	L	W03	WELL #3
NC0378030	SAINT PAULS, TOWN OF	A	C	ROBESON	L	W02	WELL #2
NC0378030	SAINT PAULS, TOWN OF	A	C	ROBESON	L	W03	WELL #3
NC0378030	SAINT PAULS, TOWN OF	A	C	ROBESON	L	W04	WELL #4
NC0378035	MAXTON, TOWN OF	A	C	ROBESON	L	S02	WELL #2
NC0378035	MAXTON, TOWN OF	A	C	ROBESON	L	W01	WELL #1
NC0378040	ROWLAND, TOWN OF	A	C	ROBESON	L	W01	WELL #1
NC0378040	ROWLAND, TOWN OF	A	C	ROBESON	L	W2A	WELL #2A
NC0378045	PARKTON, TOWN OF	A	C	ROBESON	L	S04	WELL #4
NC0378045	PARKTON, TOWN OF	A	C	ROBESON	L	W01	WELL #1
NC0180050	CLEVELAND, TOWN OF	A	C	ROWAN	L	S01	WELL #1

NC0180050	CLEVELAND, TOWN OF	A	C	ROWAN	L	S02	WELL #2
NC0180050	CLEVELAND, TOWN OF	A	C	ROWAN	L	S03	WELL #3
NC0180055	FAITH, TOWN OF	A	C	ROWAN	L	S02	WELL #2
NC0180055	FAITH, TOWN OF	A	C	ROWAN	L	S03	WELL #3
NC0180055	FAITH, TOWN OF	A	C	ROWAN	L	S04	WELL #4
NC0180055	FAITH, TOWN OF	A	C	ROWAN	L	S05	WELL #5
NC0180055	FAITH, TOWN OF	A	C	ROWAN	L	S06	WELL #6
NC0181020	LAKE LURE, TOWN OF	A	C	RUTHERFORD	L	L11	WELL #L11 (VESS WELL)
NC0181020	LAKE LURE, TOWN OF	A	C	RUTHERFORD	L	L12	WELL #L12 (ISLAND CRK)
NC0181020	LAKE LURE, TOWN OF	A	C	RUTHERFORD	L	L13	WELL #L13 (ISLAND CRK)
NC0181020	LAKE LURE, TOWN OF	A	C	RUTHERFORD	L	L14	WELL #L14 (WOODY WELL)
NC0181020	LAKE LURE, TOWN OF	A	C	RUTHERFORD	L	L21	WELL #L21 (POWERS WELL)
NC0382010	CLINTON, CITY OF	A	C	SAMPSON	L	18S	WELL 18S (SHALLOW WELL)
NC0382010	CLINTON, CITY OF	A	C	SAMPSON	L	21D	WELL 21D (DEEP WELL)
NC0382010	CLINTON, CITY OF	A	C	SAMPSON	L	21S	WELL 21S (SHALLOW WELL)
NC0382010	CLINTON, CITY OF	A	C	SAMPSON	L	22S	WELL 22S (SHALLOW WELL)
NC0382010	CLINTON, CITY OF	A	C	SAMPSON	L	24S	WELL 24S (SHALLOW WELL)
NC0382010	CLINTON, CITY OF	A	C	SAMPSON	L	R12	WELL #12B
NC0382010	CLINTON, CITY OF	A	C	SAMPSON	L	R13	WELL #13
NC0382010	CLINTON, CITY OF	A	C	SAMPSON	L	R16	WELL #16
NC0382010	CLINTON, CITY OF	A	C	SAMPSON	L	R17	WELL #17
NC0382010	CLINTON, CITY OF	A	C	SAMPSON	L	R18	WELL #18 (DEEP WELL)
NC0382015	ROSEBORO, TOWN OF	A	C	SAMPSON	L	W01	WELL #1

NC0382015	ROSEBORO, TOWN OF	A	C	SAMPSON	L	W02	WELL #2
NC0382015	ROSEBORO, TOWN OF	A	C	SAMPSON	L	W03	WELL #3
NC0382020	GARLAND, TOWN OF	A	C	SAMPSON	L	W03	WELL #3
NC0382020	GARLAND, TOWN OF	A	C	SAMPSON	L	W04	WELL #4
NC0382025	SALEMBURG, TOWN OF	A	C	SAMPSON	L	W01	WELL #1
NC0382025	SALEMBURG, TOWN OF	A	C	SAMPSON	L	W02	WELL #2
NC0382025	SALEMBURG, TOWN OF	A	C	SAMPSON	L	W03	WELL #3
NC0382025	SALEMBURG, TOWN OF	A	C	SAMPSON	L	W04	WELL #4
NC0382035	NEWTON GROVE, TOWN OF	A	C	SAMPSON	L	W01	WELL #1
NC0382035	NEWTON GROVE, TOWN OF	A	C	SAMPSON	L	W02	WELL #2
NC0382040	TURKEY, TOWN OF	A	C	SAMPSON	L	W01	WELL #1
NC0382040	TURKEY, TOWN OF	A	C	SAMPSON	L	W02	WELL #2
NC0383010	LAURINBURG, CITY OF	A	C	SCOTLAND	L	S14	WELL #14
NC0383010	LAURINBURG, CITY OF	A	C	SCOTLAND	L	S15	WELL #15
NC0383010	LAURINBURG, CITY OF	A	C	SCOTLAND	L	S16	WELL #16
NC0383010	LAURINBURG, CITY OF	A	C	SCOTLAND	L	S17	WELL #17
NC0383010	LAURINBURG, CITY OF	A	C	SCOTLAND	L	S18	WELL #18
NC0383010	LAURINBURG, CITY OF	A	C	SCOTLAND	L	S19	WELL #19
NC0383010	LAURINBURG, CITY OF	A	C	SCOTLAND	L	W02	WELL #2
NC0383010	LAURINBURG, CITY OF	A	C	SCOTLAND	L	W05	WELL #5
NC0383010	LAURINBURG, CITY OF	A	C	SCOTLAND	L	W06	WELL #6
NC0383010	LAURINBURG, CITY OF	A	C	SCOTLAND	L	W08	WELL #8
NC0383010	LAURINBURG, CITY OF	A	C	SCOTLAND	L	W09	WELL #9

NC0383010	LAURINBURG, CITY OF	A	C	SCOTLAND	L	W10	WELL #10
NC0383010	LAURINBURG, CITY OF	A	C	SCOTLAND	L	W11	WELL #11
NC0383010	LAURINBURG, CITY OF	A	C	SCOTLAND	L	W12	WELL #12
NC0383010	LAURINBURG, CITY OF	A	C	SCOTLAND	L	W13	WELL #13
NC0383010	LAURINBURG, CITY OF	A	C	SCOTLAND	L	W20	WELL #20
NC0383020	WAGRAM, TOWN OF	A	C	SCOTLAND	L	W03	WELL #3
NC0383020	WAGRAM, TOWN OF	A	C	SCOTLAND	L	W06	WELL #6
NC0184020	OAKBORO, TOWN OF	A	C	STANLY	L	S03	WELL #3
NC0285015	WALNUT COVE, TOWN OF	A	C	STOKES	L	W01	WELL #1-FIRE STATION
NC0285015	WALNUT COVE, TOWN OF	A	C	STOKES	L	W02	WELL #2-FOWLER PARK
NC0285015	WALNUT COVE, TOWN OF	A	C	STOKES	L	W03	WELL #3
NC0285015	WALNUT COVE, TOWN OF	A	C	STOKES	L	W04	WELL #4-CLUB STREET
NC0285015	WALNUT COVE, TOWN OF	A	C	STOKES	L	W05	WELL #5-HWY 311
NC0285015	WALNUT COVE, TOWN OF	A	C	STOKES	L	W06	WELL #6-BICYCLES WELL
NC0285015	WALNUT COVE, TOWN OF	A	C	STOKES	L	W07	WALNUT TREE WELL
NC0285020	DANBURY, TOWN OF	A	C	STOKES	L	WH1	WELL #1
NC0285020	DANBURY, TOWN OF	A	C	STOKES	L	WH2	WELL #2
NC0188115	ROSMAN, TOWN OF	A	C	TRANSYLVANIA	L	W01	WELL #1
NC0188115	ROSMAN, TOWN OF	A	C	TRANSYLVANIA	L	W02	WELL #2
NC0188115	ROSMAN, TOWN OF	A	C	TRANSYLVANIA	L	W03	WELL #3
NC0188115	ROSMAN, TOWN OF	A	C	TRANSYLVANIA	L	W04	WELL #4
NC0489010	COLUMBIA WATER SYSTEM	A	C	TYRRELL	L	W01	COLUMBIA WATER WELL #1
NC0489010	COLUMBIA WATER SYSTEM	A	C	TYRRELL	L	W02	COLUMBIA WATER WELL #2

NC0489010	COLUMBIA WATER SYSTEM	A	C	TYRRELL	L	W03	COLUMBIA WATER WELL #3
NC0494010	PLYMOUTH WATER SYSTEM	A	C	WASHINGTON	L	W01	WELL #1
NC0494010	PLYMOUTH WATER SYSTEM	A	C	WASHINGTON	L	W03	WELL #3
NC0494010	PLYMOUTH WATER SYSTEM	A	C	WASHINGTON	L	W04	WELL #4
NC0494010	PLYMOUTH WATER SYSTEM	A	C	WASHINGTON	L	W05	WELL#5
NC0494010	PLYMOUTH WATER SYSTEM	A	C	WASHINGTON	L	W06	WELL #6
NC0494010	PLYMOUTH WATER SYSTEM	A	C	WASHINGTON	L	W07	WELL# 7
NC0494020	CRESWELL TOWN OF	A	C	WASHINGTON	L	W01	WELL #1
NC0494020	CRESWELL TOWN OF	A	C	WASHINGTON	L	W02	WELL #2
NC0195118	SEVEN DEVILS, TOWN OF	A	C	WATAUGA	L	W01	WELL #1
NC0195118	SEVEN DEVILS, TOWN OF	A	C	WATAUGA	L	W02	WELL #2
NC0195118	SEVEN DEVILS, TOWN OF	A	C	WATAUGA	L	W03	WELL #3
NC0195118	SEVEN DEVILS, TOWN OF	A	C	WATAUGA	L	W04	WELL #4
NC0195118	SEVEN DEVILS, TOWN OF	A	C	WATAUGA	L	W06	WELL #6
NC0195118	SEVEN DEVILS, TOWN OF	A	C	WATAUGA	L	W07	WELL #7
NC0496015	MOUNT OLIVE, TOWN OF	A	C	WAYNE	L	W01	WELL #1
NC0496015	MOUNT OLIVE, TOWN OF	A	C	WAYNE	L	W03	WELL #3
NC0496015	MOUNT OLIVE, TOWN OF	A	C	WAYNE	L	W04	WELL #4
NC0496015	MOUNT OLIVE, TOWN OF	A	C	WAYNE	L	W05	WELL #5
NC0197050	RONDA, TOWN OF	A	C	WILKES	L	W02	WELL #2
NC0197050	RONDA, TOWN OF	A	C	WILKES	L	W03	WELL #3
NC0498020	ELM CITY, TOWN OF	A	C	WILSON	L	300	BLOODFIELD WELL
NC0498020	ELM CITY, TOWN OF	A	C	WILSON	L	400	COBB CROSS RDS WELL

NC0498020	ELM CITY, TOWN OF	A	C	WILSON	L	500	ELM CITY SCHOOL WELL
NC0498020	ELM CITY, TOWN OF	A	C	WILSON	L	600	OAK VIEW WELL
NC0498025	STANTONSBURG, TOWN OF	A	C	WILSON	L	001	WELL #1
NC0498025	STANTONSBURG, TOWN OF	A	C	WILSON	L	002	WELL #2
NC0498025	STANTONSBURG, TOWN OF	A	C	WILSON	L	003	WELL #3
NC0498025	STANTONSBURG, TOWN OF	A	C	WILSON	L	004	WELL #4
NC0498025	STANTONSBURG, TOWN OF	A	C	WILSON	L	005	WELL #5
NC0498030	LUCAMA, TOWN OF	A	C	WILSON	L	W03	WELL #3
NC0498030	LUCAMA, TOWN OF	A	C	WILSON	L	W04	WELL #4
NC0498030	LUCAMA, TOWN OF	A	C	WILSON	L	W05	WELL #5
NC0498035	BLACK CREEK, TOWN OF	A	C	WILSON	L	W01	WELL #1
NC0498035	BLACK CREEK, TOWN OF	A	C	WILSON	L	W03	WELL #3
NC0498035	BLACK CREEK, TOWN OF	A	C	WILSON	L	W05	BLK CREEK WELL #5
NC0498035	BLACK CREEK, TOWN OF	A	C	WILSON	L	W08	WELL #8
NC0498040	SARATOGA TOWN OF	A	C	WILSON	L	W02	WELL #2
NC0498040	SARATOGA TOWN OF	A	C	WILSON	L	W03	WELL #3
NC0498045	SIMS TOWN OF	A	C	WILSON	L	003	WELL #3
NC0299015	YADKINVILLE, TOWN OF	A	C	YADKIN	L	S01	WELL #1
NC0299020	BOONVILLE, TOWN OF	A	C	YADKIN	L	CWR	HALL PROP CORNFIELD WELL
NC0299020	BOONVILLE, TOWN OF	A	C	YADKIN	L	DWR	DEPOT STREET WELL
NC0299020	BOONVILLE, TOWN OF	A	C	YADKIN	L	WWR	WILLIAMS STREET WELL