

“The greatest potential lies
in solutions that will help people
choose health and safety. That means
both **strengthening individuals’ ability**
to make choices that improve health
and safety and **removing obstacles**
to choosing health and safety.”

-RWJ Foundation

“The greatest potential lies
in solutions that will help people
choose what is best for them. That means
both strengthening individuals’ ability
to make choices that improve health
and safety and removing obstacles
to choosing health and safety.”

How does it drive our Strategy?

DSS Strategic Drivers

Choice

All individuals and families should have an opportunity to make choices that support their health and safety

Support

Our job is to support individuals and families so that they can be self-sufficient, and make good choices regarding their health and safety.

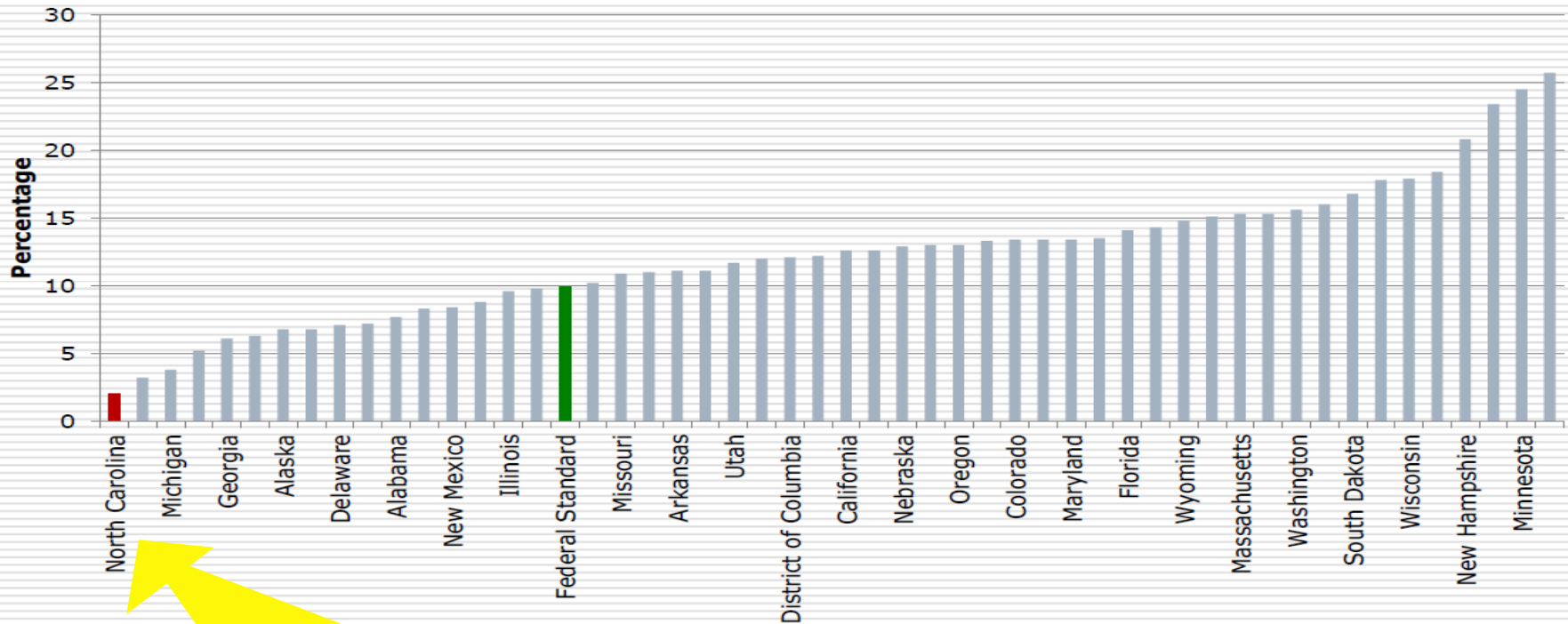
Opportunity

The opportunity for health and safety begins in our families, neighborhoods, schools and jobs – in short, in our communities.

Why Local Administration is Critical

- Core government services are most effective when they are united with community partners and designed and delivered within the context of the community.
- Each community has unique resources to tap into in order to leverage state, federal and local funds
- Significant local funding investments in DSS mandated services

NC leads the Nation - #1



THE UNIVERSITY
of NORTH CAROLINA
at CHAPEL HILL

Lowest % of Children Re-Entering Foster Care

Why is this Important?

- Less likely to finish high school
- Less likely to go to college
- Less likely to have a paying job
- Poorer health outcomes
- More likely to be homeless
- More likely to be in prison
- Live shorter lives



Kids positioned for Success



Positioning NC DSS Agencies for **Continued Success**



Outcomes Driven



Customer Service



Interventions that support personal responsibility



Partnerships Community – county-state across county lines



Simplified Processes & Technology



Capitalizing on Unique County Assets

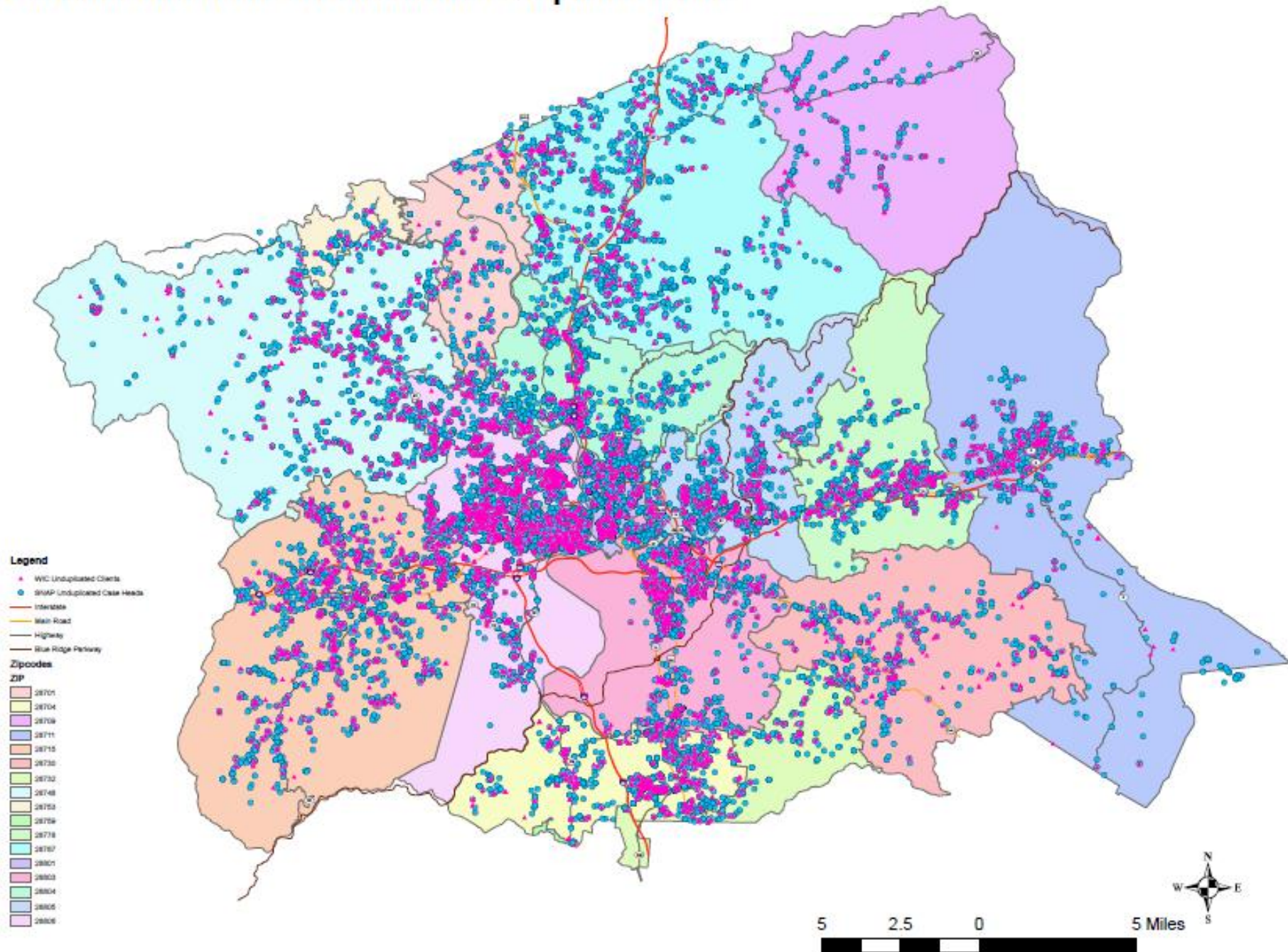


We are strongest when we...

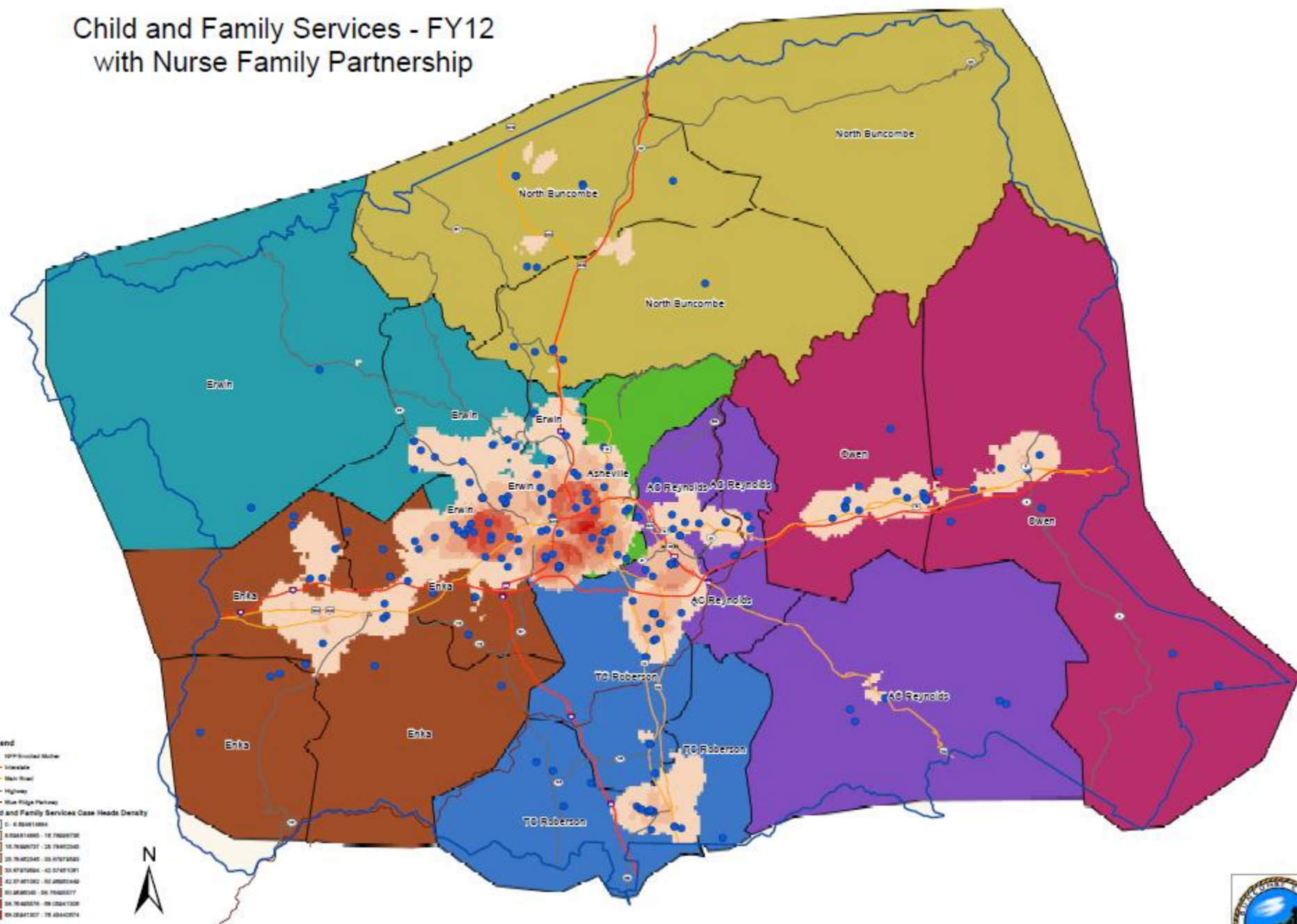
- Target our efforts reaching across agencies and programs to work in ways that have a greater impact than any individual service or program
- Engage citizens to ensure accountability
- Share tools and data
- Invest in what is working
- Replicate those programs and investments for greater impact



Food and Nutrition Services/WIC Recipients FY12



Child and Family Services - FY12 with Nurse Family Partnership



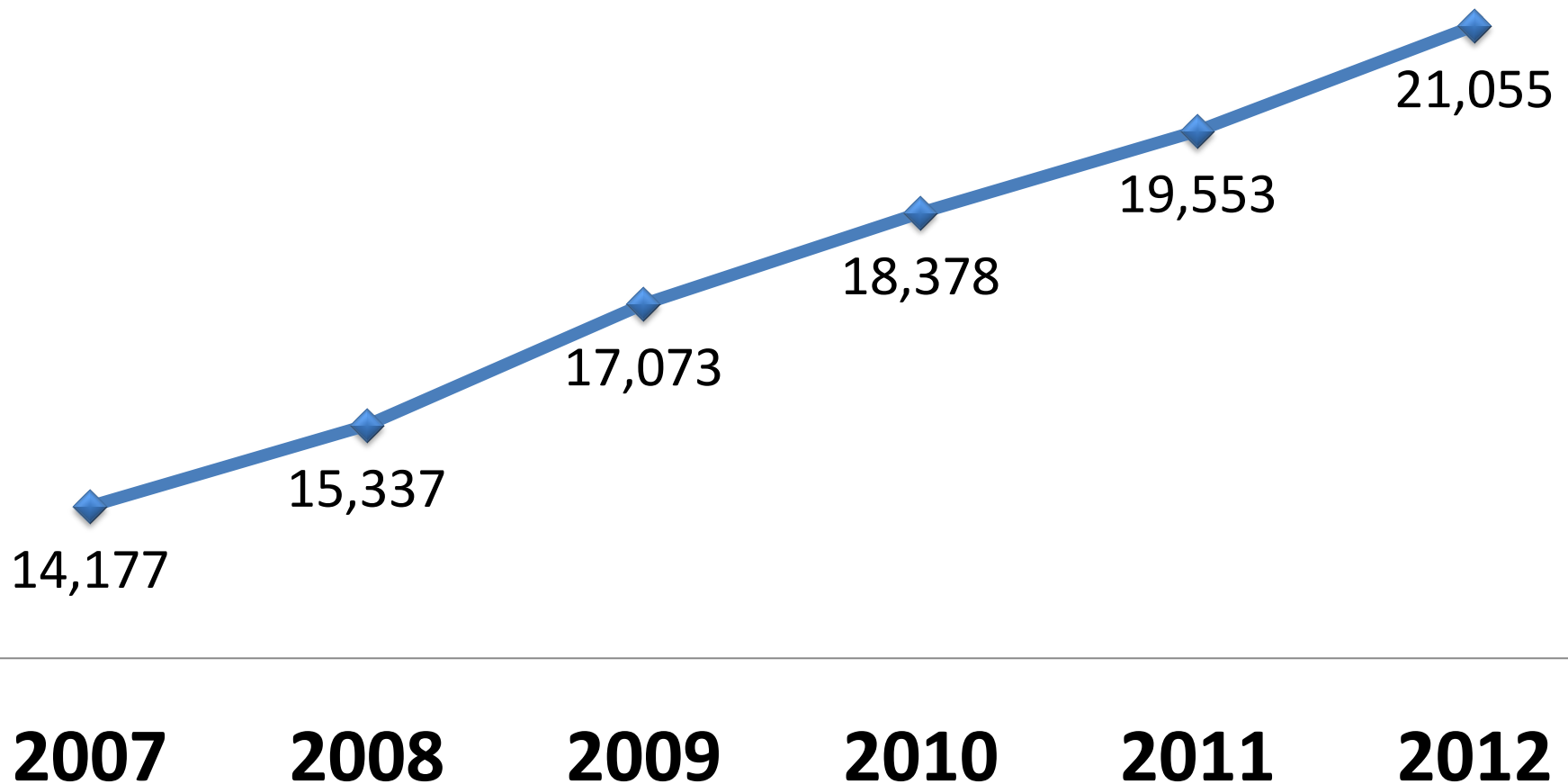
Opportunities for redesigning DSS through a new Business Architecture



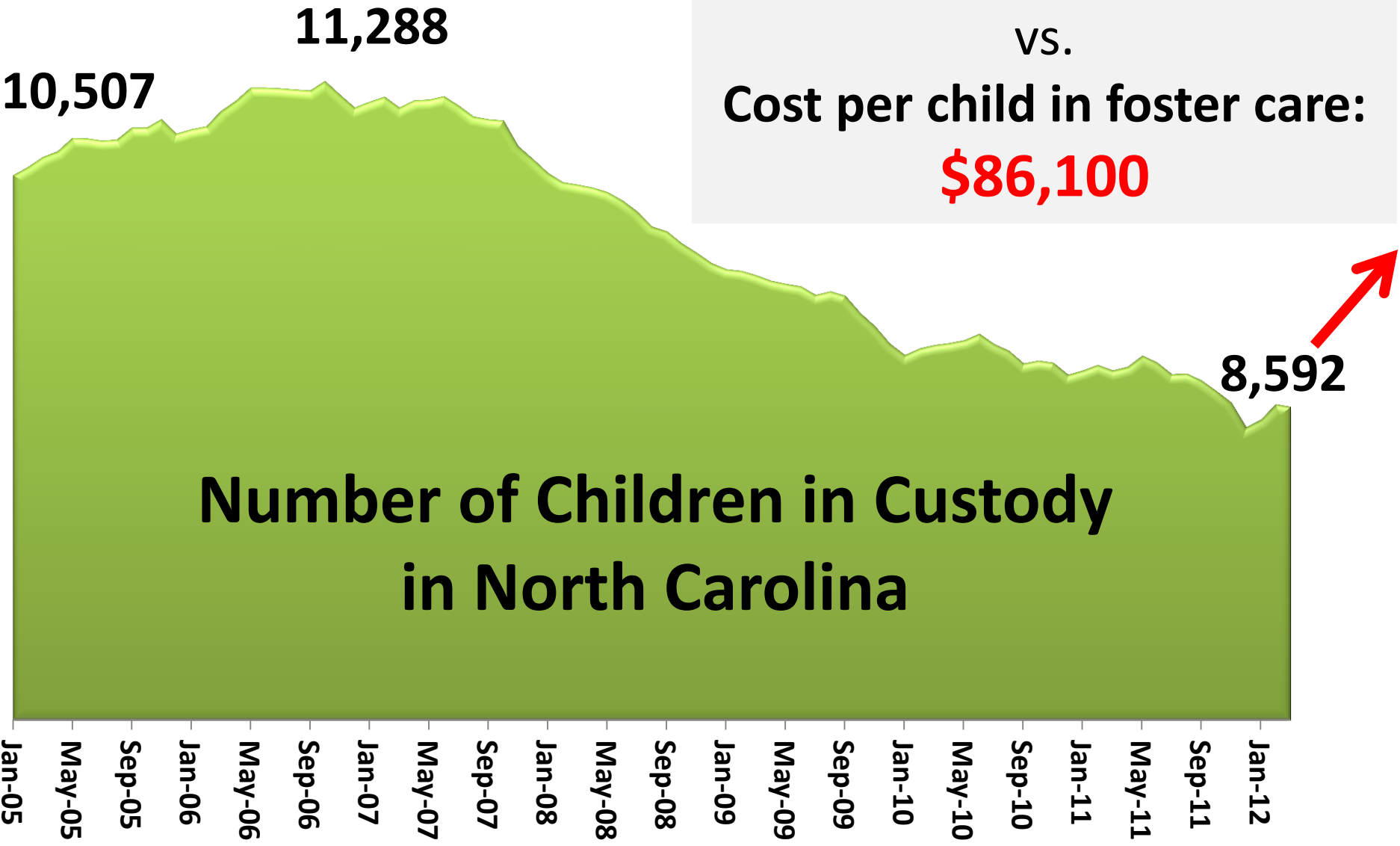
Social Services Legislative Priorities

- ✓ Fully fund mandated services first from Federal Block Grants (TANF & SSBG)
- ✓ Fund Mandated Guardianship Services to Protect Seniors and Disabled Adults
- ✓ Fill the Gap Created by Federal IV-E Funding Cut to protect Abused and Neglected Children
- ✓ Maximize Child Care Subsidy Funding to Benefit NC's Eligible Children

NC Total Number of Adult Protection Reports



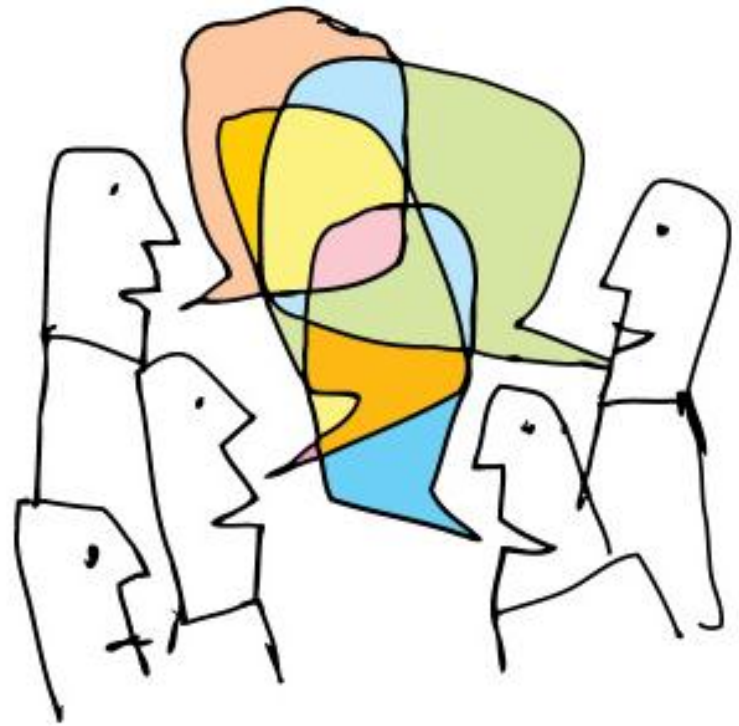
Cost of in-home intervention
with a family: **\$7,728**
vs.
Cost per child in foster care:
\$86,100



**Number of Children in Custody
in North Carolina**

Breaking down silos across state departments

- Many of the challenges we face require cooperative work across HHS Departments
 - Example: Adult Care Homes, Early Childhood Education, etc.



Investment in Technology & Simplification

Increased Efficiencies and Effectiveness through:

- Continued funding for NC Fast
- Continued focus on Policy Simplification
- Connected, Integrated case management systems
- Enable real time sharing across counties
- IT Supports for Program Integrity





Sustainability is about making good decisions now and for the future.





Buncombe County Health and Human Services

Public Health ~ Adult & Children's Protective Services ~ Economic Services & Work Strategies
Parks, Greenways & Recreation ~ Human Resources, Services Support & Finance

Amanda Stone, MSW
Health and Human Services Director

Mandy Stone, MSW

Assistant County Manager/Health and Human Services Director

Buncombe County Health and Human Services

828-250-5587

mandy.stone@buncombecounty.org