

# NC FAST

North Carolina Families Accessing  
Services through Technology

## High-Level Program Status

**Joint Legislative Oversight Committee on HHS**  
**October 16, 2012**

**Anthony Vellucci, Director, Office of NC FAST**





## **Today's discussion includes the following:**

- Program Areas Impacted by NC FAST
- High-Level Project Timeline
- Expenditures
- Case Management Project 1: Global Case Management and FNS
- Case Management Project 2&6: Eligibility Information System
- Case Management Project 3: LIEAP, Child Care, and CIP
- Case Management Project 4: Child Services
- Case Management Project 5: Aging and Adult Services
- ePASS Project
- Document Management Project
- Health Benefit Exchange Project
- Questions



## 9 NC DHHS Program Areas Impacted by NC FAST

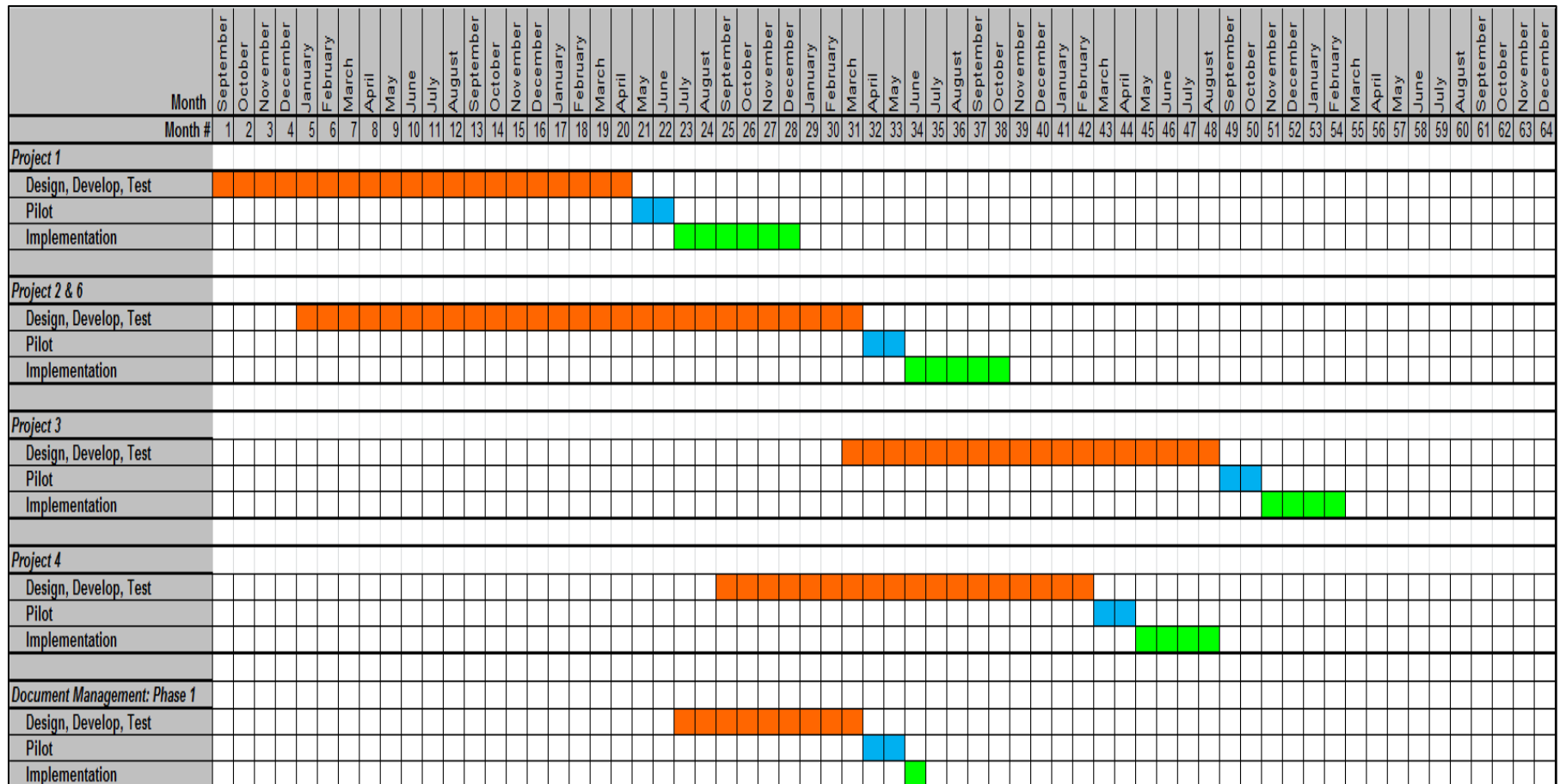
### Economic Benefits

- Child Care
- Food and Nutrition Services
- Medicaid
- Work First
- Energy Assistance
  - Low Income Energy Assistance Program (LIEAP)
  - Crisis Intervention Program (CIP)
- Special Assistance
- Refugee Assistance

### Services

- Child Welfare
- Adult and Family Services

The following timeline shows the scheduled design, development, test, pilot and implementation dates for NC FAST projects.



The rate of expenditures is 91.13% (percent of year-to-date expenditures to SFY 2013 APDu budgeted expenditures).

Project	Oct. 1, 2003 June 30, 2009	SFY 09-10	SFY 10-11	SFY 11-12	SFY 12-13	Total
<b>Completed Projects</b>	<b>\$ 25,253,435.51</b>	<b>\$ 7,317,745.21</b>	<b>\$ 46,972.14</b>	<b>\$ -</b>	<b>\$ -</b>	<b>\$ 32,618,152.86</b>
NC FAST Program Overhead Cost	\$ -	\$ 3,972,735.56	\$ 3,736,736.99	\$ 8,158,557.63	\$ 1,570,857.65	\$ 17,438,887.83
Global Case Management & FNS	\$ -	\$ 2,286,072.35	\$ 12,777,095.67	\$ 21,256,009.40	\$ 5,252,266.30	\$ 41,571,443.72
EIS Part 1 & 2	\$ -		\$ 2,895,580.46	\$ 22,349,476.52	\$ 5,344,001.15	\$ 30,589,058.13
ePASS Phase 2 Medicaid	\$ -		\$ 61,248.87	\$ 462,613.34	\$ 101,361.50	\$ 625,223.71
ePASS Phase 3 FNS	\$ -			\$ 43,227.14	\$ 8,363.99	\$ 51,591.13
Client Services Data Warehouse	\$ -		\$ 1,329.63	\$ 289,476.69	\$ 552,747.26	\$ 843,553.58
Document Management	\$ -	\$ -	\$ -	\$ 38,990.49	\$ 68,443.48	\$ 107,433.97
Child Welfare	\$ -	\$ -	\$ -		\$ -	\$ -
<b>Total Expenditures</b>	<b>\$ 25,253,435.51</b>	<b>\$ 13,576,553.12</b>	<b>\$ 19,518,963.76</b>	<b>\$ 52,598,351.21</b>	<b>\$ 12,898,041.33</b>	<b>\$ 123,845,344.93</b>
<b>Federal Funds</b>						
53886C Medicaid Administration and Training	\$ 2,080,327.01	\$ 1,131,608.64	\$ 4,075,553.54	\$ 42,913,416.98	\$ 11,144,707.91	\$ 61,345,614.08
53886D CHIP				\$ 976,651.08	\$ -	\$ 976,651.08
53887E Child Support Enforcement - Title IV-D	\$ 447,118.25	\$ -	\$ -	\$ -	\$ -	\$ 447,118.25
53887K Foster Care Administration - Title IV-E	\$ 625,226.16	\$ 149,579.76	\$ (16,873.81)	\$ 8,338.84	\$ -	\$ 766,270.95
53887L Adoption Assistance - Title IV-E	\$ 135,038.64	\$ 149,579.77	\$ (33,894.43)	\$ 521.59	\$ -	\$ 251,245.57
53887P LIEAP				\$ 963,459.35	\$ -	\$ 963,459.35
53888C Food Stamps - USDA	\$ 2,307,659.01	\$ 1,131,608.52	\$ 3,469,632.62	\$ 1,715,082.59	\$ 221,240.24	\$ 8,845,222.98
53888K Temporary Assistance for Needy Families	\$ 3,783,011.51	\$ 1,199,912.49	\$ -	\$ 305,431.24	\$ -	\$ 5,288,355.24
<b>Total Federal Funds</b>	<b>\$ 9,378,380.58</b>	<b>\$ 3,762,289.18</b>	<b>\$ 7,494,417.92</b>	<b>\$ 46,882,901.67</b>	<b>\$ 11,365,948.15</b>	<b>\$ 78,883,937.50</b>
<b>Intragovernmental Transactions*</b>						
4381D1995 NC FAST Automation (State funds)	\$ 3,979,075.95				\$ -	\$ 3,979,075.95
4381C1 Transfer from Public Health	\$ -			\$ 7,234,878.00	\$ -	\$ 7,234,878.00
4381J1 Transfer from Division of Social Services/Budget Code 14440 (State Funds)	\$ 1,300,272.00	\$ -	\$ -	\$ -	\$ -	\$ 1,300,272.00
4381XX Central Admin. Internal Transfers	\$ 9,730.00	\$ 28,210.00	\$ 28,210.00	\$ 1,543,482.00	\$ -	\$ 1,609,632.00
4381J2 Transfer from Division of Social Services/Budget Code 24441 (Food Stamp Incentive Funds)	\$ -	\$ 18,327,478.00				\$ 18,327,478.00
437117 Rebates	\$ 44.50	\$ -	\$ -	\$ -	\$ -	\$ 44.50
<b>Total Intragovernmental Transactions</b>	<b>\$ 5,289,122.45</b>	<b>\$ 18,355,688.00</b>	<b>\$ 28,210.00</b>	<b>\$ 8,778,360.00</b>	<b>\$ -</b>	<b>\$ 32,451,380.45</b>
<b>Total Revenues (Federal Funds + Intragovernmental Transactions)</b>	<b>\$ 14,667,503.03</b>	<b>\$ 22,117,977.18</b>	<b>\$ 7,522,627.92</b>	<b>\$ 55,661,261.67</b>	<b>\$ 11,365,948.15</b>	<b>\$ 111,335,317.95</b>
<b>Total NC FAST State Appropriations</b>	<b>\$ 10,585,932.48</b>	<b>\$ (8,541,424.06)</b>	<b>\$ 11,996,335.84</b>	<b>\$ (3,062,910.46)</b>	<b>\$ 1,532,093.18</b>	<b>\$ 12,510,026.98</b>



# Project 1: Global Case Management and FNS

## Status

- Hard Launch approach was divided into 2 stages: (1) turn off capability to enter new applications in FSIS; and (2) turn off processing in FSIS entirely.
- Training approach was revised to two 2.5 day sessions, rather than 1 full week of training. Session 1 occurs before Soft Launch; Session 2 occurs before Hard Launch Stage 2; this provides additional focus on hands-on opportunities and quicker access to NC FAST upon completion of training.
- 4 Pilot Counties have completed Hard Launch and are fully using the production system. 1 Pilot County still uses FSIS for some recertifications and will Hard Launch in December.
- The Pilot Counties have begun to see productivity gains in using NC FAST. While initially learning the system, the counties experienced a loss in productivity. Once past the learning curve, savings were achieved and sustained going forward.
- All 100 counties will be Soft Launched by October 19. As of Monday, October 15, 94 counties are Soft Launched (not including the 4 Pilot Counties), with 300-350 users being trained to Soft Launch each week.



# Project 1: Global Case Management and FNS

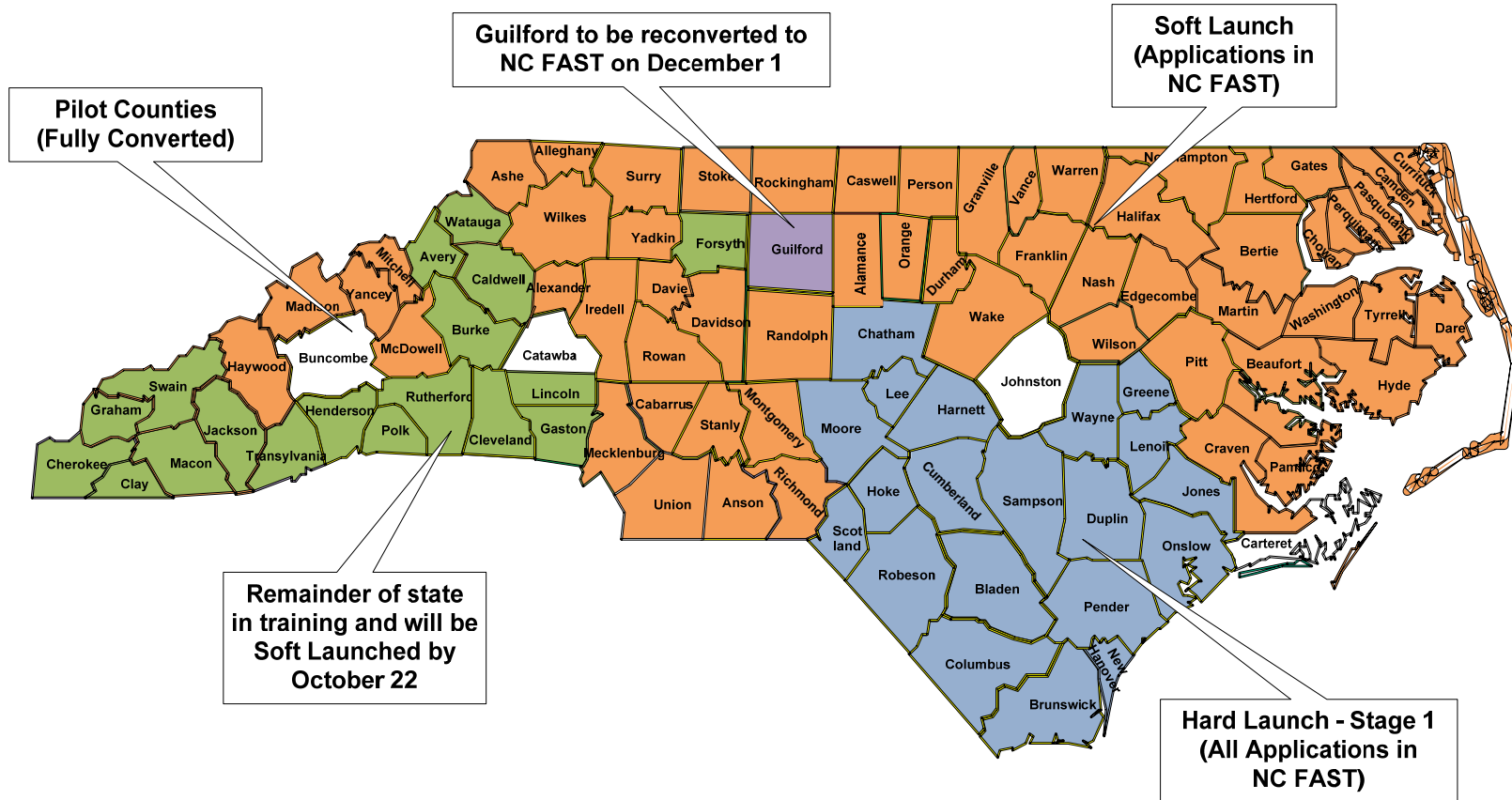
## **Status (continued)**

- The schedule for upcoming Hard Launches has recently been published. Full statewide NC FAST implementation will be completed February 2013.
- The schedule for Project 2&6 implementation has been drafted and will be published in the coming weeks.
- Supported 86,720 issuances for active FNS and SNAP cases in September, representing approximately \$84M in FNS benefits issued since go-live.
- Responded to nearly 5000 Help Desk tickets since go-live. Due to lessons learned, NC FAST has increased its onsite support staff to support the counties directly for the first few weeks after their Hard Launch Stage 2 implementation.
- Reviewing, developing and testing high priority defects and enhancements for release on weekly basis.



# Project 1: Global Case Management and FNS

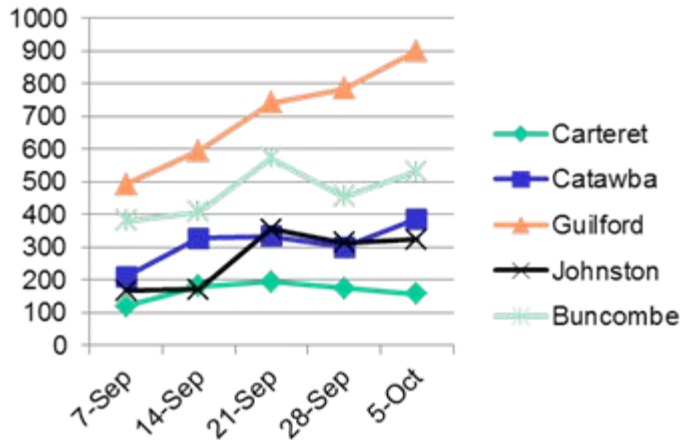
## Implementation Status



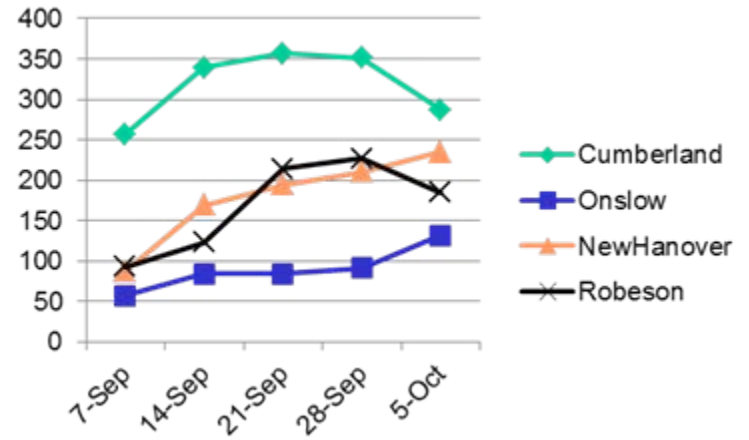




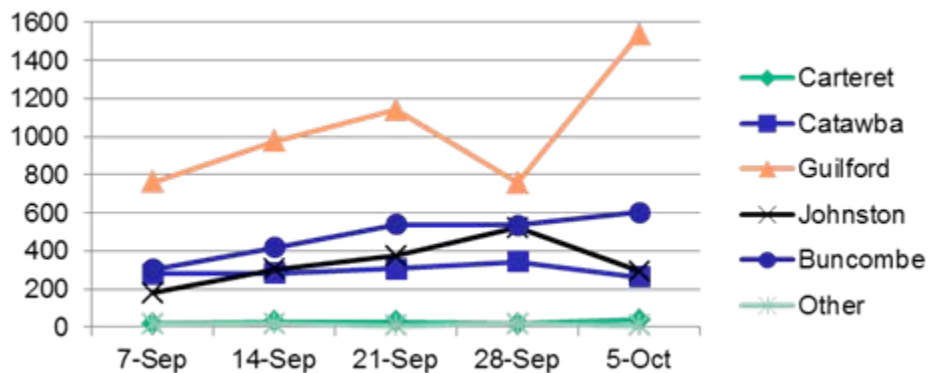
# Project 1: Global Case Management and FNS



New Cases by Week  
Pilot Counties



New Cases by Week  
Other Counties



Recertifications by Week



# Project 1: Global Case Management and FNS

## Recertification Statistics

FNS Monthly Activity Trends - New Apps and Recerts (as of October 3, 2012)														
County	New Applications Processed					Last Certified Month	Month Closed if not Recertified	Total Potential Recertifications	Recertifications Completed				Recertifications Closed Automatically	% Recertifications Closed Automatically
	Completed Month	In NC FAST	In FSIS	TOTAL	% In FSIS				In NC FAST	In FSIS	TOTAL	% In FSIS		
Buncombe (11)														
Converted 7/21	February		1,433	1,433	100%	February	March	3,124		2,273	2,273	100%	663	21%
	March		1,341	1,341	100%	March	April	2,938		2,199	2,199	100%	612	21%
	April		1,261	1,261	100%	April	May	3,013		1,990	1,990	100%	556	18%
	May		1,403	1,403	100%	May	June	2,614		1,427	1,427	100%	683	26%
	June	491	842	1,333	63%	June	July	3,025	32	2,056	2,088	98%	746	25%
	July	969	54	1,023	5%	July	August	3,120	931	1,275	2,206	58%	787	25%
	August	1,553		1,553	0%	August	September	4,800	3,368		3,368		752	16%
	September	1,123		1,123	0%	September	October	3,827	2,383		0			
	October	94		94	0%	October	November	3,206	122		122			
Carteret (16)														
Converted 5/26	February		350	350	100%	February	March	667		503	503	100%	131	20%
Converted 9/1	March		361	361	100%	March	April	695		493	493	100%	137	20%
	April		328	328	100%	April	May	736	14	475	489	97%	136	18%
	May	65	291	356	82%	May	June	507	34	278	312	89%	122	24%
	June	257	0	257	0%	June	July	738	51	415	466	89%	190	26%
	July	233	14	247	6%	July	August	798	336	63	399	16%	119	15%
	August	328	1	329	0%	August	September	816	207	0	207	0%	134	16%
	September	217		217	0%	September	October	768	78		78			
	October	22		22	0%	October	November	779	16		16			
Catawba (18)														
Converted 5/26	February		819	819	100%	February	March	2,010		1,653	1,653	100%	325	16%
Converted 9/1	March		926	926	100%	March	April	1,942		1,531	1,531	100%	311	16%
	April		802	802	100%	April	May	2,065		1,496	1,497	100%	351	17%
	May	222	700	922	76%	May	June	1,902	416	521	937	56%	427	22%
	June	861	0	861	0%	June	July	2,722	1,825	780	2,605	30%	518	19%
	July	909	0	909	0%	July	August	3,184	2,236	305	2,541	12%	381	12%
	August	1,067	0	1,067	0%	August	September	3,664	2,964	17	2,981	1%	389	11%
	September	777		777	0%	September	October	2,682	1,638		1,638			
	October	90		90	0%	October	November	2,285	14		14			
Guilford (41)														
Converted 5/26	February		3,037	3,037	100%	February	March	7,038		5,295	5,295	100%	1,356	19%
	March		2,754	2,754	100%	March	April	6,684		4,933	4,933	100%	1,486	22%
	April		2,284	2,284	100%	April	May	6,383	44	4,251	4,295	99%	1,463	23%
	May	302	2,362	2,664	89%	May	June	6,488	925	4,296	5,221	82%	1,734	27%
	June	2,575	23	2,598	1%	June	July	7,799	294	5,675	5,969	95%	2,275	29%
	July	2,504	7	2,511	0%	July	August	11,168	9,320	35	9,355	0%	2,022	18%
	August	2,643	6	2,649	0%	August	September	11,010	8,366	15	8,381	0%	2,774	25%
	September	1,883	1	1,884	0%	September	October	7,305	1,960	3	1,963	0%		
	October	266		266	0%	October	November	6,407	173	0	173	0%		
Johnston (51)														
Converted 5/26	February		875	875	100%	February	March	1,822		1,518	1,518	100%	3	0%
Converted 9/1	March		960	960	100%	March	April	1,926		1,509	1,509	100%	2	0%
	April		825	825	100%	April	May	1,881	10	1,450	1,460	99%	248	13%
	May	157	554	711	78%	May	June	1,754	320	439	759	58%	322	18%
	June	773	16	789	2%	June	July	1,901	721	1,218	1,939	63%	416	22%
	July	808	62	870	7%	July	August	2,728	1,605	575	2,180	26%	334	12%
	August	914	5	919	1%	August	September	3,540	2,967	37	3,004	1%	344	10%
	September	590		590	0%	September	October	3,099	2,447		2,447			
	October	67		67	0%	October	November	2,324	176		176			



# Project 2&6: Eligibility Information System (EIS)

## Status

- Project 2&6 has approximately 2500 Business System Functions (BSFs) covering program functionality for Medicaid, Work First, Special Assistance, and Refugee Assistance.
- Detail Design (DD) is in progress: 31 of 152 designs remain to be completed (73% of Application DD complete, 97% of Rules DD complete, 74% of Interface DD complete), as of 10/10.
- Build of conversion data maps is 98% complete (134 of 137 data maps). Additional tables were added in the last few weeks.
- Reports development is in progress. There are a total of 89 CSDW reports; 13 data only reports, and 42 management reports.
- Test conditions and scripts are in progress. Additional conditions and scripts were added in the last few weeks. 62% of test conditions and 3% of test scripts have been signed-off.
- The Application Development Team has started 81 of 272 units of work. Of the 81 units that have been started, 26 are complete as of 10/5.



# Project 3: LIEAP, Child Care, and CIP

## Status

Project 3 has not yet started; tentatively planned for March 2013 - February 2015.

## Scope

- Screening, intake and assessment for LIEAP, Child Care, and CIP.
- Eligibility determination and benefit delivery for LIEAP, Child Care, and CIP.
- Legacy System replacement: LIEAP, Subsidized Child Care Reimbursement (SCCR), and CIP.

## Definitions

- LIEAP (Low Income Energy Assistance Program): Provides an annual payment to help eligible families pay their heating bills.
- Child Care Program: Provides financial assistance to eligible families through county departments of social services to help pay for child care.
- CIP (Crisis Intervention Program): Provides assistance to low-income families who are experiencing or in danger of experiencing a heating or cooling related crisis.



## Project 4: Child Services

### Status

- Project 4 began in September 2012. At this time, the project has a duration of 2 years. However, the detailed gap analysis is under way, and the timeline will be adjusted based on the findings of the analysis.
- To address the counties' urgent need for a comprehensive statewide child services system, Project 4 is being expedited in the schedule. NC FAST, DHHS, and the federal partners are currently finalizing the proposed scope, cost and schedule for funding approval.
- Phase 1 activities such as initial Project Plan preparation, Staffing Plan preparation and PPM access readiness are waiting final approval.
- The Business Team was on-boarded the second week of September. Kickoff and initial tasks began the same week, followed by 1 week of Cúram Business training.
- Reassessment of the original Business System Functions (BSFs) is in final review. The BSF reassessment will drive a more detailed gap analysis followed by functional BSF walkthroughs.



# Project 5: Aging and Adult Services

## Status

Project 5 has not yet started; tentatively planned for July 2015 through June 2017.

## Scope

- Screening, intake and assessment for Adult Protective Services (APS) and general services.
- Facilities and service providers' licensure support.
- Service planning and provision of services.
- Resident Assessment Instrument (RAI) and general assessments.
- Guardianship services.
- Placement and payment for residential care.
- Adult care home case management.
- Court activities.
- Legacy System replacement: APS, Services Information System (SIS), Daysheets, Disinterested Public Agent Guardians (DPAG), SA In-Home.



## **Status**

- Completed Phase 2 Medicaid production deployment.
- Documented business requirements for Phase 3 FNS.
- Continued working with the software vendor on outstanding items to continue design development.
- Completed development, associated testing and implementation for the 2012-2013 COLA changes.



## Status

- The high-level Business Requirements and Functional Requirements Specification have been approved.
- In process of analyzing options for the solution to provide a recommendation for the high-level solution.
- Will submit recommendation, continue work on Project Staffing Plan and Project Work Plan, and continue work on project management approach document.





## Status

- NC FAST staff has been in conversations with US DHHS about possibly operating eligibility and enrollment functionality for the exchange.
- Due to the fact that NC FAST is ahead of most other states, North Carolina is better positioned compared to other states to handle the eligibility and enrollment.



# Questions?