

JOINT LEGISLATIVE OVERSIGHT COMMITTEE ON HEALTH AND HUMAN SERVICES

NC Department of Health and Human Services

COVID-19 Overview

Kody H. Kinsley
Secretary

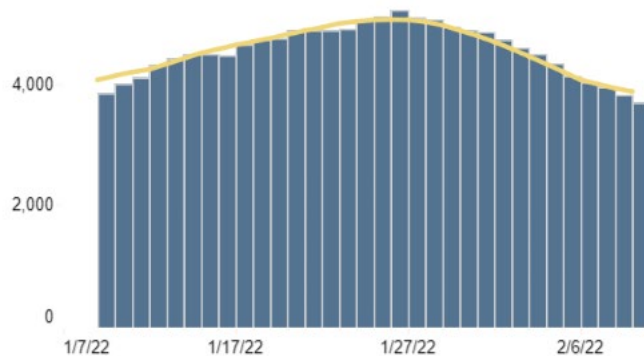
February 15, 2022

Agenda

- 1. COVID-19 Trends**
- 2. NC Actions**

Hospital and ICU Trends

Currently Hospitalized COVID-19 Patients | Statewide



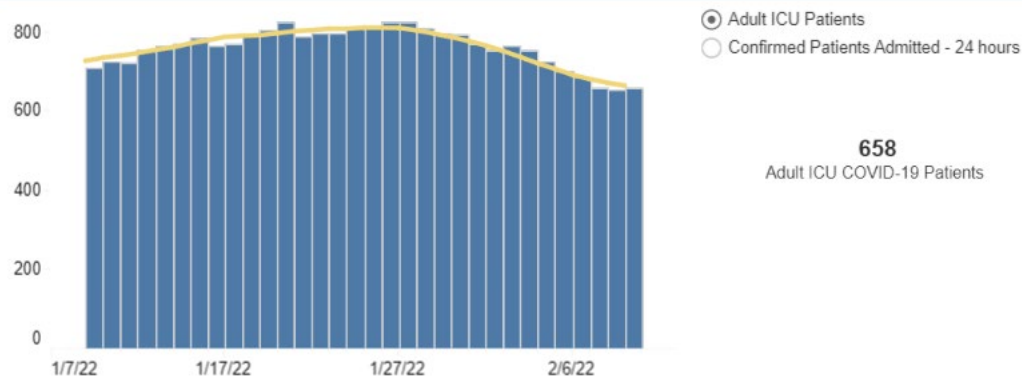
3,686

Currently Hospitalized

96%

Hospitals Reporting

Number of COVID-19 Adult ICU Patients | Statewide

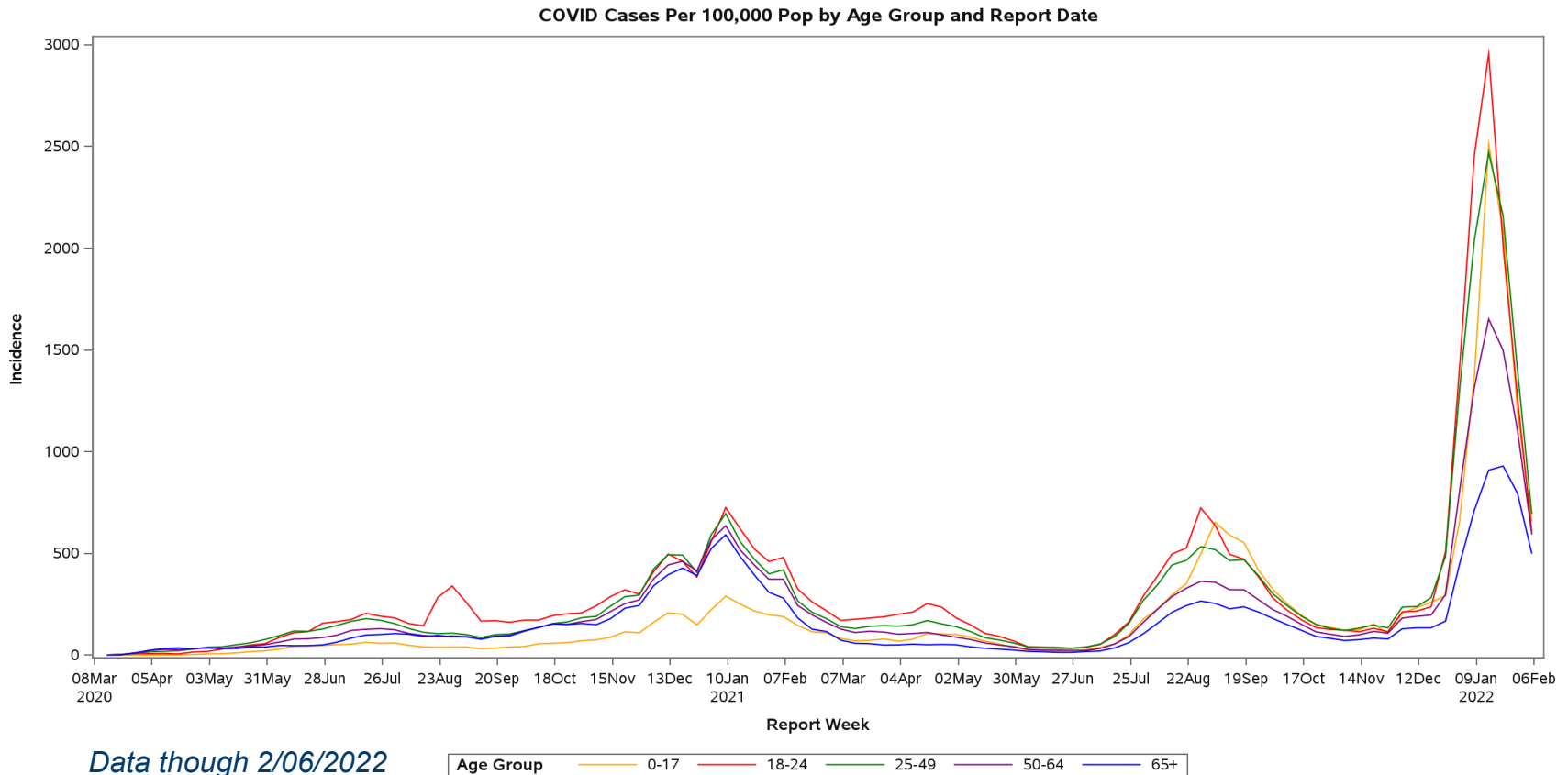


658

Adult ICU COVID-19 Patients

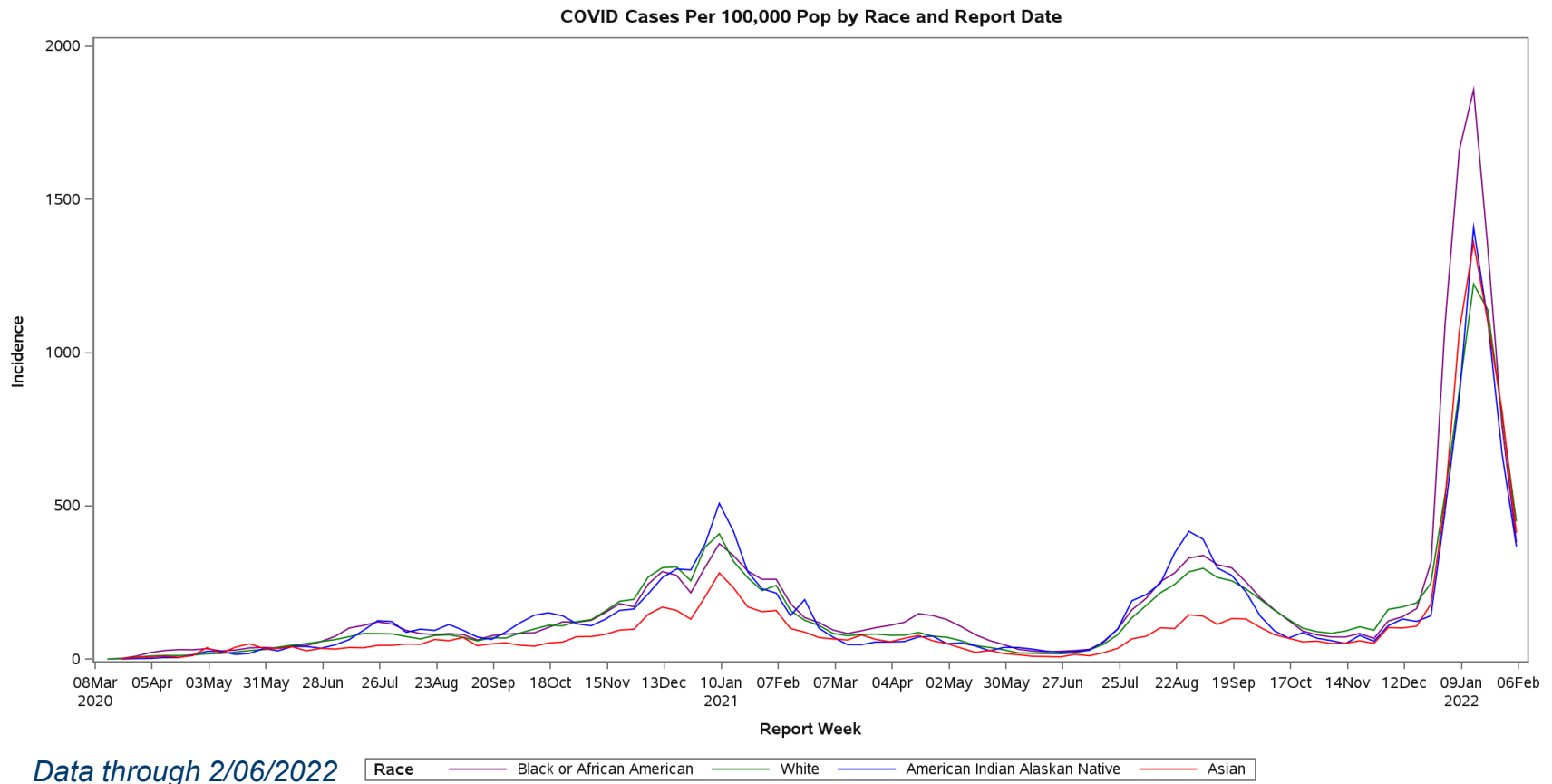
Case Rates Continue to Decline

Record declines compared to prior week; rates highest among younger age groups.



Racial Disparities Are Narrowing

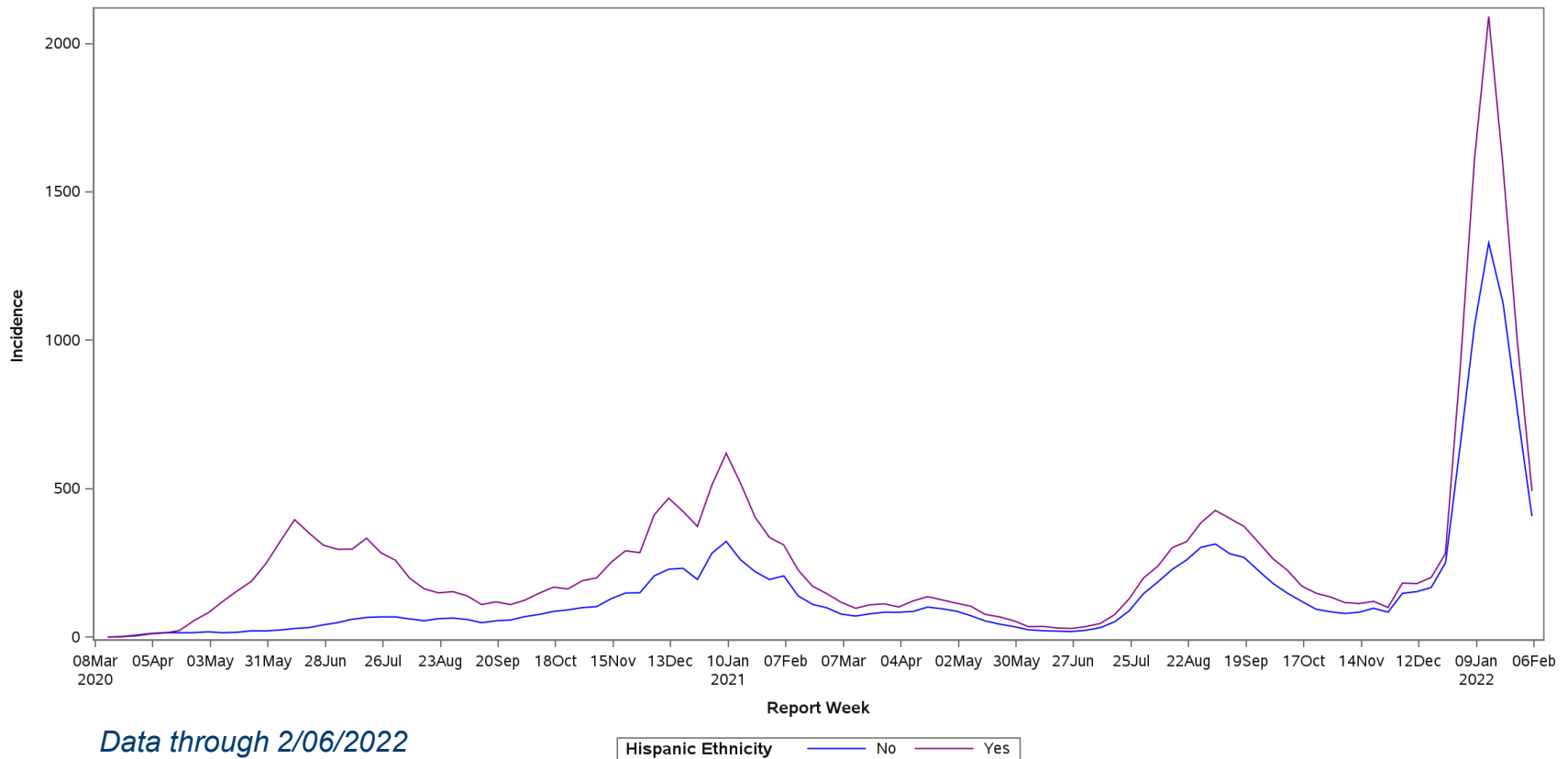
Reported case rates converging for White, Black/African American, and Asian populations.



Ethnic Disparities Persist but Narrowing

Reported case rates starting to converge for Hispanic and Non-Hispanic Populations.

COVID Cases Per 100,000 Pop by Ethnicity and Report Date



FDA/CDC COVID Booster Eligibility and Recommendation

Which primary vaccine series did you complete?	Pfizer-BioNTech	Moderna	Janssen (J&J)
<p>You should get a booster if:</p>	<p>It's been at least 5 months since completing the primary series AND you are:</p>	<p>It's been at least 5 months since completing the primary series AND you are:</p>	<p>It's been at least 2 months since completing the primary series AND you are:</p>
	<p>Age 12+</p>	<p>Age 18+</p>	<p>Age 18+</p>
<p>If eligible, you can get a booster of:</p>	<p>✓ Pfizer BioNTech* ✓ Moderna ✓ Janssen (J&J) *Only Pfizer-BioNTech can be used as a booster in those age 12-17</p>	<p>✓ Moderna ✓ Pfizer BioNTech ✓ Janssen (J&J)</p>	<p>✓ Janssen (J&J) ✓ Pfizer BioNTech ✓ Moderna</p>
<p>If eligible for a booster shot according to the guidelines above:</p> <p>A booster for immunocompromised individuals who obtained an additional dose is available for:</p>	<p>Booster qualified people age 5+ who are moderately or severely immunocompromised and have received an additional third dose</p>	<p>Booster qualified people age 18+ who are moderately or severely immunocompromised and have received an additional third dose</p>	<p><i>No additional primary dose has been authorized at this time, therefore a fourth dose is not applicable for this brand</i></p>

Testing Response by the Numbers

As of Feb 9, 25,014,728 tests have been completed in North Carolina through the pandemic. In January 2021 we performed 2,627,371 tests, including 11 days with more than 100,00 tests.

Working with our Community

- **3.3M rapid tests shipped** to community partners since 12/2020 **with 441,038 rapid tests shipped during Omicron Response** (12/23-1/31).
- **1,214,497 HMP Tests** (59% of total vendor tests) performed by vendors at community events that serve HMP populations.
- **2,283 schools** (65% of total schools in NC) opted into our K12 Testing program.

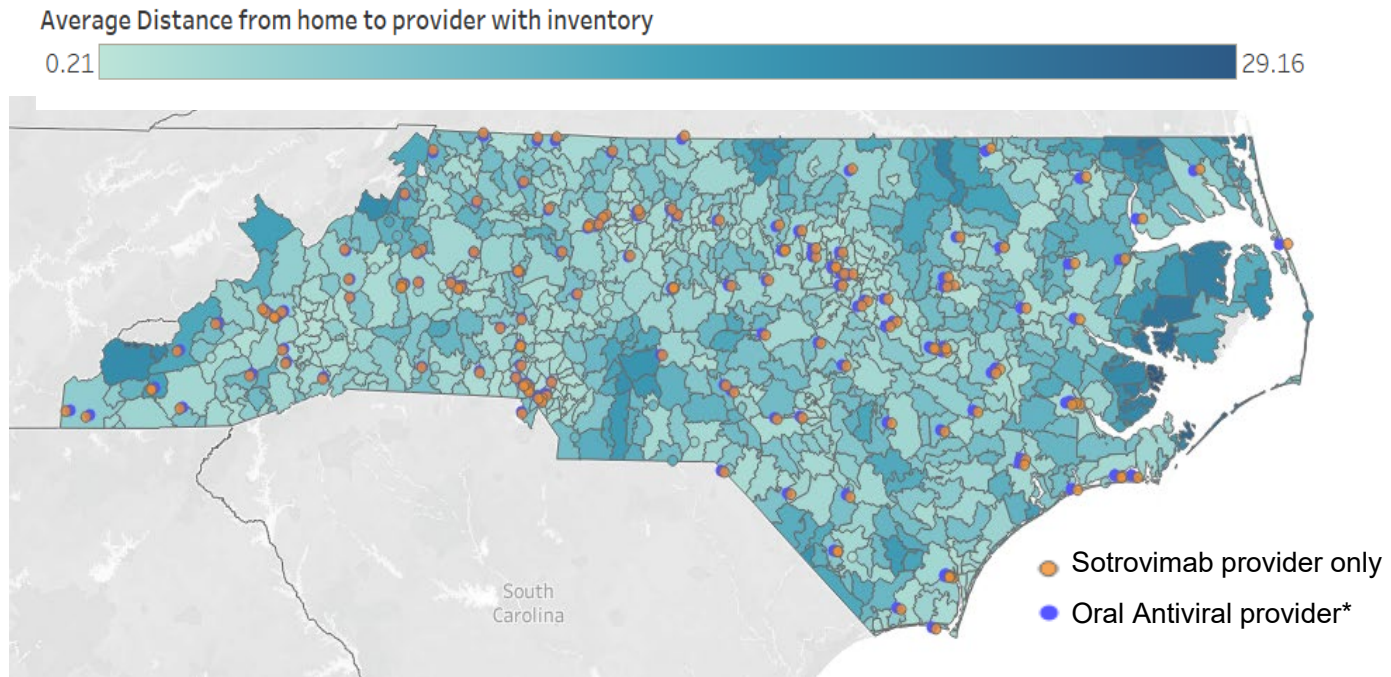
Ensuring supply

- To date, vendors have hosted testing at 5,800 unique sites throughout the state.
- Worked with 7 manufacturers and 14 community testing vendors to supply tests during Omicron surge. 1.8M rapid tests purchased for surge.
- Working with Healthier Together to support community testing needs

Deep Dive into our Testing Response since Jan 2020

Treatments are available but are in very limited supply

The map below displays all providers with on-hand treatment options in relation to the average travel distance between a home and a displayed provider



* Some providers have both Sotrovimab and Oral Antivirals on hand

Equity Highlights

Measuring Community Impact (To Date)

1.7M+

Individuals served
by Community
Health Workers

480K+

NCCARE360 referrals
by Community Health
Workers

14K+

Individuals vaccinated
at Healthier Together
events

560K+

N95 masks
distributed by
Healthier Together

10K+

Food boxes delivered
through Support
Services Program 2.0

Leading with Equity

Building a Structure that Leads with Equity

- Hired Chief Health Equity Officer to oversee a new Office of Health Equity
- 2021-2023 strategic plan goals designed to advance health equity and reduce health disparities
- Launched Division of Child and Family Well-Being to close equity gaps amongst children and youth

Leveraging Funding to Lead with Equity

- Extending funding for community- and faith-based organizations through Healthier Together
- Offering interpretation/translation services at COVID-19 vaccine events
- Investing in foundational data infrastructure and skills to measure health disparities

N95 Distribution in Omicron



New Statement: “If possible, wear a surgical or procedure mask, a KN95 or an N95 respirator”
Focus on rapidly distributing adult N95 masks to prioritized populations. ~13M available.

Population	Actions
LTC	<ul style="list-style-type: none">• Presented to Association, email to LTCs, and part of call campaign for SNF facilities to encourage requesting N95 masks for staff
FQHCs	<ul style="list-style-type: none">• Email to Association about mask requests alongside boosters, standing orders, etc.
Healthier Together	<ul style="list-style-type: none">• Email to all Healthier Together CBOs to request masks• New Healthier Together category added to request form so that these requests can be prioritized
Schools: Staff & teachers	<ul style="list-style-type: none">• Email schools with updated StrongSchools toolkit to encourage requesting N95 masks for staff
Child Care	<ul style="list-style-type: none">• DCDEE distributing ~200k adult N95 masks to all childcare facilities in state
Local DSSs and LHDs	<ul style="list-style-type: none">• Regional teams distributed masks to local DSS and LHDs across state proportional to population.• LHDs were asked to distribute to local jails.
Vendors	<ul style="list-style-type: none">• Testing & vaccine vendors will request N95s to distribute at testing and vaccine events
Special Pops	<ul style="list-style-type: none">• Email to migrant farmworker & homeless service providers with instructions on how to request N95 masks

Preserving Hospital Capacity

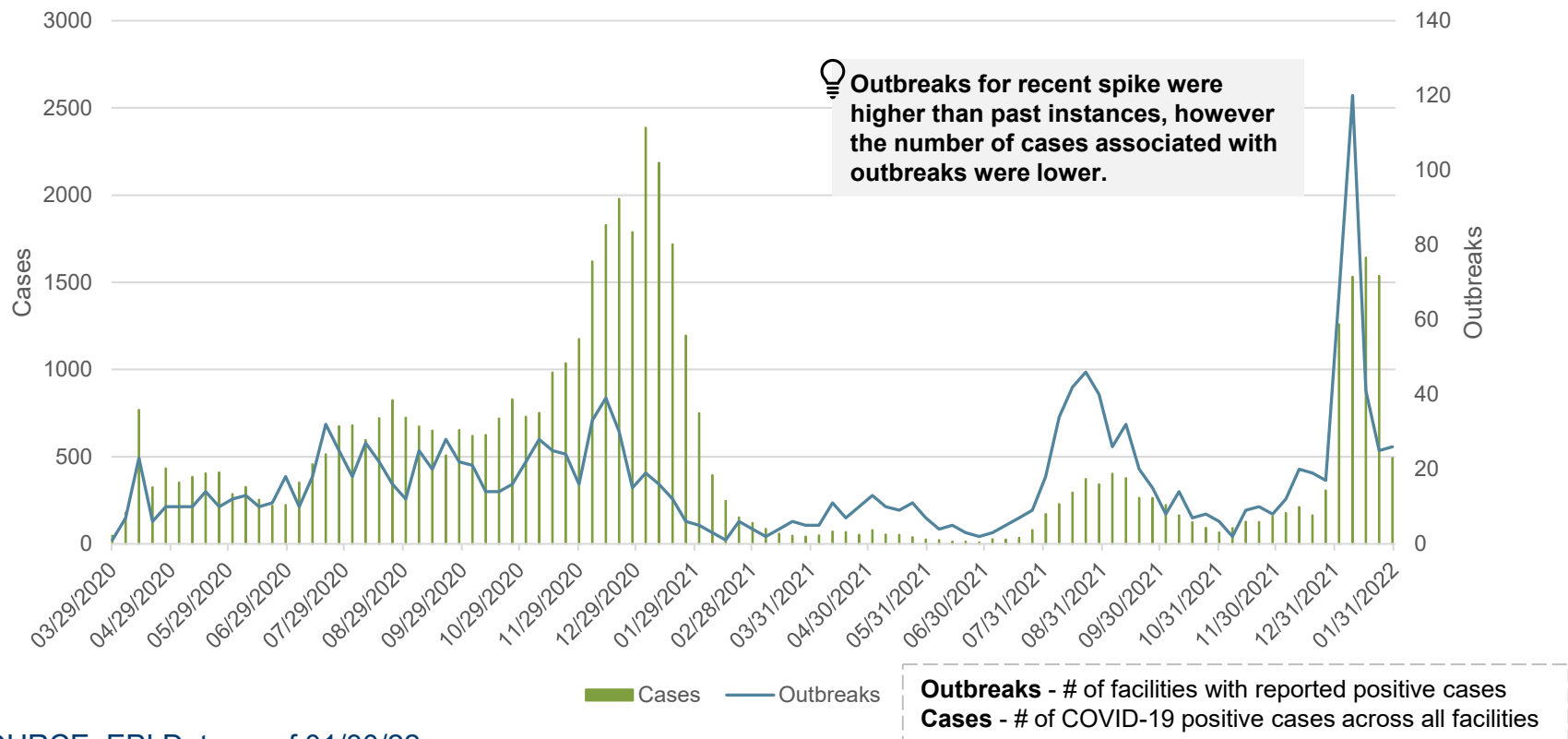
- **State of emergency and Executive Orders allow flexibilities around staffing**
- **Regulatory waivers allow expansion of bed capacity**
- **Patient Transfer Coordination process**
- **Hospitals utilized internal levers, e.g. canceling nonurgent procedures**
- **Federal support requested including a 16-person team for Atrium Health, 50 ambulances, and a surge testing site for Guilford**
- **Earlier in pandemic, FEMA support received for ambulances and vaccine administration**

COVID Strategy in LTC Facilities

Long Term Care Initiatives	Key Interventions (Required Resources)
Infection Prevention	<ul style="list-style-type: none">- 10 Infection Preventions teams conducted 1,612 site visits to date
Vaccines	<ul style="list-style-type: none">- Reached out to LTCFs to offer vaccination assistance and match with vaccine provider or work with state vendor.
PPE	<ul style="list-style-type: none">- Early in the pandemic, provided long term care facilities with PPE push packs
Staffing and Funding Support	<ul style="list-style-type: none">- Providing a temporary Medicaid rate increase of 10% for skilled nursing facilities, personal care assistance and home health services- Additional rate increase to providers who completed infection prevention self-assessment- SNF outbreak sites received increased reimbursement for enhanced costs of managing outbreak- Worked with ECU School of Nursing to identify staffing support for facilities

Case Rates in Nursing Facilities

Cases and Outbreaks Associated with Skilled Nursing Facilities



SOURCE: EPI Data as of 01/30/22

SNF Booster and Vaccine Rates Update

Overview of Primary Series & Booster vaccination rates recorded in Skilled Nursing Facilities for Residents and Staff.

Rates of Vaccination in SNF
(For residents & staff as of 1/16/2022)

Primary Series Vaccination
(% who have completed)

Booster Vaccination:
(% of who have received)

Residents		Staff	
Nationwide	NC	Nationwide	NC
87%	88%	83%	84%
65%	68%	31%	28%