



North Carolina State Bureau of Investigation

February 11, 2016

2015 Budget

- ▶ Fleet - \$1.9 million to purchase 75 vehicles a year
- ▶ Operation Medicine Drop - \$120,000 for the program that conducts events for citizens to bring unused or expired medications to a central location for safe disposal.
- ▶ Lottery Enforcement/ALE Contract - Transfer of \$2.1 million annually from the Lottery Commission to ALE for gambling enforcement activities



SBI Original Jurisdiction



- ▶ Hazardous waste dumping
- ▶ Communicating threats
- ▶ Arson (G.S. 58-79-5)
- ▶ Gambling and Lottery
- ▶ Drugs (G.S. 90-113.5)
- ▶ Lynchings
- ▶ Computer crimes against children
- ▶ Child sex abuse in daycares
- ▶ Riots
- ▶ Explosives

ALE Original Jurisdiction

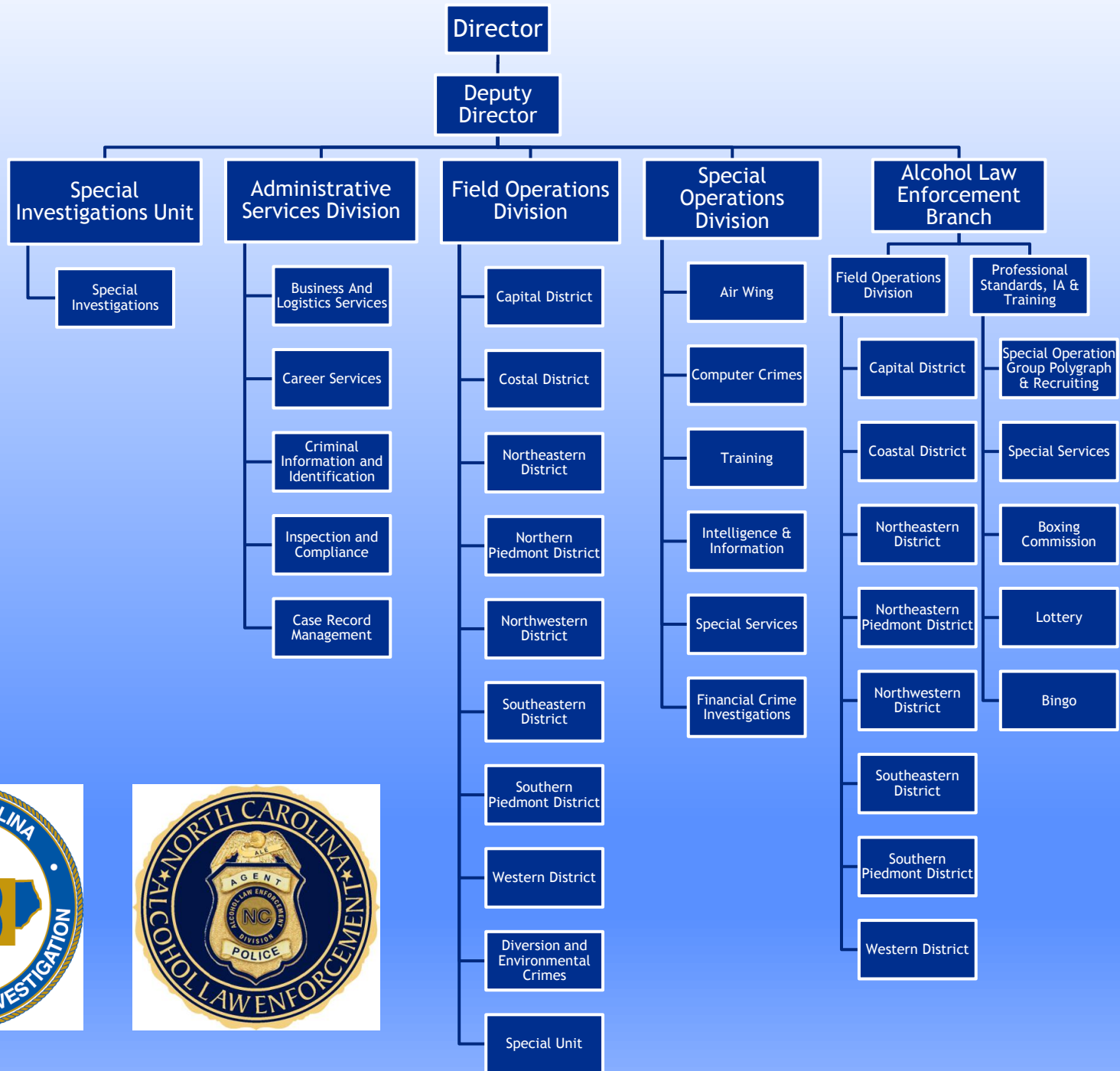


- ▶ Statewide jurisdiction over any criminal offense
- ▶ Primary responsibility is ABC and Lottery

Other SBI Jurisdiction

§ 143B-917. General powers and duties of Director and law enforcement officers of the State Bureau of Investigation.

The Director of the Bureau and other sworn law enforcement officers of the State Bureau of Investigation are given the same power of arrest as is now vested in the sheriffs of the several counties, and their jurisdiction shall be statewide. **The Director of the Bureau and other sworn law enforcement officers of the Bureau may give assistance to sheriffs, police officers, district attorneys, and judges when called upon by them and so directed....**



Is the SBI Prepared?

Yes, SBI and ALE Agents work around the clock training, investigating, and solving crimes to ensure the citizens of North Carolina are safe.

- ▶ **Field Operations**

- ▶ Agents are strategically assigned throughout the state to mitigate response times.

- ▶ **Specialized Operations**

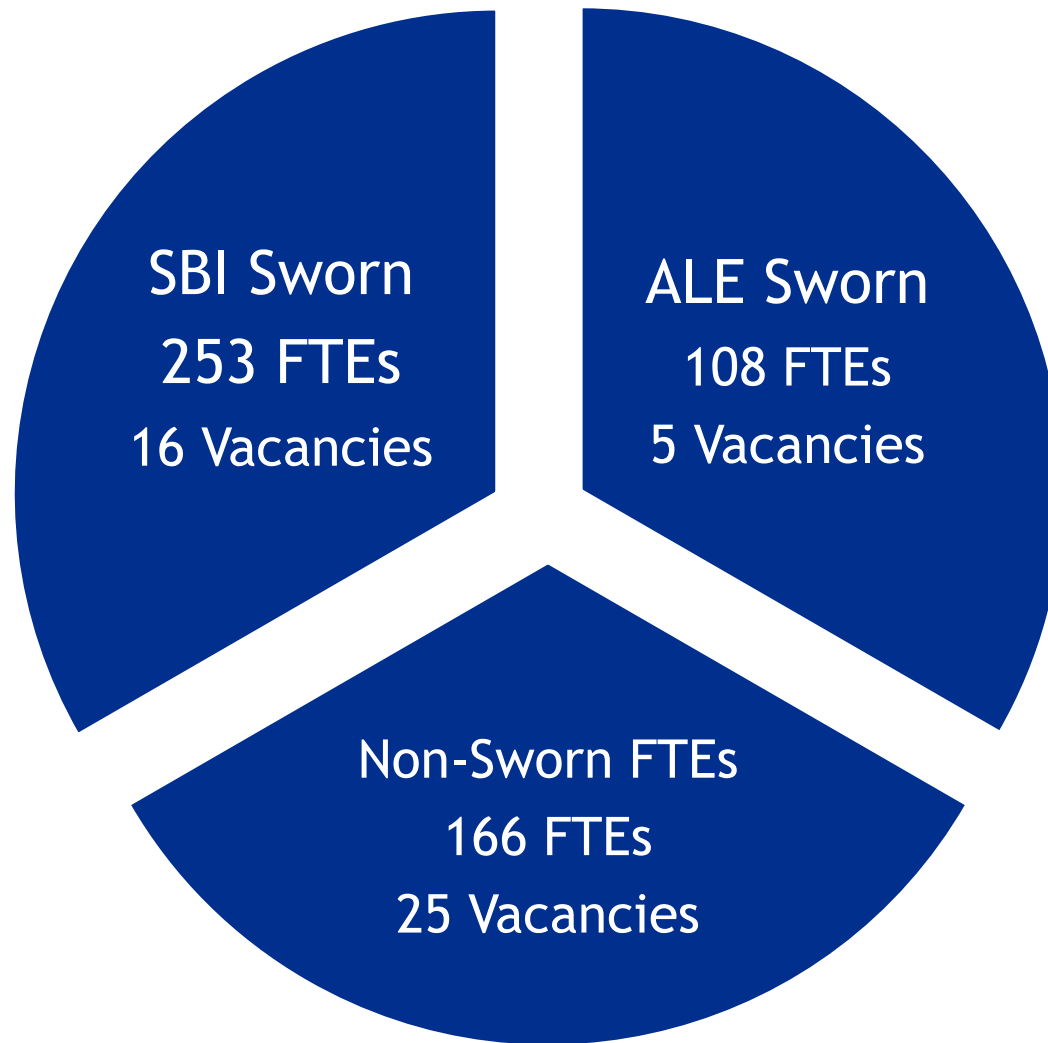
- ▶ Specialized Units: Computer Crimes, Financial Crimes, Intelligence, ISAAC, Bomb Squad, Special Response Team, Special Services and Training Section.

- ▶ **Training**

- ▶ Agents receive a minimum of 30 hours of specialized training annually.



Overview



Non-Sworn FTEs = Administrative Positions, Criminal Justice, Finger Print, Concealed Carry, and Sex Offender Register Analyst, Etc. (Most are receipt funded)

History of FTEs

SBI

- In 2010, the SBI had 319 sworn positions.
- Currently, the SBI has 253 sworn positions.
- SBI has the same number of agents as in 1985.
 - This reduction is due to transfers over time;
 - 52 SBI Agents were transferred to the State Crime Lab
 - 4 SBI Agents remained with the Department of Justice's Medicaid Fraud Unit
 - A total of 56 agents have been removed from the SBI due to these transitions.

ALE

- ALE has 108 sworn positions, 103 currently filled, 5 vacancies, 14 non-sworn currently positions, 12 filled, 2 vacancies
- ALE has Same sworn man power in 1992 for ABC Enforcement.

State Bureau of Investigation

Field Operations Division

- 8 District Offices
- Diversion and Environmental Crimes
- Special Unit
 - Arson/Fire
 - Crime Scene Search
 - Polygraph

SBI District

- 8 SBI Western District
- 7 SBI Northwestern District
- 6 SBI Southern Piedmont District
- 5 SBI Northern Piedmont District
- 4 SBI Capital District
- 3 SBI Southeastern District
- 2 SBI Northeastern District
- 1 SBI Coastal District



District offices

Field Agents provide assistance to local law enforcement by investigating;

- ▶ Homicides
- ▶ Drugs
- ▶ Violent Crimes
- ▶ Communicating Threats
- ▶ Arson
- ▶ Internet Crimes Against Children
- ▶ Frauds/Embezzlements
- ▶ Diversion and Environmental Crimes



State Bureau of Investigation

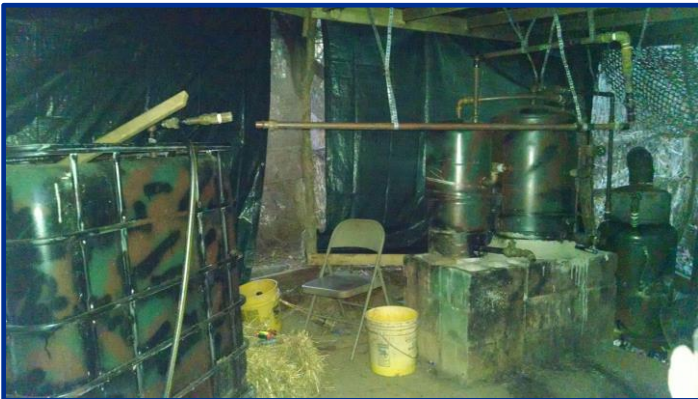
Special Operations Division

- Air Wing
- Computer Crimes
- Training
- Intelligence & Information
- Special Services
 - Clandestine Lab Response
 - Crises Negotiation
 - Fugitive Arrest and Apprehension
 - Special Response Team
 - Weapons of mass destruction/hazardous devices
- Financial Crime Investigations



Alcohol Law Enforcement

- ▶ ALE is the lead enforcement agency on;
 - ▶ State's Alcoholic Beverage Control
 - ▶ Lottery
 - ▶ Gambling
 - ▶ Boxing
 - ▶ Bingo
- ▶ ALE special agents target problem ABC-licensed and illegal establishments that serve as havens for violence, drugs, gang activity, organized crime, money laundering and other criminal activity.
- ▶ Assists local Police and Sheriffs departments in investigations with any crime when requested.



Training

- ▶ Legal Update
- ▶ Firearms
- ▶ Active Shooter
- ▶ Intelligence Update
- ▶ Leadership
- ▶ Investigative Techniques
- ▶ Human Trafficking
- ▶ Terrorism
- ▶ Financial Crimes
- ▶ HUMNIT
- ▶ Special Response Team



Critical Issue

Suspension of the Federal Asset Forfeiture Program



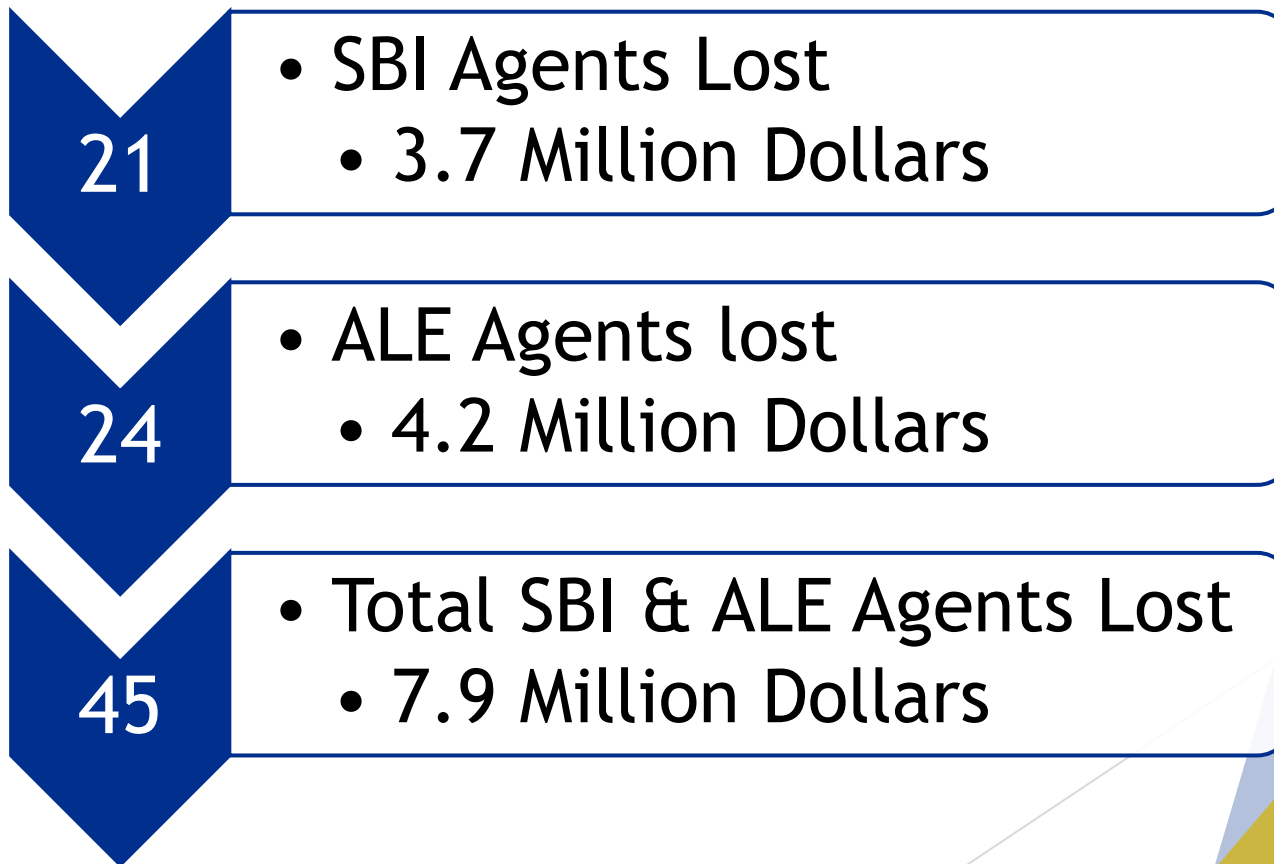
Critical Issues, Room for improvement

1. **Recruitment and Retention** - Agent Pay
2. **Outdated Equipment** - Aircraft
3. **Special Funds** - Undercover operating expenses

1. Recruitment and Retention

Agents Lost Since 2013

Voluntary Separations



2. Outdated Equipment

Current Aircraft - 1976 King Air

Aircraft Missions

- Federal, state & local law enforcement investigative assistance
- Violent criminal apprehension
- Fugitive extradition
- SRT operations
- Arson investigations
- Bomb squad deployment
- UC operations
- Drug investigations
- Disaster relief transport
- Evidence & Admin transport



Problems with Current Aircraft

- Engines will be reaching life limit - no longer supported
- Navigation systems no longer supported by manufacturer
- Major costly inspections & maintenance - increased downtime
- Limited mission capability/capacity
- Old technology
 - Engines - not fuel efficient
 - Flight Instruments and Communications Systems
 - Landing Gear/Hydraulics/Pneumatics/Electrical Systems

3. Special Funds - Undercover operating expenses

- These funds are utilized to pay investigative phone records, non-identifiable phone lines, undercover purchases, paying informants and any unanticipated purchases to support criminal investigations.
- During the transfer, the Bureau's Special funds were reduced from \$500,000 to \$350,000. This \$150,000 reduction has negatively impacted proactive investigative efforts.