

# NC State Crime Laboratory DNA on Arrest



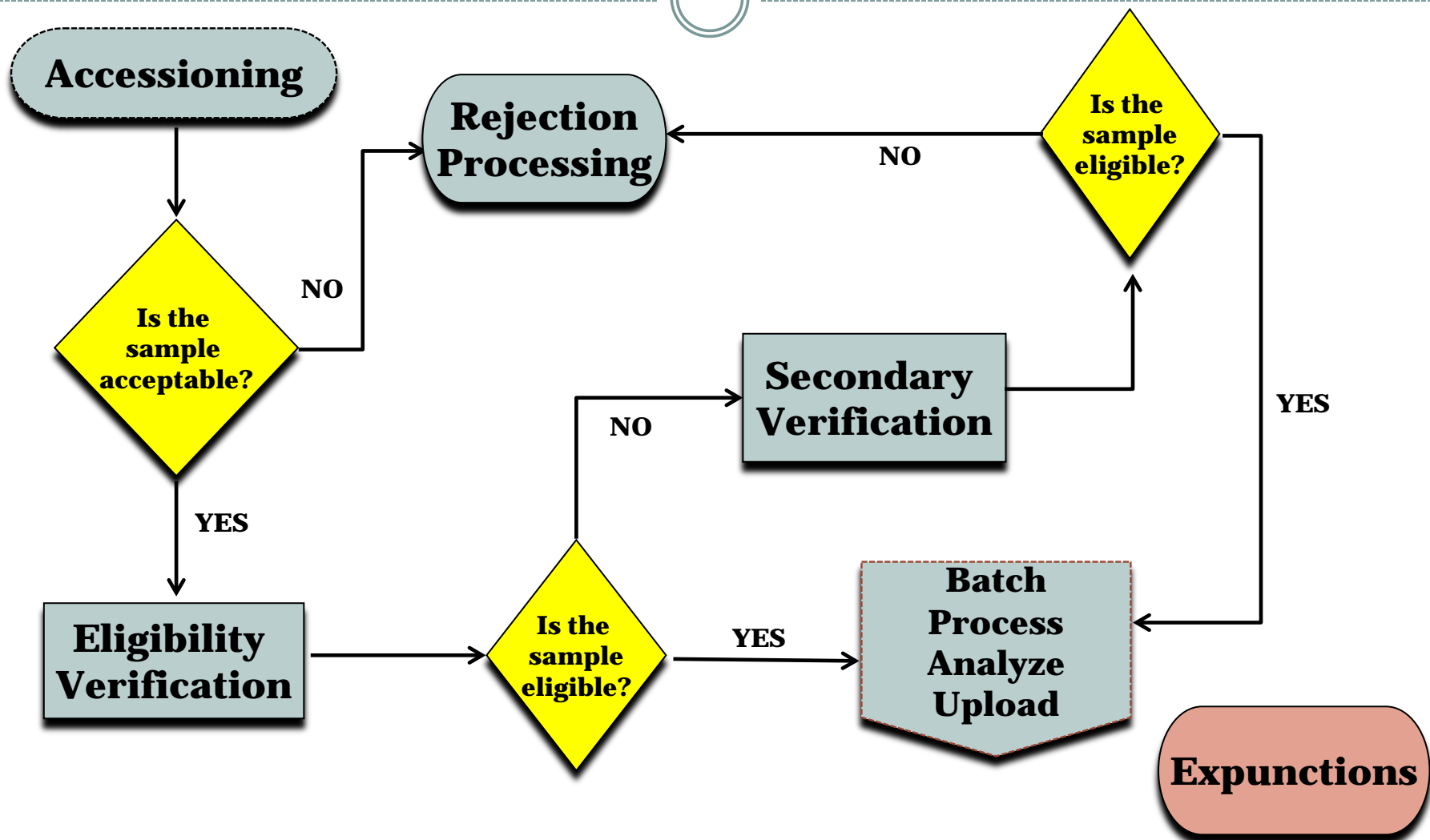
**A SNAPSHOT OF THE PROGRAM**

# History of Arrestee DNA Collection



- **February 1, 2011:** G.S. 15A-266.3A authorizes DNA collection for certain violent felony and misdemeanor offenses including homicides, sexual assaults and other violent crimes
- **December 1, 2015:** G.S. 15A-266.3A expands collection by adding thirty-five offenses to include all violent felonies
- **Arrestee processing within the DNA Database Section:**
  - Since February 1, 2011, **50,000** arrestee samples received
  - The section maintains ~800 arrestee work-in-process samples monthly with **no accumulated inventory**.

# DNA Database Process Map



# DNA Database Sample Processing



- After analysis and 100% technical review, the samples are uploaded to CODIS.
- A bi-weekly search is performed of CODIS. A “**hit**” occurs when an unknown DNA profile within the CODIS Database matches an offender or arrestee.
- All hits are confirmed by a Forensic Scientist following a four step process.
  - Analysis
  - Review
  - Confirmation
  - Notification

# Expunction Processing



- **50,000** arrestee samples **received** to date
- **32,000** arrestee profiles **uploaded** to CODIS
- Remaining samples were **not uploaded** due to **duplication, ineligibility and/or improper collection.**
  
- **> 12,000** expunction requests received by the DNA Database Section of the Crime Lab:
  - 3,200 approved (26.7%)
  - 1,813 denied (15%)
  - ~7,000 were duplicate requests or “no-specimens” (58.3%)

# CODIS Hits



## Trends from 2012-2015

	2015	2014	2013	2012
CODIS Hits	414	273	274	199
Forensic Samples Uploaded	1,219	625	285	195
Convicted Offender Samples Uploaded	12,786	10,016	**21,795	9,031
Arrestee Samples Uploaded	7,200	6,983	**9,183	3,153

\*\* Numbers uploaded for 2013 were significantly higher due to the elimination of pending samples in that calendar year.

# DNA Database Historical & Current Costs Per Sample Processed



	FY 2014/2015 Actual Costs	2015 General Assembly Approved Expansion Funding
A. Total Costs	\$2,143,317	\$373,150
B. DNA Samples	24,668	4,308
C. Cost Per Sample (=A/B)	\$86.89	\$86.62
D. Full Time Staff	19.00	4.00

When using a unit cost basis to compare new DNA on Arrest expansion funding compared to historical cost patterns, there is no material difference in these costs.

For the past 24 months, unit costs to process DNA database samples have varied from \$84 to \$87 per DNA sample submitted.

# SCL DNA Database Budget Summary



Line	Description	FY 2014/2015 Actual Costs		2015 General Assembly Approved Expansion Funding		FY2016/2017 Combined Budget	
			%		%		%
1	<b><u>Expenditures:</u></b>						
2	Personnel	\$1,285,285	60%	\$217,560	58%	\$1,502,845	60%
	Scientific Supplies (Local agency blank kits + SCL analysis supplies)						
3		\$338,167	16%	\$120,624	32%	\$811,328	32%
4	Private Lab Outsourcing Charges	\$330,614	15%	\$0	0%	\$0	0%
5	Scientific Equipment	\$137,031	6%	\$22,166	6%	\$122,166	5%
	Other (equipment calibration, scientist training..)						
6		\$52,221	2%	\$12,800	3%	\$80,128	3%
7	<b>Expenditure Totals</b>	<b>\$2,143,317</b>		<b>\$373,150</b>		<b>\$2,516,467</b>	
8							
9	<b><u>Receipts &amp; Funding Sources:</u></b>						
	Court Fees (\$2.00 DNA on Arrest Fee)						
10		\$434,014	20%	\$0	0%	\$434,014	17%
	Court Fees (\$600 SCL Report Fee)						
11		\$223,255	10%	\$0	0%	\$223,255	9%
12	DNA Backlog Grants	\$452,914	21%	\$0	0%	\$452,914	18%
13	<u>State Appropriations</u>	<u>\$1,033,134</u>	<u>48%</u>	<u>\$373,150</u>	<u>100%</u>	<u>\$1,406,284</u>	<u>56%</u>
14	<b>Receipt Subtotals</b>	<b>\$2,143,317</b>		<b>\$373,150</b>		<b>\$2,516,467</b>	
15							
16	FULL TIME STAFF	19.00		4.00		23.00	