

Gangs in North Carolina

WHY CHILDREN ARE ATTRACTED TO GANGS, SUCCESSFUL STRATEGIES AND RECOMMENDATIONS

MICHELLE GUARINO, CHAPEL HILL POLICE DEPARTMENT

3/10/2016

Why do some youth choose gangs?

Youth join gangs to meet the same developmental needs all children and youth seek;

1. SENSE OF CONNECTION
2. BELONGING
3. SELF DEFINITION

Reasons children and youth join gangs

❖ PEER PRESSURE

❖ LOVE

❖ FEAR

❖ CURIOSITY / BOREDOM

❖ POWER

What does gang membership provide ?

- PEER FRIENDSHIP
- PRIDE
- IDENTITY OUTSIDE OF FAMILY
- A FAMILY / LOVE
- INCREASED SELF ESTEEM
- ACCEPTANCE
- STATUS
- ACQUISITION OF RESOURCES
- EXCITEMENT
- DISCIPLINE

Violence

VICTIMS OF VIOLENT TRAUMA

Young Age
Minority race
Male gender
Low income
Low education
Substance abuse

GANG MEMBERS

Young Age
Minority race
Male gender
Low income
Low education
Substance abuse

Prevention, Intervention & Diversion

THE HISTORY OF GANG SPECIFIC PROGRAMMING IN NORTH
CAROLINA AND SUCCESSFUL TECHNIQUES

❖ Clinical Social Work meets Law Enforcement

❖ Youth Violence Intervention Program

❖ Program ELEMENTS

❖ Gang Of One





The necessities

- ❖ Jurisdictional, regional and statewide support
- ❖ Acknowledgement of this issue
- ❖ Consistency and Accountability
- ❖ Commitment
- ❖ Collaboration

Next Steps

RECOMMENDATIONS

Recommendation 1 – Statewide Approach

- ❖ **Identify a Gang Resource Coordinator (GRC)** at the county or regional level, if needed, to engage in placement of individuals within effective intervention programs. The GRC will engage in a holistic approach to intervention advocating for social, natural and financial support for their designated community. The GRC program will be a North Carolina program with a Director and Regional Managers; Western, Eastern and Piedmont. A statewide approach will ensure consistency across systems and counties, as well as, accountability to a larger group for problem solving, advocacy and accountability.
- ❖ **Implement a comprehensive intervention program** at the neighborhood and/or community level, in each county or region, that emphasizes involvement of at risk and/or gang involved individuals and their families. This program should focus on individualized needs and/or interests including academic, mental health, therapeutic, vocational, artistic and recreational options.

Statewide Approach

- ❖ **Establish a strategic planning and evaluation process** for intervention programming in order to ensure effective programming, measurable outcomes, proper evaluation of goals and objectives. Ensure those communities that receive grant funding and create successful programs, will be sustained by their municipality, county or organization.
- ❖ **Use existing successful programming templates** to replicate in North Carolina communities, or as a starting point.

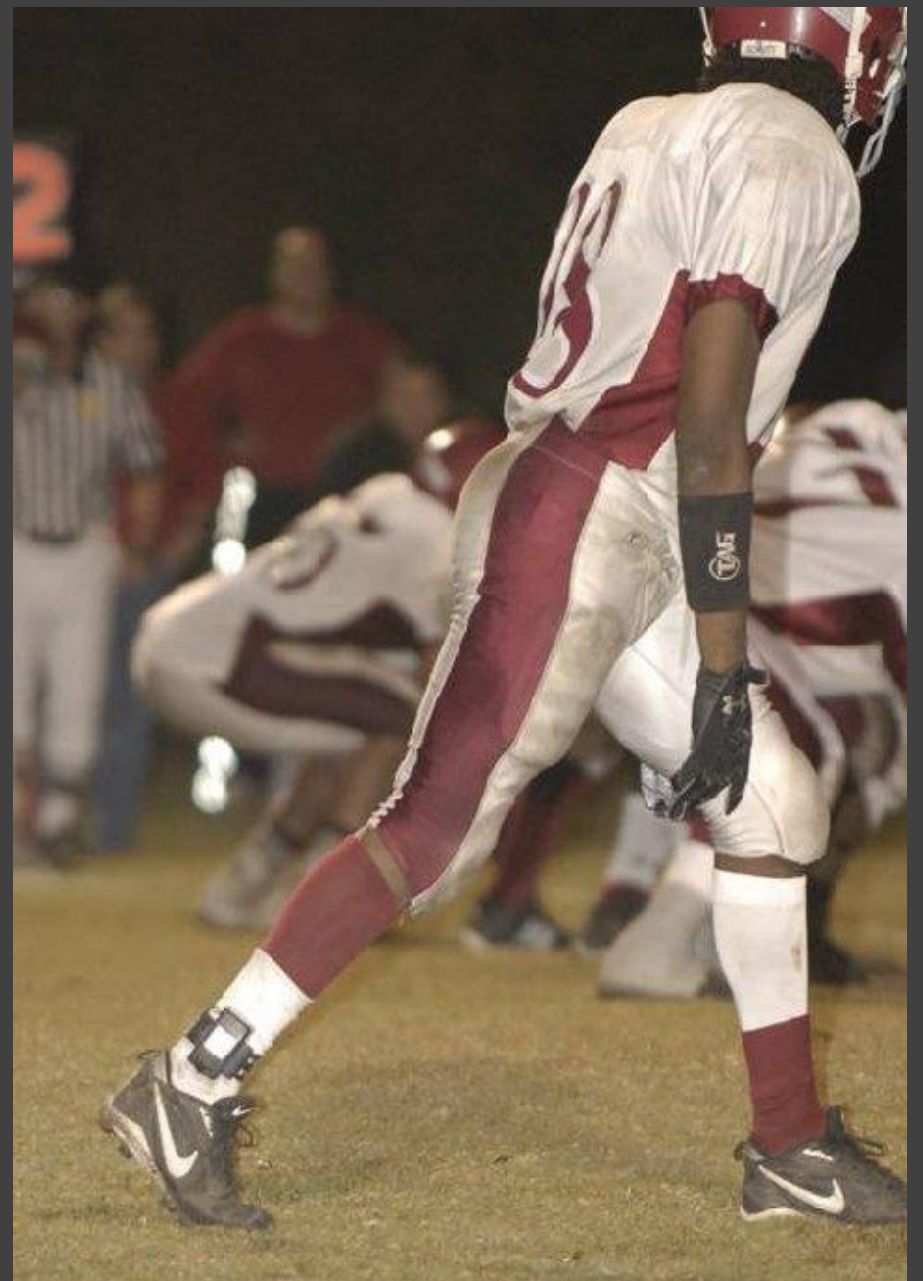
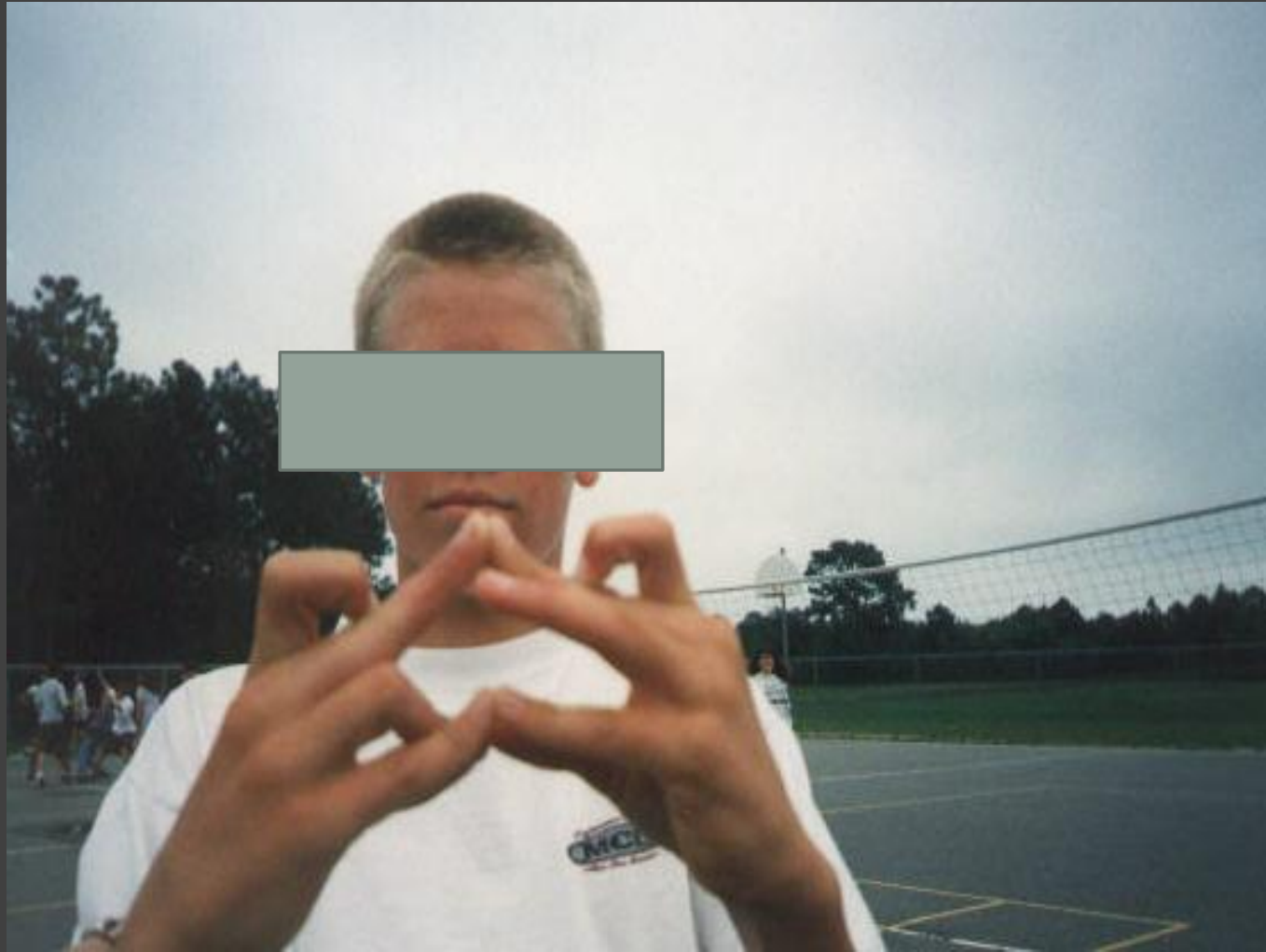
Recommendation 2 – Communities

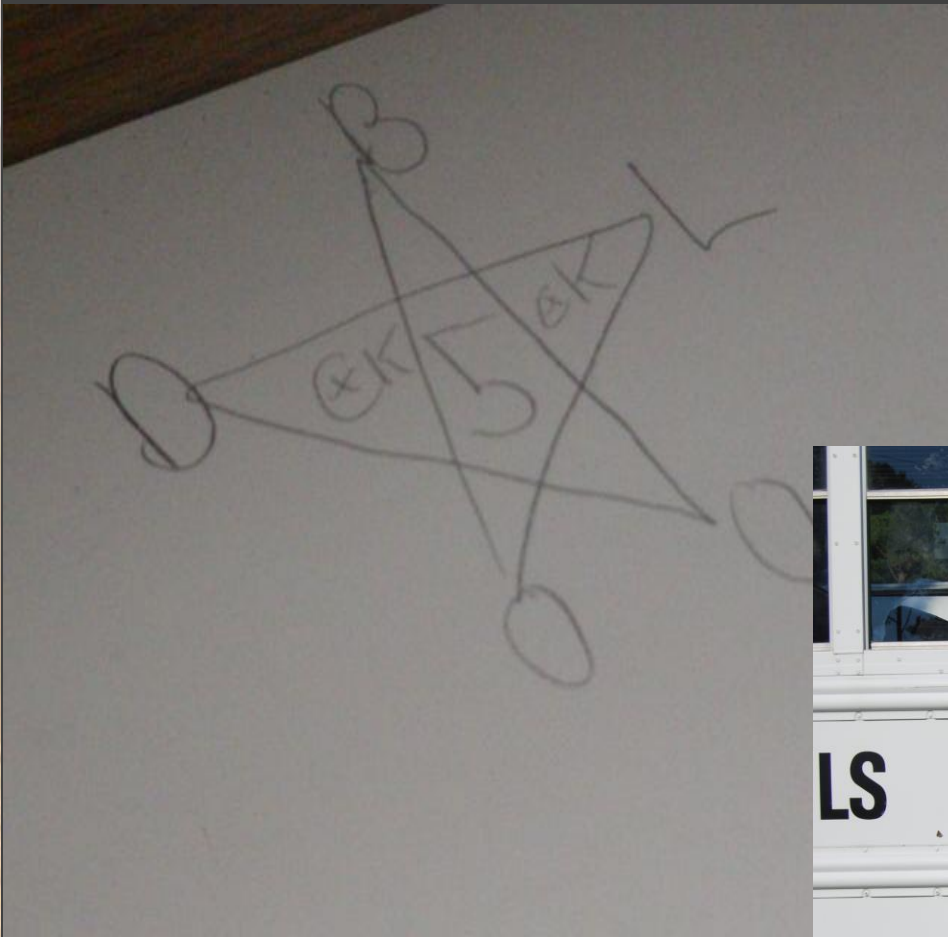
- ❖ **Provide training** to community citizens, stakeholders, parents, etc. through Gang Free NC. Training must include Gang awareness, Identification, Psychology, Effective Communication and Prevention/Intervention Strategies.
- ❖ **All North Carolina counties to conduct a gang assessment** for their community. An assessment should be completed initially and every 5 years afterwards.
- ❖ **A community inventory** should be completed to identify gaps and opportunities in each community. This assessment, combined with the gang assessment, gives a thorough and detailed look at the existing problem, level of the problem and means to intervene.



Recommendation 3 – Schools

- ❖ **Provide gang awareness** and intervention education to the employees of the North Carolina Department of Public Instruction, local school staff to include; teachers, counselors and administrators, as well as, the school board of all North Carolina schools systems. Develop a train the trainer program in partnership with North Carolina Gang Investigators Association and Gang Free NC to be the conduit of information back to each of the school systems of North Carolina.
- ❖ **Adopt and implement a state-wide school policy** that addresses gang behaviors displayed within the school and the appropriate course of action thereafter to ensure consistent prevention, intervention, diversion and suppression efforts within the North Carolina school system as a whole.
- ❖ **Implement and support alternatives to high school education** that will focus on technical skills and support and enhance current effective employment programs.





Thank You

YOUR TIME AND ATTENTION ARE MUCH APPRECIATED