



NORTH CAROLINA

Department of Transportation



Division 12 Overview

Mark Stafford, PE
Division 12 Engineer

December 7, 2017

Outline

- Introduction
- Division 12 Overview
- Maintenance Operations
- Project Development
- Summary: Keys to Success



Division 12



Division 12 Counties
 Alexander, Catawba, Cleveland,
 Gaston, Iredell, Lincoln

Division 12 Overview



Road Miles – 6,116
(12,763 lane miles)

Annual vehicle miles
traveled in Division:
8,339,000,000

Bridges - 949

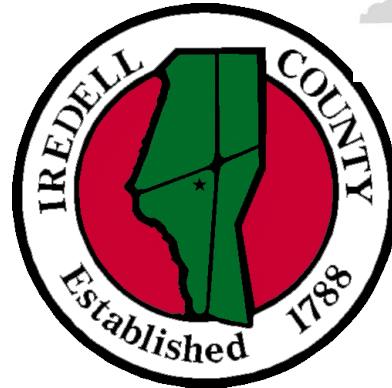
Airports - 5

Railways - 5

Interstates - 3

Traffic Signals - 850

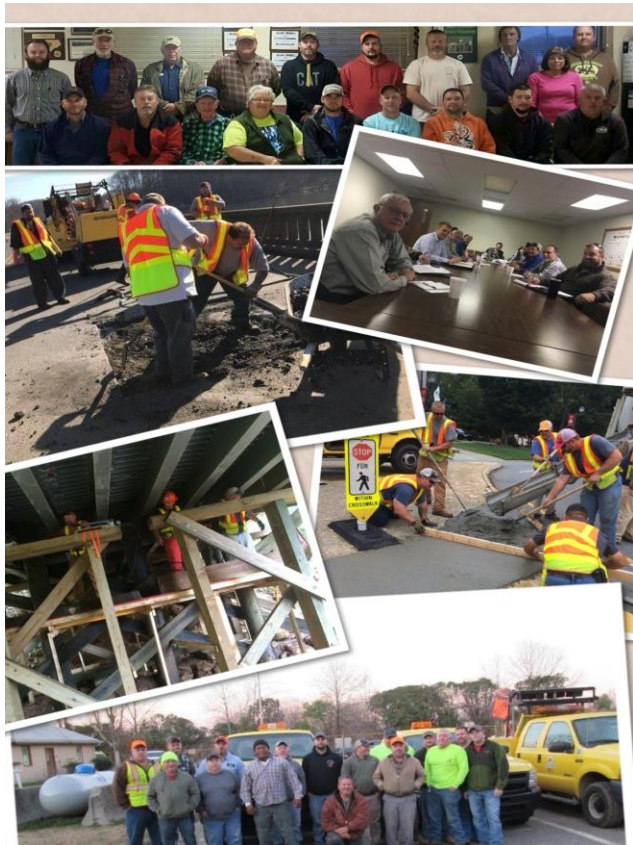
Population – 742,464





Maintenance Operations

- Positions: 479
- Number of Employees 382



Maintenance Operations



Challenges

Solutions



Challenges

Solutions



Division Challenge -Maintenance Operations

Secondary Construction

Division 12 Unpaved Mileage: 175 miles

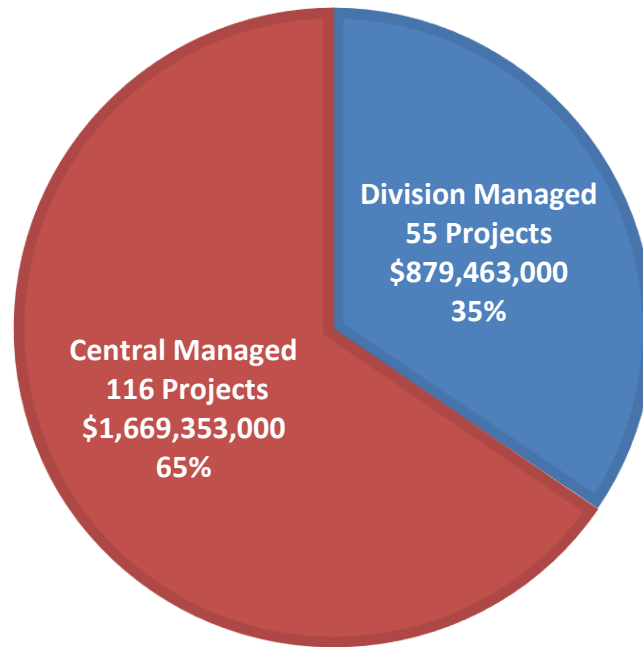
Estimated cost to Grade and Pave: \$79,000,000



Division Challenge - Program Delivery

2018-2027 STIP

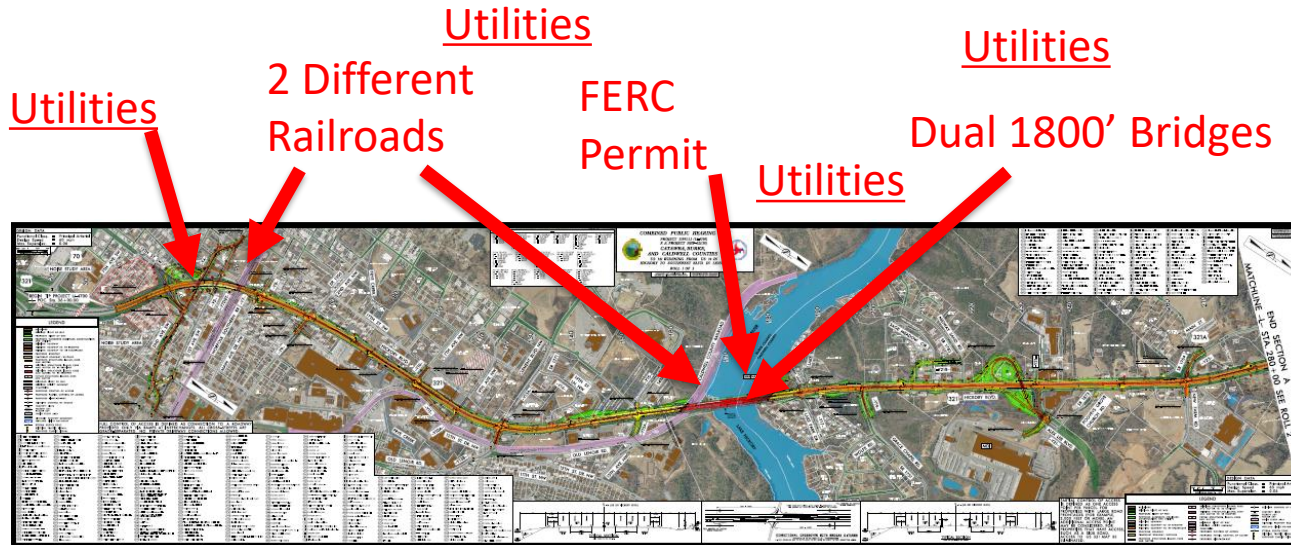
■ Division Managed Projects ■ Central Managed Projects



Division Staff assigned to Project Delivery: 13

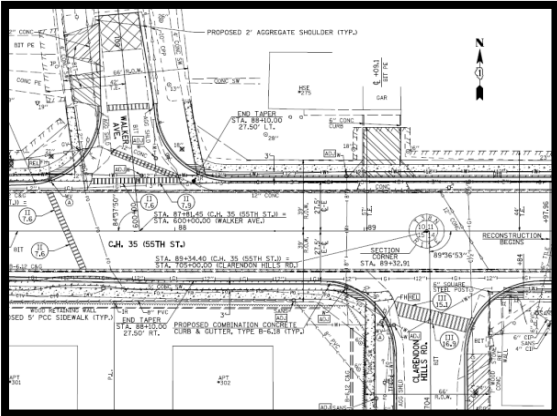
Consultant Firms contracted to Projects: 19

Current Division Managed Project



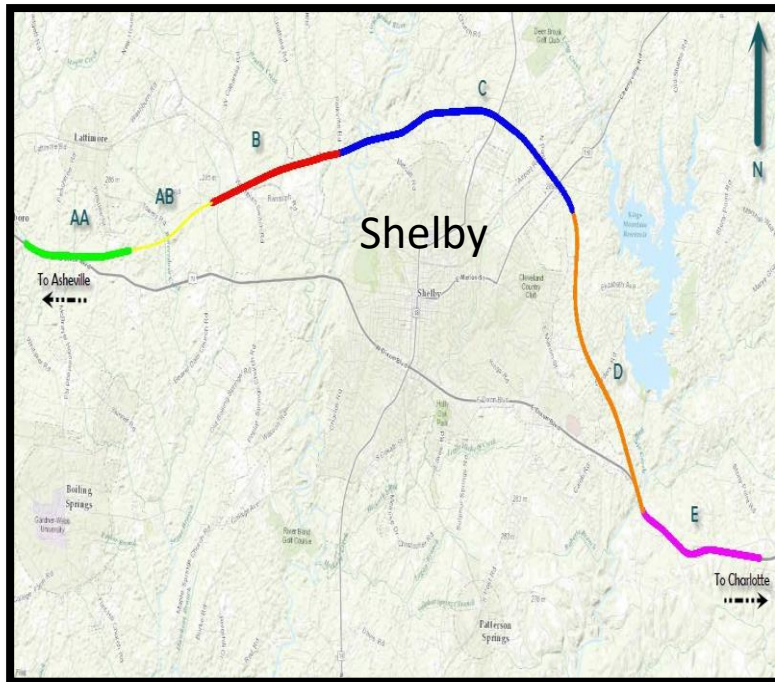
- U-4700A (US 321) in Catawba, Burke, and Caldwell
- 4.7 miles - 4 to 6 Lane Urban Widening
- \$165M
- Public Involvement

Program Delivery Challenges





74
U.S. 74 BYPASS
(SHELBY BYPASS)
CLEVELAND COUNTY



- R-2707- 18.5 miles of 4 lane Freeway
- Total Cost \$381,230,000
- AA Turnkey and Complete
- AB and B Grading and Structures only
- AB and B Paving to let Jan. 2018
- C is currently under Construction



Program Delivery - Upcoming Projects

Sections D and E funded in P4.0 and now in the STIP.

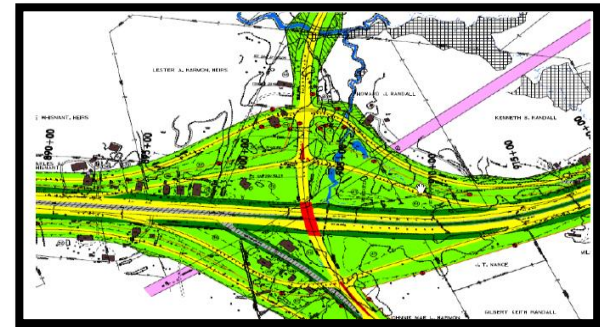
ROW 2019

Construction June 2021

D and E Cost: \$101,000,000

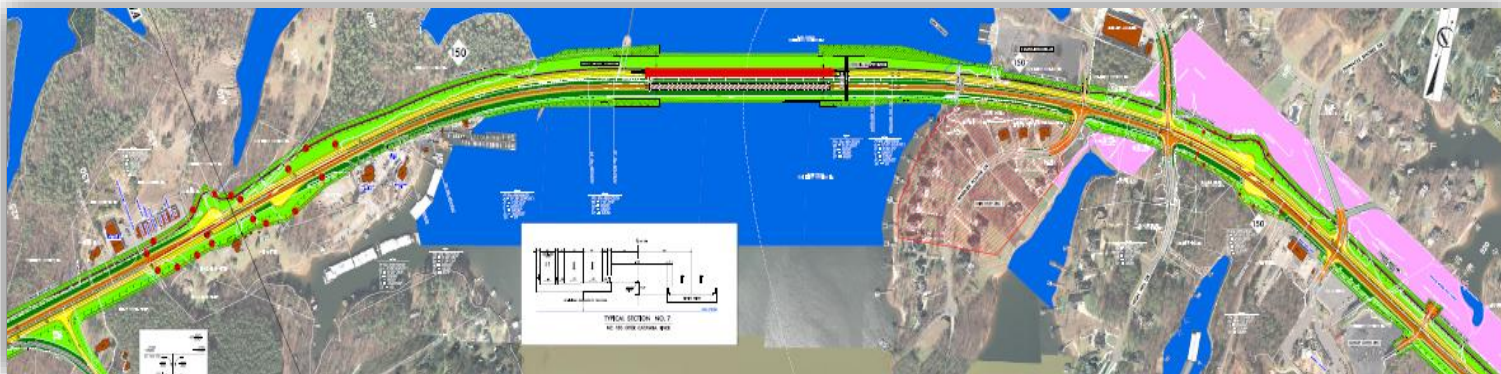
Proposed interchange near Transmission lines.

Team identified challenge early and identified Innovative Alternate Design



Program Delivery - Upcoming Project

- R-2307B Widen NC 150 to Multi Lanes



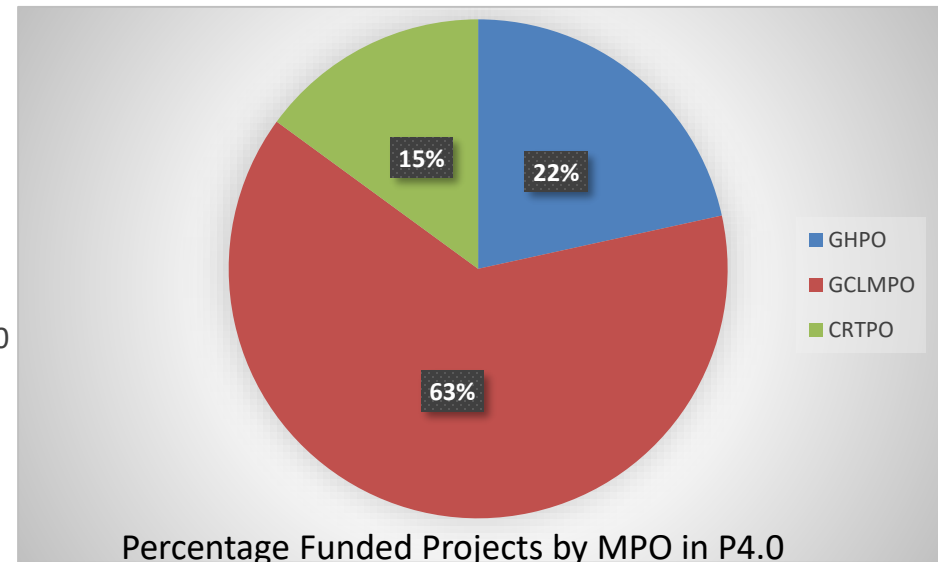
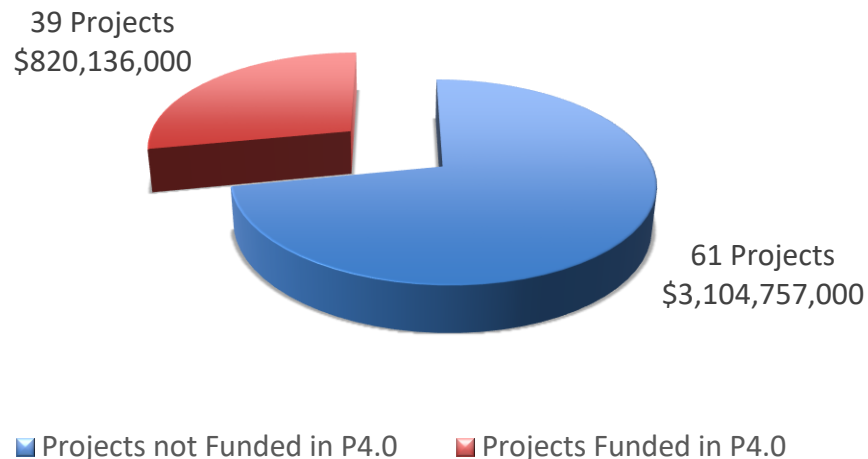
- Length: 6.94 miles from Harvel Rd to US 21
- Construction Estimate: \$106,800,000
- R/W Estimate: \$21,185,884
- Construction Let Date: August 2019



Local Government Collaboration

- Only MPO's for D12
 - CRTPO, GCLMPO, Greater Hickory MPO.
- What does that mean? A lot of Urban and a lot of Rural.
- Most Counties are Tier 2
- Strengthening Partnerships: Quarterly Meetings with Local Jurisdictions
- Upcoming Additional Resource: Corridor Planning Engineer

Prioritization



Division Challenge – Workforce



Needs:

- Qualified Construction Inspection personnel
- Adequate NCDOT maintenance staff, and staff to manage and inspect projects and consultants
- Comprehensive Classification and Compensation Program:
 - Multiple systems in place
 - Compensation based on market data
 - New program that is straight forward and understandable to employees
 - Assists employees with career development and progression

Summary – Keys to Success

- Maintenance and Operations
 - Maintenance Funding
 - Secondary Construction

- Project Development
 - Delivering the program
 - Enhancing partnerships

- Human Relations
 - Classification
 - Pay
 - Hiring Process
 - Retention

“We do a lot of good, however we have a lot left to do.”

- Questions?

