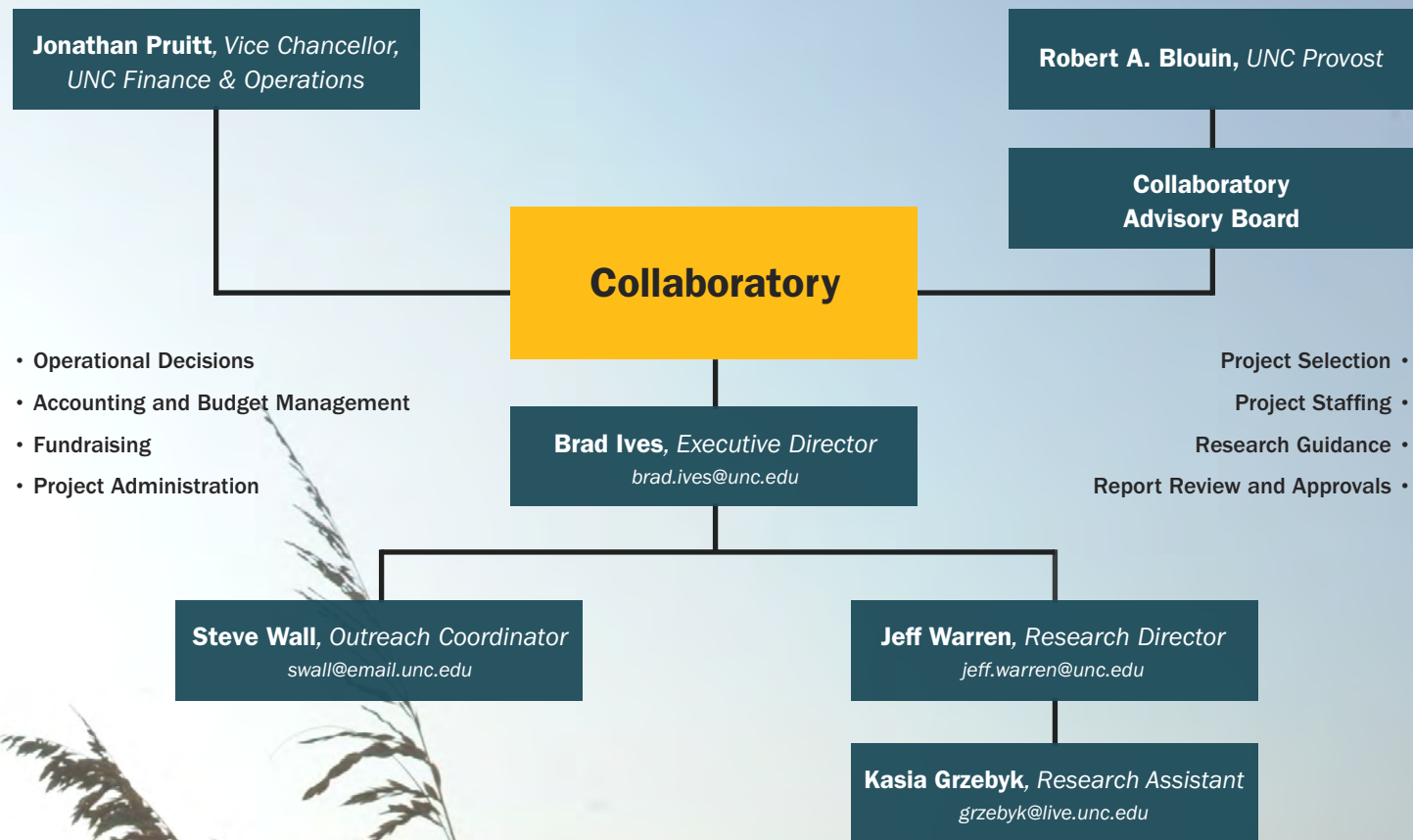


Who We Are



Advisory Board

Al Segars, Chair

PNC Distinguished Professor, Strategy and Entrepreneurship, UNC Kenan-Flagler Business School; Faculty Director, Center for Sustainable Enterprise

Anita Brown Graham

Professor of Public Law and Government, UNC School of Government

Jaye Cable

Professor, Marine Sciences; Chair, Curriculum in Environment and Ecology at UNC

Greg Characklis

Professor, Environmental Sciences & Engineering; Director, Center on Financial Risk in Environmental Systems, UNC Institute for the Environment

Don Hobart

UNC Associate Vice Chancellor for Research

Reggie Holley

Principal, the Longmire Group and Chair, UNC Institute for the Environment Board of Visitors

Jeff Hughes

Lecturer and Director, Environmental Finance Center, UNC School of Government

Mark Little

Executive Director, the Frank Hawkins Kenan Institute of Private Enterprise

Rick Luettich

Professor and Director, UNC Institute of Marine Sciences

Brad Ives, Ex-Officio Member

UNC Chief Sustainability Officer and Collaboratory Director



Policy
Collaboratory

400 Roberson Street, Carrboro, 27510 • collaboratory.unc.edu • Twitter: @NCCollaboratory



Policy
Collaboratory

2018 Research Summary

The NC Policy Collaboratory was established in the summer of 2016 by the North Carolina General Assembly for the purpose of disseminating the policy and research expertise of the University of North Carolina System for practical use by state and local government.

The Collaboratory is a unique, first-of-its-kind model that provides the necessary link between science and policy.

The Collaboratory focuses on projects across the State to better understand the environmental and economic components associated with managing North Carolina's vast natural resources. From wildfire mitigation in the mountains to oyster restoration along the coast, these projects seek to explore new technologies and concepts for improving the environment, economy and people of North Carolina.

The Collaboratory has been directed to develop and disseminate relevant best practices to interested parties, lead and participate in projects across the State related to natural resources management and is authorized to make policy recommendations directly to the General Assembly.

A collaboratory is a laboratory without walls in which faculty, staff and students can perform their research without regard to physical location. This helps facilitate collaborative interaction across the UNC System, providing greater access to expert personnel, analytical instrumentation, data and computational resources.

Where We Are

Collaboratory research depicted represents more than \$4M in research funding.

Research budget totals from FY 16-17 projected through FY 18-19 include direct funding by the NCGA, external fundraising and utilization of NCGA challenge grant.

