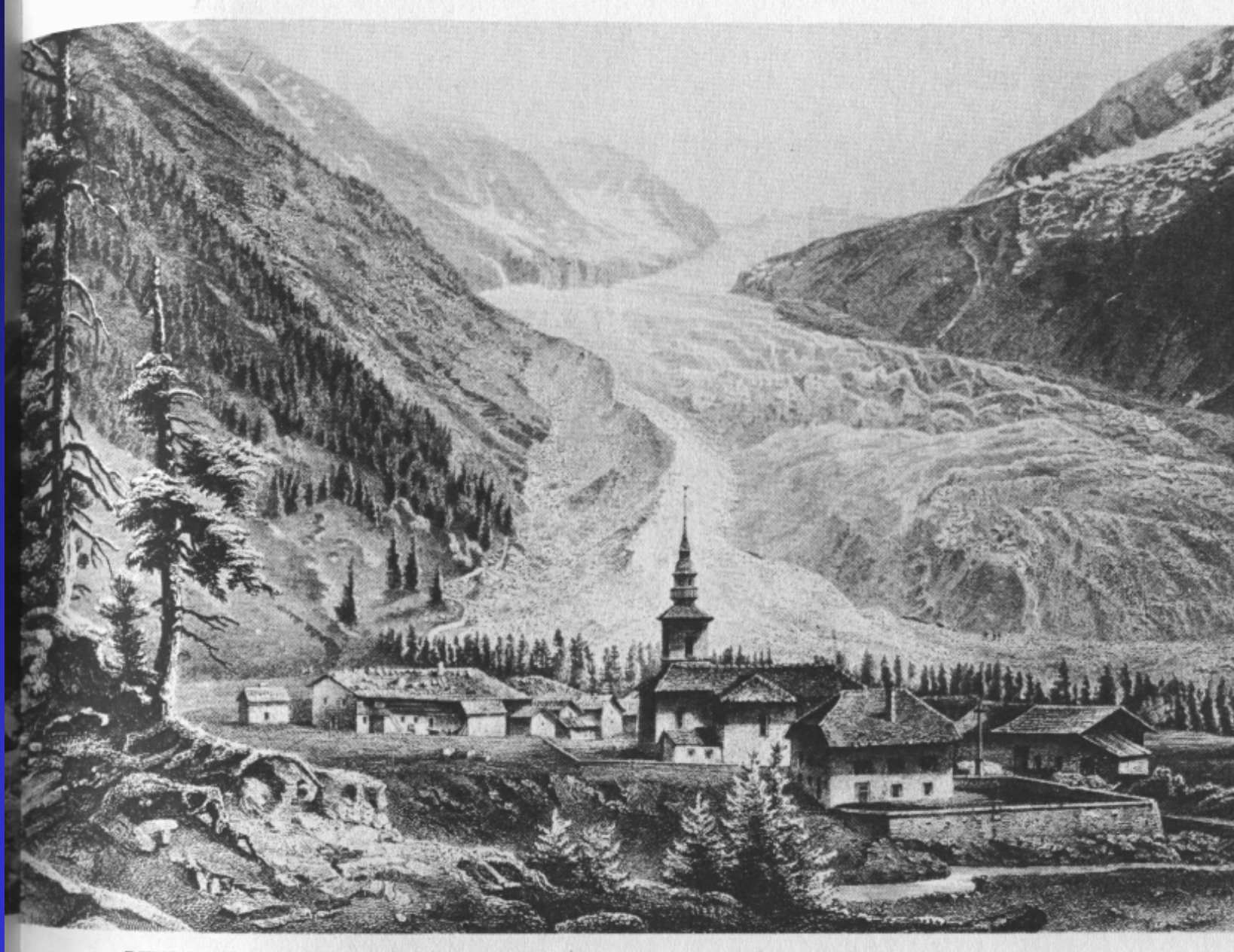


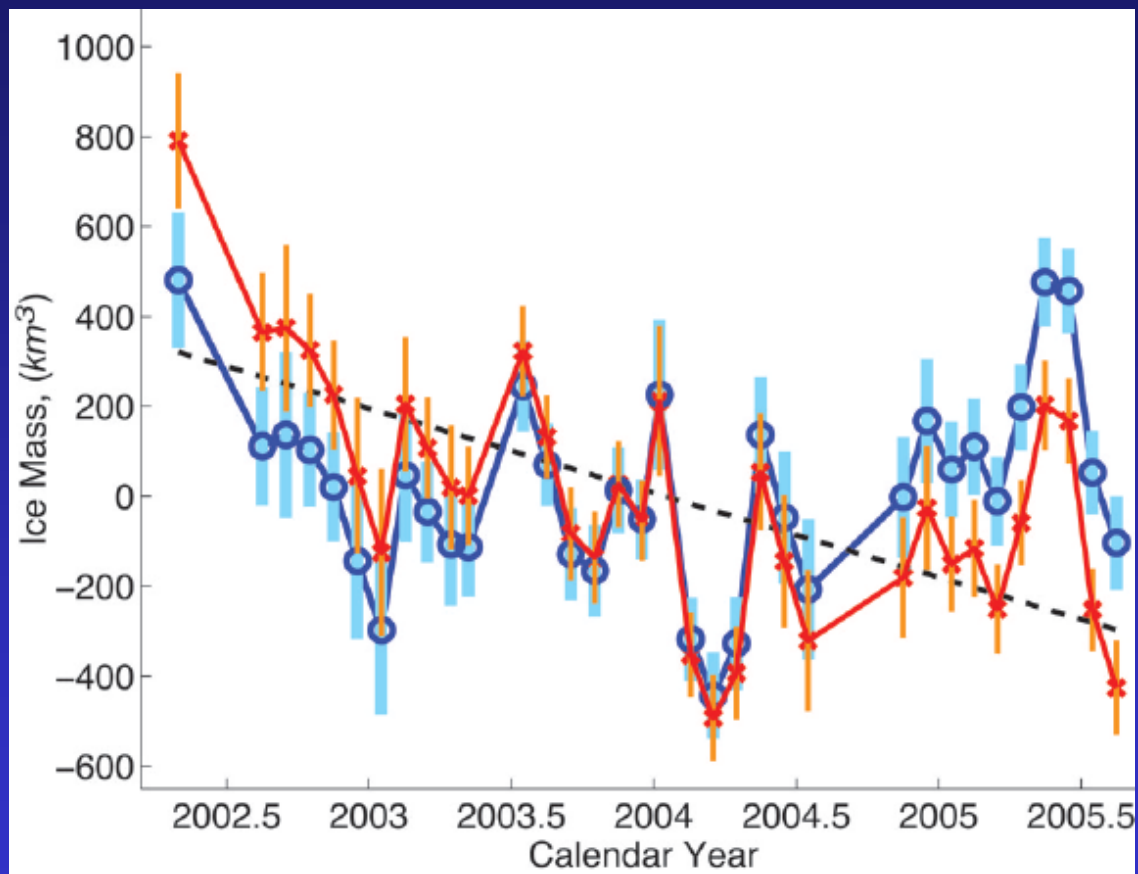


# Argentiere Glacier - 1966

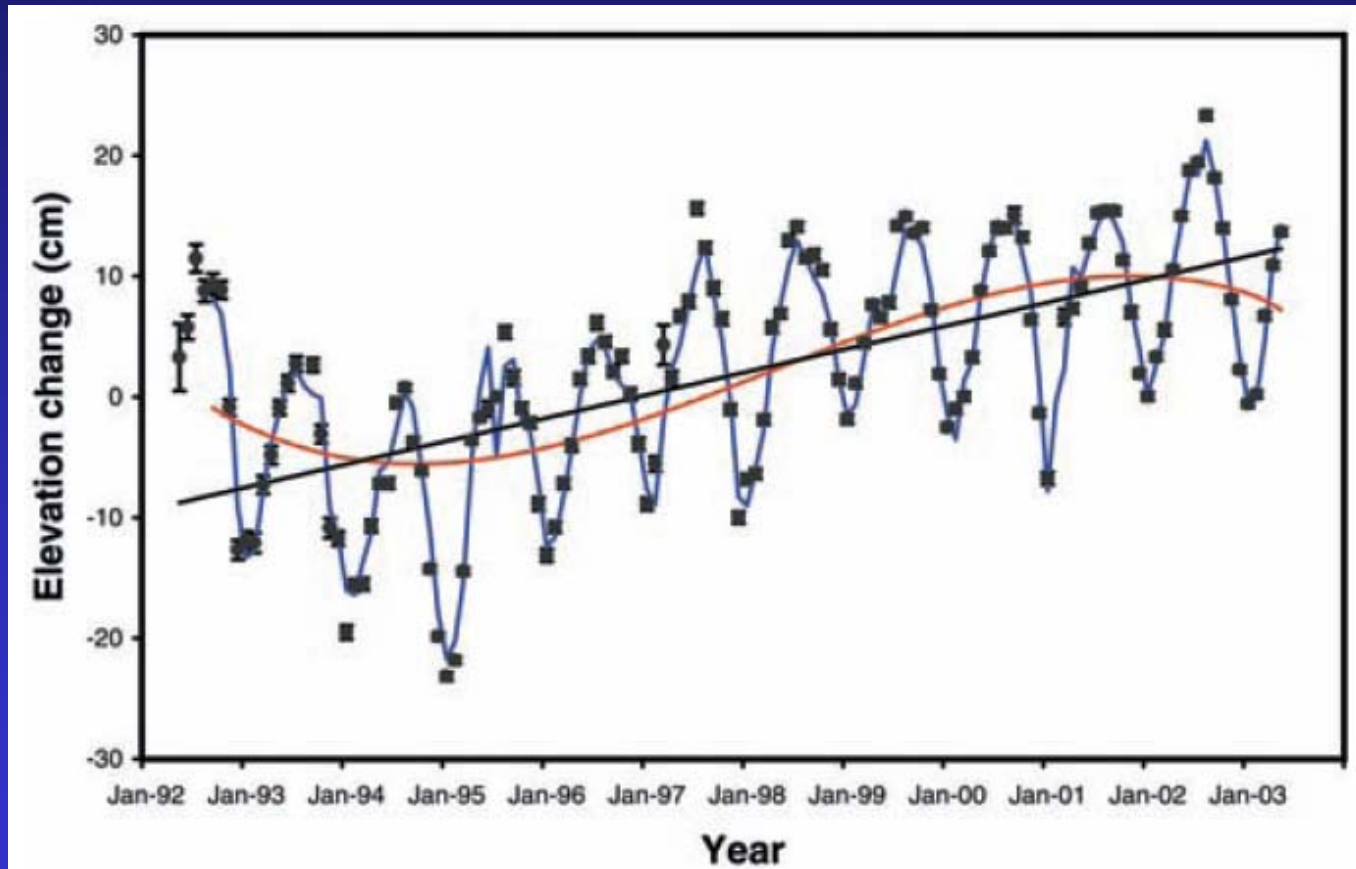


# Argentiere Glacier - 1850

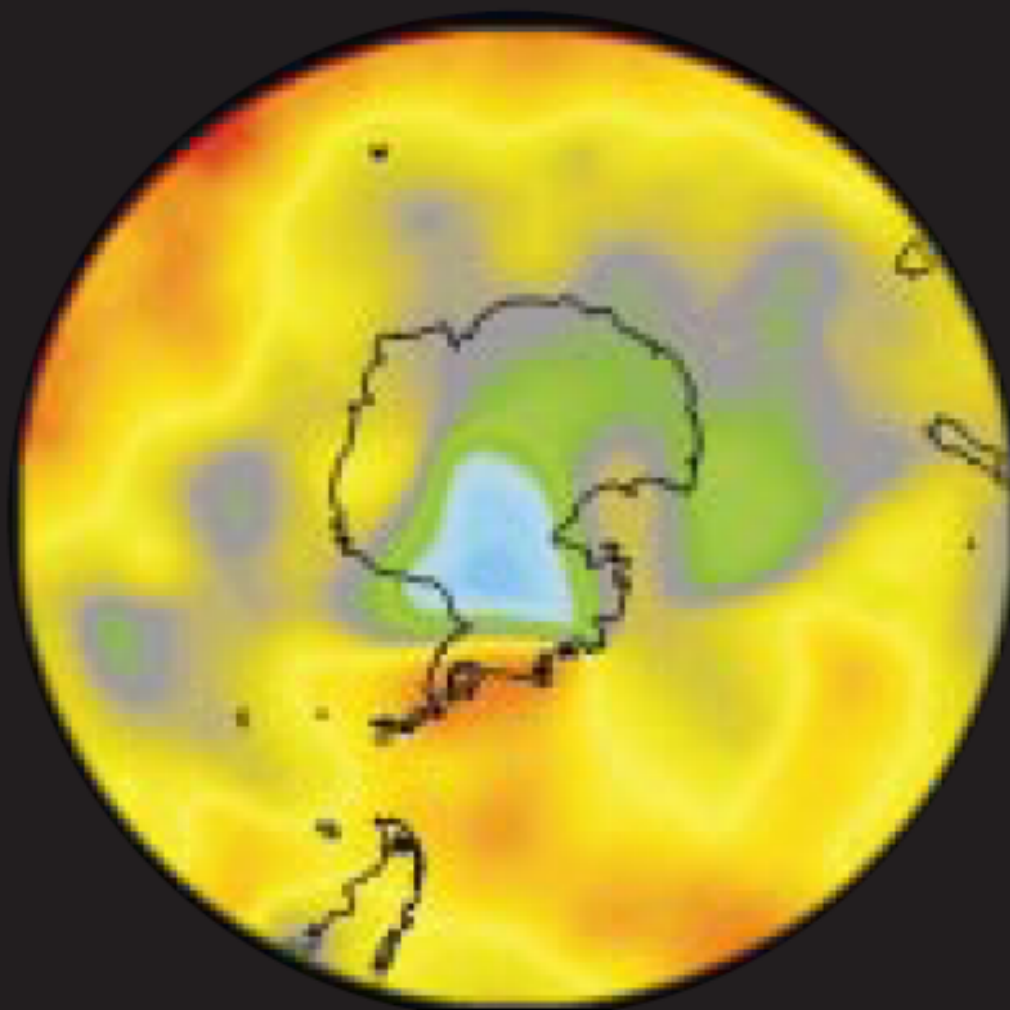




# East Antarctic Ice Sheet, Davis, 2003



Annual (1966–2000)



+0.50

+0.25

0

-0.25

-0.50

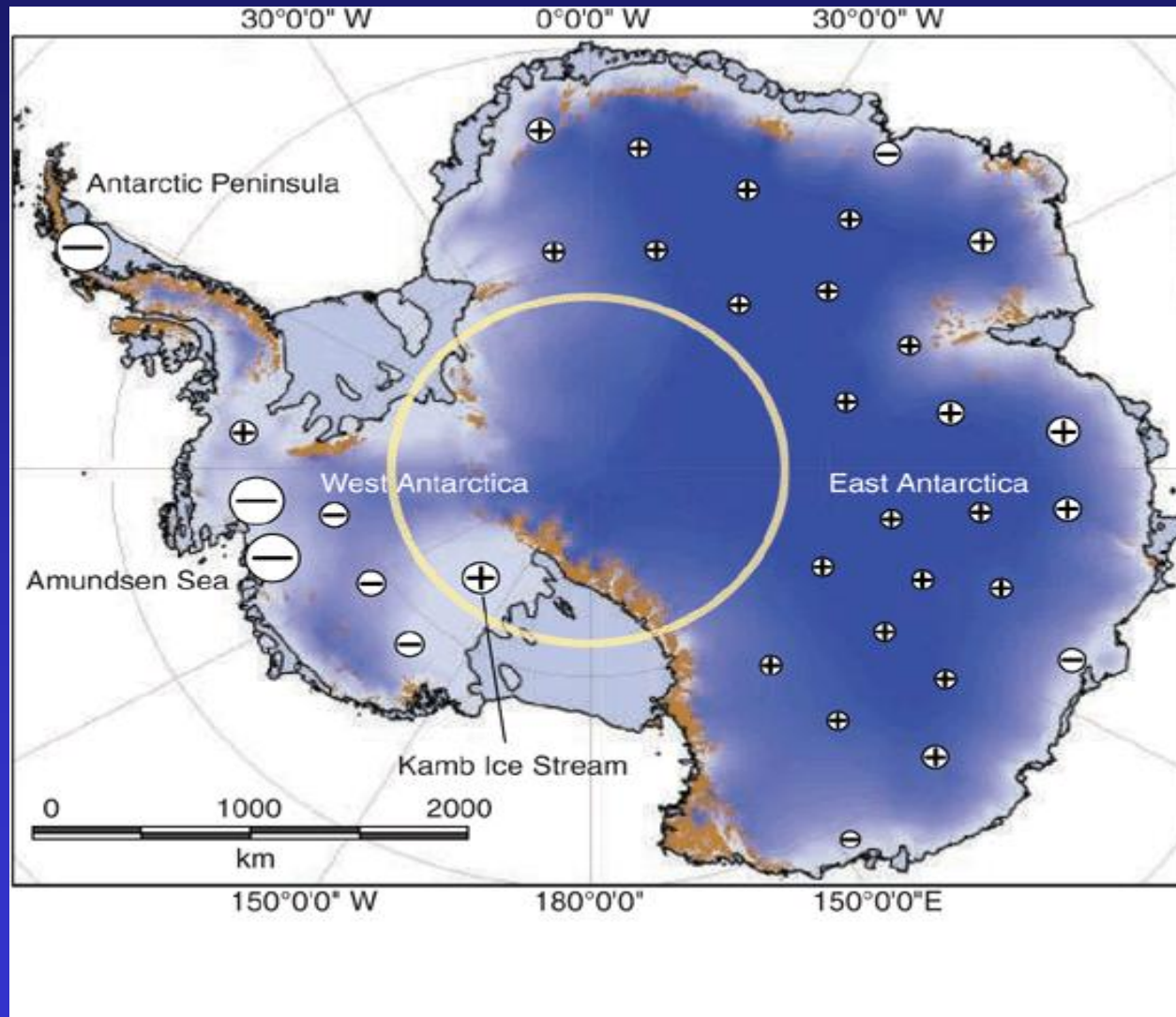
(°C per decade)

**Table 1 Proportions of Antarctica warming and cooling (1966–2000)**

Period	Antarctica	Antarctica without the Antarctic Peninsula
Annual	+41.4%, -58.3%	+33.8%, -65.9%
Winter (June–Aug.)	+62.5%, -37.3%	+56.3%, -43.4%
Spring (Sept.–Nov.)	+54.1%, -45.7%	+49.4%, -50.4%
Summer (Dec.–Feb.)	+31.7%, -67.4%	+22.8%, -76.3%
Autumn (Mar.–May)	+12.6%, -87.4%	+0.3%, -99.7%

Plus signs indicate the proportions warming; minus signs indicate the proportions cooling. The Antarctic Peninsula is defined as the area north of 80° S and east of 80° W.

# Vaughn, 2005

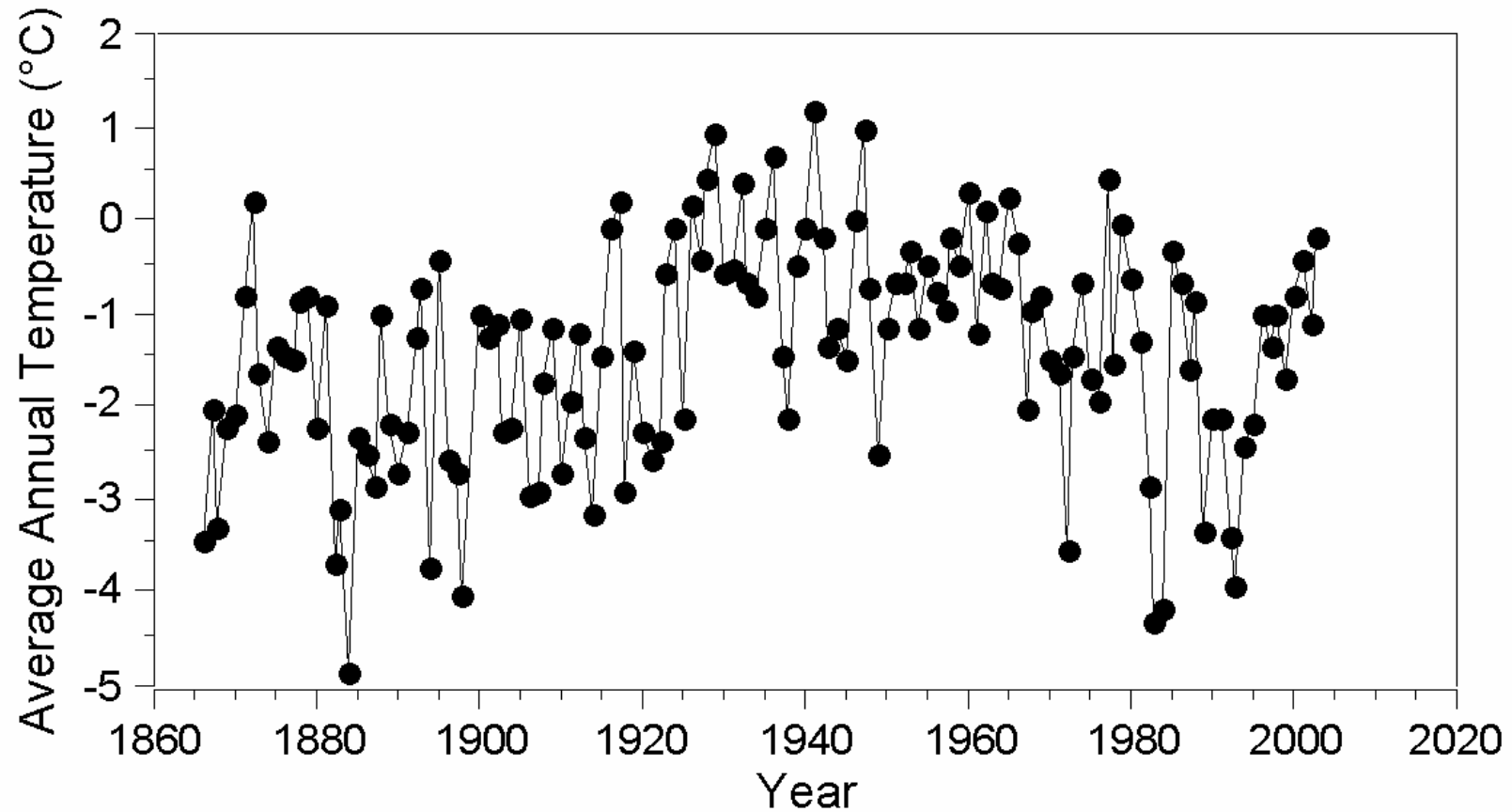


Headline: “Arctic Ice is Melting at Record Levels,”  
Scientists Say

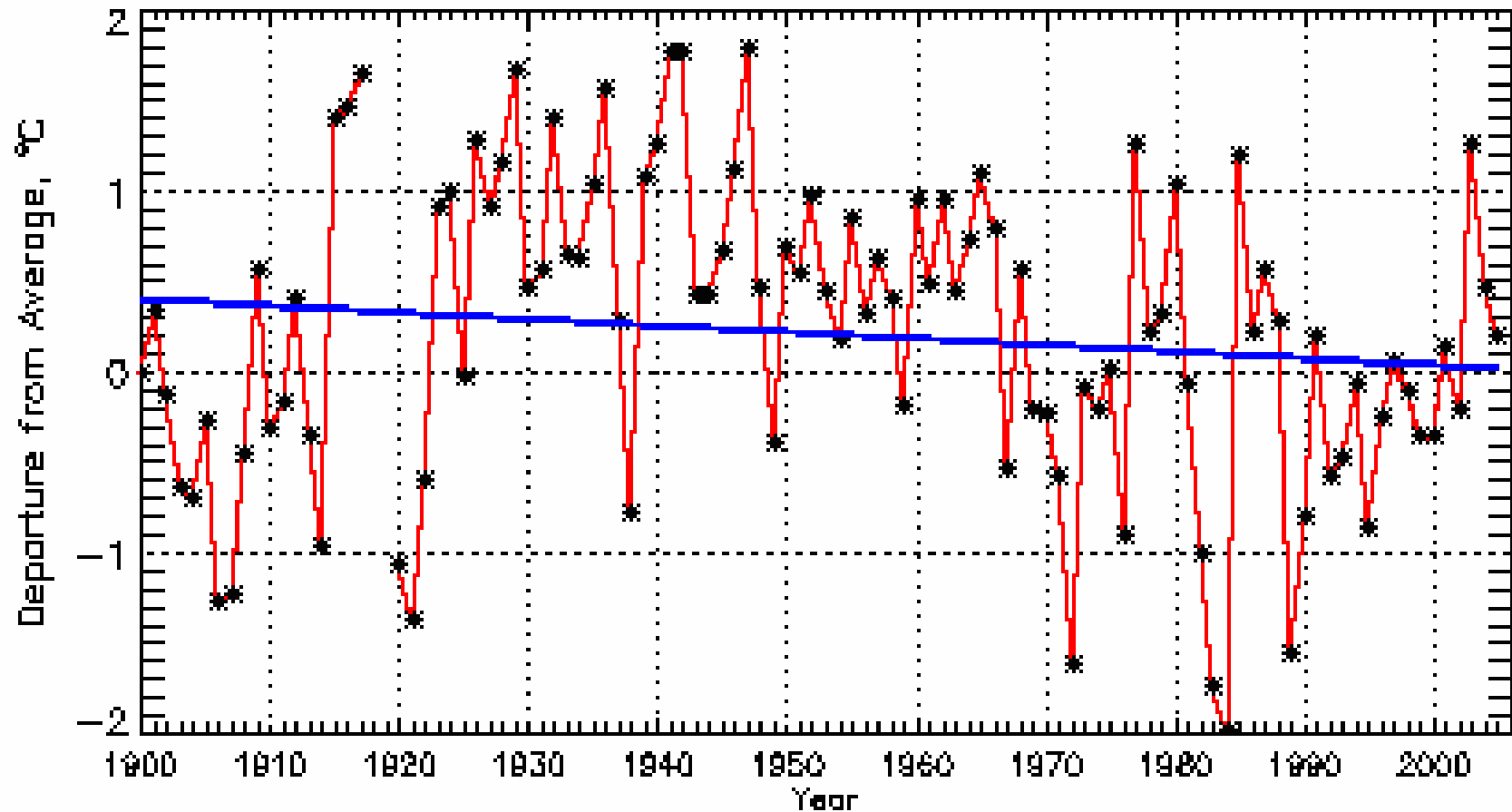
First sentence: “The melting of Greenland glaciers and Arctic Ocean sea ice this past summer reached levels not seen in decades, scientists reported today.”

*-New York Times, December 8, 2002.*

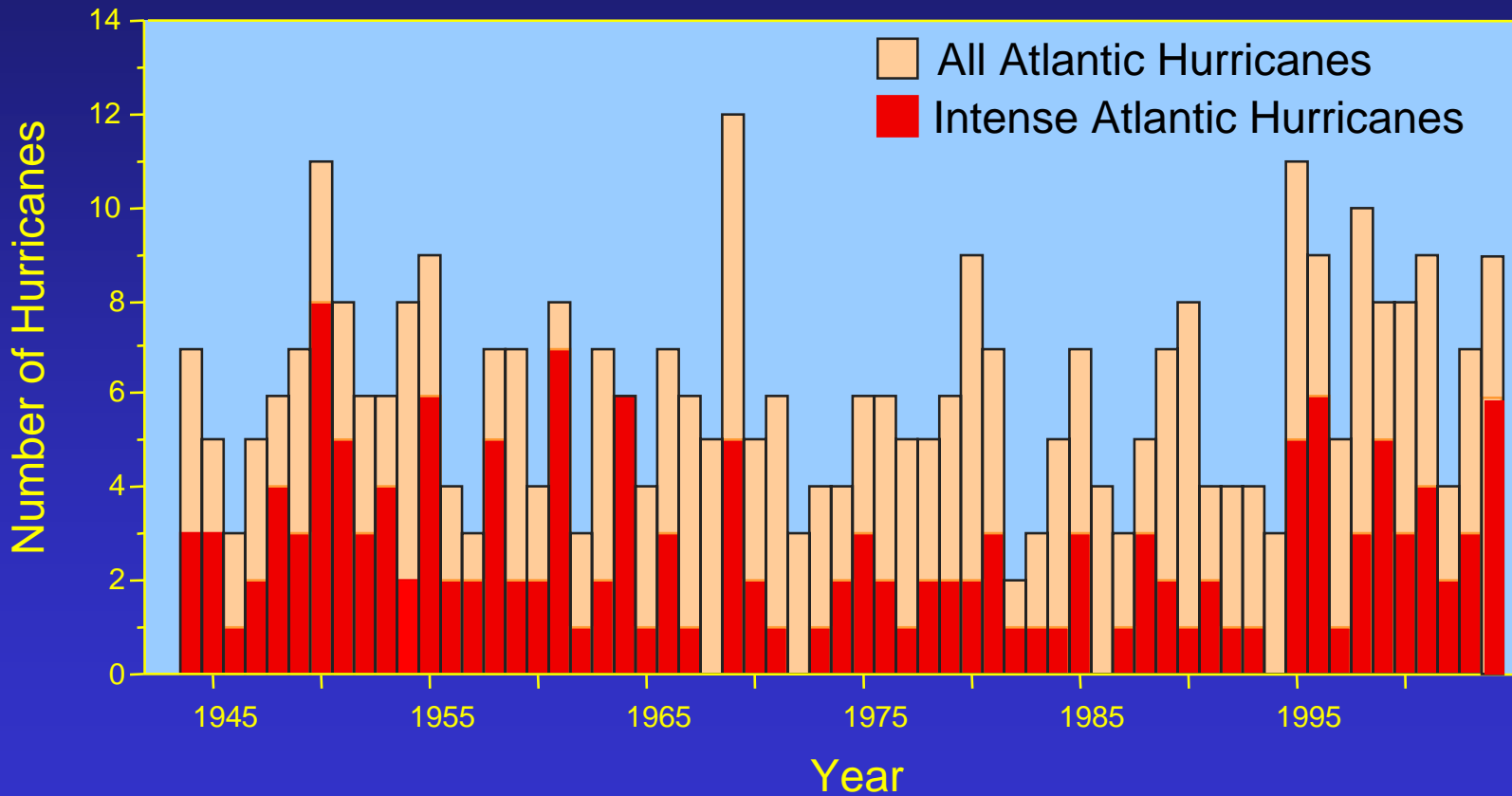
# Southwest Greenland Temperature History



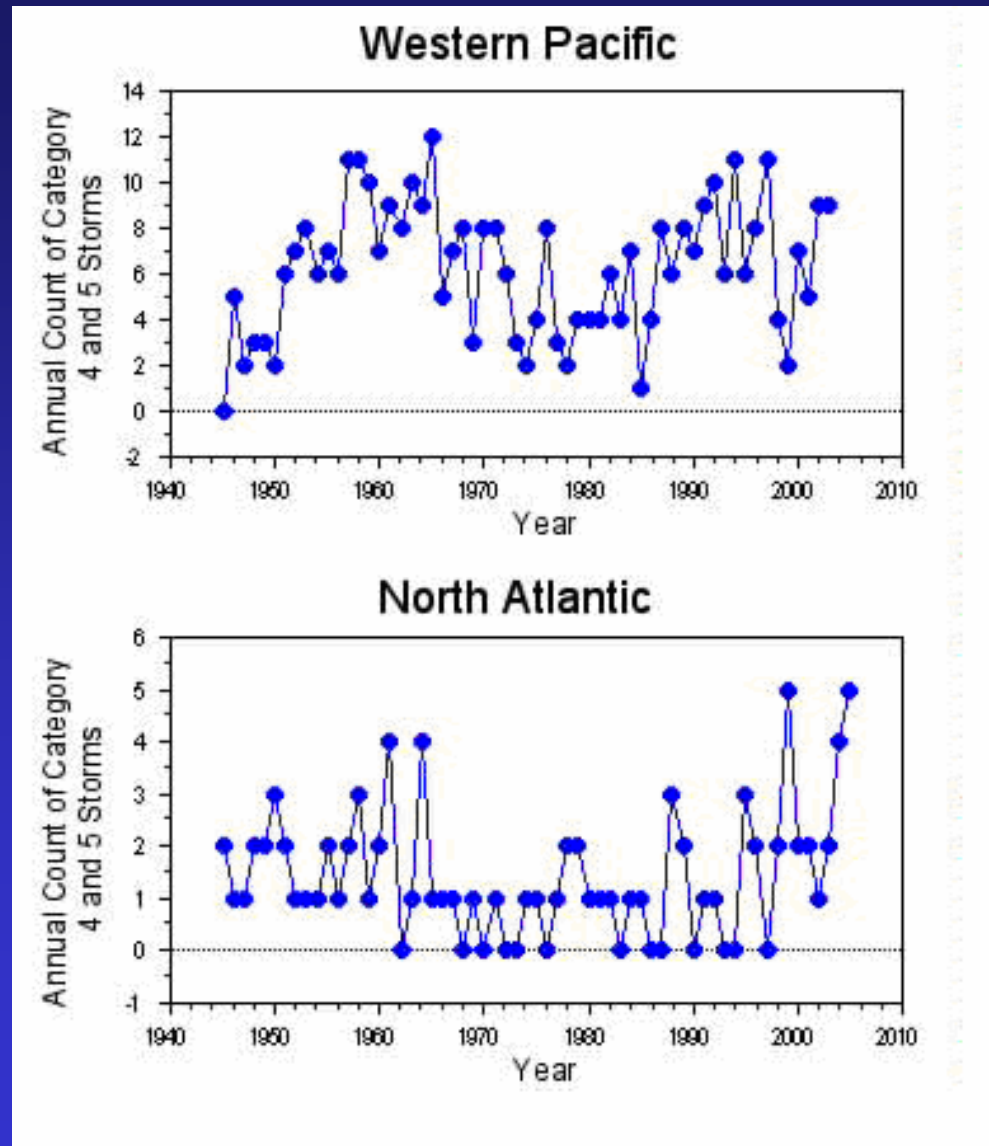
# Southern Greenland Temperature



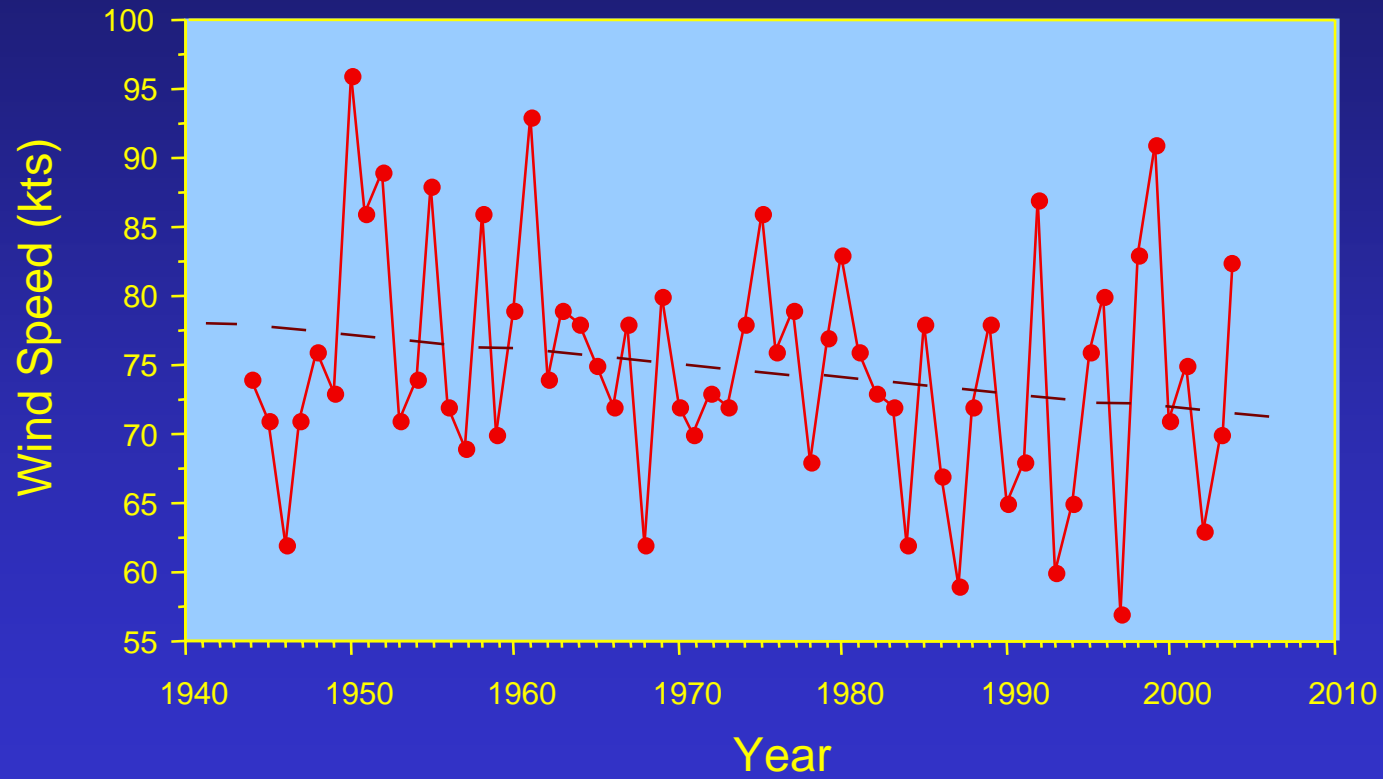
# Annual Number of Hurricanes in the Atlantic Basin 1944-2004



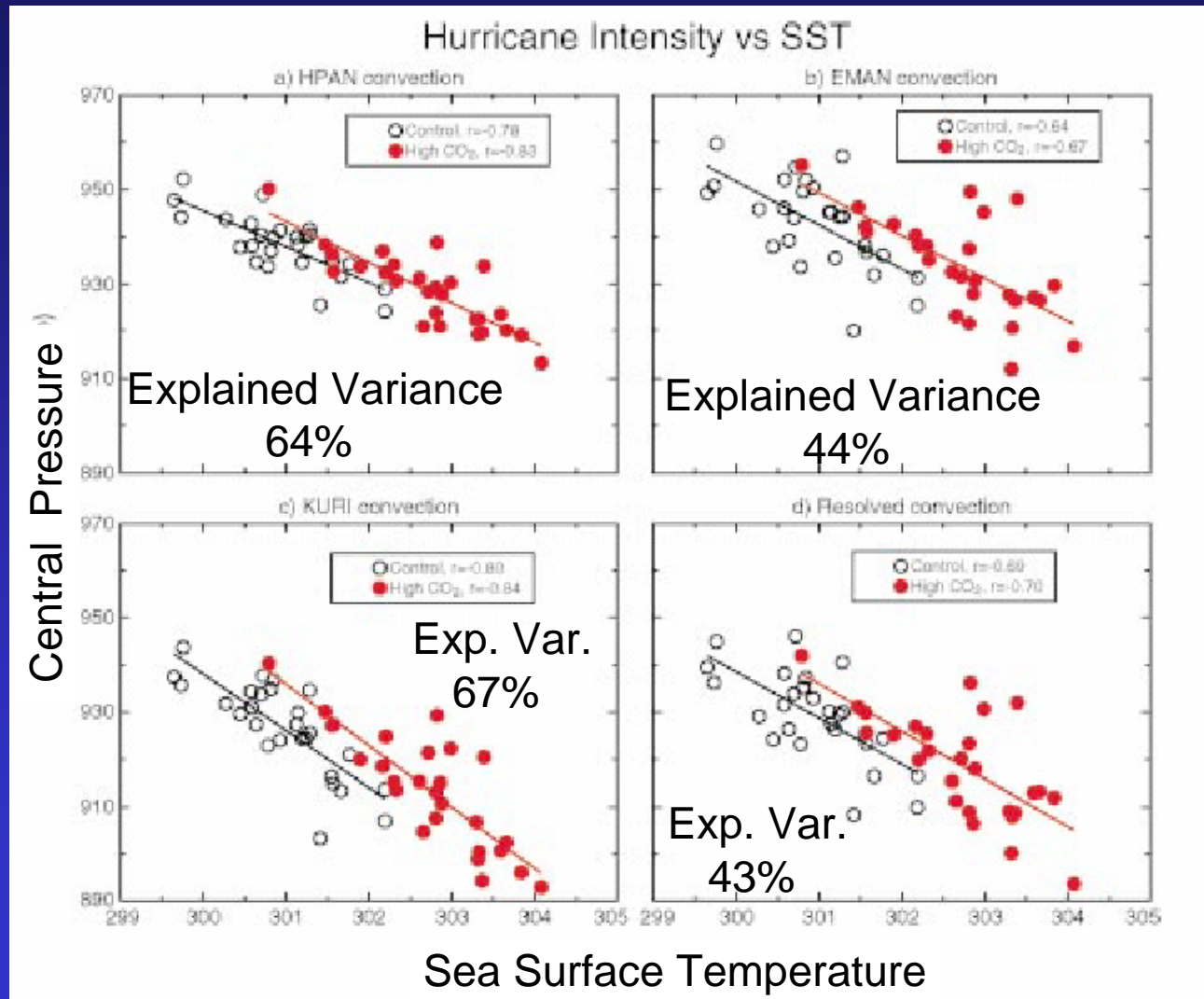
# Annual Number of Category 4 and 5 Hurricanes



# Maximum Wind Speeds in Atlantic Tropical Systems 1944-2004

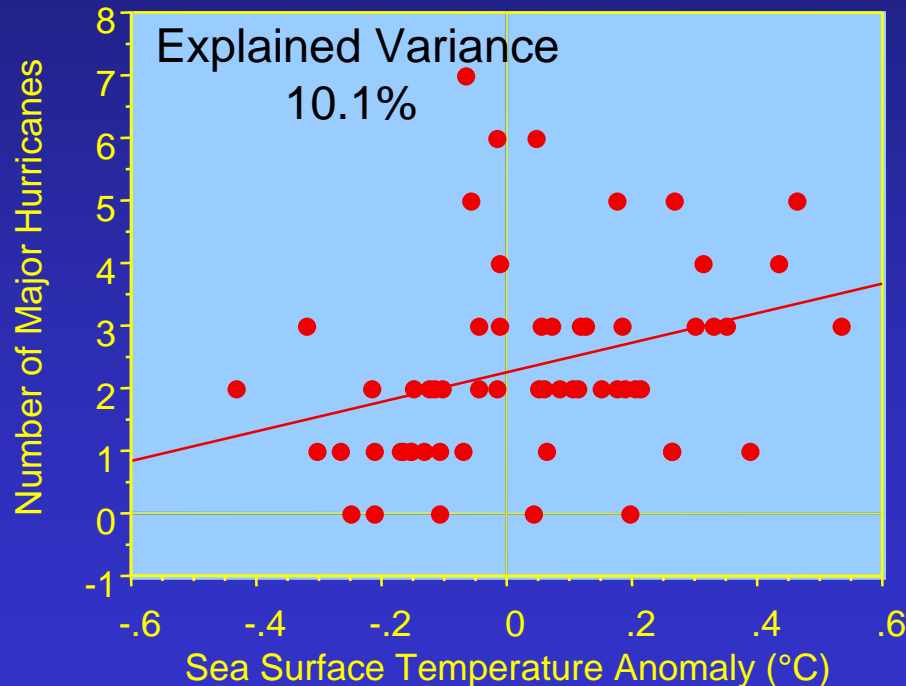


# Modeled Tropical Cyclone Intensity vs. SST

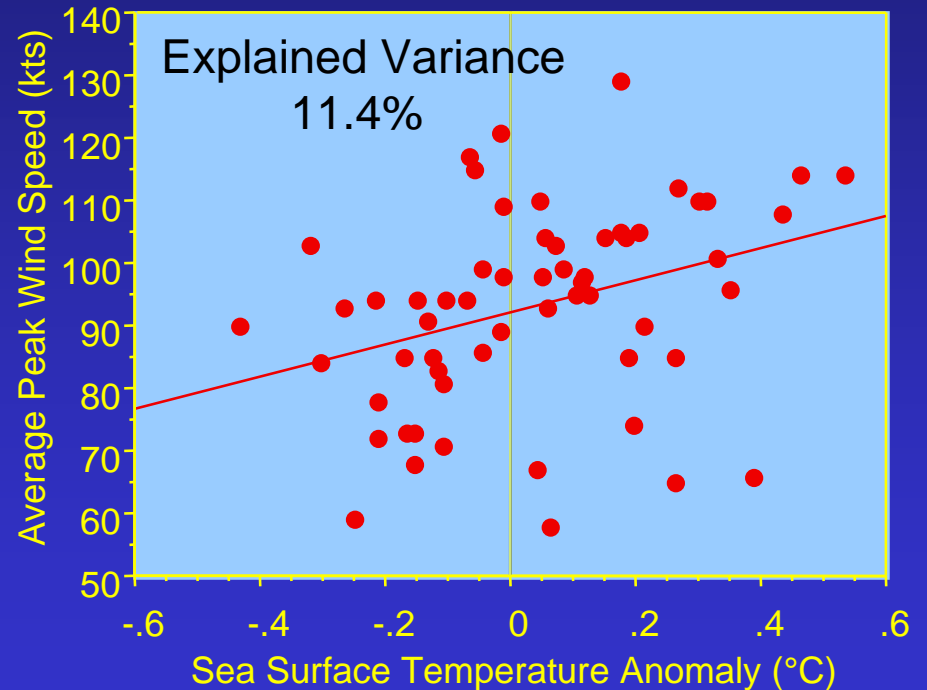


# Observed Tropical Cyclone Characteristics vs. SST

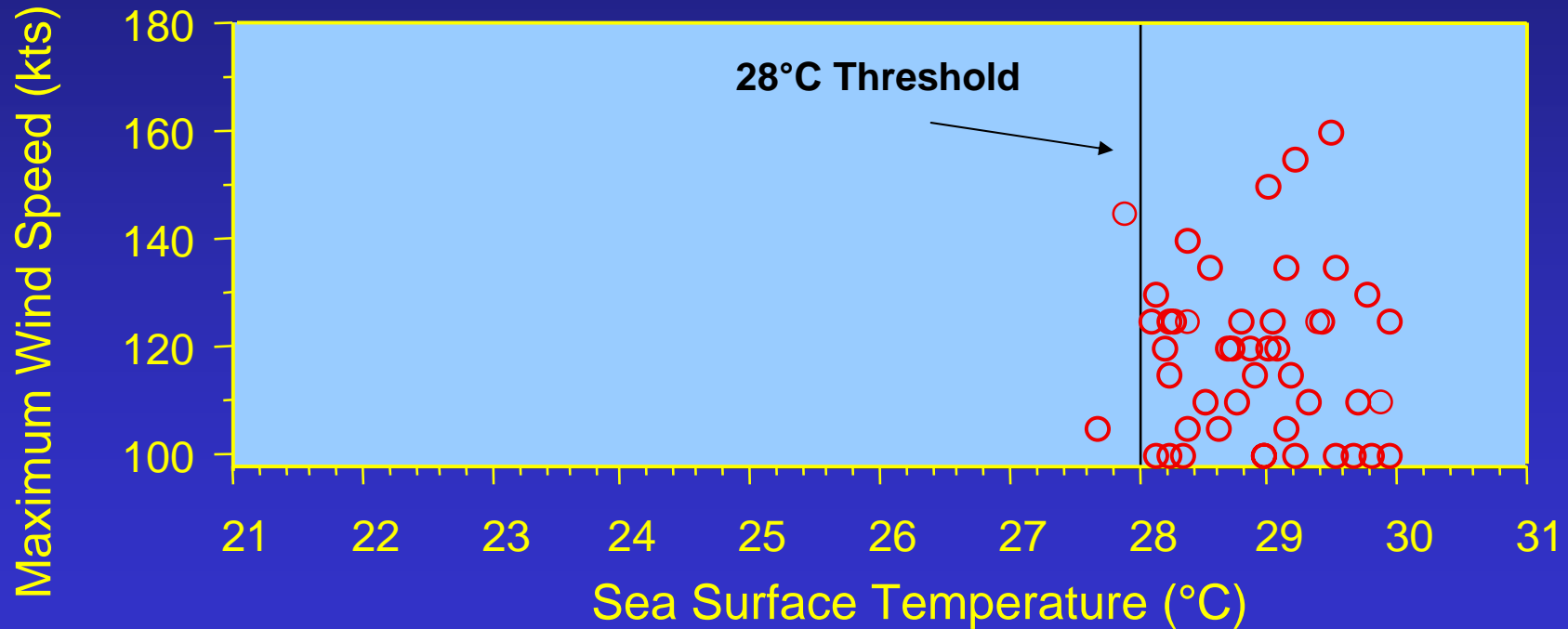
Annual Number of Major Hurricanes



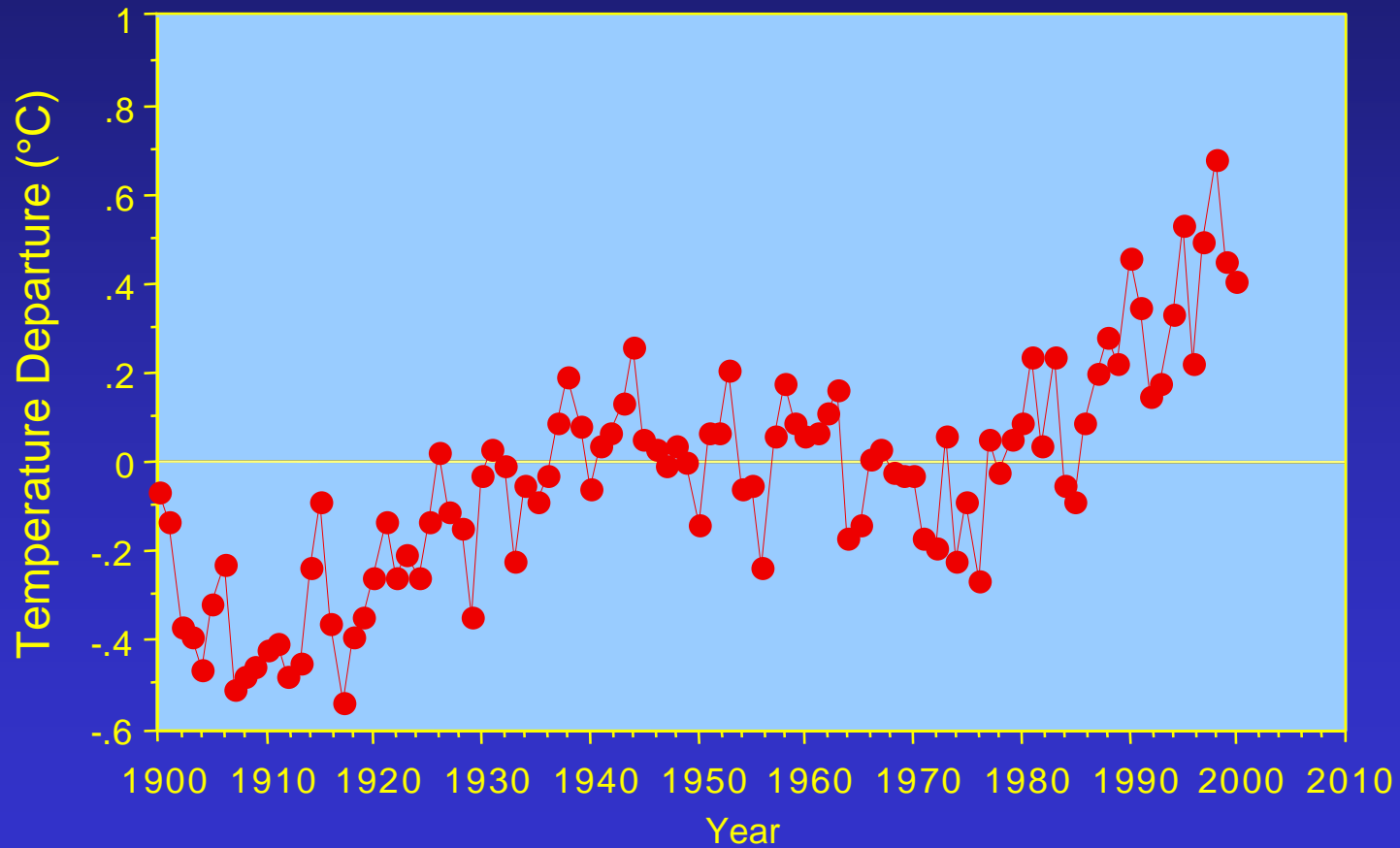
Wind Speed in Strongest 5 Tropical Cyclones



# Maximum Wind Speed (Category 3 or greater) vs. Highest SST Encountered

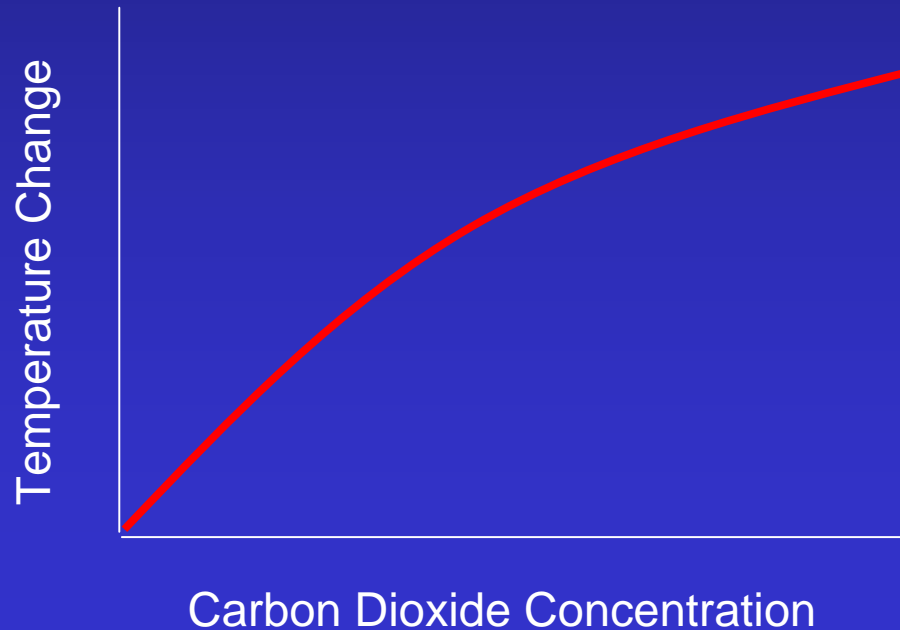


# IPCC Northern Hemisphere Temperature History

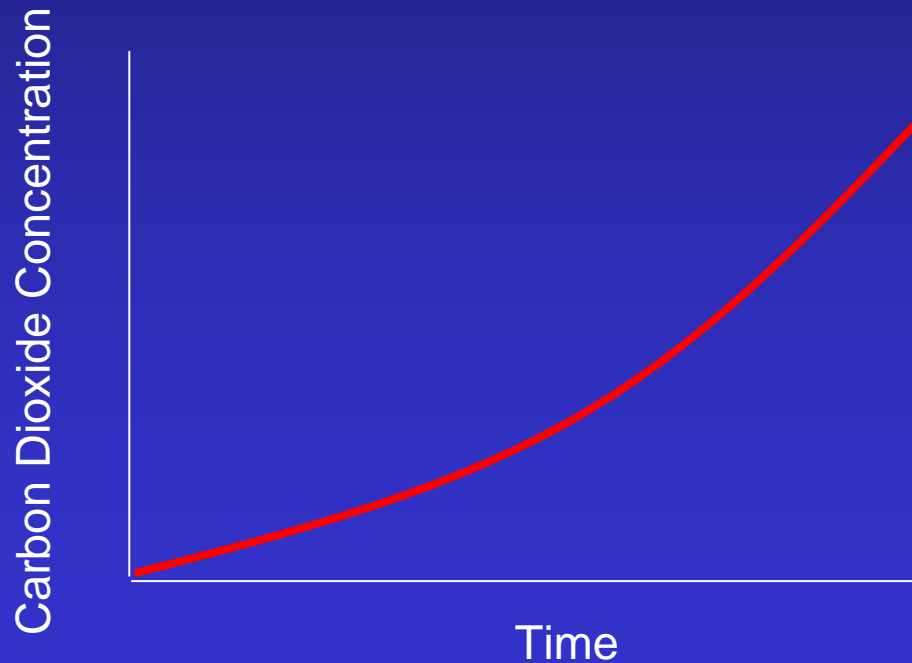


The response to greenhouse gas increases is:

**LOGARITHMIC**

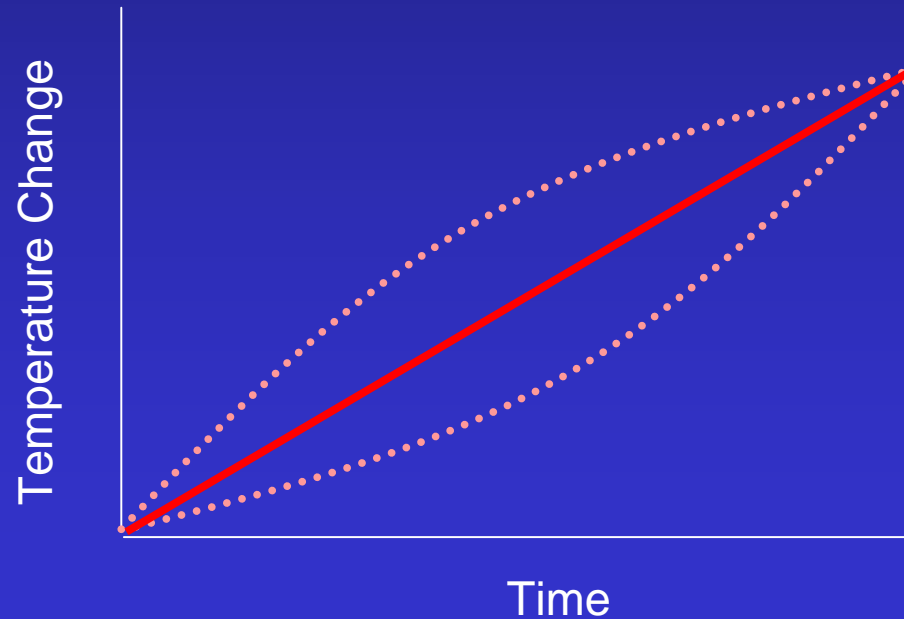


The increase in greenhouse gases WAS  
A LOW ORDER EXPONENT

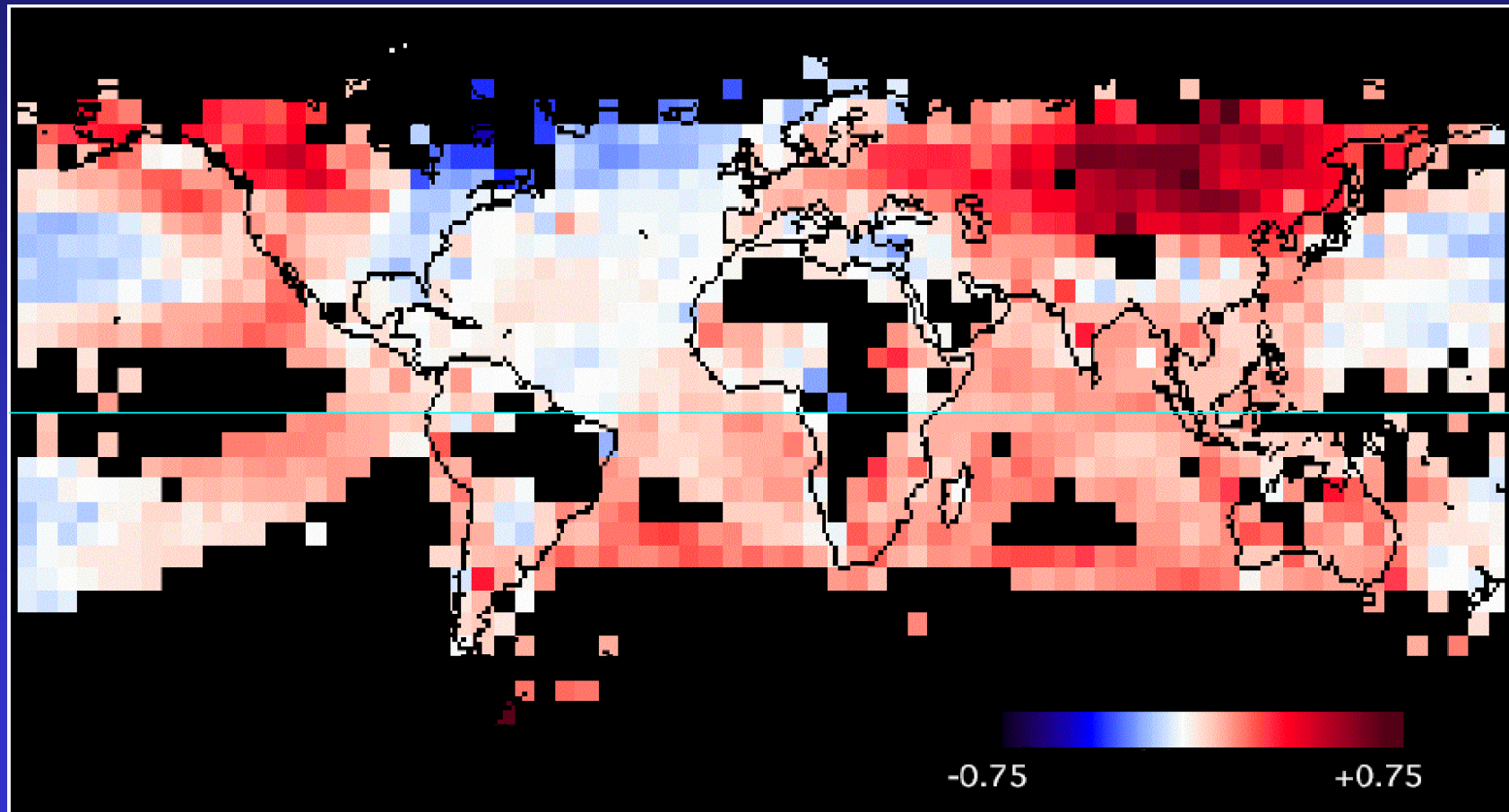


The combination of the two results in:

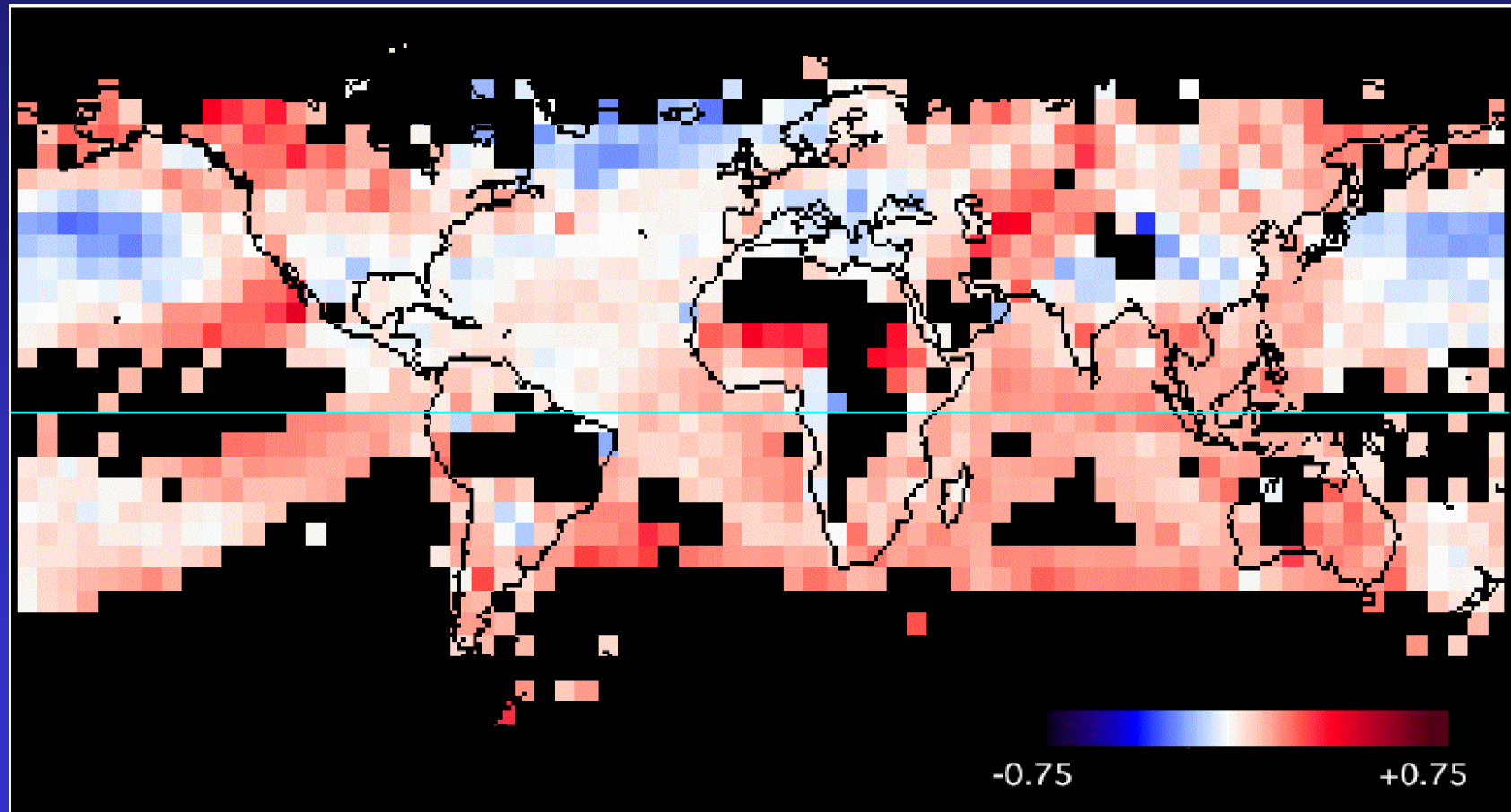
# A STRAIGHT LINE



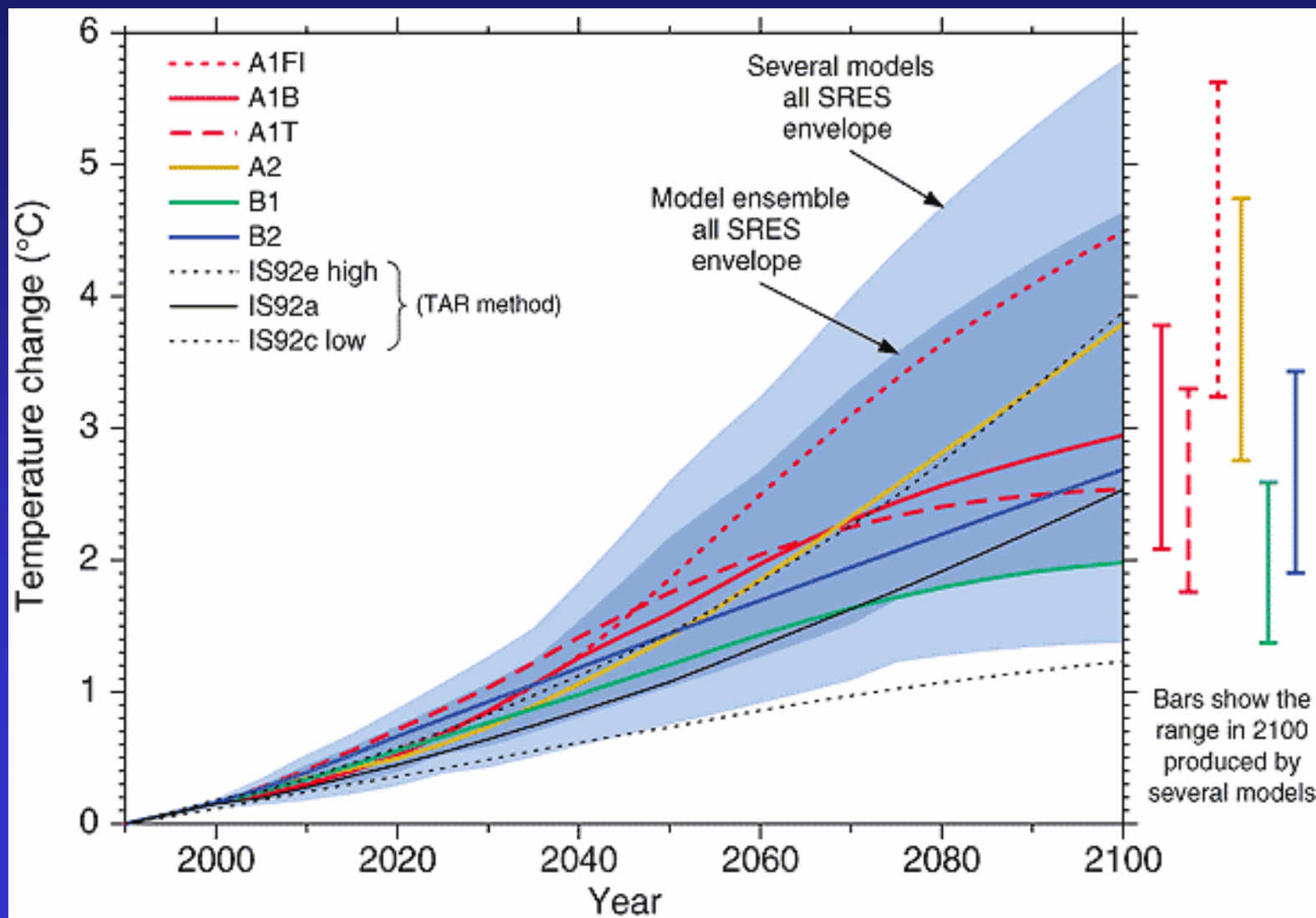
# Cold Season Temperature Trends (1946-1995)



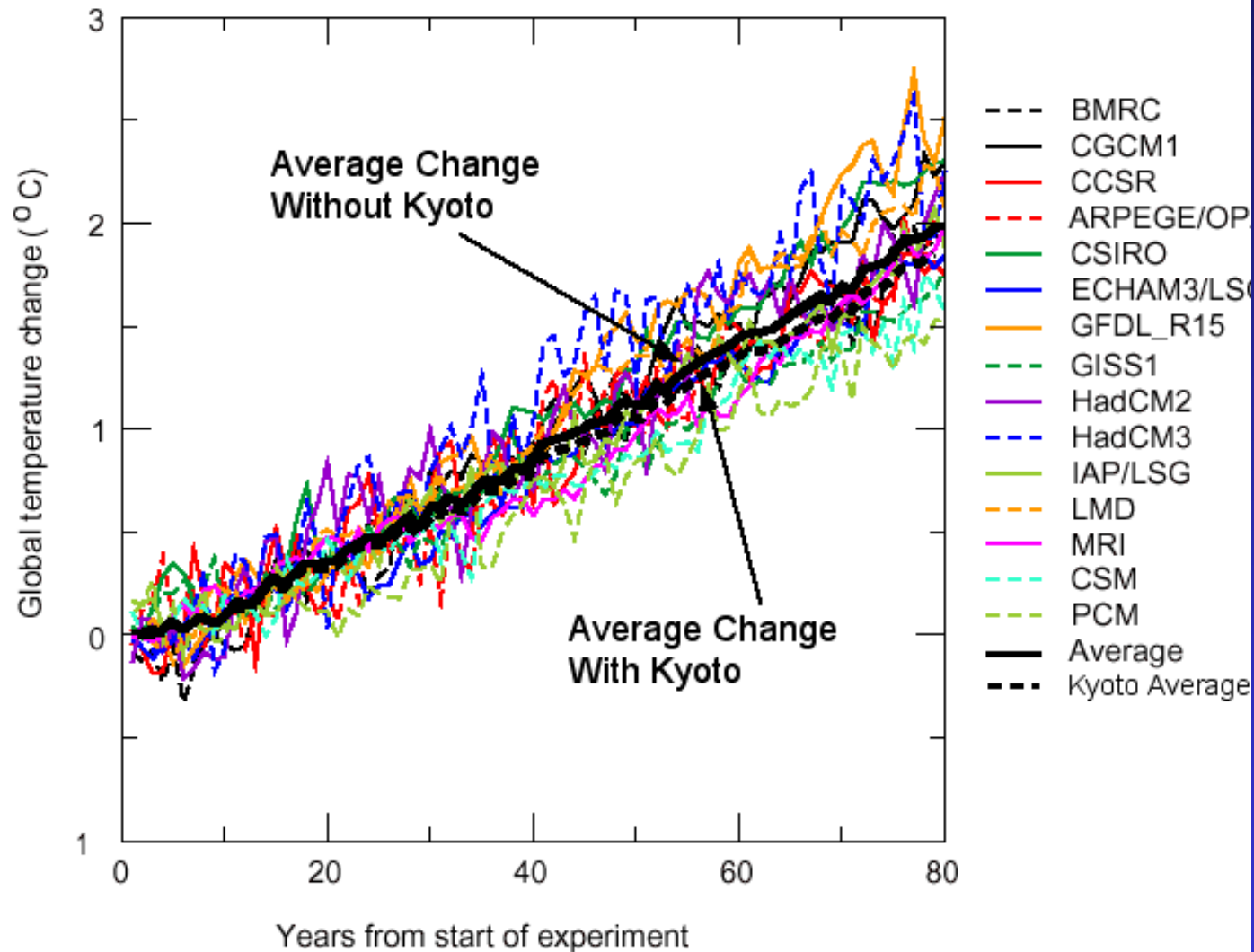
# Warm Season Temperature Trends (1946-1995)

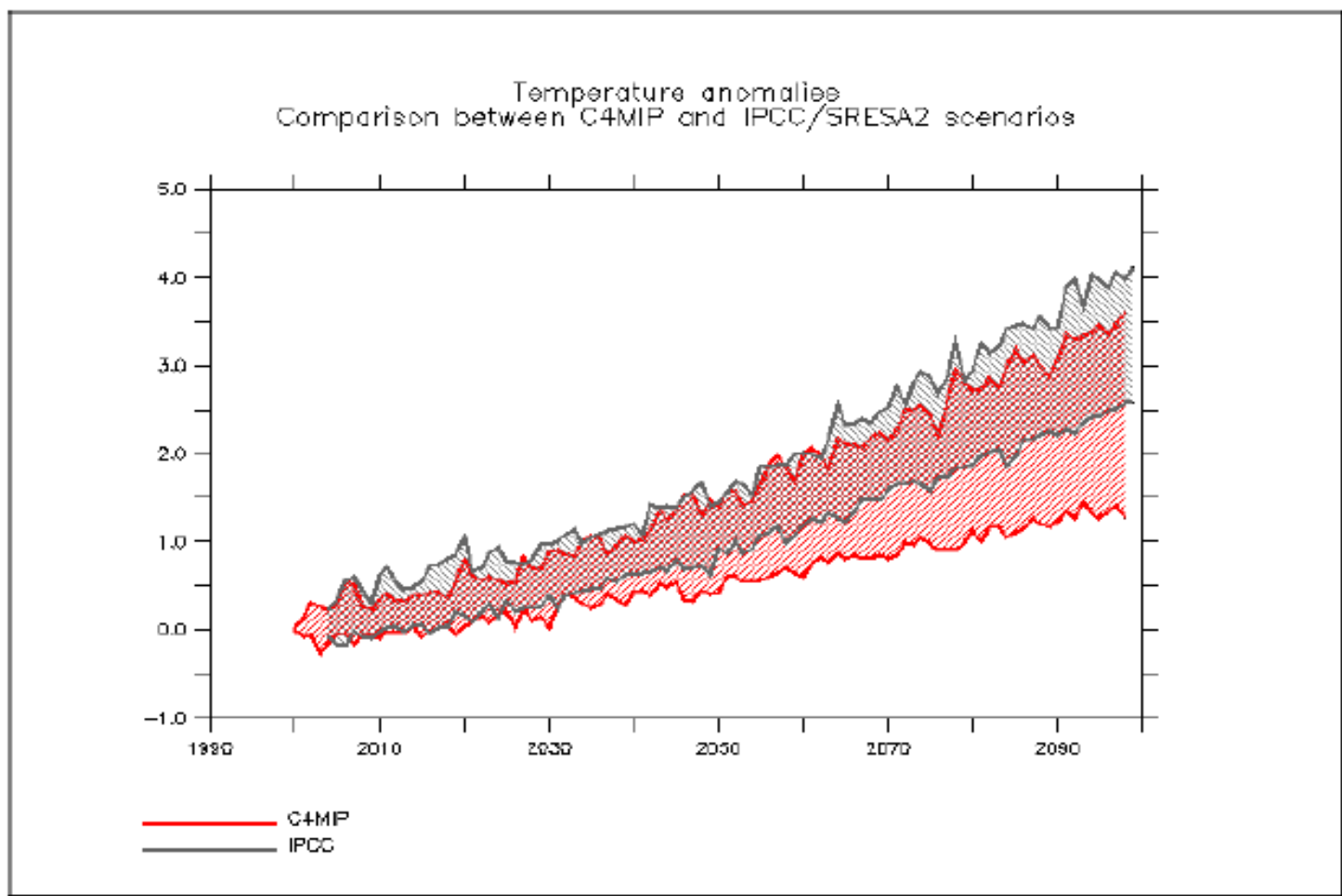


# Projections of Future Temperature in the IPCC Third Assessment Report (TAR)



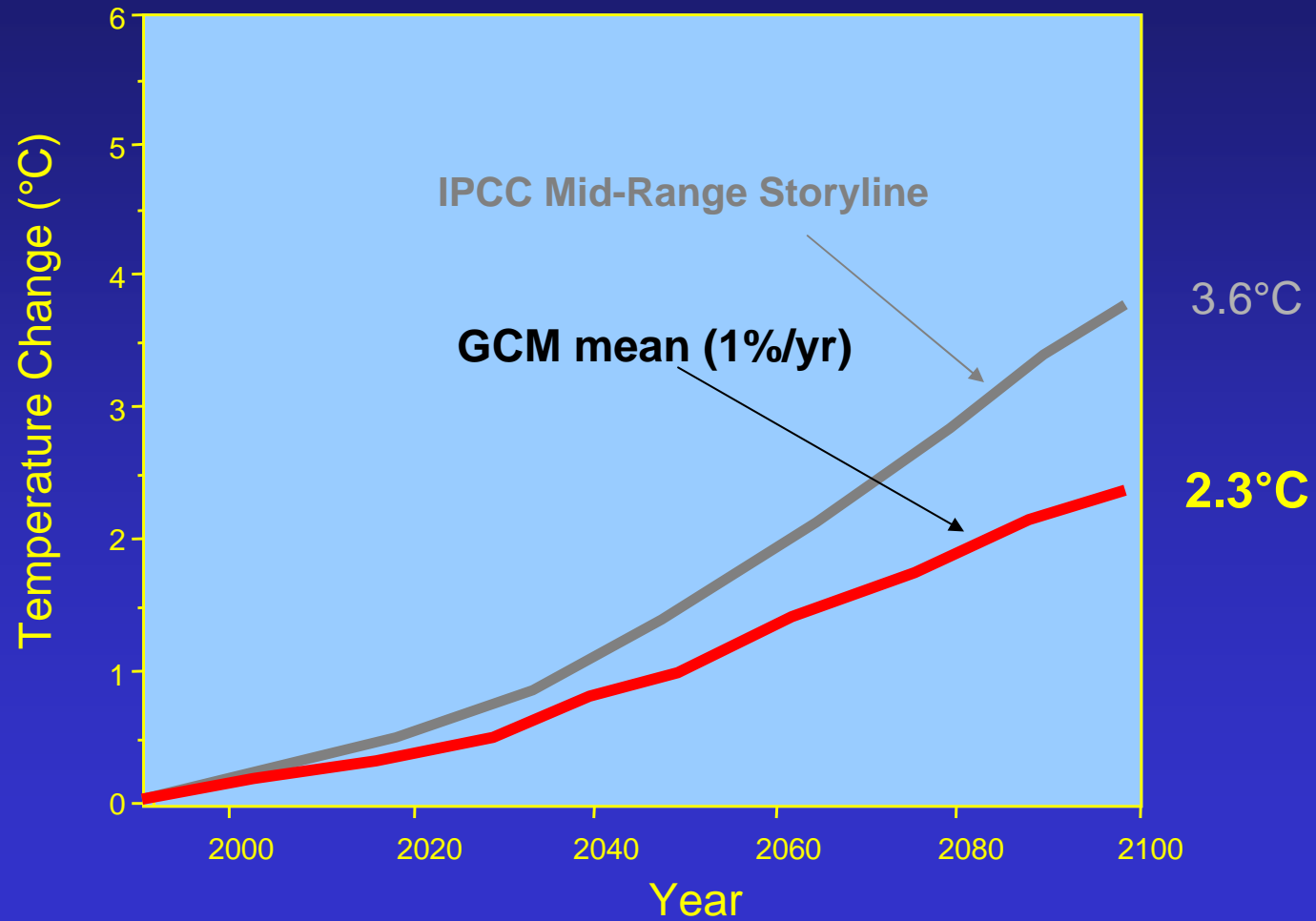
# Predicted Global Temperature Change



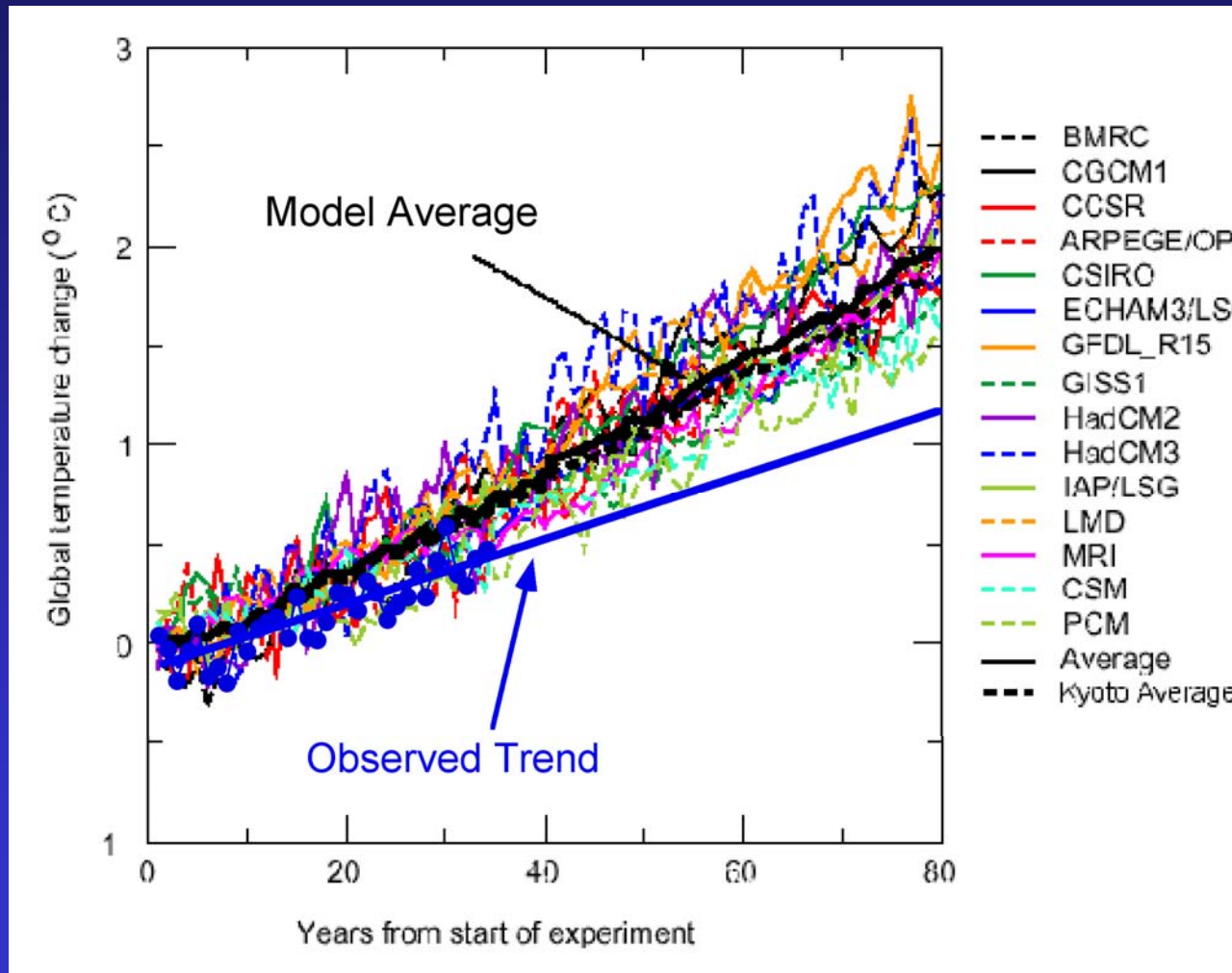


**Figure 10.4.2.** Envelopes of the global temperature change over the 21st century simulated by the C4MIP models (in red), and by the IPCC-AR4 climate models for the SRES-A2 scenario (in grey)

# Temperature Projections



# Observed and Predicted Global Temperature Change



# HONDA MOTOR CO ADR

as of 31-Mar-2006

