

Demographic Trends in North Carolina

Presented to
EDGE Committee,
North Carolina General Assembly
April 5, 2018

Mike Cline, PhD
State Demographer
Office of State Budget & Management,
Demographic & Economic Analysis Section



North Carolina Population vs. Other States

9th Largest State at 10.3 Million

5th Largest Population Gain (737,698 people), April 2010 to July 2017

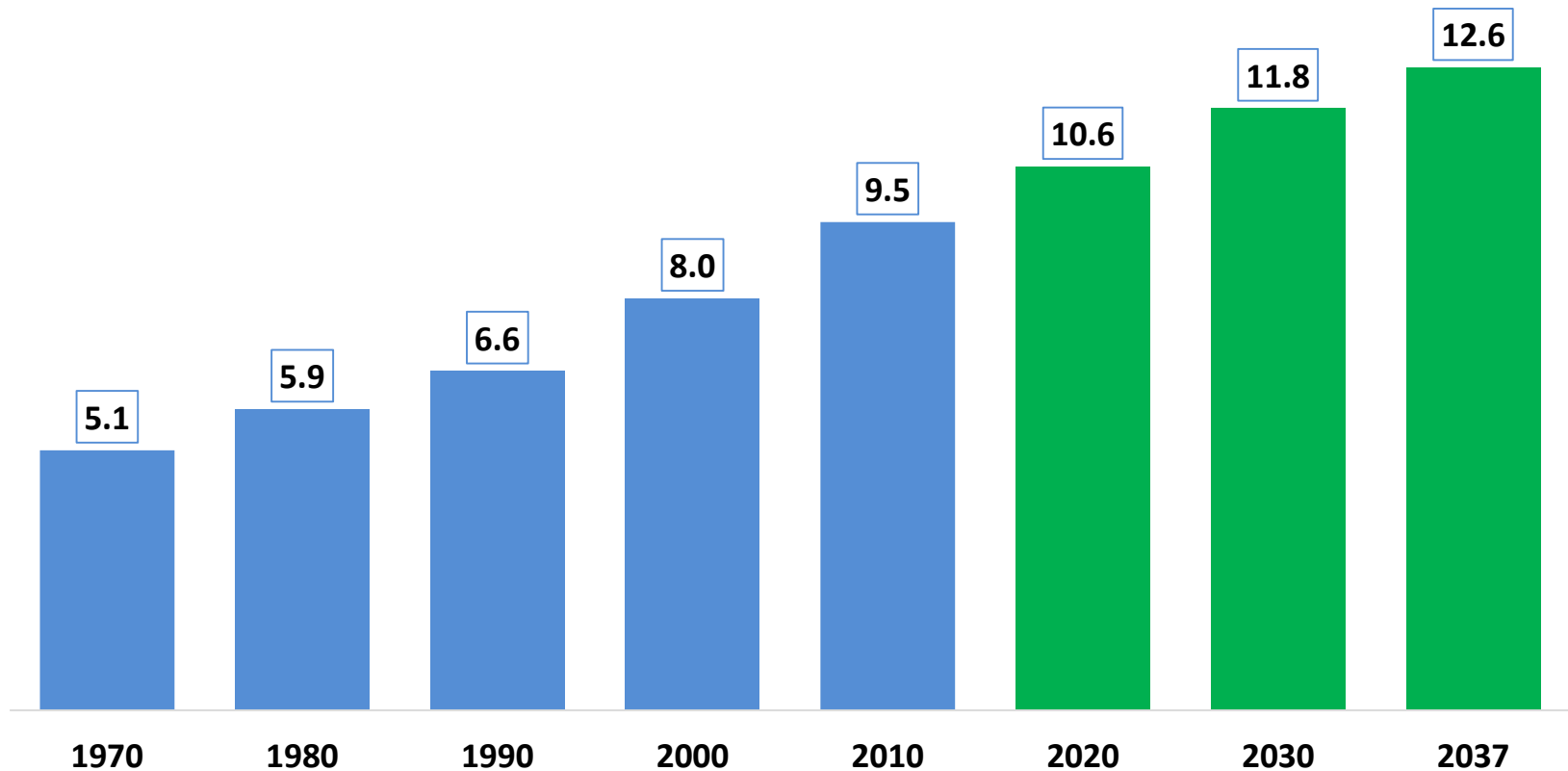
Geographic Area	Population Estimate		Change, 2010 to 2017	
	April 1, 2010	July 1, 2017	Number	Percent
United States	308,758,105	325,719,178	16,961,073	5.5
California	37,254,518	39,536,653	2,282,135	6.1
Texas	25,146,100	28,304,596	3,158,496	12.6
Florida	18,804,594	20,984,400	2,179,806	11.6
New York	19,378,110	19,849,399	471,289	2.4
Pennsylvania	12,702,857	12,805,537	102,680	0.8
Illinois	12,831,565	12,802,023	-29,542	-0.2
Ohio	11,536,730	11,658,609	121,879	1.1
Georgia	9,688,690	10,429,379	740,689	7.6
North Carolina	9,535,721	10,273,419	737,698	7.7
Michigan	9,884,129	9,962,311	78,182	0.8

Source: U.S. Census Bureau, Population Estimates, 2017 Vintage.



North Carolina Population Change – Historic and Projected

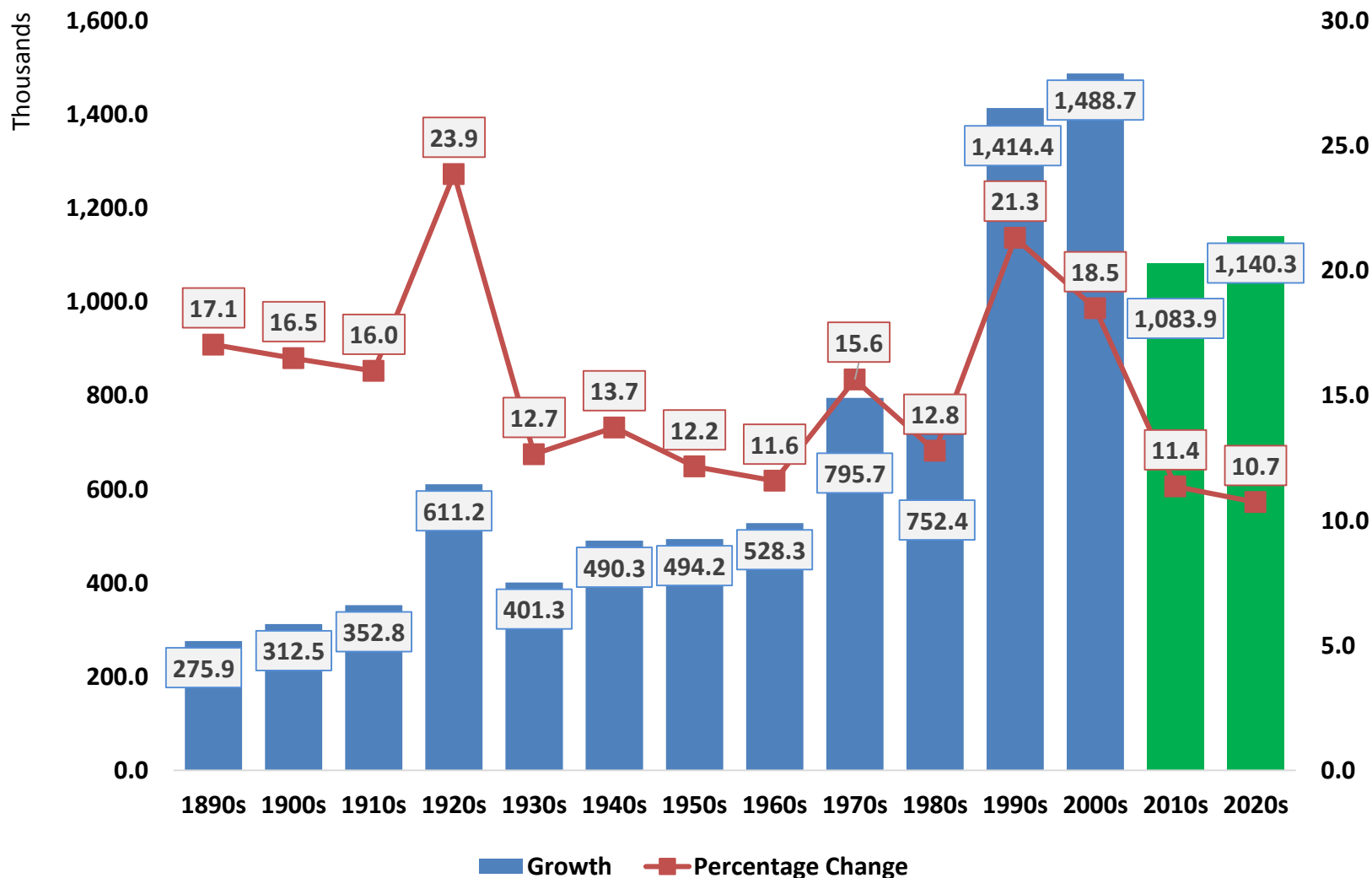
**North Carolina Population, 1970 – 2010
and Projected Through 2037**
Millions of People



Source: US Census Bureau, Decennial Censuses; OSBM Population Projections, 2017 Vintage.



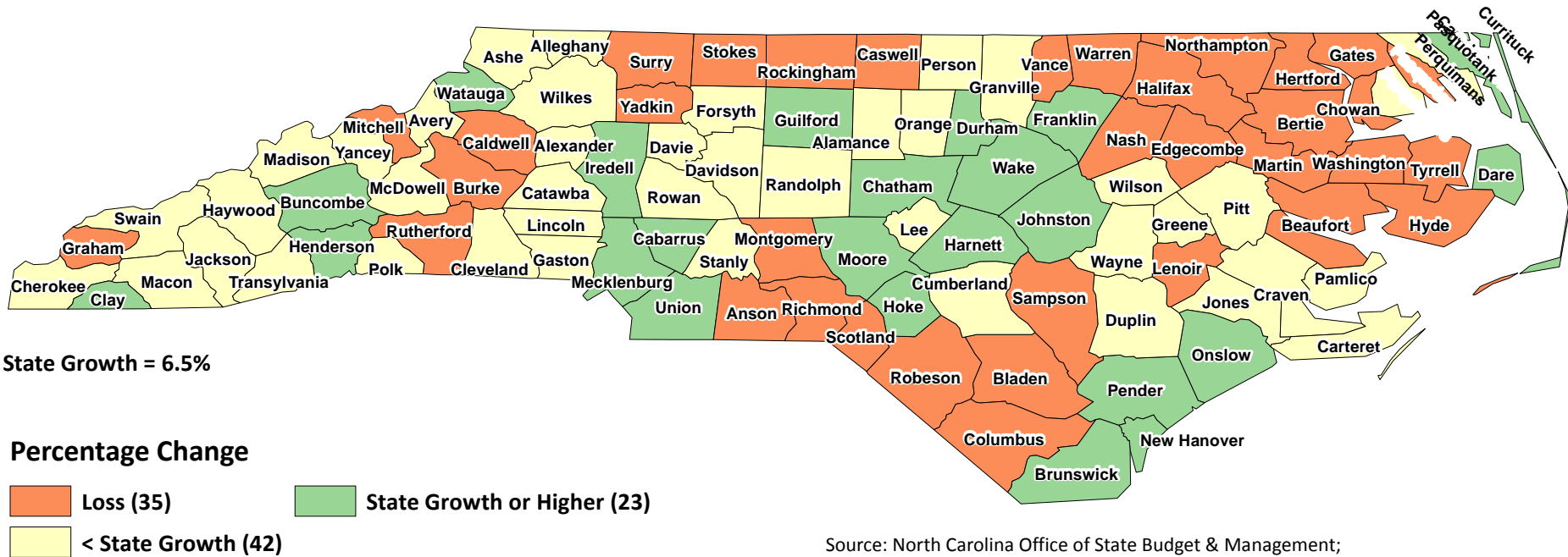
North Carolina Population Change – Historic and Projected





North Carolina Population Change – Historic

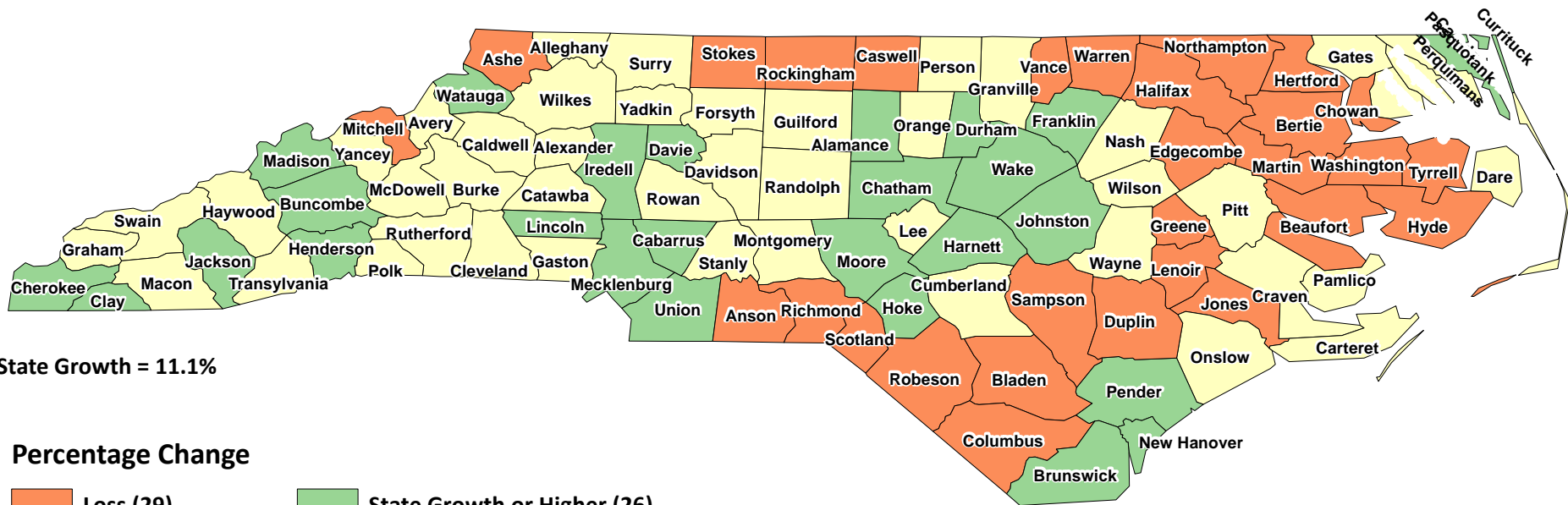
Percentage Population Change in North Carolina Counties, April 1, 2010 - July 1, 2016



Source: North Carolina Office of State Budget & Management;
Demographic & Economic Analysis Branch, Certified Population Estimates, 2016 Vintage.



Projected Percentage Population Change in North Carolina Counties, 2017 - 2027



State Growth = 11.1%

Percentage Change

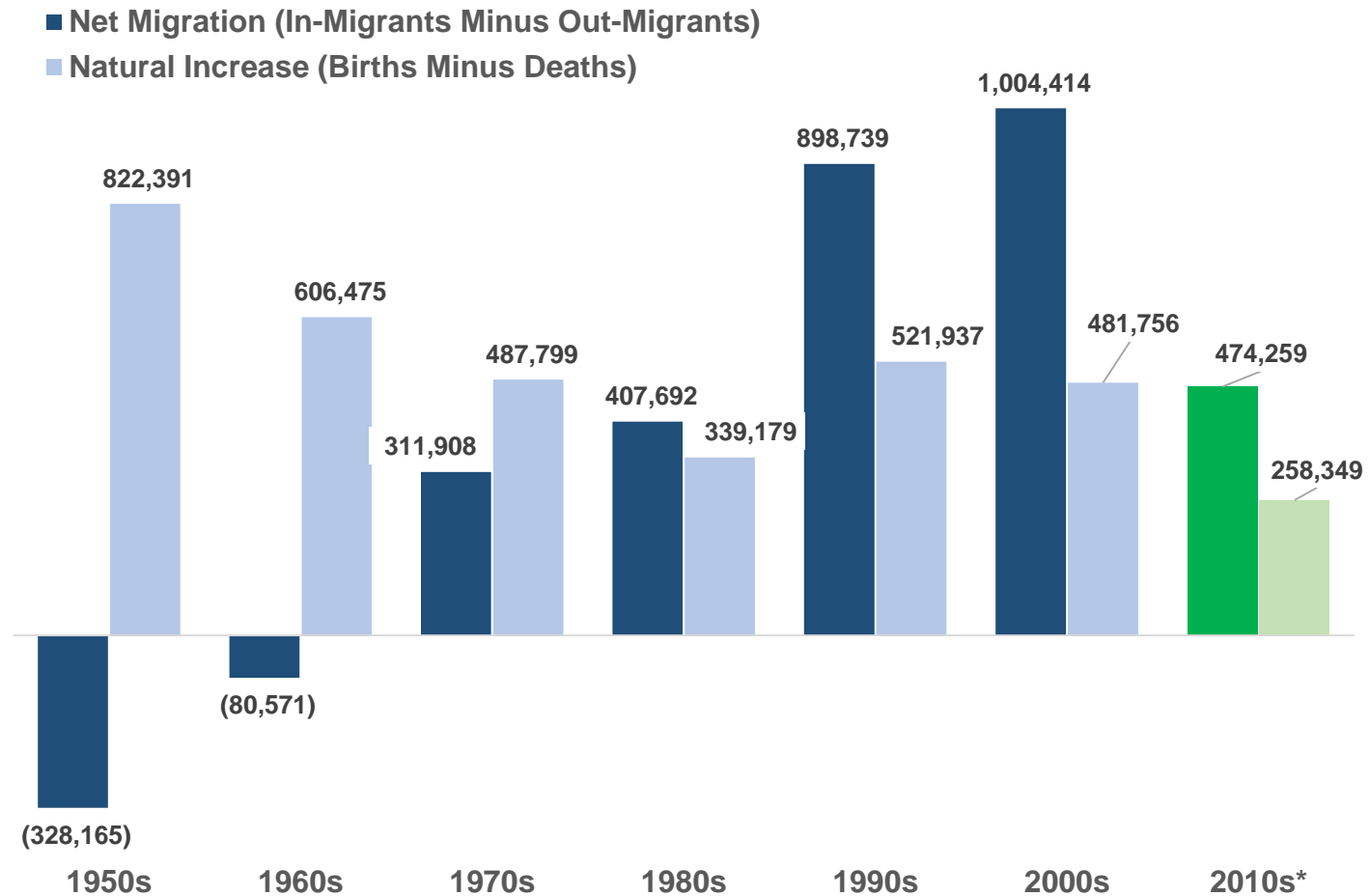
Loss (29)
 State Growth or Higher (26)

< State Growth (45)

Source: North Carolina Office of State Budget & Management;
Demographic & Economic Analysis Branch, Certified Population Estimates, 2016 Vintage.



Components of Population Change by Period, 1950 - 2017



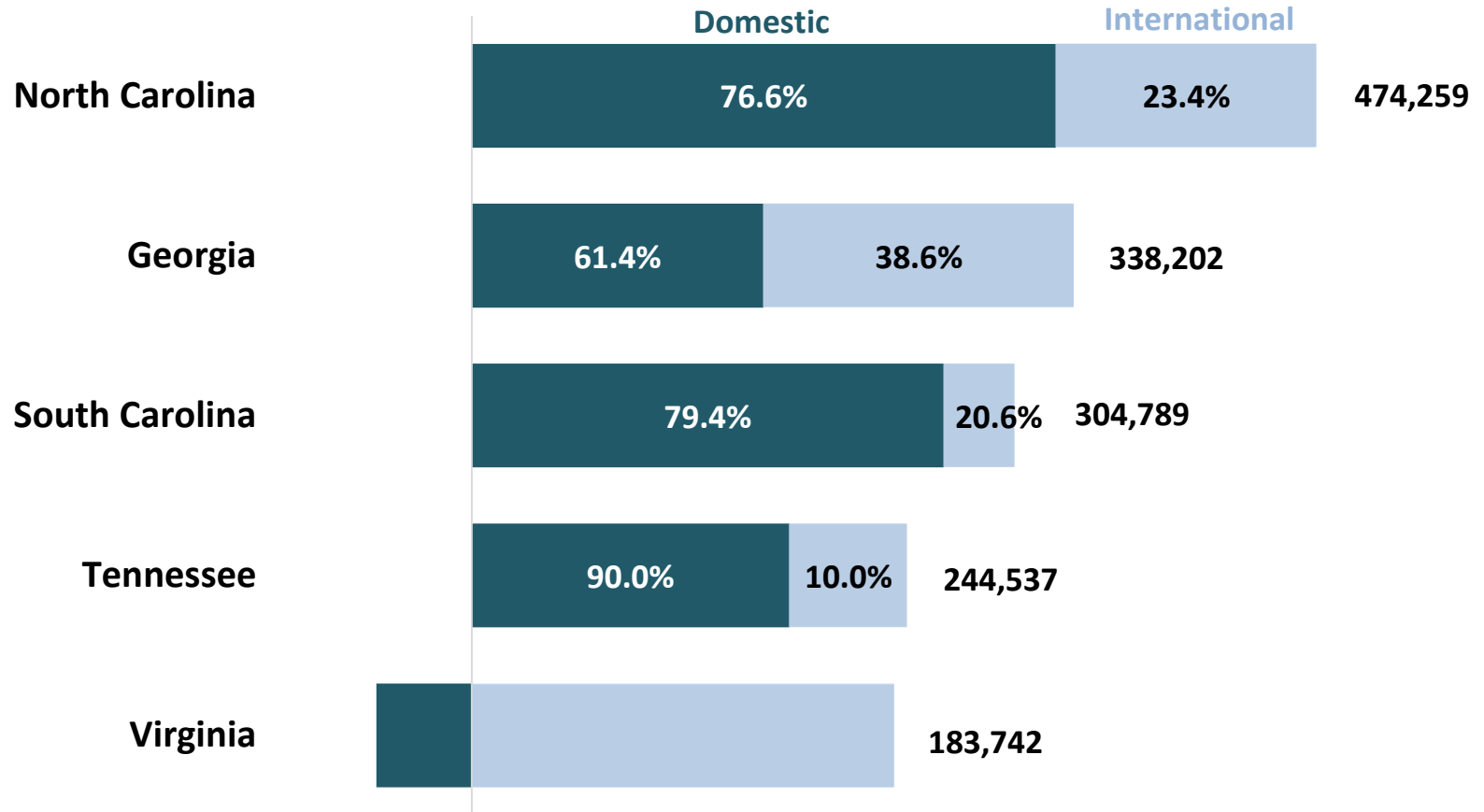
Source: US Census Bureau, State Population Estimates, Vintage 2017; Age-Specific Net Migration Estimates for US Counties, 1950-2010.
Applied Population Laboratory, UW-Madison.



Migration

More Migration to North Carolina vs Neighbors in Recent Years

Net Domestic and International Migration, April 2010 to July 2017



Source: U.S. Census Bureau, Population Estimates for States, Vintage 2017.

April 5, 2018

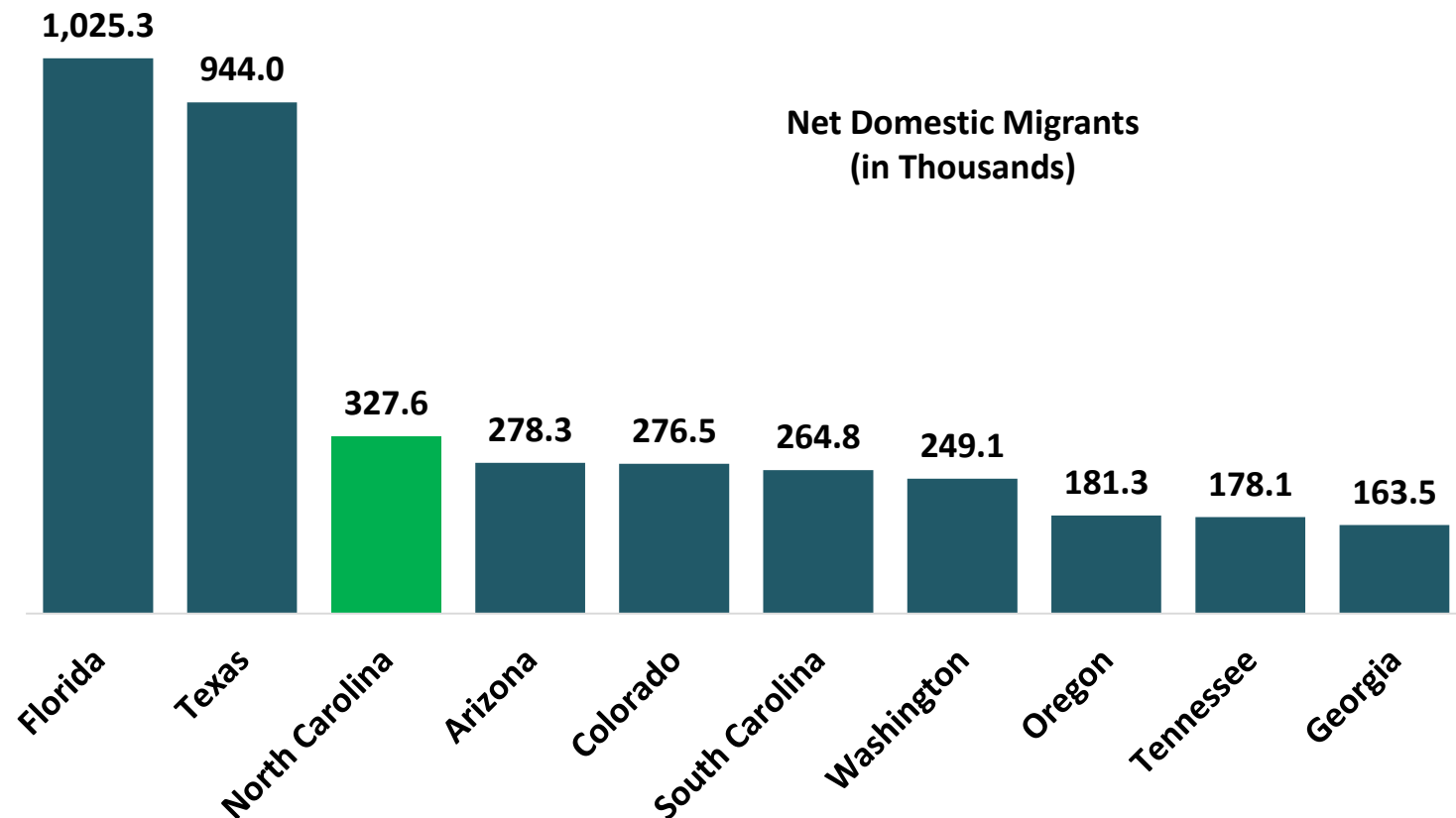
Office of State Budget & Management



Migration (cont'd)

Net Domestic Migration Larger Than All But Florida and Texas

Net Domestic Migration for the 10 States with the Largest Number of Net Domestic Migrants, April 2010 to July 2017



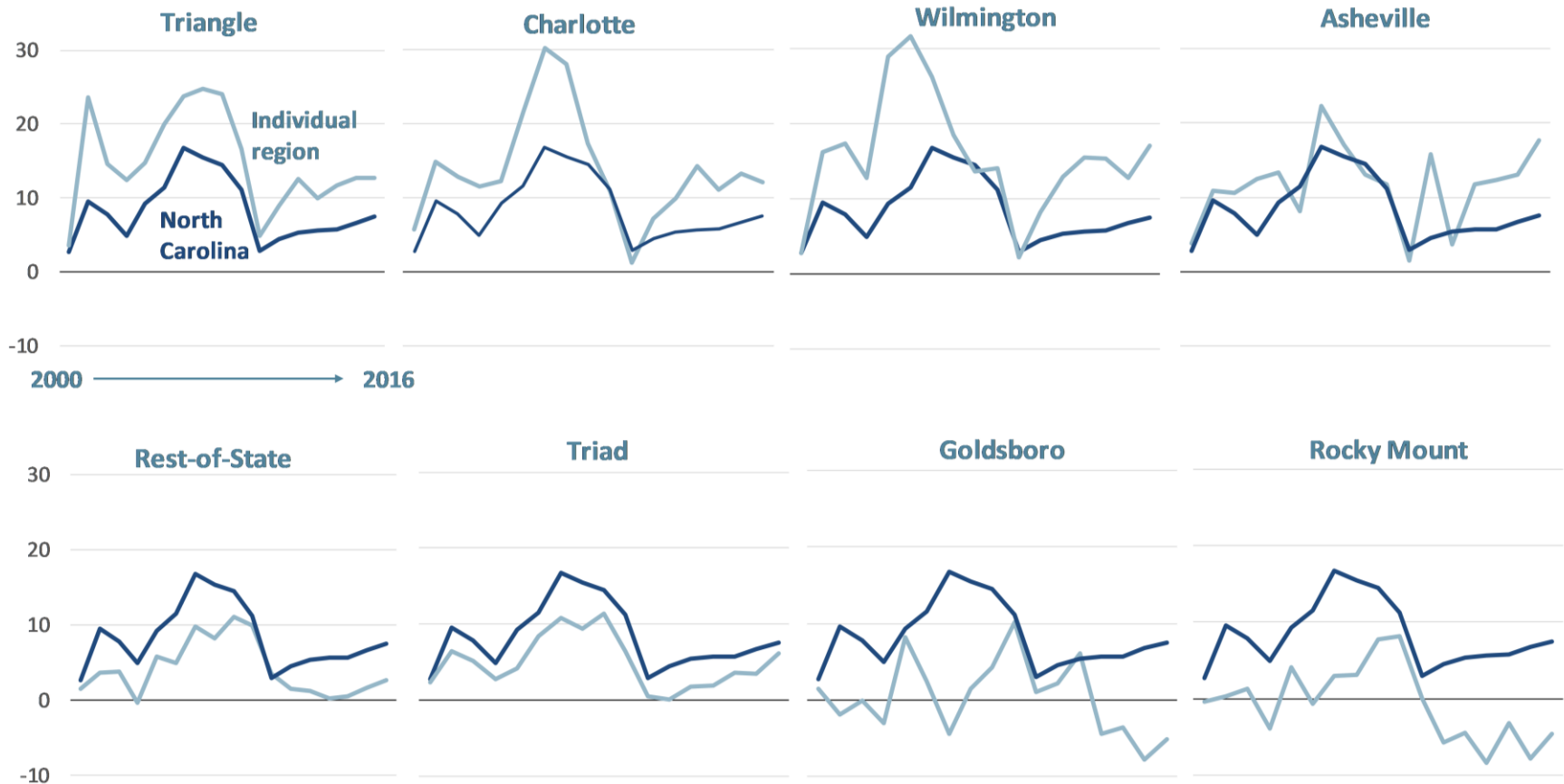
Source: U.S. Census Bureau, Population Estimates for States, Vintage 2017.



Migration (cont'd)

Net Migration Rising From Post-Recession Lows But Still Uneven and Below Pre-Recession Peak

Net migrants per 1,000 persons

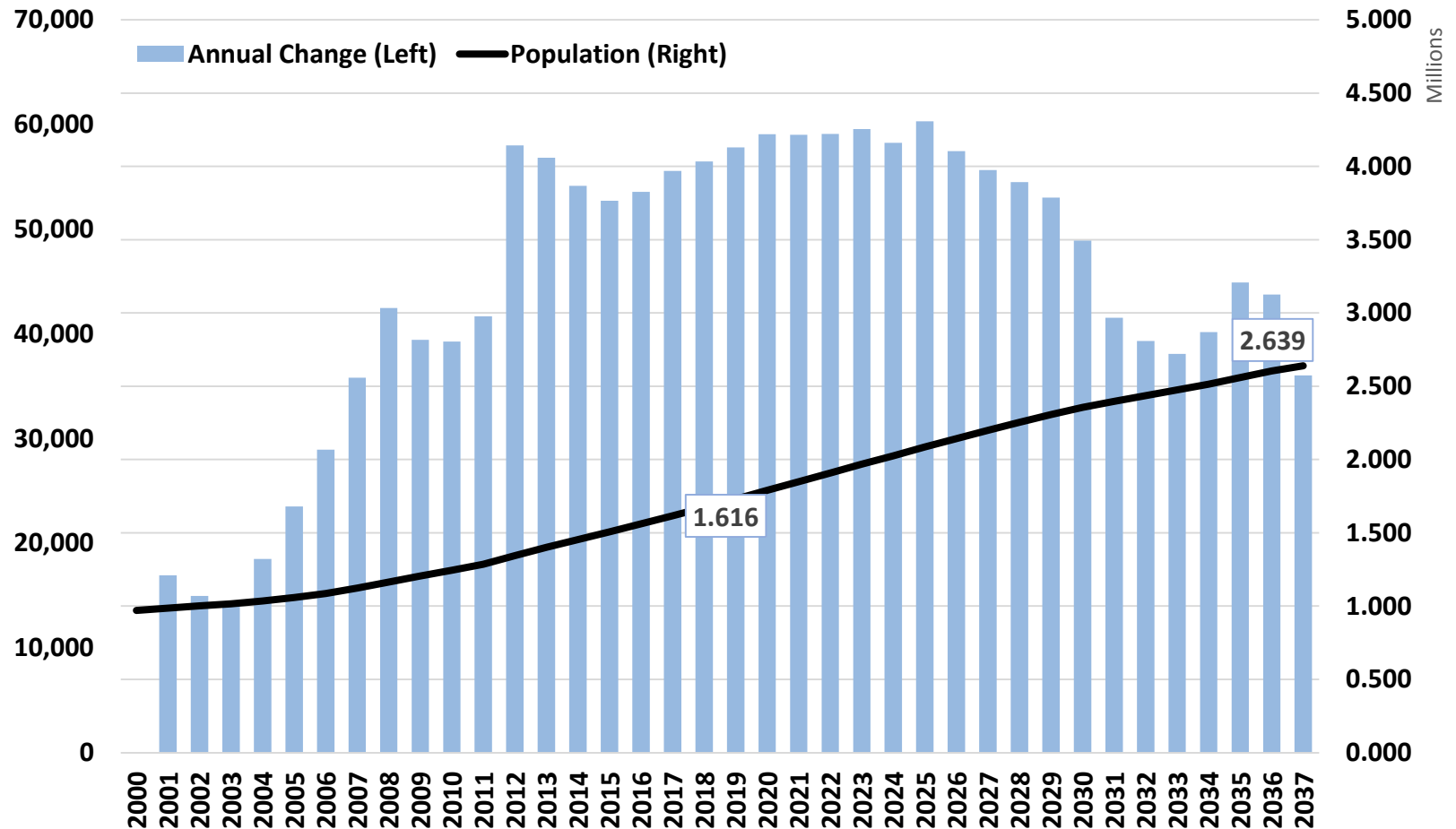


Data Source: OSBM Smoothed Historical Population Estimates, 2000–2010 and Certified and Revised Population Estimates, 2016 Vintage; Rest-of-state includes Hickory, Jacksonville, Burlington, and Fayetteville as well as non-metro areas



Aging of the Population

Change in the Population in Ages 65+, 2000-2037

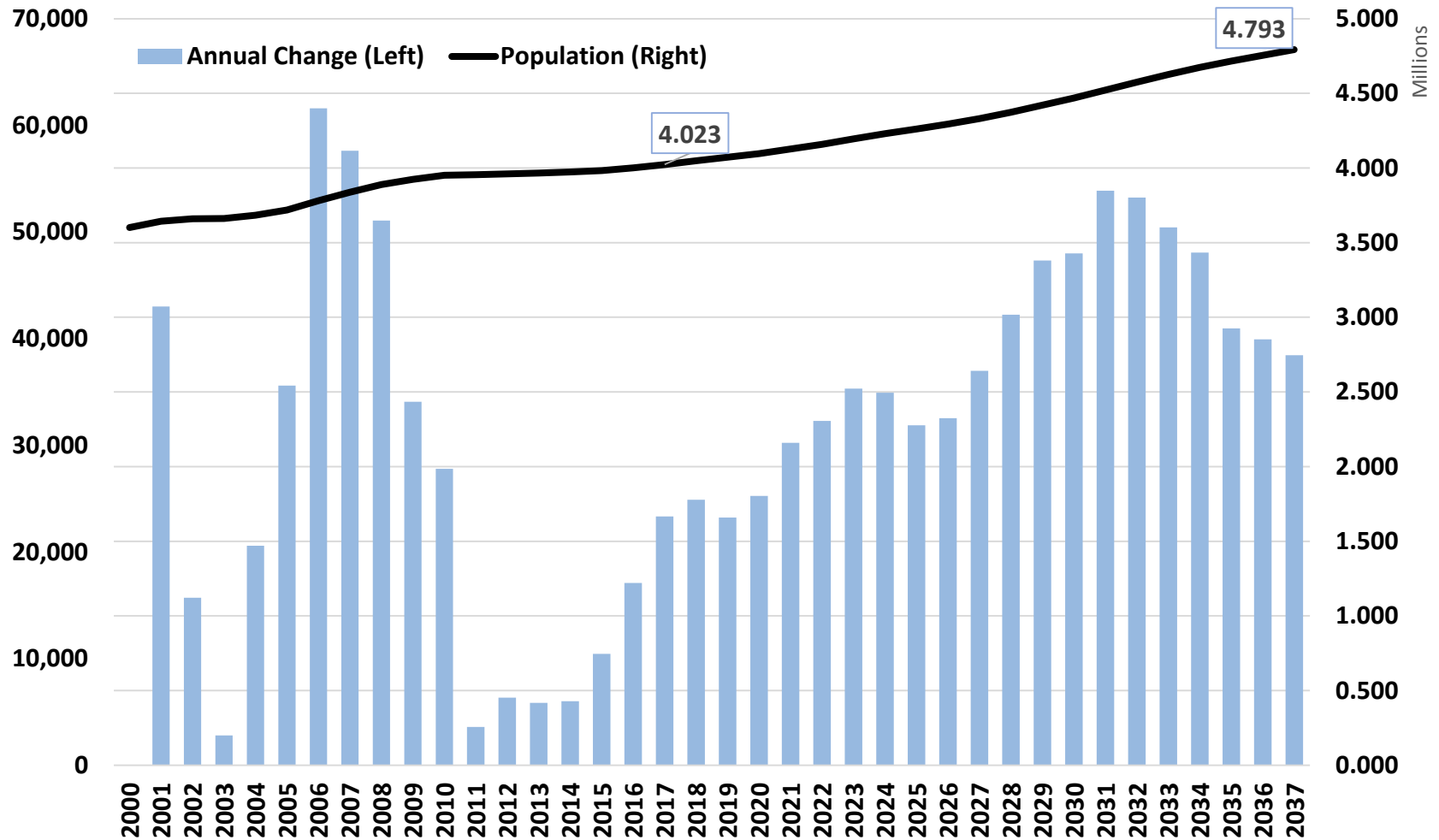


Source: NC OSBM, 2000-2016 Population Estimates and 2017-2037 Population Projections. Population as of July 1.



Aging of the Population

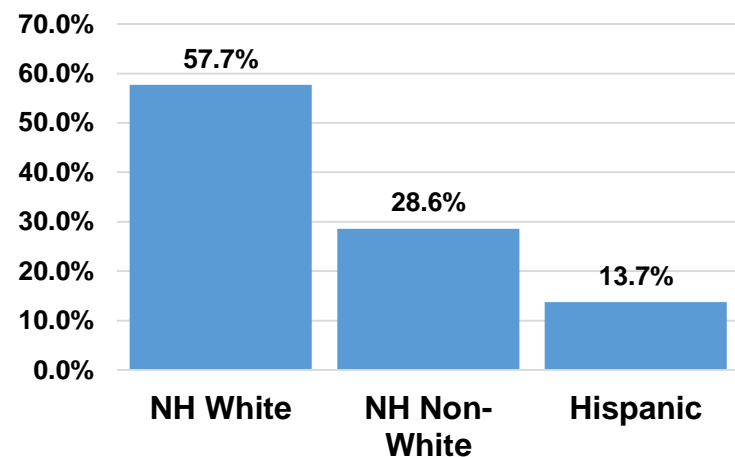
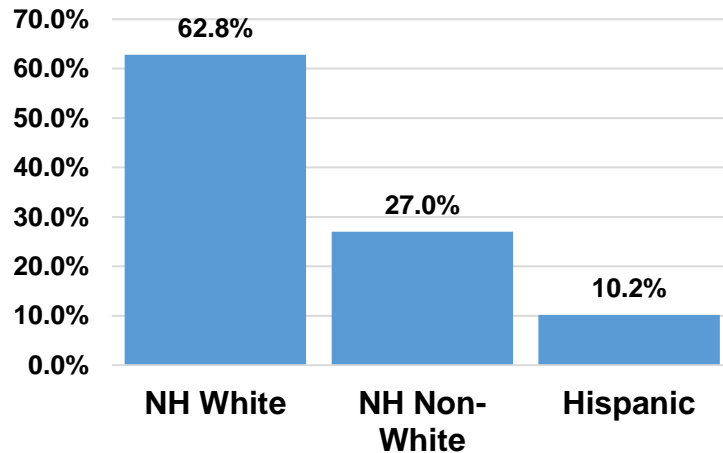
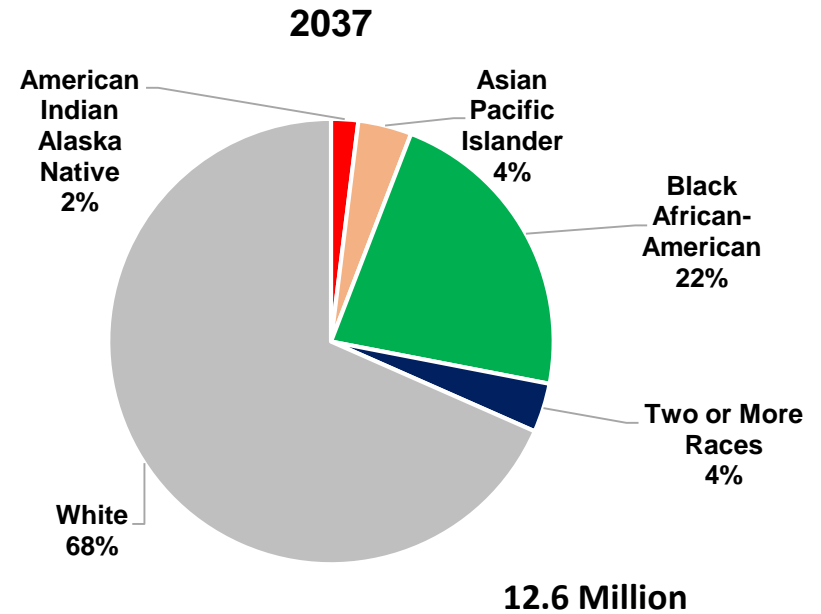
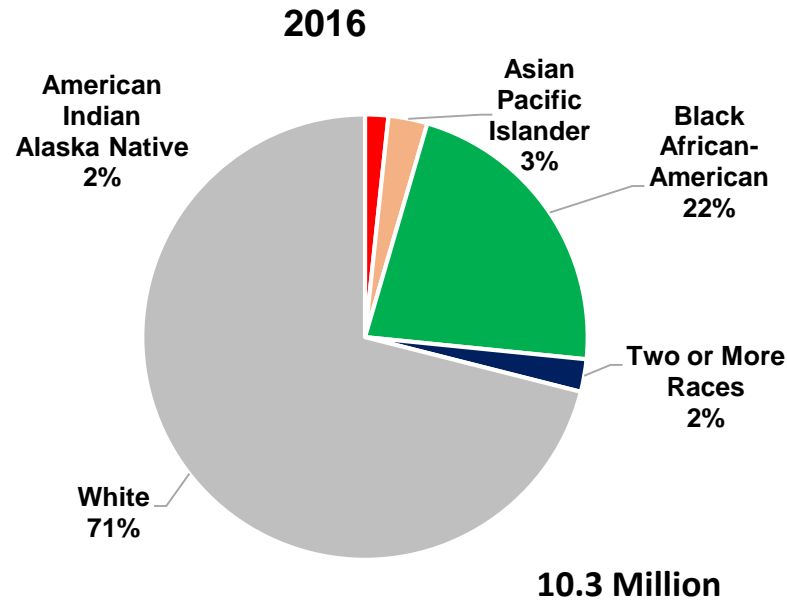
Change in the Population in Ages 25 - 54, 2000-2037



Source: NC OSBM, 2000-2016 Population Estimates and 2017-2037 Population Projections. Population as of July 1.



Population by Race and Hispanic Origin, 2016 and 2037





Fiscal Impacts of the Census (Annual)

\$16.3 Billion in Federal Dollars Distributed to North Carolina

Estimated amount of funds distributed to North Carolina based directly or indirectly on decennial Census statistics (16 largest federal programs).

- \$1,623 per capita

Source: George Washington University, [Counting for Dollars 2020](#)

\$1.5 Billion in State Funds Distributed to Municipalities & Counties

Estimated amount of funds distributed annually to North Carolina based upon OSBM certified population estimates (2 largest state revenue allocations).

- \$200 Per Capita

Source: North Carolina Dept. of Transportation, [2017 North Carolina State Street-Aid Allocations to Municipalities](#); North Carolina Dept. of Revenue, [Collections for Month Ending Reports for 2017](#).

ANNUAL ESTIMATES REQUIRE ACCURATE CENSUS COUNT!



Thank You!

Michael (Mike) E. Cline, PhD

State Demographer

Economic & Demographic Analysis Section

North Carolina Office of State Budget and Management

Michael.Cline@osbm.nc.gov

919-807-4756

For Municipal and County Estimates See:

<https://www.osbm.nc.gov/facts-figures/demographics>