

# N.C. Department of Public Safety Emergency Management

*“What have you done for the counties today?”*



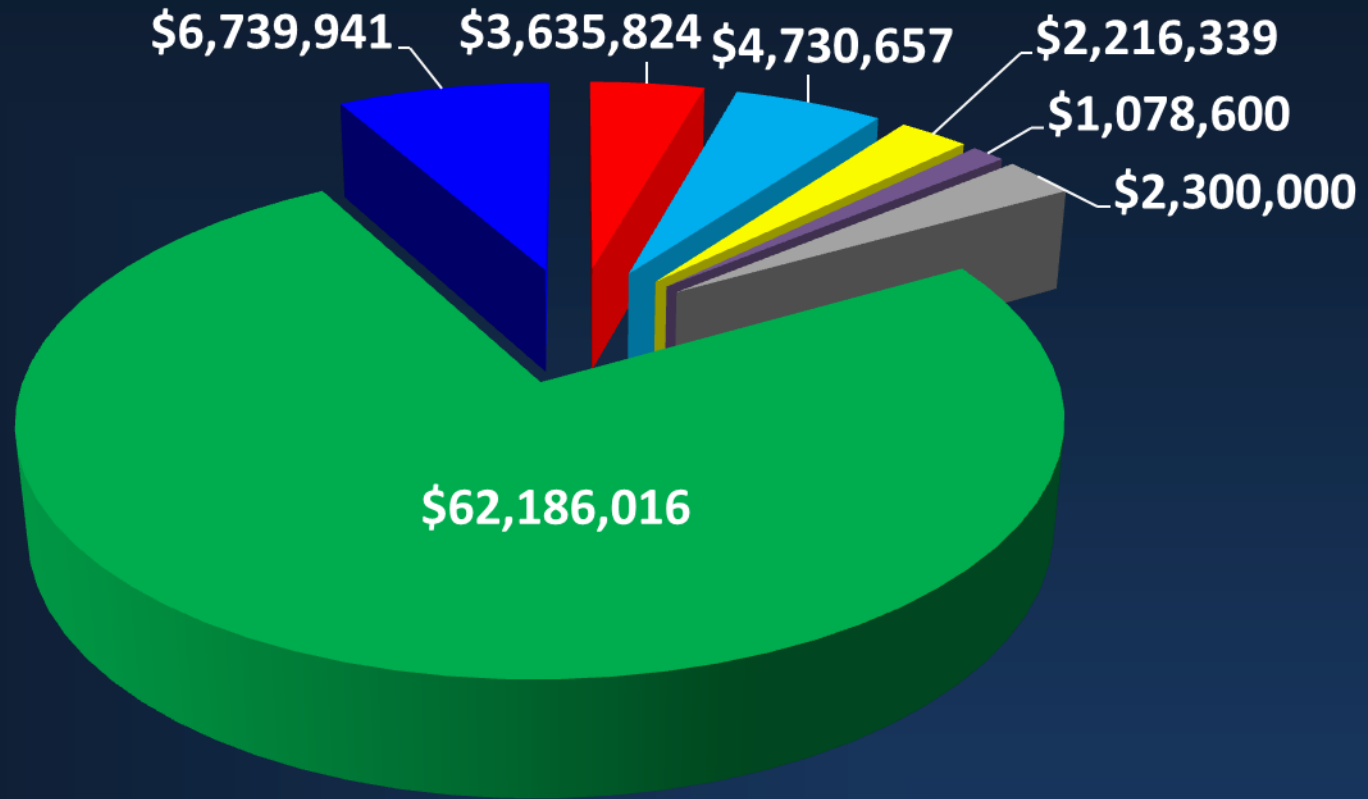
# NCEM at a Glance

---

- Housed within NC Department of Public Safety
  - NCEM Director reports to DPS Commissioner of Operations
- Homeland Security is included under NCEM
  - NCEM Director is Deputy Homeland Security Advisor
- 188 FTE / 17 part time
- \$82.9 M Annual Budget
  - State appropriations
  - Federal funds
  - Receipts



# How is EM funded?



- APPROPRIATIONS
- FIXED NUCLEAR RECEIPTS
- COAL ASH RESIDUAL FEE FUND RECEIPTS
- STATE RESPONSE & DISASTER RELIEF FUND

- FLOOD PLAIN MAPPING RECEIPTS
- HAZARDOUS MATERIALS FEE RECEIPTS
- FEDERAL (NON-DISASTER & DISASTER)



# SERT Director

Joint  
Information  
Center

Business  
Operations  
Center

Coal Ash  
Management  
Commission

**Fiscal**

## Logistics

Training  
Exercises  
Logistics support

## Plans

Homeland  
Security  
Radiological Safety  
Natural Hazards  
Technical Hazards

## Risk Management

Floodplain Mapping  
IT  
NFIP

## Operations

Field Staff  
24 Hour Center  
Emergency  
Services  
Human Services  
Civil Air Patrol

## Recovery

Individual Assistance  
Public Assistance  
Hazard Mitigation



# NCEM Priorities

---



# NCEM is National Leader

---

- Nationally Accredited Emergency Management Program
- Recognized for Enhanced Hazard Mitigation Plan
- Internationally recognized Search & Rescue Program
- Nationally recognized Coastal Region Evacuation & Sheltering Guide
- Cutting edge plans & tools enhance public safety
  - ✓ School Safety
  - ✓ Licensed Care Facilities
  - ✓ Dam Emergency Action Plans
  - ✓ Child Care Centers
  - ✓ Fuel Assurance
  - ✓ Mental Health
  - ✓ Flood Warning





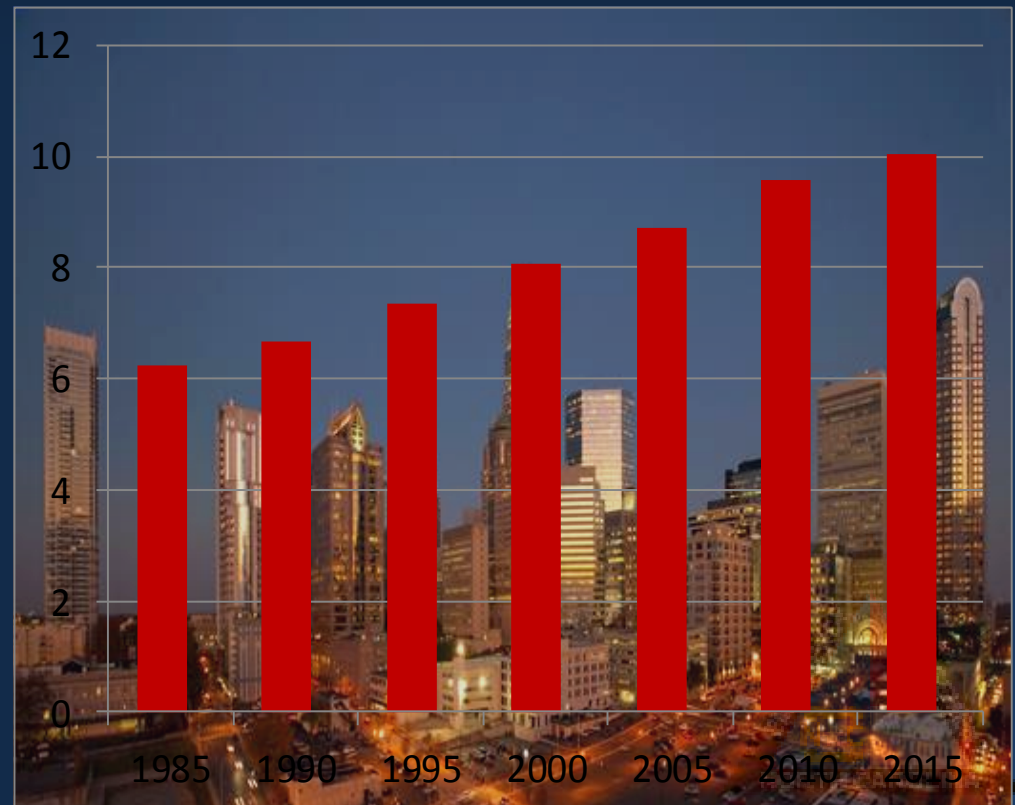
# North Carolina Growth

---

9<sup>th</sup> most populous state

10+ million people (Decade ago: 8.7 million 11<sup>th</sup>)

*Growing & aging  
population compounds  
challenges of disaster  
response & recovery*



# North Carolina by the Numbers

---

- **100** Counties
- **4** Nuclear Facilities that can effect NC
- Tribes: Eastern Band of Cherokee Indians
- **6** Metro areas
  - Charlotte
  - Raleigh - Durham
  - Greensboro - Winston-Salem – High Point
  - Rocky Mount- Wilson
  - Asheville
  - Wilmington
- **110** Colleges & Universities
  - 16 state universities
  - 58 community colleges
  - 36 private universities





# Concept of Operations

---

All **disasters start & end locally** and are managed on a daily basis at the closest possible geographical, organizational and jurisdictional level

**Commitment:** To provide a **four-tiered response** to any major disaster which is:

locally centered,

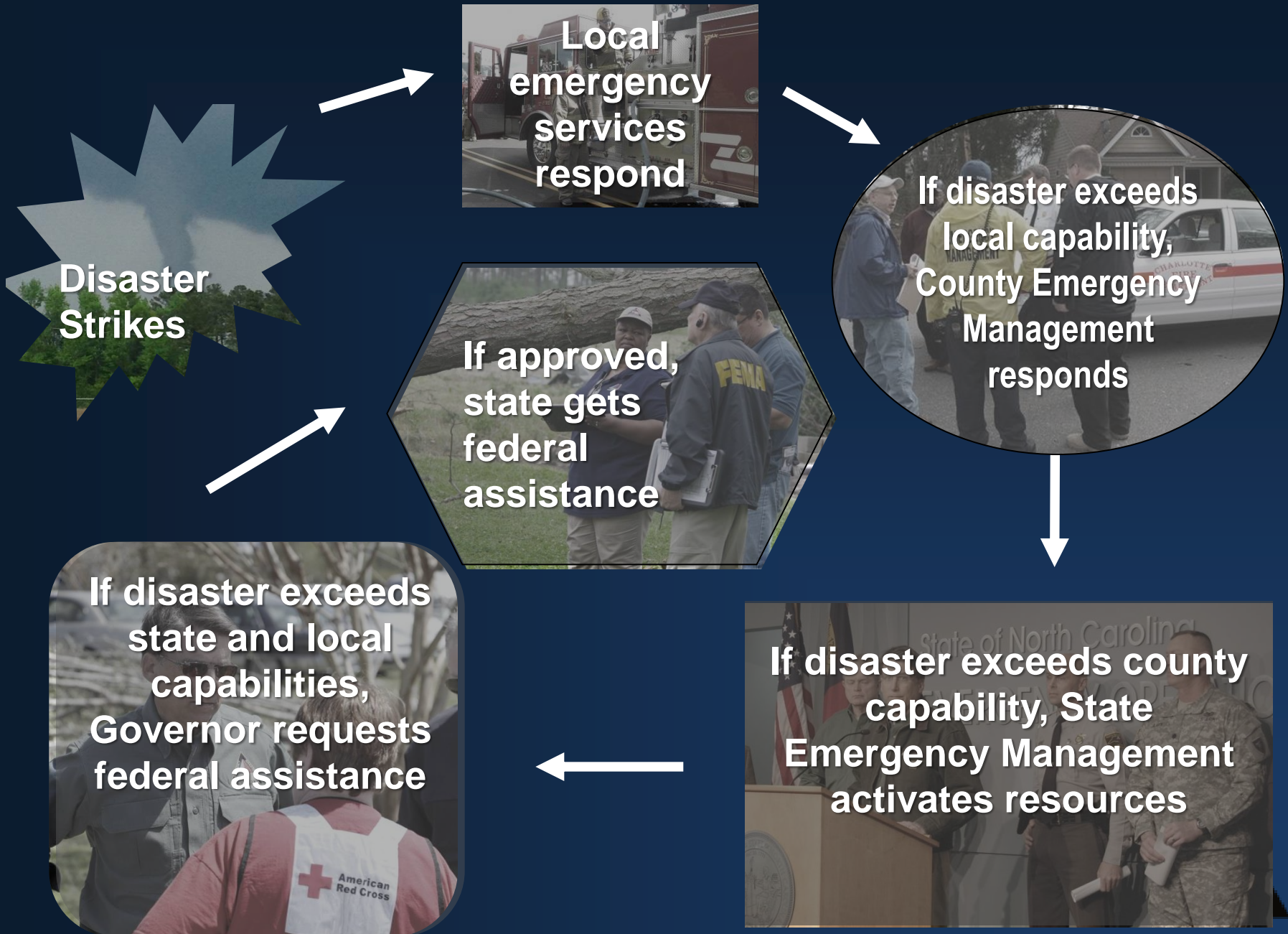
regionally augmented,

state backed

& federally assisted,

where all Counties have some capability to respond to significant events.

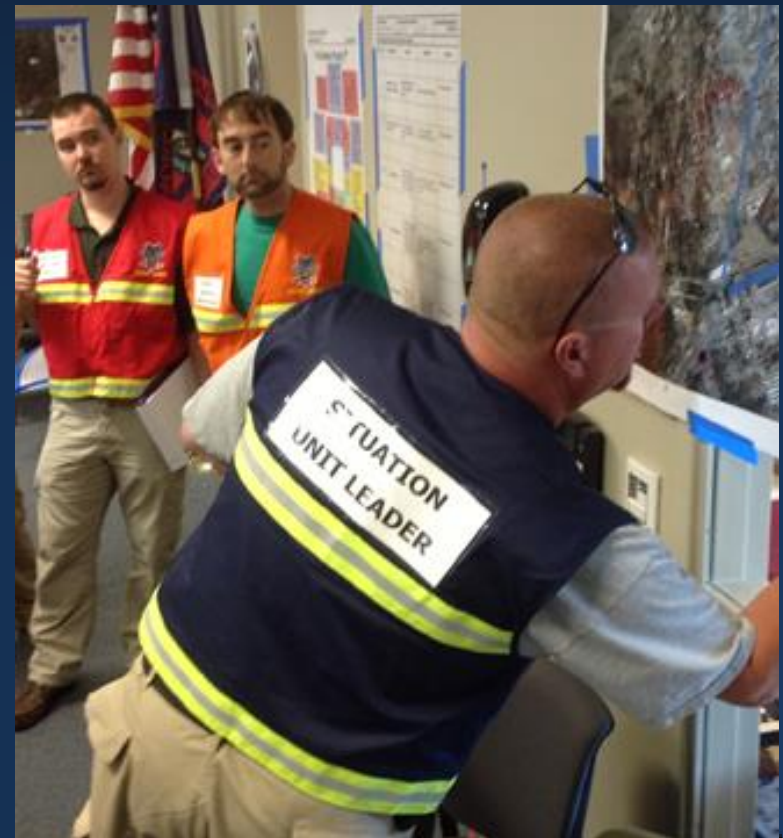




# Local Role

---

- Local governments (counties or municipalities) respond to daily emergencies
- Use own resources *OR*
- Use mutual aid (via agreements w/other jurisdictions)
- If beyond local capability, EM director can request state assistance
- Request made through NCEM



# State Role

---

- NCEM backs local governments
- Provides state resources such as SAR teams, RRT, staffing help, etc.
- Use mutual aid (via EMAC or agreements with other states)
- Provides training & funding support





# Federal Role

---

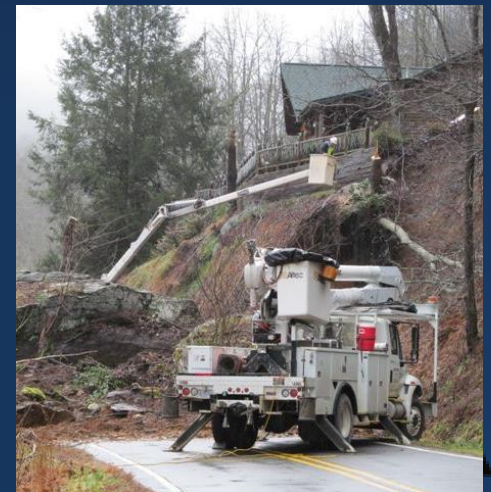
- If beyond state capability, governor can request federal assistance
- Request made through FEMA
- FEMA *may* pre-position with NCEM for large storms
- FEMA provides resources and funds for disaster response & recovery
- FEMA leads recovery efforts on federally-declared disasters



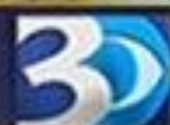
# Our role is consequence management

---

- ✓ Search and Rescue
- ✓ Provide Mass Care
- ✓ Protect Life and Property
- ✓ Provide Incident Management
- ✓ Supplement Local Resources
- ✓ Help Communities Recover







WBTV • ON YOUR SIDE

4:56 88°

WBTV.COM

## TEEN RESCUED FROM GORGE

UNVILLE, NC





**Explosion at Colonial Tank Farm in Greensboro**





RRT 1 Williamston,  
RRT 2 Greensboro & RRT  
7 Charlotte joined with  
USAR 6 Greensboro,  
USAR 10 Greenville &  
USAR 11 Wilmington  
to search for and rescue  
victims from the tornado  
outbreak in 2011.

# NC Threats & Hazards

---

- ✓ Hurricanes
- ✓ Winter Storms
- ✓ Tornadoes
- ✓ Floods
- ✓ Hazardous Material Spills
- ✓ Forest Fires
- ✓ Earthquake
- ✓ Transportation Accidents
- ✓ Water System Failures
- ✓ Missing Persons
- ✓ Drought
- ✓ Pandemic Flu
- ✓ Chemical /Biological Attack
- ✓ Nuclear Attack
- ✓ School Attack
- ✓ Infrastructure/System Failures
- ✓ Nuclear Power Issue
- ✓ Airplane Crash
- ✓ Animal Disease
- ✓ Food Contamination



# Actions During Emergencies

---

- ✓ Evaluate required resources
- ✓ Activate State EOC – including all SERT partners
- ✓ Dispatch requested state resources; coordinate & manage resources
- ✓ Governor declares a State of Emergency
- ✓ Notify FEMA re: EOC activities/level
- ✓ Establish County Receiving and Distribution Points
- ✓ Identify additional needed resources
- ✓ Use WebEOC, our critical incident management system
- ✓ Coordinate resources with other states
- ✓ Demobilize response & transition to recovery





# Activation Levels

---

Level 5 – Normal Operations

Level 4 – Local Event; some support

Level 3 – Partial Activation

Level 2 – Full Activation

Level 1 – Full Activation  
+ Federal Support



# Typical Mission Requests

---

- ✓ Auxiliary power
- ✓ Public / Functional needs shelter
- ✓ Food, water & ice
- ✓ Security & traffic control
- ✓ Search & rescue
- ✓ Debris clearance
- ✓ EMS & fire fighting



# Disaster Declaration Thresholds in SE US

---

State	Threshold
North Carolina	\$13,445,031
South Carolina	\$6,521,763
Georgia	\$13,659,591
Florida	\$26,509,847
Tennessee	\$8,948,008
Mississippi	\$4,183,889
Alabama	\$6,739,428
Kentucky	\$6,118,507

*Total uninsured losses must meet/exceed threshold to ask for federal financial assistance to offset cost to communities for emergency protective measures, facility repair and debris removal.*

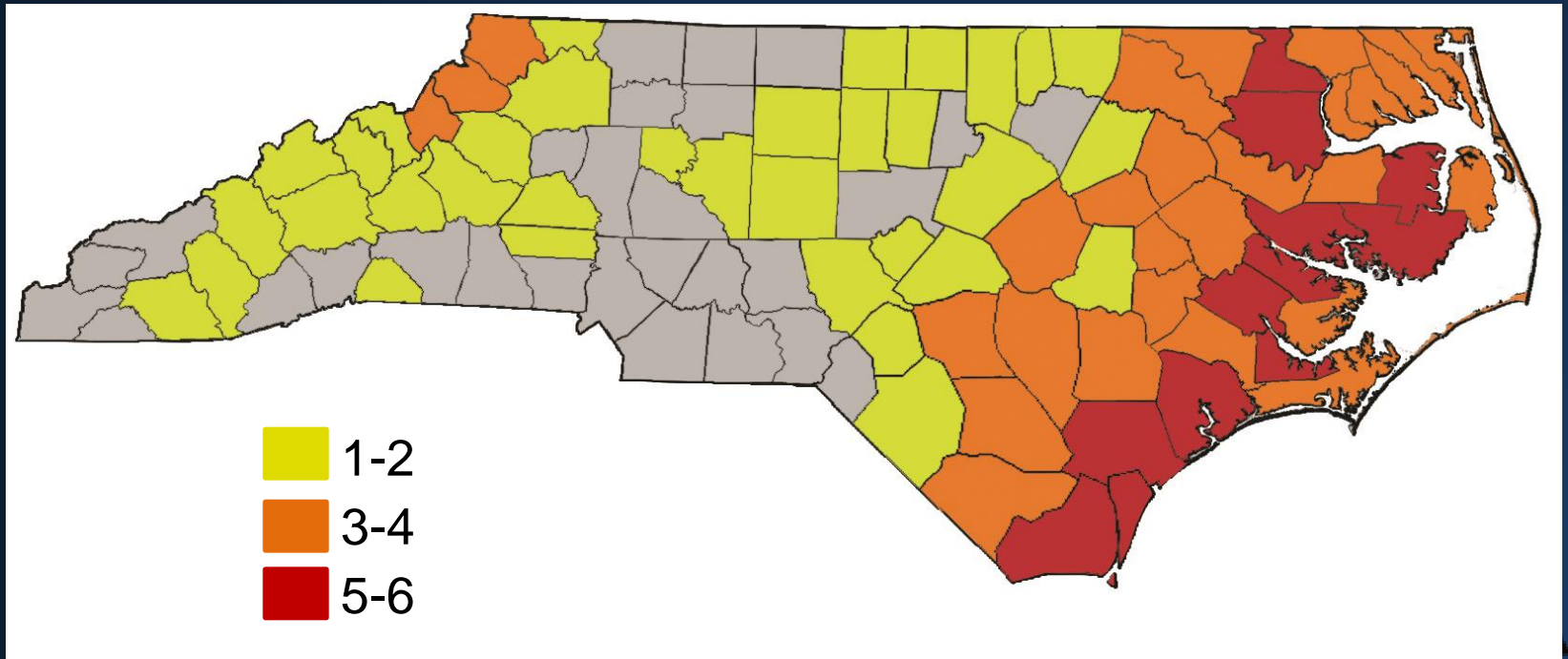




# Federal Disasters 2005-2015

---

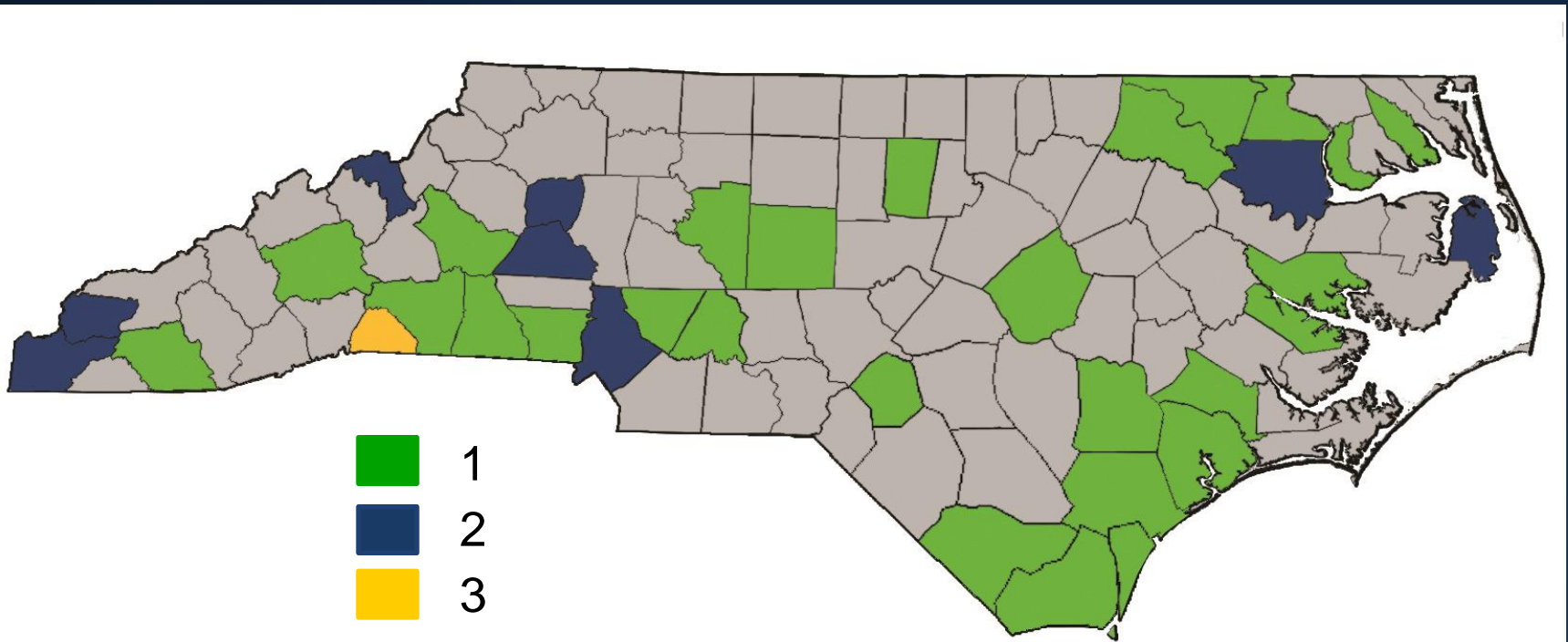
- 9 Disaster Declarations
- 4 Emergency Declarations
- 4 Fire Management Assistance Grants



# State Declared Disasters 2005-2015

---

## 27 State Declared Disasters



# Who pays for response? Who tracks costs?



# Regional Coordination Centers

---

- Liaise with counties
- Submit resource requests
- Provide staff support for counties

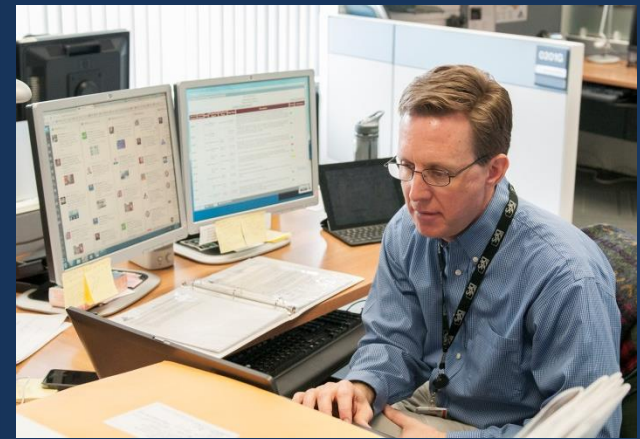




# Joint Information Center

---

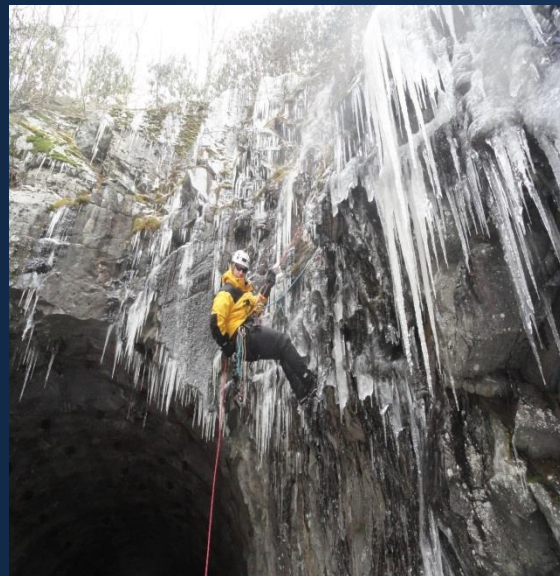
- Conduct media interviews
- Send safety messages to media
- Coordinates messaging among SERT partners
- Write/send news release
- Post to social media
- Host News Conferences



# Emergency Services

---

- Fire & Rescue
- Disaster Medical
- Law Enforcement
- Search & Rescue
- Hazardous Materials





# Human Services

---

- Shelters
- Mass Feeding
- Mental Health
- Public Health
- Public Water Supply
- Food Banks
- Animal Care





# Infrastructure

---

- Transportation
- Debris Removal
- Public Works
- Engineering
- Energy



# Logistics Operations

---

- Personnel & supplies
- Donations management
- National Guard resources
- Div. of Adult Corrections



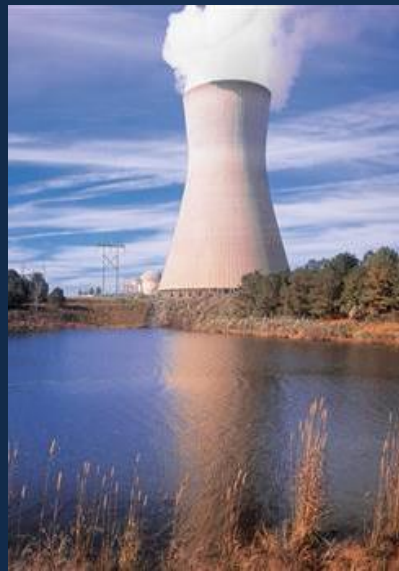
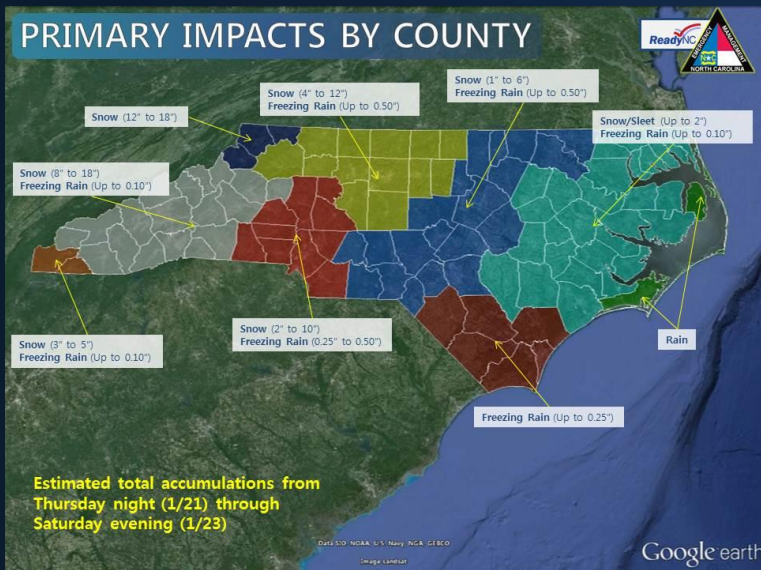
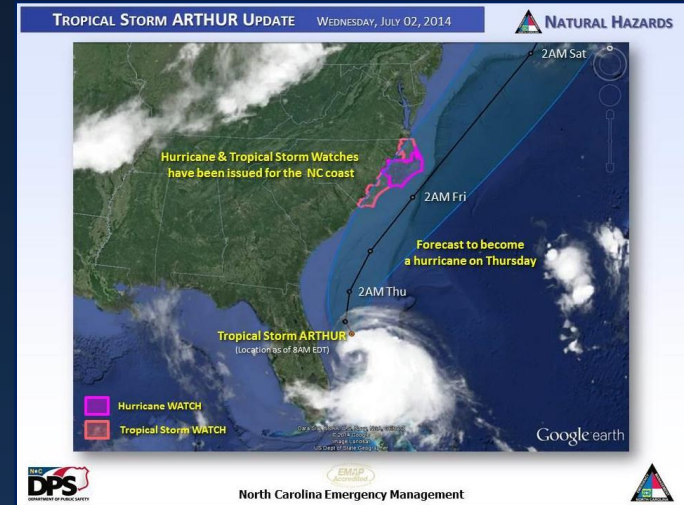
- Purchasing
- Services & equipment
- State-wide mutual aid
- EM Assistance Compact





# Plans & Homeland Security

- Disaster Planning
- Homeland Security
- Radiological Protection
- Collect Information
- Develop Situation Reports & Incident Action Plans
- Meteorology





# Recovery Section

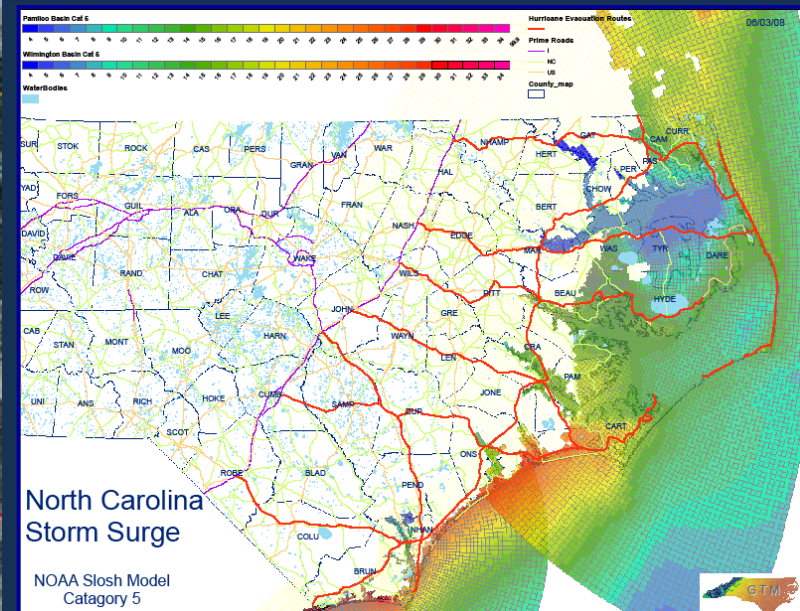
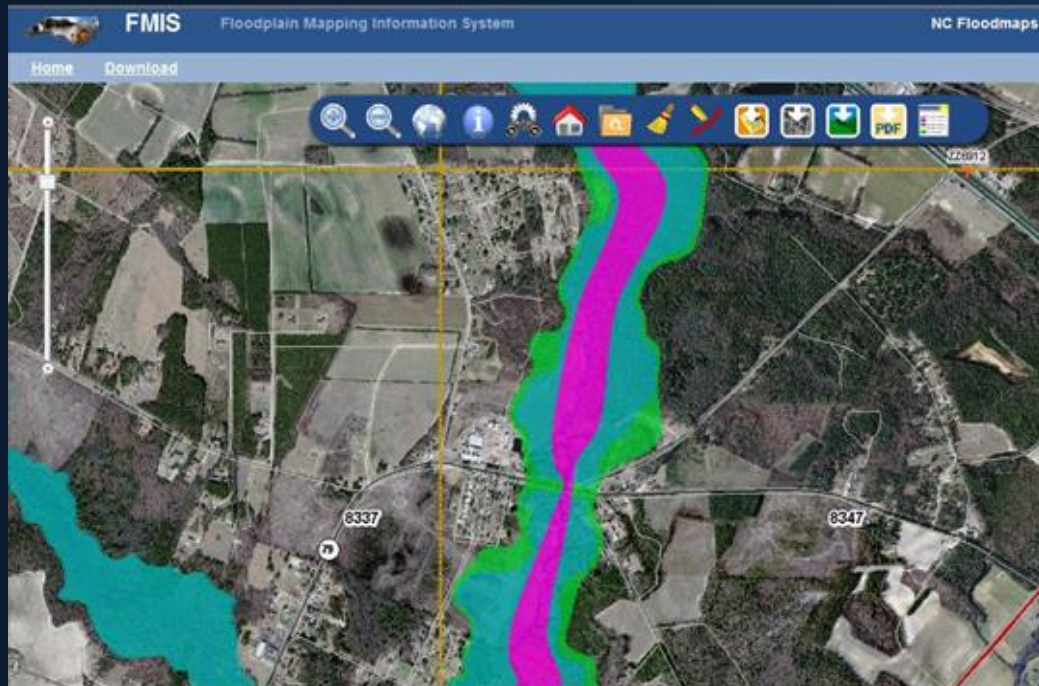
- Individual Assistance
- Public Assistance
- Hazard Mitigation





# Risk Management

- GIS Data Input
- Floodplain Mapping
- Flood Warning
- Geodetic Survey
- Web EOC





# SERT State Agencies

---

- **NCDPS** (Lead Agency) – *NCEM, Corrections, SHP, NCNG, ALE*
- **Administration** – *Purchase & Contract, Facility Mgmt.*
- **Insurance** – *Fire Marshal's Office, Building Inspections*
- **Labor** – *OSHA*
- **Agriculture** – *Food Safety, Animal Protection, Forestry, Crop Damage & Insurance*
- **Transportation** – *Debris Clearance, Road /Bridge Repair, Snow & Ice Removal, Hwy. Mgmt.*
- **Public Instruction** – *School Safety, School Buses*
- **Commerce** – *Economic Development, Retail Merchant's Association*
- **Health & Human Services** – *Public Health, Office of Emergency Medical Services, Mental Health, Social Services (Shelters), Radiation Protection*
- **Environment & Natural Resources** – *Air and Water Quality, Public Water Supply, Dam Safety, Landslides*
- **Cultural Resources** – *Historic Sites, Museums*
- **NCSU** – *Coop. Extension – Agriculture Advice, Support to Disaster Impacted Communities*





# SERT Volunteers

---

- ✓ American Red Cross
- ✓ Salvation Army
- ✓ Amateur Radio
- ✓ Telephone Pioneers
- ✓ Food Banks
- ✓ Hearts with Hands
- ✓ State Bar
- ✓ United Way
- ✓ Lutheran Disaster Response
- ✓ Mennonite Disaster Services
- ✓ Catholic Social Ministries
- ✓ N.C. Baptist Men
- ✓ Adventist Disaster Response
- ✓ Volunteer Administrators
- ✓ ....and many others





# All Disasters are *NOT* Equal

---

## Type 1

- Smaller, localized
- State responds without federal assistance
- Usual cost share: state 75%, local 25%
- Examples:  
East NC tornadoes 2014  
West NC flooding 2013

## Type 2

- Larger damage area (several counties)
- Federal assistance needed
- Usual cost share: FEMA 75 %, state 25%
- Examples:  
April 2011 tornadoes,  
Hurricane Irene in 2011

## Type 3

- Widespread, catastrophic damage
- Federal assistance needed
- Usual cost share range: FEMA 75-90% state 10-25%
- Example:  
Hurricane Floyd in 1999



# Emergency Management Needs

---

## *Salary Upgrade*

19% turnover rate for Core EM Positions

23% lower pay than market rate

## *IT Exemption*

Need IT Staff on site for response readiness

## *USAR Funding*

7 teams will match \$ for \$

Use Disaster Reserve Fund up to \$2M



# NCEM Operational Readiness

---

Readiness Status is

**GREEN**





# Are You Ready?

