

Forestry & Fire Report



© John Cayton 2016

Forestry & Fire Report

PRESENTED BY SCOTT BISSETTE
ASSISTANT COMMISSIONER
N.C. FOREST SERVICE



Forestry & Fire Report

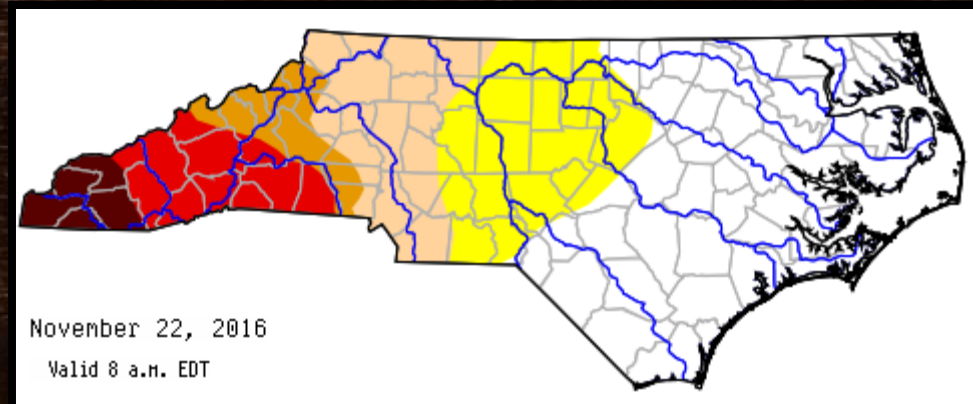
DROUGHT

Bans on open burning:

- November 7th – A ban on open burning was issued for the 25 most western counties in the state
- November 21st – the ban was extended for an additional 22 counties as the drought moves eastward

Mountain Drought – Up until last week, Western North Carolina has had little precipitation this fall leading to a drought situation. As of November 22 the following counties were in:

- Exceptional drought (5 counties) - Cherokee, Clay, Graham, Macon, Swain
- Extreme Drought (10 counties) - Buncombe, Cleveland, Haywood, Henderson, Jackson, Madison, McDowell, Polk, Rutherford, Transylvania
- Severe Drought (8 counties) – Avery, Burke, Caldwell, Gaston, Lincoln, Mitchell, Watauga, Yancey
- 15 counties were in a moderate drought
- 19 counties were considered abnormally dry



Forestry & Fire Report

AVIATION RESOURCES AS OF NOVEMBER 29TH

Fires or Fire Complexes	9	Federal Aviation Assets in North Carolina	
Incident Management Teams	Type (1) = 2 Type (2) = 4 Type (3) = 1	Helicopters	Type (1) = 3 Type (2) = 2 Type (3) = 4
Total Acreage	63,500	Air Attack	5
Personnel	2,474	SEATS Single Engine Air Tanker	8
The above-listed statistics represent only active, staffed fires in North Carolina and totals are compiled from 209 information and fire PIOs. Complexes are counted as a single fire.			



In addition to the federal assets, the N.C. Forest Service had its aviation resources battling wildfires.



Forestry & Fire Report

FIRES & COMPLEXES UNDER U.S. FOREST SERVICE

HORTON FIRE (NCFS – BLOWING ROCK, WATAUGA COUNTY)

Acreage: 1,450 — Personnel: 50 — Start Date: November 21

CLEAR CREEK FIRE (NCFS / USFS – MARION, MCDOWELL COUNTY)

Acreage: 3,163 — Personnel: 411 — Start Date: November 20

BOTELER FIRE (USFS—CHUNKY GAL AREA, CLAY COUNTY)

Acreage: 9,036— Personnel: 260 — Start Date: October 25

MAPLE SPRINGS FIRE (USFS—LAKE SANTEELAH AREA, GRAHAM COUNTY)

Acreage: 7,788 — Personnel: 105 — Start Date: November 4

CAMP BRANCH FIRE (USFS – OTTO, MACON COUNTY)

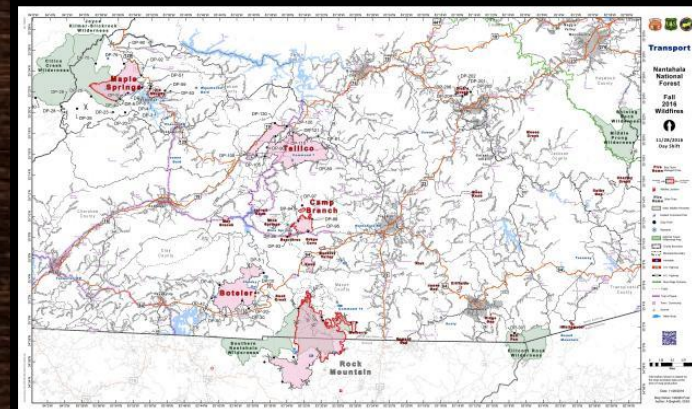
The Southern Area Blue Team on the Boteler Fire is managing this fire.

Acreage: 3,210 — Personnel: 293 — Start Date: November 23

NANTAHALA BRANCH FIRES

(USFS—CHUNKY GAL AREA, CLAY COUNTY)

The Southern Area Blue Team is assigned management of the Nantahala Branch Fires. Under this branch, the fires being patrolled/monitored are: Tellico Fire, Old Roughy Fire, Buck Creek Fire, Falls Fire, Grape Cove Fire, Moses Creek Fire, Jones Gap Fire, Jarrett Knob Fire, Wine Spring Fire, Mulberry Fire, Moss Knob Fire, May Branch Fire, Boardtree Fire, Charley Creek Fire, Nick Fire, Ridge Gap Fire, Ferebee Fire, Cliffside Fire, Whitewater Fire, Howard Gap Fire, Knob Fire, Muskrat Fire, Bullpen Fire, Jones Creek Fire, Cathey Gap Fire, Dick's Creek Fire.



Forestry & Fire Report

FIRES ON STATE PROTECTED LANDS AND THOSE THREATENING NORTH CAROLINA

PARTY ROCK FIRE (NCFS—LAKE LURE AREA, RUTHERFORD, BUNCOMBE, AND HENDERSON COUNTIES)

Acreage: 7,145 — Personnel: 177 — Start Date: November 5

CHESTNUT KNOB FIRE (NCFS—SOUTH MOUNTAINS STATE PARK, BURKE COUNTY)

Acreage: 6,435 — Personnel: 139 — Start Date: November 6

PINNACLE MOUNTAIN FIRE (SCFS/USFS/NCFS – PICKENS AND TRANSYLVANIA COUNTIES)

Acreage: 10,560 — Personnel: 316 — Start Date: November 9

**ROCK MOUNTAIN FIRE (USFS – SOUTHERN NANTAHALA WILDERNESS AREA, NORTH GEORGIA AND CLAY
AND MACON COUNTIES IN NC)**

Acreage: 24,725— Personnel: 668 — Start Date: November 9



Forestry & Fire Report

PARTY ROCK FIRE

- The fire began November 5, 2016 on Chimney Rock State Park land about 1 mile north of Lake Lure.
- On November 9, 2016 command was turned over to the N.C. Forest Service Brandon Incident Management Team.
- A Type I Team from the Oregon Department of Forestry assumed command of the fire on November 23, 2016.



More than 7,100 acres burned and over a thousand homes were threatened and thousands evacuated.



Forestry & Fire Report

CHESTNUT KNOB FIRE

- This fire began on November 6th, in South Mountains State Park.
- The fire is 6,435 acres in steep terrain.
- A North Carolina State Park assessment team continues determining damages from the fire to trails and other areas of the park.



Forestry & Fire Report

PINNACLE MOUNTAIN FIRE & ROCK MOUNTAIN FIRE



The Pinnacle Mountain Fire began on November 9th in South Carolina's Table Rock State Park. The fire was 10,560 acres. The N.C. Forest Service worked hard to keep much of this south of the border.



The Rock Mountain Fire began in the Straw Mountain area of Georgia on November 9th. It has grown to 24,725 acres, including onto private lands in North Carolina.



Forestry & Fire Report

WHAT COULD'VE BEEN

- The Chimney 2 Fire was reported in Great Smoky Mountains National Park near Gatlinburg, TN on Wednesday, November 23, 2016. It is currently 15,653.
- On Monday, November 27th, drought conditions and extreme winds caused the wildfire to grow rapidly.
- On November 29th the fire took its toll on the community of Gatlinburg Tennessee, damaging and destroying more than 250 buildings, and taking the lives of fourteen civilians.



Forestry & Fire Report

HELP COMES FROM ACROSS THE NATION

At one point there were more than 2,500 personnel battling wildfires in North Carolina from more than 40 states across the nation, including from as far away as Alaska. This is in addition to our own folks, emergency management, and the invaluable assistance of the volunteer fire fighters who came from across the state.



Forestry & Fire Report

THE COST OF FIGHTING WILDFIRES

More than \$51 million has been spent on fighting wildfires burning in North Carolina. The state has incurred a cost of more than \$22.5 million.




Forestry & Fire Report

SCOTT BISSETTE
ASSISTANT COMMISSIONER
NORTH CAROLINA FOREST SERVICE
OFFICE: 919-857-4844
SCOTT.BISSETTE@NCAGR.GOV

Questions?



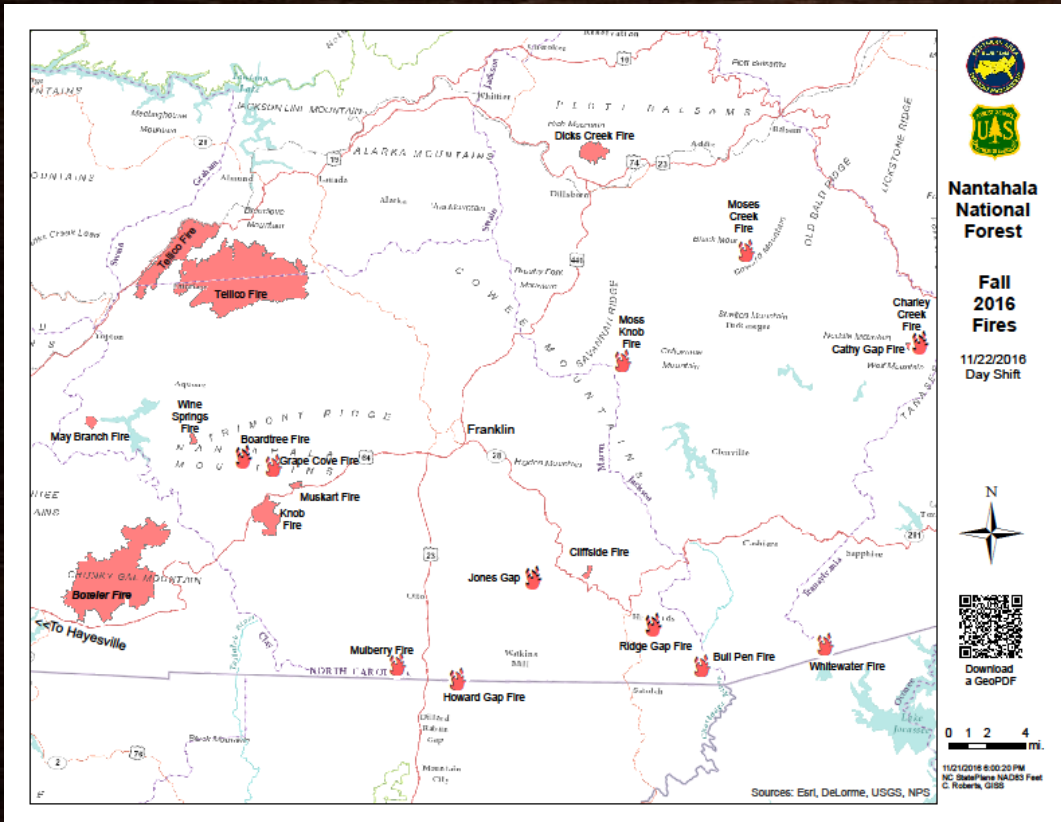
A firefighter in a dark uniform and helmet is seen from behind, standing in a forest at night. The firefighter is holding a tool, possibly a chainsaw or axe, and is looking towards a bright fire burning in the distance. The fire is illuminating the surrounding trees and the ground. The scene is dark, with the fire providing the primary light source.

North Carolina 2016 Fall Wildfire Season

PERSPECTIVE FROM AN
INCIDENT COMMANDER

KEVIN HARVELL
PIEDMONT DIVISION DIRECTOR
NORTH CAROLINA FOREST SERVICE

Boteler and Nantahala Fires

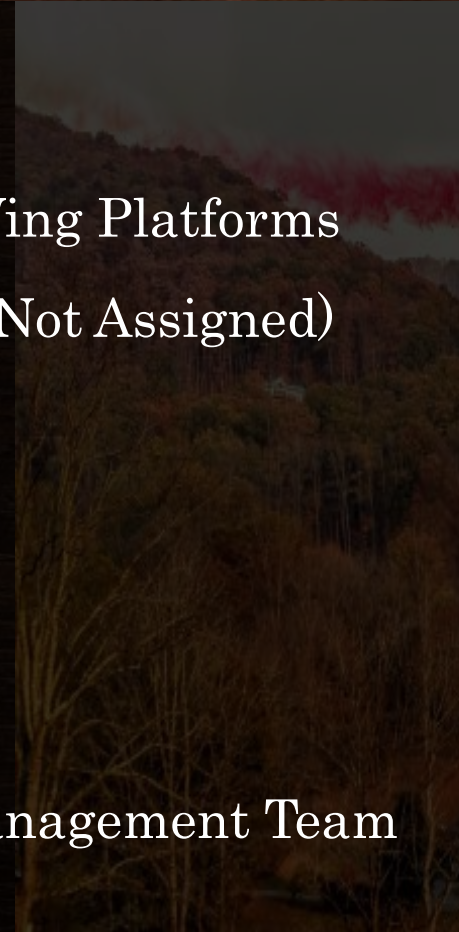


- Responsible for all Extended Attack Fires – Macon & Jackson Counties and part of Clay and Swain Counties
- 10 Large Fires (100+ acres)
- 21 Named Fires
- Numerous Initial Attack



Equipment and Resources

- 6 Helicopters
 - 3 Type I
- 2 Air Attack Fixed Wing Platforms
- 2 Large Airtankers (Not Assigned)
- 25 Hand Crews
- 16 Bull Dozers
- 63 Engines
- 900+ Firefighters
- 1 Type I Incident Management Team (60 People)



Successes



- NO HOMES LOST
- No Serious Injuries to the Public or Firefighters
- Integrated Local Emergency Management into the Team (War Room)
- NC HEART Helicopter
- Baptist Men
- Local Health Department at ICP
- Community Meetings



Opportunities

- Housing and Feeding of Firefighters
- Use of Social Media to Communicate with the Public
- Reverse 911 (2nd Home Communities in WUI)
- Incorporation of Local EM at IMT In-Briefing
- After Action Review / Long Range Planning at Local and State Levels



A photograph of a large fire burning on a forested mountain at night. The fire is intense, with bright orange and yellow flames rising from the trees. The mountain is dark, and the fire is the primary light source. In the foreground, there is a calm lake reflecting the fire. A small gazebo with a white roof and pillars is situated on the shore of the lake. The sky is dark, and the overall scene is dramatic and somewhat ominous.

Questions?

© John Cayton 2016