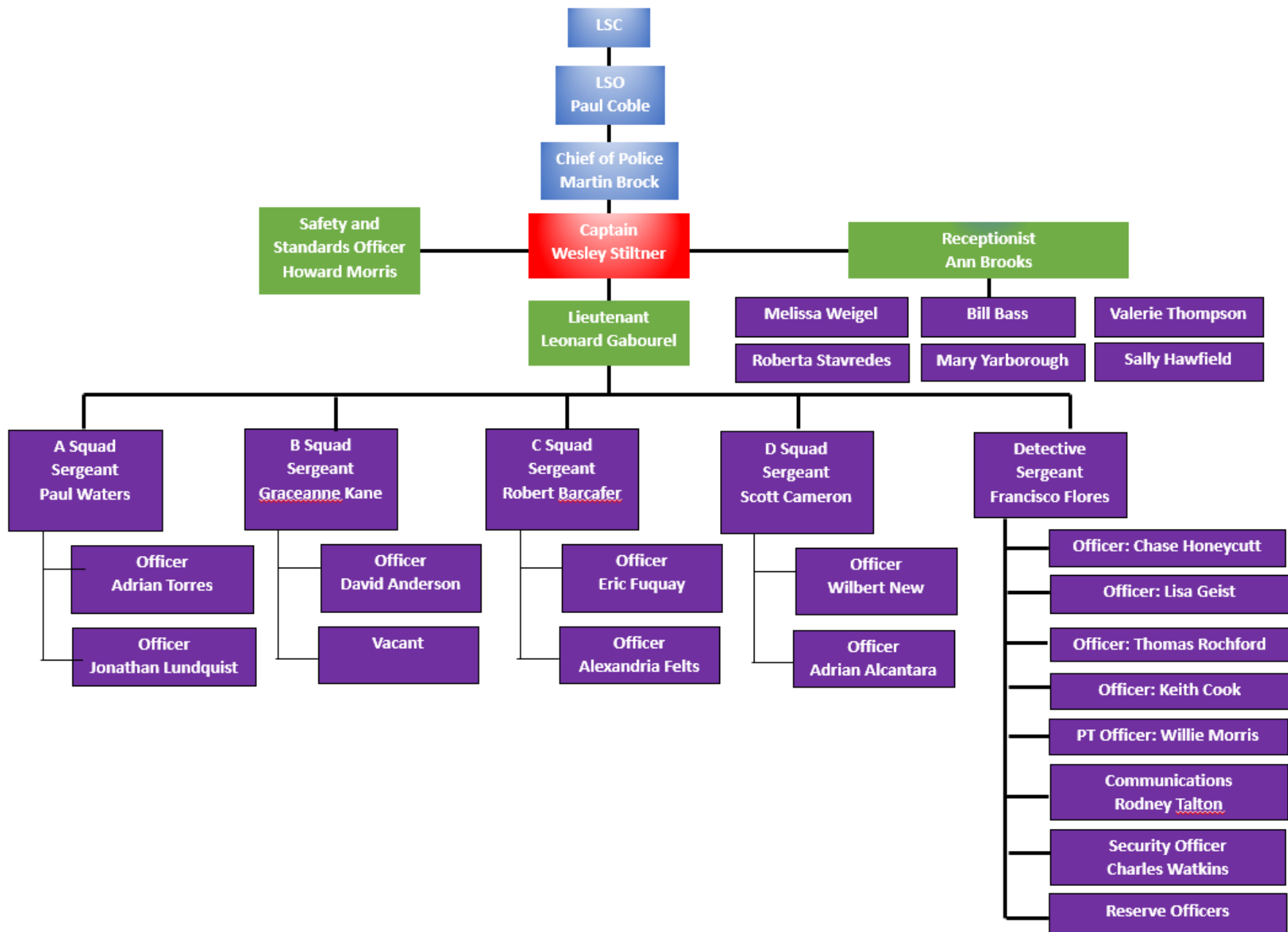




# **NC General Assembly Police Agency Overview By Chief Martin Brock**



# Captain

- *Serves as the Chief's designee*
- *Manages all departmental administrative duties*
- *Manages and oversees departmental purchasing and budgeting*



# Lieutenant

- *Manages and oversees all departmental patrol duties and functions*
- *Supervises four Shift Sergeant's and one Detective Sergeant*
- *Manages and oversees all departmental EMT functions*
- *Serves as the department A-TAC for DCI functions*



# Detective Sergeant

- *Conducts criminal investigations or threats of physical violence against the General Assembly, a member or staff of the General Assembly, or their immediate family.*
- *Serves as the departmental training coordinator*
- *Coordinates with other law enforcements agencies concerning intelligence matters*
- *Conducts background investigations on central and partisan staff (by request)*





# Shift Supervisors and Security Officers

## Shift Sergeant

- *Oversees the daily patrol duties and tasks for all patrol officers and security officers*
- *Responsible for providing twenty-four hour supervisory coverage*

## Police Officers and Security

- *Perform basic law Enforcement and Security functions*



# **Applicable Statutes Defining Law Enforcement Role(s):**

- § 120-32. Legislative Services Commission identifies needed staff
- §120-32.1(a)(3) -- LSC responsible for providing security for the legislative building and grounds
- §120-32.2 – General Assembly police jurisdiction and authority and roles defined



# General Assembly Police Training

- *All certification and mandated requirements*
- *Explosives*
- *Respond to Active Shooter*
- *Executive protection*
- *Medical response*

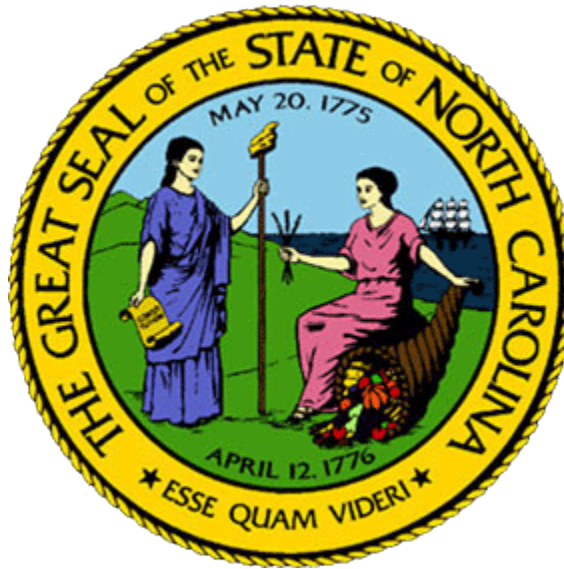




# General Assembly Police

- *Protest Management and Crowd Control*
- *Background Investigations*
- *Threat management*
- *Hundreds of hours of applicable training through the Community college(s), Justice Academy, and Homeland Security*





# ***E*mergency *N*otification *S*ystem**

**North Carolina General Assembly**

***System is currently being updated***

# Emergency Notification System



Shooter/  
Lockdown



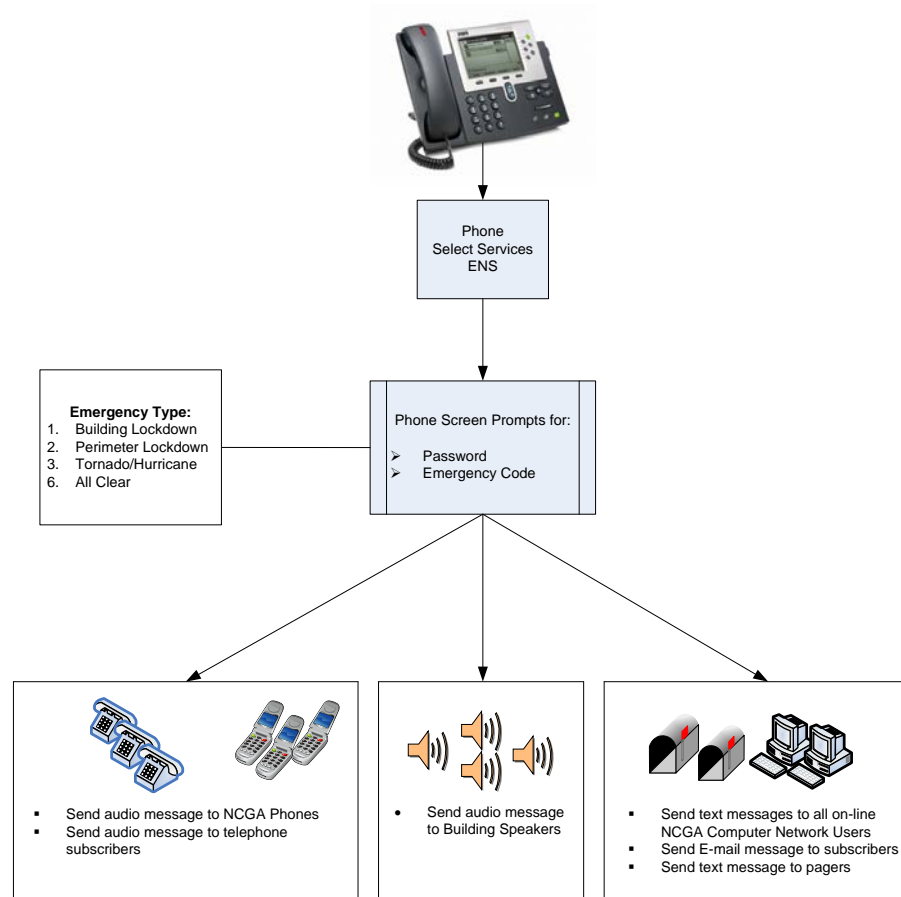
Tornado/Hurricane



Perimeter Lockdown

## NCGA Police

Determine the Emergency Type



## **Building Lockdown Procedure**

- **Purpose**
- **Procedures**
- **General Assembly Police Actions**
- **Legislative Personnel Duties**
- **Important reminders / information**
- **The lockdown announcement and subsequent information**

This is an emergency. The building will go to LOCKDOWN immediately. Repeat: The building will go to LOCKDOWN immediately. Employees and visitors are to proceed to the nearest office or committee room to seek shelter. Close and lock your doors. Ignore all alarms unless notified by the General Assembly police.

## **Building Lockdown Procedure**

- **Purpose**
- **Procedures**
- **General Assembly Police Actions**
- **Legislative Personnel Duties**
- **Important reminders / information**
- **The lockdown announcement and subsequent information**





An ALL CLEAR has been issued by the Legislative Emergency Notification System. Once again, an ALL CLEAR has been issued by the Legislative Emergency Notification System.

# ***E***mergency ***N***otification ***S***ystem

## ***ENS*** Alert Subscription



Pager



Cell phone / Telephone



E-mail


# INSIDE INFO

NC General Assembly Intranet Web Site

Internet Employees Resources Help

78°F / 26°C 08:10  
 Weather Underground

 [PRINTABLE VERSION](#)

## EMERGENCY NOTIFICATION SIGN-UP

### Notification Options for Dennis McCarty

Notification Type	Notification Details	Action
Non-NCGA Email ex. bill@nc.rr.com	<input type="text"/>	<input type="button" value="Subscribe"/>
Voice Call ex. 919-123-4567	<input type="text"/>	<input type="button" value="Subscribe"/>
Text Message ex. 919-123-4567	<input type="text"/> <input type="button" value="Select a carrier.."/>	<input type="button" value="Subscribe"/>

[DISCLAIMER](#) \* [PRIVACY STATEMENT](#) \* [POLICIES](#)

# Other Emergency Notifications

## ➤ **Duress Alarms**

- *Each member office has a duress alarm button*
- *For your safety of Member, LA, and medical emergency*

## ➤ **Emergency Speed Dial**

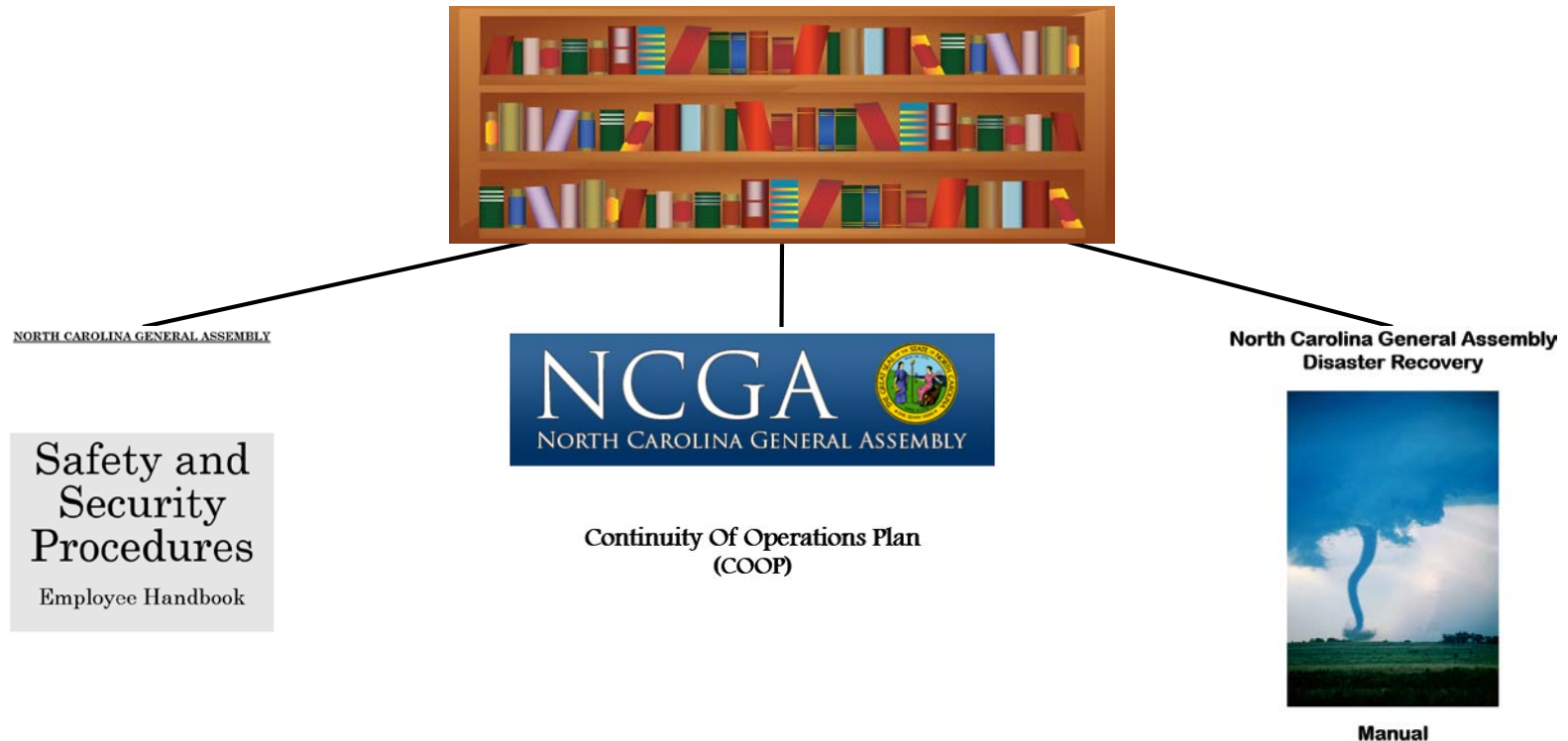
- *On NCGA telephones in offices and conference rooms*
- *Similar to the duress alarm but uses a telephone button*

## ➤ **911 NIPA Alert**

- *Use for serious injury or illness*
- *Will contact Emergency Management*
- ***MUST dial 9-911***



# NCGA Related Documents



*The General Assembly maintains several documents for Employee Safety and Security as well as plans to address the continuation of operations during disasters and emergencies. Three prominent documents are:*

- ❖ *Safety and Security Procedures Employee Handbook*
- ❖ *NCGA Continuity of Operations (COOP)*
- ❖ *ISD Disaster Recovery Manual*

# Questions?