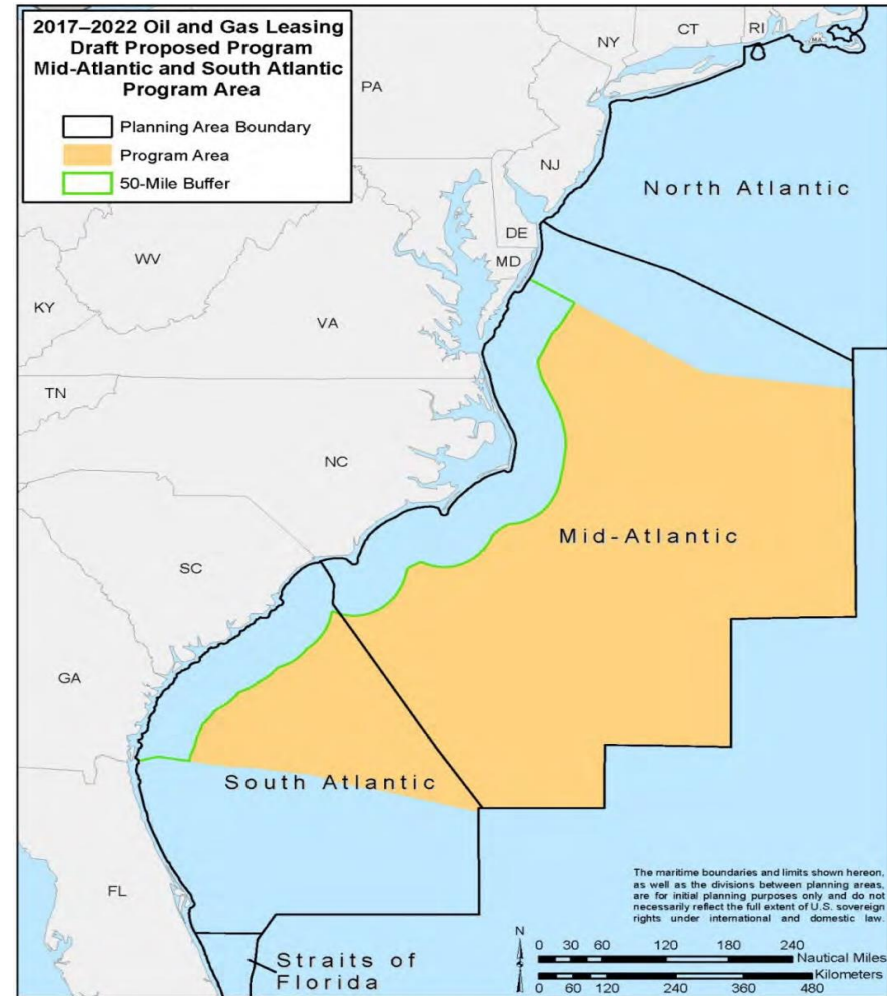




Mid-Atlantic Energy
January 5, 2016
Jenny Kelvington, NC DEQ



- Draft Proposed Five Year Plan
- 50 mile coastal buffer.
- Area will likely be reduced.
- One Atlantic lease sale in 2021.
- Next Step: Draft 2017-2022 Plan and Draft Environmental Impact Statement – March/April 2016.



Source: U.S. Bureau of Ocean Energy Management

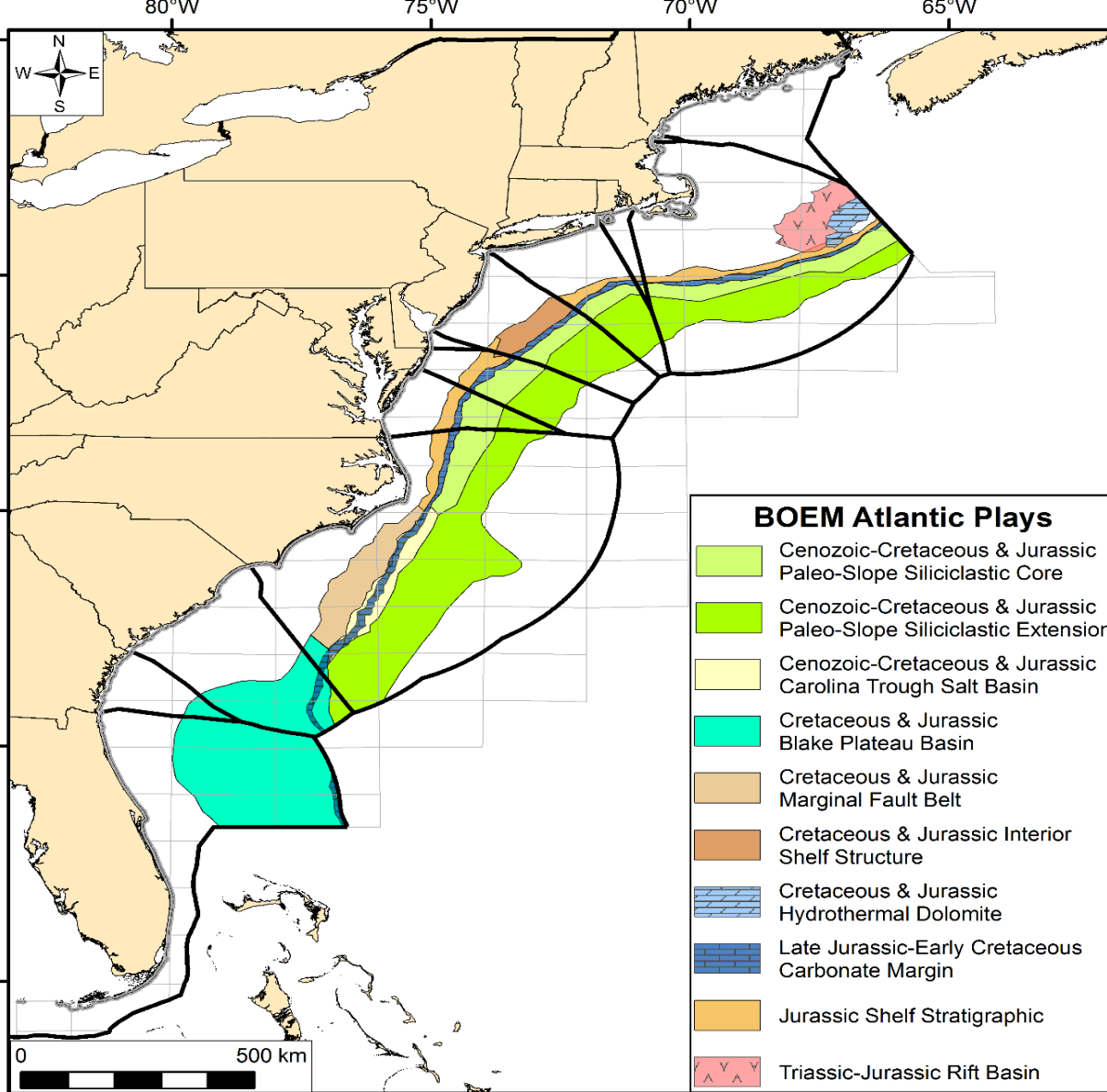




Mid-Atlantic Mean Estimates of Undiscovered, Technically Recoverable Oil & Gas

2.42 billion barrels of oil

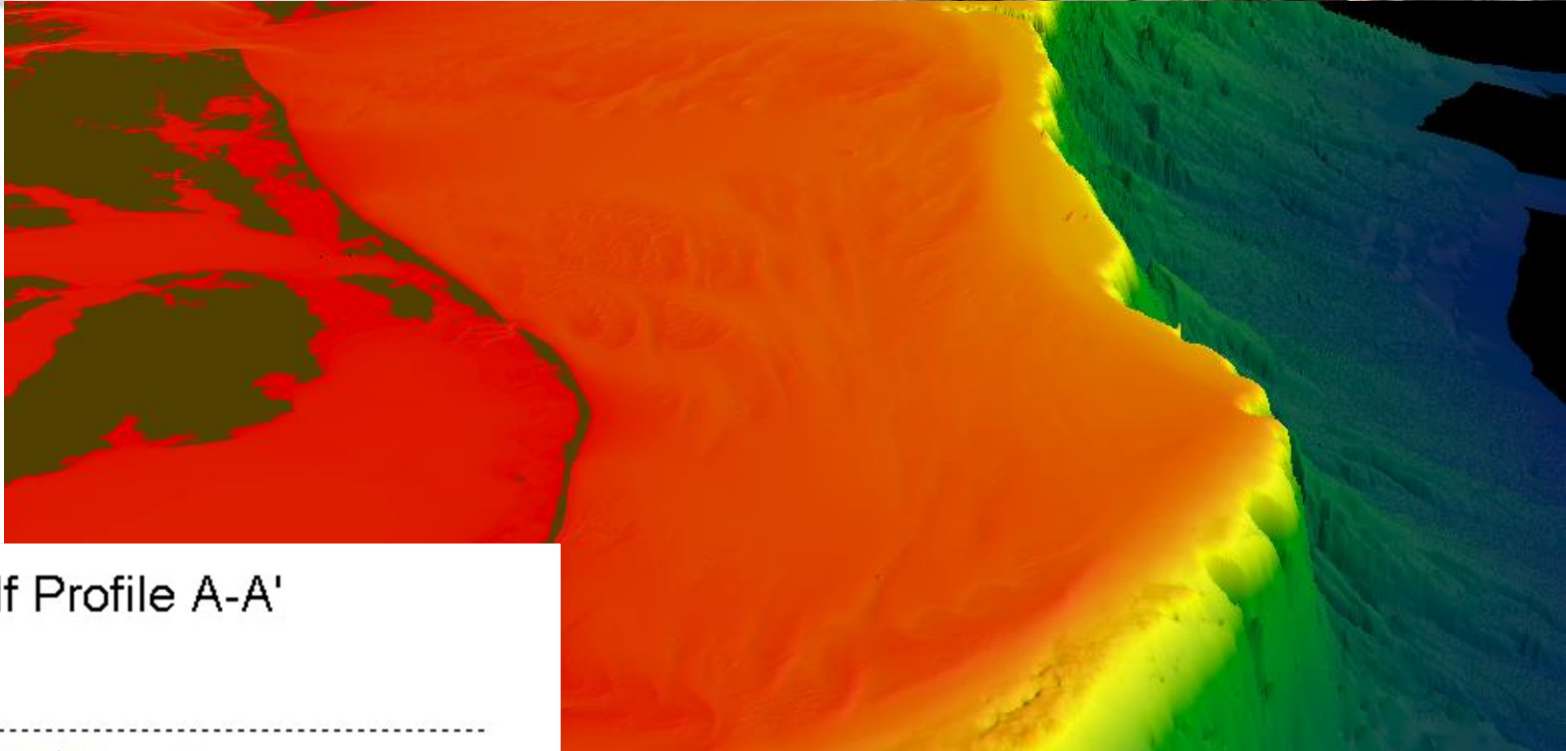
23.38 trillion cubic feet of gas



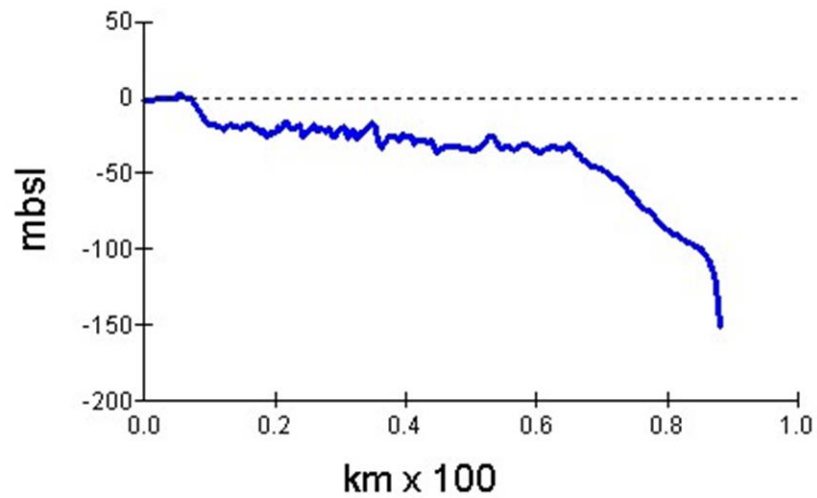
- Federal-State Boundary
- State Boundary OCS Extension & 200 Nautical Mile Line/International Boundary
- Outer Continental Shelf (OCS) Protractions

Source: U.S. Bureau of Ocean
Energy Management





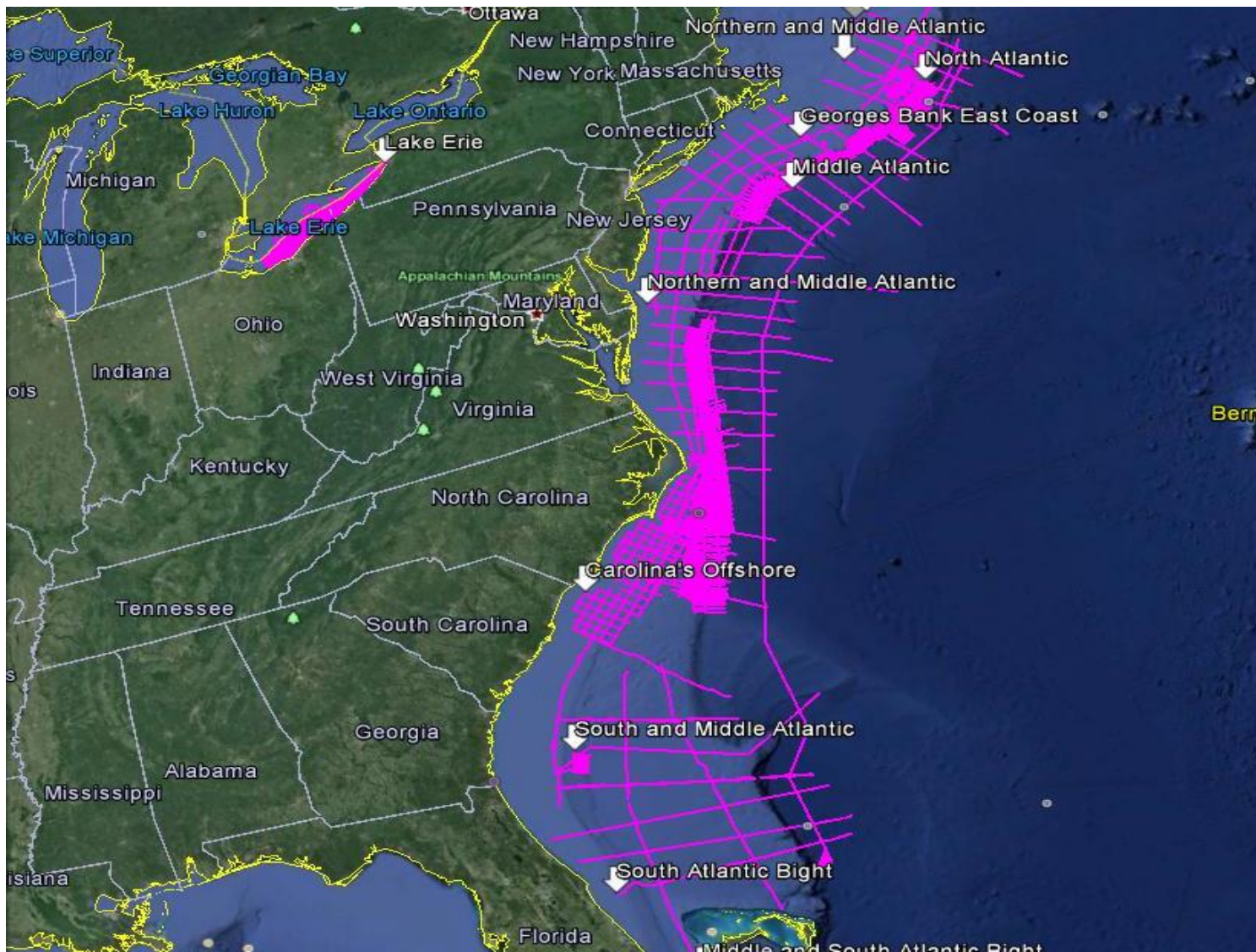
Shelf Profile A-A'



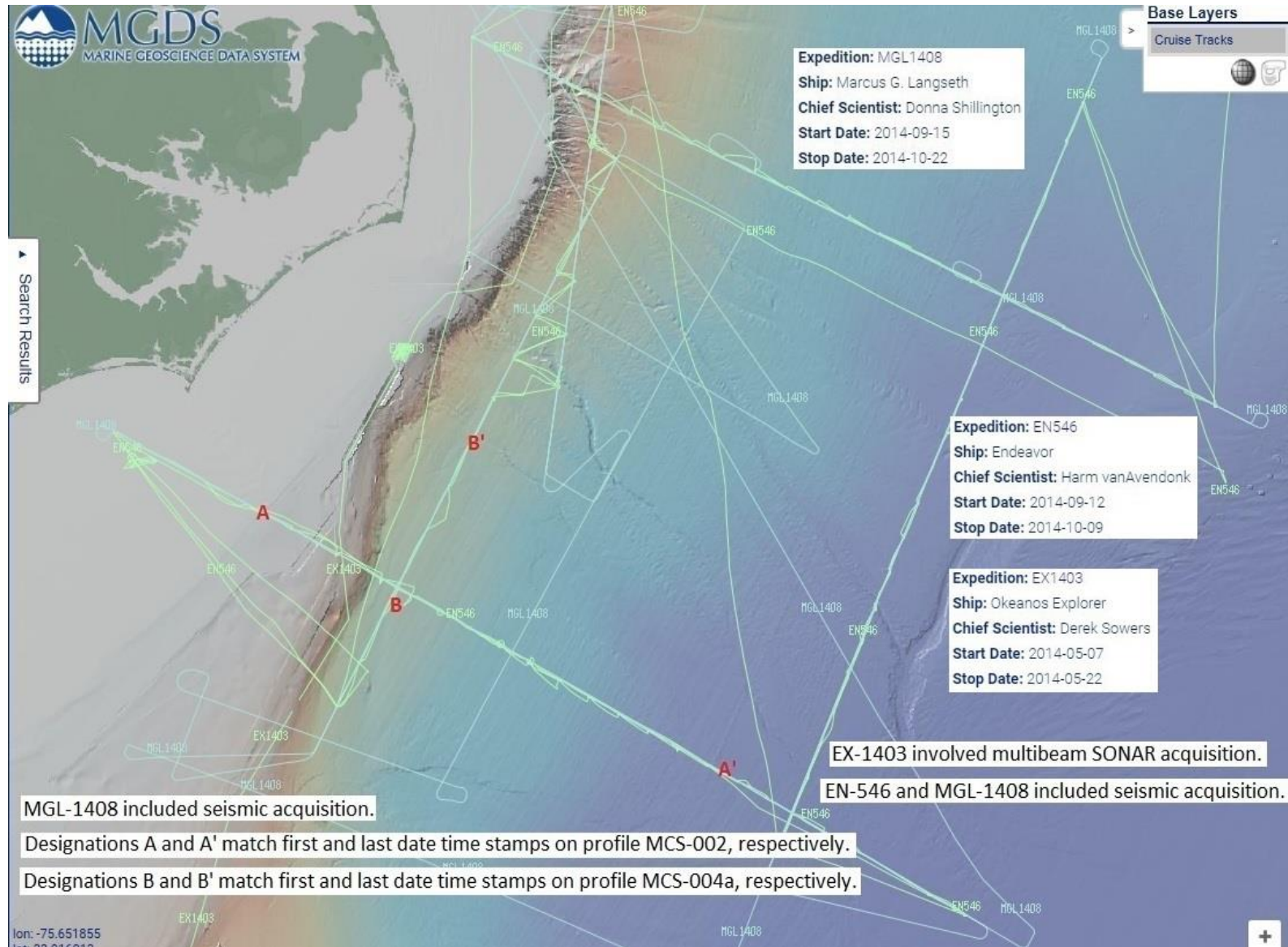
Source: November 18, 2015 Energy Policy Council
Meeting Presentation by, Greg "rudi" Rudolph
Carteret County Shore Protection Office



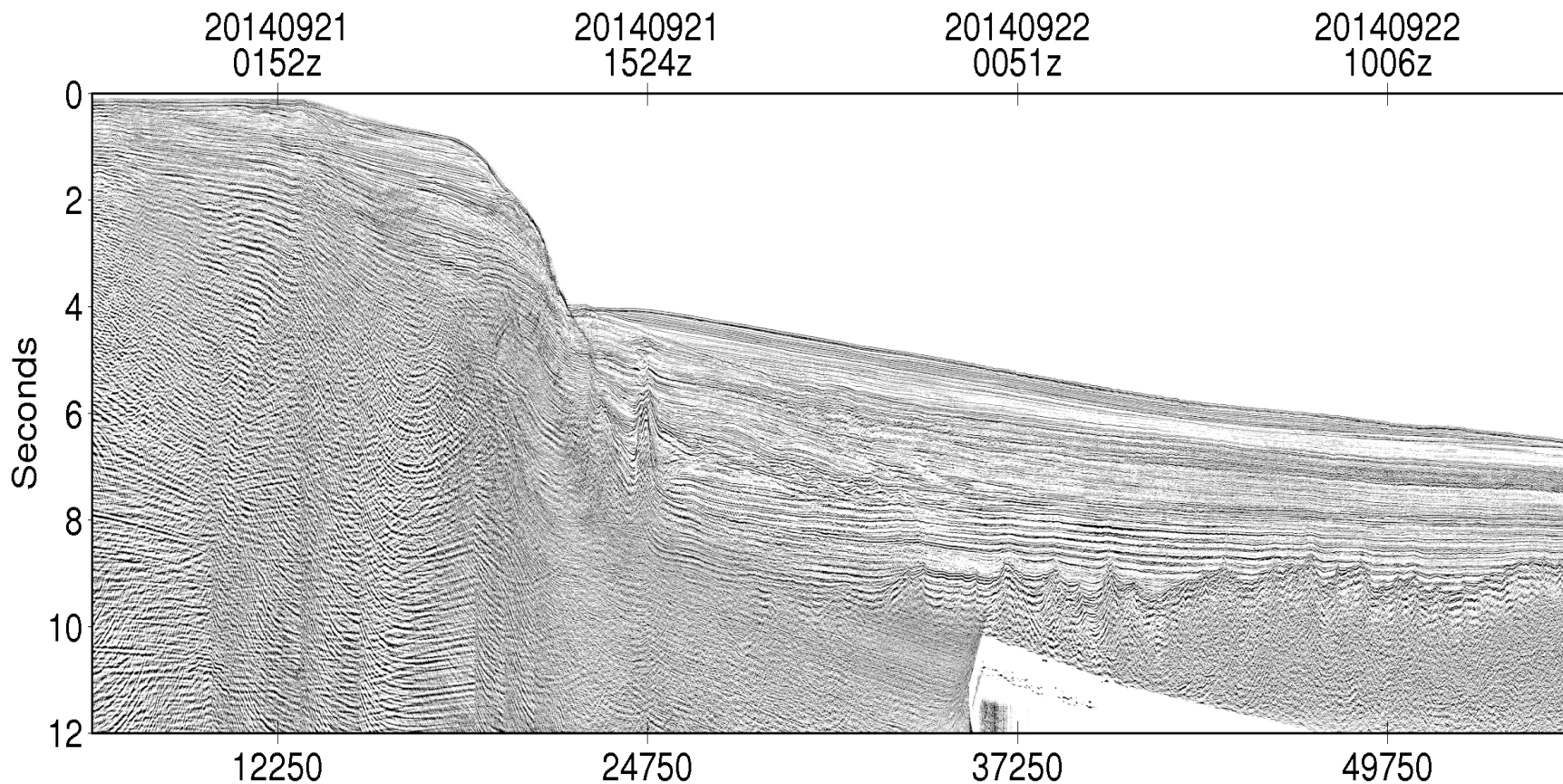
1975 to 1982 Seismic Aquisitions



NSF Seismic Acquisition –Sept – Oct 2014



Trackline A-A'

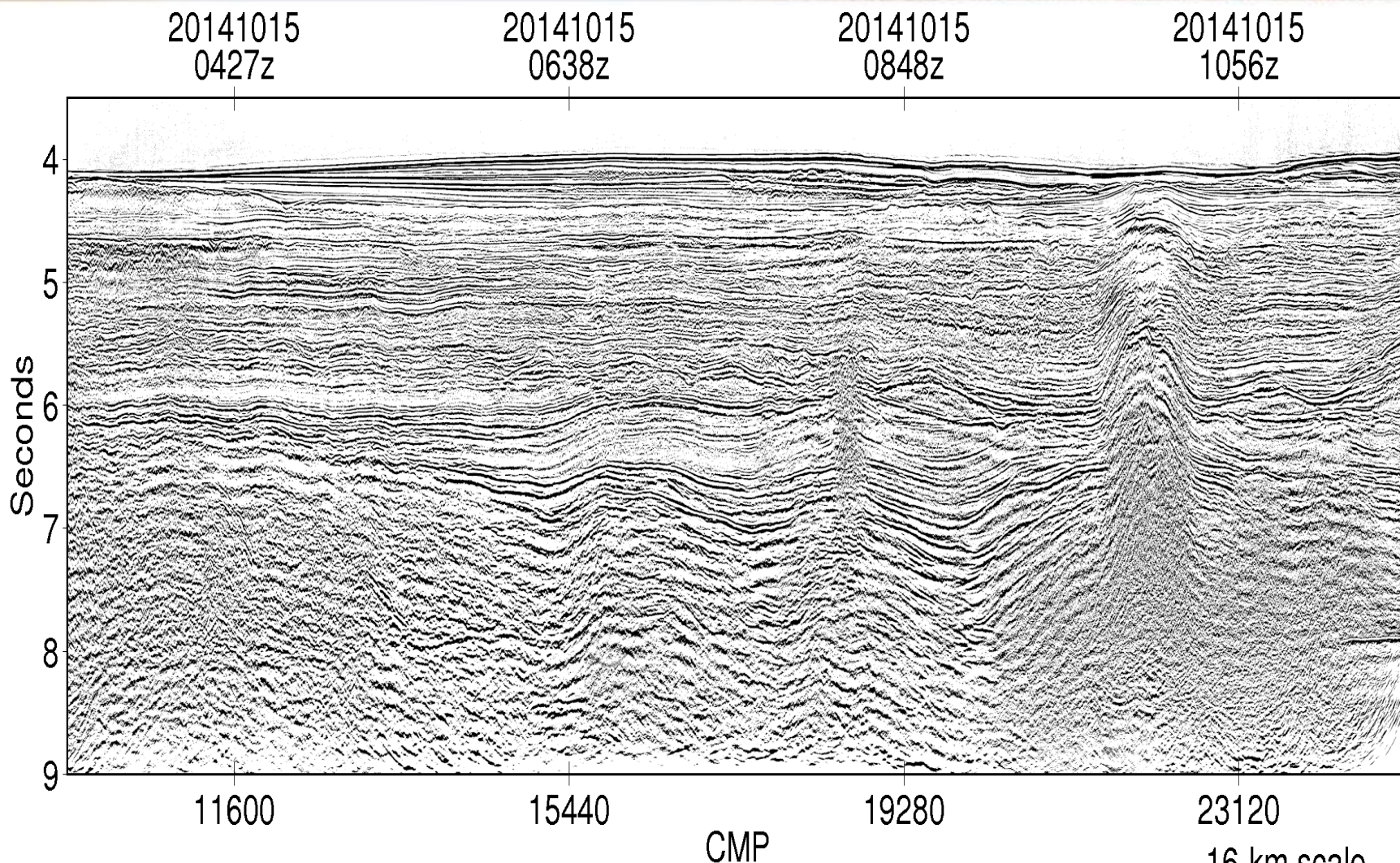


mgds.asp_utig ar56.1834.mgl1408.mcs02.migration.segy
SIOSEIS Gain:agc_window_1.0s Plot_relative_amplitudes:yes. Data DOI 10.1594/IEDA/500013

52-km scale



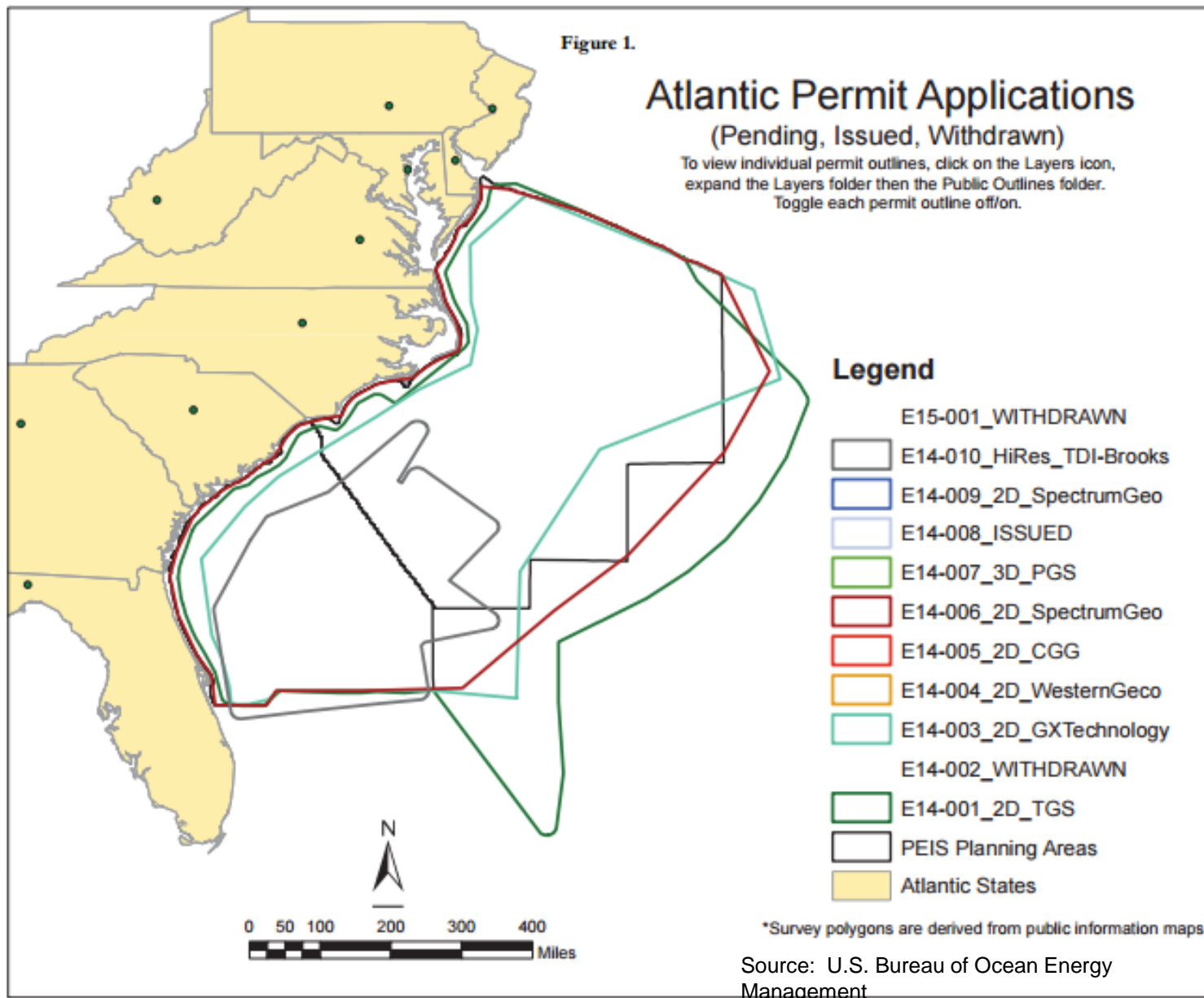
Trackline B-B'



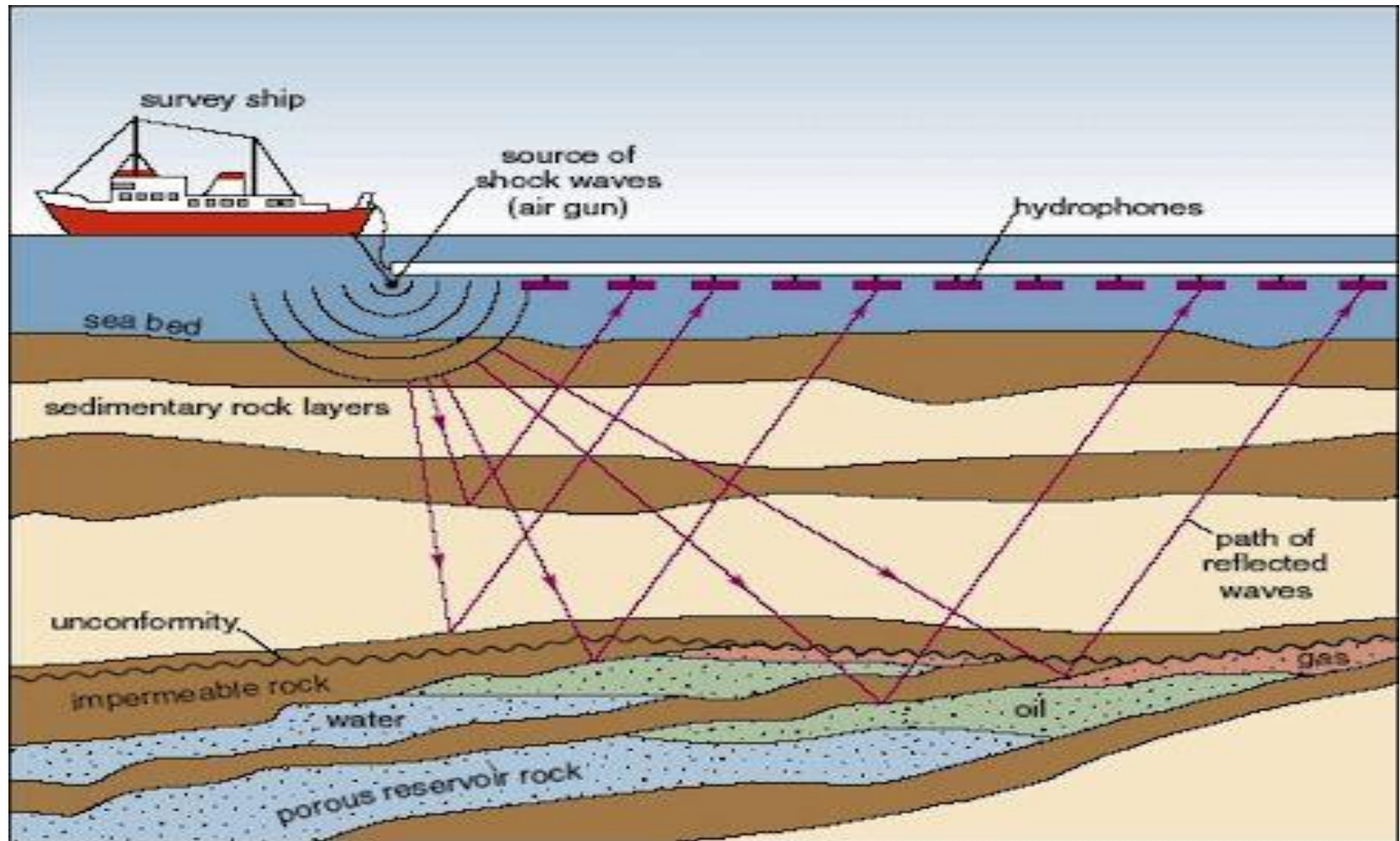
mgds.asp_utig ar56.1842.mgl1408.mcs04aa.migration.segy

SIOSEIS Gain:agc_window_1.0s Plot_relative_amplitudes:yes. Data DOI 10.1594/IEDA/500013

Mid-Atlantic Geological & Geophysical Permitting



Seismic Surveys



Source: Coastal Review Online



Survey Mitigation Measures

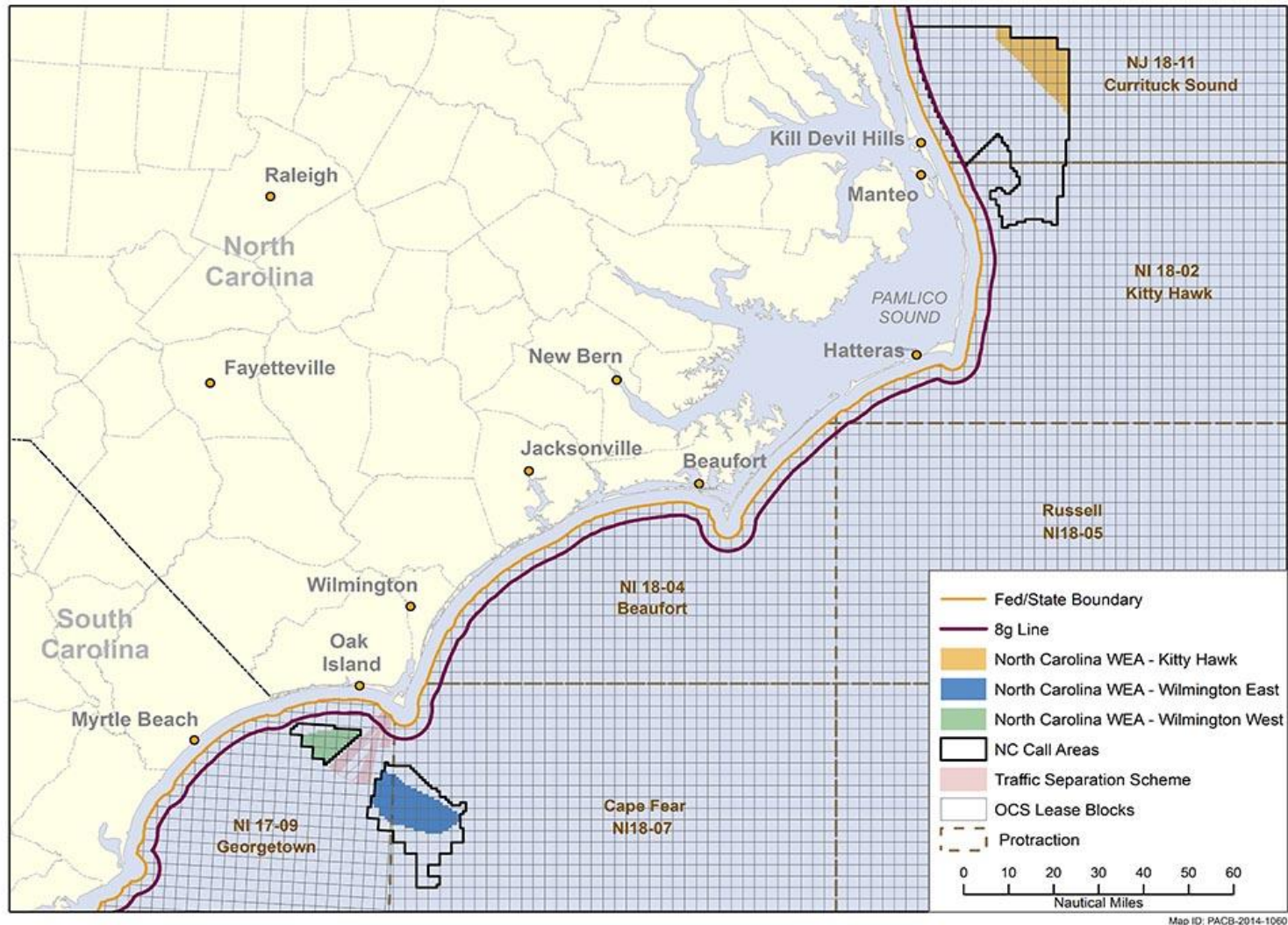


- Passive Acoustic Monitoring
- Two Protective Species Observers
- Time-Area Restrictions
- Ramp-up, delays, & start-up procedures
- Time area restrictions
- Sound restrictions

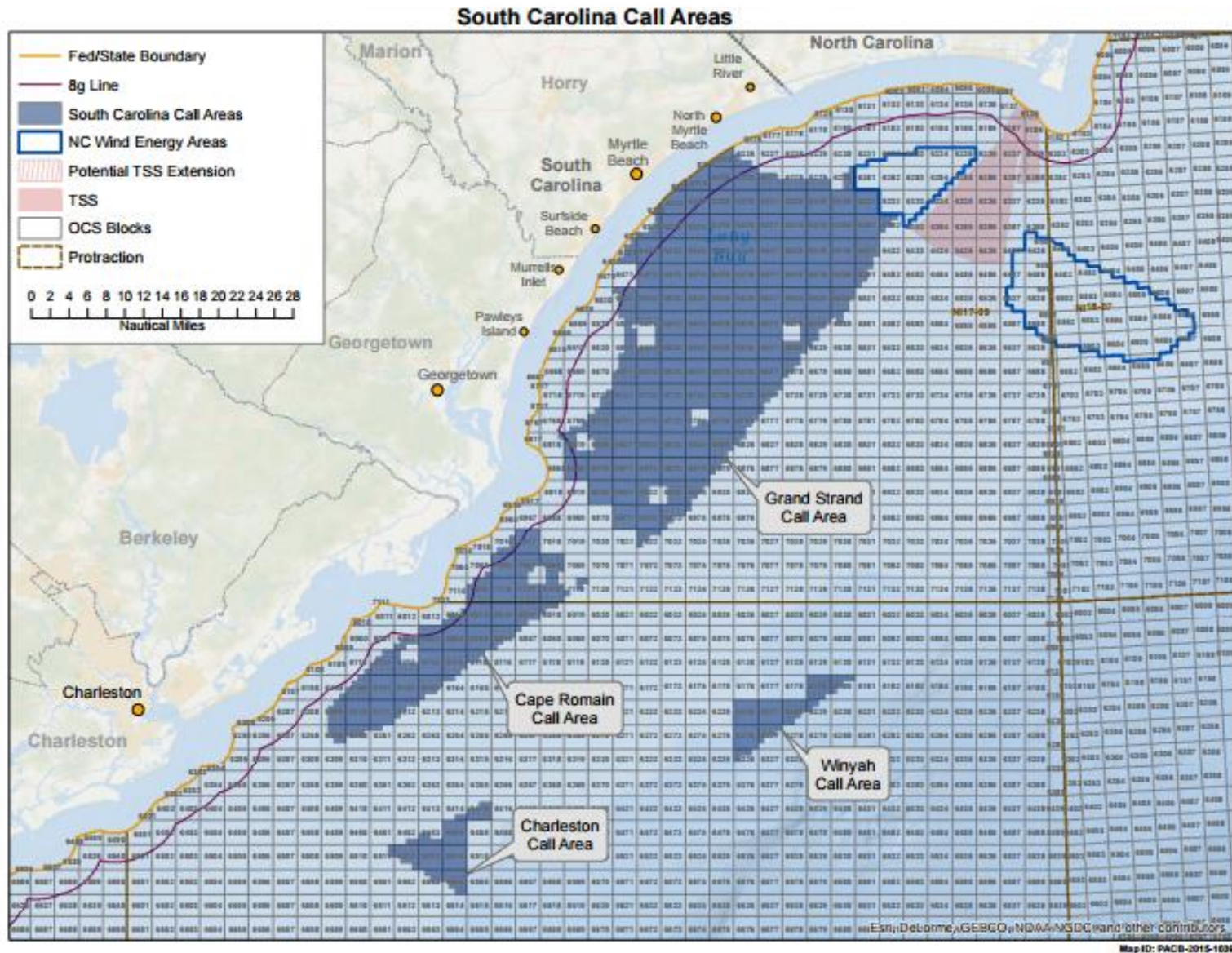


Offshore Wind Energy Areas

Wind Energy Areas (WEAs) - North Carolina



Proposed Offshore Wind Energy Areas



Questions?

