

**JOINT LEGISLATIVE OVERSIGHT COMMITTEE  
ON MEDICAID AND NC HEALTH CHOICE**



# **Vaccine Distribution Update**

**Secretary Mandy Cohen  
Department of Health and Human Services  
January 12, 2021**

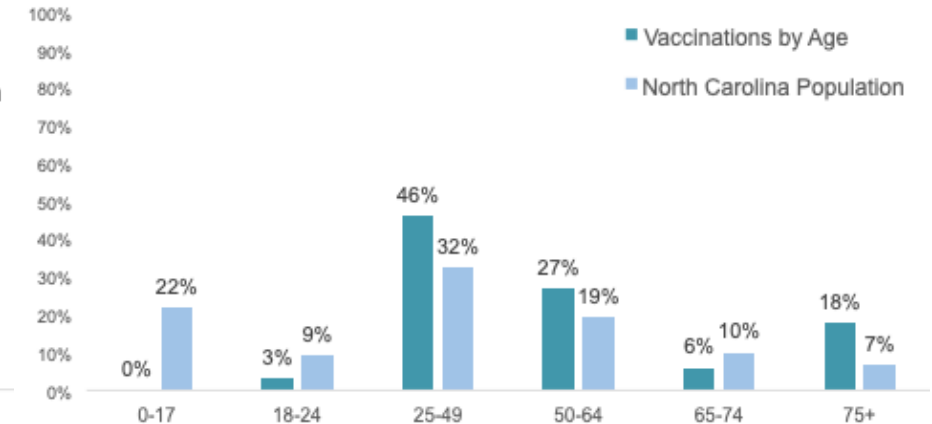
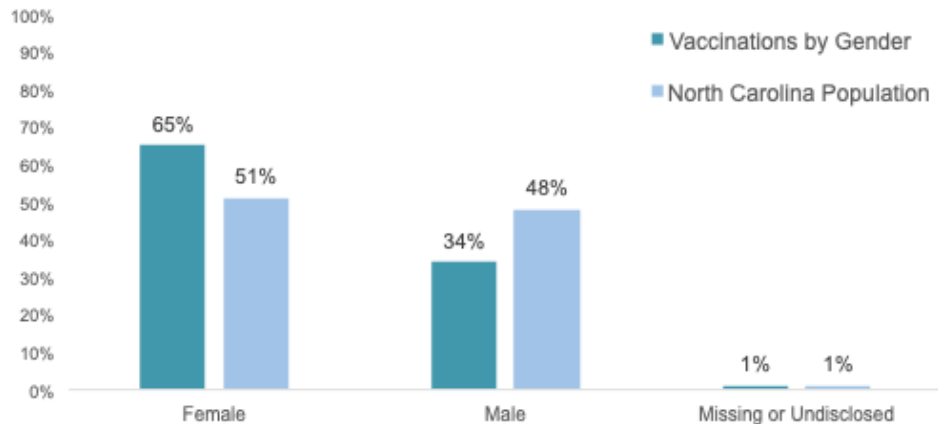
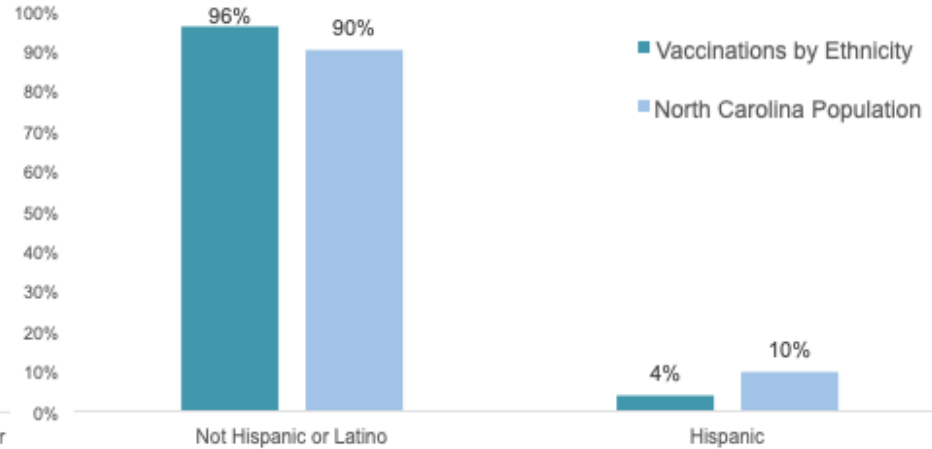
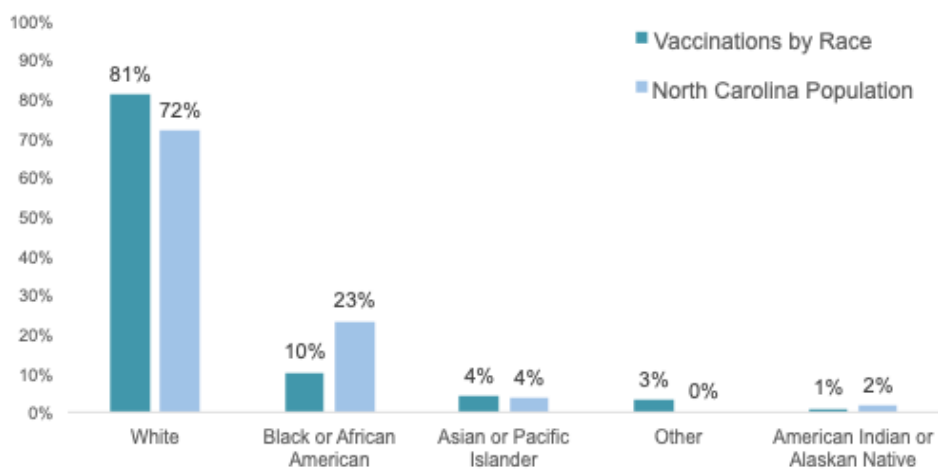
**Tested, safe and effective, COVID-19 vaccines will help us get back in control of our lives and back to the people and places we love.**

- **Scientists had a head start, and thousands of volunteers helped with clinical trials.**
- **The vaccines are tested, safe, and effective.**
- **You cannot get COVID-19 from the vaccine.**
- **Supplies will be limited at first.**
- **You have a spot to take your shot.**

# Vaccinations to Date

- **257,165 doses administered as of 1/11/2021**
  - **219,173 administered in the community**
  - **37,992 doses administered across 503 first dose clinics in long-term care facilities through federal partnership with CVS and Walgreens**
- **113.2% increase in vaccinations over the past 7 days compared to the previous 7-day period**
  - **100,172 doses administered in the past 7 days**
- **White, non-Hispanic females are overrepresented among vaccine recipients**

# Vaccination Demographics



Note: data does not include doses allocated through federal LTC program.

# Getting Vaccines to Eligible Groups Quickly

- **417,550 doses of vaccine allocated to hospitals and local health departments as of 1/11/21**
  - Initial allocation prioritized sending vaccine to all 100 counties – equal # of doses per county population
  - Limitations: Vaccine ships in packs of 975 (Pfizer) or 100 (Moderna); cannot be moved more than once due to fragility of the vaccine itself
- **165,900 doses allocated to Long-Term Care federal vaccine program through CVS/Walgreens**
- **Supporting local health departments with staffing needs**
  - Requests for staffing assistance made through emergency management channels
  - Reassigning contact tracing staff and regional DHHS staff
  - National Guard focused vaccine deployment – Forsyth and Alamance
  - Matching volunteers
- **Onboarding additional vaccine providers**
  - Prioritizing FQHCs, Rural and Community Health Centers
  - Encouraging partnership between LHDs and additional vaccine providers
  - More automated enrollment of vaccine providers through CVMS

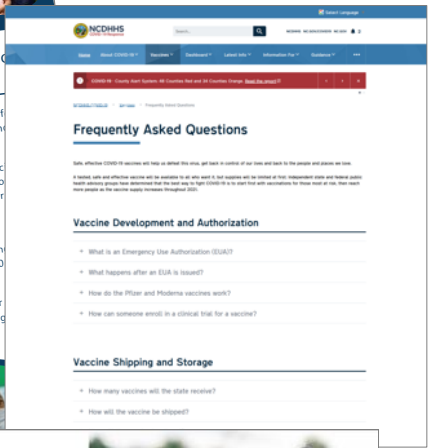
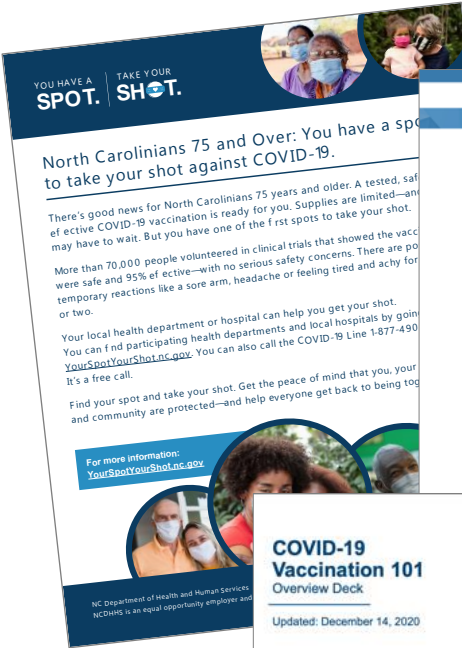
# Getting Vaccines to Eligible Groups Quickly

- New high-throughput sites added this week (adding 45.5K potential vaccinations weekly)
  - Forsyth County
  - Albemarle
  - Vidant - Eastern Sites
  - Cone - Guilford
  - Atrium - Charlotte & Surrounding Counties
  - UNC - Orange County Clinics
  - Duke - Durham
  - WakeMed - Wake County
  - Western NC Collaboration with Dogwood, MAHEC, and FQHCs
- COVID-19 Vaccine Management System (CVMS)
  - Existing state vaccine database not suitable for vaccination effort of this scale
  - Federal vaccine system cannot integrate with electronic health records
  - Deploying our own upgraded system allowed us to create a system that was tailored to the needs of North Carolina and build the ability to ingest data directly from EHRs
  - DHHS hosts daily CVMS office hours to support providers
  - Issues/questions can be sent to helpdesk:  
<https://immunize.nc.gov/providers/covid-19training.htm>
- Additional vaccine capacity being added as more vaccine becomes available
  - DHHS vendor contracts to assist in targeting underserved communities

# Helping Consumers Find their Spot and Get their Shot

## Public Education

- Creating and disseminating materials with accurate and up to date information on vaccines
- YourSpotYourShot.nc.gov



## Helping People Find Their Spot

- List of all enrolled vaccine providers who have received vaccine allocations is linked at the top of the NCDHHS vaccine page
- Working with vaccine providers to keep information updated and on staffing and strategies to make sure calls are answered
- Stood up COVID-19 Line (1-877-490-6642) to help people find a vaccination site.
- Standing up additional customer service support by adding call center capacity to address clinical and non-clinical inquiries

Vaccine providers may update their information using this [form](#).

Show 100 entries

Search:

County (or Counties) Served	Organization	Website
Alamance	Alamance County Health Department	<a href="https://www.alamance-nc.com/healthdept">https://www.alamance-nc.com/healthdept</a>
<p><b>Phone Number</b> 336-570-6367</p> <p><b>Email Address</b></p> <p><b>Additional Information</b> <a href="https://www.facebook.com/AlamanceCountyHealthDept/">https://www.facebook.com/AlamanceCountyHealthDept/</a></p>		
Alamance, Guilford, Rockingham	Cone Health	<a href="http://conehealth.com/covid19vaccine">http://conehealth.com/covid19vaccine</a>
Alamance, Guilford, Rockingham	Cone Health Wesley Long Hospital	<a href="https://www.conehealth.com/covid-19-information/covid-19-vaccine-informa...">https://www.conehealth.com/covid-19-information/covid-19-vaccine-informa...</a>

# Addressing Equity

## Operational Approaches

- Prioritizing vaccine providers who can reach historically marginalized populations (e.g., FQHCs, community health centers)
- Prioritization emphasizes occupation (e.g., frontline essential workers) in addition to age
- Vaccine and resource allocation (e.g., surge staff deployment) across the state
- Early activation point-of-care CVMS registration to vaccinate individuals without email

## Regular Engagement with HMP Leaders

- HMP Advisory Group
- Secretary's roundtables with faith and community leaders
- Over 80 vaccine presentations to stakeholder groups, from hosting small community health workers "charlas" to webinars with 100-3000+ participants each
- Bi-weekly calls with eastern NC black ministers
- Weekly updates with Latin19 group

## Bringing in the Voices of Trusted Messengers

- Messengers are 90% of message effectiveness
- Equipping trusted messengers with accurate and up-to-date information about the vaccine
- Trained >70 expert vaccine presenters in NCDHHS, now offering the trainings to external stakeholders who will receive regular updates on vaccination



Started with health care workers & trusted public influencers. Inviting others to share videos to promote vaccination.



# Vaccine Prioritization

- Because vaccine supplies are currently limited, states must make vaccine available in phases
- In consultation with the NC Vaccine Advisory Committee, NC chose to align to the CDC’s ACIP recommendations which were released on December 22nd

ACIP Recommendations	North Carolina’s Updated Plan
<p><b>Phase 1a</b></p> <ul style="list-style-type: none"> <li>• Health Care workers</li> <li>• Long Term Care Staff and Residents</li> </ul>	<p><b>Phase 1a</b></p> <ul style="list-style-type: none"> <li>• Health care workers directly caring for or working in areas with patients with COVID-19</li> <li>• Long-term care staff and residents</li> </ul>
<p><b>Phase 1b</b></p> <ul style="list-style-type: none"> <li>• People ≥75 years</li> <li>• Frontline essential workers</li> </ul>	<p><b>Phase 1b</b></p> <ul style="list-style-type: none"> <li>• Group 1. People ≥75 years</li> <li>• Group 2. Frontline essential and health care workers ≥50</li> <li>• Group 3. Frontline essential and health care workers of any age</li> </ul>
<p><b>Phase 1c</b></p> <ul style="list-style-type: none"> <li>• Persons aged 65-74 years</li> <li>• Persons aged 16-64 years with high-risk medical conditions</li> <li>• Other essential workers</li> </ul>	<p><b>Phase 2</b></p> <ul style="list-style-type: none"> <li>• Group 1. Persons aged 65-74 years</li> <li>• Group 2. Persons aged 16-64 years with high-risk medical conditions</li> <li>• Group 3. Anyone who is incarcerated or living in other close group living settings who has not already been vaccinated</li> <li>• Group 4. Other essential workers</li> </ul>

# Vaccine Prioritization

- Prioritizes people at highest risk for severe disease/hospitalization/death and those at highest risk for exposure due to the nature of their job.
- Currently most vaccine providers have begun vaccinating those in Phase 1b, Group 1.
- Starting with people 75 and older to protect those at the highest risk of being hospitalized or dying

	% of Cases	% of Deaths
NC ≥75	7%	60%
NC ≥65	15%	83%
US ≥65	14.4%	80.7%

- Prioritizing frontline essential workers who face occupational risks that increase risk of exposure – cannot do their work from home and often cannot do that work physically distant (police, childcare, etc.)
  - Disproportionately from historically marginalized populations
  - Higher rates of chronic conditions

# Your Best Shot at Stopping COVID-19

- Phase 1a: Health care workers fighting COVID-19 and Long-Term Care staff and residents.
- Phase 1b: Adults 75 years or older and frontline essential workers.
  - Group 1: Adults 75 years or older
  - Group 2: Health care workers with in-person patient contact and frontline essential workers 50 years or older
  - Group 3: Health care workers with in-person patient contact and frontline essential workers of any age

# Who will be part of Group 2 in Phase 1b?

If you can answer yes to these questions, you are eligible for vaccine in Phase 1b, Group 2.

1. Are you 50 or older?
2. Do you have to be in-person at your work site and be within 6 feet of others?
3. Do you work in one of these essential sectors? These frontline essential sectors and workers align with federal prioritization guidance from the CDC to save lives and slow the spread of COVID-19.

Health Care and Public Health	Public Safety	Food & Agriculture	Government and Community Services	Essential Goods	Critical Manufacturing	Transportation	Education
<p>Workers include:</p> <ul style="list-style-type: none"> <li>• Health care workers and support staff with in-person patient contact</li> <li>• Public health workers</li> <li>• Social workers</li> <li>• Caregivers to children or elderly with special needs</li> <li>• Mortuary service providers</li> </ul>	<p>Workers include:</p> <ul style="list-style-type: none"> <li>• Firefighters</li> <li>• Police officers</li> <li>• Corrections workers</li> <li>• Security officers</li> <li>• Public agency workers responding to abuse and neglect</li> </ul>	<p>Workers include:</p> <ul style="list-style-type: none"> <li>• Meat packing workers</li> <li>• Food processing workers</li> <li>• Farmworkers</li> <li>• Migrant farm/fishery workers</li> <li>• Food distribution and supply chain workers</li> <li>• Restaurant workers</li> </ul>	<p>Workers include:</p> <ul style="list-style-type: none"> <li>• U.S. Postal Service Workers</li> <li>• Court workers</li> <li>• Elected officials</li> <li>• Clergy</li> <li>• Homeless shelter staff</li> </ul>	<p>Workers include:</p> <ul style="list-style-type: none"> <li>• Workers in stores that sell groceries and medicine</li> </ul>	<p>Workers include:</p> <ul style="list-style-type: none"> <li>• Workers manufacturing medical supplies, medical equipment or PPE</li> <li>• Workers manufacturing products needed for food and agricultural supply chains</li> </ul>	<p>Workers include:</p> <ul style="list-style-type: none"> <li>• Public transit workers</li> <li>• Division of Motor Vehicles workers</li> <li>• Transportation maintenance and repair technicians</li> <li>• Workers supporting highway infrastructure</li> </ul>	<p>Workers include:</p> <ul style="list-style-type: none"> <li>• Child care staff</li> <li>• K-12 teachers and support staff</li> <li>• Higher education instructors and support staff</li> </ul>