



NORTH CAROLINA  
**RAILROAD**  
C O M P A N Y

## **21<sup>st</sup> Century Transportation Committee**

January 16, 2008

# Railroads in the News



## U.S. Rail Freight Traffic Second-Highest in History in 2007

**Ener**

WASHINGTON, January 3, 2008 — Although down from 2006's record-setting levels, freight traffic on U.S. railroads was the second highest on record, the Association of American Railroads (AAR) reported today.

**live**

Full-year 2007 U.S. carloads totaled 16,952,288, down 2.5 percent (426,598 carloads) from 2006. Full-year 2007 U.S. intermodal loadings were 12,026,660 trailers and containers, down 2.1 percent (255,561 units) from 2006. Total volume for the year was estimated at 1.76 trillion ton-miles, although down 1.0 percent from last year.

# Change Driven by Necessity



# Change Driven by Necessity





# Rail Moves Products and People



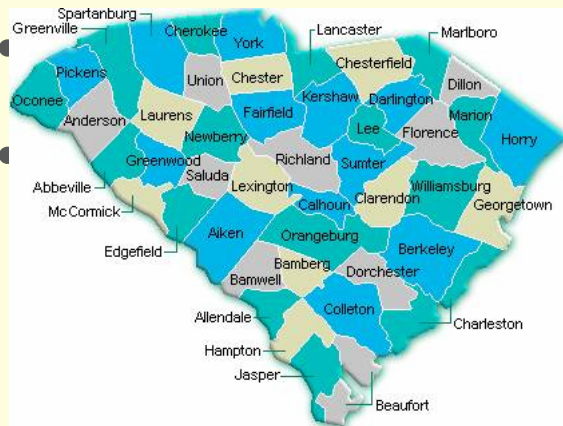
VRE commuter train passing Norfolk Southern freight train in Virginia

# 2020 North Carolina Railroad

- Double tracking increased by 50%
- 12 more daily freight trains to intermodal facility at Charlotte airport
- Freight shipments surpassing 2 million carloads
- Rush hour commuter rail linking the Piedmont, Triangle, Metrolina and Eastern N.C.
- Safer crossings and bridge overpasses
- Better performance for trains already in operation

# 2030 Growth

- By 2030, 4 million people, equivalent to the population of S.C. will arrive in N.C.

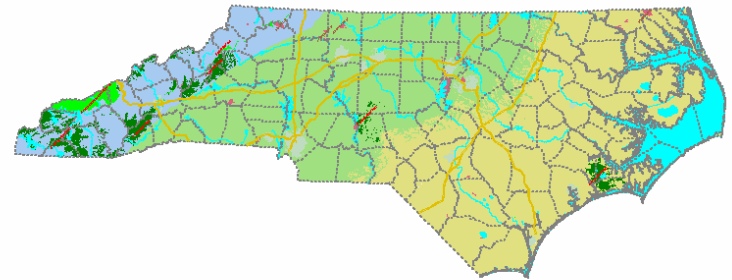


will have a p

ents per ho

dents per d

– 184,046 per year



# North Carolina Depends on Freight



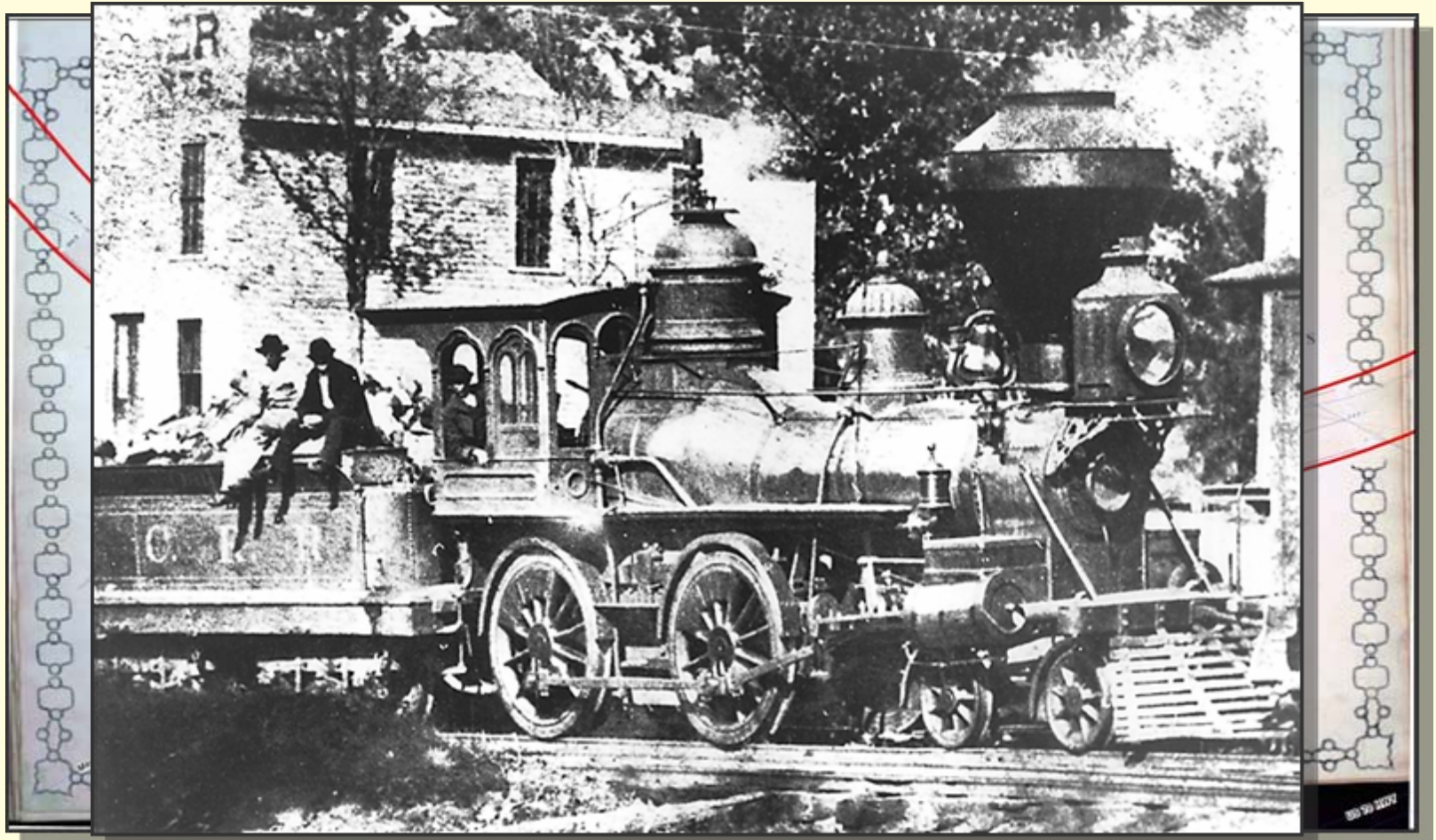
Military cargo being transported through Raleigh, N.C.



A coal train en route to Progress Energy in Goldsboro, N.C.



# N.C Railroad Corridor: 1850



# New Growth and Jobs



# N.C. Railroad Corridor: 2008



Charlotte, N.C.



Morehead City State Port



# Railroads Mean Business



On N.C. railroad tracks you will find:

- 70 freight trains daily
- 1.5 million freight cars annually
- 8 Amtrak trains daily



# Railroads Mean Business

**DIXIEPLY**

**Cargill**

 **TRANSMONTAIGNE**


 **Duke Energy®**

 **Weyerhaeuser**

**NUCOR**

**RJReynolds**

 **Progress Energy**  
People. Performance. Excellence.

 **NORTH CAROLINA  
RAILROAD  
COMPANY**

# N.C. Railroad and Military



# N.C. Railroad and Business



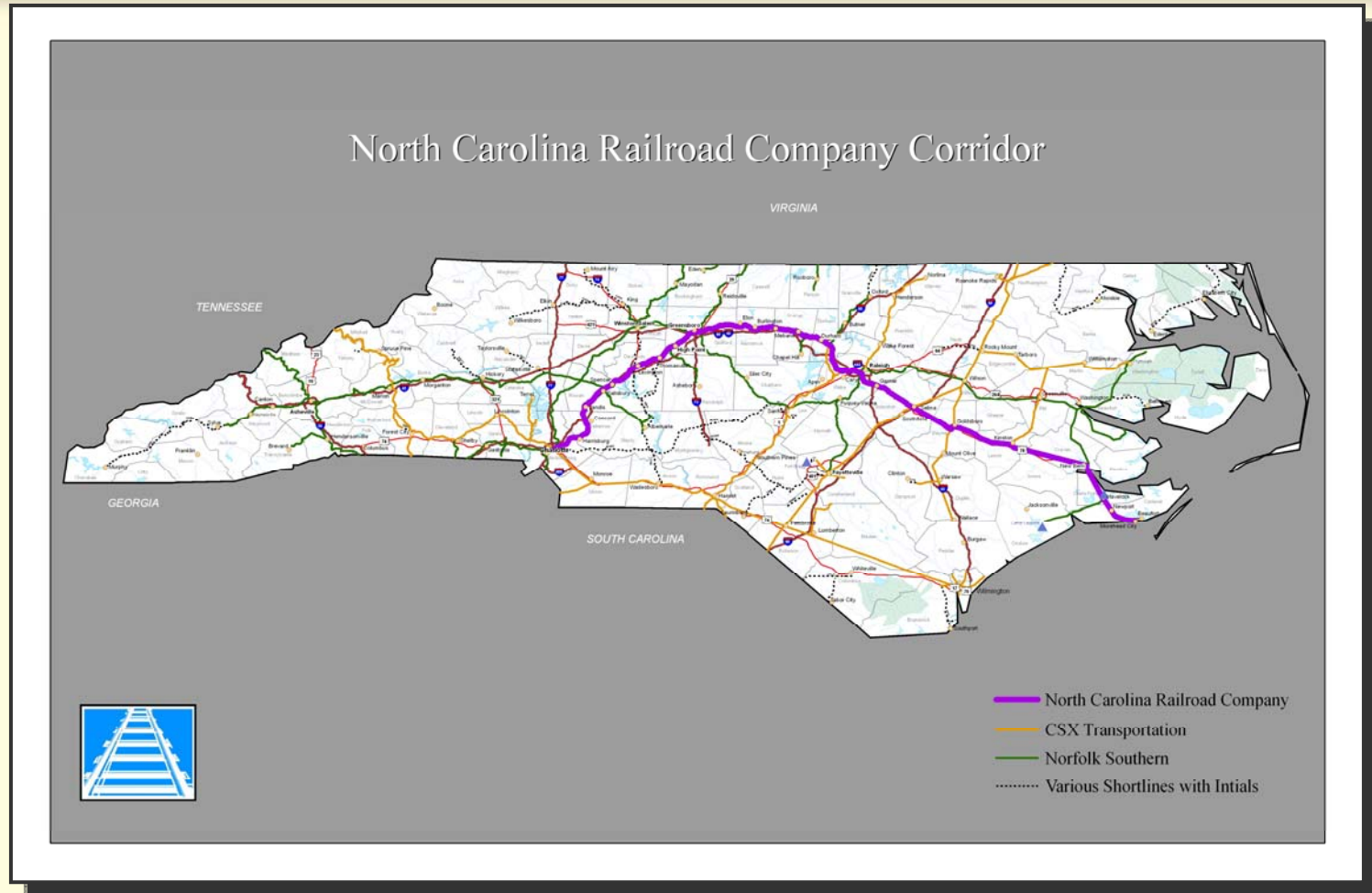
- These companies ship agricultural products, automobiles, construction materials, chemicals, rubber, steel and wood products and jet fuel
- Products shipped range from orange juice to bicycles to newsprint for newspapers

# N.C. Railroad and Business

- 24% of N.C. industrial economic output relies on N.C. Railroad freight services
- N.C. Railroad saves those freight customers \$198 million annually
- The 254,000 freight cars on the NCRR replaces 762,000 trucks on N.C.'s highways



# N.C. Railroad Corridor



**Faster, Safer, Better**

# **\$160 Million Capital Investment Program**

# Faster, Safer, Better



Old



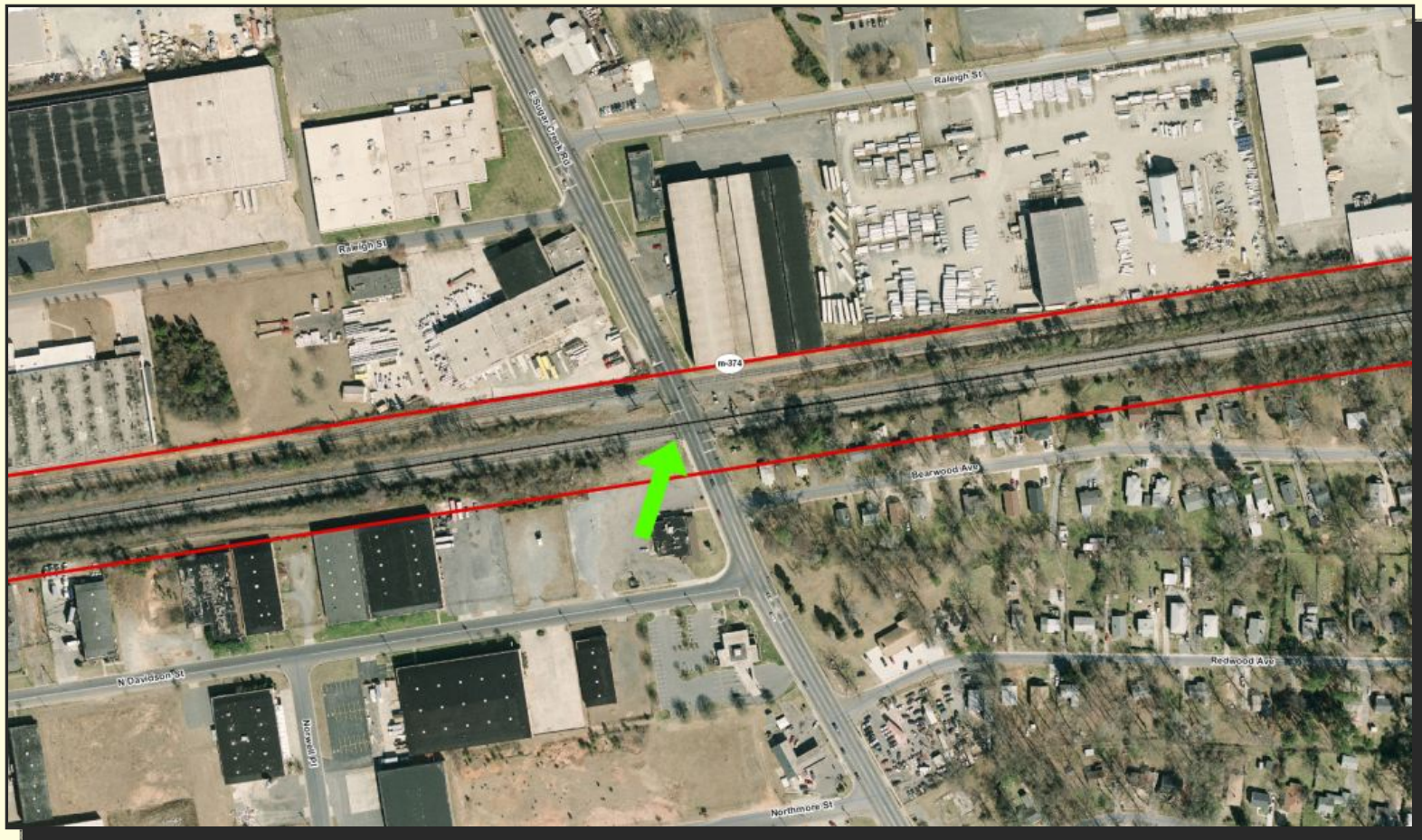
New Highway 54 Bridge  
Double tracking railroad  
Welded steel bridge in place under New Bridge, N.C.  
Old Highway 54 Bridge  
Johnston County, N.C.



NORTH CAROLINA  
**RAILROAD**  
C O M P A N Y

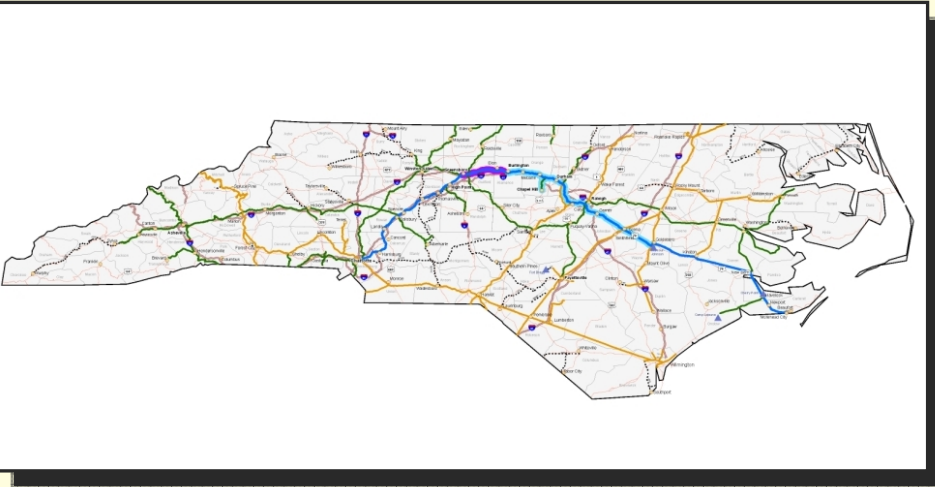


# Capital Investment Program: Sugar Creek Road Bridge





# Commuter Rail Capacity Study



- Would share track
- Greensboro to Goldsboro is study corridor
- Study will determine costs for upgrading
  - Sidings
  - Signals
  - Bridges

# Commuter Rail Capacity Study



# N.C. Railroad: Corridor for Commerce

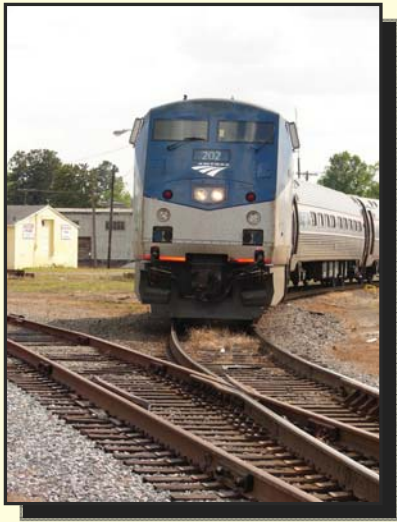




# N.C. Railroad: Corridor for Commerce







NORTH CAROLINA  
**RAILROAD**  
C O M P A N Y

**Thank You**

