

21st Century Transportation Commission

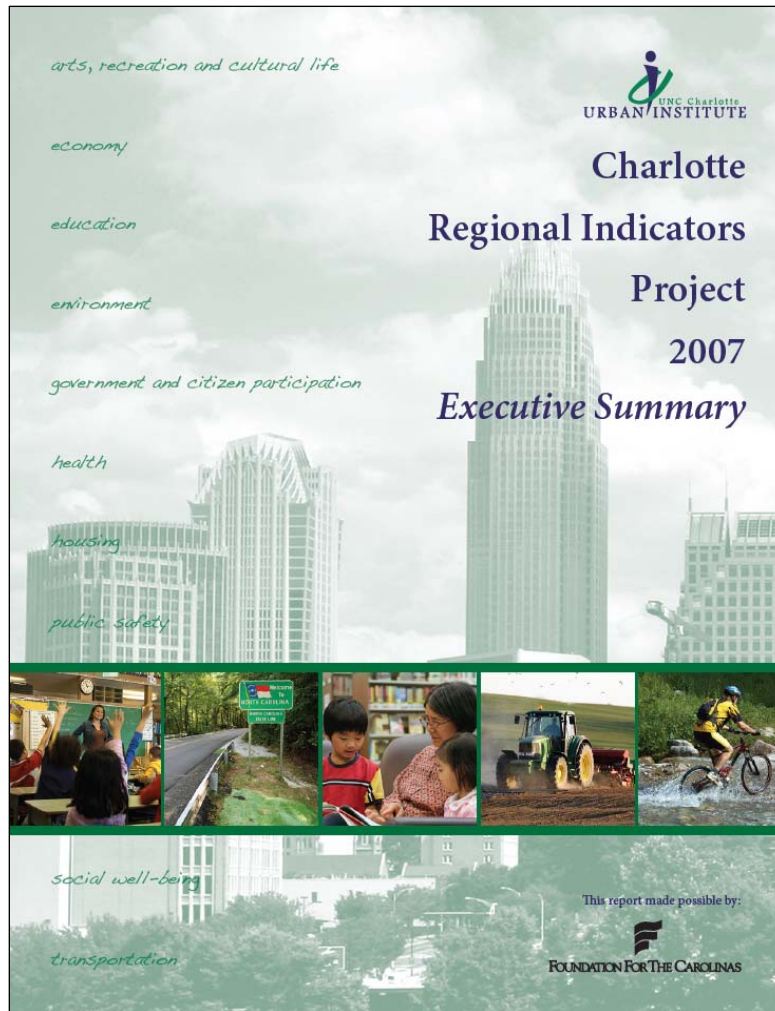
Overview of Regional Growth

Jeff Michael, Director
UNC Charlotte Urban Institute

January 16, 2008



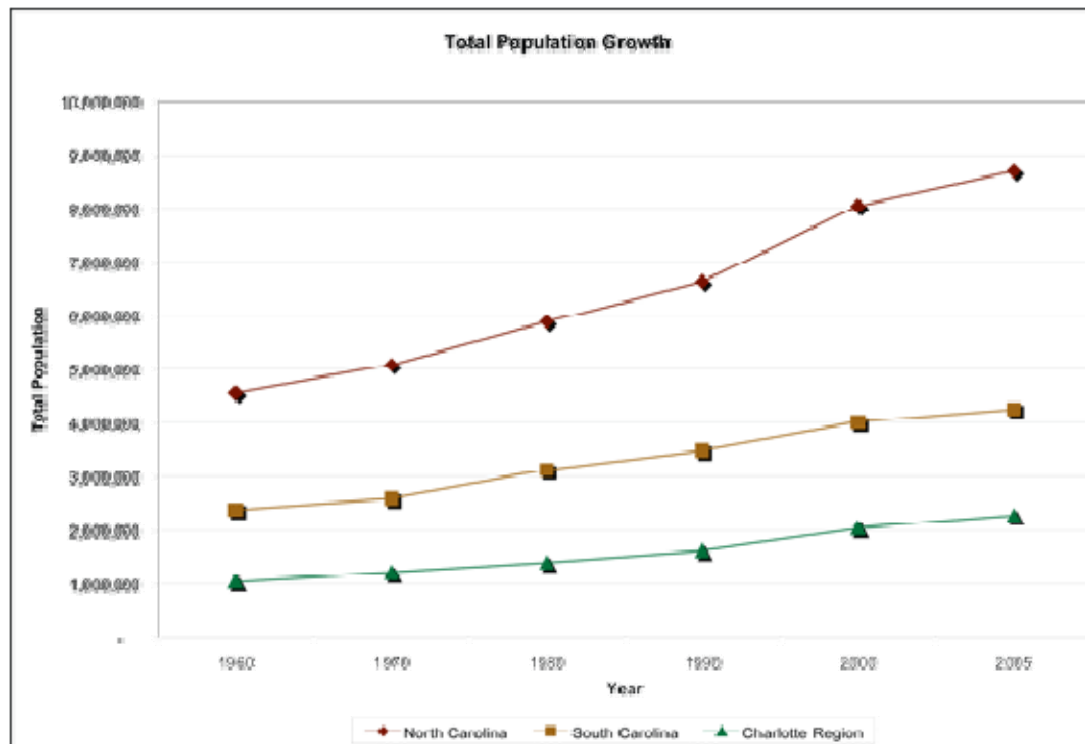
Charlotte Regional Indicators Project



- Based on indicators of success for the 14 county Charlotte Region
- 10 Theme Areas
- 54 Indicators

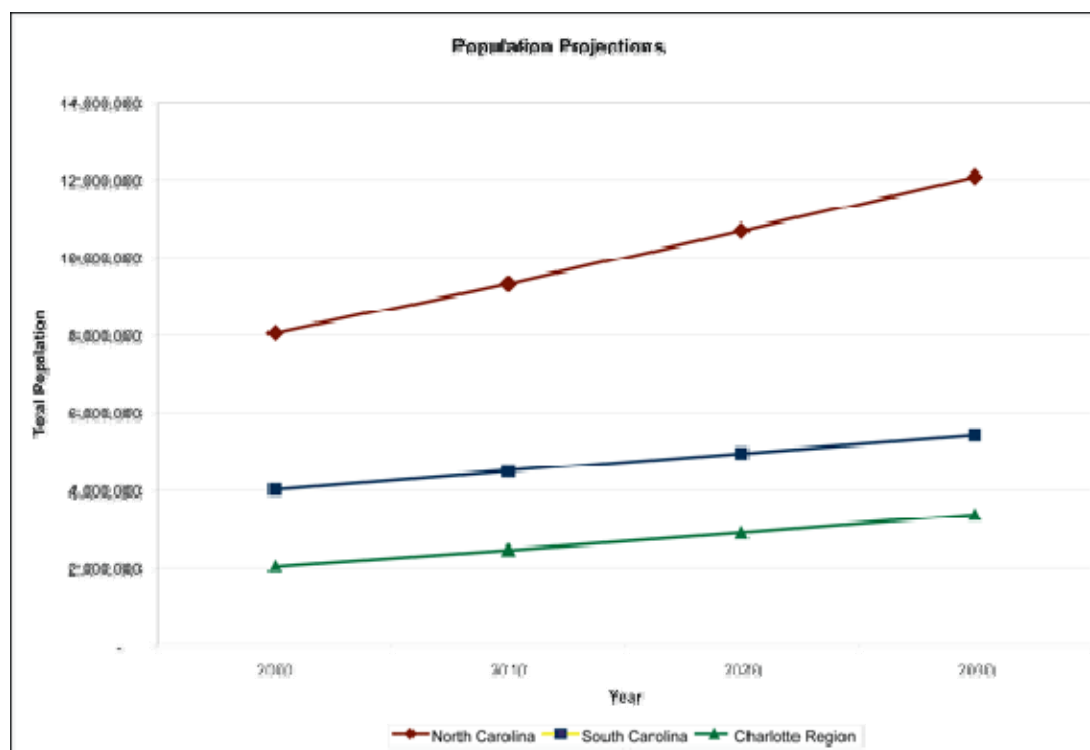
Demographics: Total Population Growth

- The 14 county Charlotte Region is home to 2.2 million people
- Migration accounted for 68% of growth from 2000 to 2005 (compared to growth by birth rates)
- The Region added 400,000 people in the 1990s



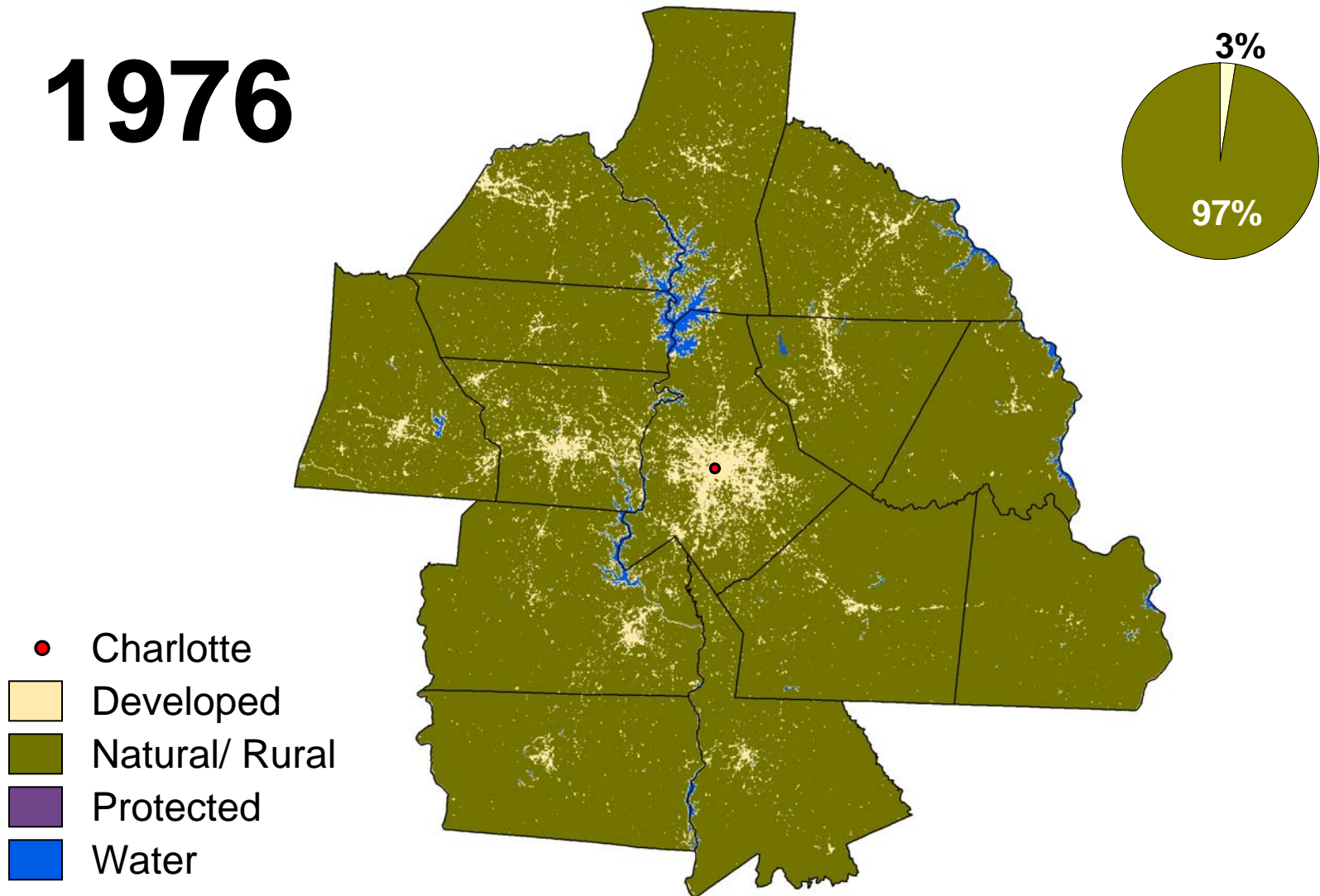
Demographics: Population Projections

- The Region is expected to add 400,000 people from 2000 to 2010 (the Region experienced an increase of 200,000 from 2000 to 2005)
- The projected regional population for 2030 is 3.3 million people

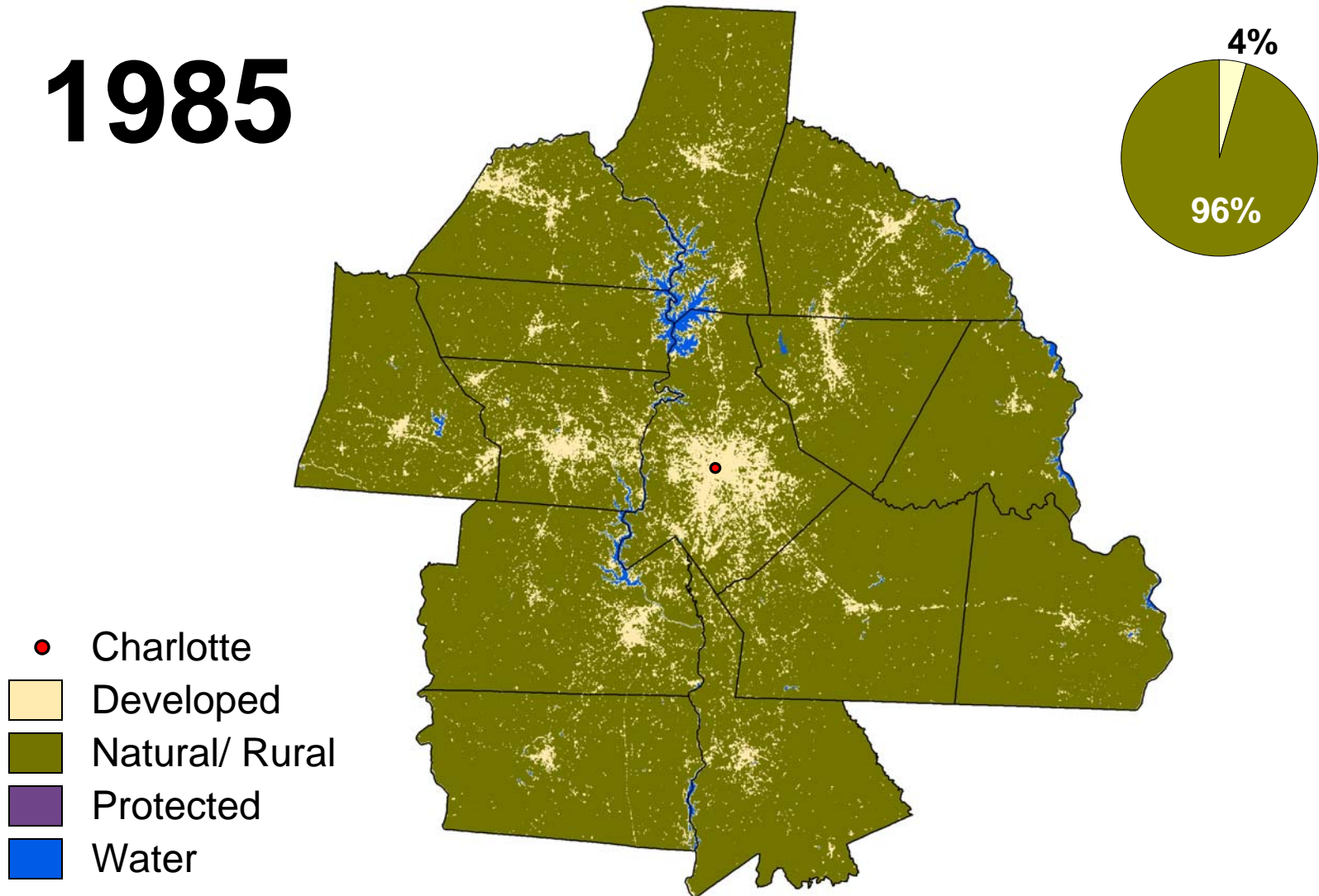


- Conversion of undeveloped land to development
- 1976, 1985, 1996, and 2006 satellite imagery
- Project funding from the Open Space Protection Collaborative (OSPC)
- Results:
 - 3% developed—1976
 - 23% developed—2006

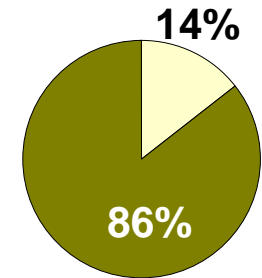
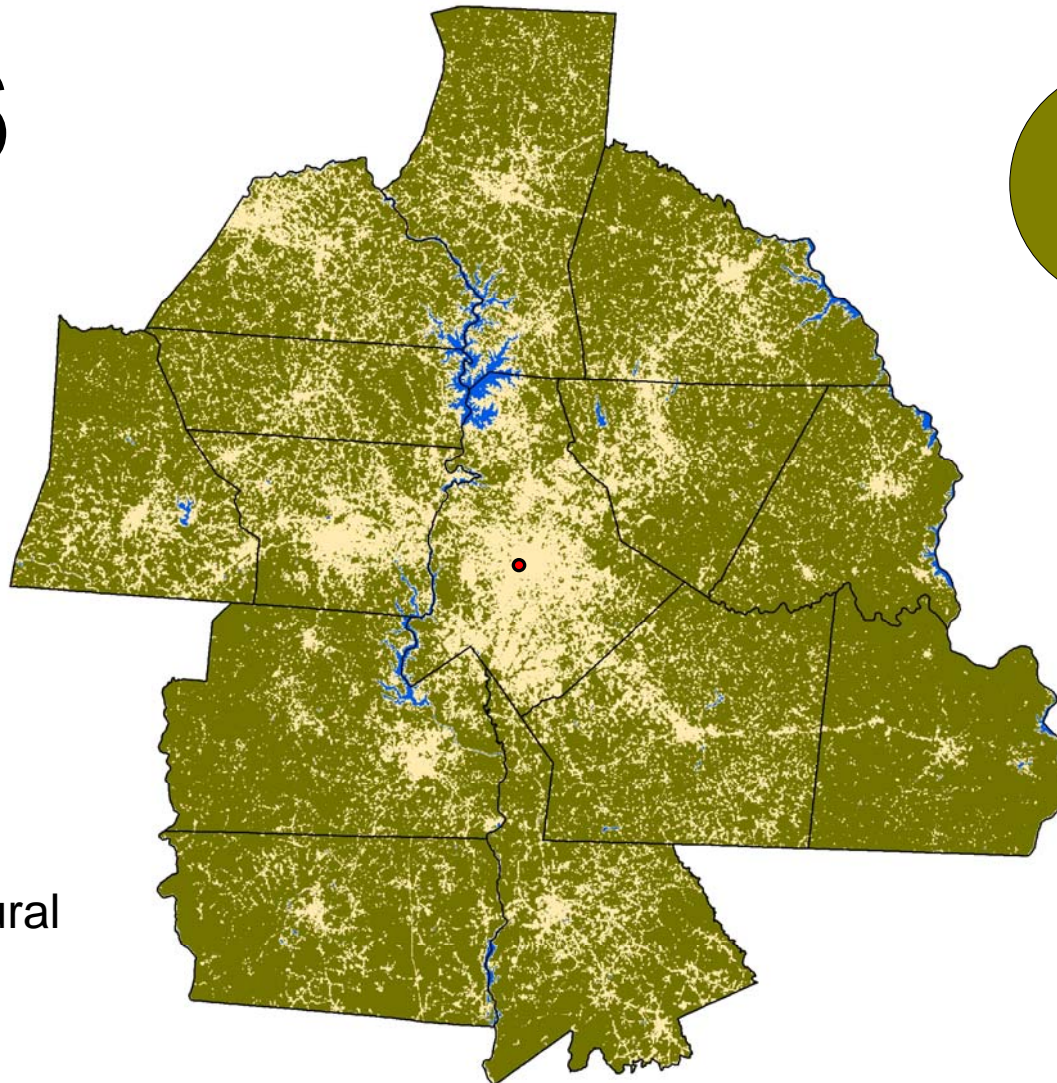
1976



1985

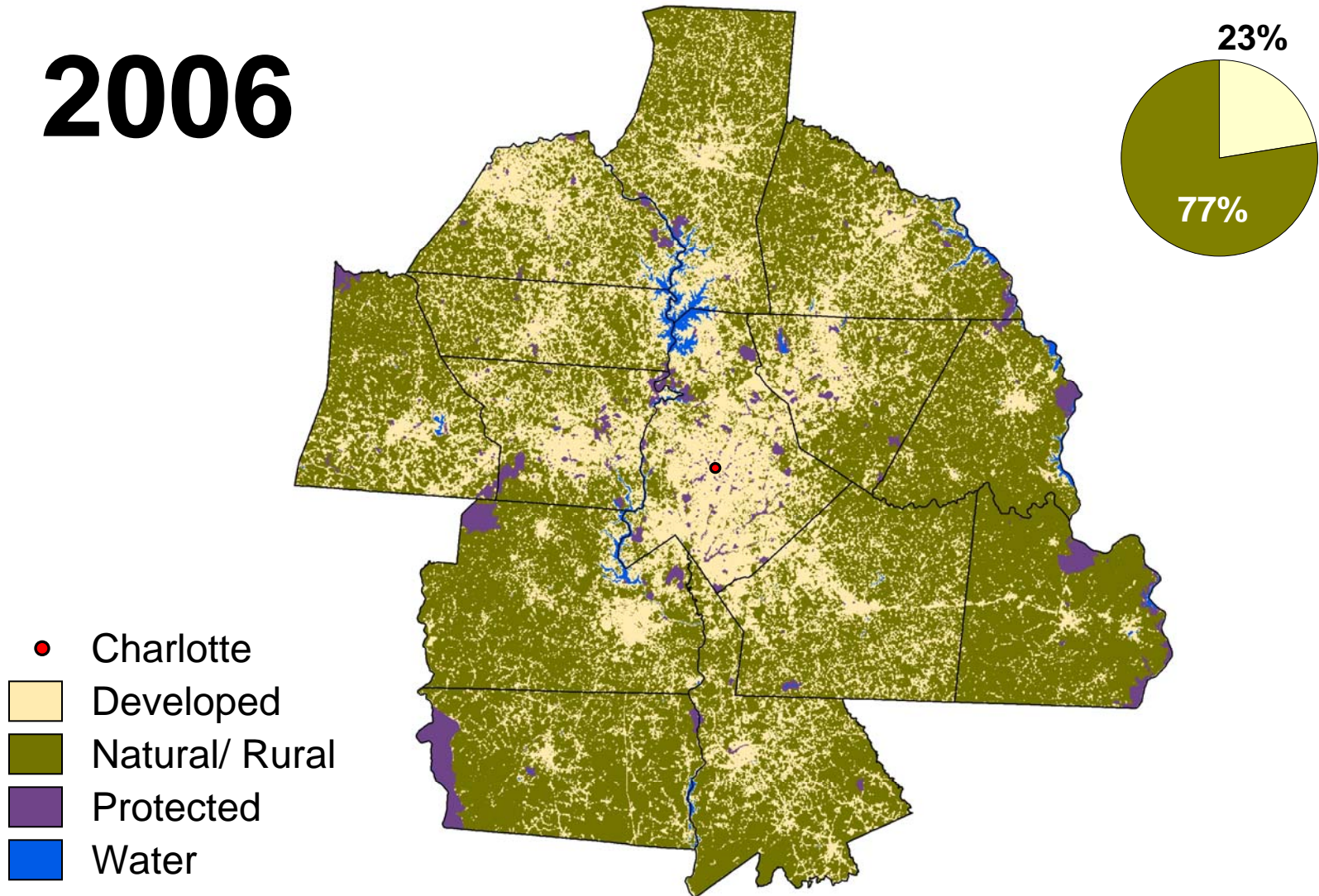


1996



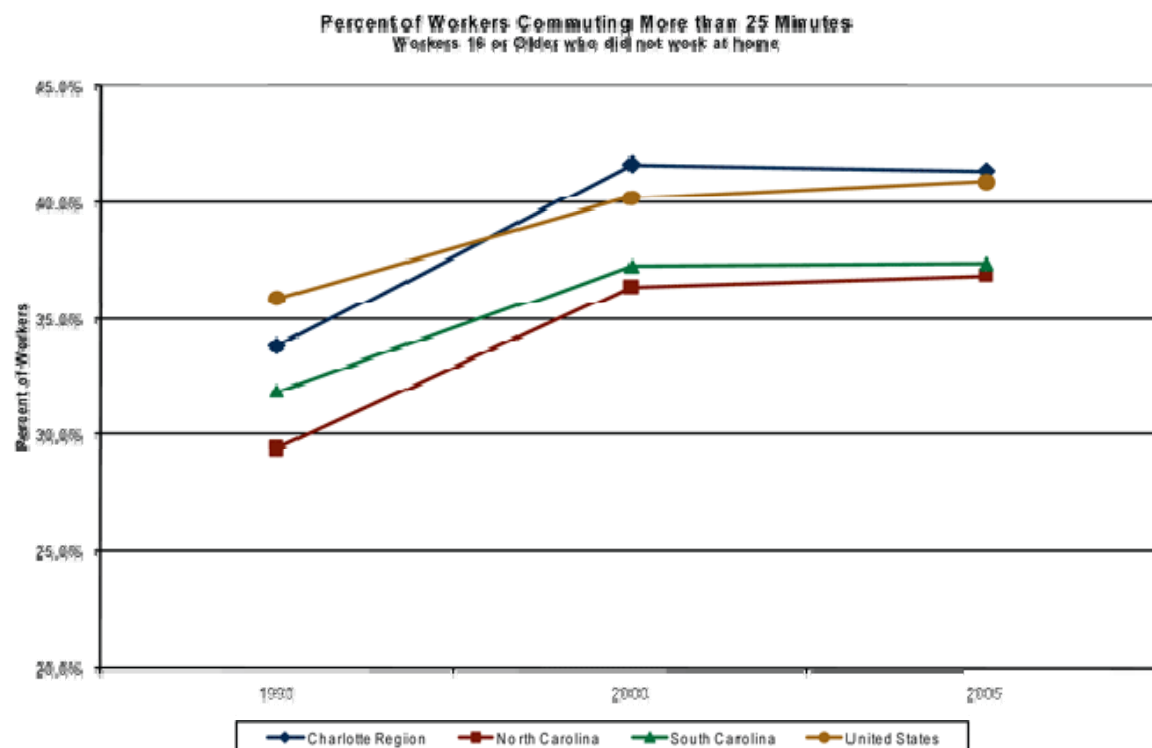
- Charlotte
- Developed
- Natural/ Rural
- Protected
- Water

2006



Transportation: Commuting Time

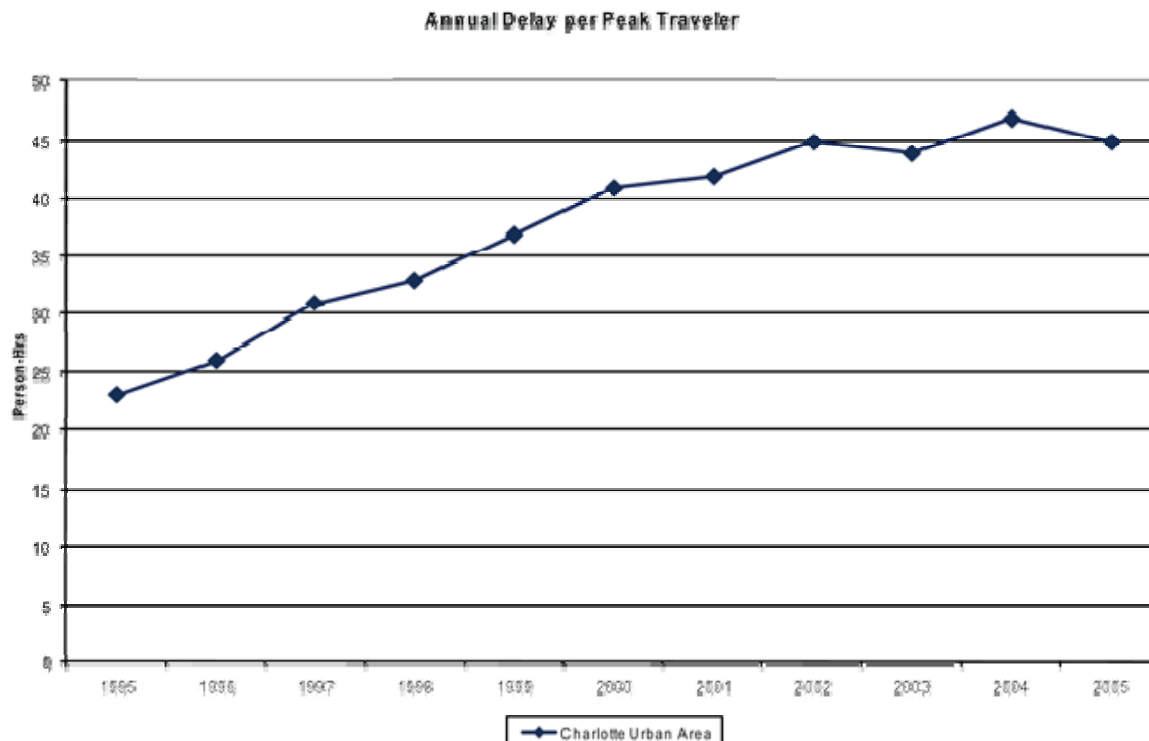
- In 2005, 41.5% of workers traveled more than 25 minutes to their jobs, up from 33.9% in 1990*



*10 county region – no data for Anson, Chester, Lancaster and Stanly counties

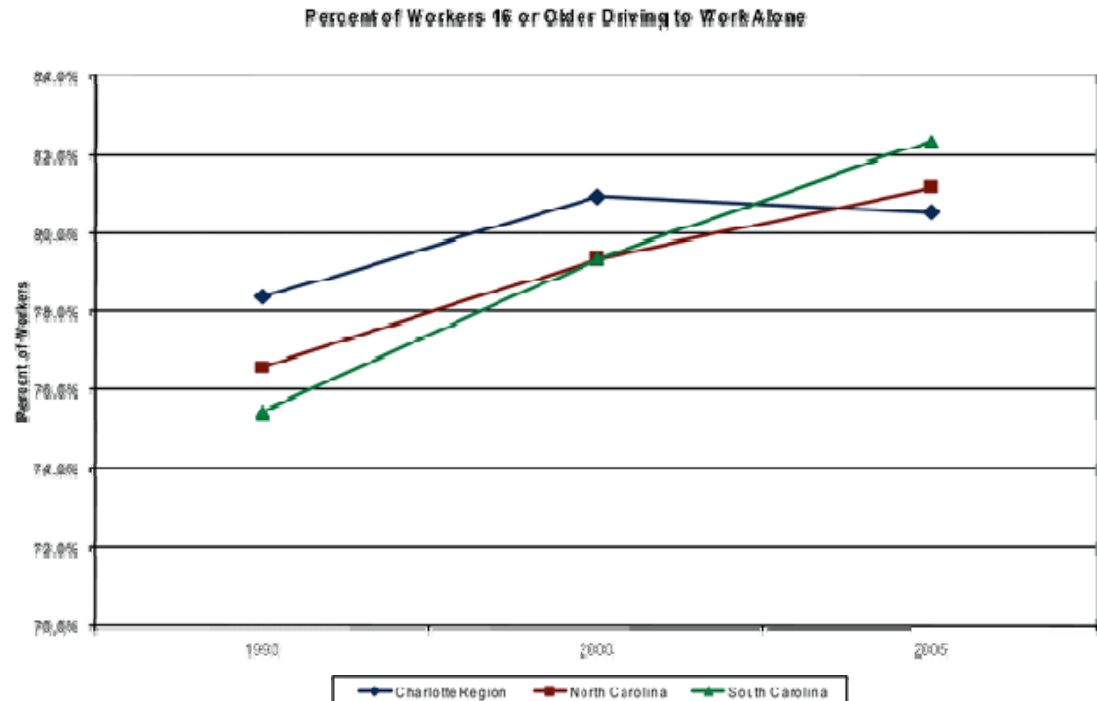
Transportation: Average Annual Delay Per Traveler

- The average peak traveler was delayed 45 hours in 2006
- Average annual delay per traveler in the Charlotte Urban Area nearly doubled from 1995 to 2005



Transportation: Commuting Alone

- In 2005, 80.5% of workers in the 10 county region commuted alone*

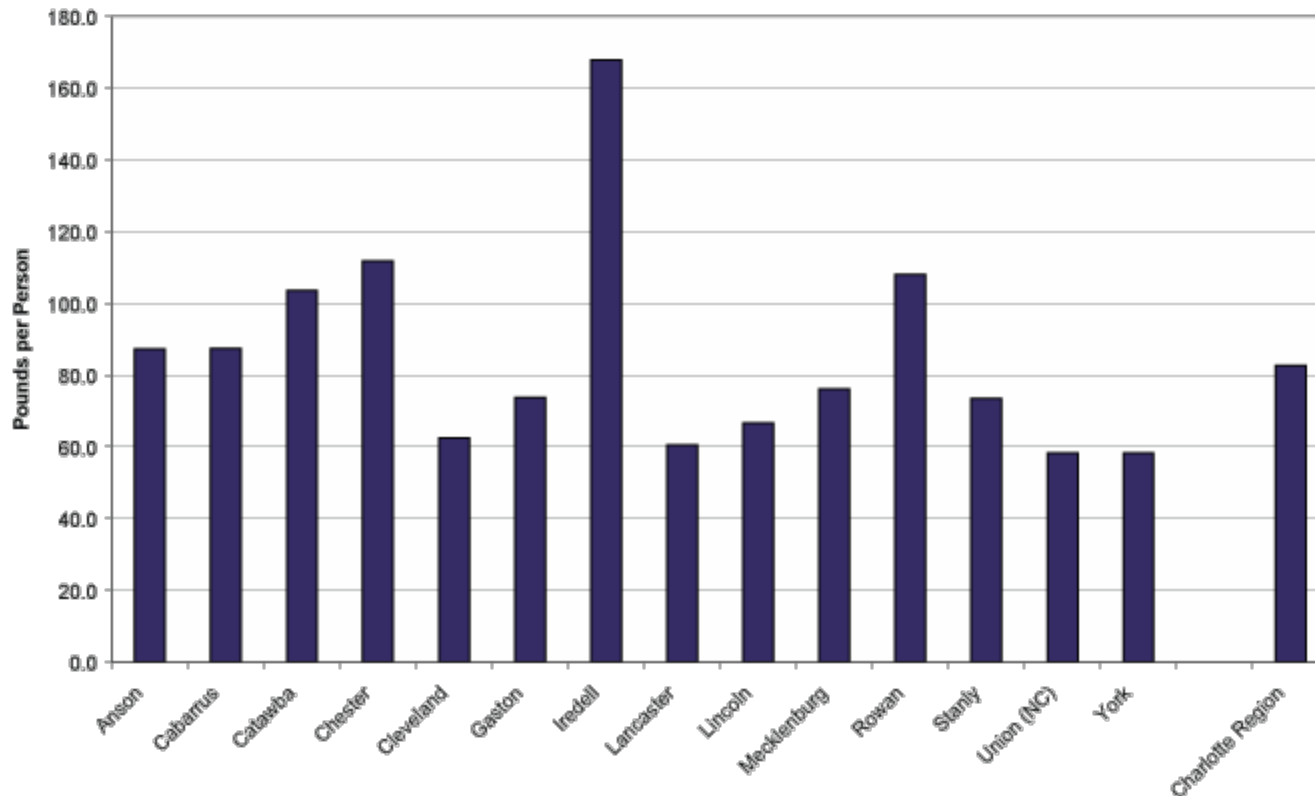


**No data for Anson, Chester, Lancaster and Stanly counties*

Environment: Vehicular Emissions

- Nitrogen oxides (NO_x) contribute to the production of ground-level ozone
- For 2000, vehicles in the region produced 82.8 lbs of NO_x per person

Per Capita On-Road Vehicular Emissions of Nitrogen Oxides (NO_x), 2002





21st Century Transportation Commission

Overview of Regional Growth

Jeff Michael, Director
UNC Charlotte Urban Institute

January 16, 2008

