

FOOD AND NUTRITION SERVICES

NC Division of Social Services

General Information

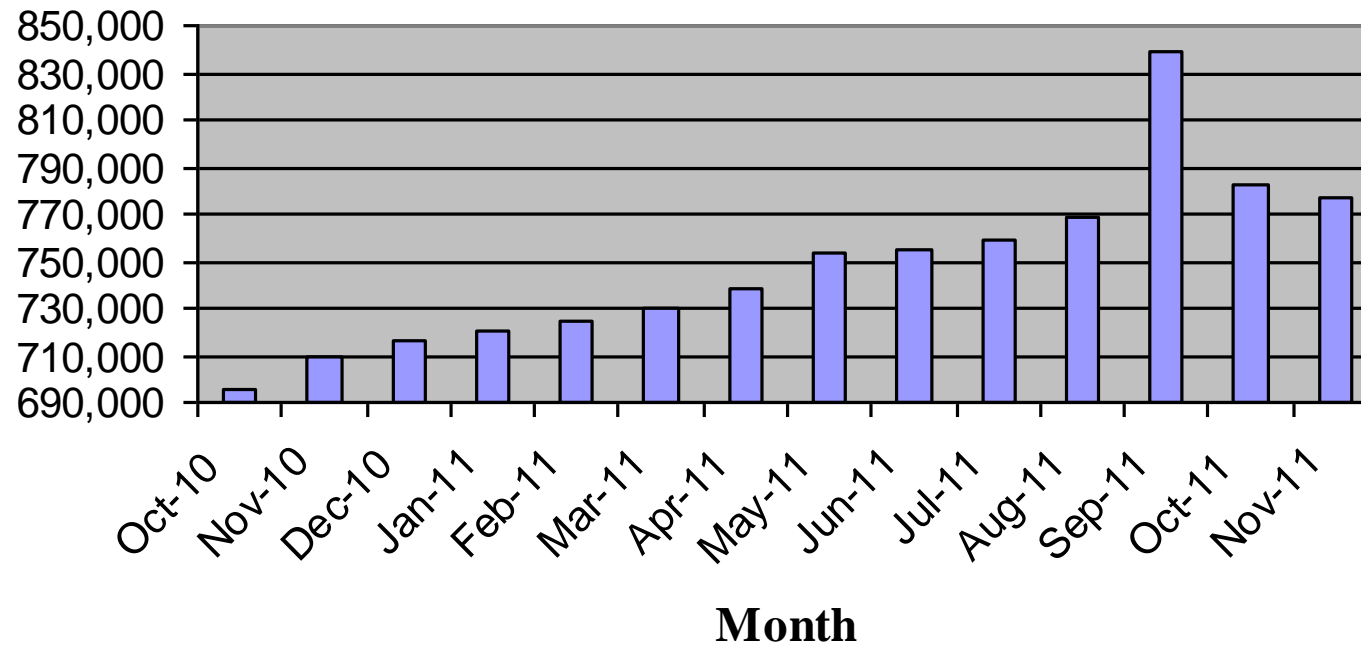
- Federal Food Assistance program
- Issued via EBT card
- Entitlement program
- Benefits accessed no later than thirty days or seven days for emergency situations

Food and Nutrition Services Caseload Information

Month	# of Households	# of Individuals in Household	# of Individuals 65 and older	# of Individuals less than 18	# of Children between 5 and 17
Oct-10	695,353	1,523,203	73,071	685,802	452,847
Nov-10	709,139	1,550,400	74,762	695,498	460,035
Dec-10	716,699	1,562,453	76,194	698,622	462,834
Jan-11	720,438	1,565,525	77,005	698,653	462,543
Feb-11	724,950	1,569,708	78,297	697,881	462,140
Mar-11	729,692	1,578,295	79,312	700,379	463,877
Apr-11	738,216	1,594,552	80,501	705,049	467,365
May-11	753,754	1,627,741	82,171	715,856	475,622
Jun-11	754,703	1,626,042	81,988	716,360	475,705
Jul-11	759,646	1,635,284	82,502	719,182	478,750
Aug-11	768,686	1,652,875	83,276	725,874	484,425
Sep-11	839,629	1,808,523	96,928	767,882	518,526
Oct-11	782,658	1,675,471	85,388	732,989	491,259
Nov-11	776,677	1,659,482	85,737	724,958	487,051

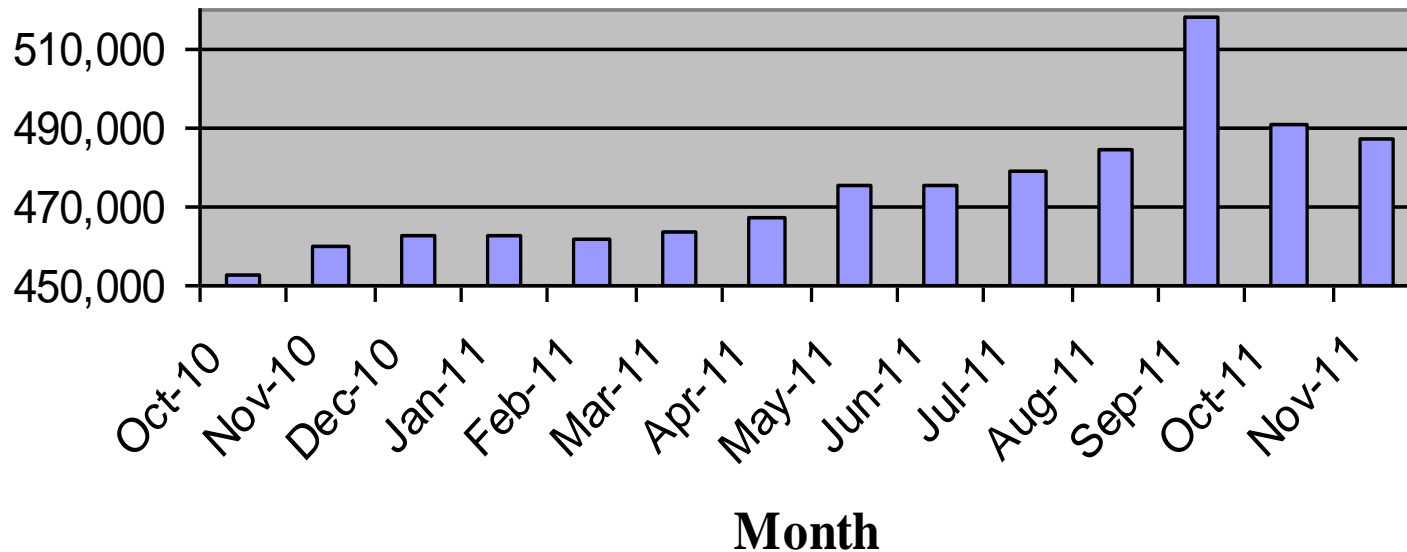
FNS Households by Month

Series1



FNS Children Between Ages 5 and 17

Series1



Eligibility Criteria

- Income
- Household Composition
- Citizenship/Immigration Status
- Resources

Income

- Households meet an income test based on household size
- NC residents can use an online screening tool called ePASS - <https://epass.nc.gov>.

Income Guidelines

<u>FNS Size</u>	<u>130% Maximum Gross Income</u>	<u>Maximum Benefit</u>
1	\$1,180	\$200
2	\$1,594	\$367
3	\$2,008	\$526
4	\$2,422	\$668
5	\$2,836	\$793
6	\$3,249	\$952
7	\$3,663	\$1,052
8	\$4,077	\$1,202
Each Add'l Member	(+414)	(+150)

Household Composition

- Individuals who purchase/prepare food together
- Spouses or individuals representing themselves as husband and wife
- Individuals under age 22 with parent
- Individuals under 18 with parental control adult
- Adults with mutual child

Citizenship/Immigration

- Must be U. S. Citizen, or
- Have specific immigration status, and
- Must meet all other eligibility requirements

Resources

- Less than \$2,000
- Less than \$3,000 if age 60 or older or disabled
- Some resources are excluded

Categorical Eligibility

- Categorically eligible FNSU's are subject to all FNS eligibility requirements with the exception of:
 - resource,
 - gross and net income limits.

Categorical Eligibility Criteria

- All members authorized to receive Work First Cash Assistance (WFFA), or all members receive a combination of WFFA and Supplemental Security Income (SSI) benefits.
- At least one member is **authorized to receive** service from Work First Employment Services
- All members authorized to receive SSI benefits
- Households income is at or below the 200% maximum allowable gross income limit and the household does not meet one of the criteria above. This is expanded categorical eligibility.

Rights

- Receive application
- Apply same day of request
- Access benefits within 30 days or 7 days
- Have a hearing if disagree with action



SNAP-Ed

(Supplemental Nutrition Assistance Program Education)





SNAP-Ed

- Optional to States under Federal Regulation 7 CFR 272.2
- Participating States submit a State Plan
- 100% Federally Funded





SNAP-Ed

- Healthy, Hunger-Free Kids Act of 2010
(Public Law 111-296)
- Nutrition Education and Obesity Prevention Grant Program
- Future Guidance: April 2012





SNAP-Ed

•SNAP-Ed Goal

- healthy food choices within a limited budget
- physically active lifestyles
- Dietary Guidelines for Americans and MyPlate

•SNAP-Ed Focus

- Eat Fruits and vegetables, whole grains and fat free or low-fat milk products each day
- Physical Activity
- Caloric intake
- Drinking water versus sugary drinks





SNAP-Ed

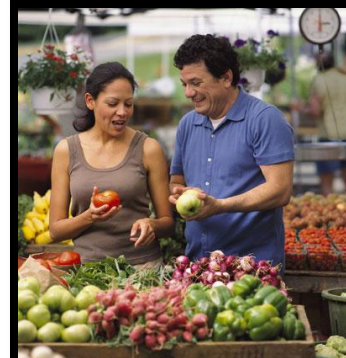
- Categories of SNAP-Ed recipients
 - Category 1 : Certified Eligibles
 - Category 2 : Likely Eligibles
 - Category 3 : Potentially Eligible by Site/Location





SNAP-Ed

- Alice Aycock Poe Center for Health Education
- Durham County Health Department
- NC Cooperative Extension Service – Surry Center
- NC State University
- University of NC @ Chapel Hill
- University of NC @ Greensboro





SNAP-Ed

Advisory Committee

Montreka Dansby – NC A&T State University
Robin Crowder – University of NC – Chapel Hill
Earline E. Middleton – Food Bank of Central & Eastern NC
Carolyn Dunn – NC Cooperative Extension, NCSU
Lynn Harvey – NC Dept. of Public Instruction
Audrey Edmisten – NC Division of Aging and Adult Services
Cathy Thomas – NC Division of Public Health, Physical
Activity & Nutrition Branch
Diane Beth - NC Division of Public Health
Katherine Andrew – Interfaith Food Shuttle
Lori Walston – Public Affairs, DHHS
Dean Simpson – Division of Social Services
Veronica Bryant – Division of Social Services

Crushonda Todd – USDA
Joi Hatch – USDA





SNAP-Ed

Advisory Committee

Primary Goals:

Update/Re-establish the State Nutrition Action Coalition

Developing Strategies for SNAP-Ed Expansion

SNAP-Ed proposals

Evidence based evaluation tool

Social marketing





SNAP-Ed

Collaboration

NC Farmers' Markets Nutrition Programs Integration Pilot Project :

Primary Goal:

- Decrease obesity and chronic disease rates through...
 - Fruit and vegetable consumption
 - Energy dense food consumption
 - Decreasing consumption of sugar-sweetened beverages
- By...
 - Making the healthy choice the easy and affordable choice
- Primarily Through...
 - Farmers' Markets,
 - Convenience Stores,
 - Community Gardens,
 - Farm to Institution,
 - Worksites





NC DSS Collaboration

NC Farmers' Markets Nutrition Programs Integration Pilot Project :

State-level programs joined together to integrate program and policy planning, cross-promotions, marketing and nutrition education among three USDA-affiliated programs:

- WIC Farmers' Market Nutrition Program
- Senior Farmers' Market Nutrition Program
- 21st Century Farmers' Market Program





NC DSS

Collaboration

NC Farmers' Markets Nutrition Programs Integration Pilot Project :

State Partners:

- **NC Department of Agriculture & Consumer Services**
 - Division of Marketing
- **NC Department of Health & Human Services**
 - Division of Aging
 - Division of Public Health
 - Nutrition Services Branch
 - **Physical Activity & Nutrition Branch**
 - (project lead)
 - Division of Social Services
- **The Leaflight, Inc**
 - Administers the 21st Century Farmers Market Program (SNAP EBT, Debit & credit)





NC DSS

Collaboration

Farmers' Market Pilot Counties

- Columbus (Columbus County Community FM)
- Davidson (Lexington FM)
- Onslow (Onslow County FM)
- Orange (Carrboro FM)
- Rowan (Salisbury FM)
- Watauga (Watauga County FM)
- Yancey (Yancey County FM)





? QUESTIONS ?

