

Mountain Island Charter School

Serving The Mountain Island
Community

Justin H. Matthews, M.Ed.
Executive Director

Mountain Island Charter Overview

- 1480 Students in a comprehensive K-12 program
- Servicing mainly 3 Counties:
 - Mecklenburg, Gaston and Lincoln
- 200+ Full and Part Time Staff
- Full Service Breakfast and Lunch Program
- Over 400 bus riders and 80 student drivers
- Internationally Accredited through AdvancED
- Diploma Recognized and Approved by NCAA
- Over 100 Sports, Clubs and Extracurriculars
- Over 200 Community Events on Campus Annually

MICS Academic Program

Three academic tracks designed to support academic needs and career interests: College Preparatory, Career Preparatory, Occupational Course of Study

Advancement opportunities through Honors, Advanced Placement, and Dual Enrollment courses

Elective Areas: Fine and Performing Arts, World Language, Communication, Science & Technology, Health, Physical Education and Sports



School Safety Measures

School Safety and Crisis Response Plan

- Annually Reviewed
- Regular Drills-Live and Tabletop
- Highly Visible Leadership and SRO/Security
- Anonymous Tip Line
- Developing AI-integrated Firewall

***Promote
Vigilance and Consistency***

Continue Legislating Safety

SL 2018-72: Protect Educational Property

Grants that Improve Safety Outcomes for both Individual and Whole School: SRO and Mental Health Grants

Monitor Impact of The Juvenile Justice Reinvestment Act/Raise The Age Initiative

Legislative Platform Development

HB 938: Various School Safety Changes Would require all public schools, including charters to meet all the school safety requirements that exist for public schools under the control of a local board of education.

Consider: all charters also must follow emergency plan of Local Board of Education (school closure/delay).

Charter School Facilities could be used as shelters or for emergency drills.

SL 2018-5: Appropriations

Charter Schools May Request and Receive Funds from Municipalities

- Municipalities are authorized, but not required, to appropriate property tax revenues or other unrestricted revenues to fund public education, so long as it benefits residents of the municipality.
- Charter schools are eligible to request and receive these municipal funds if the charter school serves residents of that municipality.









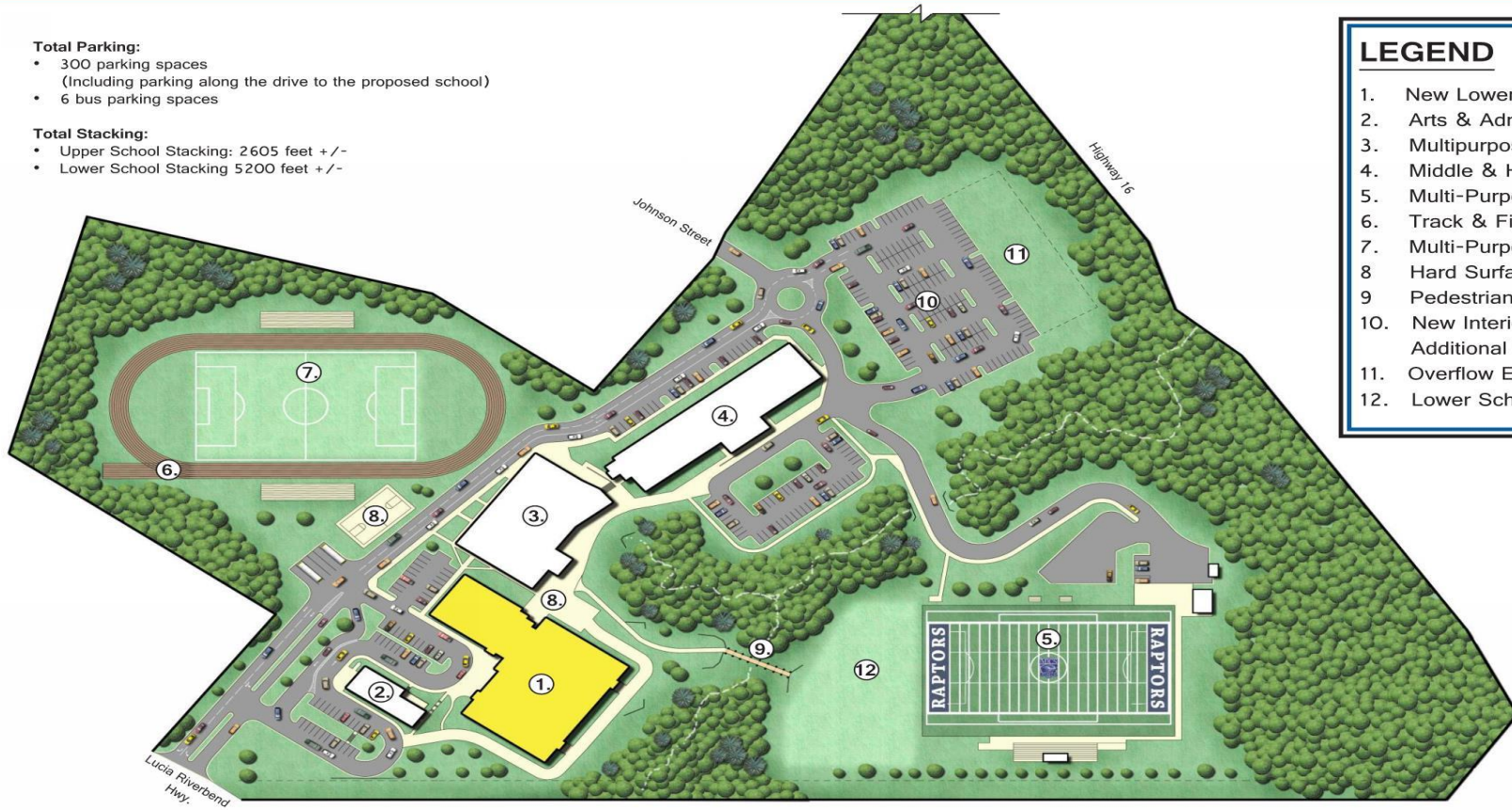
Home		Guests	
Points	15	Points	12
Reb.	10	Reb.	8
Ass.	5	Ass.	3
St.	2	St.	1
FT	10/15	FT	8/10
3PT	5/10	3PT	3/5
Time	10:00	Time	10:00
Q1	10-15	Q1	8-12
Q2	10-15	Q2	8-12
Q3	10-15	Q3	8-12
Q4	10-15	Q4	8-12
Total	50-45	Total	40-35

Total Parking:

- 300 parking spaces
(Including parking along the drive to the proposed school)
- 6 bus parking spaces

Total Stacking:

- Upper School Stacking: 2605 feet +/-
- Lower School Stacking 5200 feet +/-



LEGEND

1. New Lower School
2. Arts & Administration Building
3. Multipurpose Building
4. Middle & High Schools
5. Multi-Purpose Sports Stadium
6. Track & Field Events Area
7. Multi-Purpose Athletic Field
8. Hard Surface Play Areas
9. Pedestrian Bridge
10. New Interior Traffic / Additional Parking
11. Overflow Event Parking
12. Lower School Play Area

North



Graphic Scale



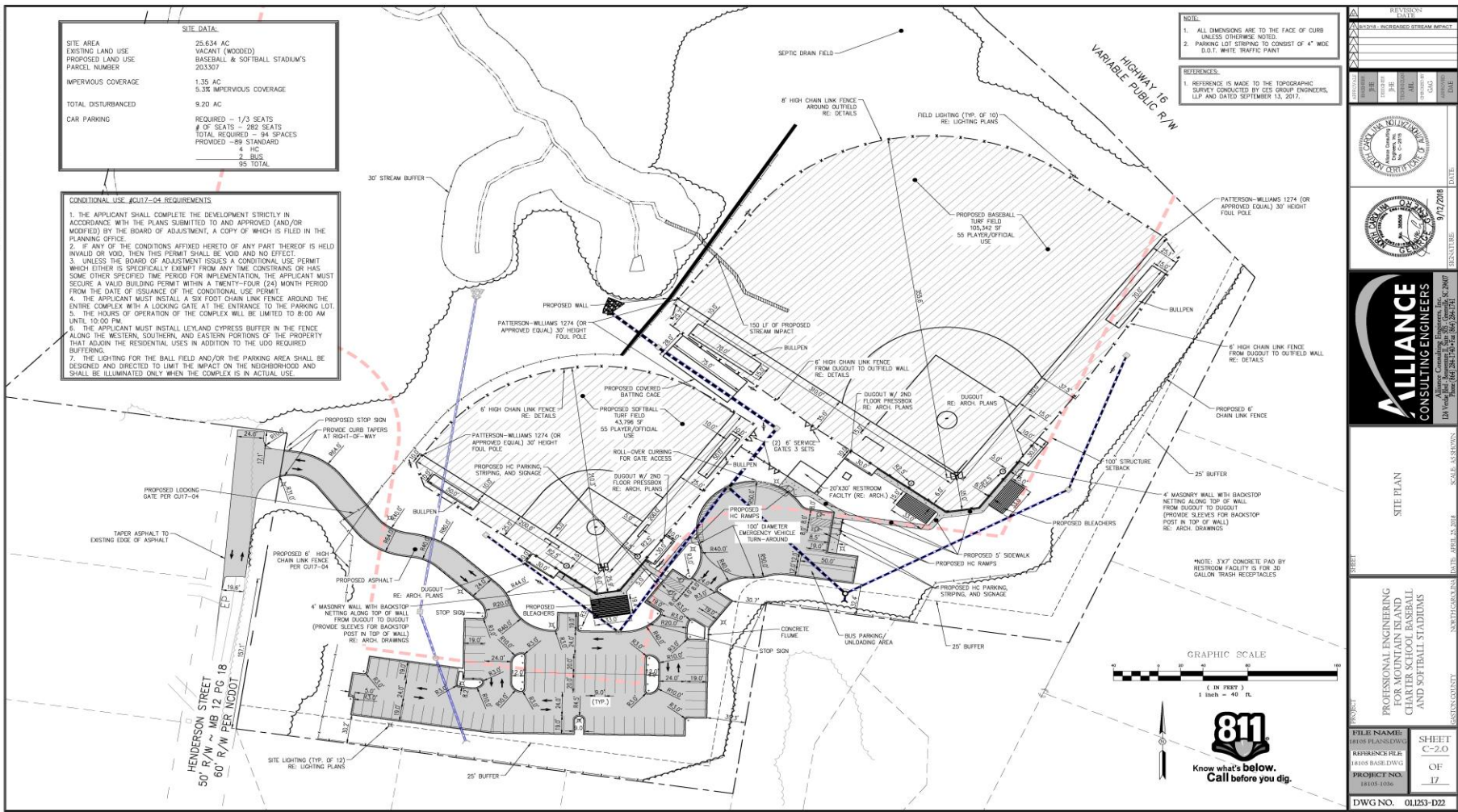
CAMPUS MASTER PLAN
MOUNTAIN ISLAND CHARTER SCHOOL



SITE DATA	
SITE AREA	25.634 AC
EXISTING LAND USE	VACANT (WOODED)
PROPOSED LAND USE	BASEBALL & SOFTBALL STADIUM'S
PARCEL NUMBER	203307
IMPERVIOUS COVERAGE	1.35 AC
	5.3% IMPERVIOUS COVERAGE
TOTAL DISTURBED	9.20 AC
CAR PARKING	
REQUIRED - 1/3 SEATS	
# OF SEATS - 282 SEATS	
TOTAL REQUIRED - 94 SPACES	
PROVIDED - 89 STANDARD	
HC	
2 BUS	
95 TOTAL	

CONDITIONAL USE #2017-04 REQUIREMENTS

1. THE APPLICANT SHALL COMPLETE THE DEVELOPMENT STRICTLY IN ACCORDANCE WITH THE PLANS SUBMITTED TO AND APPROVED (AND/OR MODIFIED) BY THE BOARD OF ADJUSTMENT, A COPY OF WHICH IS FILED IN THE PLANNING OFFICE.
2. IF ANY OF THE CONDITIONS AFFIXED HERETO OF ANY PART THEREOF IS HELD INVALID OR VOID, THEN THIS PERMIT SHALL BE VOID AND NO EFFECT.
3. UNLESS THE BOARD OF ADJUSTMENT ISSUES A CONDITIONAL USE PERMIT WHICH EITHER IS SPECIFICALLY EXEMPT FROM ANY TIME CONSTRAINTS OR HAS SOME OTHER SPECIFIED TIME PERIOD FOR IMPLEMENTATION, THE APPLICANT MUST SECURE A VALID BUILDING PERMIT WITHIN A TWENTY-FOUR (24) MONTH PERIOD FROM THE DATE OF ISSUANCE OF THE CONDITIONAL USE PERMIT.
4. THE APPLICANT MUST INSTALL A SIX FOOT CHAIN LINK FENCE AROUND THE ENTIRE COMPLEX WITH A LOOKING GATE AT THE ENTRANCE TO THE PARKING LOT.
5. THE HOURS OF OPERATION OF THE COMPLEX WILL BE LIMITED TO 8:00 AM UNTIL 10:00 PM.
6. THE APPLICANT MUST INSTALL LEYLAND CYPRESS BUFFER IN THE FENCE ALONG THE WESTERN, SOUTHERN, AND EASTERN PORTIONS OF THE PROPERTY THAT ADJOIN THE RESIDENTIAL USES IN ADDITION TO THE UDD REQUIRED BUFFERING.
7. THE LIGHTING FOR THE BALL FIELD AND/OR THE PARKING AREA SHALL BE DESIGNED AND DIRECTED TO LIMIT THE IMPACT ON THE NEIGHBORHOOD AND SHALL BE ILLUMINATED ONLY WHEN THE COMPLEX IS IN ACTUAL USE.



NOTE	
1.	ALL DIMENSIONS ARE TO THE FACE OF CURB UNLESS OTHERWISE NOTED.
2.	PARKING LOT STRIPING TO CONSIST OF 4" WIDE D.O.T. WHITE TRAFFIC PAINT

REFERENCES:

1. REFERENCE IS MADE TO THE TOPOGRAPHIC SURVEY CONDUCTED BY CES GROUP ENGINEERS, LLP AND DATED SEPTEMBER 15, 2017.

REVISIONS

NO.	DESCRIPTION	DATE

DATE: 9/17/2018

RESUBMITTED:

ALLIANCE CONSULTING ENGINEERS, INC.

Alliance Consulting Engineers, Inc.
124 Westwood Blvd., Suite 200, Westwood, NJ 07675
Tel: 201-261-1400 Fax: 201-261-1401

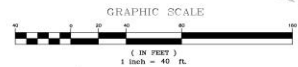
SITE PLAN

SCALE: AS SHOWN

PROJECT: PROFESSIONAL ENGINEERING FOR MOUNTAIN ISLAND CHARTER SCHOOL BASEBALL AND SOFTBALL STADIUMS EASTON COUNTY

FILE NAME: 18105.BASR.DWG
AUTHOR: JLR
DATE: 11/05/18
PROJECT NO.: 18105.1036

SHEET: C-2.0
OF: 17
DWG NO.: 01,023-122



Invest in Extracurriculars

Student Government Clubs and Social Groups

Keep Students Engaged and Connected

Student Leadership Initiative

- Over 100 Students currently participating in authentic service and leadership roles within the school
- Key Club
- National Honor Society
- Civil Air Patrol
- Robotics Club



Fall- Football, volleyball, men's soccer, cross country, cheerleading

Winter- men's and women's basketball, cheerleading, swimming, wrestling, Indoor Track and Field

Spring- Women's soccer, golf, baseball, softball, lacrosse, Outdoor Track and Field

