

NC Center for Safer Schools



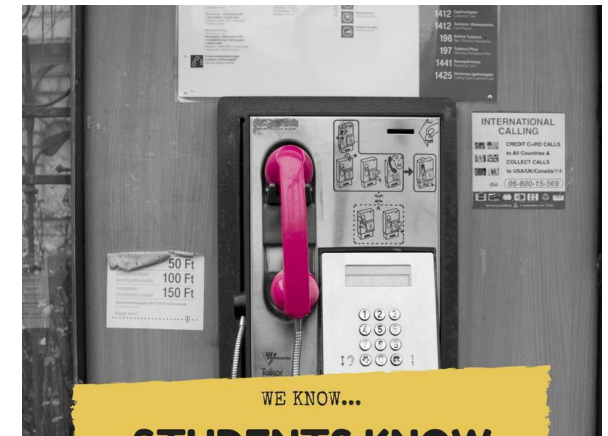
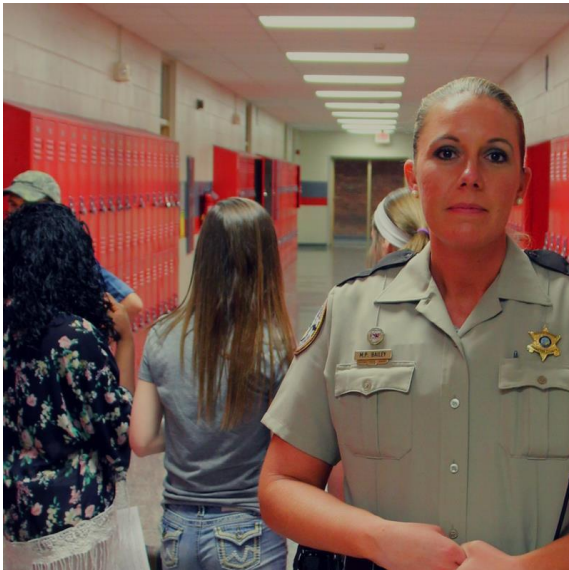
**N.C. Department of Public Instruction
School Operations**

Remembering Where We Began



Results: The Big 3

- The value & need for SROs
- Collaboration among agencies
- A better system of communication between students and school personnel



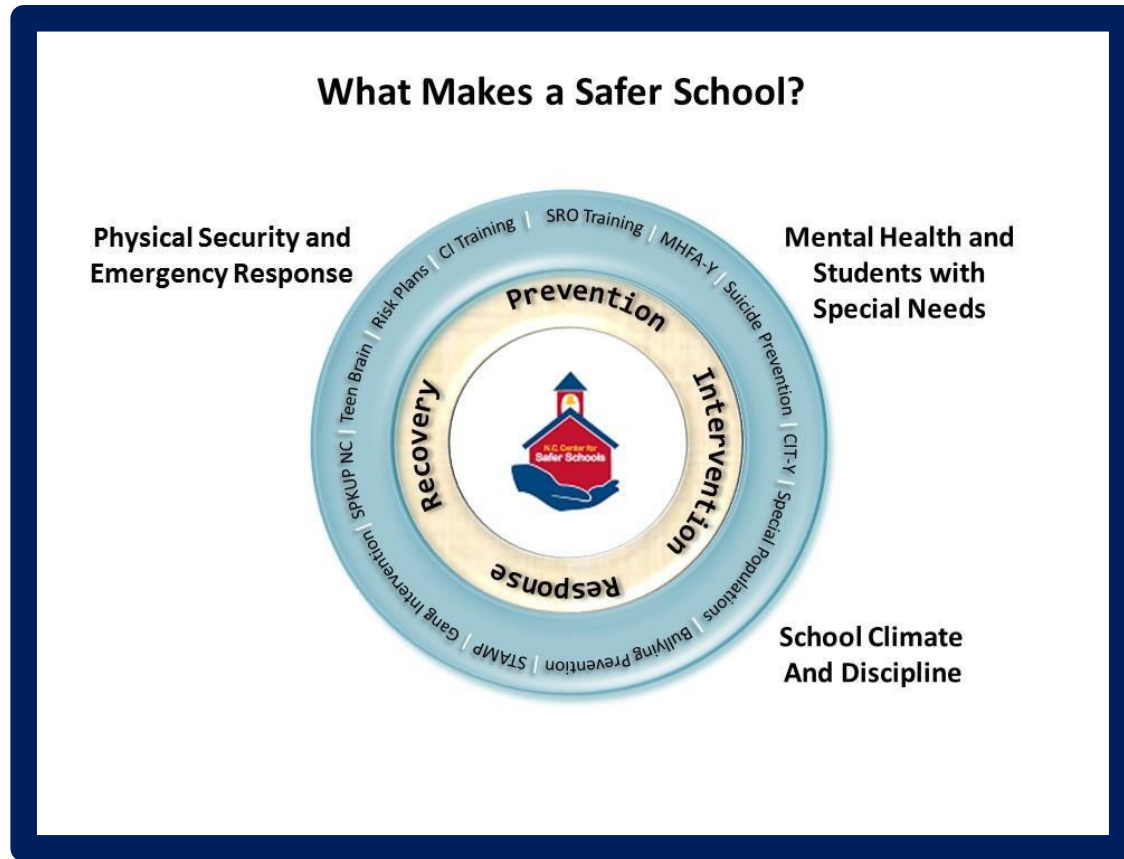
Students SEE. Students HEAR.
How can we facilitate a safe way to report?

School Safety Legislation: 2013

Session Law 2013 - 360

- GRANTS FOR SCHOOL RESOURCE OFFICERS IN ELEMENTARY AND MIDDLE SCHOOLS
- PANIC ALARM SYSTEMS
- SCHOOL SAFETY EXERCISES
- SCHEMATIC DIAGRAMS OF SCHOOL FACILITIES
- ANONYMOUS TIP LINE
- SCHOOL SAFETY COMPONENT OF SCHOOL IMPROVEMENT PLAN
- CRISIS KITS
- SCHOOL SAFETY FOR CHARTER SCHOOLS AND REGIONAL SCHOOLS

NC: A New Look At School Safety



Physical Security and Emergency Response

- Critical Incident Response Training
- SRO Training
- School Risk Management System

Mental Health

- Mental Health First Aid - Youth
- School Based Mental Health
- Suicide Toolkit

School Climate

- Bullying & Cyberbullying
- Anonymous Reporting for Students / SpkUp
- Student Tutoring and Mentoring Program

Evaluating Where We Are Now



School Risk and Response Management

Joint Legislative Committee on Safer Schools

March 21, 2018

John Dorman



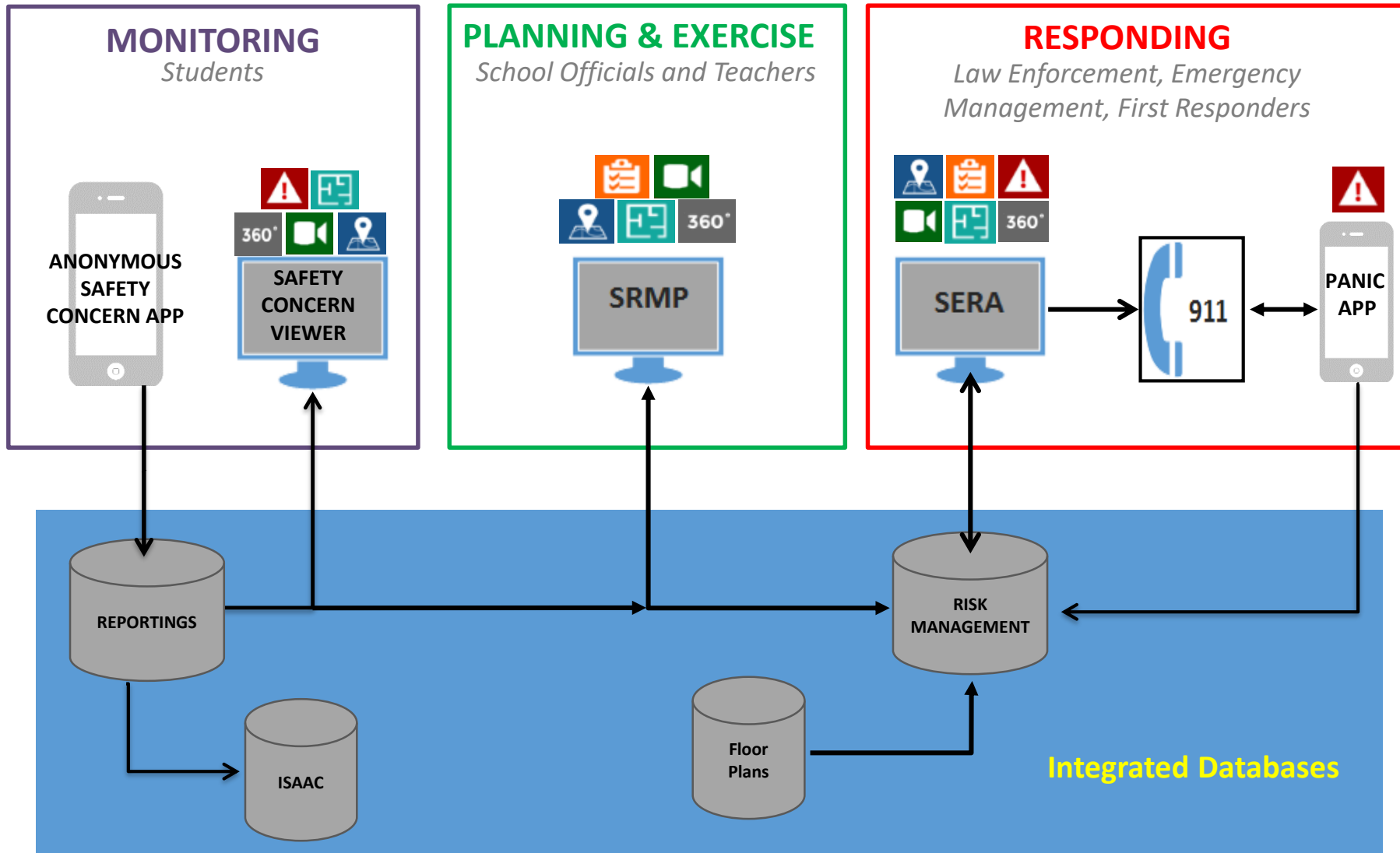
School Risk and Response Management System

- Recommended by Governor's Task Force on Safer Schools - 2013
- Enacted in legislation by NC General Assembly in 2014 and 2015
- Six (6) primary components to the School Risk and Response Management System (*Session Law 2015-241*):
 - Acquisition and incorporation of site specific school facility data / information into iRISK database (~ 2,300 Public Schools) - [NCEM](#)
 - Digital School Risk Management Planning Tool (SRMP) - [NCEM](#)
 - School Emergency Response Application (SERA) - [NCEM](#)
 - Anonymous School Safety Tip (SPK UP NC) – [DPI-CSS](#)
 - Digital Panic Alarm Application – [NCEM](#)
 - Training, Exercise and Drills – [DPI – CSS / NCEM](#)
 - All components are spatial, digital and secure
- K-12 schools are one component of a larger endeavor to utilize SERA for disseminating and displaying data, information and floor plans / assets to law enforcement, emergency management, and first responders for:
 - Community Colleges and Technical Institutes;
 - Universities;
 - High and Intermediate Hazard Dams;
 - State Government Buildings.

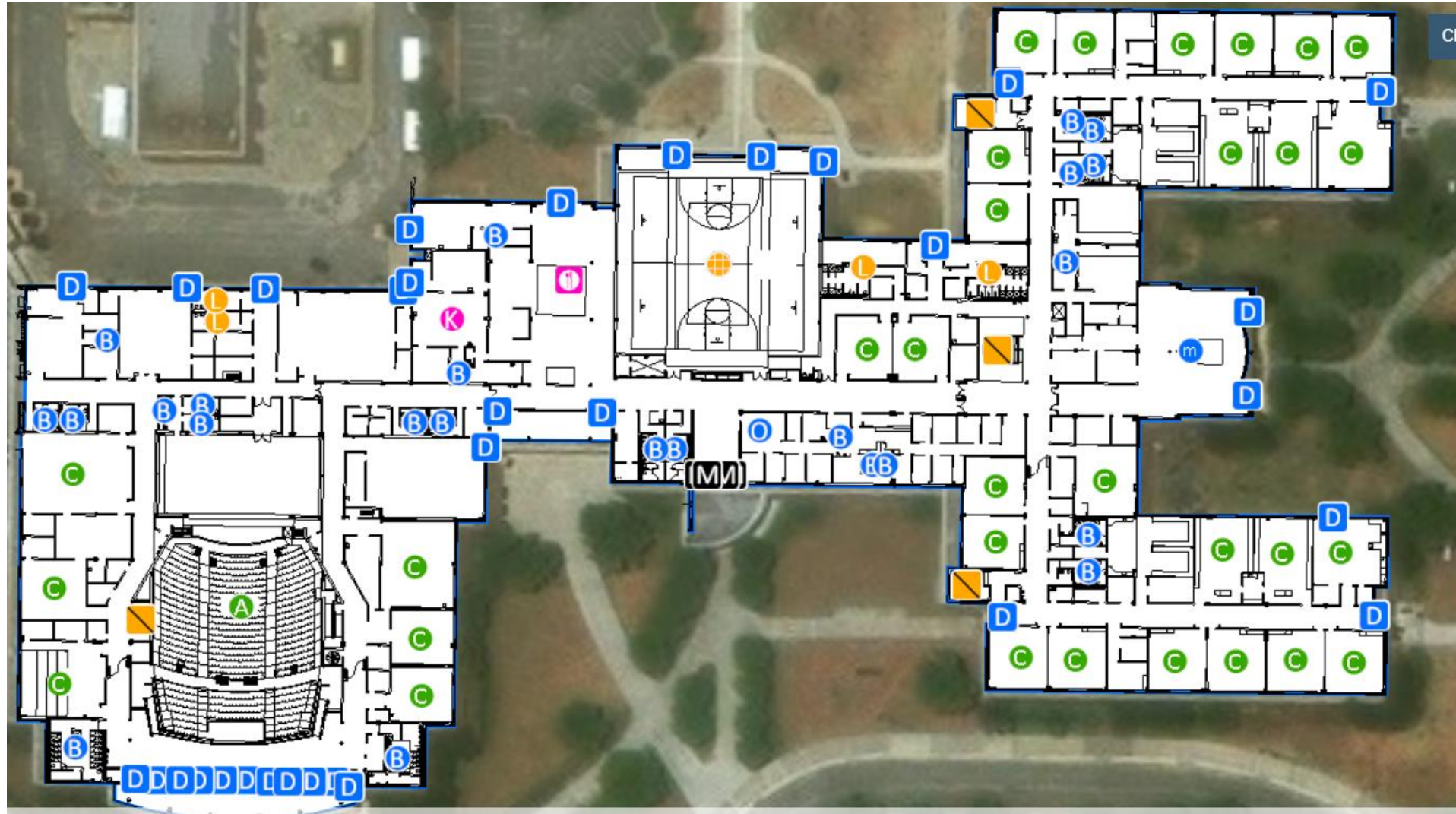


School Risk and Response Management Framework

Vision Build Out



DIGITAL SCHOOL FLOOR PLANS / SCHEMATICS



DIGITAL SCHOOL FLOOR PLANS / SCHEMATICS



Risk Management Planning Applications



K-12 Schools

- Building Assets/Floorplans
- School Profile
- Administrator Contacts
- Response Procedures

Community Colleges

- Campus location
- Building Assets/Floorplans
- Building Populations
- Response Procedures

State Government

- Building Contacts
- Building Assets/Floorplans
- Building Populations
- Response Procedures

Dams

- Inundation Data
- Dam Profile
- Estimated Impacts
- Event Action Plans
- Notification Flow Charts

Universities

- Campus location
- Building Assets/Floorplans
- Building Populations
- Response Procedures

Prisons

- Prison location
- Building Assets/Floorplans
- Contact Information
- Response Procedures

Hazardous Materials – High and Intermediate

- Storage / Generation location
- Building Floorplans / Location of Materials
- Contact Information
- Hazardous Materials - Profile
- Response Procedures

Homeland Security – Special Events / Gatherings

- Building Floorplans / Line of Site
- Contact Information
- Tactical- Profile
- Response / Recovery Procedures

Hospitals / Health Care Facilities

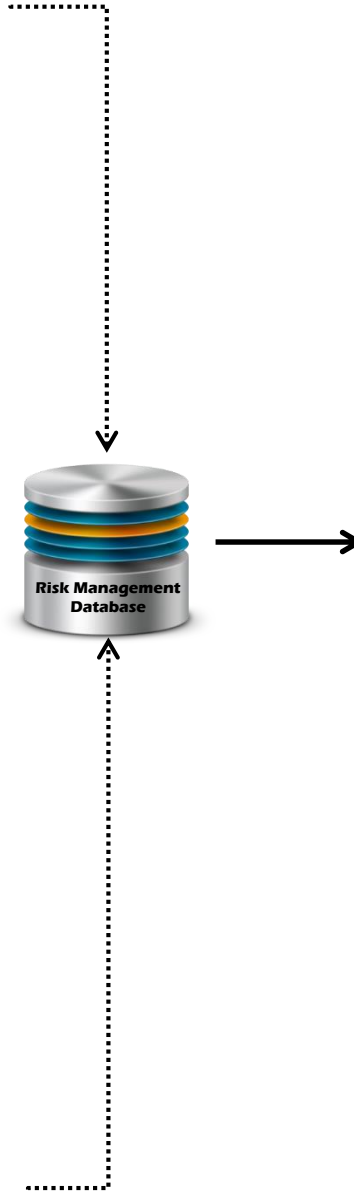
- Building Floorplans
- Contact Information
- Patient / Care - Profile
- Response / Recovery Procedures

Airports

- Building Floorplans
- Contact Information
- Tactical- Profile
- Response / Recovery Procedures

State Emergency Response Application

Build Out Vision



SERA Application

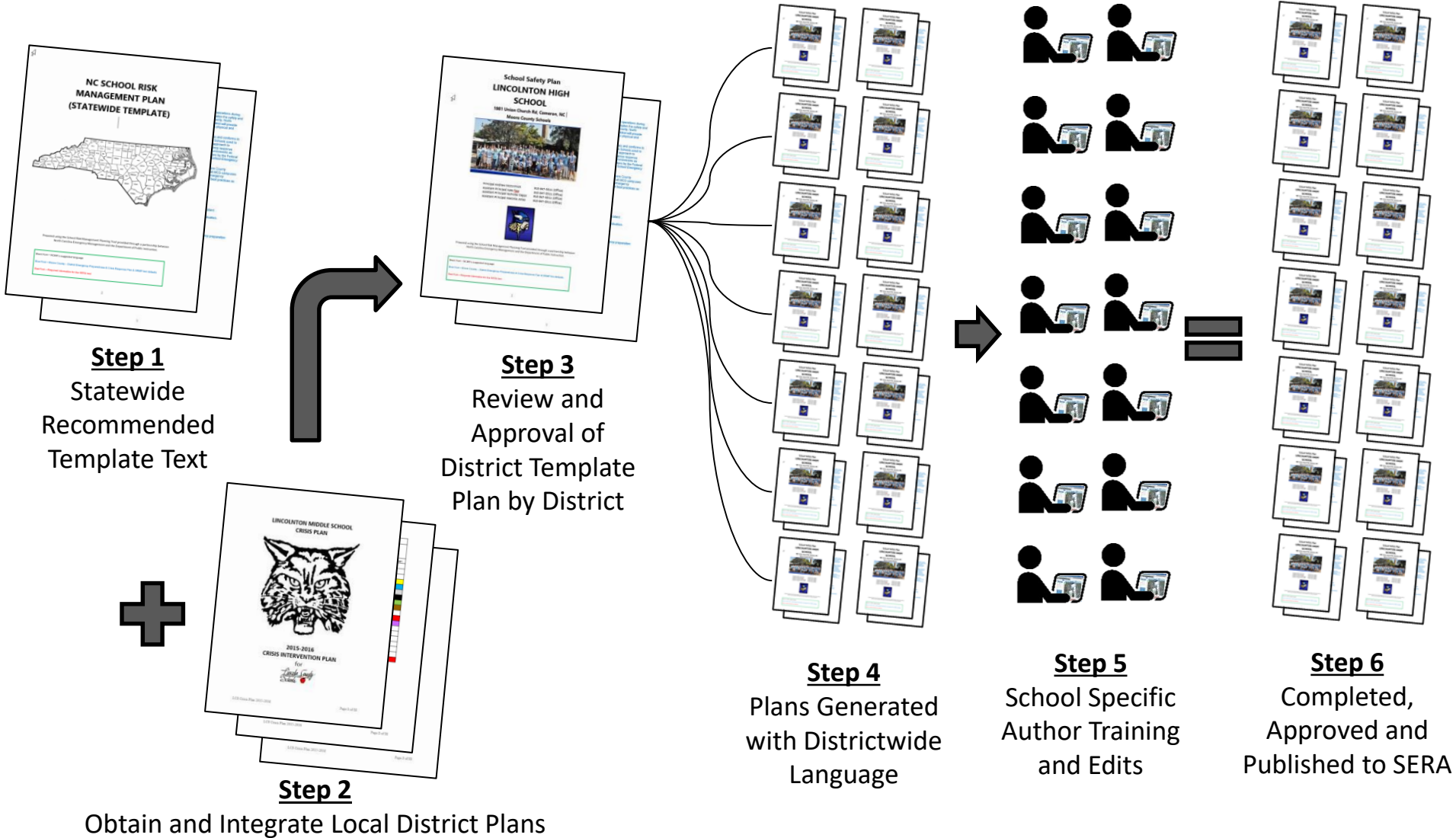


Accessible via NCID / CJLEADS to:

- State Highway Patrol
- State Bureau of Investigation
- Law Enforcement
- Emergency Management
- First Responders

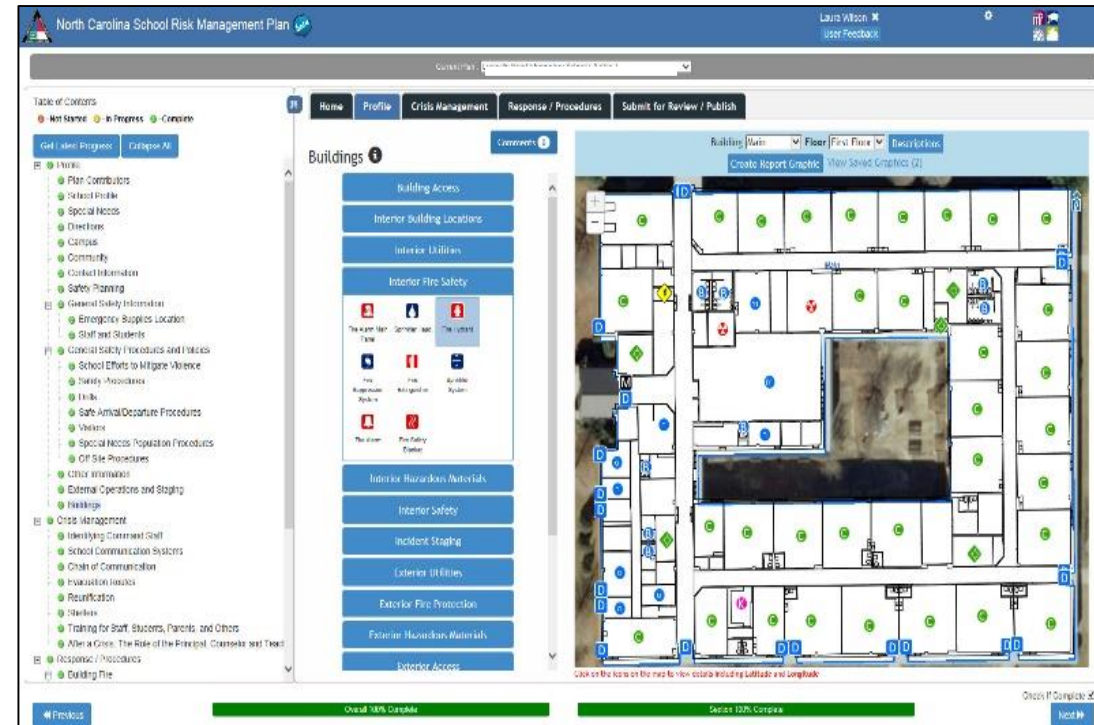


School Risk Management Planning - Process



School Risk Management Planning – Profile

- The School Risk Management Planning (SRMP) tool is a password protected, spatially-enabled applications that facilitates and collects pertinent information regarding school:
 - School Profile (Address, type of school)
 - Population (students, teachers, special needs);
 - Points of Contact (email, phone and text);
 - Buildings and Assets (classrooms, cameras, staging areas);
 - Communication Infrastructure;
 - Crisis Management;
 - Strategies and Procedures Addressing Hazards and Threats
- The data and information collected and published in SRMP is seamlessly displayed in SERA.
- As data and information is maintain and modified in SRMP, the tool can auto-generated a new School Risk Management Plan on demand.



School Risk Management Planning – Hazards / Threats

- The School Risk Management Planning tool and process facilitates and collects strategies associated with prevention, preparedness, response, recovery and mitigation of any hazard and threat.
- Response and recovery procedures are displayed in SERA.
- The following hazards / threats are defaults in SRMP:
 - **Natural**
 - Earthquake
 - Flooding
 - Severe Weather
 - Tornado
 - Wildfire
 - Animal Disturbance
 - Others.....
 - **Accidental**
 - Aircraft Crash
 - Building Fire
 - Chemical Release
 - Explosion
 - Others.....
 - **Intentional**
 - **Active Shooter**
 - Bomb Threat
 - Explosion
 - Fighting/Riots
 - Bullying
 - Hostage/Kidnapping
 - Others.....



School Risk Management Planning – Profile

- The State Emergency Response Application (SERA) is a password protected, web-friendly, spatially-enabled application that displays and provides the following information to first responders, emergency managers, and law enforcement:
 - School Profile (Address, type of school)
 - Directions to the Facility;
 - Population Profile (students, teachers, special needs);
 - Points of Contact (email, phone and text);
 - Displays Building floor plans and Assets (classrooms, cameras, staging areas);
 - Architectural Floor Schematic (pdf);
 - Strategies and Procedures Addressing Hazards and Threats
 - Panic Alarm Information (near-real time location, type of emergency, panic alarm initiator, camera feeds)
- The data and information collected and published in SRMP is seamlessly displayed in SERA.

The screenshot displays the State Emergency Response Application (SERA) interface. At the top, the title "STATE EMERGENCY RESPONSE APPLICATION" is visible, along with a user profile for "Stuart A. Smith" and a "LOGOUT" button. Below the title, there are navigation tabs for "CATEGORY" (Higher Education), "SCHOOL" (Main Campus), "CAMPUS" (Main Campus), "BUILDING" (1), and "FLOOR" (1). The status is "NORMAL".

The main content area is divided into several panels:

- PROFILE:** Displays "WCCC Main Campus John C. Preston Building" and "Get Directions" and "Floor Plans" links.
- OCCUPANCY:** A table showing occupancy counts for different times of day.
- CONTACTS:** A section for "ROOM SCHEDULING", "HEAD OF SECURITY", and "MAINTENANCE" with checkboxes and contact icons.
- RESPONSE / RECOVERY:** A section for "Incident Type" with tabs for "Response" and "Recovery". It lists various incident types and provides detailed procedures for each.

The right side of the interface features a "Map Layers" panel with the following options:

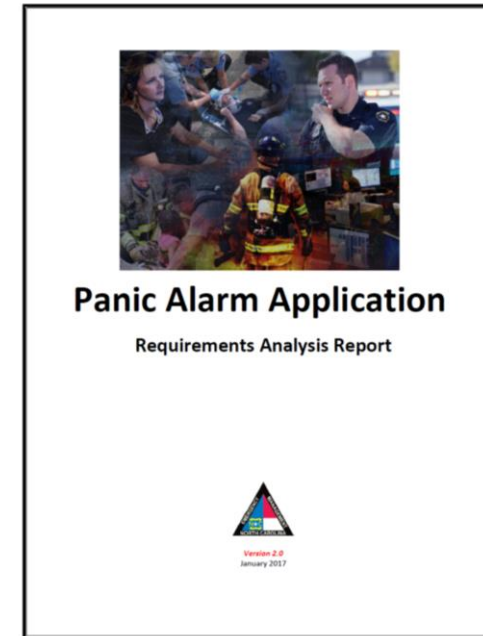
- TURN ALL LAYERS ON/OFF
- Interior Building Features
 - Mechanical Closet
 - Data / Telecommunications
- Building Access
 - M Main Entrance
 - D Exterior Door

The central map shows an aerial view of the building with a blue floor plan overlay. The floor plan is labeled with room numbers (e.g., 100, 101A, 101B, 102, 103, 104, 105, 106, 107, 108, 109, 110, 111, 112, 113, 114, 115, 116, 117, 118, 119, 120, 121, 122, 123, 124, 125, 126, 127, 128, 129, 130, 131, 132, 133, 134, 135, 136, 137, 138, 139, 140, 141, 142, 143, 144, 145, 146, 147, 148, 149, 150, 151, 152, 153, 154, 155, 156, 157, 158, 159, 160, 161, 162, 163, 164, 165, 166, 167, 168, 169, 170, 171, 172, 173, 174, 175, 176, 177, 178, 179, 180, 181, 182, 183, 184, 185, 186, 187, 188, 189, 190, 191, 192, 193, 194, 195, 196, 197, 198, 199, 200) and includes icons for "M" (Main Entrance) and "D" (Exterior Door). A yellow diamond icon is also visible on the map.



Digital Panic Alarm – Status

- NCEM, in coordination with DPI – CSS and the 911 Board, held over 30 functional and technical requirements meetings with:
 - Law Enforcement,
 - First Responders,
 - School Administrators,
 - School Resource Officers,
 - 911 Telecommunicators, and
 - County Emergency Managers.
- Utilizing this information, NCEM is currently:
 - Survey and identify technical solution that most closely meets the defined requirements;
 - Test / Proof of Concept with solution on select number of schools;
 - Assess any physical, electrical and or technical requirements that must be met for solution to work in schools statewide;
 - Calculate / Estimate the cost for initial implementation and annual operations
 - Report due by May 21, 2018.



Training - Critical Incident Response for School Faculty and Staff

Progress To Date:

- Training Video rolled out by the Center for Safer Schools in March 2014 to replace the 1999 version
- Mandated Statewide training. A representative from each of the 115 LEAs attended the regional training.
- A new training was available beginning in 2015 to include charter schools.
- Train-the-Trainer “TTT” format
- The Center for Safer Schools has added the RUN HIDE FLIGHT options to the video

Crisis Kits - Status

- § 115C-105.52. School crisis kits.

The Crisis Kits have evolved into the SRRMS and red bags that each teacher has in their classrooms. They are now classroom based and called Go Kits. They may contain:

- Updated class rosters
- Non-Expiring Diabetic Supplies
- Basic medical supplies



School Risk and Response Management - Progress

Progress to date includes:

- Acquisition of all floor plans for all 2,280 schools – [Completed / In Maintenance](#);
- 12,502 buildings; 14,432 flood plans / 185,500+ assets within school buildings;
- School Risk Management Planning Tool – [In Production](#);
- Schools with Risk Management Plans in SRMP – 1,895 of 2,280;
- State Emergency Response Application – [In Production](#);
- NCID / CJLEADS Administrator Module – [In Production](#);
- Conducted Panic Alarm Requirements Analysis with [30+](#) Stakeholders;
- Digital Panic Alarm Solution – May 21, 2018;
- Conducted Requirements Analysis for Community Colleges and Universities;
- Higher Education Risk Management Tool – Staging (December 2017);
- Coordinating with UNC-GA to seamlessly pull building and class information from DAVE system;
- Receiving digital floor plans from community colleges and state-supported universities.
- Department has initiated integration of Prison Facilities into SERA and Risk Management Planning Tool (55 Prison Facilities in process)



School Risk and Response Management Steps Forward

- Complete NCID / CJLEADS of State Highway Patrol and State Bureau of Investigation into SERA;
- Complete NCID / CJLEADS for all law enforcement and emergency managers into SERA;
- Continue to work with remaining counties / school districts to establish Risk Management Plans into SRMP / SERA;
- Receive and Report to the NCGA on Panic Alarm Solution;
- Collect and/or generate flood plans and assets for Community Colleges and State Supported Universities;
- Roll out Higher Education Risk Management application for Community Colleges and Universities; Generate and incorporate remaining Community Colleges and State Supported Universities .
- Incorporate Prison and Juvenile Detention Facilities into SERA.
- Fund required positions to support operations of applications, data management and planning outreach with planning entities.



Questions?

John.Dorman@ncdps.gov

919-825-2310



NC Center for Safer Schools



TASK FORCE

Greta Metcalf

Meridian Behavioral Health Services
Chief Officer of Community Engagement

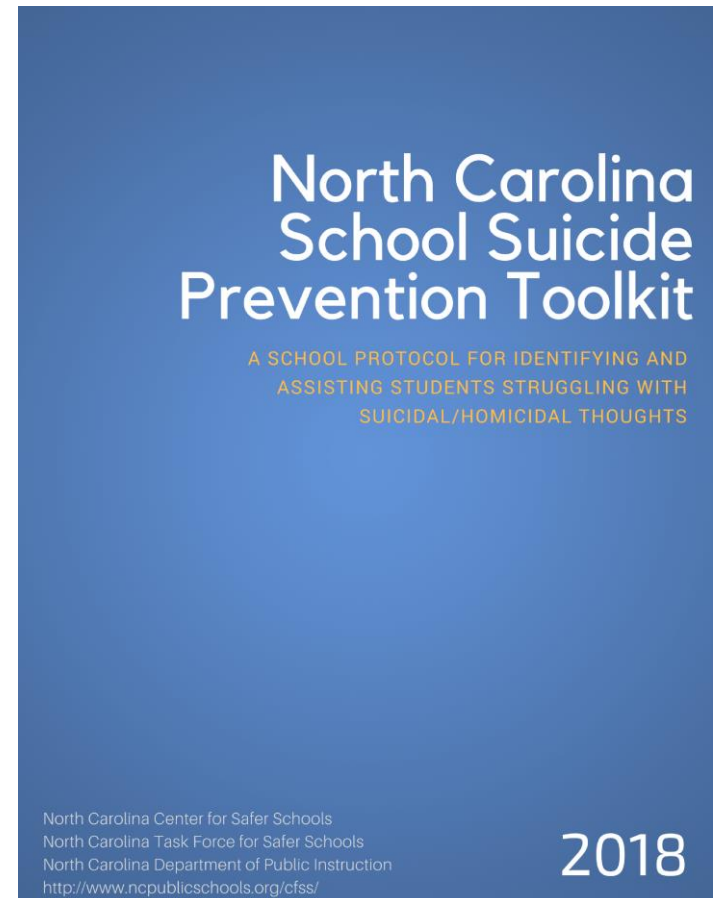
Comprehensive School Based Mental Health Model

- Schools/Mental Health Provider Partnerships
- School mental health programs supported by university training programs
- School-based health clinics with behavioral health component
- School employees provide counseling services and increasing Student Assistant Programs.
- Memorandum of agreements with community mental health providers for mobile crisis services within schools
- Trauma Sensitive and Resiliency Schools



Toolkit Components

- Prevention and Identification
- Screening
- Access to Care Protocol
- Suicide Risk Intervention Documentation
- Action/Monitoring Plan
- Safety Plan
- Resource guides and Crisis Intervention
- Caregiver Tips
- Parent Notification form



Access to Care Protocol

TO MANAGE BEHAVIORAL HEALTH AND SUICIDAL/HOMICIDAL CONCERNS IN SCHOOLS

identify

IDENTIFY MENTAL HEALTH/
SUBSTANCE USE CONCERNS

connect

CONNECT TO POINT PERSON
FOR SCREENING

assess

UTILIZE SCREENING TOOL

connect

LINK TO APPROPRIATE CARE

follow up

ENSURE LINKAGE TO CARE AND
WRAP AROUND CARE MODEL

- 1. Identify:** All school faculty members and staff need to be equipped to identify warning signs of at-risk behaviors
- 2. Connect:** Schools should have one or two point persons at each school to receive referrals of identified students presenting warnings signs
- 3. Assess:** An evidence-based, cost-effective, user-friendly screener is essential
- 4. Connect:** Linkage to care is essential when students present urgent/emergent, while preventative/routine care is equally important for those who do not present as urgent/emergent
- 5. Follow-up:** Ensuring linkage to care occurs and there is a wrap-around-care model in place

Threat and Risk Assessments

Violence Risk Assessment

- Behavior Assessment Systems for Children
- Rapid Assessment for Adolescent Prevention Services

Threat Assessment Tools

- Seattle Youth Violence Prevention Initiative Risk Assessment Tool & Youth Check-In

Youth Mental Health First Aid

- 1 in 5 children live with a mental health condition, many of which go undiagnosed
- YMHFA is a public education program introducing participants to risk factors and warning signs of mental illnesses and substance use.
- As of November 2017, North Carolina has:
 - 588 certified instructors (432 MHFA, 310 YMHFA)
 - 46,316 Mental Health First Aiders



NC Center for Safer Schools

Task Force

Caroline Daily – Vice Chair

8th Grade English Teacher – Riverwood Middle School (Johnston
County Public Schools)





Speak Up NC

GS § 115C-105.51.- Anonymous Tip Line Reporting- Each local school administrative unit is encouraged to develop and operate an anonymous tip line.

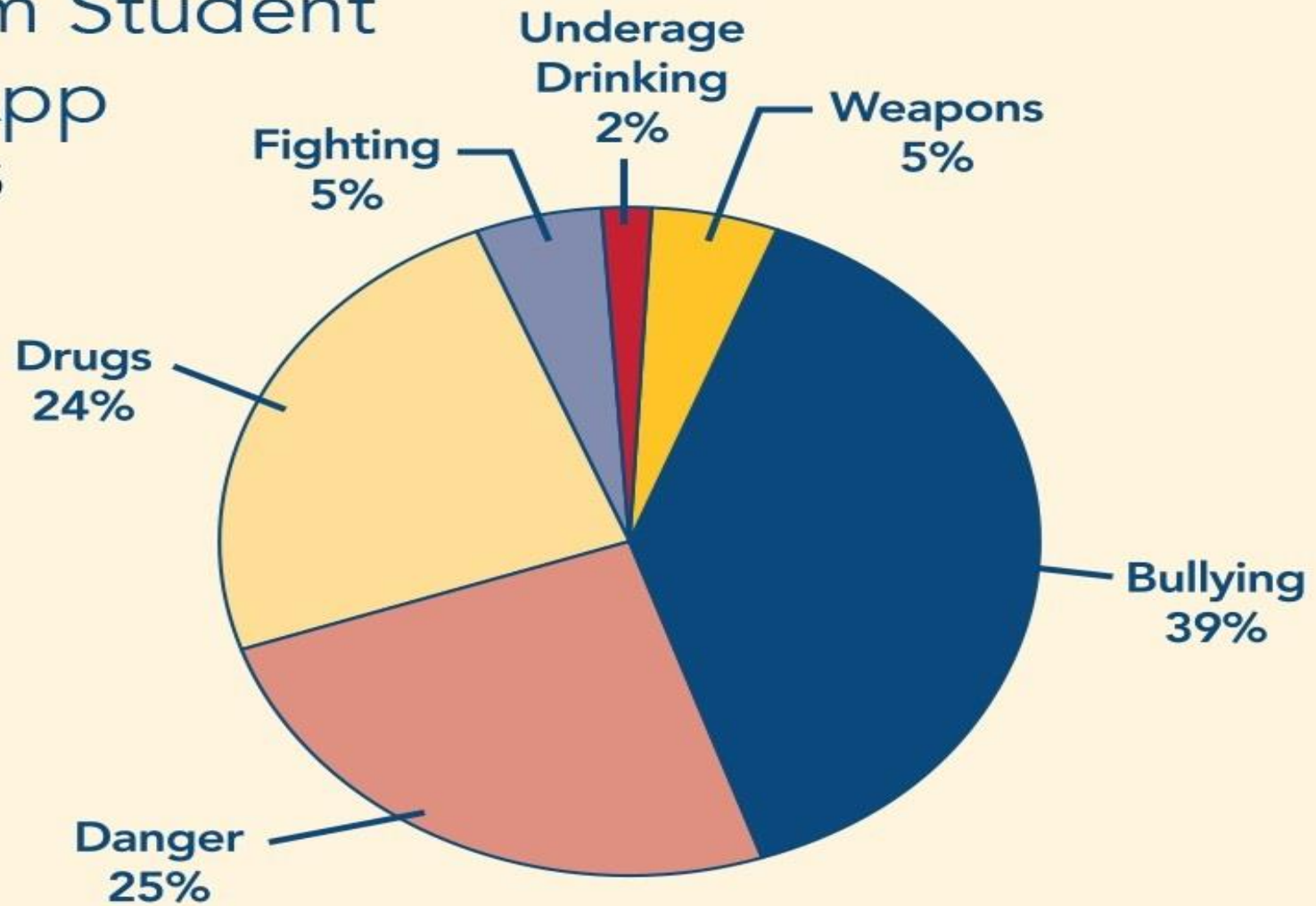
Center for Safer Schools developed and piloted SPKUPNC. Piloted in five counties across NC.

To date there have been 2,991 downloads of the app.

Many students have friends in other schools. When LEAs utilize the same reporting system, information can be shared statewide and students can send tips to neighboring schools making the reporting system more effective.

SPKUP NC VERIFIED INCIDENT TYPES

Data from Student
Tipline App
2015-2016



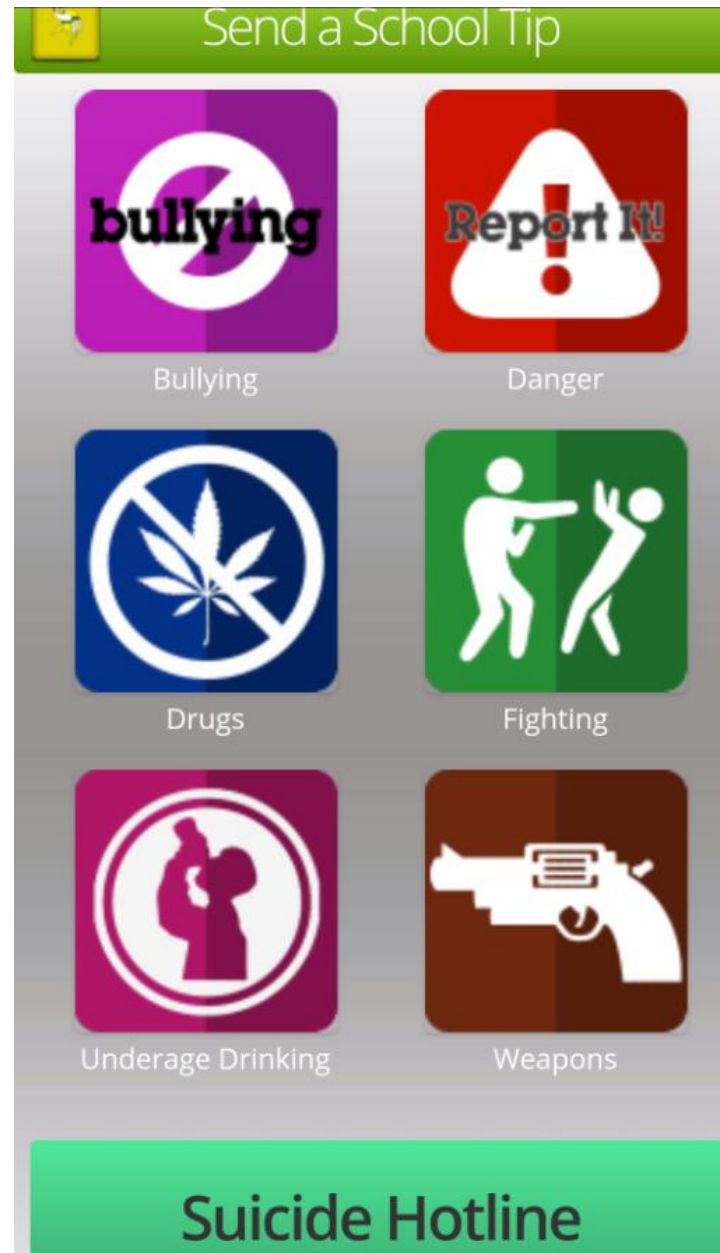


Speak Up NC

Needs as a result of the pilot:

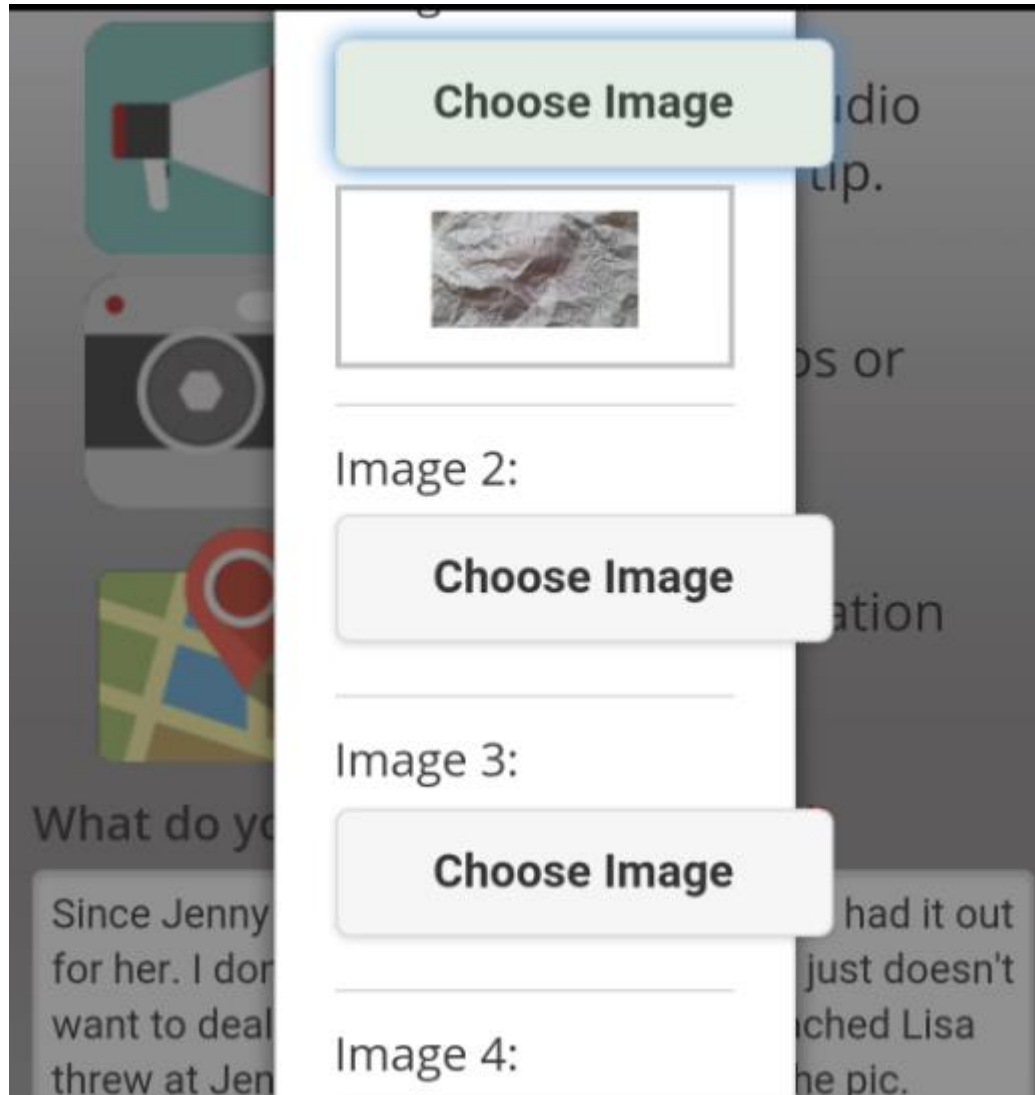
- 24/7 manned call center
- Ongoing marketing and education for students
- Additional personnel to assist schools with implementation
- Training built into project

<https://speakupapp.tips>





- ▶ Image
- ▶ Video
- ▶ Voice
- ▶ Location optional



Bullying Legislation

GS § 115C-407.15-18

Declares that each local school administrative unit shall adopt a policy prohibiting bullying or harassing behavior before December 31, 2009.

GS § 115C-407.16. (d)

At the beginning of each school year, the principal shall provide the local school administrative unit's policy prohibiting bullying and harassing behavior, including cyber-bullying, to staff, students, and parents as defined in G.S. 115C-390.1(b)(8). Notice of the local policy shall appear in any school unit publication that sets forth the comprehensive rules, procedures, and standards of conduct for schools within the school unit and in any student and school employee handbook.

Bullying Reporting Protocol

We provide parents concerned about a bullying situation with guidance regarding whom to contact.

- Teachers
- Principal, Counselor, School Resource Officer (if needed)
- Local Superintendent
- Local Board of Education
- NC Center for Safer Schools

S.T.A.M.P.

Student Tutoring And Mentoring Program

Designed to meet the whole-child needs of our students

Why S.T.A.M.P.?

It gives the student:

- The ability to discuss emotional needs
- At least one close mentor within the school setting

S.T.A.M.P. Focus Areas

Topics taught include

- Responsibility
- Integrity
- Cyber Safety
- Being a Good Citizen
- Trustworthiness
- Perseverance
- Positive Attitude

Implementation

- S.T.A.M.P. moves together through the school years
- A teacher's S.T.A.M.P. "family" becomes a community of students working together

S.T.A.M.P Results

The first year of S.T.A.M.P. (2016-2017) proved very successful.

- Discipline referrals were down 69%
- Absences were down 11%



NC Center for Safer Schools

TASK FORCE / Student Engagement Committee Co-Chairs

Student Perspective



1. What do you think will make your school safer?
2. What needs to be done to improve school safety?

One of the biggest issues in schools at this time is the positive environment, or lack of. I think finding ways to better connect peers with one another and with support staff will help to make schools safer. Recently, a movement has been created named "Walk Up Not Out" to encourage creating a more positive environment through engaging with one another. I will be speaking with my Principal about this movement and looking to turn it into a club that will start in the Fall of 2018. This is where I think the Student Engagement Advisory Group is so important; it allows schools from across North Carolina to connect and look to solve problems like this. It is important to focus on the different needs of each school and their students and the SEAG allows for their voices to be heard.

Sarah Wallace Strickland

Student Perspective



I personally feel that if we had more SRO officers our school building would be safer and more secure. If we had officers near all the exits/entrances to the school, monitoring who comes in and out, that should prevent most traumatic events from happening.

Kiara Thaxton

Student Perspective



Clayton High School
Round Table Discussion regarding School Safety

Findings and Recommendations

Riley Barnes