

COVID-19 (CORONAVIRUS)

NC INFORMATION

@NCDHHS

www.ncdhhs.gov/coronavirus

Thursday, May 14, 2020



NC DEPARTMENT OF
HEALTH AND
HUMAN SERVICES

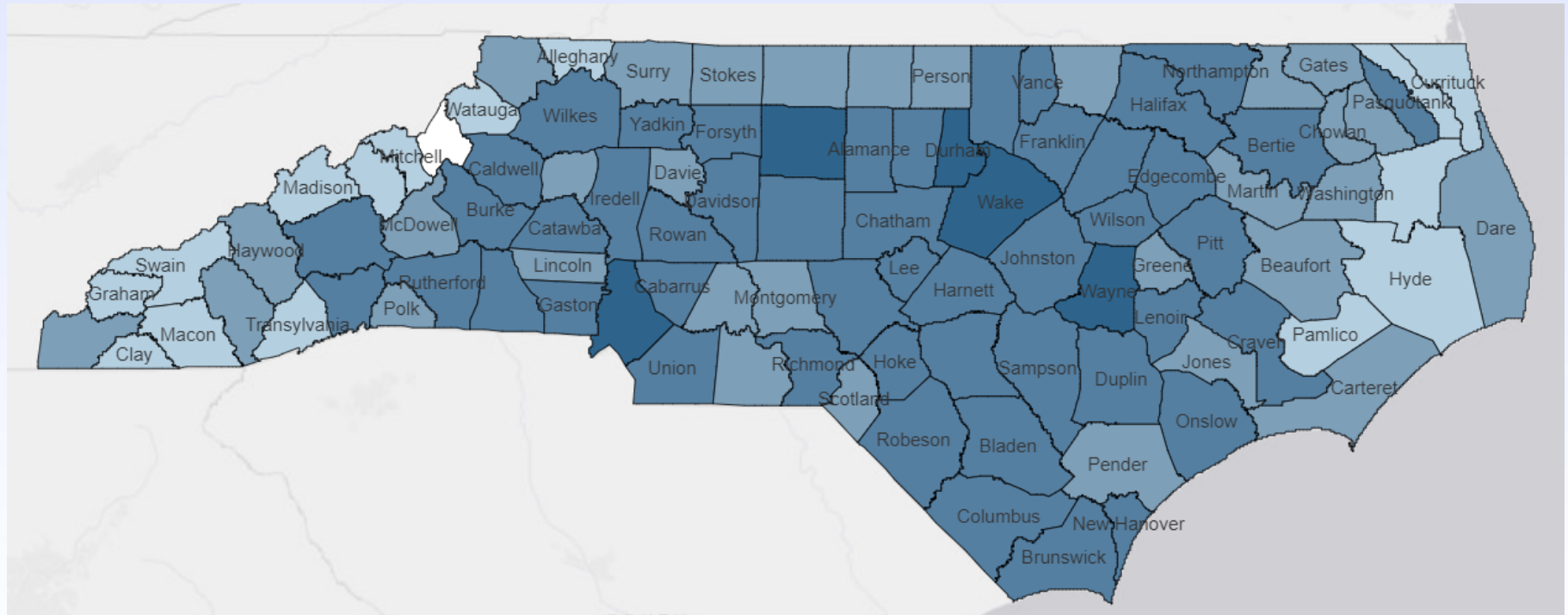


North Carolina Emergency Management



NC Cases	Hospitalized	Completed tests	NC Deaths	Counties with Cases
5,859	521	210,457	597	99

Data as of May 13, 2020 – 11:00am

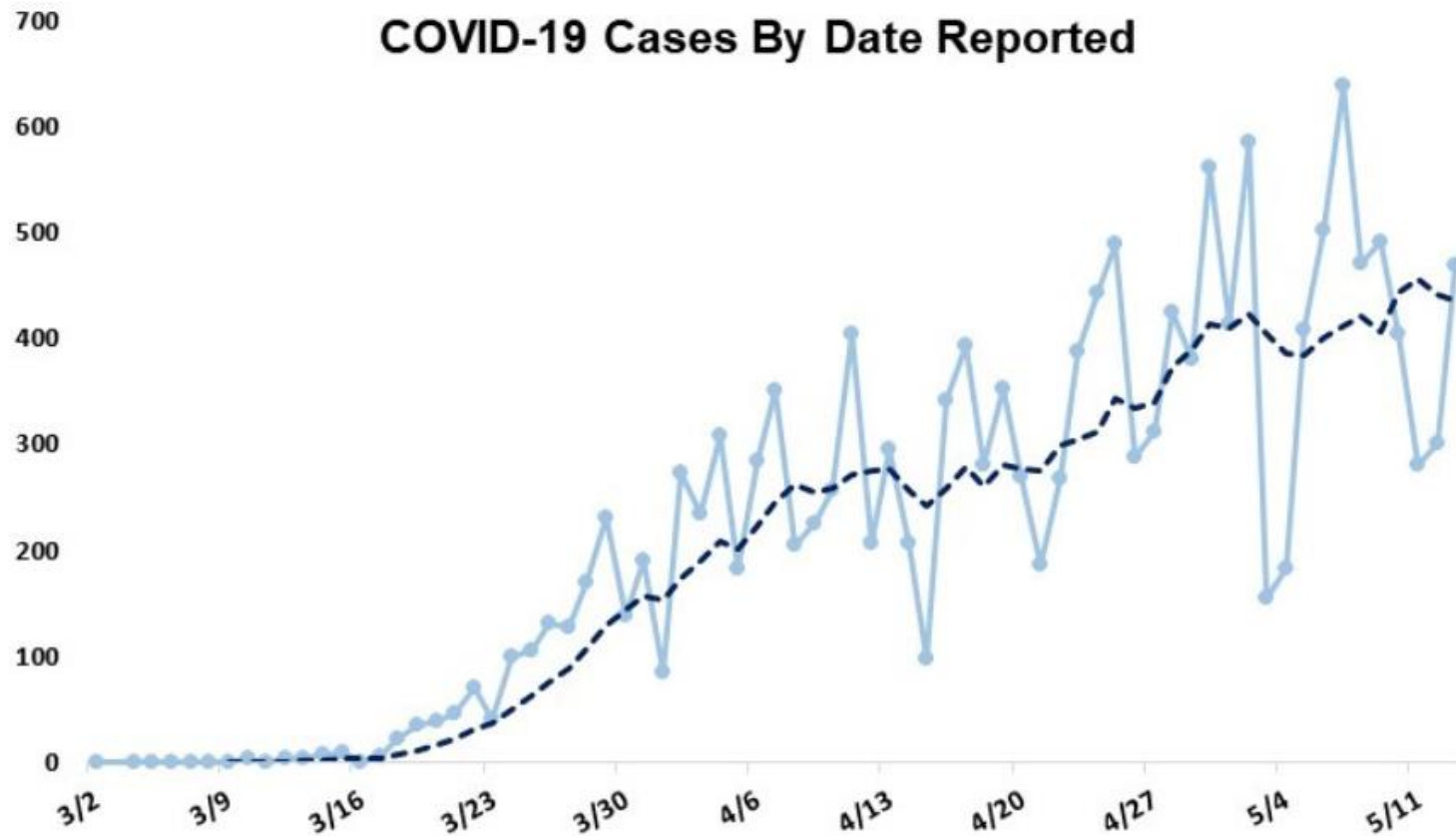


<https://www.ncdhhs.gov/covid-19-case-count-nc>

Data Available at covid19ncdhhs.gov

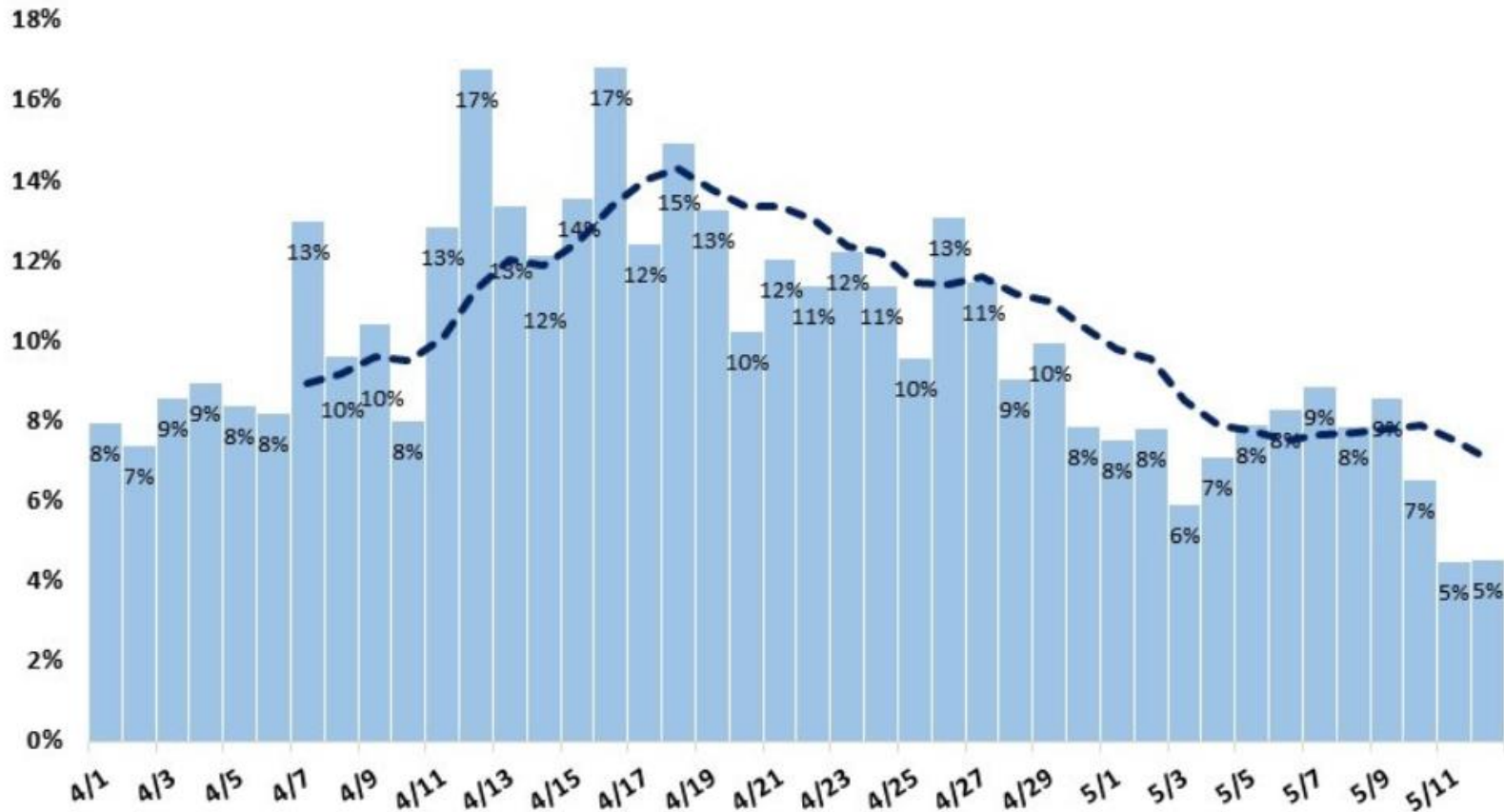
Key Metrics	Cases	Hospital Capacity & PPE	Congregate Activity
New cases over time	By county & ZIP code	PPE from SNS	Facility type with cases and deaths
CLI/surveillance	By Age, Race/Ethnicity, Gender	PPE from private: total ordered and received	Facility type with outbreaks
Hospitalizations over time	Over time by report date	PPE requests and days of burn	Counties with outbreaks
New total tests over time	Over time by specimen collection	Total hospitalized	Facility names
Percent positive over time	Over time cumulative	Inpatient and ICU beds: empty and total	
Tracing update	Number of recovered	Ventilators	

Trends: Laboratory-Confirmed Cases

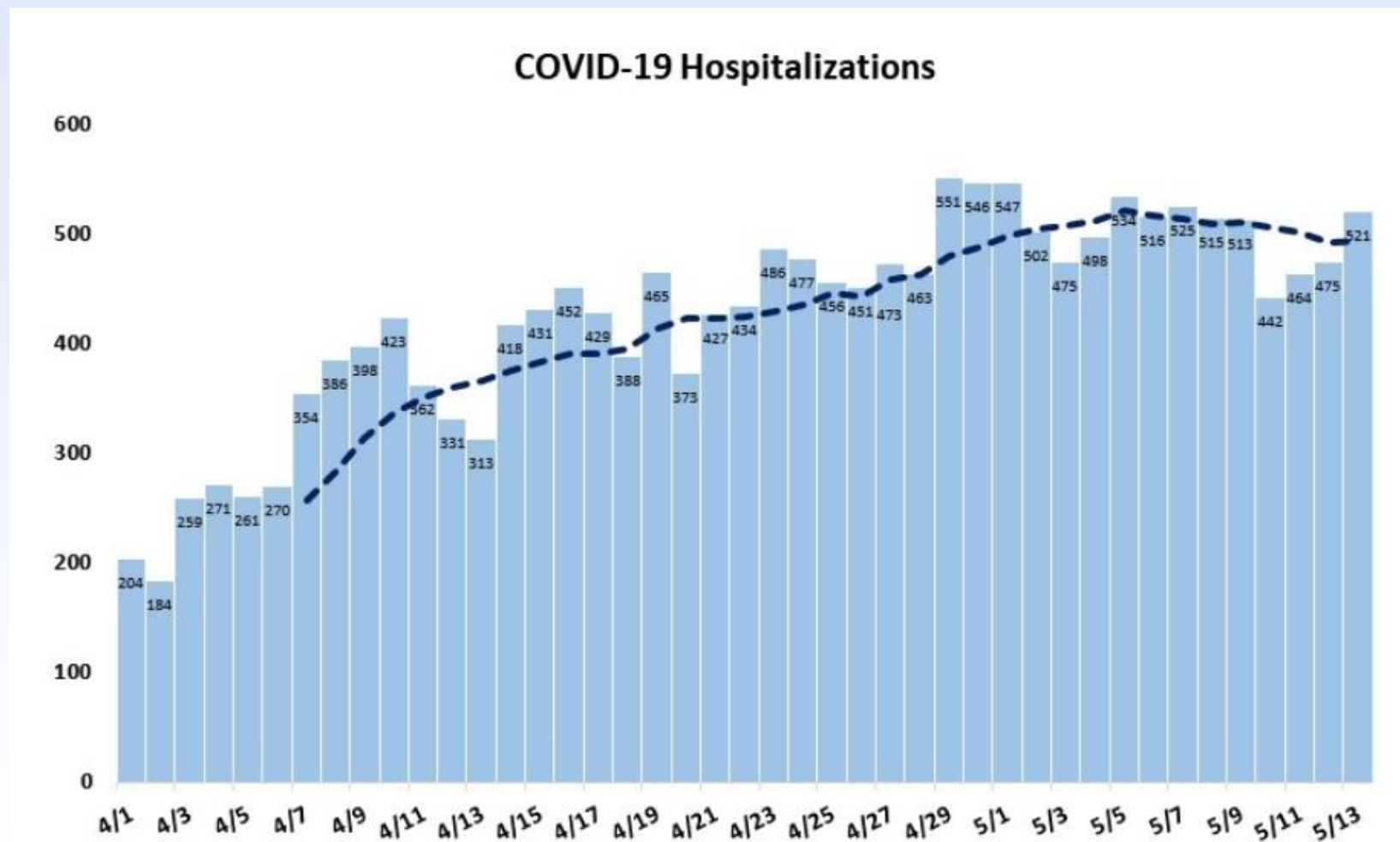


Trends: Positive Tests

Positive Tests as a Percent of Total Tests

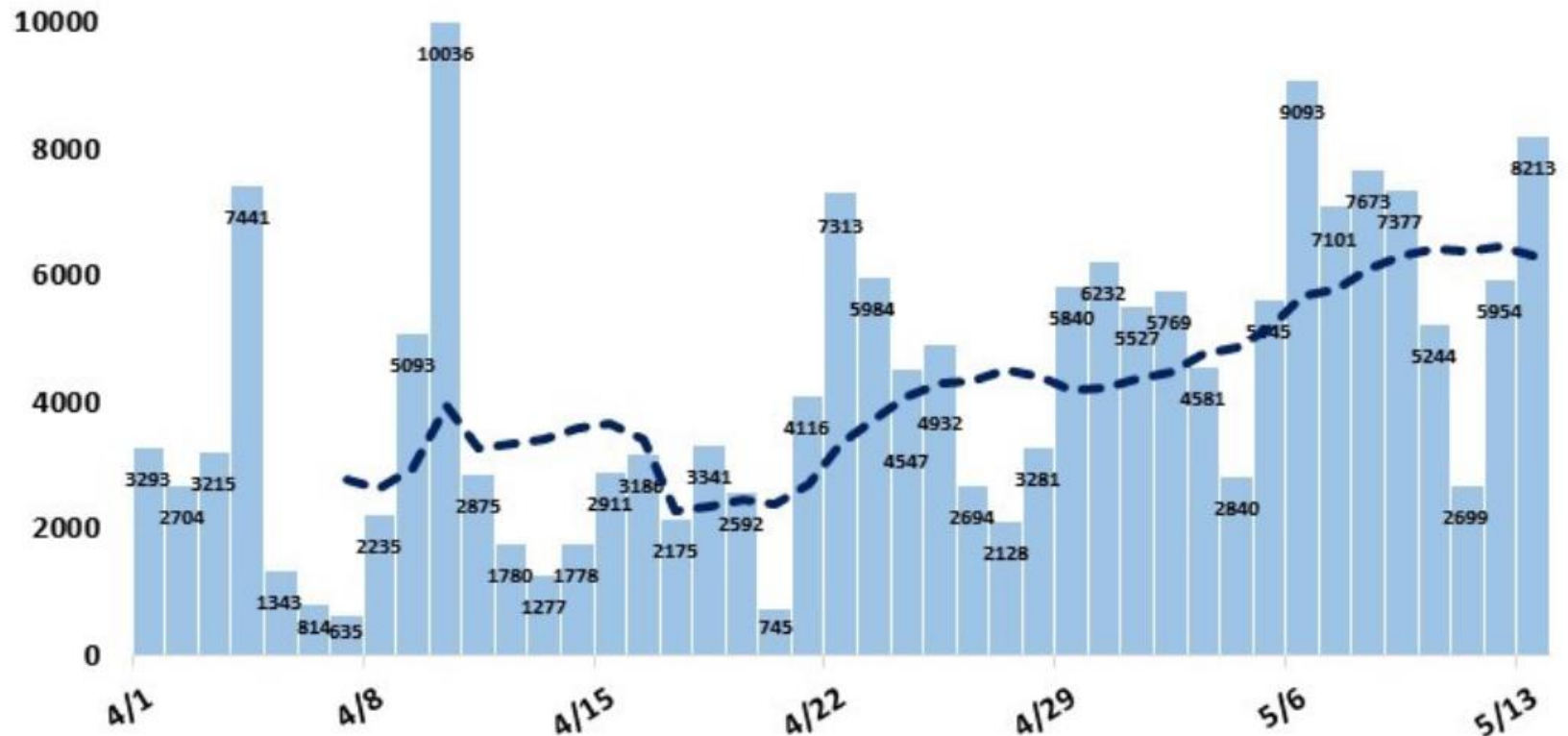


Trends: Hospitalizations



Trends: Testing

Total Tests Reported



Testing and Tracing: Guiding Principles

**Focus on equity and
access to testing in
vulnerable populations**

**Agility to respond to
emerging crises**

**Build infrastructure
throughout NC for testing**

**Be data-driven on how to
deploy testing resources**

NC Coordinated Testing Action Plan

- Goal is to increase the number of collection sites and expand access to testing in local communities.
- Testing sites will vary based on the characteristics of each county – we are working with several private sector partners to bring large testing sites to NC communities.
- Work closely with Local Health Departments and leverage their expertise to determine testing and tracing goals that meet the needs of each county.

Long-Term Care Focus

Prevent

Prevent the introduction of COVID-19 into the facility

Identify

Identify residents or staff with COVID-19 early and respond to contain further spread

Support

Provide resources and tools to support staffing, PPE, and funding

Support for Nursing Homes

- NCDHHS online toolkit & trainings for long-term care facility staff
- Medicaid Changes:
 - Financial support to specified LTC providers to strengthen infection prevention activities.
 - Targeted assistance to impacted nursing facilities & adult care homes to address increased cost of heightened health & safety practices related to COVID-19 outbreaks.

PPE for Long-Term Care

- State will be distributing 1 million sets of PPE to over 3,000 facilities across NC including skilled-nursing facilities, adult care homes, and group homes.
- PPE pack will include approximately 10-14 day supply of procedure masks, face shields, gloves, and shoe covers
- Ongoing request process for facilities needing additional PPE
- Guidance on PPE conservation and use on DHHS website

Testing in Nursing Homes

- CDC/DHHS guidance recommends testing:
 - Anyone with signs or symptoms of COVID-19
 - All residents and staff once one case is identified
- DHHS is creating guidance on testing of all staff and residents periodically

If you leave home, know your Ws!



WEAR

a cloth face
covering.



WAIT

6 feet apart. Avoid
close contact.



WASH

your hands often or
use hand sanitizer.

@NCDHHS

#StayStrongNC