

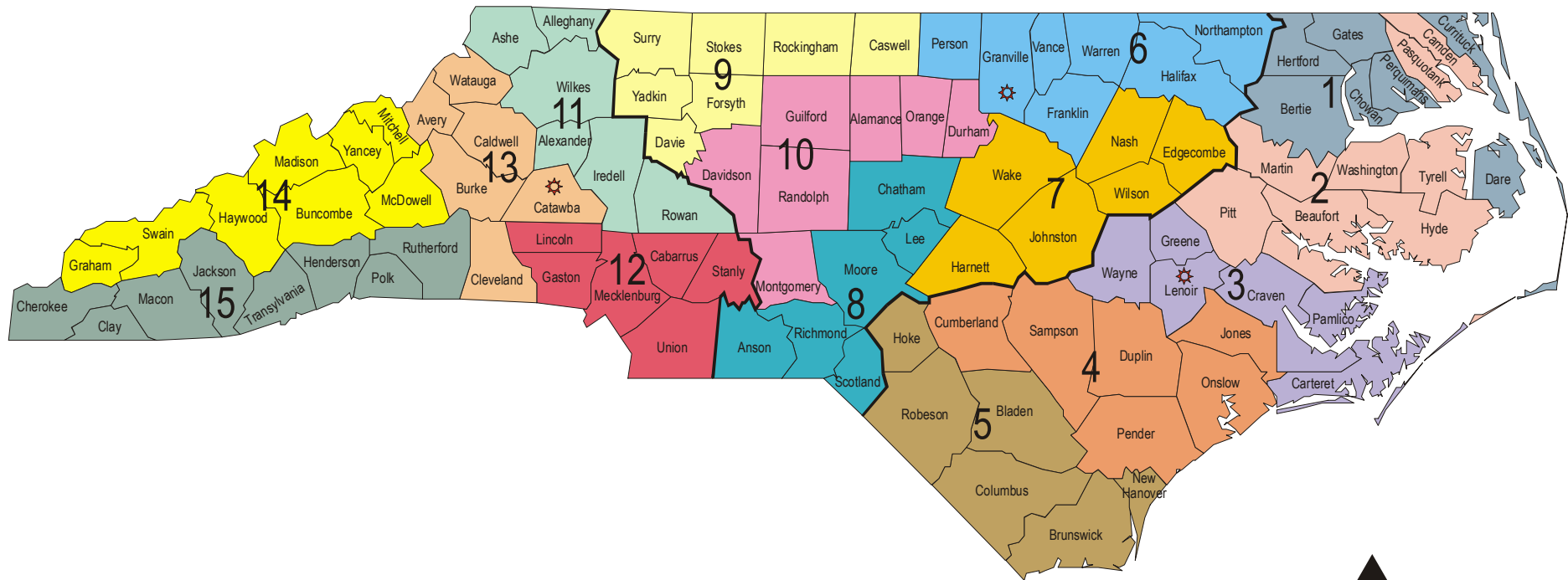


COMPONENT PARTS OF SERT's ORGANIZATION

- Regional Coordination Centers (3 Branch Offices)
- The State EOC - SERT Leadership
 - Communications
 - Emergency Services
 - Human Services
 - Infrastructure
 - Logistics (Warehouse)

State of North Carolina

Division of Emergency Management



Eastern Branch
 Tom Collins, Manager
 3802 Highway 58 North
 Suite B
 Kinston, NC 28502
 252-520-4923

Area	Coordinator
1	David Humphrey
2	Mark Brown
3	
4	Doug Haas
5	Paula Brown

Central Branch
 Elaine Wathen, Manager
 401 Central Ave.
 Butner, NC 27509
 919-575-4122

Area	Coordinator
6	Paul Denison
7	Alan Byrd
8	Woody Mashburn
9	Joe Wright
10	Ricky Tuttle

Western Branch
 Tim Miller, Manager
 3305-15 16th Avenue SE
 Conover, NC 28613
 828-466-5555

Area	Coordinator
11	Greg Atchley
12	Mike Cook
13	Jeff Cardwell
14	Jimmy Ramsey
15	Danny Gee



TYPICAL MISSION REQUESTS

- Auxiliary power support.
- Public shelter support.
- Special medical needs shelter support.
- Food, water, and ice.
- Security and traffic control support.
- Search and rescue support.
- Debris clearance assistance.
- EMS and fire fighting assistance.

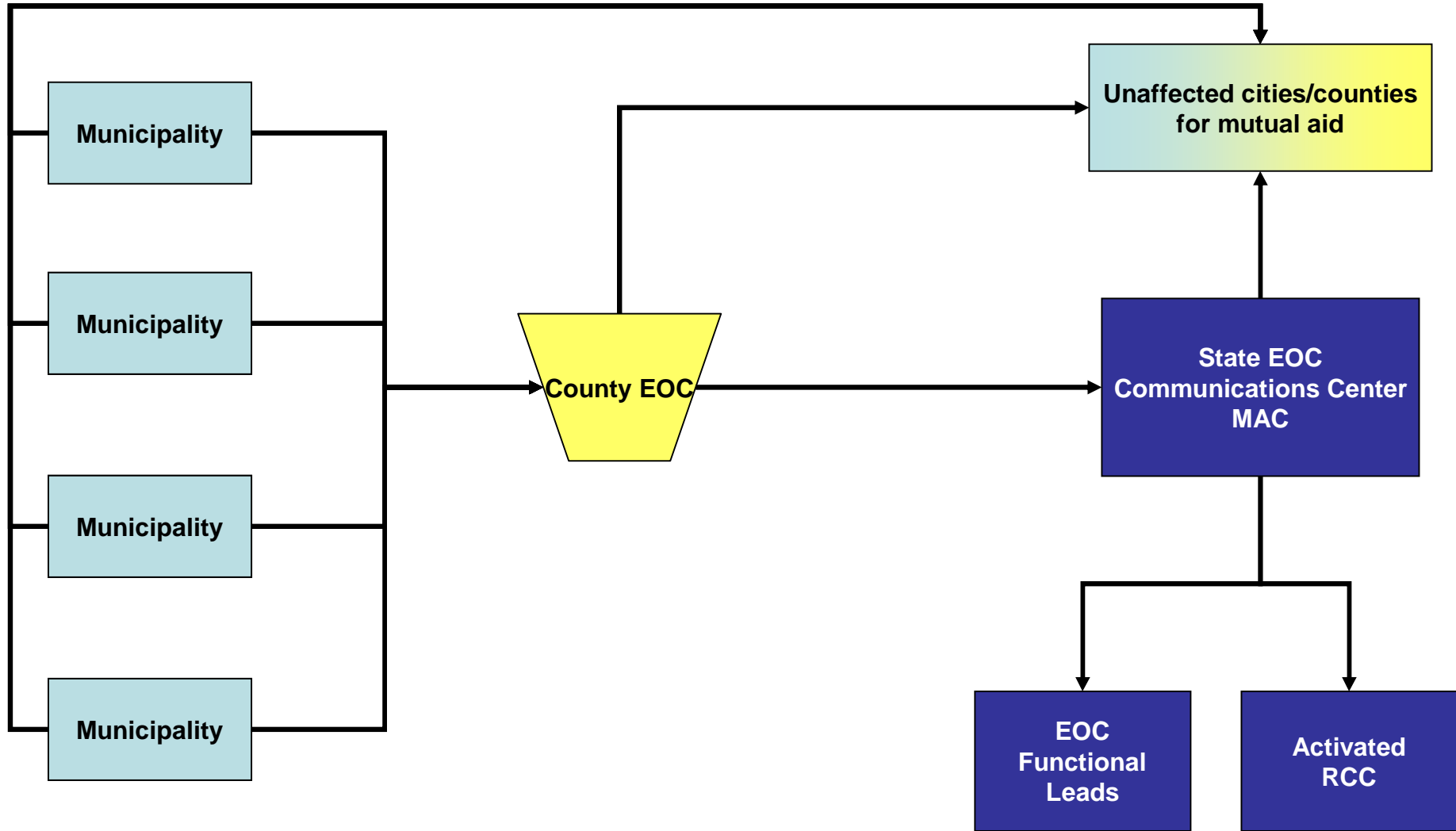
How Counties Prepare for Disaster?

- Pre-Wired Facilities for Auxiliary Power
- Established a Reliable Shelter Program
- Developed Working Relationships with Volunteer Organizations – Mass Care
- Contracts for Necessary Resources
- Public Education – Family Preparedness
- County Receiving and Distribution Point
- A Media Spokesperson
- County Animal Response Team
- Debris Removal Contracts

How NCEM Prepares for a Disaster

- Activate the State EOC
- Evaluation of the Required Resources
- Full Activation of SERT and All of It's Components
- Dispatch of Requested State Response Resources
- Coordination and Management of Response Resources
- Declaration of a State of Emergency
- Notification to FEMA ref. EOC activities/level
- Ensure the Establishment of County Receiving and Distribution Points (Manpower)
- Identification of Necessary Additional Resources
- Utilize SPARTA (State Preparedness and Resource Tracking Application) WEB EOC
- Coordination with Resources & Officials Beyond the State Line
- Demobilization of Response & Transition to Recovery

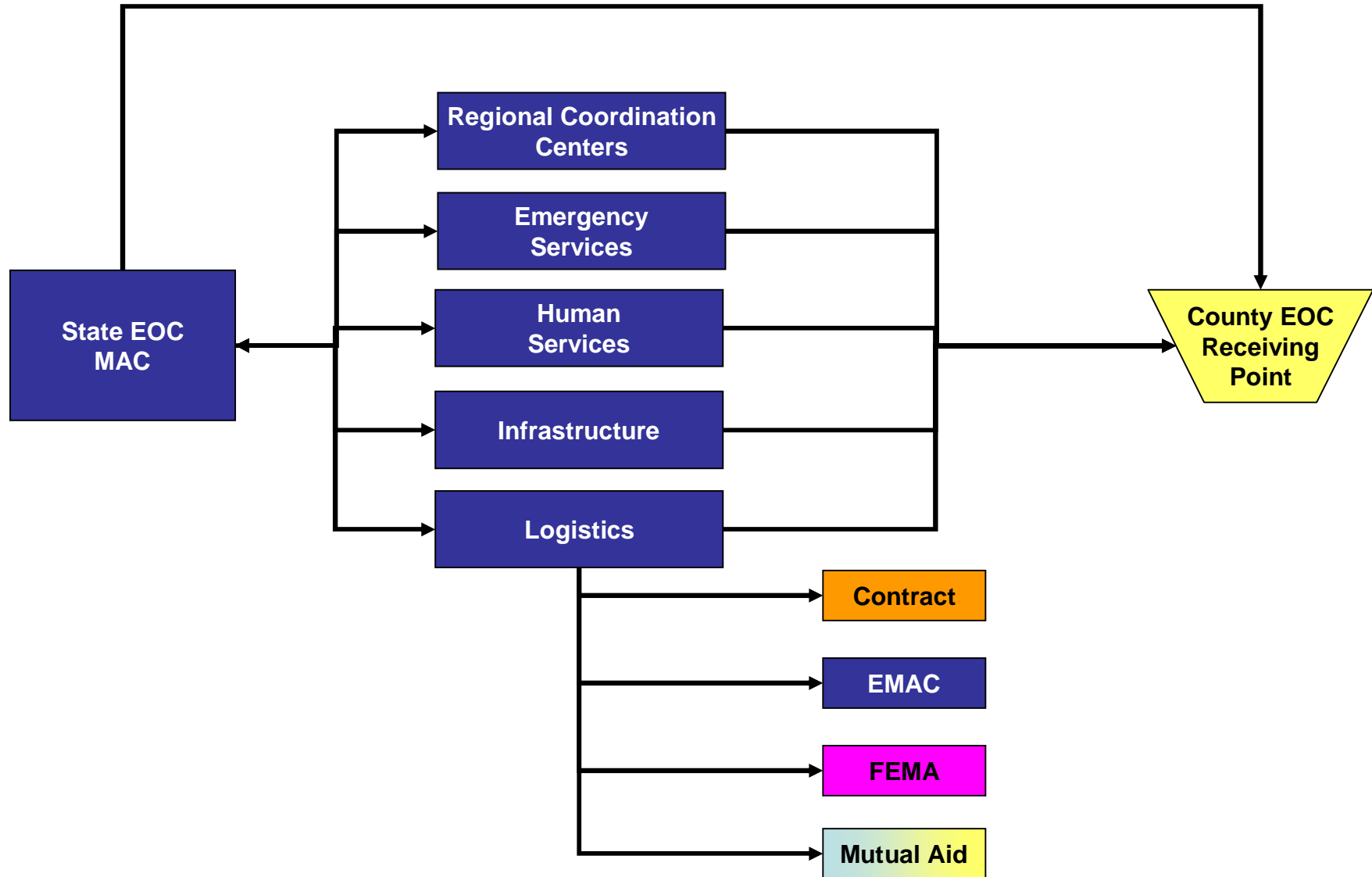
MISSION REQUEST FLOW CHART



*RCC - Regional Coordination Center

MISSION REQUEST FLOW CHART

Inside the State System



Most Used State Resources

- National Guard
- Highway Patrol
- NCDOT
- Forestry
- Corrections
- Civil Air Patrol
- Public Health
- OEMS
- OSFM

- Social Services
- Mental Health
- Corrections
- Agriculture
- VIPER
Communications
- Volunteer
Organizations
- Mutual aid –cities and
counties



RESOURCE TYPING

- ◆ Regional Response Teams
- ◆ Public Health Regional Surveillance Teams
- ◆ State Medical Assistance Teams
- ◆ Urban Search and Rescue Teams
- ◆ Swiftwater Rescue Teams

The NC Regional Response Hazardous Materials Teams



Helping Us Help You



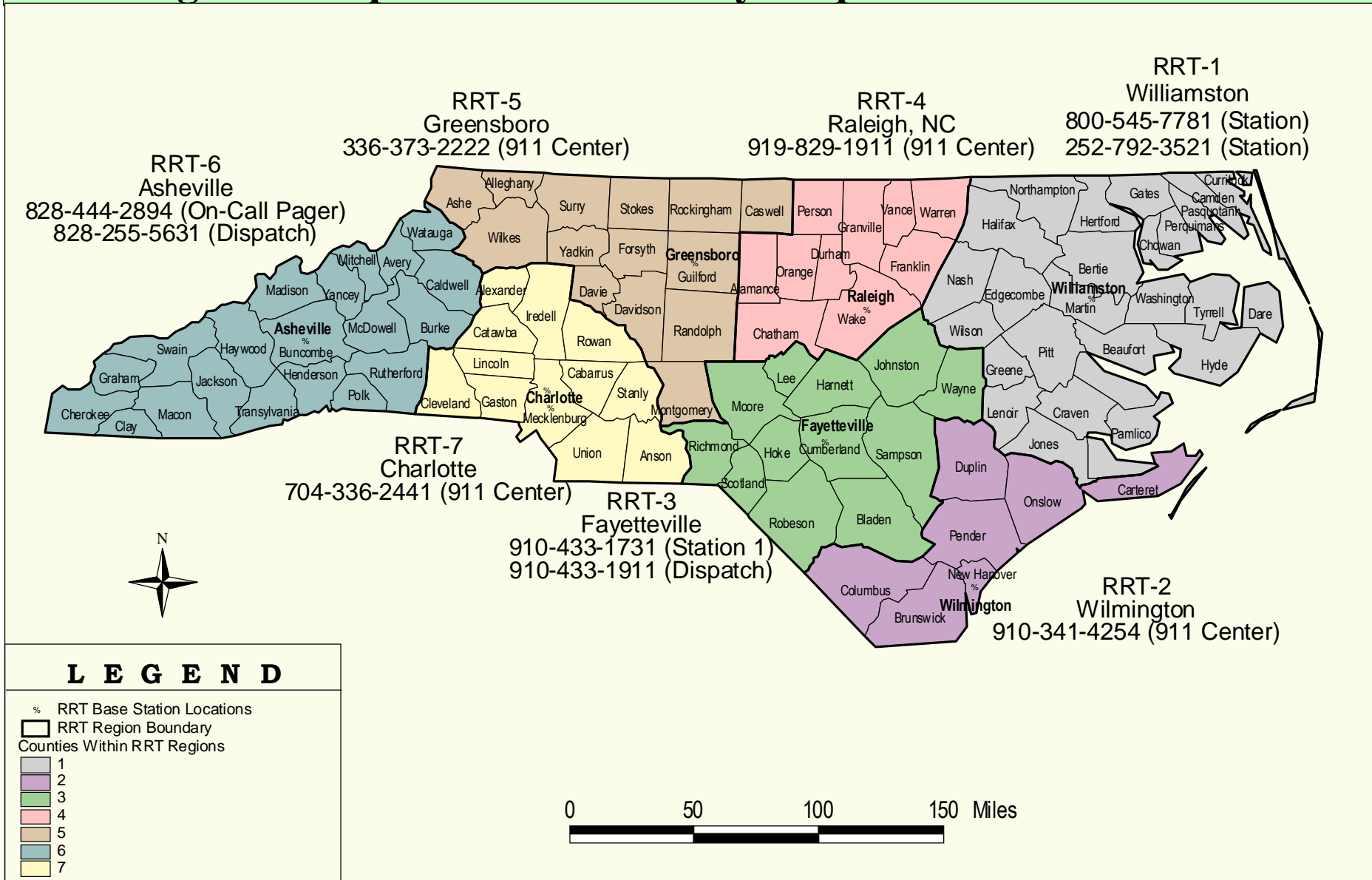
7 Regional Response Teams

Designed To Provide Regional Response To Hazardous Materials Incidents

Available To Areas That Lack Hazardous Materials Response Capabilities And As An Additional Resource To Areas That Do

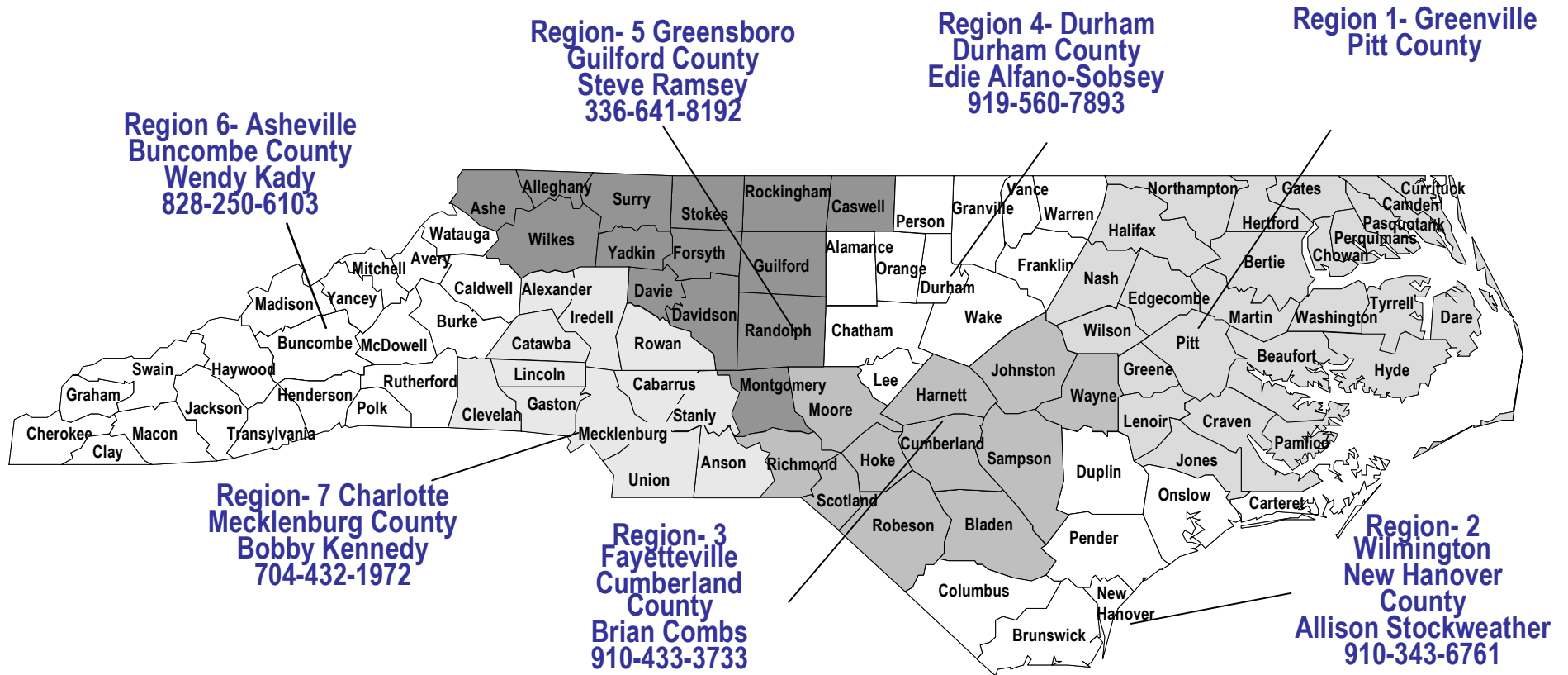
Full Response -12 Hazardous Materials Technicians (including chemists, industrial hygienists, safety professionals)

North Carolina Hazardous Materials Regional Response Team Primary Response Area Boundaries



NC Department of Health and Human Services • Division of Public Health • Office of Public Health Preparedness and Response

**Public Health Regional Surveillance Teams
Industrial Hygiene Consultants**





Public Health Regional Surveillance Teams

Co-located in 7 host counties with the 7 regional Haz-Mat Teams (RRT's)

Physician/Epidemiologist, Disease Investigator/Epidemiologist, Industrial Hygiene Consultant, Administrative Assistant
County Employees funded through State aid to counties

Serving 6 to 26 county regions





Roles of Regional PHRST Teams

- ◆ Environmental decontamination
- ◆ Environmental and exposure assessment
- ◆ Outbreak investigation
- ◆ Risk communication
- ◆ Training





STATE MEDICAL ASSISTANCE TEAMS

Type I – One Team in NC – SORT/DMAT

Type II's – Regional Hospital Teams (8)

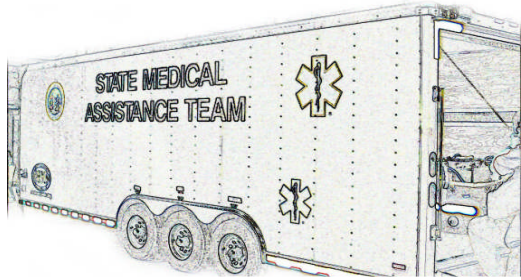
Type III's – County Teams (27)

Mission – Respond in State within 8 hours of an event for Type II teams and 30 minutes for Type III teams to sustain NC until Federal Assistance arrived.

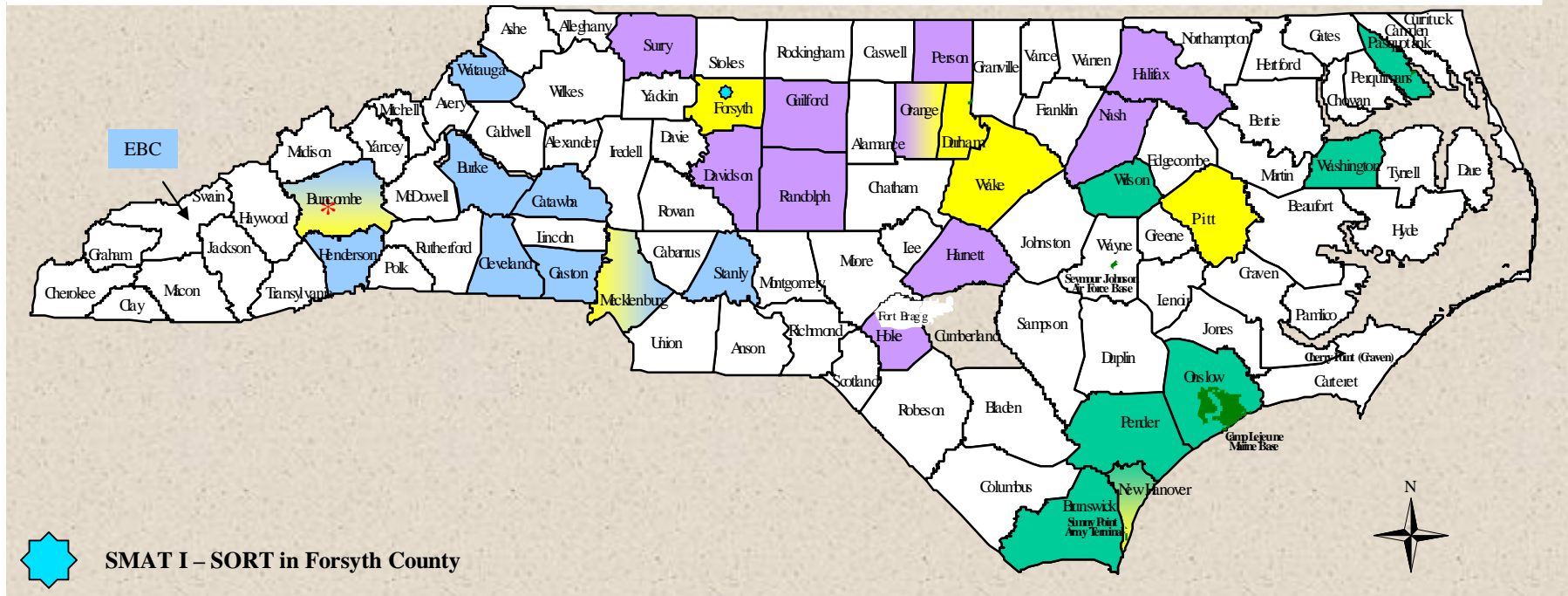


State Medical Assistance Team Type II





State Medical Assistance Teams Type II & III Recipients



 SMAT I – SORT in Forsyth County

SMAT II Recipients	WBO - SMAT III Recipients	CBO -SMAT III Recipients	EBO - SMAT III Recipients
<ul style="list-style-type: none"> Carolinas Medical Center Duke University Medical Center Mission St Joseph's New Hanover Regional Medical Center Pitt County Memorial Hospital The North Carolina Baptist Hospital University of North Carolina Hospitals 	<ul style="list-style-type: none"> Buncombe Burke Catawba Cleveland Eastern Band Cherokee Tribe Gaston Henderson Mecklenburg Stanly Watauga 	<ul style="list-style-type: none"> Davidson Guilford Halifax Harnett Hoke Nash Orange Person Randolph Surry 	<ul style="list-style-type: none"> Brunswick Wilson New Hanover Onslow Pender Pasquotank Washington

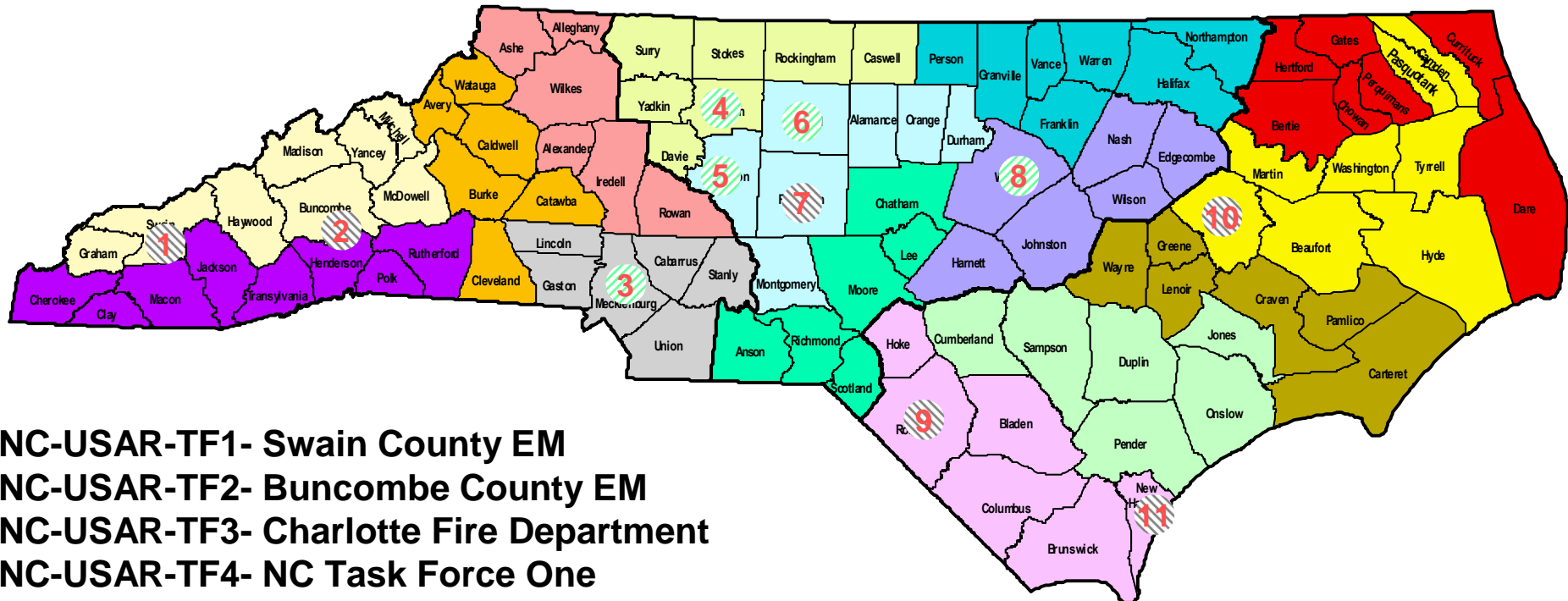


North Carolina Emergency Management Emergency Services

Urban Search and Rescue Capabilities

- **Urban Search and Rescue**
 - Search Impacted/Hazardous areas
 - Stabilize damaged infrastructure
 - Access and stabilize, and initiate care for entrapped persons
- **Damage Assessment (Engineers)**
- **Hazardous Materials Mitigation**
- **‘Swiftwater Rescue’**

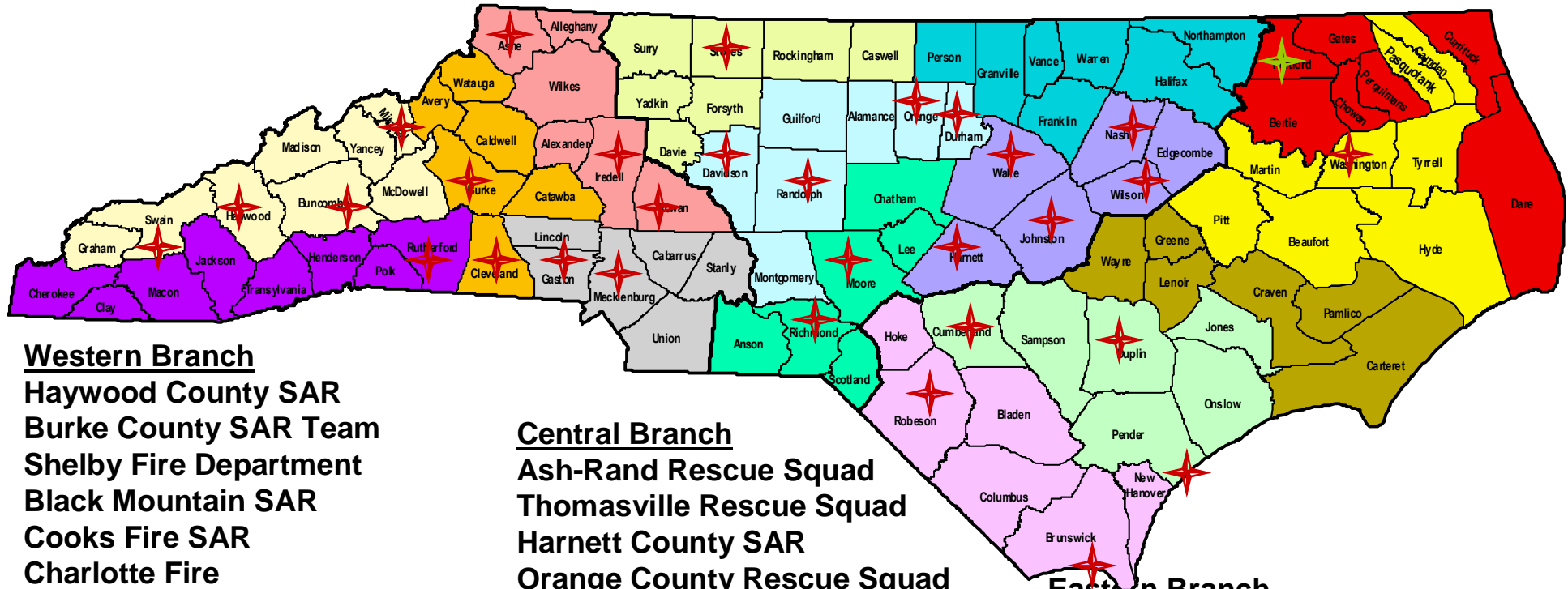
North Carolina Division of Emergency Management Urban Search and Rescue Task Force Locations



- NC-USAR-TF1- Swain County EM
- NC-USAR-TF2- Buncombe County EM
- NC-USAR-TF3- Charlotte Fire Department
- NC-USAR-TF4- NC Task Force One
- NC-USAR-TF5- Thomasville Rescue Squad
- NC-USAR-TF6- Greensboro Fire Department
- NC-USAR-TF7- Ash-Rand Rescue
- NC-USAR-TF8- Raleigh Fire Department
- NC-USAR-TF9- Lumberton Emergency Rescue Unit
- NC-USAR-TF10- Greenville Fire Rescue Department
- NC-USAR-TF11- New Hanover EM

**TYPE II Structural
Collapse Teams**

North Carolina Division of Emergency Management Wilderness Search and Rescue Team Locations



Western Branch

Haywood County SAR
 Burke County SAR Team
 Shelby Fire Department
 Black Mountain SAR
 Cooks Fire SAR
 Charlotte Fire
 Gamewell Fire SAR
 Gaston USAR Team
 Rowan Rescue Squad
 Ashe County SAR Team
 Linville Central Rescue
 Rutherford County SAR*
 Southern Pride SAR Dogs*
 NCSARDA-Western Unit*
 Mitchell County K9*

Central Branch

Ash-Rand Rescue Squad
 Thomasville Rescue Squad
 Harnett County SAR
 Orange County Rescue Squad
 Pineland Resources
 Stokes County Mountain Rescue
 Snow Camp Fire/Rescue SAR
 Sandhills Overland SAR
 Wake Canine SAR*
 NCSARDA-Central Unit*
 REDS Team (Wake Co.)*
 Johnston County Sheriff's Team*
 Wilson Emergency Management*

Eastern Branch

Robeson County SAR
 Hope Mills Fire Department
 Cumberland County Sheriff's SAR*
 Pender SAR
 Down East SAR
 Brunswick SAR
 Albermarle SAR
 Bertie County SAR

Canine Capabilities*

What are your questions?

