



SAS® CHILD WELFARE FRAMEWORK

PROVIDING DATA-DRIVEN INSIGHT TO HELP THE NATION'S MOST VULNERABLE



AN EPIDEMIC CHILD WELFARE IN THE US

- Nearly three-quarters (70.3%) of all child fatalities were younger than 3 years old.
- Nearly 90 percent (85.5%) of child fatalities were comprised of White (38.3%), African-American (31.9%), and Hispanic (15.3%) victims.
- Four-fifths (80.0%) of child fatalities were caused by one or both parents.



Source: 2012 US DHHS Child Maltreatment Report

Social Network Analysis

Risk Factors in
Child Tragedies

Forecasting
Case Load

Analytics
around
Programming
and Placement

Risk-Adjusted
Dollars to
Providers

Risk-Screening of Current
Children in Agency Care

Prioritize Case Load for
CPI

Case Management

Reducing and eliminating risks that children face..

...while understanding the programming that makes
them successful.

2 Primary Data Sources Utilized

- FSFN (Florida Safe Families Network)
- CDR (Child Death Review Database)

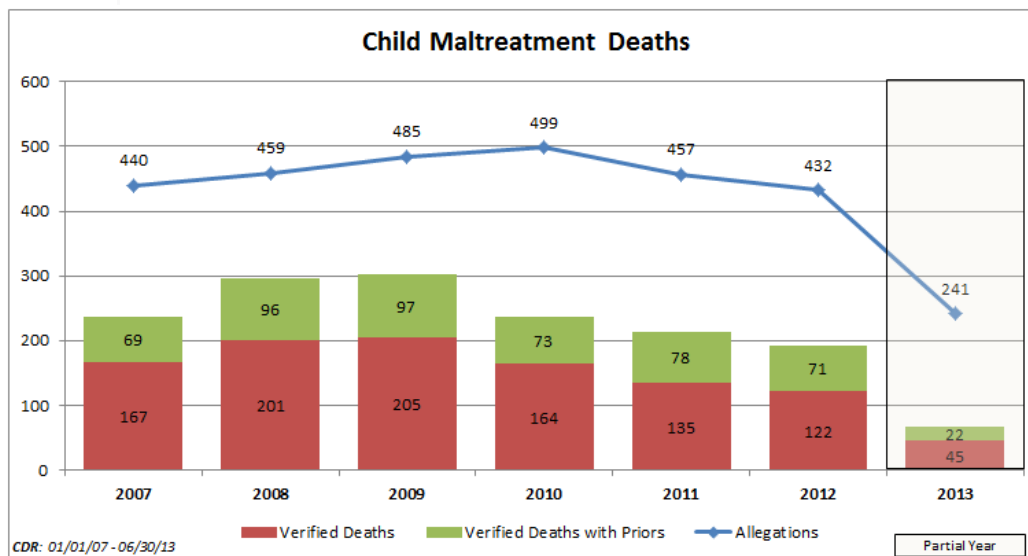
Data Population

- Child Maltreatment Deaths in Florida in general
- Child Maltreatment Deaths with prior involvement (e.g. case established, call to hotline, etc.)

Historical Analytics

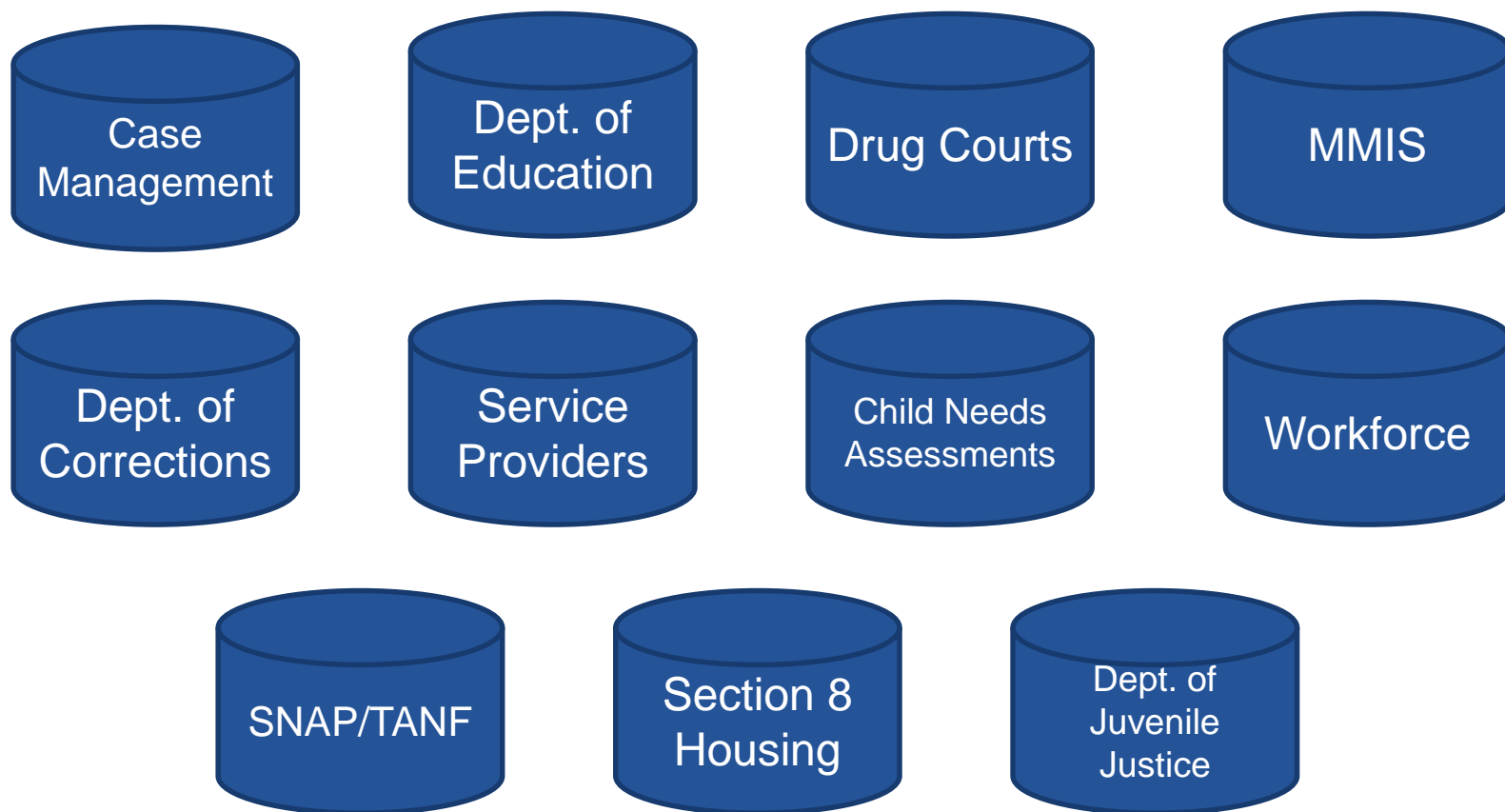
- Trend analysis (Calendar Year 2007 – June 30, 2013) and other historical analytics

SAS CASE STUDY: CHILD FATALITIES IN FLORIDA



- Analyzed at child deaths and annual trends over five year period
- Modeled risk factors that contributed to child deaths – found that prior removals due to substance abuse increased a child’s odds of dying by 14 times.
- 75% of all child deaths within the agency were from 0 to 2 years of age.

SAS SUGGESTED DATA SOURCES



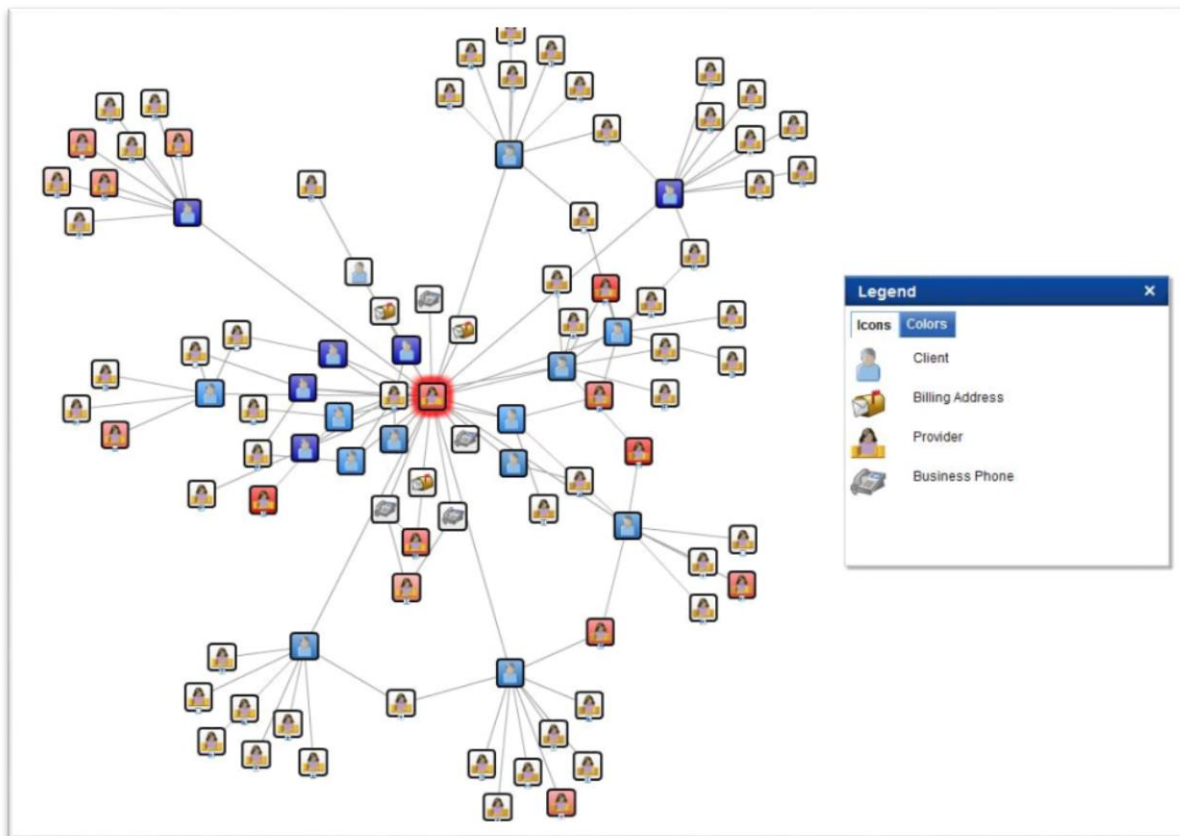
SAS CASE STUDY: LA COUNTY



- Designed and implemented data model to support analytics
- Considers outcomes and optimal programming to help children succeed
- Leverages extensive reporting and social network analysis as a part of daily operations.

SAS OPERATIONALIZING ANALYTICS

- Creating a daily scoring system to allocate resources efficiently
- Establish screening to ensure that children are not put in harm's way
- Helping to coordinate services and optimize outcomes.



DEMONSTRATION



THANK YOU



**THE
POWER
TO KNOW®**