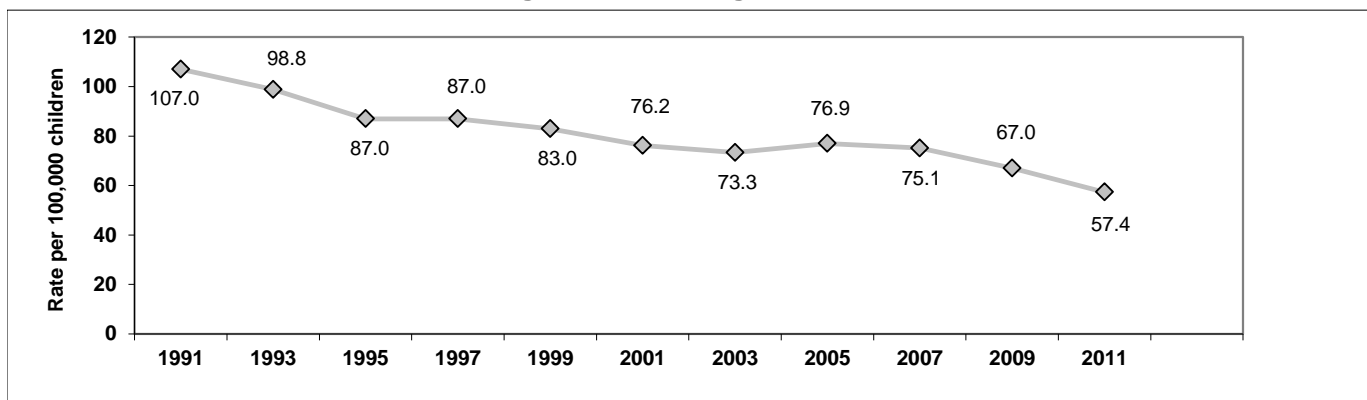


2011 CHILD DEATHS IN NORTH CAROLINA
Trend in Rate of Child Deaths 1991-2011*
Ages Birth through 17 Years



Child Deaths by Cause in North Carolina
Ages Birth through 17 Years

Cause of Death	Average Annual Number 2007-2011	Number in 2010	Number in 2011	Percent Change 2010-2011
Birth defects	216	198	197	-0.5%
Other birth-related conditions	505	430	458	6.5%
Sudden infant death syndrome	87	53	50	-5.7%
Illnesses	290	297	248	-16.5%
Unintentional injuries	222	191	202	5.8%
<i>Motor vehicle injuries</i>	115	100	98	-2.0%
<i>Bicycle injuries</i>	2	2	2	**
<i>Injuries caused by fire</i>	12	6	7	**
<i>Drowning</i>	28	37	20	-45.9%
<i>Falls</i>	2	2	1	**
<i>Poisoning</i>	15	9	16	77.8%
<i>Other unintentional injuries</i>	48	35	58	65.7%
Homicide	48	42	43	2.4%
Suicide	26	23	23	0.0%
All other	70	77	91	18.2%
TOTAL	1,464	1,311	1,312	0.1%

Child Deaths by Age				
Age Group	Average 2007-2011	Number in 2010	Number in 2011	Percent Change 2010-2011
Infant	980	854	866	1.4%
1-4	143	153	122	-20.3%
5-9	86	65	84	29.2%
10-14	94	88	95	8.0%
15-17	164	151	145	-4.0%

NC POPULATION***		
Year	Total	Under 18
2010	9,535,483	2,281,635
2011	9,656,401	2,287,593
Percent Change	1.3%	0.3%

Data reflect state residents.

Please see Technical Notes at <http://www.schs.state.nc.us/SCHS/deaths/child/cftechnote2011.pdf>

* Child death rates for 1990-1999 are not the same as published in some previous reports due to revised population estimates.

** Percent change is not calculated because the numbers are too small, and are subject to random variation over time.

***Population estimates are derived from the Vintage 2011 bridged-race postcensal population estimates files.

This file contains estimates of the resident population of the United States as of July 1, 2011 (based on the 2010 census).