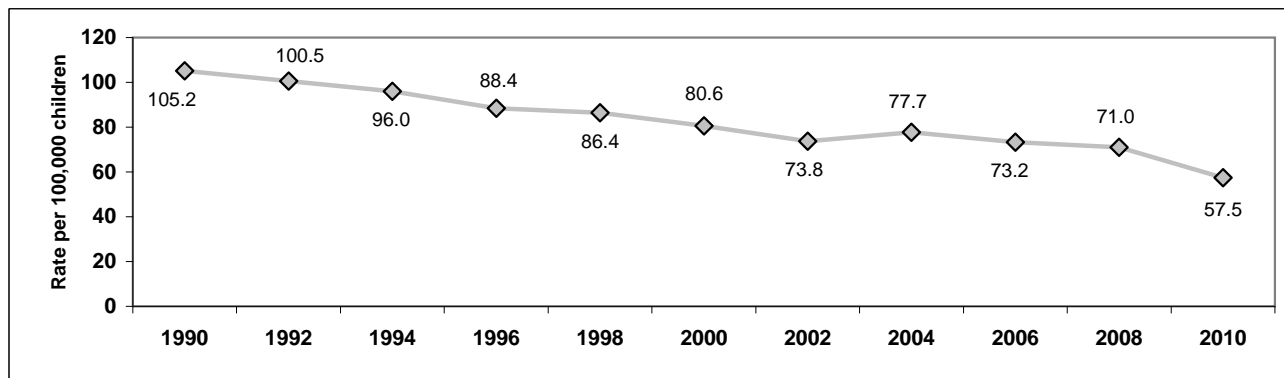


2010 CHILD DEATHS IN NORTH CAROLINA
Trend in Rate of Child Deaths 1991-2010*
Ages Birth through 17 Years



Child Deaths by Cause in North Carolina
Ages Birth through 17 Years

Cause of Death	Average Annual Number 2006-2010	Number in 2009	Number in 2010	Percent Change 2009-2010
Birth defects	217	224	198	-11.6%
Other birth-related conditions	525	531	430	-19.0%
Sudden infant death syndrome	96	98	53	-45.9%
Illnesses	301	278	297	6.8%
Unintentional injuries	238	206	191	-7.3%
<i>Motor vehicle injuries</i>	128	114	100	-12.3%
<i>Bicycle injuries</i>	3	1	2	**
<i>Injuries caused by fire</i>	14	8	6	**
<i>Drowning</i>	29	28	37	32.1%
<i>Falls</i>	3	5	2	**
<i>Poisoning</i>	15	15	9	**
<i>Other unintentional injuries</i>	46	35	35	0.0%
Homicide	52	36	42	16.7%
Suicide	26	35	23	-34.3%
All other	64	78	77	-1.3%
TOTAL	1,518	1,486	1,311	-11.8%

Child Deaths by Age

Age Group	Average 2006-2010	Number in 2009	Number in 2010	Percent Change 2009-2010
Infant	1,013	1,006	854	-15.1%
1-4	146	148	153	3.4%
5-9	89	84	65	-22.6%
10-14	97	84	88	4.8%
15-17	174	164	151	-7.9%

NC POPULATION***

Year	Total	Under 18
2009	9,382,609	2,216,736
2010	9,535,483	2,281,635
Percent Change	1.6%	2.9%

Data reflect state residents.

Please see Technical Notes at <http://www.schs.state.nc.us/SCHS/deaths/child/cftechnote2010.pdf>

* Child death rates for 1990-1999 are not the same as published in some previous reports due to revised population estimates.

** Percent change is not calculated because the numbers are too small, and are subject to random variation over time.

*** 2009 Population estimates are derived from July 1st Population Estimates of the State Demographer's Office. 2010 estimates represent April 1, 2010 resident population of North Carolina based on National Center for Health Statistics Bridged Population Estimates.

Produced by the N.C. Division of Public Health - Women's and Children's Health Section in conjunction with the State Center for Health Statistics.